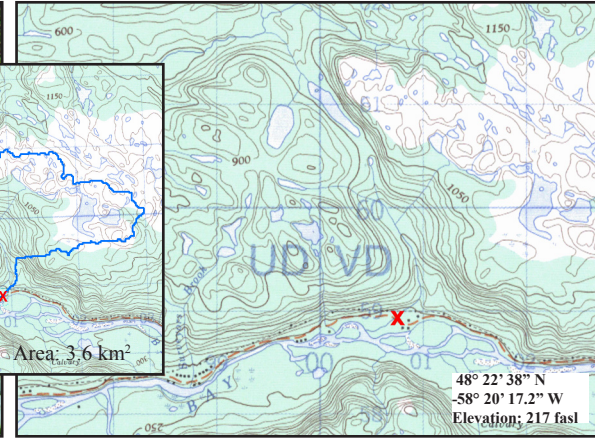


Hell's Gulch on Steel Mountain Road

NF02ZA0026

WESTERN



Site Description

Site Code	NF02ZA0026
Name	Hell's Gulch
Date Sampled	Sept. 21, 2010
Ecoregion(s)	Southwestern Nfld/Long Range Mountains
Stream Order	3
Basin	Flat Bay Brook
Sampled By	NL/EC
Accessibility	Sampled upstream of bridge, 9.4km from TCH on Steel Mountain Road.

Reach Data

Reach Characteristics			
Riffle	Rapid	Straight Run	Pool
X			
Surrounding Vegetation (D=dominant)			
Ferns/Grasses	Shrubs	Deciduous Trees	Coniferous Trees
X		X (D)	X
Canopy Coverage		76-100 %	
Macrophyte Coverage		0 %	
Periphyton Coverage		0.5-1 mm thick	


Channel Data

Bankful Width	7.2 m
Wetted Width	6.0 m
Avg. Velocity	0.36 m/s
Max. Velocity	0.57 m/s
Avg. Channel Depth	10 cm
Max. Channel Depth	14 cm
Bankfull-Wetted Depth	40 cm
Slope	0.13 m/m

Water Chemistry

Parameter	Value	Units
pH	7.3	pH units
Conductivity	50.5	uS/cm
Dissolved Oxygen	9.92	mg/L
Temperature	11.42	°C
Turbidity	0.3	NTU
Copper	0.27	ug/L
Iron	0.12	mg/L
Lead	0.11	ug/L
Zinc	0.5	ug/L
Chloride	4.96	mg/L
Phosphorous (Total)	0.003	mg/L
Nitrate	<0.02	mg/L
Nickel	0.72	ug/L

Substrate

Dominant Substrate	small pebble
2nd Dominant Substrate	large pebble
Surrounding Material	gravel
Embeddedness	unembedded
Median Particle Size	5.0 cm
Geometric Mean Particle Size	5.1 cm
Photo of Substrate	
<small>Substrate Size Class Categories: Organic cover; Sand/silt/clay (< 0.1 cm); Coarse sand (0.1 - 0.2 cm); Gravel (0.2 - 1.6 cm); Small pebble (1.6 - 3.2 cm); Large pebble (3.2 - 6.4 cm); Small cobble (6.4 - 12.8 cm); Large cobble (12.8 - 25.6 cm); Boulder (> 25.6 cm); Bedrock.</small>	