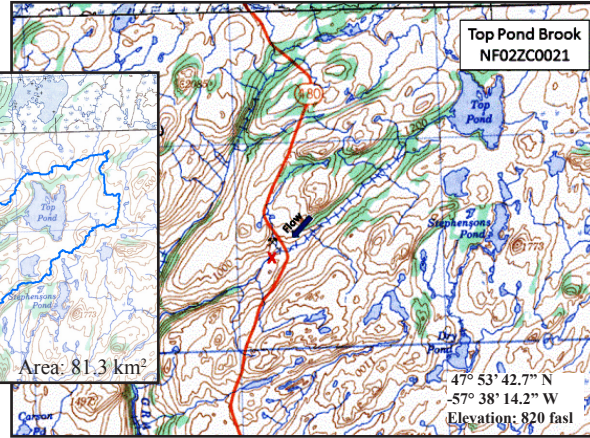


# Top Pond Brook at Route 480

NF02ZC0021

WESTERN



## Site Description

<b>Site Code</b>	NF02ZC0021
<b>Name</b>	Top Pond Brook
<b>Date Sampled</b>	Sept. 5, 2012
<b>Ecoregion(s)</b>	Long Range Mountainss
<b>Stream Order</b>	4
<b>Basin</b>	Grandy's Brook
<b>Sampled By</b>	NL
<b>Accessibility</b>	Sampled 30m d/s of bridge crossing Burgeo highway (Rt. 480)

## Reach Data

Reach Characteristics			
Riffle	Rapid	Straight Run	Pool
X		X	X
Surrounding Vegetation (D=dominant)			
Ferns/ Grasses	Shrubs	Deciduous Trees	Coniferous Trees
X (D)	X	X	X
<b>Canopy Coverage</b>		0 %	
<b>Macrophyte Coverage</b>		1-25 %	
<b>Periphyton Coverage</b>		1-5 mm thick	


## Channel Data

<b>Bankful Width</b>	42.5 m
<b>Wetted Width</b>	28.5 m
<b>Avg. Velocity</b>	0.22 m/s
<b>Max. Velocity</b>	0.42 m/s
<b>Avg. Channel Depth</b>	17.33 cm
<b>Max. Channel Depth</b>	27.00 cm
<b>Bankfull-Wetted Depth</b>	40 cm
<b>Slope</b>	0.002 m/m

## Water Chemistry

Parameter	Value	Units
pH	6.57	pH units
Conductivity	16.7	uS/cm
Dissolved Oxygen	9.89	mg/L
Temperature	15.96	°C
Turbidity	0.8	NTU
Copper	0.1	ug/L
Iron	0.1	mg/L
Lead	0.05	ug/L
Zinc	0.29	ug/L
Chloride	2.41	mg/L
Phosphorous (Total)	0.003	mg/L
Nitrate	0.02	mg/L
Nickel	0.37	ug/L

## Substrate

<b>Dominant Substrate</b>	small cobble
<b>2nd Dominant Substrate</b>	large pebble
<b>Surrounding Material</b>	coarse sand
<b>Embeddedness</b>	unembedded
<b>Median Particle Size</b>	8.1 cm
<b>Geometric Mean Particle Size</b>	8.0 cm
<b>Photo of Substrate</b>	
<small>Substrate Size Class Categories: Organic cover; Sand/silt/clay (&lt; 0.1 cm); Coarse sand (0.1 - 0.2 cm); Gravel (0.2 - 1.6 cm); Small pebble (1.6 - 3.2 cm); Large pebble (3.2 - 6.4 cm); Small cobble (6.4 - 12.8 cm); Large cobble (12.8 - 25.6 cm); Boulder (&gt; 25.6 cm); Bedrock.</small>	