

Shoal Cove Brook below Shoal Cove Pond

NF02ZG0027

EASTERN



Site Description

Site Code	NF02ZG0027
Name	Shoal Cove Brook
Date Sampled	Oct. 9, 2012
Ecoregion(s)	South Avalon-Burin Oceanic Barrens
Stream Order	2
Basin	Shoal Cove Brook
Sampled By	NL
Accessibility	Sampled u/s of outlet into ocean at Shoal Cove near St. Lawrence

Reach Data

Reach Characteristics			
Riffle	Rapid	Straight Run	Pool
X		X	X
Surrounding Vegetation (D=dominant)			
Ferns/Grasses	Shrubs	Deciduous Trees	Coniferous Trees
X	X(D)		X
Canopy Coverage		0 %	
Macrophyte Coverage		0 %	
Periphyton Coverage		1-5 mm thick	

Channel Data

Bankful Width	8.7 m
Wetted Width	4.85 m
Avg. Velocity	0.30 m/s
Max. Velocity	0.41 m/s
Avg. Channel Depth	16.33 cm
Max. Channel Depth	23.00 cm
Bankfull-Wetted Depth	85 cm
Slope	0.025 m/m

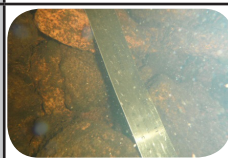
Water Chemistry

Parameter	Value	Units
pH	8.5	pH units
Conductivity	125	uS/cm
Dissolved Oxygen	10.82	mg/L
Temperature	13.11	°C
Turbidity	1.4	NTU
Copper	2.1	ug/L
Iron	0.35	mg/L
Lead	3.57	ug/L
Zinc	4.36	ug/L
Chloride	18.39	mg/L
Phosphorous (Total)	0.006	mg/L
Nitrate	0.06	mg/L
Nickel	1.21	ug/L

Substrate

Dominant Substrate	large cobble
2nd Dominant Substrate	boulder
Surrounding Material	large pebble
Embeddedness	1/4 embedded
Median Particle Size	17.0 cm
Geometric Mean Particle Size	15.0 cm

Photo of Substrate



Substrate Size Class Categories: Organic cover; Sand/silt/clay (< 0.1 cm); Coarse sand (0.1 - 0.2 cm); Gravel (0.2 - 1.6 cm); Small pebble (1.6 - 3.2 cm); Large pebble (3.2 - 6.4 cm); Small cobble (6.4 - 12.8 cm); Large cobble (12.8 - 25.6 cm); Boulder (> 25.6 cm); Bedrock.