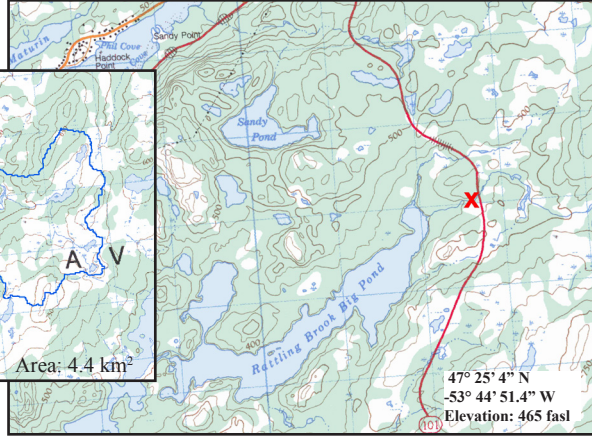
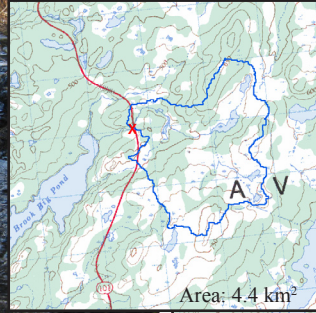


Tributary to Rattling Brook Big Pond

NF02ZK0026

EASTERN



Site Description

Site Code	NF02ZK0026
Name	Tributary to Rattling Brook Big Pond
Date Sampled	Aug. 30, 2010
Ecoregion(s)	Maritime Barrens
Stream Order	2
Basin	Rattling Brook
Sampled By	NL/EC
Accessibility	Sampled 30m downstream of culvert at Route 101.

Reach Data

Reach Characteristics			
Riffle	Rapid	Straight Run	Pool
X			X
Surrounding Vegetation (D=dominant)			
Ferns/Grasses	Shrubs	Deciduous Trees	Coniferous Trees
	X		X (D)
Canopy Coverage		26-50 %	
Macrophyte Coverage		0 %	
Periphyton Coverage		5-20 mm thick	


Channel Data

Bankful Width	4.45 m
Wetted Width	2.35 m
Avg. Velocity	0.08 m/s
Max. Velocity	0.11 m/s
Avg. Channel Depth	15.5 cm
Max. Channel Depth	20.0 cm
Bankfull-Wetted Depth	22 cm
Slope	0.06 m/m

Water Chemistry

Parameter	Value	Units
pH	7.09	pH units
Conductivity	48.7	uS/cm
Dissolved Oxygen	7.9	mg/L
Temperature	19.19	°C
Turbidity	0.6	NTU
Copper	0.3	ug/L
Iron	0.43	mg/L
Lead	<0.1	ug/L
Zinc	0.7	ug/L
Chloride	5.58	mg/L
Phosphorous (Total)	0.008	mg/L
Nitrate	<0.02	mg/L
Nickel	0.3	ug/L

Substrate

Dominant Substrate	small cobble
2nd Dominant Substrate	large cobble
Surrounding Material	gravel
Embeddedness	1/4 embedded
Median Particle Size	8.95 cm
Geometric Mean Particle Size	8.80 cm
Photo of Substrate	
<small>Substrate Size Class Categories: Organic cover; Sand/silt/clay (< 0.1 cm); Coarse sand (0.1 - 0.2 cm); Gravel (0.2 - 1.6 cm); Small pebble (1.6 - 3.2 cm); Large pebble (3.2 - 6.4 cm); Small cobble (6.4 - 12.8 cm); Large cobble (12.8 - 25.6 cm); Boulder (> 25.6 cm); Bedrock.</small>	