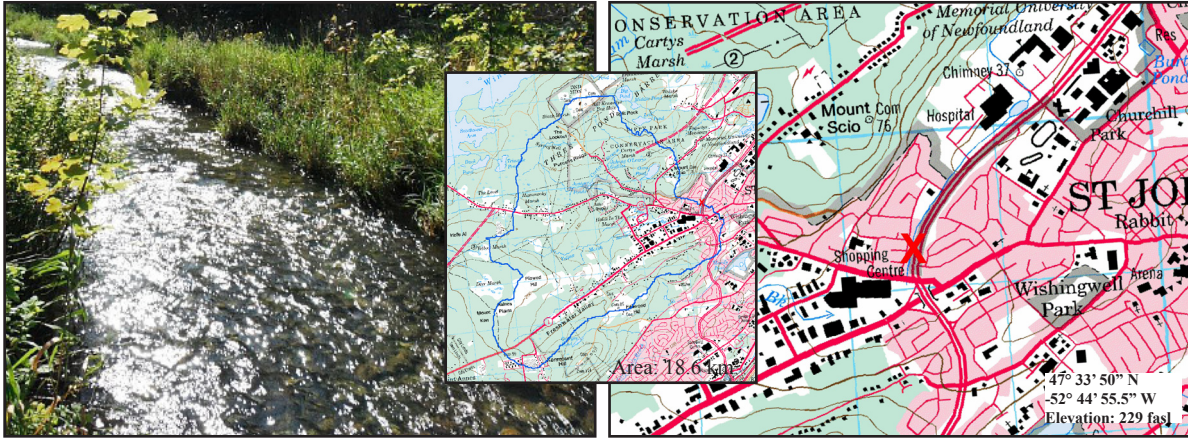


Leary's Brook at Prince Philip Drive

NF02ZM0178

EASTERN



Site Description

Site Code	NF02ZM0178
Name	Leary's Brook
Date Sampled	Sept 21, 2011
Ecoregion(s)	Maritime Barrens
Stream Order	3
Basin	Rennie's River
Sampled By	NL
Accessibility	Sampled at real-time station parallel to Prince Philip Dr, St. John's. Kicked upstream of probe.

Reach Data

Reach Characteristics			
Riffle	Rapid	Straight Run	Pool
X		X	
Surrounding Vegetation (D=dominant)			
Ferns/Grasses	Shrubs	Deciduous Trees	Coniferous Trees
X (D)	X	X	X
Canopy Coverage		1-25 %	
Macrophyte Coverage		1-25 %	
Periphyton Coverage		<0.5 mm thick	


Channel Data

Bankful Width	15 m
Wetted Width	4.1 m
Avg. Velocity	0.41 m/s
Max. Velocity	0.50 m/s
Avg. Channel Depth	25.33 cm
Max. Channel Depth	36.00 cm
Bankfull-Wetted Depth	150 cm
Slope	0.01 m/m

Water Chemistry

Parameter	Value	Units
pH	5.74	pH units
Conductivity	387	uS/cm
Dissolved Oxygen	9.71	mg/L
Temperature	14.8	°C
Turbidity	1.3	NTU
Copper	1.5	ug/L
Iron	0.65	mg/L
Lead	0.24	ug/L
Zinc	9.46	ug/L
Chloride	103.3	mg/L
Phosphorous (Total)	0.01	mg/L
Nitrate	0.27	mg/L
Nickel	2.65	ug/L

Substrate

Dominant Substrate	large pebble
2nd Dominant Substrate	small cobble
Surrounding Material	gravel
Embeddedness	1/4 embedded
Median Particle Size	5.0 cm
Geometric Mean Particle Size	4.1 cm
Photo of Substrate	
<small>Substrate Size Class Categories: Organic cover; Sand/silt/clay (< 0.1 cm); Coarse sand (0.1 - 0.2 cm); Gravel (0.2 - 1.6 cm); Small pebble (1.6 - 3.2 cm); Large pebble (3.2 - 6.4 cm); Small cobble (6.4 - 12.8 cm); Large cobble (12.8 - 25.6 cm); Boulder (> 25.6 cm); Bedrock.</small>	