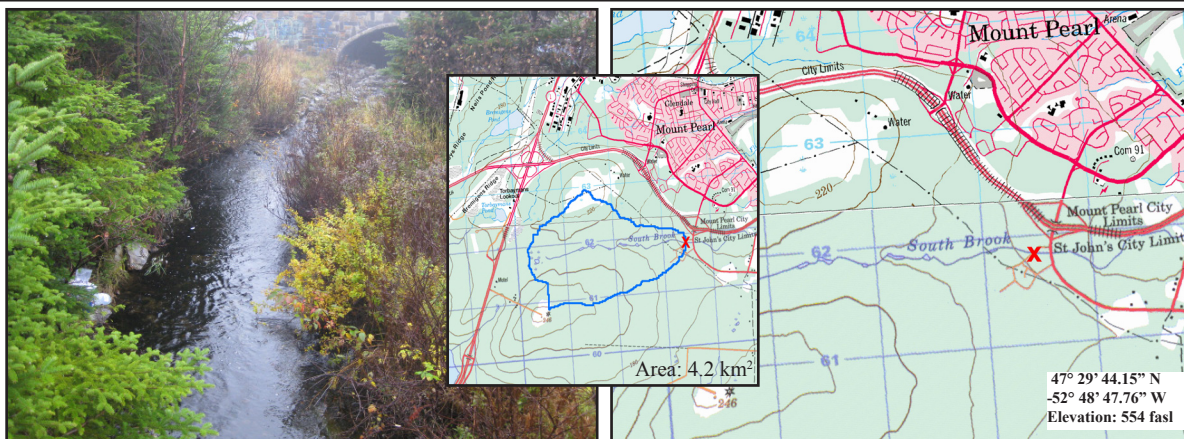


South Brook at Headwaters

NF02ZM0185

EASTERN



Site Description

Site Code	NF02ZM0185
Name	South Brook
Date Sampled	Oct. 28, 2008
Ecoregion(s)	Maritime Barrens
Stream Order	1
Basin	Waterford River
Sampled By	NL/NAACAP
Accessibility	Sampled 15 m downstream of culvert, 5 m upstream of pedestrian bridge.

Reach Data

Reach Characteristics			
Riffle	Rapid	Straight Run	Pool
X		X	X
Surrounding Vegetation (D=dominant)			
Ferns/Grasses	Shrubs	Deciduous Trees	Coniferous Trees
X	X (D)	X	X
Canopy Coverage		1-25 %	
Macrophyte Coverage		1-25 %	
Periphyton Coverage		0.5-1 mm thick	

Channel Data

Bankful Width	3.7 m
Wetted Width	3.2 m
Avg. Velocity	0.17 m/s
Max. Velocity	0.25 m/s
Avg. Channel Depth	22.33 cm
Max. Channel Depth	27.00 cm
Bankfull-Wetted Depth	24 cm
Slope	n/a

Water Chemistry

Parameter	Value	Units
pH	5.64	pH units
Conductivity	41.6	uS/cm
Dissolved Oxygen	10.51	mg/L
Temperature	9.02	°C
Turbidity	0.6	NTU
Copper	0.3	ug/L
Iron	0.52	mg/L
Lead	0.2	ug/L
Zinc	1.1	ug/L
Chloride	7.94	mg/L
Phosphorous (Total)	0.008	mg/L
Nitrate	<0.02	mg/L
Nickel	0.3	ug/L

Substrate

Dominant Substrate	small cobble
2nd Dominant Substrate	large pebble
Surrounding Material	large pebble
Embeddedness	n/a
Median Particle Size	4.45 cm
Geometric Mean Particle Size	6.70 cm

Photo of Substrate



Substrate Size Class Categories: Organic cover; Sand/silt/clay (< 0.1 cm); Coarse sand (0.1 - 0.2 cm); Gravel (0.2 - 1.6 cm); Small pebble (1.6 - 3.2 cm); Large pebble (3.2 - 6.4 cm); Small cobble (6.4 - 12.8 cm); Large cobble (12.8 - 25.6 cm); Boulder (> 25.6 cm); Bedrock.