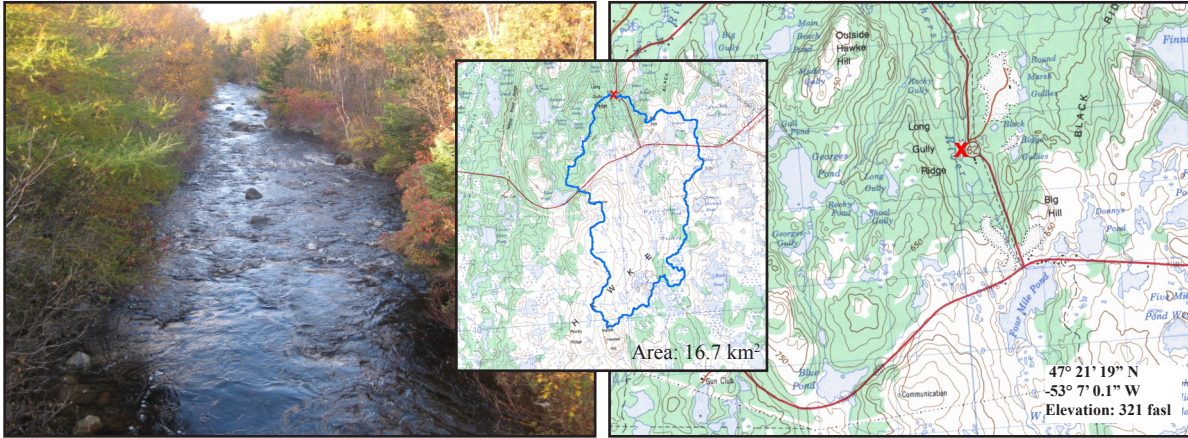


# South River near Holyrood

NF02ZM0360

EASTERN



## Site Description

<b>Site Code</b>	NF02ZM0360
<b>Name</b>	South River
<b>Date Sampled</b>	Sept. 1, 2010
<b>Ecoregion(s)</b>	Maritime Barrens
<b>Stream Order</b>	3
<b>Basin</b>	South Brook
<b>Sampled By</b>	NL
<b>Accessibility</b>	Sampled upstream of bridge on road to quarry off Route 62.

## Reach Data

Reach Characteristics			
Riffle	Rapid	Straight Run	Pool
X		X	X
Surrounding Vegetation (D=dominant)			
Ferns/Grasses	Shrubs	Deciduous Trees	Coniferous Trees
X	X (D)	X	X
<b>Canopy Coverage</b>		1-25 %	
<b>Macrophyte Coverage</b>		0 %	
<b>Periphyton Coverage</b>		0.5-1 mm thick	


## Channel Data

<b>Bankful Width</b>	7.1 m
<b>Wetted Width</b>	5.15 m
<b>Avg. Velocity</b>	0.29 m/s
<b>Max. Velocity</b>	0.40 m/s
<b>Avg. Channel Depth</b>	9.5 cm
<b>Max. Channel Depth</b>	11.0 cm
<b>Bankfull-Wetted Depth</b>	30 cm
<b>Slope</b>	0.04 m/m

## Water Chemistry

Parameter	Value	Units
pH	6.78	pH units
Conductivity	104.7	uS/cm
Dissolved Oxygen	9.64	mg/L
Temperature	15.22	°C
Turbidity	0.3	NTU
Copper	0.26	ug/L
Iron	0.15	mg/L
Lead	0.14	ug/L
Zinc	1.0	ug/L
Chloride	24.03	mg/L
Phosphorous (Total)	0.005	mg/L
Nitrate	0.03	mg/L
Nickel	0.56	ug/L

## Substrate

<b>Dominant Substrate</b>	small cobble
<b>2nd Dominant Substrate</b>	large cobble
<b>Surrounding Material</b>	large pebble
<b>Embeddedness</b>	unembedded
<b>Median Particle Size</b>	9.0 cm
<b>Geometric Mean Particle Size</b>	8.6 cm
<b>Photo of Substrate</b>	
<small>Substrate Size Class Categories: Organic cover; Sand/silt/clay (&lt; 0.1 cm); Coarse sand (0.1 - 0.2 cm); Gravel (0.2 - 1.6 cm); Small pebble (1.6 - 3.2 cm); Large pebble (3.2 - 6.4 cm); Small cobble (6.4 - 12.8 cm); Large cobble (12.8 - 25.6 cm); Boulder (&gt; 25.6 cm); Bedrock.</small>	