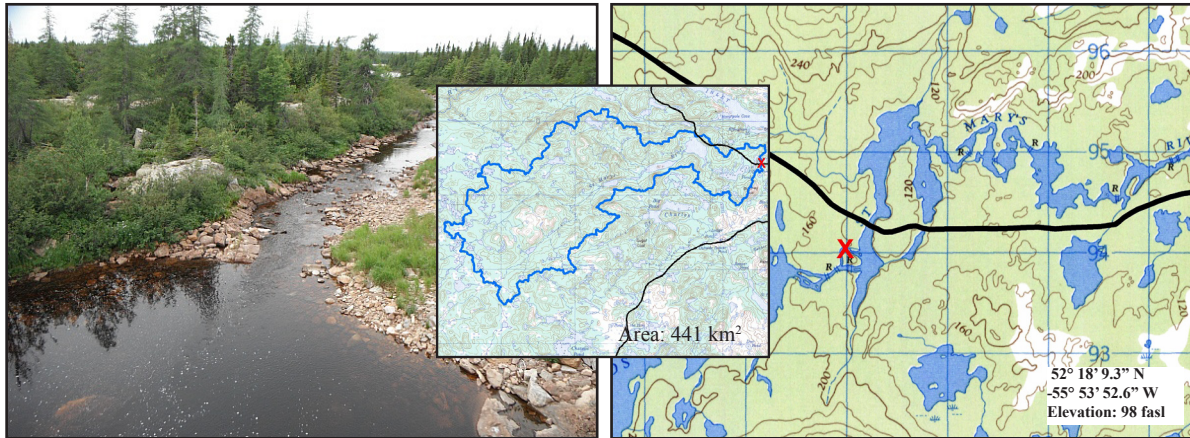


# St. Mary's River at Route 510

NF03QC0082

LABRADOR



## Site Description

<b>Site Code</b>	NF03QC0082
<b>Name</b>	St. Mary's River
<b>Date Sampled</b>	Sept. 8, 2011
<b>Ecoregion(s)</b>	Mecatina Plateau/Coastal Barrens/Paradise River
<b>Stream Order</b>	5
<b>Basin</b>	Labrador Sea - Alexis
<b>Sampled By</b>	NL
<b>Accessibility</b>	Sampled upstream of Route 510, portion of river branched from main channel

## Reach Data

Reach Characteristics			
Riffle	Rapid	Straight Run	Pool
X			X
Surrounding Vegetation (D=dominant)			
Ferns/Grasses	Shrubs	Deciduous Trees	Coniferous Trees
X (D)	X	X	X
<b>Canopy Coverage</b>		0 %	
<b>Macrophyte Coverage</b>		0 %	
<b>Periphyton Coverage</b>		<0.5 mm thick	


## Channel Data

<b>Bankful Width</b>	9.5 m
<b>Wetted Width</b>	5.4 m
<b>Avg. Velocity</b>	0.30 m/s
<b>Max. Velocity</b>	0.48 m/s
<b>Avg. Channel Depth</b>	9.75 cm
<b>Max. Channel Depth</b>	16.0 cm
<b>Bankfull-Wetted Depth</b>	100 cm
<b>Slope</b>	0.006 m/m

## Water Chemistry

Parameter	Value	Units
pH	5.6	pH units
Conductivity	11.9	uS/cm
Dissolved Oxygen	9.94	mg/L
Temperature	13.74	°C
Turbidity	0	NTU
Copper	0.16	ug/L
Iron	0.24	mg/L
Lead	<0.03	ug/L
Zinc	0.72	ug/L
Chloride	1.8	mg/L
Phosphorous (Total)	0.006	mg/L
Nitrate	<0.02	mg/L
Nickel	0.86	ug/L

## Substrate

<b>Dominant Substrate</b>	large cobble
<b>2nd Dominant Substrate</b>	small cobble
<b>Surrounding Material</b>	small pebble
<b>Embeddedness</b>	1/4 embedded
<b>Median Particle Size</b>	15.0 cm
<b>Geometric Mean Particle Size</b>	14.4 cm
<b>Photo of Substrate</b>	
<small>Substrate Size Class Categories: Organic cover; Sand/silt/clay (&lt; 0.1 cm); Coarse sand (0.1 - 0.2 cm); Gravel (0.2 - 1.6 cm); Small pebble (1.6 - 3.2 cm); Large pebble (3.2 - 6.4 cm); Small cobble (6.4 - 12.8 cm); Large cobble (12.8 - 25.6 cm); Boulder (&gt; 25.6 cm); Bedrock.</small>	