



WERAC

*Wilderness and Ecological
Reserves Advisory Council*

Building a Foundation for a Home for Nature:

Summary of the WERAC Recommendations Report on the Protected Areas Plan for the Island of Newfoundland



The Problem



Climate Change



Biodiversity loss

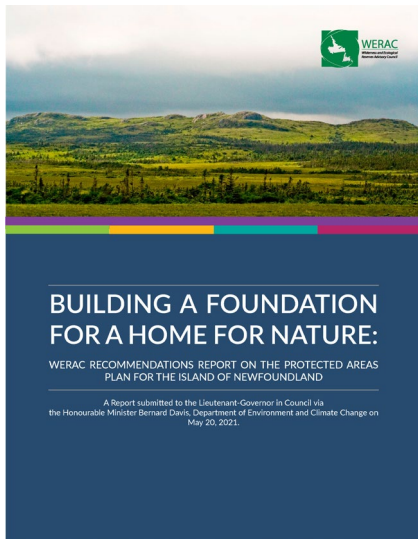


Habitat
fragmentation and
loss



Rural economic
hardship

The NL Solution for Nature... and People



Climate Change
mitigation



Rural economic
support and
diversification



Community
engagement in land
use planning



Protection of
biodiversity
and species
habitats



Protection of
culture and
traditional
livelihoods



Long-term
community health

Key Recommendation

Implement a comprehensive and connected system of protected areas for Newfoundland and Labrador.

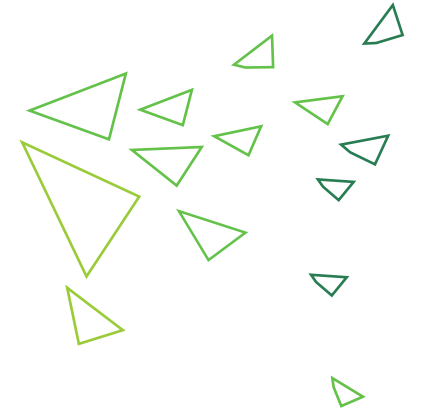
Implement the Protected Areas Plan for the Island of Newfoundland	Improve engagement processes and communications	Expand on the Plan to build a more comprehensive system of protected areas for the province	Manage reserves to benefit nature and support people, and update the WER Act to reflect this
<p>1: Develop an Implementation Plan.</p> <p>2: Ensure that proposed reserves are protected during the implementation process.</p> <p>3: Move forward with comprehensive public consultations.</p> <p>4: Work together to find solutions to protected areas planning conflicts.</p> <p>5: Support the creation of transitional reserves as described in the Plan.</p>	<p>6: Engage Indigenous groups in a meaningful protected areas planning process.</p> <p>7: Improve transparency, communications, and education.</p> <p>8: Endorse protected areas as part of the climate change solution.</p>	<p>9: Expand on planning efforts to reach current conservation targets and broaden the Plan to include additional areas and protect other values.</p> <p>10: Improve protected area and landscape connectivity.</p> <p>11: Consider other protective mechanisms.</p> <p>12: Develop a collaborative conservation planning process for Labrador.</p>	<p>13: Invest in rural communities, sustainable rural economic development, and reserve management.</p> <p>14: Support reserve management that protects nature and local traditions.</p> <p>15: Modernize the WER Act.</p>



Implement the Protected Areas Plan for the Island of Newfoundland

Supporting Recommendations

1. Develop an Implementation Plan.
2. Ensure that proposed reserves are protected during the implementation process.
3. Move forward with comprehensive public consultations.
4. Work together to find solutions to protected areas planning conflicts.
5. Support the creation of transitional reserves as described in the Plan.

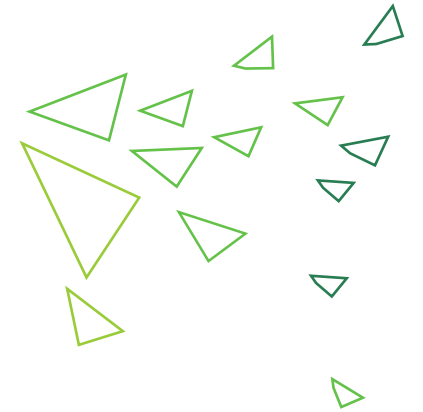




Improve engagement processes and communications

Supporting Recommendations

- 6. Engage Indigenous groups in a meaningful protected areas planning process.
- 7. Improve transparency, communications and education.
- 8. Endorse protected areas as part of the climate change solution.

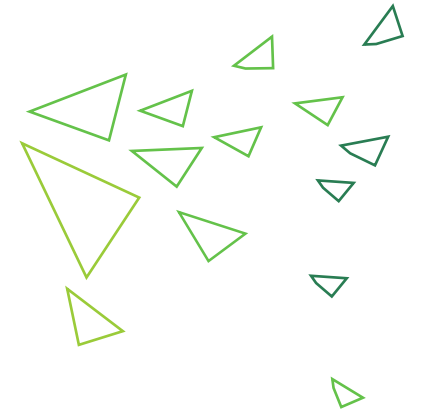


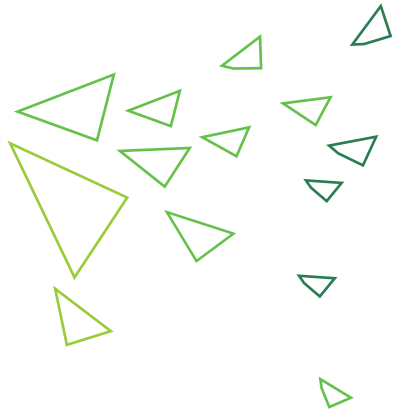


Expand on the Plan to
build a more
comprehensive system of
protected areas for the
province

Supporting Recommendations

9. Expand on planning efforts to reach current conservation targets and broaden the Plan to include additional areas and protect other values.
10. Improve protected area and landscape connectivity.
11. Consider other protective mechanisms.
12. Develop a collaborative conservation planning process for Labrador.





Supporting Recommendations

- 13. Invest in rural communities, sustainable rural economic development, and reserve management.

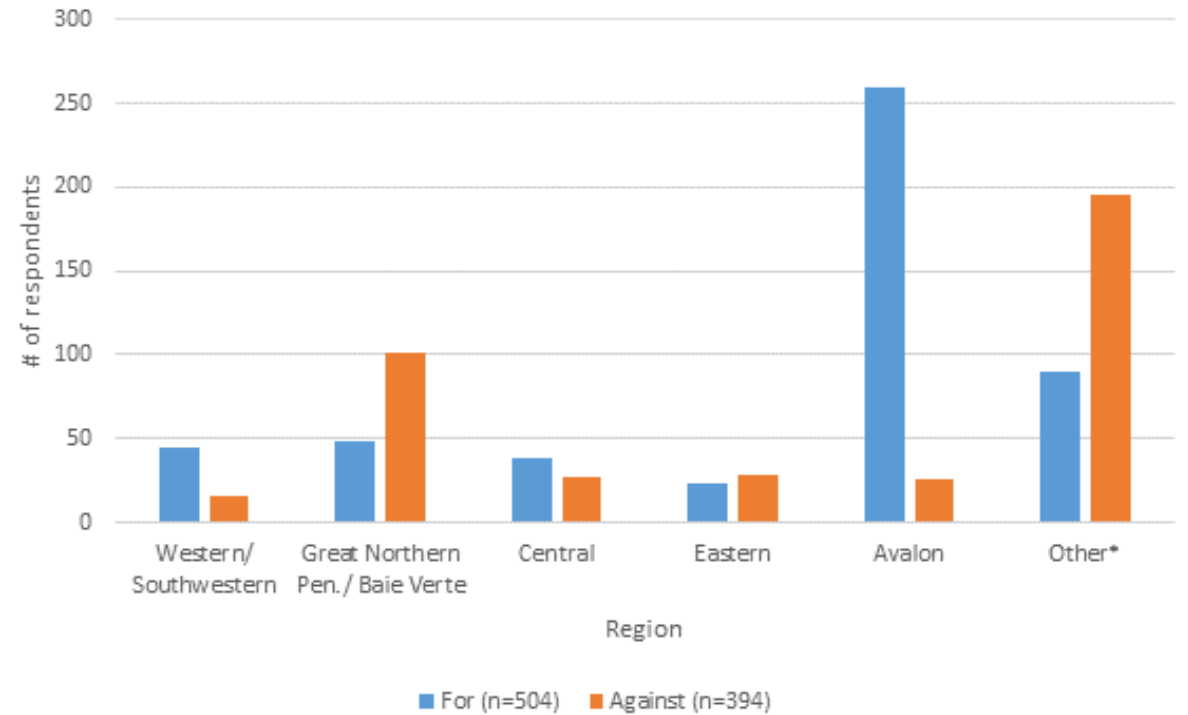
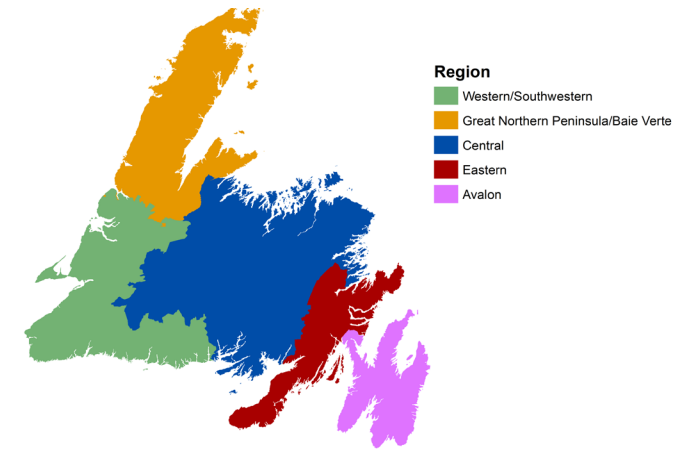
- 14. Support reserve management that protects nature and local traditions.

- 15. Modernize the WER Act.

Manage reserves to benefit nature and support people, and update the WER Act to reflect this

What WERAC Heard

- There is support for establishing a network of protected areas on the Island of Newfoundland. Support varies by region, as do concerns.
- People want to continue traditional activities, see financial and community benefit from proposed reserves, and be able to continue to access these areas.
- People want to move forward with local consultations (Phase 2) and for WERAC and government to provide more engagement, education, and improved communications.
- Reserve-specific concerns can be collaboratively addressed during Phase 2 local public consultations.



Protected Areas Planning in NL

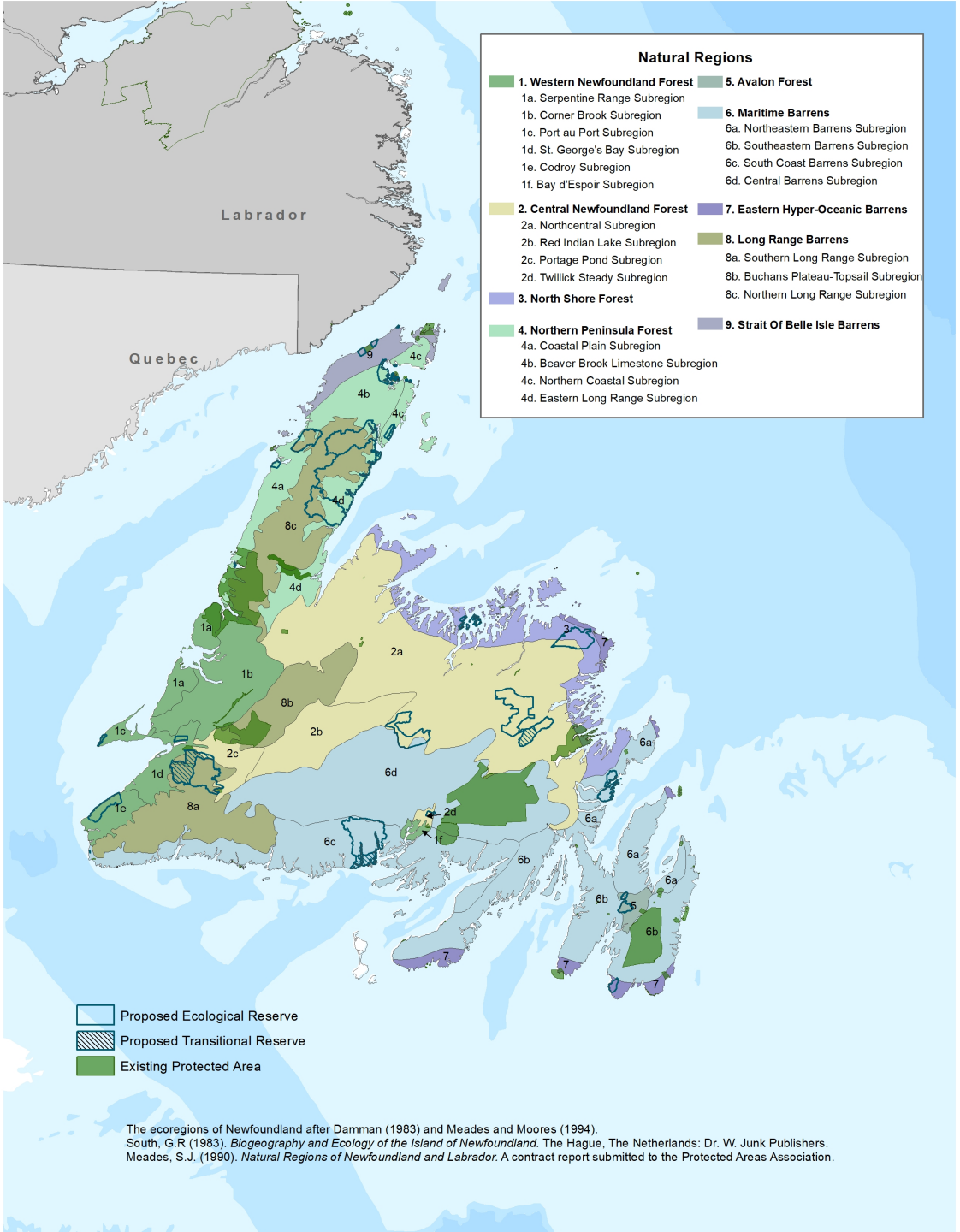
Phase 1 2020-2021

- Public consultation on the document A Home for Nature: Protected Areas Plan for the Island of Newfoundland.
- Public release of a What We Heard Document
- WERAC submission of the Recommendations Report to government.

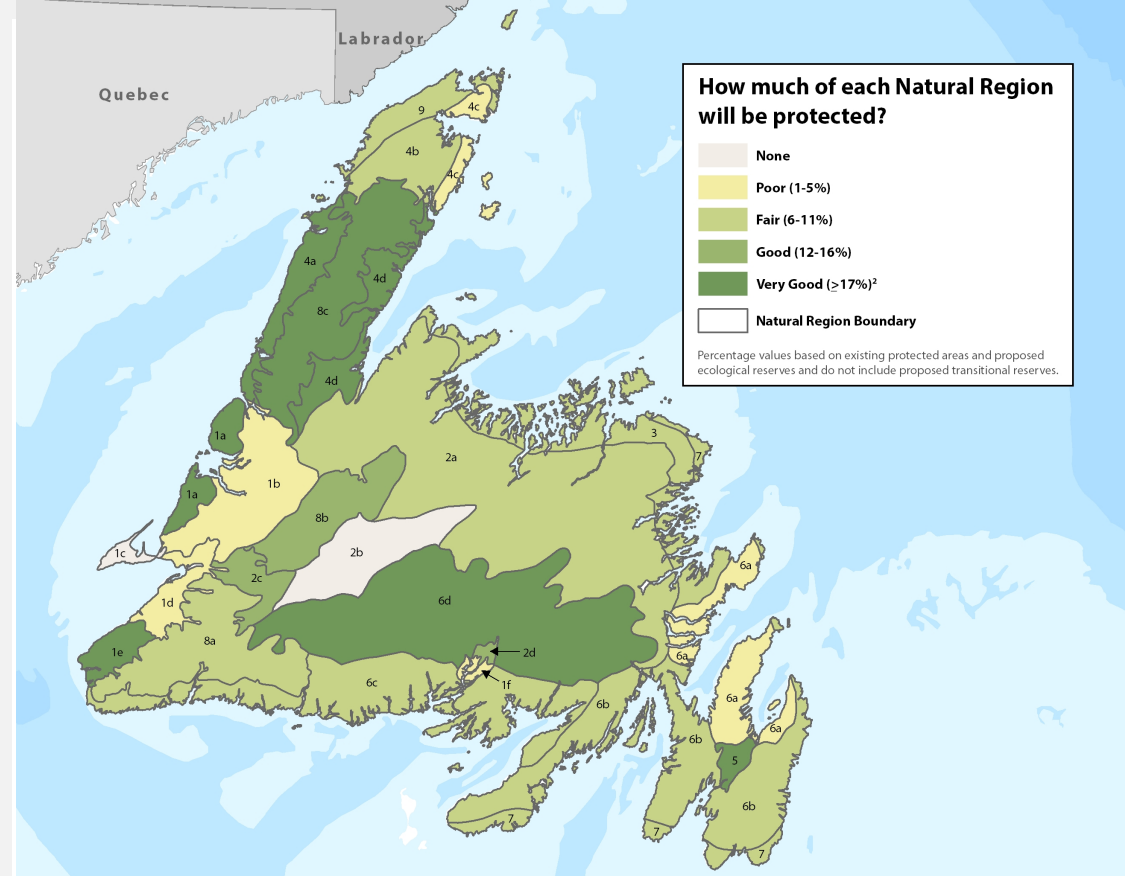
- Government decides whether and how to move forward, in response to WERAC Recommendations Report.
- If government decides to move forward, planning for Phase 2 will begin.

Phase 2

- Develop an implementation plan.
- Conduct outreach and education about protected areas.
- Public consultations on individual reserves.
- Assessment of additional areas as per recommendations 9 - 12.



Protected Areas Plan for the Island of Newfoundland, Including Natural Regions (ecoregions and subregions)



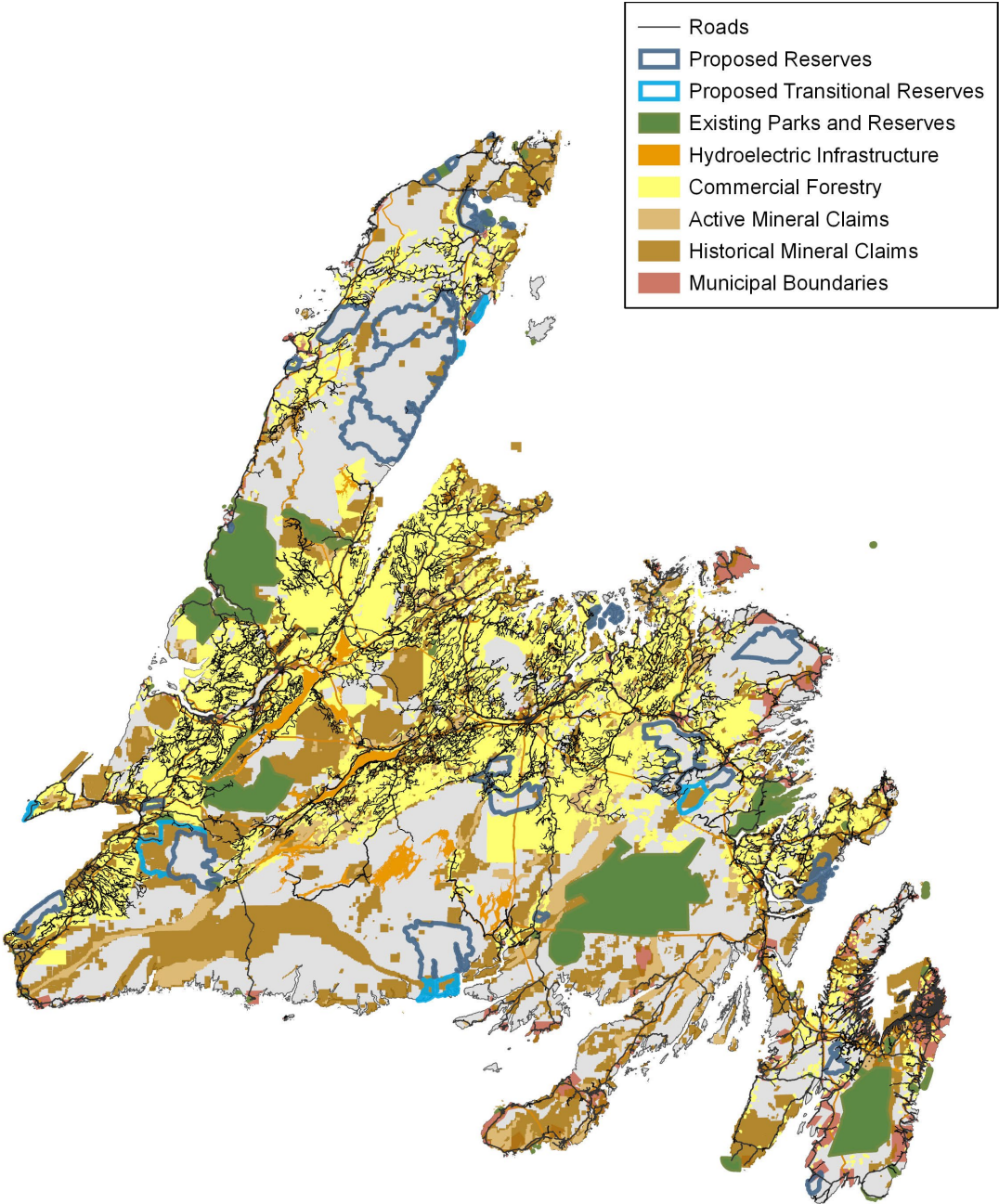
Levels of Natural Region Protection if the Plan is Implemented in its Entirety

Natural Regions of the Island of Newfoundland ¹		
<p>1. Western Newfoundland Forest</p> <p>1a. Serpentine Range Subregion 1b. Corner Brook Subregion 1c. Port au Port Subregion 1d. St. George's Bay Subregion 1e. Codroy Subregion 1f. Bay d'Espoir Subregion</p>	<p>4. Northern Peninsula Forest</p> <p>4a. Coastal Plain Subregion 4b. Beaver Brook Limestone Subregion 4c. Northern Coastal Subregion 4d. Eastern Long Range Subregion</p>	<p>7. Eastern Hyper-Oceanic Barrens</p>
<p>2. Central Newfoundland Forest</p> <p>2a. Northcentral Subregion 2b. Red Indian Lake Subregion 2c. Portage Pond Subregion 2d. Twillick Steady Subregion</p>	<p>5. Avalon Forest</p>	<p>8. Long Range Barrens</p> <p>8a. Southern Long Range Subregion 8b. Buchans Plateau-Topsail Subregion 8c. Northern Long Range Subregion</p>
<p>3. North Shore Forest</p>	<p>6. Maritime Barrens</p> <p>6a. Northeastern Barrens Subregion 6b. Southeastern Barrens Subregion 6c. South Coast Barrens Subregion 6d. Central Barrens Subregion</p>	<p>9. Strait Of Belle Isle Barrens</p>

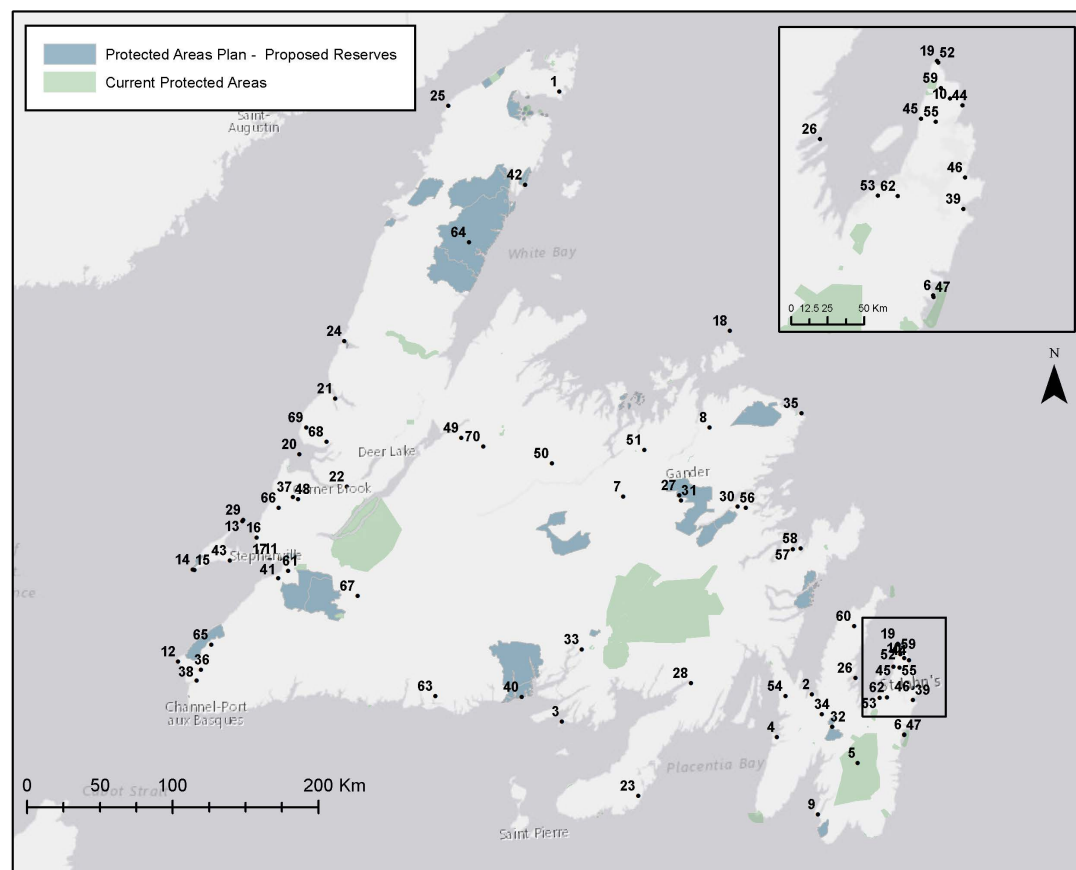
¹The ecoregions of Newfoundland after Damman (1983) and Meades and Moores (1994). South, G.R. (1983). *Biogeography and Ecology of the Island of Newfoundland*. The Hague, The Netherlands: Dr. W. Junk Publishers. Meades, S.J. (1990). *Natural Regions of Newfoundland and Labrador*. A contract report submitted to the Protected Areas Association.

²Canada is a signatory to the United Nations Convention on Biological Diversity which commits Canada to conserving at least 17% of its terrestrial areas and inland waters by 2020.

2020 Human Footprint/ Development Considerations



Additional Areas Proposed for Protection by the Public during Phase 1 Public Consultations

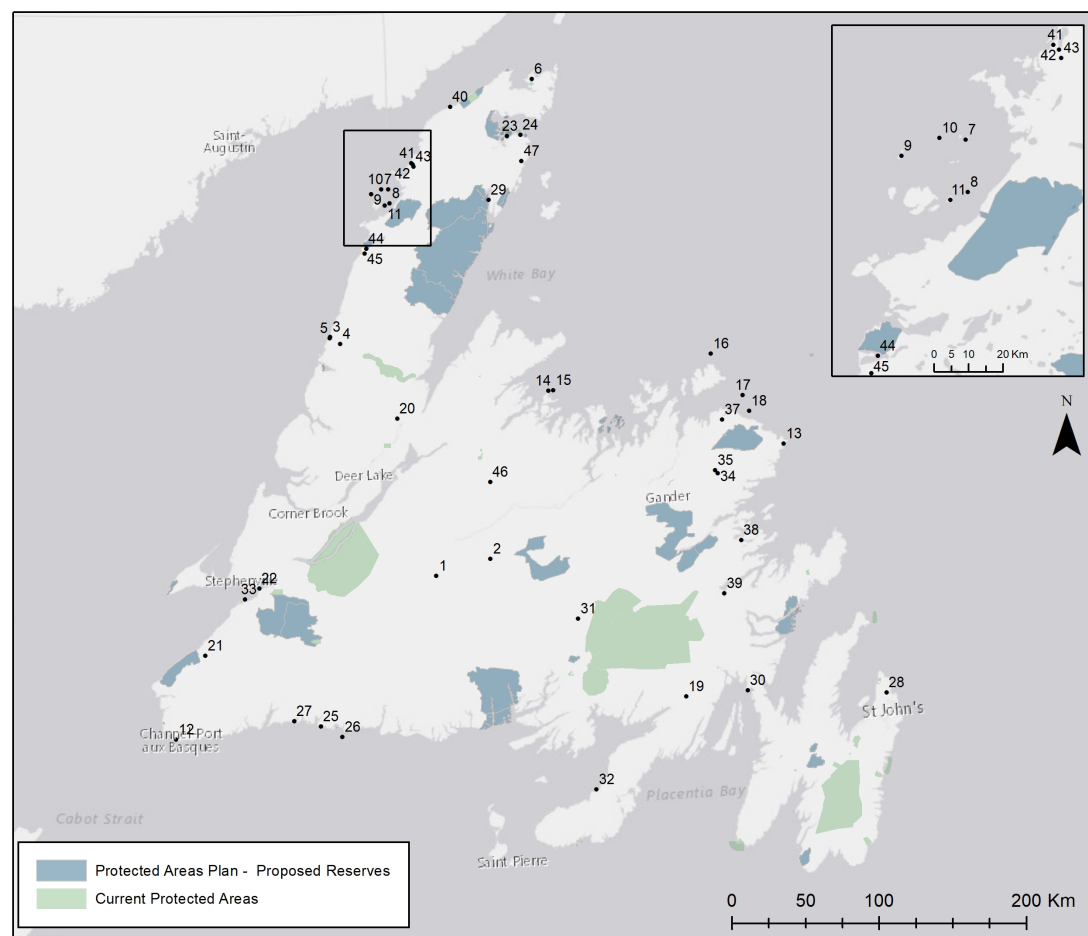


1. White Hills	20. Bay of Islands	39. East Coast Trail	Wetlands
2. Spread Eagle	21. Bonne Bay	40. Facheaux	56. Terra Nova Park
3. Connaigre Peninsula	22. Humber River	41. Barachois South	Expansion
4. Argentia Backlands	23. Burin - St. Lawrence	42. Mare Cove Coastline	57. Sweet Bay Peninsula
5. Avalon Wilderness Reserve	24. St. Paul's Saltmarsh	43. Piccadilly Estuary	58. Sweet Bay
6. Ragged Beach	25. Flower's Cove	44. The Beamer	Princeton Peninsula
7. Cooper's Brook	26. Mad Rocks	45. Brock's Head Pond	59. Northeast Avalon
8. Northwest Gander River	27. Deer Pond Area	46. Freshwater Bay	60. Heart's Content Barrens
9. St. Vincent's River	28. Terrenceville	47. Mainland Side	61. Barachois River
10. Pouch Cove Barren	29. Blue Beach	48. Serpentine Lake & River	62. Upper Manuel's
11. Stephenville Crossing	30. Grant's Pit	49. Birchy Lake Mountains	63. Grey River Watershed
12. Shoal Point	31. Rodney Pond	50. Hodges Hill	64. Soufflet's River
13. Long Point	32. Ripple Pond	51. Indian Arm Brook	65. Cape Anguille Mountains
14. Bottle Du Cap	33. Conne River North	52. Pigeon Island	66. Lewis Hills
15. Cape St. George	34. Markland	53. Conception Bay South	67. Lloyd's River
16. Point au Mal	35. Cape Freels	54. Avalon Peninsula Isthmus	68. North Arm Mountain
17. Stephenville Lagoon	36. Codroy River Valley	55. Northeast Avalon	69. Gregory Plateau
18. Little Fogo Island	37. Serpentine Marsh		70. Gaff Topsails
19. Cape St. Francis	38. Starlite Trail		

Service Layer Credits: Esri, HERE, Garmin, (c) OpenStreetMap contributors, and the GIS user community

Note: Points are an approximation of location only and do not represent area.

Additional Wetland or Waterfowl Areas Proposed for Protection by the Public during Phase 1 Public Consultations



- | | | | |
|------------------------|--------------------------------|---------------------------|-----------------------------|
| 1. Victoria Steadies | 15. Duck Island | 28. Lundrigan's Marsh | 42. Crooked Pond |
| 2. Noel Paul Steadies | 16. Little Fogo Island | 29. Cloud River Tickers | 43. Unnamed Pond |
| 3. Parson's Pond River | 17. Wadham Islands | 30. Swift Current Barrens | 44. Little Brook Pond |
| 4. Parson's Pond | 18. Penguin Islands | 31. Swift Current Barrens | 45. Small Pond |
| 5. Moulting Pond | 19. Dunn's River Watershed | 32. Frenchman's Cove | 46. Barney's Brook Steadies |
| 6. Eastern Pond | 20. Birchy Basin | 33. Sandy Point | 47. Fisherman's Cove |
| 7. East Fox Islands | 21. Grand Codroy Estuary | 34. Skipper's Pond | |
| 8. Turr Island | 22. St. George's River Estuary | 35. Back-Up Steadies | |
| 9. Twin Islands | 23. Apron Island | 36. Bear Cove Steadies | |
| 10. James Island | 24. Green Island | 37. Ragged Harbour River | |
| 11. Hare Island | 25. Wreck Island | 38. Traytown | |
| 12. Granby Point | 26. Harbour Island | 39. Port Blandford | |
| 13. Cape Freels | 27. Cinq Cerf Bay | 40. Long Pond | |
| 14. Stag Island | | 41. Well Pond | |

Service Layer Credits: Esri, HERE, Garmin, (c) OpenStreetMap contributors, and the GIS user community

Note: Points are an approximation of location only and do not represent area.