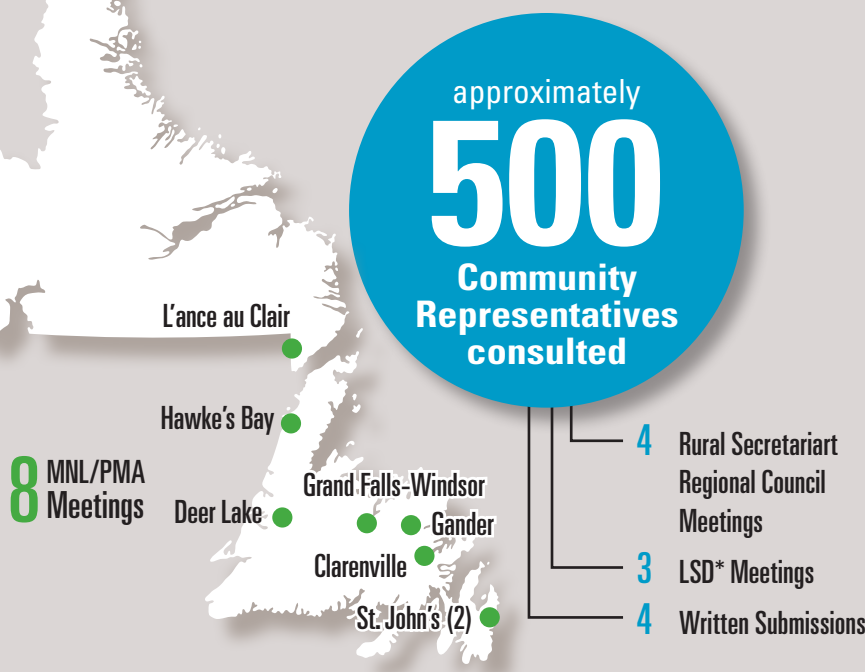


Fiscal Framework What we heard

Province-Wide Consultation Process

2014



Extensive External Stakeholders and Public Consultations

- Construction
- Recreation
- Hospitality
- Business



Online Surveys Submitted

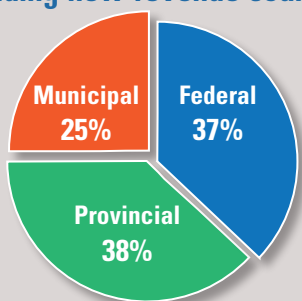


Telephone Surveys Conducted

Revenue Sources

96% of PMA*/MNL* Respondants indicated that municipalities

Need New Revenue Sources
Who should be responsible for funding new revenue sources?



Business sector stakeholders stated that there should be no new taxes imposed on businesses

Public opinion was mixed: some indicated willingness to pay more for new/improved services; many were not

Service Delivery

Top Expenditure Pressures

As identified by PMA/MNL community representatives



Telephone/Online Survey Results

1. Roads

- Abundance of potholes
- Aren't repaired properly or in a timely manner

2. Drinking Water

- Too many boil orders
- Outdated/mismanaged water treatment systems

3. Sewer/Wastewater

- Issues with raw sewage outfalls
- Outdated/mismanaged facilities

Regional Cooperation



78%

share at least one service with another community

82%

felt sharing services with other communities results in the same to much better level of service

Governance

PMA/MNL & Other Community Representatives:

- There is a need for a new governance model.

PMA/MNL:

- LSDs and unincorporated areas should be brought under a new governance model.

Multiple External Stakeholders

Support regional cooperation in the province (e.g. infrastructure, development, recreation, wastewater, fire protection)

Summary of results from the 2014 Fiscal Framework consultations. More information can be found in the accompanying "What We Heard" document.

* LSD: Local Service District
MNL: Municipalities Newfoundland and Labrador
PMA: Professional Municipal Administrators