

2005 08 26

Department of Environment and Conservation  
Environmental Assessment Division

## **ENVIRONMENTAL ASSESSMENT BULLETIN**

Environment and Conservation Minister Tom Osborne has announced the following event relative to Part 10 Environmental Assessment of the Environmental Protection Act.

### **UNDERTAKING RELEASED:**

**Port aux Basques to Belle Isle (Appalachian) Hiking Trail** (Reg. 1194)  
**Proponent: International Appalachian Trail NL Chapter Inc.**

The Minister has released the Appalachian Hiking Trail from further environmental assessment review subject to the following conditions:

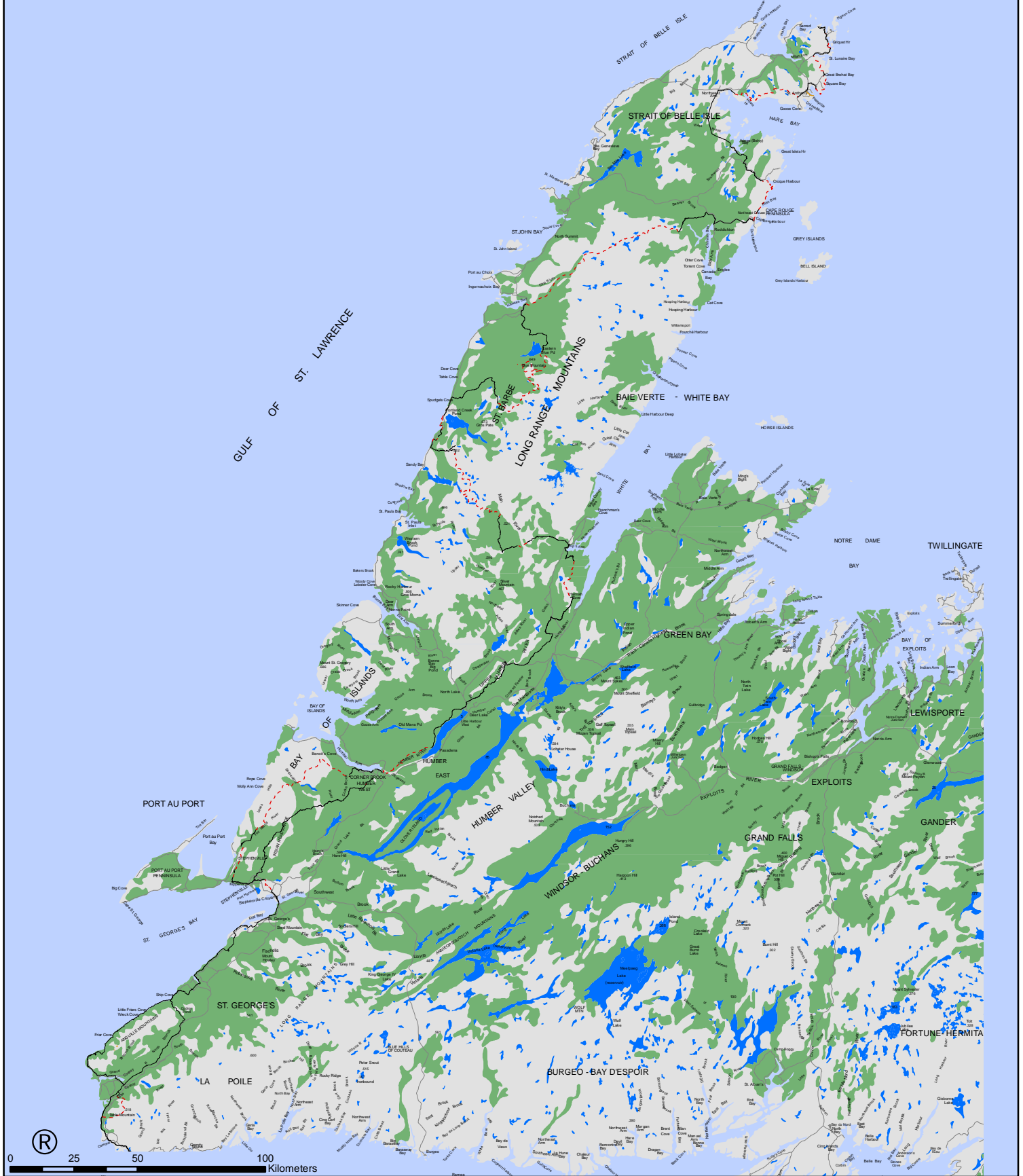
- The attached overview map (titled: Amended July 2005) will be the final route for the Appalachian Trail.
- The following trail routings must be implemented:
  - Cape John (Cape Anguille) - the existing Cormack Trail (located along the coast) must be used.
  - Highlands of St. John - the alternate route shown on maps 15(I & III) must be used instead of maps 15(A-C).
  - Cloud River - the alternate route shown on map 15(II) has a four kilometre section moved to the north.
  - Mare Cove - the route shown on map 16(A) is not to be used.
- The Parks and Natural Areas Division and the Wildlife Division must be consulted prior to final route selection and trail construction through: The Arches Provincial Park; Sir Richard Squires Memorial Provincial Park; Main River Canadian Heritage River Waterway Park; Table Mountain International Biological Program Site; and, the Serpentine Lake / Lewis Hills Public Reserve areas.
- The Wildlife Division must be consulted prior to trail construction through Newfoundland pine marten critical habitat, areas with endangered rare plants, and caribou calving grounds.
- Gender equity provisions be included when tendering contracts and advertising positions, and gender equity be considered when awarding contracts and hiring workers.

Further information may be obtained by contacting the Director of Environmental Assessment at (709) 729-4211 or toll-free: 1-800-563-6181 or by mail to:

Director, Environmental Assessment Division  
Department of Environment and Conservation  
West Block, Confederation Building  
P.O. Box 8700, St. John's, NL, A1B 4J6

Environmental Assessment Information is on the Government Web Site at  
<http://www.gov.nl.ca/env>

# Overview of the International Appalachian Trail Extended into Newfoundland [Amended July 2005]



- - - New IAT Route
- Existing Route
- Alternative IAT Route

Map created by:  
Inland Fish & Wildlife Division HQ  
Information provided by:  
Mr. Paul Wylezol and IAT NL

The IFW does not take  
any responsibility for the  
integrity of the information  
provided.

Projection Information:  
Datum NAD 83/ TM/ Zone 21  
Corner Brook, Winter 2004/ 2005