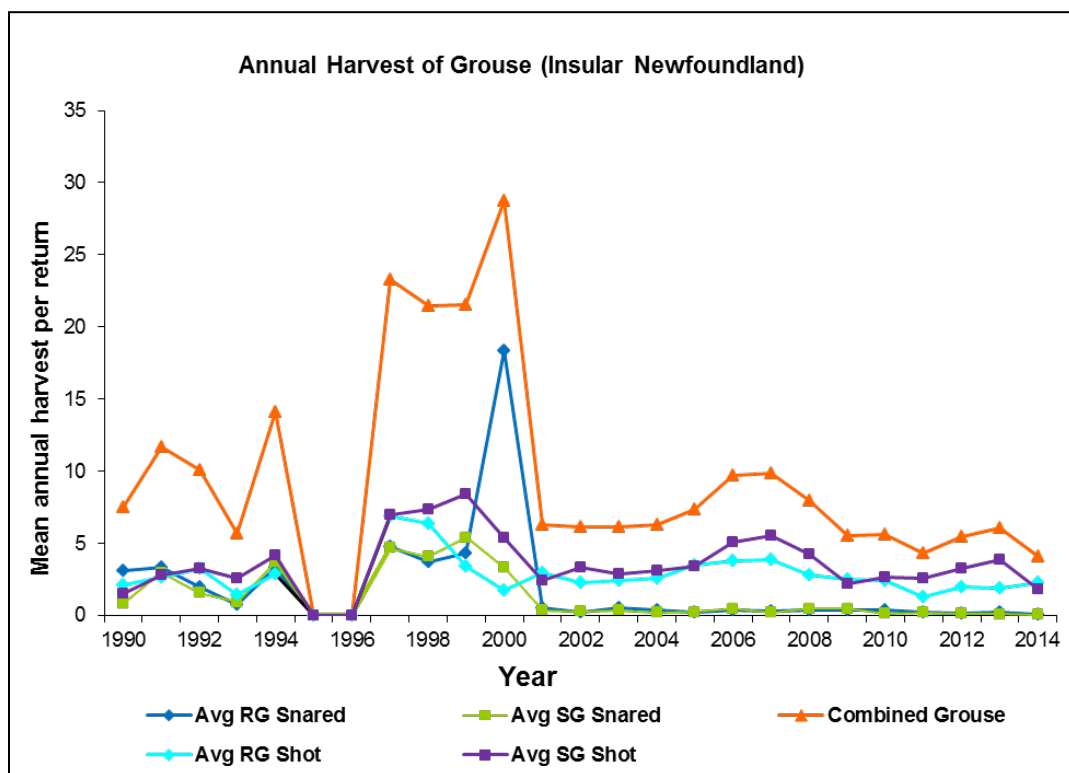
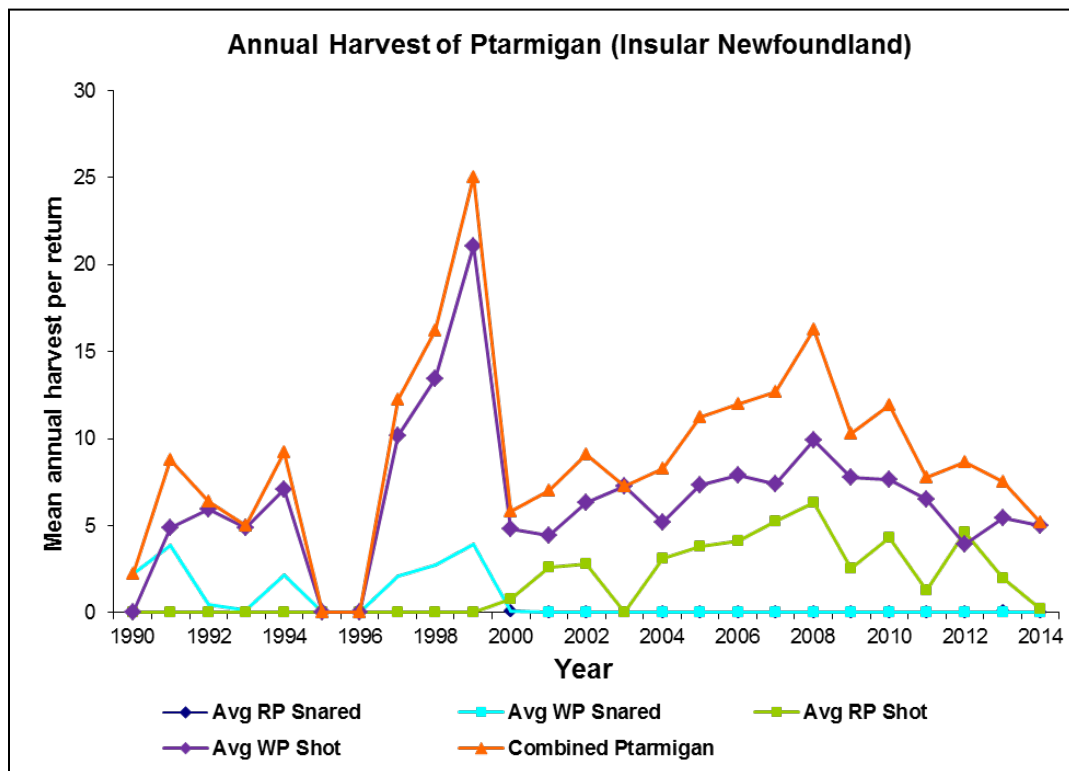
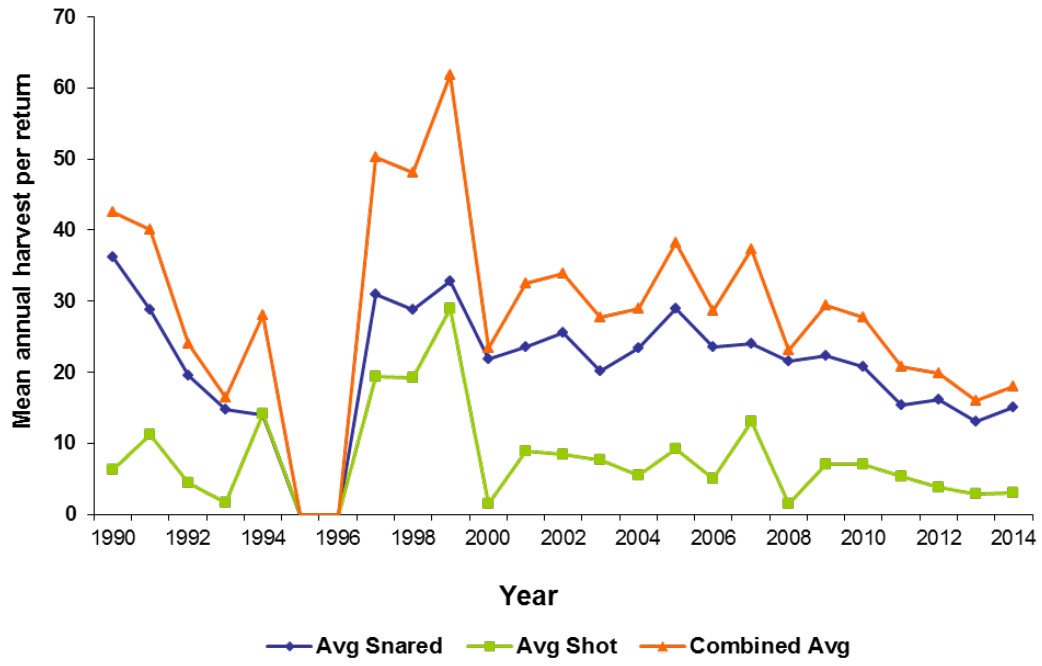


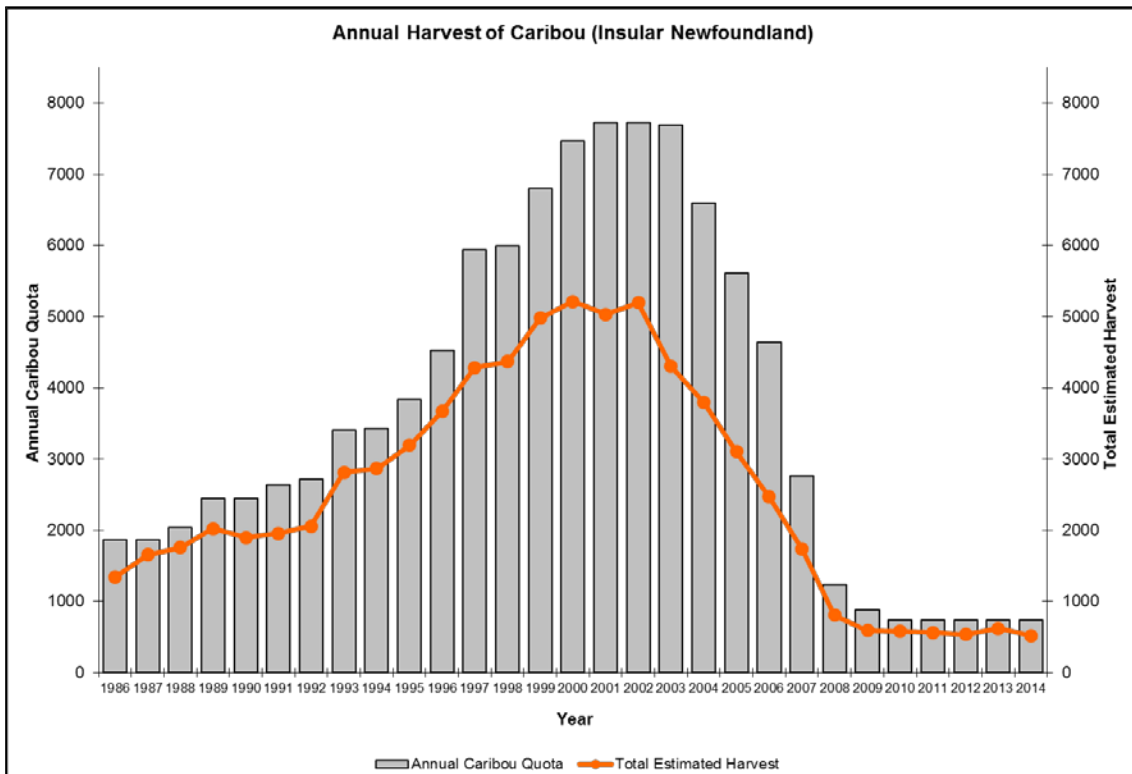
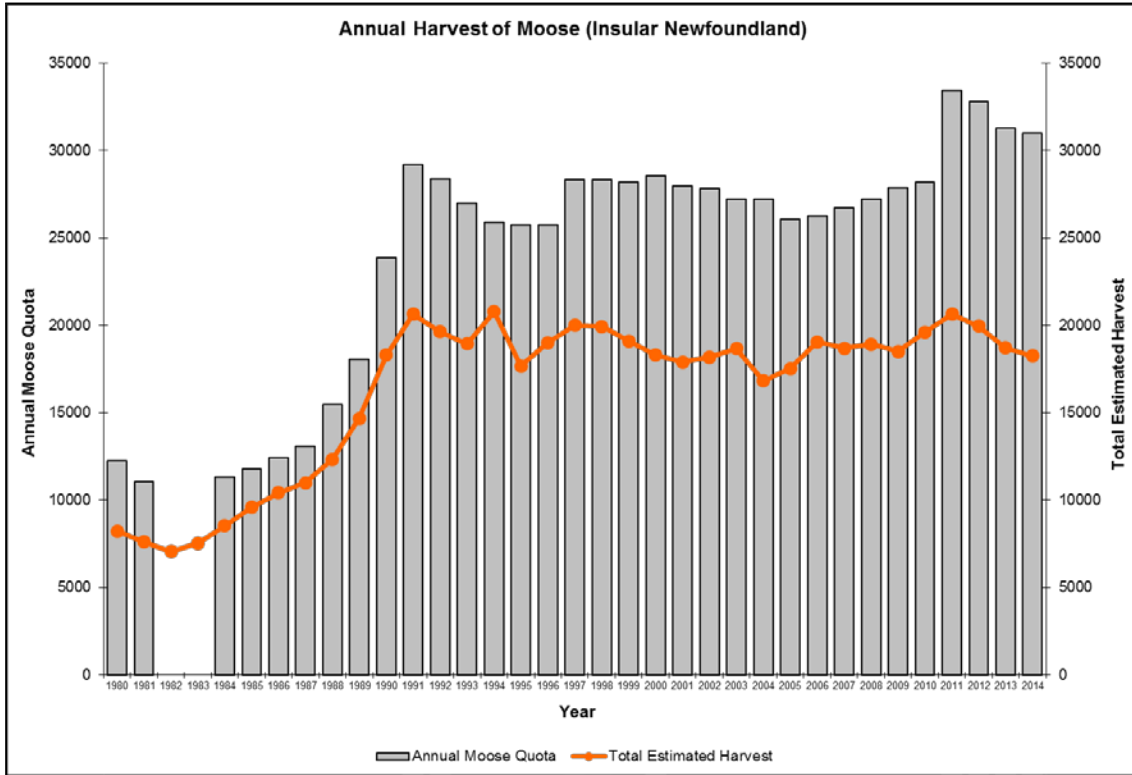
SMALL GAME SPECIES

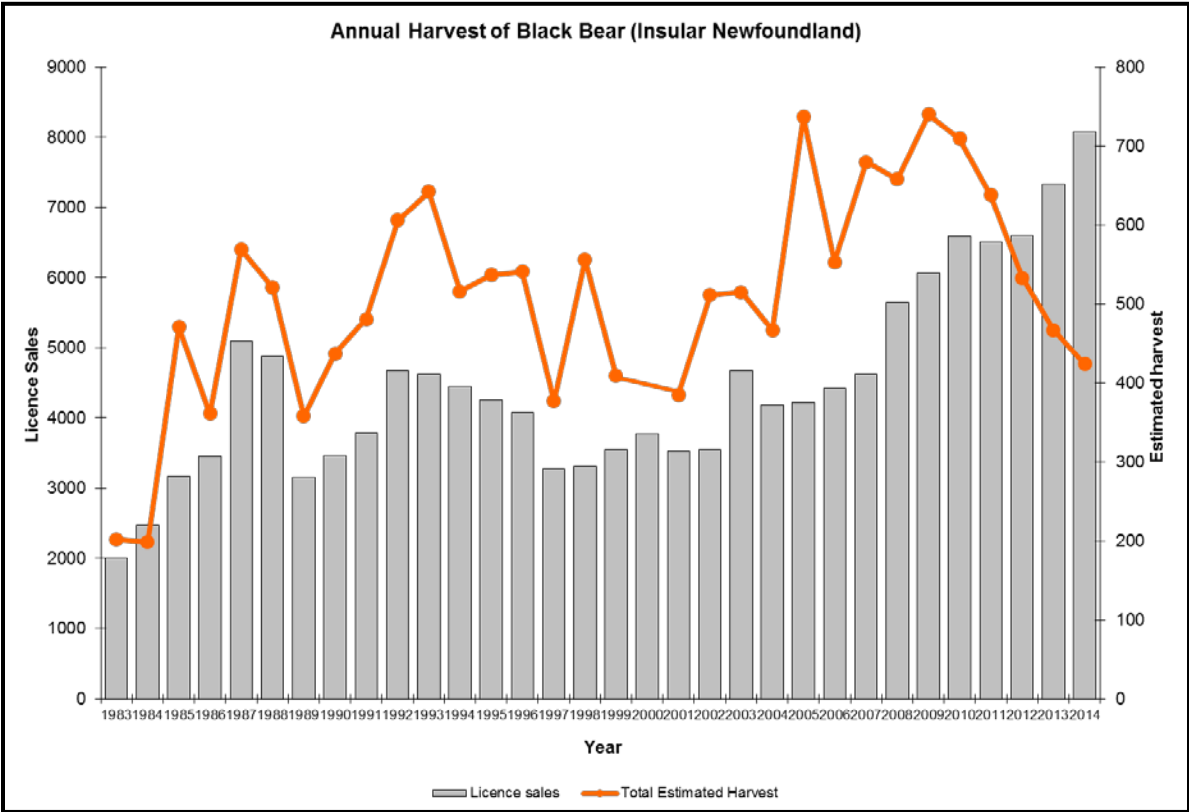


Annual Harvest of Snowshoe Hare (Insular Newfoundland)

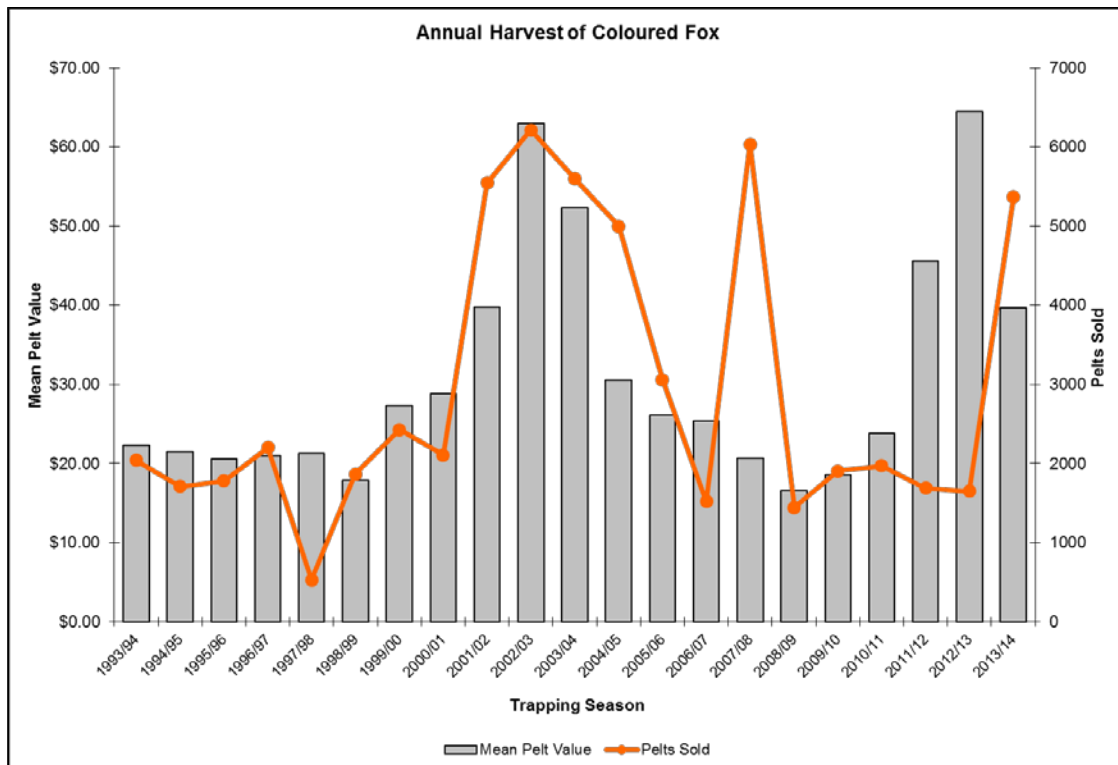
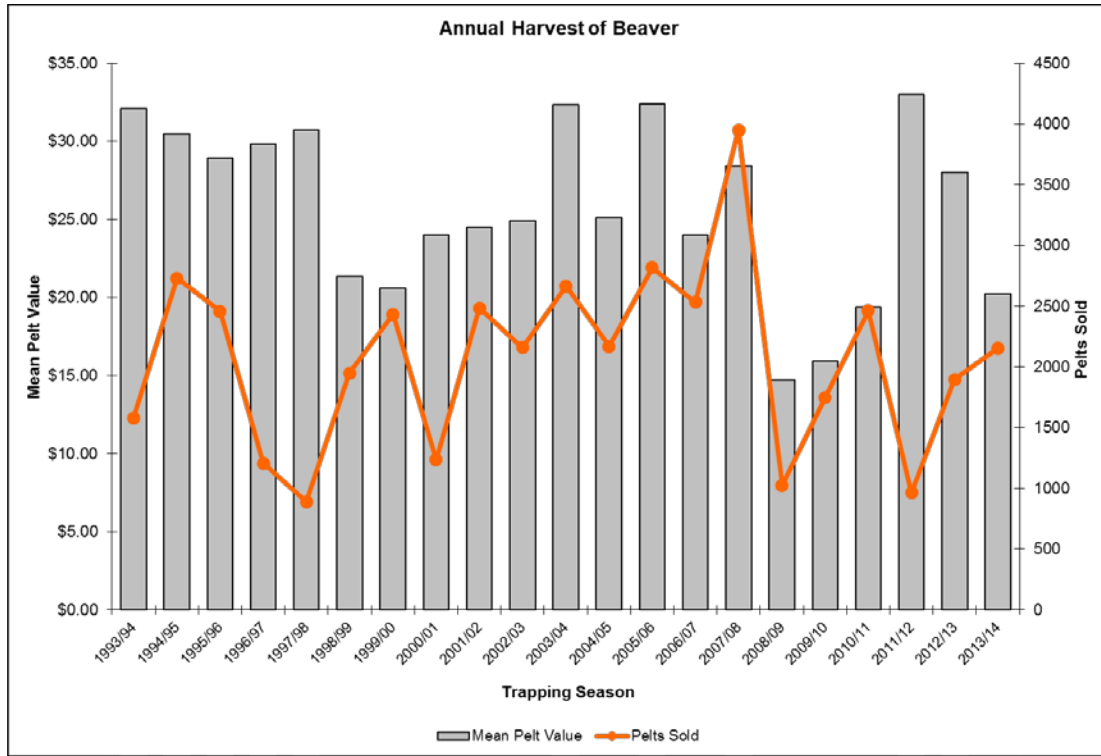


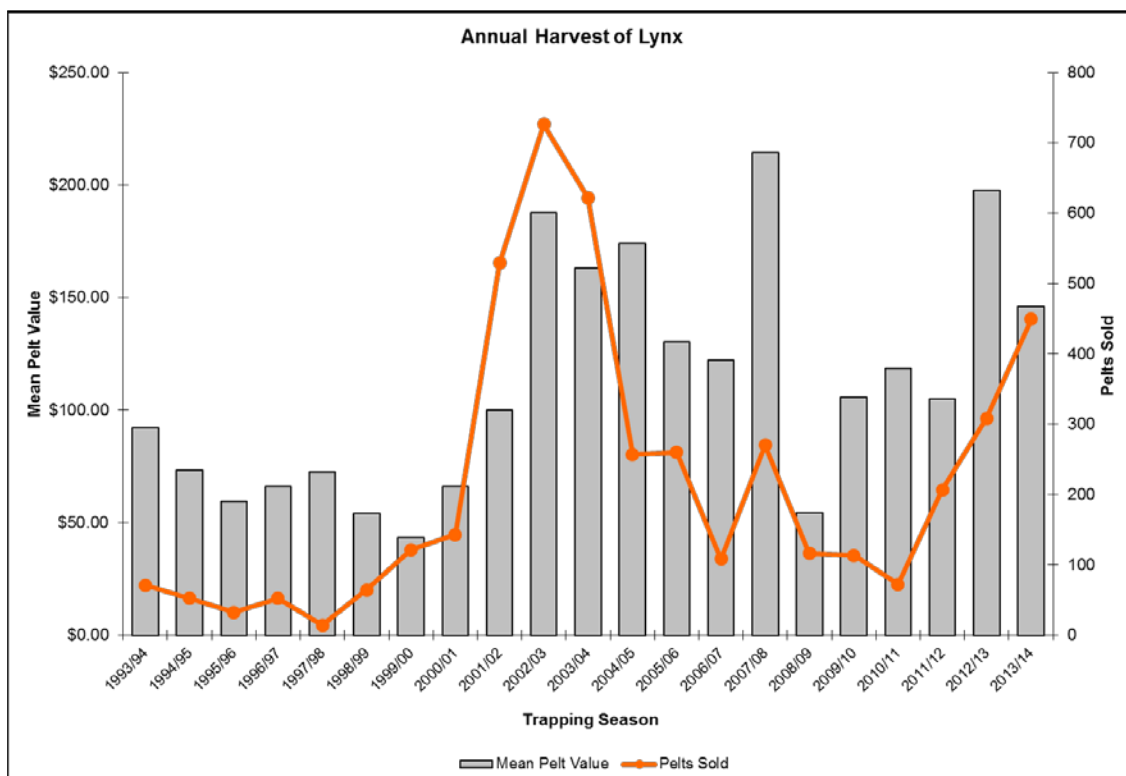
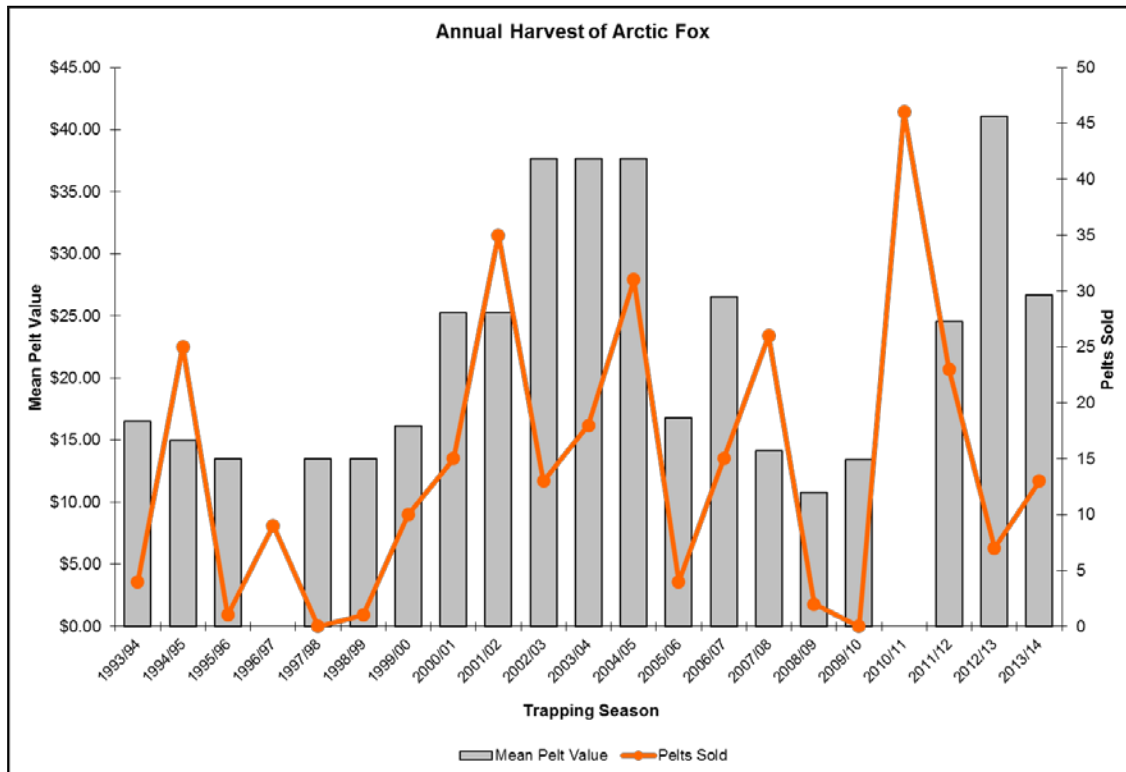
BIG GAME SPECIES

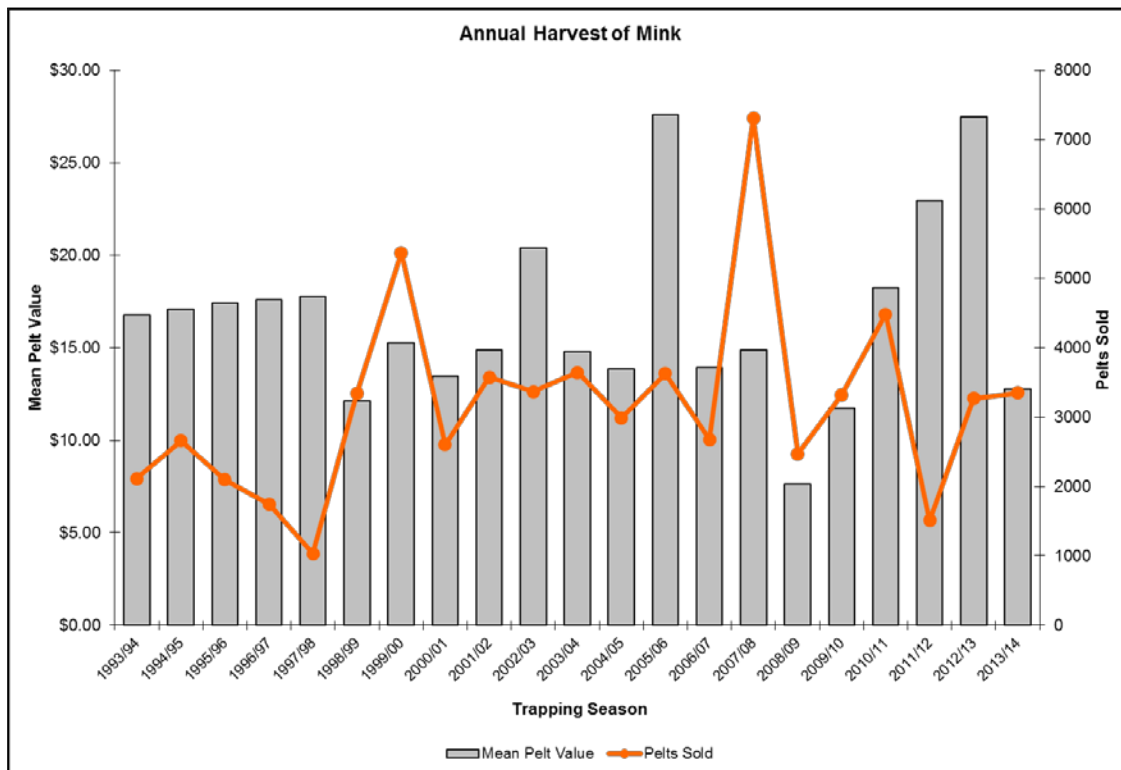
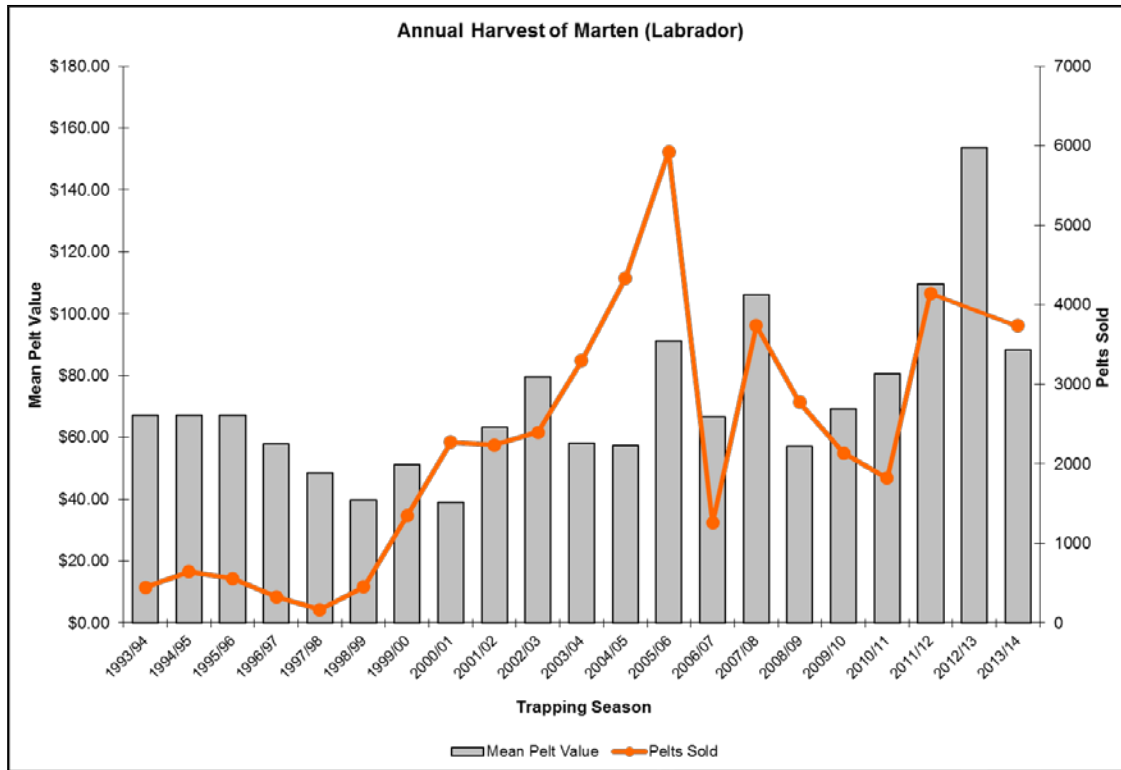


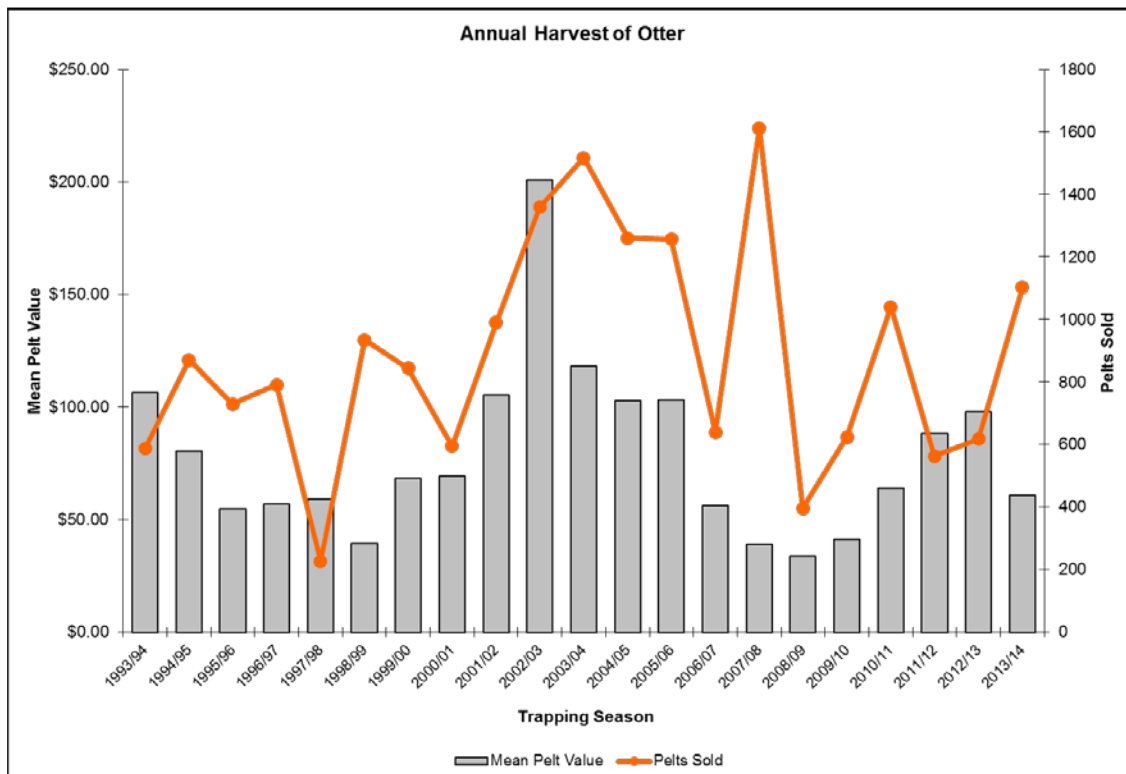
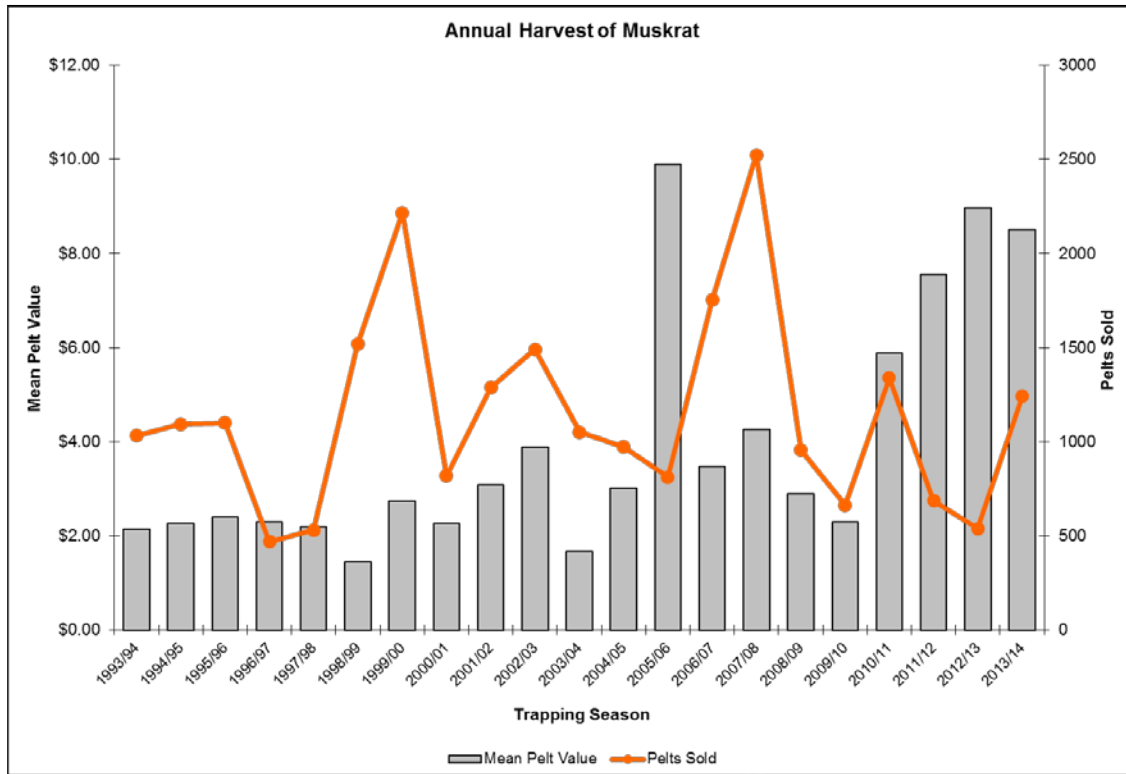


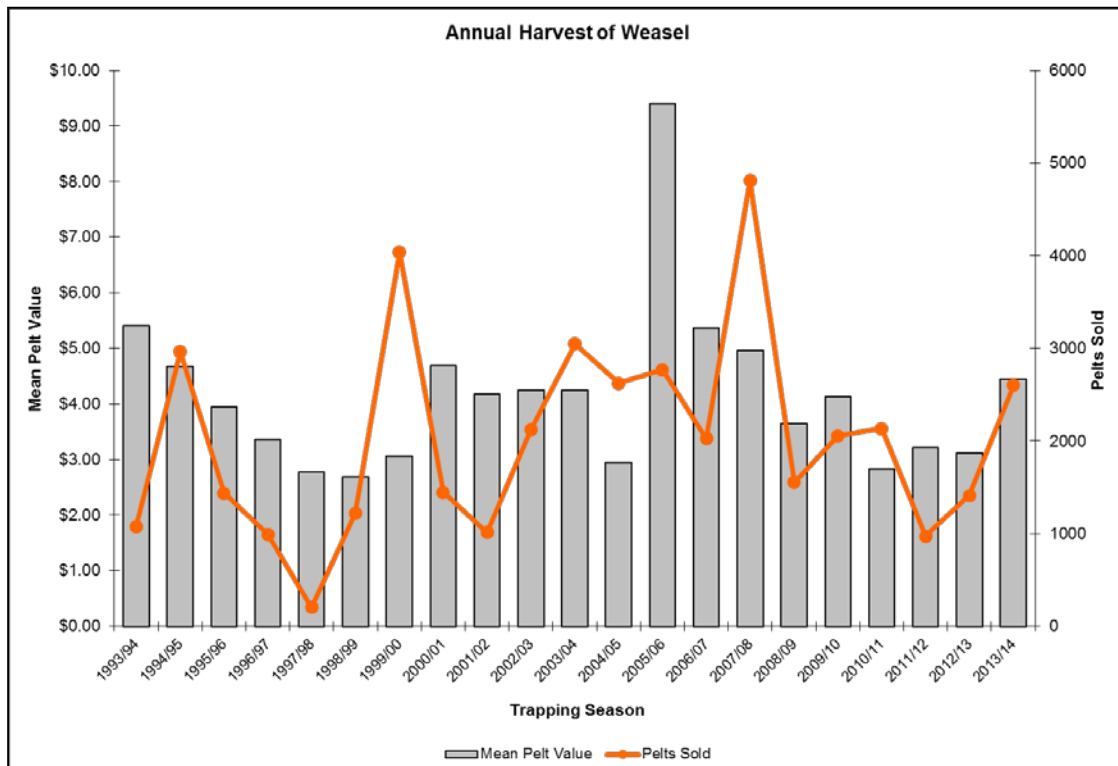
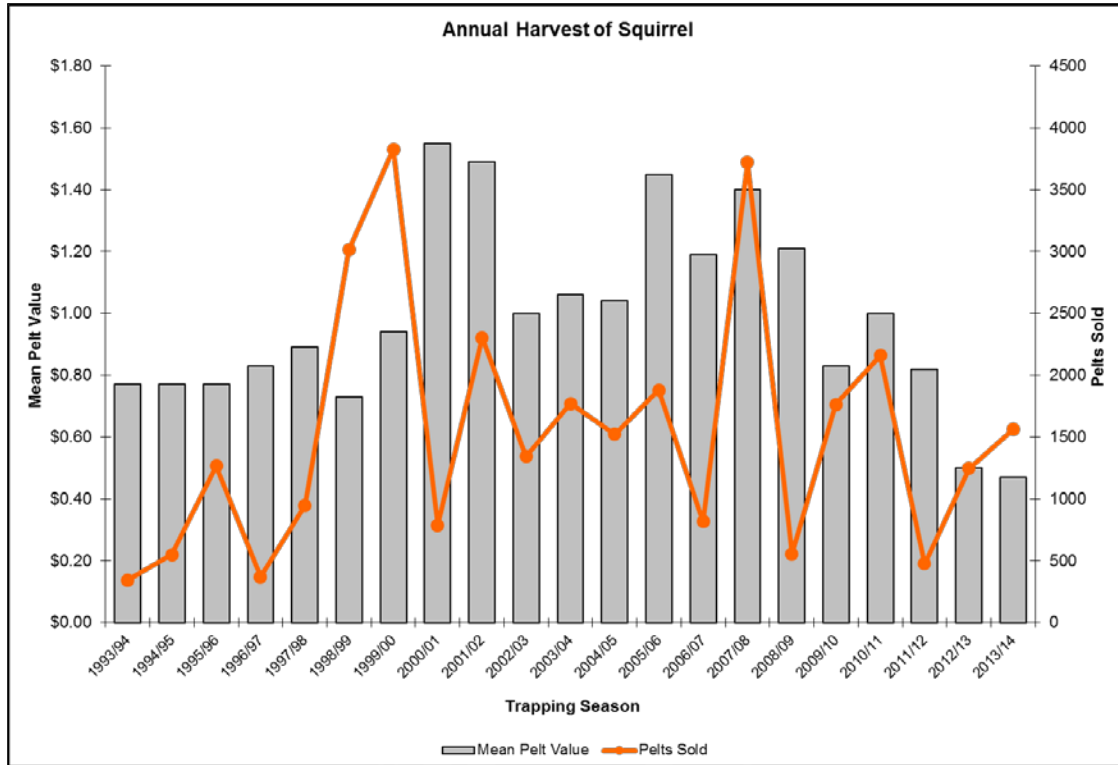
FURBEARING SPECIES

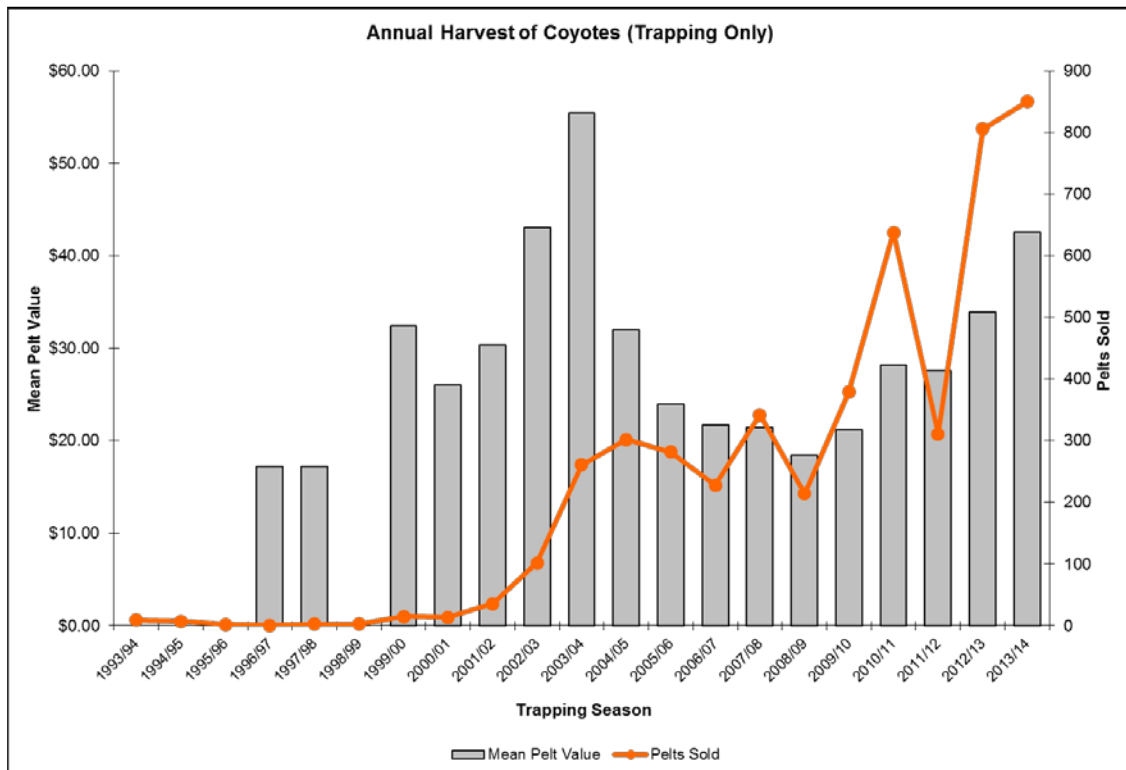
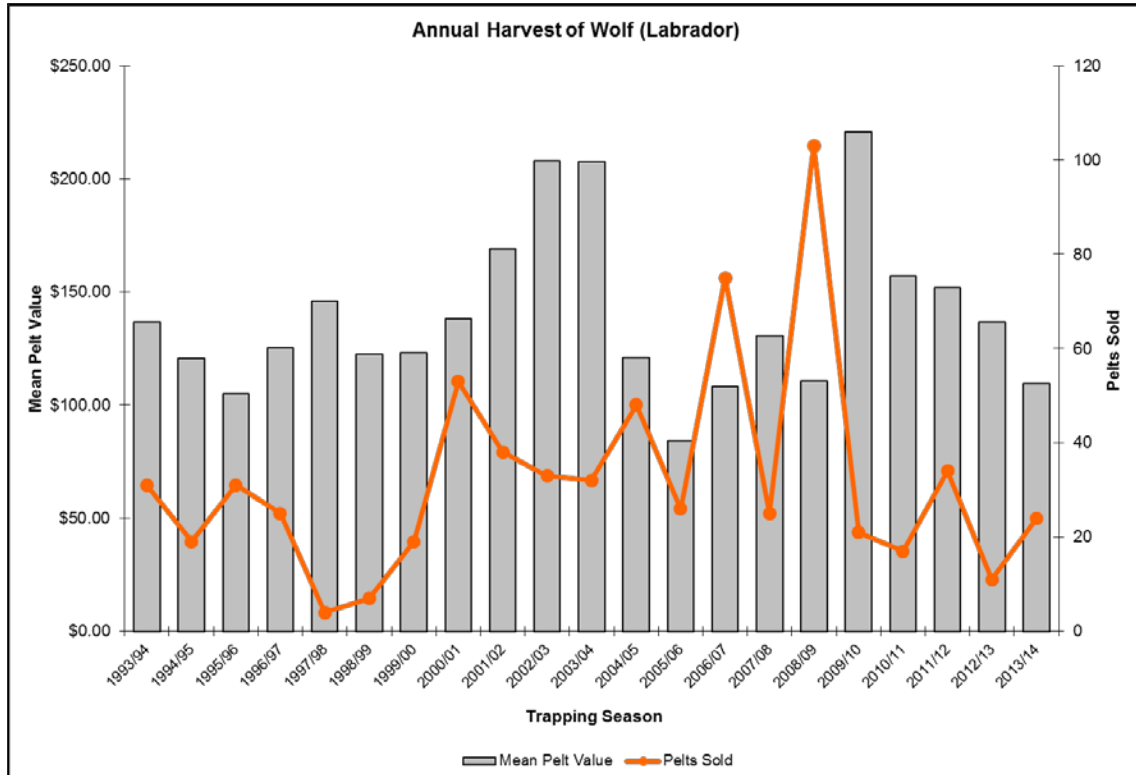


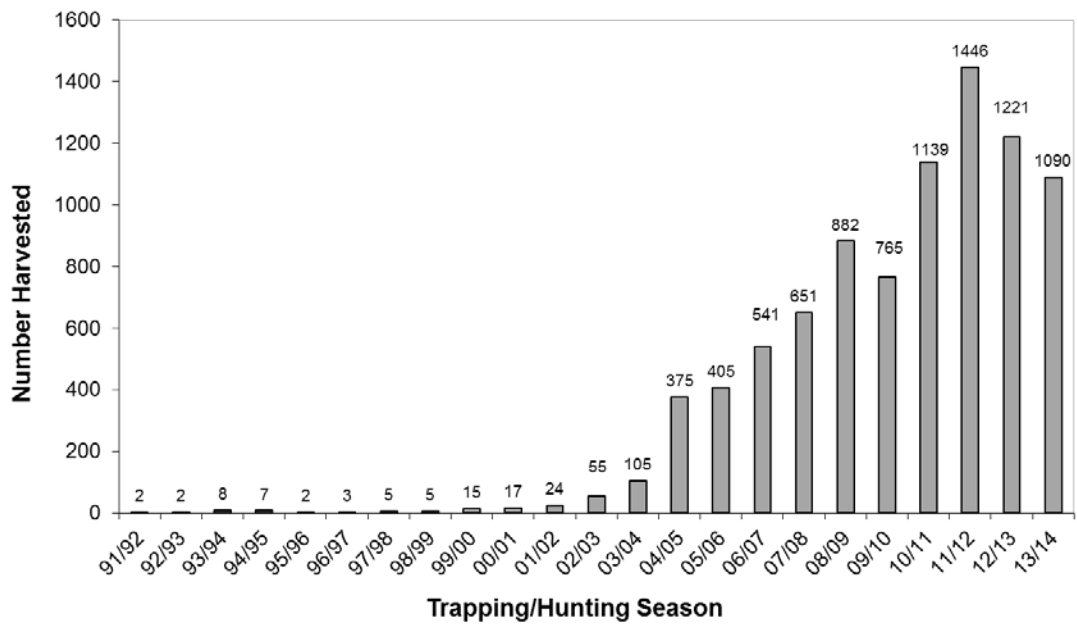












The number of coyotes harvested in Newfoundland during the 1991/92 through 2013/14 trapping/hunting seasons as determined from coyote registration forms. A specific coyote hunting season was initiated in 2004/05.