

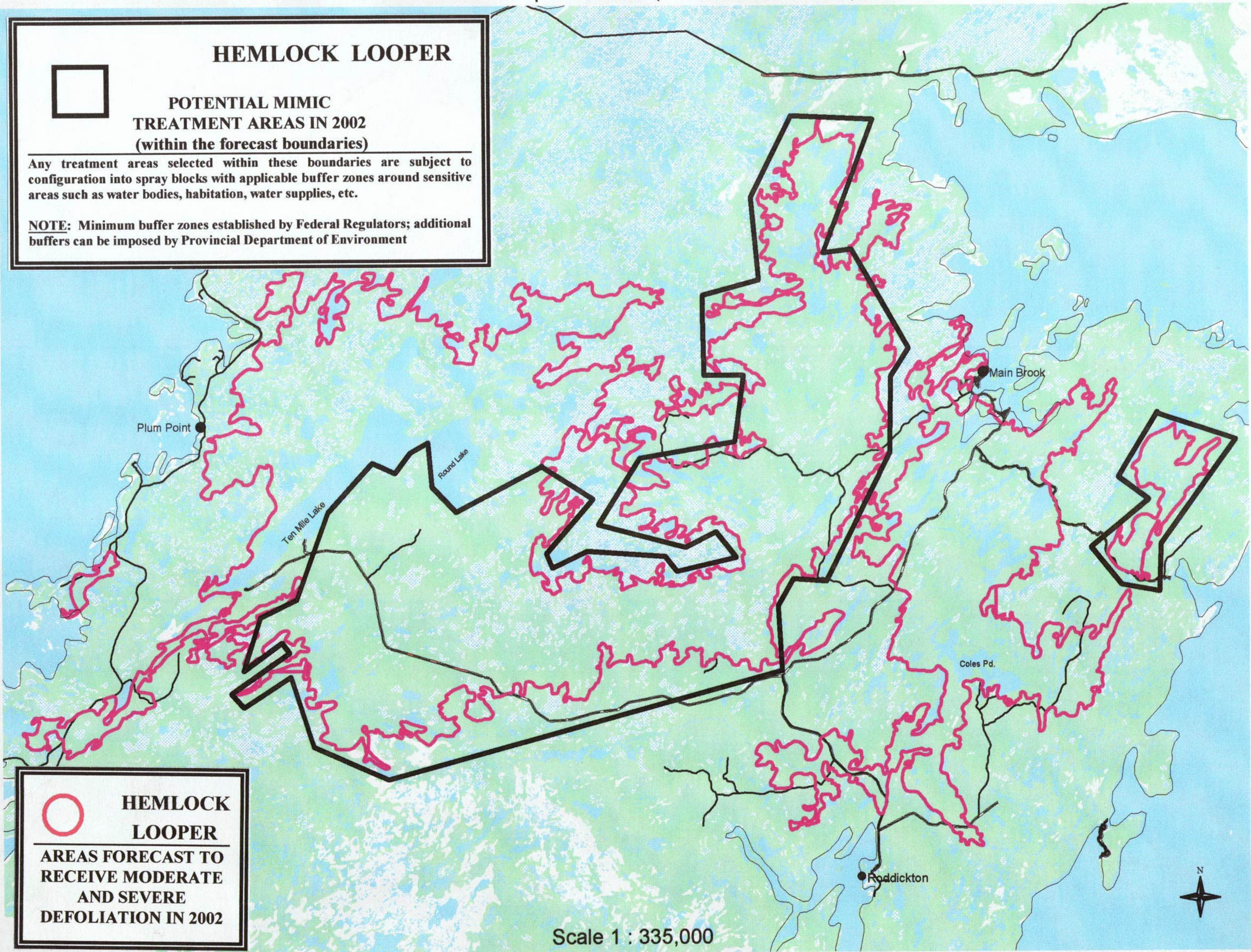
HEMLOCK LOOPER



**POTENTIAL MIMIC
TREATMENT AREAS IN 2002
(within the forecast boundaries)**

Any treatment areas selected within these boundaries are subject to configuration into spray blocks with applicable buffer zones around sensitive areas such as water bodies, habitation, water supplies, etc.

NOTE: Minimum buffer zones established by Federal Regulators; additional buffers can be imposed by Provincial Department of Environment



HEMLOCK LOOPER

**AREAS FORECAST TO
RECEIVE MODERATE
AND SEVERE
DEFOLIATION IN 2002**