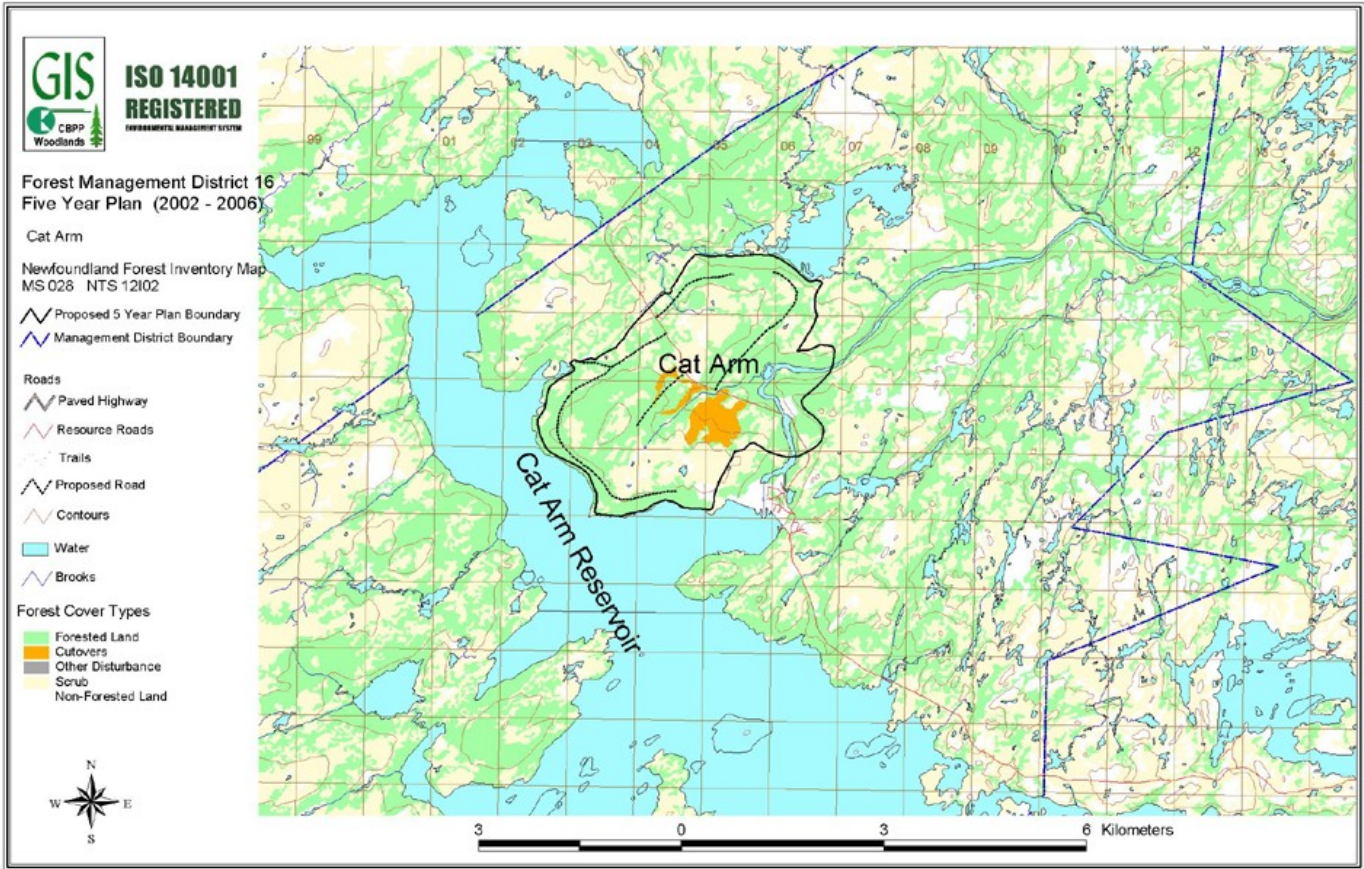




		CORNER BROOK PULP & PAPER LIMITED FIVE YEAR OPERATING PLAN			ISO 14001 REGISTERED <small>ENVIRONMENTAL MANAGEMENT SYSTEM</small>	
		FMD: 16		Plan Period: Jan 1, 2002 - Dec 31, 2006		
Operating Area:		Cat Arm		Inventory Map #: 028-31,21		
Harvest Area #:		K16-30		NTS Map #: 12 I 02		
Forest Inventory						
Gross		Net		Working Group		
Volume:	61,336 m3	Volume:	44,898 m3	bF:	65 %	
Area:	554 ha	Area:	554 ha	bS:	35 %	
Operational Considerations:						
Harvest System:		Mechanical , Conventional and Cable Systems				
Terrain Conditions:		Rolling terrain with shallow topsoils over bedrock. The merchantable forest is broken by bog and scrub areas.				
Other Considerations:						
Wildlife -		Regular meetings with DFRA to review annual operating plans.				
Water -		Regulatory 20 meter buffers, 100 meter buffers on main stem of salmon rivers				
Sawmills -		The sawmill at Hampden will get a fiber supply form this area.				
Ecotourism -		Public access to all company built roads.				
Recreation -		Public access to all company built roads.				

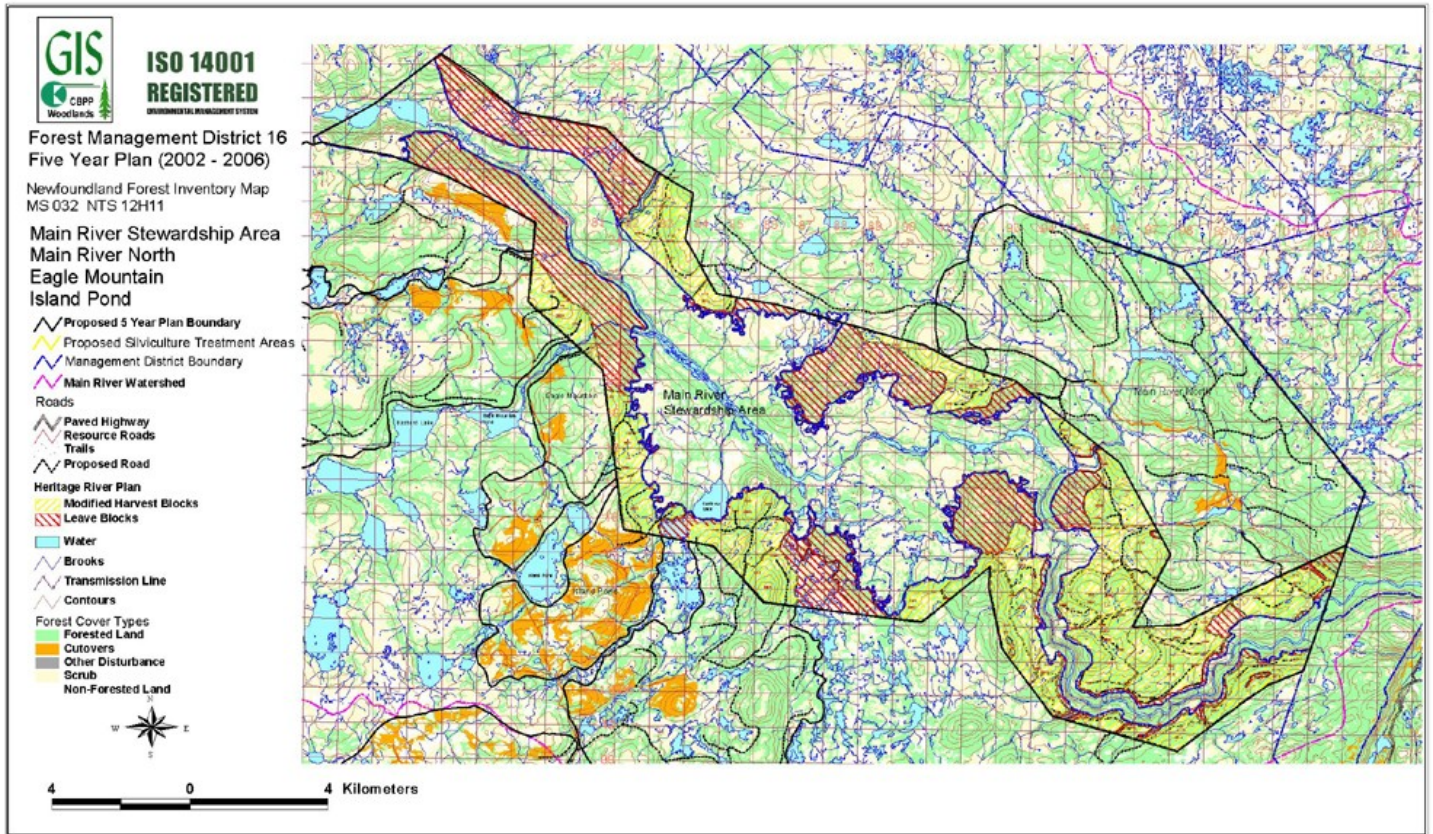



		CORNER BROOK PULP & PAPER LIMITED FIVE YEAR OPERATING PLAN			ISO 14001 REGISTERED <small>ENVIRONMENTAL MANAGEMENT SYSTEM</small>	
		FMD: 16		Plan Period: Jan 1, 2002 - Dec. 31 2006		
Operating Area: M.R. Stewardship		Inventory Map #: 032-12,13,14,22,23,24,32,33				
Harvest Area #: K16 - 32		NTS Map #: 12 H 14,15				
Forest Inventory						
Gross		Net		Working Group		
Volume:	373,676 m3	Volume:	136,765 m3	bF:	68 %	
Area:	3188 ha	Area:	3188 ha	bS:	32 %	
Operational Considerations:						
Harvest System:	Selective Harvest, Mechanical, Conventional, and Cable Systems.					
Terrain Conditions:	Rolling terrain, some steep slopes, shallow topsoil over mineral soil and rock. Merchantable forest broken by scrub and bog.					
Other Considerations:						
All other considerations are addressed in the Main River Heritage River Plan.						


		CORNER BROOK PULP & PAPER LIMITED FIVE YEAR OPERATING PLAN			ISO 14001 REGISTERED <small>ENVIRONMENTAL MANAGEMENT SYSTEM</small>	
		FMD: 16		Plan Period: Jan 1, 2002 - Dec 31, 2006		
Operating Area: Main River North		Inventory Map #: 032-14,21,24, 033-11				
Harvest Area #: K16-26		NTS Map #: 12 H 14,15				
Forest Inventory						
Gross		Net		Working Group		
Volume:	426,062 m3	Volume:	155,938 m3	bF:	71 %	
Area:	3600 ha	Area:	3600 ha	bS:	29 %	
Operational Considerations:						
Harvest System:	Selective Harvest, Mechanical , Conventional and Cable Systems					
Terrain Conditions:	Rolling terrain with shallow top soil over mineral soil and bedrock. The merchantable forest is broken by bog and scrub areas.					
Other Considerations:						
Wildlife -	Pine Marten study, connectivity working group with Gross Morne National Park, regular meetings with DFRA to review annual operating plans.					
Water -	Regulatory 20 meter buffers, 100 meter buffers on main stem of salmon rivers, 30 meter no grub zones, guidelines for working inside protected watersheds.					
Outfitters-	Harvest schedules, selective harvest plan, road locations.					
Ecotourism -	Main River Heritage River Plan, selective harvest plan.					
Sawmills-	Sawlog exchange agreement will continue.					
Recreation -	Public access to all company built roads, Main River Heritage Plan, regular meetings with local snowmobile clubs.					
Mining -	Approval process to allow mining and quarry activities on CBPP limits. Avoid blasting near a granite quarry by Leslie Lake.					

		CORNER BROOK PULP & PAPER LIMITED FIVE YEAR OPERATING PLAN		ISO 14001 REGISTERED <small>INTERNATIONAL STANDARD 15000</small>	
		FMD: 16		Plan Period: Jan 1, 2002 - Dec 31, 2006	
Operating Area: Eagle Mountain		Inventory Map #: 032-12,22			
Harvest Area #: K16-17		NTS Map #: 12 H 14			
Forest Inventory					
Gross		Net		Working Group	
Volume:	59,663 m3	Volume:	21,837 m3	bF:	75 %
Area:	537 ha	Area:	537 ha	bS:	25 %
Operational Considerations:					
Harvest System:	Selective Harvest, Mechanical , Conventional and Cable Systems				
Terrain Conditions:	Rolling terrain with shallow top soil over mineral soil and bedrock. The merchantable forest is broken by bog and scrub areas.				
Other Considerations:					
Wildlife -	Pine Marten study, connectivity working group with Gross Morne National Park, regular meetings with DFRA to review annual operating plans.				
Water -	Regulatory 20 meter buffers, 100 meter buffers on main stem of salmon rivers, 30 meter no grub zones, guidelines for working inside protected watersheds.				
Outfitters-	Harvest schedules, selective harvest plan, road locations, landscape design.				
Ecotourism -	Main River Heritage River Plan, selective harvest plan.				
Sawmills-	Sawlog exchange agreement will continue.				
Recreation -	Public access to all company built roads, Main River Heritage Plan, regular meetings with local snowmobile clubs.				
Mining -	Approval process to allow mining and quarry activities on CBPP limits.				

		CORNER BROOK PULP & PAPER LIMITED FIVE YEAR OPERATING PLAN			ISO 14001 REGISTERED <small>INTERNATIONAL STANDARD 15000</small>	
		FMD: 16		Plan Period: Jan 1, 2002 - Dec 31, 2006		
Operating Area: Island Pond		Inventory Map #: 032-12,13				
Harvest Area #: K16-16		NTS Map #: 12 H 14				
Forest Inventory						
Gross		Net		Working Group		
Volume:	30,079 m3	Volume:	11,009 m3	bF:	75 %	
Area:	254 ha	Area:	254 ha	bS:	25 %	
Operational Considerations:						
Harvest System:		Selective Harvest, Mechanical , Conventional and Cable Systems				
Terrain Conditions:		Rolling terrain with shallow top soil over mineral soil and bedrock. The merchantable forest is broken by bog and scrub areas.				
Other Considerations:						
Wildlife - Pine Marten study, connectivity working group with Gross Morne National Park, regular meetings with DFRA to review annual operating plans.						
Water - Regulatory 20 meter buffers, 100 meter buffers on main stem of salmon rivers, 30 meter no grub zones, guidelines for working inside protected watersheds.						
Outfitters - Harvest schedules, selective harvest plan, road locations, landscape design.						
Ecotourism - Main River Heritage River Plan, selective harvest plan.						
Sawmills - Sawlog exchange agreement will continue.						
Recreation - Public access to all company built roads, Main River Heritage Plan, regular meetings with local snowmobile clubs.						
Mining - Approval process to allow mining and quarry activities on CBPP limits.						



		CORNER BROOK PULP & PAPER LIMITED FIVE YEAR OPERATING PLAN			ISO 14001 REGISTERED <small>INTERNATIONAL STANDARD 15188</small>	
		FMD: 16		Plan Period: Jan 1, 2002 - Dec 31, 2006		
Operating Area: St Pauls Big Pond		Inventory Map #: 032-12,22,11,21				
Harvest Area #: K16-18		NTS Map #: 12 H 14				
Forest Inventory						
Gross		Net		Working Group		
Volume:	190,482 m ³	Volume:	69,716 m ³	bF:	77 %	
Area:	1815 ha	Area:	1815 ha	bS:	23 %	
Operational Considerations:						
Harvest System:		Selective Harvest, Mechanical , Conventional and Cable Systems				
Terrain Conditions:		Rolling terrain with shallow top soil over mineral soil and bedrock. The merchantable forest is broken by bog and scrub areas.				
Other Considerations:						
Wildlife -		Pine Marten study, connectivity working group with Gross Morne National Park, regular meetings with DFRA to review annual operating plans.				
Water -		Regulatory 20 meter buffers, 100 meter buffers on main stem of salmon rivers, 30 meter no grub zones, guidelines for working inside protected watersheds.				
Outfitters-		Harvest schedules, selective harvest plan, road locations, landscape design.				
Ecotourism -		Main River Heritage River Plan, selective harvest plan.				
Sawmills-		Sawlog exchange agreement will continue.				
Recreation -		Public access to all company built roads, Main River Heritage Plan, regular meetings with local snowmobile clubs.				
Mining -		Approval process to allow mining and quarry activities on CBPP limits.				

		CORNER BROOK PULP & PAPER LIMITED FIVE YEAR OPERATING PLAN		ISO 14001 REGISTERED <small>ENVIRONMENTAL MANAGEMENT SYSTEM</small>	
FMD: 16		Plan Period: Jan 1, 2002 - Dec 31, 2006			
Operating Area: Lower Four Ponds		Inventory Map #: 032-32,31,22,21			
Harvest Area #: K16-19		NTS Map #: 12 H 14			
Forest Inventory					
Gross		Net		Working Group	
Volume:	113,846 m3	Volume:	41,668 m3	bF:	76 %
Area:	1105 ha	Area:	1105 ha	bS:	24 %
Operational Considerations:					
Harvest System:		Selective Harvest, Mechanical , Conventional and Cable Systems			
Terrain Conditions:		Rolling terrain with shallow topsoil over mineral soil and bedrock. The merchantable forest is broken by bog and scrub areas.			
Other Considerations:					
Wildlife - Pine Marten study, connectivity working group with Gross Morne National Park, regular meetings with DFRA to review annual operating plans.					
Water - Regulatory 20 meter buffers, 100 meter buffers on main stem of salmon rivers, 30 meter no grub zones.					
Outfitters- Harvest schedules, selective harvest plan, road locations, landscape design.					
Ecotourism - Main River Heritage River Plan, selective harvest plan.					
Sawmills- Sawlog exchange agreement will continue.					
Recreation - Public access to all company built roads, Main River Heritage Plan, regular meetings with local snowmobile clubs.					
Mining - Approval process to allow mining and quarry activities on CBPP limits.					

