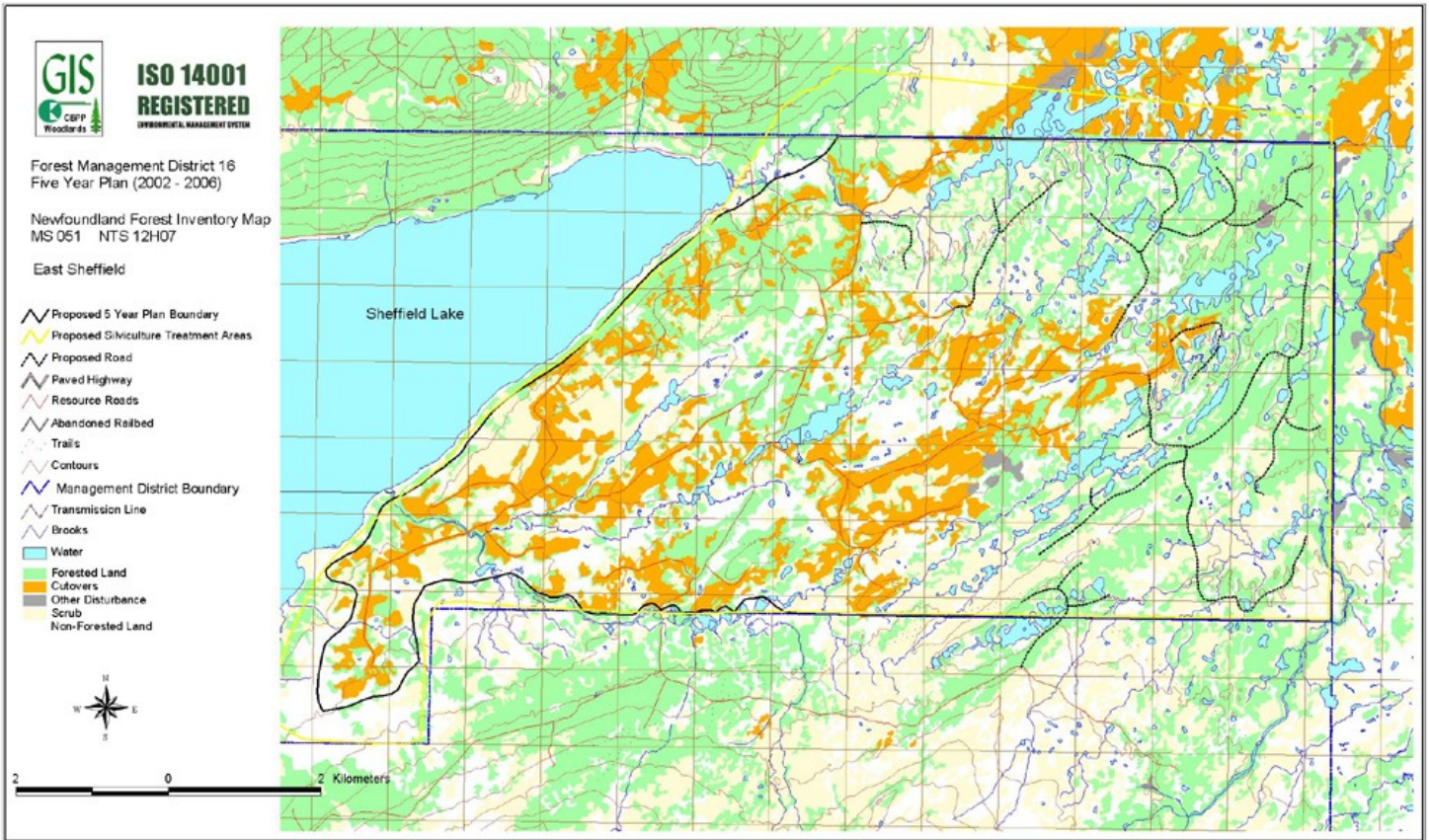
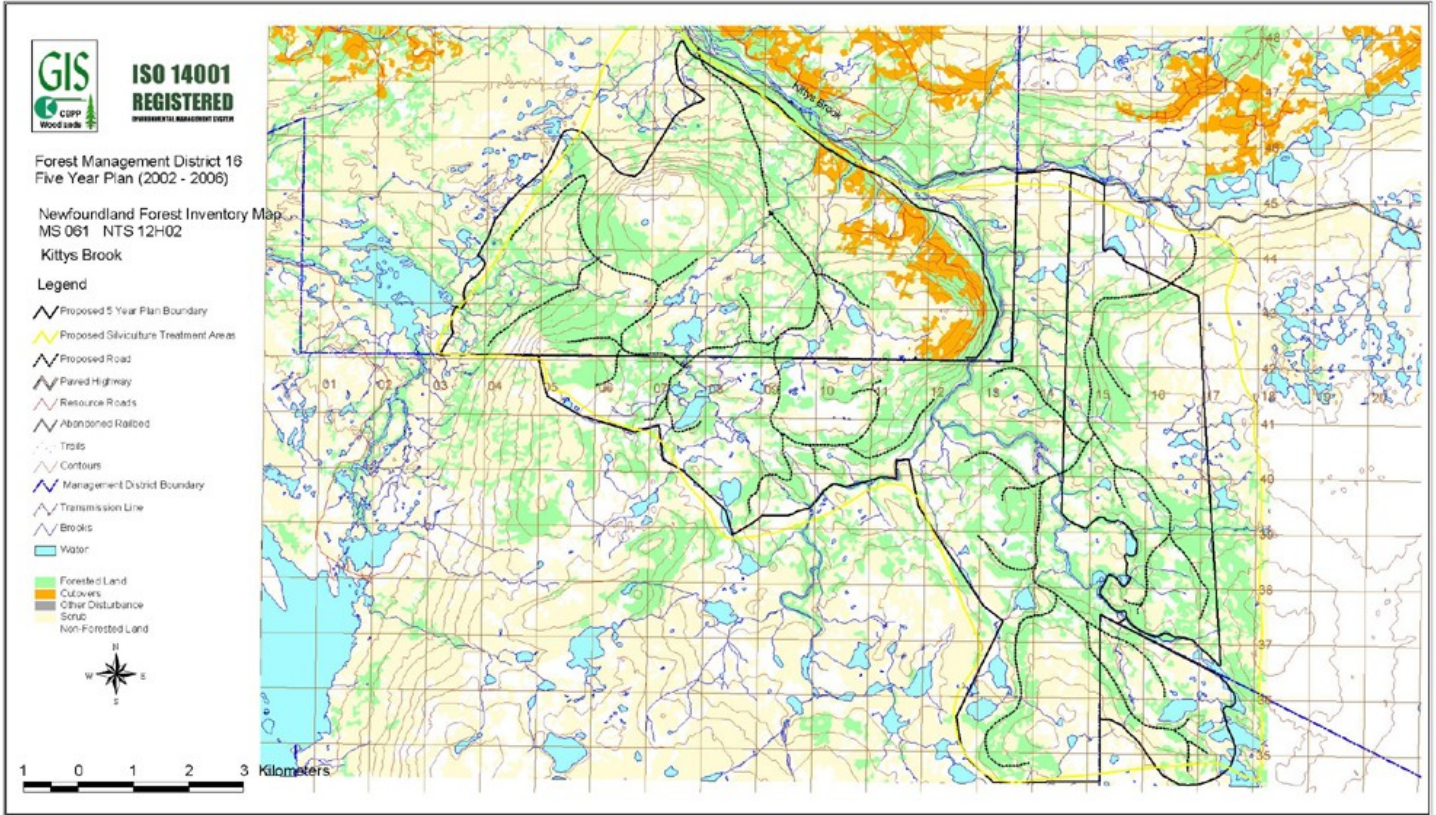

		CORNER BROOK PULP & PAPER LIMITED FIVE YEAR OPERATING PLAN		ISO 14001 REGISTERED <small>ENVIRONMENTAL MANAGEMENT SYSTEM</small>	
FMD: 16		Plan Period: Jan 1, 2002 - Dec 31, 2006			
Operating Area: East Sheffield		Inventory Map #: 051-14,24, 052-11,21			
Harvest Area #: K16-05		NTS Map #: 12 H 09, 08			
Forest Inventory					
Gross		Net		Working Group	
Volume:	47,810 m3	Volume:	34,997 m3	bF:	19 %
Area:	471 ha	Area:	471 ha	bS:	81 %
Operational Considerations:					
Harvest System:		Mechanical , Conventional and Cable Systems			
Terrain Conditions:		Flat terrain, moderate to shallow topsoil over mineral soil The merchantable forest is broken by bog and scrub areas.			
Other Considerations:					
Wildlife -		Pine Marten habitat study, regular meetings with DFRA to review annual operating plans.			
Water -		Regulatory 20 meter buffers, 100 meter buffers on main stem of salmon rivers, 30 meter no grub zones, guidelines for working inside protected watersheds.			
Outfitters-		Harvest and road construction scheduling to avoid conflicts, all outfitting locations plotted on CBPP harvest maps for planning purposes.			
Ecotourism -		Meetings with snowmobile tour operators. Public access to all company built roads.			
Sawmills-		Sawlog exchange agreement will continue. Commercial and domestic hardwood permits available for CBPP limits.			
Recreation -		Public access to all company built roads, regular meetings with local snowmobile clubs. Approval process for cottage development on CBPP limits. Meetings with local cabin owners association.			
Mining -		Approval process to allow mining and quarry activities on CBPP limits.			



		CORNER BROOK PULP & PAPER LIMITED FIVE YEAR OPERATING PLAN			ISO 14001 REGISTERED <small>ENVIRONMENTAL MANAGEMENT SYSTEM</small>	
		FMD: 16		Plan Period: Jan 1, 2002 - Dec 31, 2006		
Operating Area: Kittys Brook		Inventory Map #: 060-21,22,31,32				
Harvest Area #: K16-08		NTS Map #: 12 H 03				
Forest Inventory						
Gross		Net		Working Group		
Volume:	320,554 m3	Volume:	234,646 m3	bF:	43 %	
Area:	2389 ha	Area:	2389 ha	bS:	57 %	
Operational Considerations:						
Harvest System:		Mechanical , C onventional and Cable Systems				
Terrain Conditions:		Flat rolling terrain, moderate to shallow topsoil over mineral soil The merchantable forest is broken by bog and scrub areas.				
Other Considerations:						
Wildlife -		Pine Marten habitat study, regular meetings with DFRA to review annual operating plans.				
Water -		Regulatory 20 meter buffers, 100 meter buffers on main stem of salmon rivers, 30 meter no grub zones, guidelines for working inside protected watersheds.				
Outfitters -		Harvest and road construction scheduling to avoid conflicts, all outfitting locations plotted on CBPP harvest maps for planning purposes.				
Ecotourism -		Meetings with snowmobile tour operators. Public access to all company built roads. Agreement with Dept. of Tourism to maintain old railbed and bridges while operating and to enhance when finished for future public use.				
Sawmills -		Sawlog exchange agreement will continue. Commercial and domestic hardwood permits available for CBPP limits. Local sawmill operator will have a fibre supply from this area.				
Recreation -		Public access to all company built roads, regular meetings with local snowmobile clubs. Approval process for cottage development on CBPP limits. Red Pine stands along Sandy Lake to be protected.				
Mining -		Approval process to allow mining and quarry activities on CBPP limits.				



		CORNER BROOK PULP & PAPER LIMITED FIVE YEAR OPERATING PLAN		ISO 14001 REGISTERED <small>INTERNATIONAL STANDARD 15000</small>	
FMD: 16		Plan Period: Jan 1, 2002 - Dec 31, 2006			
Operating Area: Hinds Lake		Inventory Map #: 060-13,14 072-24,34,43,44			
Harvest Area #: K16-06		NTS Map #: 12 H 03 12 A 14			
Forest Inventory					
Gross		Net		Working Group	
Volume:	206,011 m3	Volume:	150,800 m3	bF:	56 %
Area:	1766 ha	Area:	1766 ha	bS:	44 %
Operational Considerations:					
Harvest System:		Mechanical , Conventional and Cable Systems			
Terrain Conditions:		Hilly and Flat terrain, moderate to deep topsoil over mineral soil The merchantable forest is broken by bog and scrub areas.			
Other Considerations:					
Wildlife -		Pine Marten habitat study, regular meetings with DFRA to review annual operating plans.			
Water -		Regulatory 20 meter buffers, 100 meter buffers on main stem of salmon rivers, 30 meter no grub zones, guidelines for working inside protected watersheds.			
Outfitters-		Harvest and road construction scheduling to avoid conflicts, all outfitting locations plotted on CBPP harvest maps for planning purposes.			
Ecotourism -		Meetings with snowmobile tour operators. Public access to all company built roads.			
Sawmills-		Sawlog exchange agreement will continue. Commercial and domestic hardwood permits available for CBPP limits.			
Recreation -		Public access to all company built roads, regular meetings with local snowmobile clubs. Approval process for cottage development on CBPP limits.			
Mining -		Approval process to allow mining and quarry activities on CBPP limits.			

