
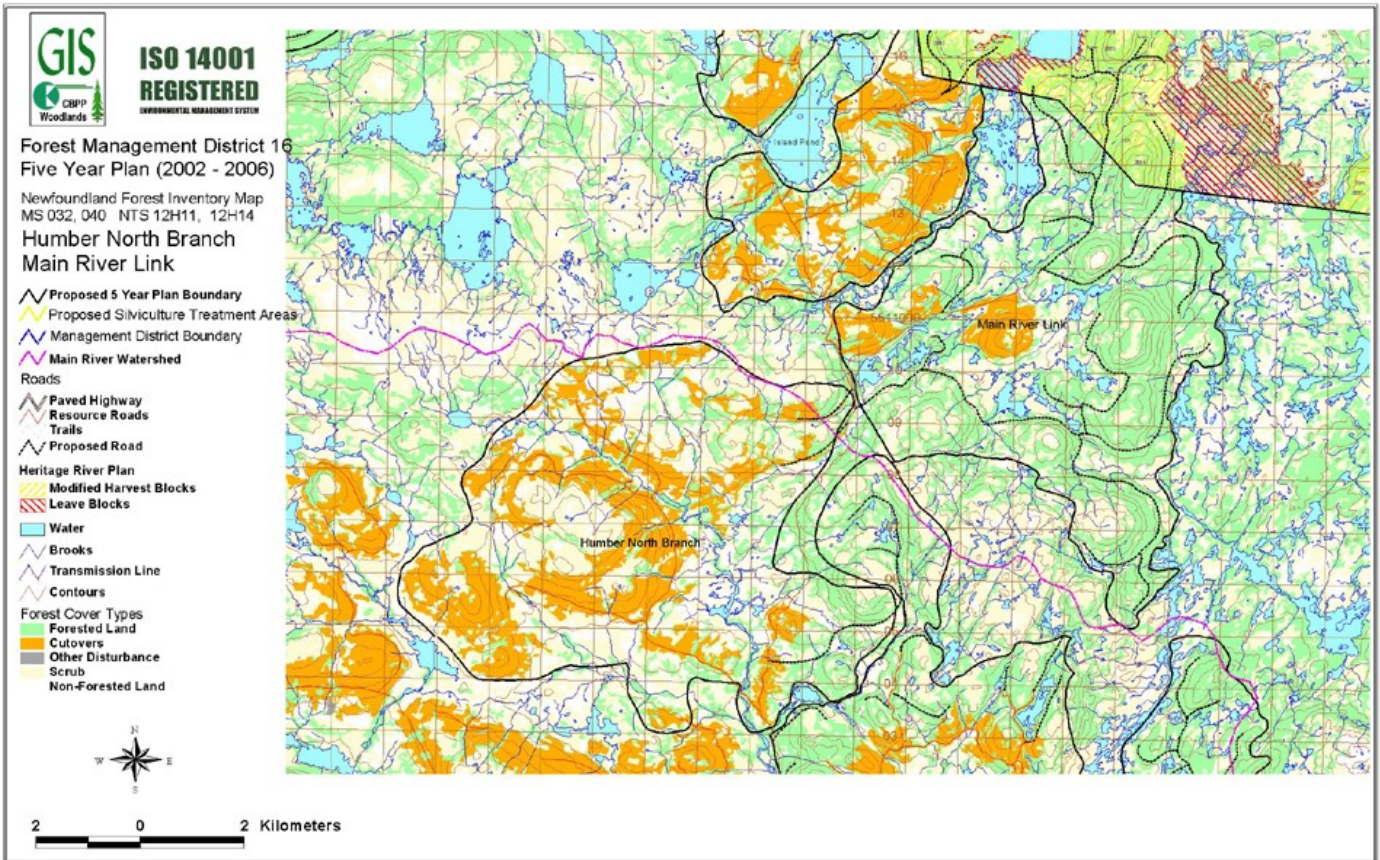



		<b>CORNER BROOK PULP &amp; PAPER LIMITED</b> <b>FIVE YEAR OPERATING PLAN</b>		<b>ISO 14001</b> <b>REGISTERED</b> <small>ENVIRONMENTAL MANAGEMENT SYSTEM</small>	
		<b>FMD:</b> 16		<b>Plan Period:</b> Jan 1, 2002 - Dec 31, 2006	
<b>Operating Area:</b> Humber N. Branch		<b>Inventory Map #:</b> 040-32,41,42			
<b>Harvest Area #:</b> K16-02a		<b>NTS Map #:</b> 12 H 11			
<b>Forest Inventory</b>					
<b>Gross</b>		<b>Net</b>		<b>Working Group</b>	
Volume:	25,527 m3	Volume:	18,685 m3	bF:	65 %
Area:	208 ha	Area:	692 ha	bS:	35 %
<b>Operational Considerations:</b>					
Harvest System:	Mechanical, Conventional and Cable Systems				
Terrain Conditions:	Rolling terrain with shallow topsoil over mineral soil and bedrock.				
	The merchantable forest is broken by bog and scrub areas.				
<b>Other Considerations:</b>					
Wildlife -	Pine Marten habitat study, connectivity working group with Gross Morne National Park, regular meetings with DFRA to review annual operating plans.				
Water -	Regulatory 20 meter buffers, 100 meter buffers on main stem of salmon rivers, 30 meter no grub zones, guidelines for working inside protected watersheds.				
Outfitters-	Harvest and road construction scheduling to avoid conflicts, all outfitting locations plotted on CBPP harvest maps for planning purposes.				
Ecotourism-	Meetings with snowmobile tour operators. Public access to all company built roads.				
Sawmills-	Sawlog exchange agreement will continue.				
	Commercial and domestic hardwood permits available for CBPP limits.				
Recreation -	Public access to all company built roads, regular meetings with local snowmobile clubs. Approval process for cottage development on CBPP limits.				
Mining -	Approval process to allow mining and quarry activities on CBPP limits.				


		<b>CORNER BROOK PULP &amp; PAPER LIMITED</b> <b>FIVE YEAR OPERATING PLAN</b>			<b>ISO 14001</b> <b>REGISTERED</b> <small>INTERNATIONAL STANDARD 15000</small>	
		<b>FMD:</b> 16		<b>Plan Period:</b> Jan 1, 2002 - Dec 31, 2006		
<b>Operating Area:</b> Main River Link		<b>Inventory Map #:</b> 032-12,13, 040-42,43				
<b>Harvest Area #:</b> K16-15		<b>NTS Map #:</b> 12 H 14, 11				
<b>Forest Inventory</b>						
<b>Gross</b>		<b>Net</b>		<b>Working Group</b>		
Volume:	228,055 m <sup>3</sup>	Volume:	83,468 m <sup>3</sup>	bF:	75 %	
Area:	1782 ha	Area:	1782 ha	bS:	25 %	
<b>Operational Considerations:</b>						
Harvest System:	Selective Harvest, Mechanical , Conventional and Cable Systems					
Terrain Conditions:	Rolling terrain with shallow top soil over mineral soil and bedrock.					
	The merchantable forest is broken by bog and scrub areas.					
<b>Other Considerations:</b>						
Wildlife -	Pine Marten study, connectivity working group with Gross Morne National Park, regular meetings with DFRA to review annual operating plans.					
Water -	Regulatory 20 meter buffers, 100 meter buffers on main stem of salmon rivers, 30 meter no grub zones, guidelines for working inside protected watersheds.					
Outfitters-	Harvest schedules, selective harvest plan, road locations, landscape design.					
Ecotourism -	Main River Heritage River Plan, selective harvest plan.					
Sawmills-	Sawlog exchange agreement will continue.					
Recreation -	Public access to all company built roads, Main River Heritage Plan, regular meetings with local snowmobile clubs.					
Mining -	Approval process to allow mining and quarry activities on CBPP limits.					

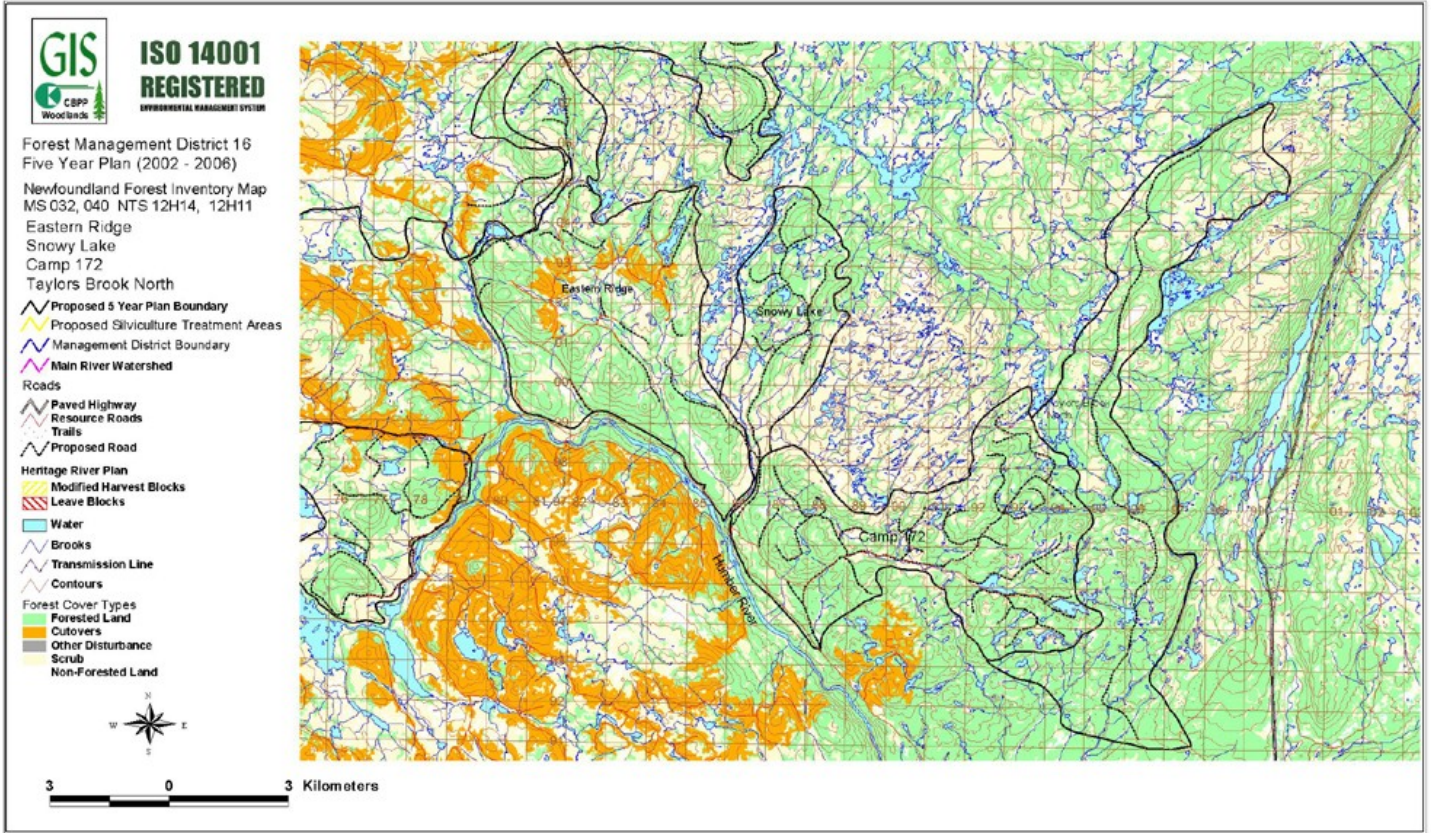


		<b>CORNER BROOK PULP &amp; PAPER LIMITED</b> <b>FIVE YEAR OPERATING PLAN</b>		<b>ISO 14001</b> <b>REGISTERED</b> <small>ENVIRONMENTAL MANAGEMENT SYSTEM</small>	
		<b>FMD:</b> 16		<b>Plan Period:</b> Jan 1, 2002 - Dec 31, 2006	
<b>Operating Area:</b> Eastern Ridge		<b>Inventory Map #:</b> 040-32,33,42,43			
<b>Harvest Area #:</b> K16-02b		<b>NTS Map #:</b> 12 H 11			
<b>Forest Inventory</b>					
<b>Gross</b>		<b>Net</b>		<b>Working Group</b>	
Volume:	179,850 m3	Volume:	131,650 m3	bF:	73 %
Area:	1493 ha	Area:	1493 ha	bS:	27 %
<b>Operational Considerations:</b>					
Harvest System:	Mechanical, Conventional and Cable Systems				
Terrain Conditions:	Hilly terrain with steep slopes, shallow topsoil over mineral soil The merchantable forest is broken by bog and scrub areas.				
<b>Other Considerations:</b>					
Wildlife -	Pine Marten habitat study, connectivity working group with Gross Morne National Park, regular meetings with DFRA to review annual operating plans.				
Water -	Regulatory 20 meter buffers, 100 meter buffers on main stem of salmon rivers, 30 meter no grub zones, guidelines for working inside protected watersheds.				
Outfitters-	Harvest and road construction scheduling to avoid conflicts, all outfitting locations plotted on CBPP harvest maps for planning purposes.				
Ecotourism-	Meetings with snowmobile tour operators. Public access to all company built roads.				
Sawmills-	Sawlog exchange agreement will continue. Commercial and domestic hardwood permits available for CBPP limits.				
Recreation -	Public access to all company built roads, regular meetings with local snowmobile clubs. Approval process for cottage development on CBPP limits.				
Mining -	Approval process to allow mining and quarry activities on CBPP limits.				


		<b>CORNER BROOK PULP &amp; PAPER LIMITED</b> <b>FIVE YEAR OPERATING PLAN</b>		<b>ISO 14001</b> <b>REGISTERED</b> <small>ENVIRONMENTAL MANAGEMENT SYSTEM</small>	
		<b>FMD:</b> 16		<b>Plan Period:</b> Jan 1, 2002 - Dec 31, 2006	
<b>Operating Area:</b> Snowy Lake		<b>Inventory Map #:</b> 040-33,43			
<b>Harvest Area #:</b> K16-29		<b>NTS Map #:</b> 12 H 11			
<b>Forest Inventory</b>					
<b>Gross</b>		<b>Net</b>		<b>Working Group</b>	
Volume:	68,583 m <sup>3</sup>	Volume:	50,203 m <sup>3</sup>	bF:	73 %
Area:	548 ha	Area:	548 ha	bS:	27 %
<b>Operational Considerations:</b>					
Harvest System:	Mechanical, Conventional and Cable Systems				
Terrain Conditions:	Hilly terrain with steep slopes, shallow topsoil over mineral soil The merchantable forest is broken by bog and scrub areas.				
<b>Other Considerations:</b>					
Wildlife -	Pine Marten habitat study, connectivity working group with Gross Morne National Park, regular meetings with DFRA to review annual operating plans.				
Water -	Regulatory 20 meter buffers, 100 meter buffers on main stem of salmon rivers, 30 meter no grub zones, guidelines for working inside protected watersheds.				
Outfitters-	Harvest and road construction scheduling to avoid conflicts, all outfitting locations plotted on CBPP harvest maps for planning purposes.				
Ecotourism-	Meetings with snowmobile tour operators. Public access to all company built roads.				
Sawmills-	Sawlog exchange agreement will continue. Commercial and domestic hardwood permits available for CBPP limits.				
Recreation -	Public access to all company built roads, regular meetings with local snowmobile clubs. Approval process for cottage development on CBPP limits.				
Mining -	Approval process to allow mining and quarry activities on CBPP limits.				

		<b>CORNER BROOK PULP &amp; PAPER LIMITED</b> <b>FIVE YEAR OPERATING PLAN</b>		<b>ISO 14001</b> <b>REGISTERED</b> <small>ENVIRONMENTAL MANAGEMENT SYSTEM</small>	
		<b>FMD:</b> 16		<b>Plan Period:</b> Jan 1, 2002 - Dec 31, 2006	
<b>Operating Area:</b> Camp 172		<b>Inventory Map #:</b> 040-23,24,33,34			
<b>Harvest Area #:</b> K16-27		<b>NTS Map #:</b> 12 H 11			
<b>Forest Inventory</b>					
<b>Gross</b>		<b>Net</b>		<b>Working Group</b>	
Volume:	163,124 m3	Volume:	119,406 m3	bF:	69 %
Area:	1365 ha	Area:	1365 ha	bS:	31 %
<b>Operational Considerations:</b>					
Harvest System:	Mechanical, Conventional and Cable Systems				
Terrain Conditions:	Hilly terrain with steep slopes, shallow topsoil over mineral soil The merchantable forest is broken by bog and scrub areas.				
<b>Other Considerations:</b>					
Wildlife -	Pine Marten habitat study, connectivity working group with Gross Morne National Park, regular meetings with DFRA to review annual operating plans.				
Water -	Regulatory 20 meter buffers, 100 meter buffers on main stem of salmon rivers, 30 meter no grub zones, guidelines for working inside protected watersheds.				
Outfitters-	Harvest and road construction scheduling to avoid conflicts, all outfitting locations plotted on CBPP harvest maps for planning purposes.				
Ecotourism-	Meetings with snowmobile tour operators. Public access to all company built roads.				
Sawmills-	Sawlog exchange agreement will continue. Commercial and domestic hardwood permits available for CBPP limits.				
Recreation -	Public access to all company built roads, regular meetings with local snowmobile clubs. Approval process for cottage development on CBPP limits.				
Mining -	Approval process to allow mining and quarry activities on CBPP limits.				

		<b>CORNER BROOK PULP &amp; PAPER LIMITED</b> <b>FIVE YEAR OPERATING PLAN</b>		<b>ISO 14001</b> <b>REGISTERED</b> <small>INTERNATIONAL STANDARD 15000</small>	
		<b>FMD:</b> 16		<b>Plan Period:</b> Jan 1, 2002 - Dec 31, 2006	
<b>Operating Area:</b> Taylors Bk. North		<b>Inventory Map #:</b> 040-24,34,44			
<b>Harvest Area #:</b> K16-28		<b>NTS Map #:</b> 12 H 11			
<b>Forest Inventory</b>					
<b>Gross</b>		<b>Net</b>		<b>Working Group</b>	
Volume:	81,387 m3	Volume:	40,954 m3	bF:	74 %
Area:	692 ha	Area:	692 ha	bS:	26 %
<b>Operational Considerations:</b>					
Harvest System:	Selective Harvest, Mechanical , Conventional and Cable Systems				
Terrain Conditions:	Rolling terrain with shallow top soil over mineral soil and bedrock. The merchantable forest is broken by bog and scrub areas.				
<b>Other Considerations:</b>					
Wildlife -	Pine Marten study, connectivity working group with Gross Morne National Park, regular meetings with DFRA to review annual operating plans.				
Water -	Regulatory 20 meter buffers, 100 meter buffers on main stem of salmon rivers, 30 meter no grub zones, guidelines for working inside protected watersheds.				
Outfitters-	Harvest schedules, selective harvest plan, road locations.				
Ecotourism -	Main River Heritage River Plan, selective harvest plan. Meetings with local development associations.				
Sawmills-	Sawlog exchange agreement will continue. Commercial and domestic hardwood permits available for CBPP limits.				
Recreation -	Public access to all company built roads, Main River Heritage Plan, regular meetings with local snowmobile clubs. Approval process for cottage development on CBPP limits.				
Mining -	Approval process to allow mining and quarry activities on CBPP limits.				





		<b>CORNER BROOK PULP &amp; PAPER LIMITED</b> <b>FIVE YEAR OPERATING PLAN</b>		<b>ISO 14001</b> <b>REGISTERED</b> <small>ENVIRONMENTAL MANAGEMENT SYSTEM</small>	
		<b>FMD:</b> 16		<b>Plan Period:</b> Jan 1, 2002 - Dec 31, 2006	
<b>Operating Area:</b> Silver Mtn. Pond		<b>Inventory Map #:</b> 040-22,32			
<b>Harvest Area #:</b> K16-25		<b>NTS Map #:</b> 12 H 11			
<b>Forest Inventory</b>					
<b>Gross</b>		<b>Net</b>		<b>Working Group</b>	
Volume:	61,932 m <sup>3</sup>	Volume:	45,334 m <sup>3</sup>	bF:	71 %
Area:	557 ha	Area:	557 ha	bS:	29 %
<b>Operational Considerations:</b>					
Harvest System:	Mechanical, Conventional and Cable Systems				
Terrain Conditions:	Hilly terrain with steep slopes, shallow topsoil over mineral soil The merchantable forest is broken by bog and scrub areas.				
<b>Other Considerations:</b>					
Wildlife -	Pine Marten habitat study, connectivity working group with Gross Morne National Park, regular meetings with DFRA to review annual operating plans.				
Water -	Regulatory 20 meter buffers, 100 meter buffers on main stem of salmon rivers, 30 meter no grub zones, guidelines for working inside protected watersheds.				
Outfitters-	Harvest and road construction scheduling to avoid conflicts, all outfitting locations plotted on CBPP harvest maps for planning purposes.				
Ecotourism -	Meetings with snowmobile tour operators. Public access to all company built roads.				
Sawmills-	Sawlog exchange agreement will continue. Commercial and domestic hardwood permits available for CBPP limits.				
Recreation -	Public access to all company built roads, regular meetings with local snowmobile clubs. Approval process for cottage development on CBPP limits.				
Mining -	Approval process to allow mining and quarry activities on CBPP limits.				

