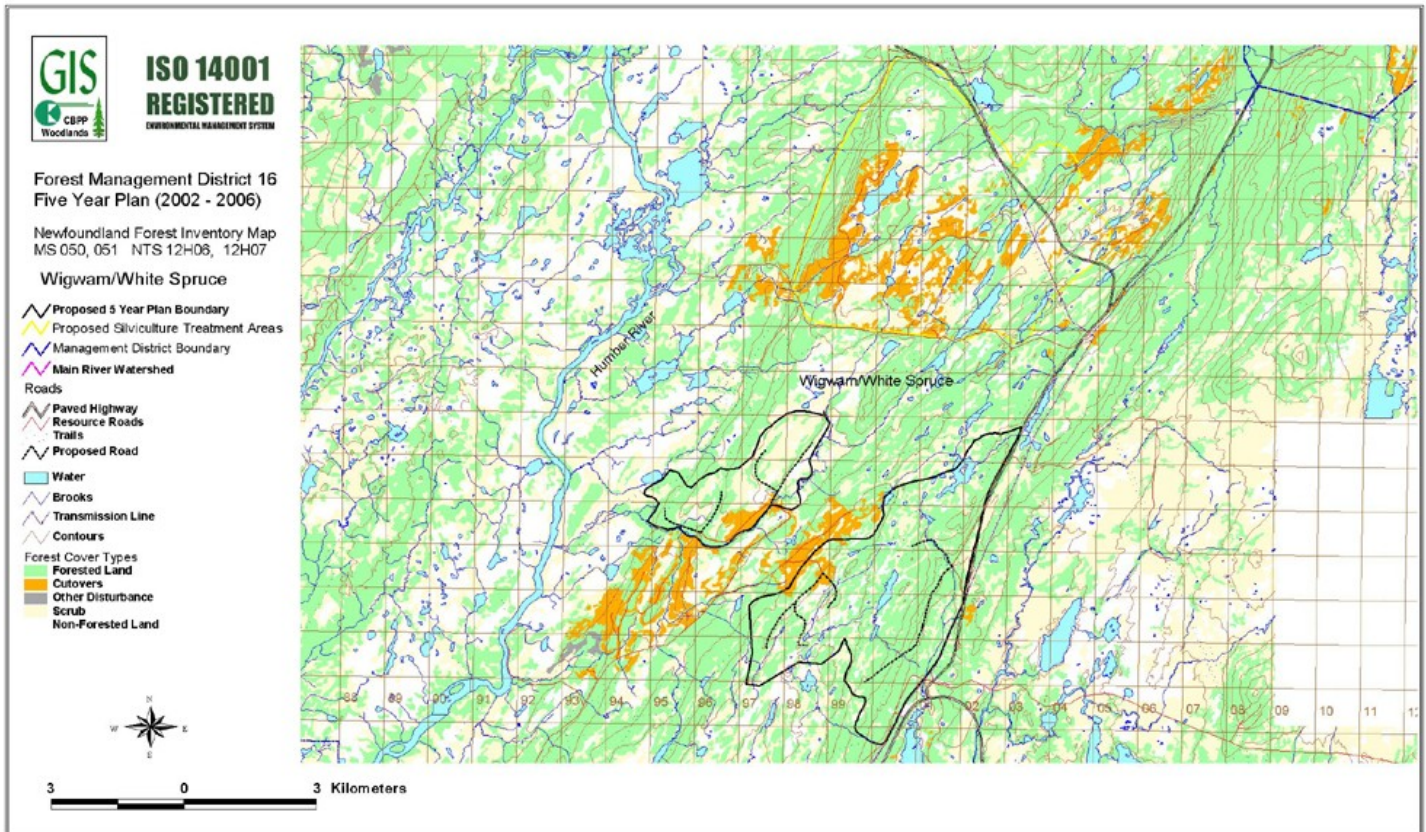


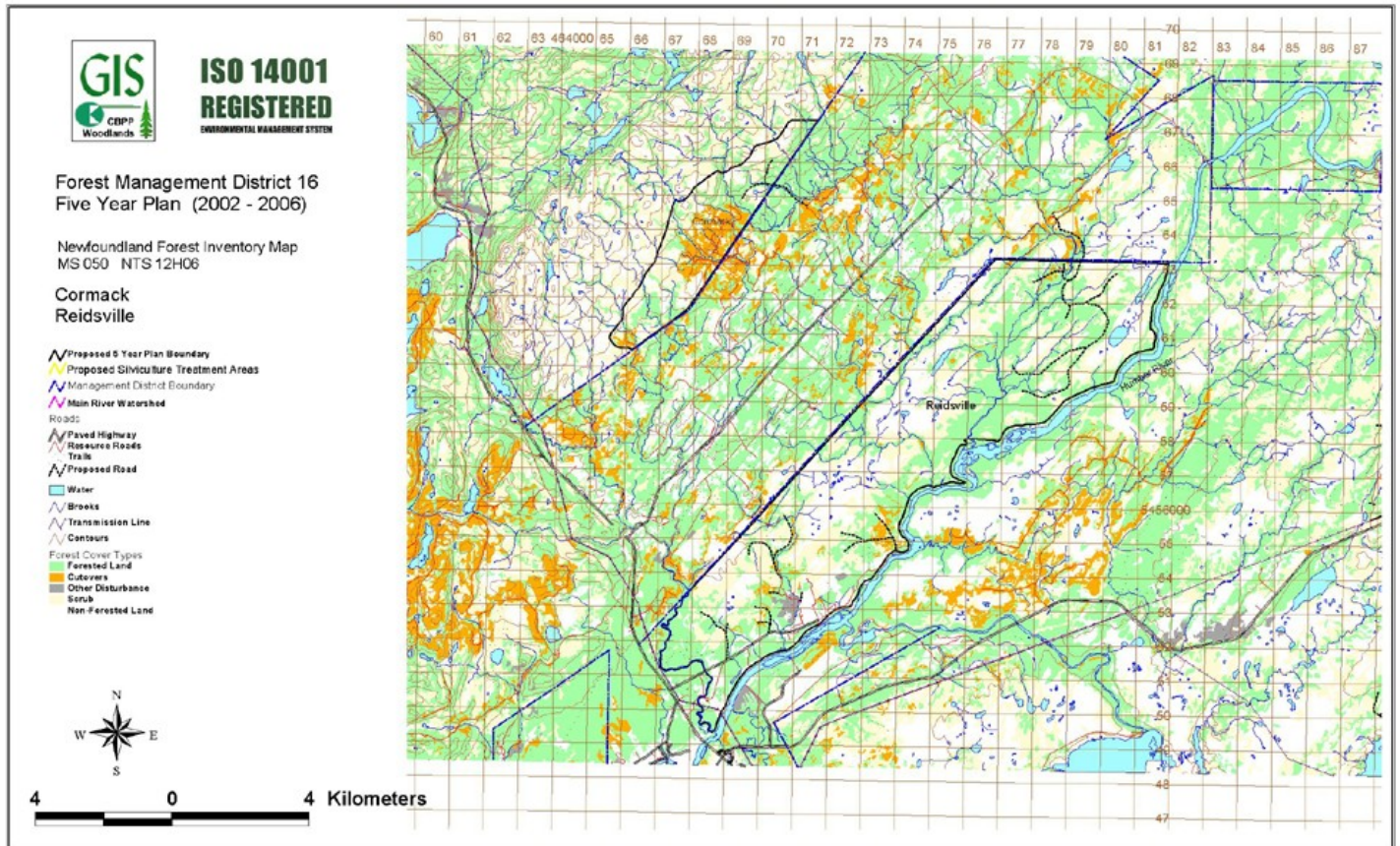

		CORNER BROOK PULP & PAPER LIMITED FIVE YEAR OPERATING PLAN		ISO 14001 REGISTERED <small>ENVIRONMENTAL MANAGEMENT SYSTEM</small>	
FMD: 16		Plan Period: Jan 1, 2002 - Dec 31, 2006			
Operating Area: Wigwam/White Sp.		Inventory Map #: 050-24,34, 051-21,31			
Harvest Area #: K16-14		NTS Map #: 12 H 06,09			
Forest Inventory					
Gross		Net		Working Group	
Volume:	46,309 m3	Volume:	33,898 m3	bF:	68 %
Area:	369 ha	Area:	369 ha	bS:	32 %
Operational Considerations:					
Harvest System:		Mechanical, Conventional and Cable Systems			
Terrain Conditions:		Flat and Hilly terrain with steep slopes, deep topsoil over mineral soil			
		The merchantable forest is broken by bog and scrub areas.			
Other Considerations:					
Wildlife -		Pine Marten habitat study, regular meetings with DFRA to review annual operating plans.			
Water -		Regulatory 20 meter buffers, 100 meter buffers on main stem of salmon rivers, 30 meter no grub zones, guidelines for working inside protected watersheds.			
Outfitters-		Harvest and road construction scheduling to avoid conflicts, all outfitting locations plotted on CBPP harvest maps for planning purposes.			
Ecotourism -		Meetings with snowmobile tour operators. Public access to all company built roads.			
Sawmills-		Sawlog exchange agreement will continue.			
		Commercial and domestic hardwood permits available for CBPP limits.			
Recreation -		Public access to all company built roads, regular meetings with local snowmobile clubs. Approval process for cottage development on CBPP limits.			
Mining -		Approval process to allow mining and quarry activities on CBPP limits.			





		CORNER BROOK PULP & PAPER LIMITED		ISO 14001	
		FIVE YEAR OPERATING PLAN		REGISTERED	
FMD: 16		Plan Period: Jan 1, 2002 - Dec 31, 2006			
Operating Area: Cormack		Inventory Map #: 050-11,21			
Harvest Area #: K16-07		NTS Map #: 12 H 06			
Forest Inventory					
Gross		Net		Working Group	
Volume:	10,806 m3	Volume:	7,910 m3	bF:	75 %
Area:	100 ha	Area:	100 ha	bS:	25 %
Operational Considerations:					
Harvest System:		Mechanical, Conventional and Cable Systems			
Terrain Conditions:		Hilly terrain, steep slopes, shallow topsoil over mineral soil			
		The merchantable forest is broken by bog and scrub areas.			
Other Considerations:					
Wildlife -		Pine Marten habitat study, regular meetings with DFRA to review annual operating plans.			
Water -		Regulatory 20 meter buffers, 100 meter buffers on main stem of salmon rivers, 30 meter no grub zones, guidelines for working inside protected watersheds.			
Outfitters-		Harvest and road construction scheduling to avoid conflicts, all outfitting locations plotted on CBPP harvest maps for planning purposes.			
Ecotourism -		Meetings with snowmobile tour operators. Public access to all company built roads.			
Sawmills-		Sawlog exchange agreement will continue.			
		Commercial and domestic hardwood permits available for CBPP limits.			
		Meeting with community counsel to address local operators concerns.			
Recreation -		Public access to all company built roads, regular meetings with local snowmobile clubs. Approval process for cottage development on CBPP limits.			
Mining -		Approval process to allow mining and quarry activities on CBPP limits.			


		CORNER BROOK PULP & PAPER LIMITED FIVE YEAR OPERATING PLAN		ISO 14001 REGISTERED <small>ENVIRONMENTAL MANAGEMENT SYSTEM</small>	
FMD:		16		Plan Period: Jan 1, 2002 - Dec 31, 2006	
Operating Area:		Reidsville		Inventory Map #: 050-11,12,22 060-41,42	
Harvest Area #:		K16-24		NTS Map #: 12 H 06	
Forest Inventory					
Gross		Net		Working Group	
Volume:	76,301 m3	Volume:	55,852 m3	bF:	35 %
Area:	675 ha	Area:	675 ha	bS:	65 %
Operational Considerations:					
Harvest System:		Mechanical , Conventional and Cable Systems			
Terrain Conditions:		Flat terrain, moderate to deep topsoil over mineral soil			
		The merchantable forest is broken by bog and scrub areas.			
Other Considerations:					
Wildlife -	Pine Marten habitat study, regular meetings with DFRA to review annual operating plans.				
Water -	Regulatory 20 meter buffers, 100 meter buffers on main stem of salmon rivers, 30 meter no grub zones, guidelines for working inside protected watersheds.				
Outfitters-	Harvest and road construction scheduling to avoid conflicts, all outfitting locations plotted on CBPP harvest maps for planning purposes.				
Ecotourism -	Meetings with snowmobile tour operators. Public access to all company built roads.				
Sawmills-	Sawlog exchange agreement will continue.				
	Commercial and domestic hardwood permits available for CBPP limits.				
	Meeting with community counsel to address local operators concerns.				
Recreation -	Public access to all company built roads, regular meetings with local snowmobile clubs. Approval process for cottage development on CBPP limits.				
Agriculture-	An agreement to use West Branch brook as the western boundry for this block.				
Mining -	Approval process to allow mining and quarry activities on CBPP limits.				



		CORNER BROOK PULP & PAPER LIMITED FIVE YEAR OPERATING PLAN		ISO 14001 REGISTERED <small>ENVIRONMENTAL MANAGEMENT SYSTEM</small>	
FMD: 16		Plan Period: Jan 1, 2002 - Dec 31, 2006			
Operating Area: Junction Brook		Inventory Map #: 050-13,14 060-42,43			
Harvest Area #: K16-13		NTS Map #: 12 H 06,03			
Forest Inventory					
Gross		Net		Working Group	
Volume:	60,899 m3	Volume:	44,578 m3	bF:	28 %
Area:	484 ha	Area:	484 ha	bS:	72 %
Operational Considerations:					
Harvest System:		Mechanical, Conventional and Cable Systems			
Terrain Conditions:		Flat terrain, moderate to deep topsoil over mineral soil			
		The merchantable forest is broken by bog and scrub areas.			
Other Considerations:					
Wildlife -		Pine Marten habitat study, regular meetings with DFRA to review annual operating plans.			
Water -		Regulatory 20 meter buffers, 100 meter buffers on main stem of salmon rivers, 30 meter no grub zones, guidelines for working inside protected watersheds.			
Outfitters-		Harvest and road construction scheduling to avoid conflicts, all outfitting locations plotted on CBPP harvest maps for planning purposes.			
Ecotourism -		Meetings with snowmobile tour operators. Public access to all company built roads.			
Sawmills-		Sawlog exchange agreement will continue.			
		Commercial and domestic hardwood permits available for CBPP limits.			
Recreation -		Public access to all company built roads, regular meetings with local snowmobile clubs. Approval process for cottage development on CBPP limits.			
Mining -		Approval process to allow mining and quarry activities on CBPP limits.			

		CORNER BROOK PULP & PAPER LIMITED FIVE YEAR OPERATING PLAN		ISO 14001 REGISTERED <small>ENVIRONMENTAL MANAGEMENT SYSTEM</small>	
FMD: 16		Plan Period: Jan 1, 2002 - Dec 31, 2006			
Operating Area: Mary Ann Brook		Inventory Map #: 060-43			
Harvest Area #: K16-13b		NTS Map #: 12 H 03			
Forest Inventory					
Gross		Net		Working Group	
Volume:	18,544 m ³	Volume:	13,574 m ³	bF:	26 %
Area:	155 ha	Area:	155 ha	bS:	74 %
Operational Considerations:					
Harvest System:		Mechanical, Conventional and Cable Systems			
Terrain Conditions:		Flat terrain, moderate to deep topsoil over mineral soil			
		The merchantable forest is broken by bog and scrub areas.			
Other Considerations:					
Wildlife - Pine Marten habitat study, regular meetings with DFRA to review annual operating plans.					
Water - Regulatory 20 meter buffers, 100 meter buffers on main stem of salmon rivers, 30 meter no grub zones, guidelines for working inside protected watersheds.					
Outfitters- Harvest and road construction scheduling to avoid conflicts, all outfitting locations plotted on CBPP harvest maps for planning purposes.					
Ecotourism - Meetings with snowmobile tour operators. Public access to all company built roads.					
Sawmills- Sawlog exchange agreement will continue.					
Commercial and domestic hardwood permits available for CBPP limits.					
Recreation - Public access to all company built roads, regular meetings with local snowmobile clubs. Approval process for cottage development on CBPP limits.					
Mining - Approval process to allow mining and quarry activities on CBPP limits.					

		CORNER BROOK PULP & PAPER LIMITED FIVE YEAR OPERATING PLAN		ISO 14001 REGISTERED <small>ENVIRONMENTAL MANAGEMENT SYSTEM</small>	
FMD: 16		Plan Period: Jan 1, 2002 - Dec 31, 2006			
Operating Area: Canoe Pond		Inventory Map #: 050-13,14			
Harvest Area #: K16-13a		NTS Map #: 12 H 06			
Forest Inventory					
Gross		Net		Working Group	
Volume:	25,596 m3	Volume:	18,736 m3	bF:	38 %
Area:	225 ha	Area:	225 ha	bS:	62 %
Operational Considerations:					
Harvest System:		Mechanical, Conventional and Cable Systems			
Terrain Conditions:		Flat terrain, moderate to deep topsoil over mineral soil			
		The merchantable forest is broken by bog and scrub areas.			
Other Considerations:					
Wildlife -		Pine Marten habitat study, regular meetings with DFRA to review annual operating plans.			
Water -		Regulatory 20 meter buffers, 100 meter buffers on main stem of salmon rivers, 30 meter no grub zones, guidelines for working inside protected watersheds.			
Outfitters-		Harvest and road construction scheduling to avoid conflicts, all outfitting locations plotted on CBPP harvest maps for planning purposes.			
Ecotourism -		Meetings with snowmobile tour operators. Public access to all company built roads.			
Sawmills-		Sawlog exchange agreement will continue.			
		Commercial and domestic hardwood permits available for CBPP limits.			
Recreation -		Public access to all company built roads, regular meetings with local snowmobile clubs. Approval process for cottage development on CBPP limits.			
Mining -		Approval process to allow mining and quarry activities on CBPP limits.			

		CORNER BROOK PULP & PAPER LIMITED FIVE YEAR OPERATING PLAN		ISO 14001 REGISTERED <small>ENVIRONMENTAL MANAGEMENT SYSTEM</small>	
FMD: 16		Plan Period: Jan 1, 2002 - Dec 31, 2006			
Operating Area: Boot Brook		Inventory Map #: 050-13,14 060-43,44			
Harvest Area #: K16-22		NTS Map #: 12 H 06,07			
Forest Inventory					
Gross		Net		Working Group	
Volume:	50,922 m3	Volume:	37,275 m3	bF:	29 %
Area:	424 ha	Area:	424 ha	bS:	71 %
Operational Considerations:					
Harvest System:		Mechanical, Conventional and Cable Systems			
Terrain Conditions:		Flat terrain, moderate to deep topsoil over mineral soil			
		The merchantable forest is broken by bog and scrub areas.			
Other Considerations:					
Wildlife -		Pine Marten habitat study, regular meetings with DFRA to review annual operating plans.			
Water -		Regulatory 20 meter buffers, 100 meter buffers on main stem of salmon rivers, 30 meter no grub zones, guidelines for working inside protected watersheds.			
Outfitters-		Harvest and road construction scheduling to avoid conflicts, all outfitting locations plotted on CBPP harvest maps for planning purposes.			
Ecotourism -		Meetings with snowmobile tour operators. Public access to all company built roads.			
Sawmills-		Sawlog exchange agreement will continue.			
		Commercial and domestic hardwood permits available for CBPP limits.			
Recreation -		Public access to all company built roads, regular meetings with local snowmobile clubs. Approval process for cottage development on CBPP limits.			
Mining -		Approval process to allow mining and quarry activities on CBPP limits.			

