

FMD 16 Five Year Plan Maps (2002 – 2006)

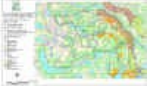
Cat Arm



[Operating Area Summary](#)

[Operating Area Map](#)

St. Paul's Big Pond



[Operating Area Summaries](#)

[Operating Area Map](#)

Main River North



[Operating Area Summaries](#)

[Operating Area Map](#)

Humber North Branch



[Operating Area Summaries](#)

[Operating Area Map](#)

Eastern Ridge



[Operating Area Summaries](#)

[Operating Area Map](#)

Silver Mountain Pond



[Operating Area Summary](#)

[Operating Area Map](#)

Wigwam/White Spruce



Cormack



[Operating Area Summary](#)

[Operating Area Map](#)

[Operating Area Summaries](#)

[Operating Area Map](#)

Junction Brook



[Operating Area Summaries](#)

[Operating Area Map](#)

East Sheffield



[Operating Area Summary](#)

[Operating Area Map](#)

Kittys Brook



[Operating Area Summary](#)

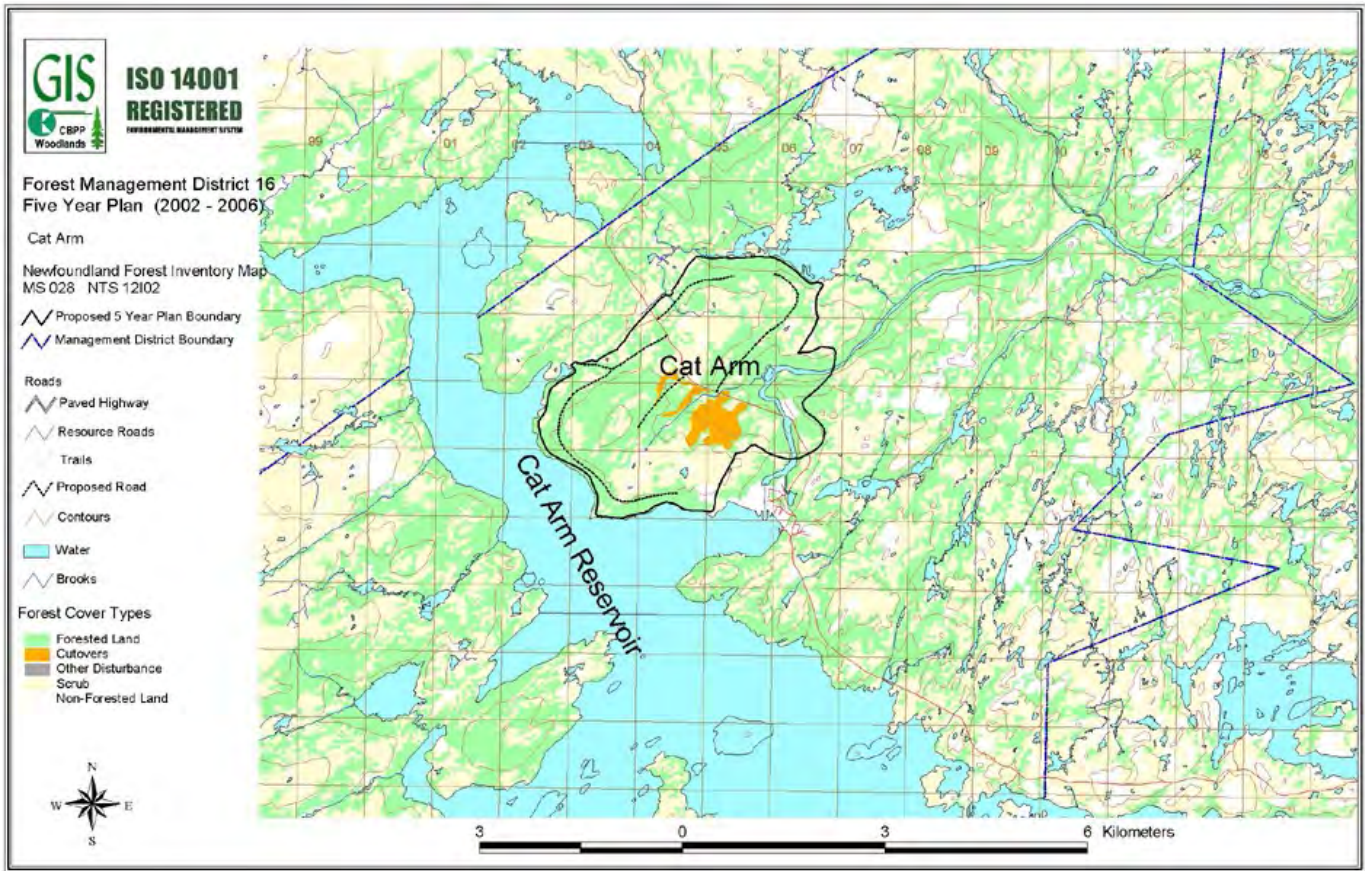
[Operating Area Map](#)


Hinds Lake





[Operating Area Summary](#)


[Operating Area Map](#)

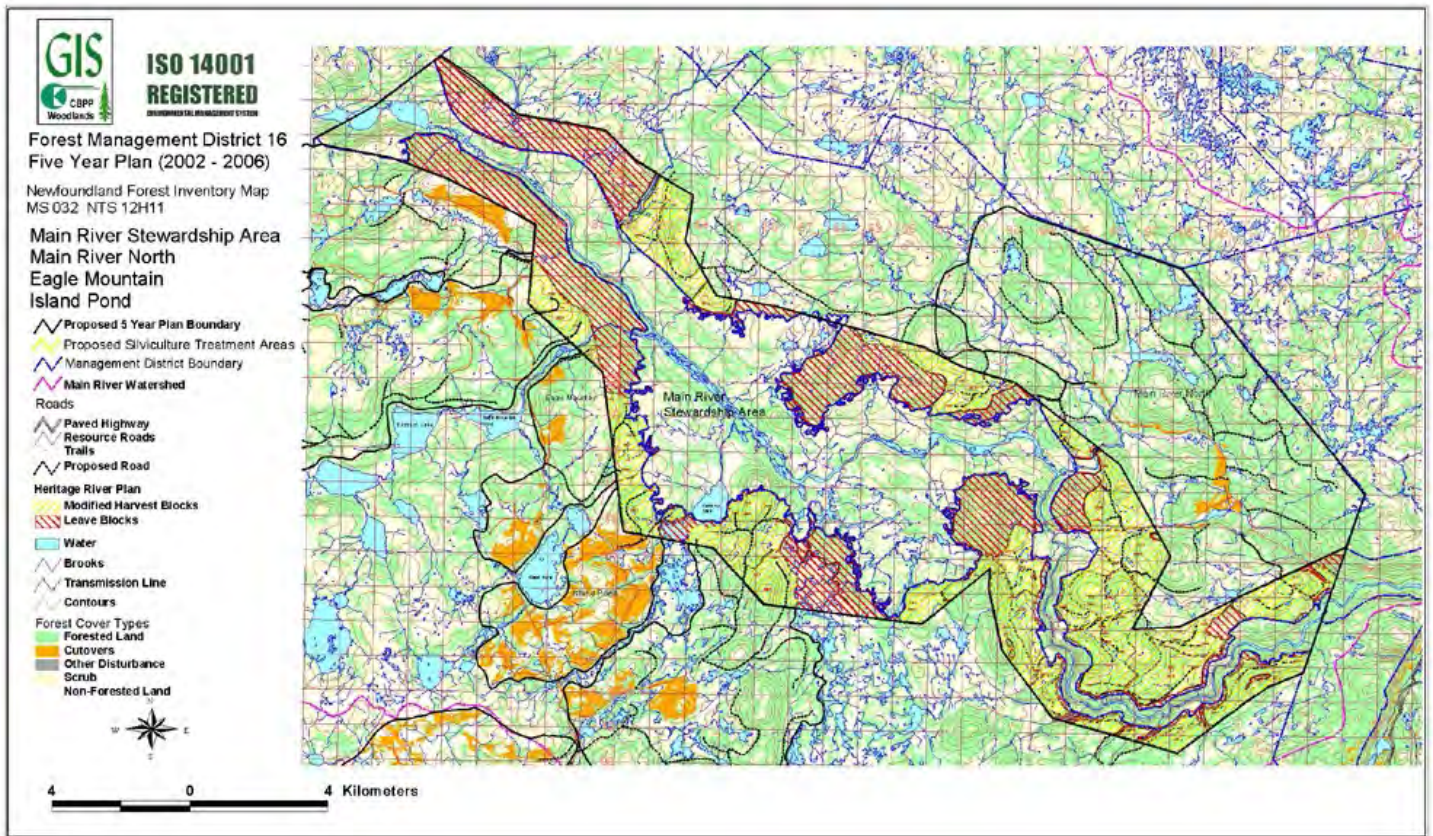



		CORNER BROOK PULP & PAPER LIMITED FIVE YEAR OPERATING PLAN			ISO 14001 REGISTERED <small>ENVIRONMENTAL MANAGEMENT SYSTEM</small>	
		FMD: 16		Plan Period: Jan 1, 2002 - Dec. 31 2006		
Operating Area: M.R. Stewardship		Inventory Map #: 032-12,13,14,22,23,24,32,33				
Harvest Area #: K16 - 32		NTS Map #: 12 H 14,15				
Forest Inventory						
Gross		Net		Working Group		
Volume:	373,676 m3	Volume:	136,765 m3	bF:	68 %	
Area:	3188 ha	Area:	3188 ha	bS:	32 %	
Operational Considerations:						
Harvest System:	Selective Harvest, Mechanical, Conventional, and Cable Systems.					
Terrain Conditions:	Rolling terrain, some steep slopes, shallow topsoil over mineral soil and rock. Merchantable forest broken by scrub and bog.					
Other Considerations:						
All other considerations are addressed in the Main River Heritage River Plan.						


		CORNER BROOK PULP & PAPER LIMITED FIVE YEAR OPERATING PLAN			ISO 14001 REGISTERED <small>ENVIRONMENTAL MANAGEMENT SYSTEM</small>	
		FMD: 16		Plan Period: Jan 1, 2002 - Dec 31, 2006		
Operating Area: Main River North		Inventory Map #: 032-14,21,24, 033-11				
Harvest Area #: K16-26		NTS Map #: 12 H 14,15				
Forest Inventory						
Gross		Net		Working Group		
Volume:	426,062 m3	Volume:	155,938 m3	bF:	71 %	
Area:	3600 ha	Area:	3600 ha	bS:	29 %	
Operational Considerations:						
Harvest System:	Selective Harvest, Mechanical , Conventional and Cable Systems					
Terrain Conditions:	Rolling terrain with shallow top soil over mineral soil and bedrock. The merchantable forest is broken by bog and scrub areas.					
Other Considerations:						
Wildlife -	Pine Marten study, connectivity working group with Gross Morne National Park, regular meetings with DFRA to review annual operating plans.					
Water -	Regulatory 20 meter buffers, 100 meter buffers on main stem of salmon rivers, 30 meter no grub zones, guidelines for working inside protected watersheds.					
Outfitters-	Harvest schedules, selective harvest plan, road locations.					
Ecotourism -	Main River Heritage River Plan, selective harvest plan.					
Sawmills-	Sawlog exchange agreement will continue.					
Recreation -	Public access to all company built roads, Main River Heritage Plan, regular meetings with local snowmobile clubs.					
Mining -	Approval process to allow mining and quarry activities on CBPP limits. Avoid blasting near a granite quarry by Leslie Lake.					

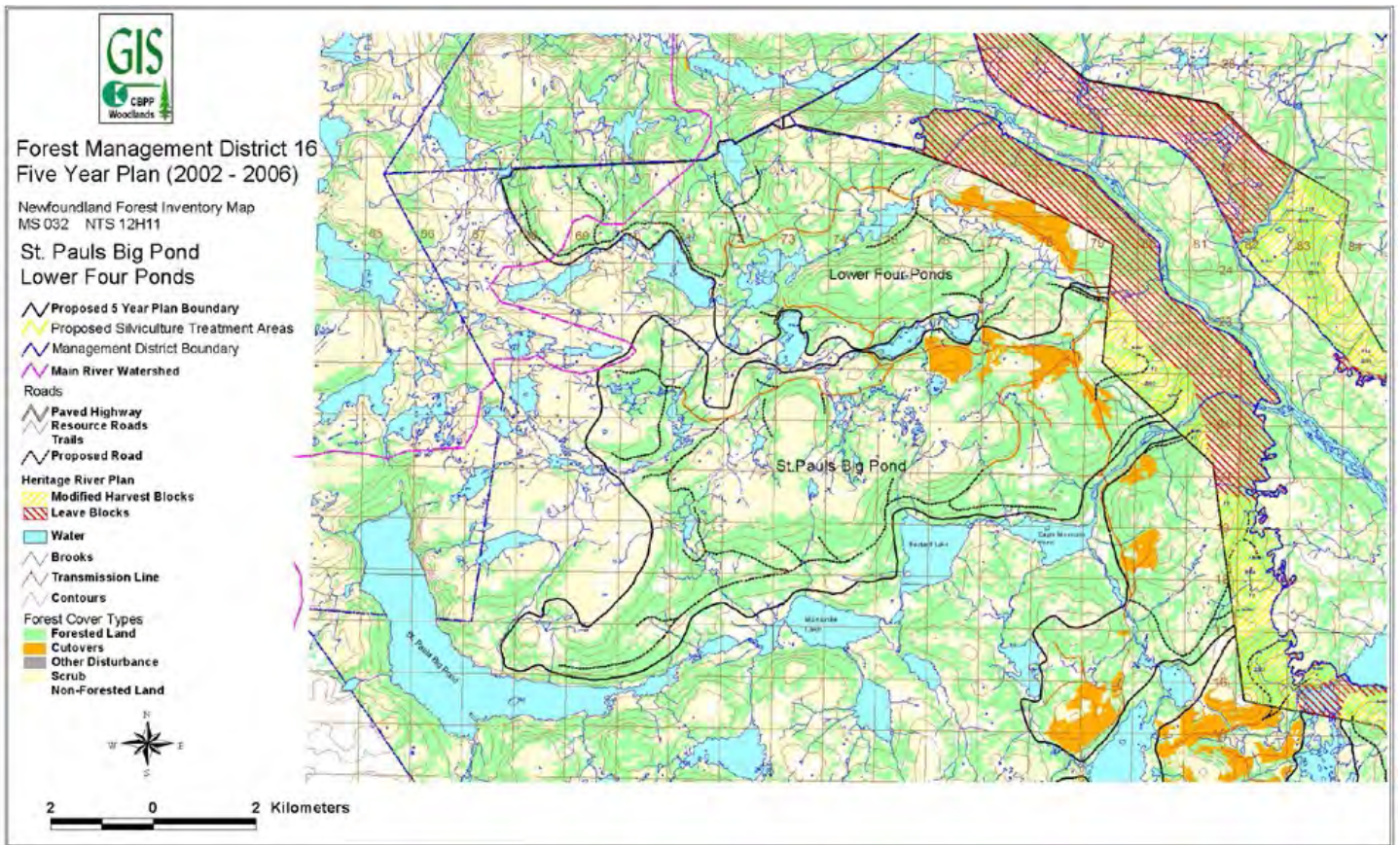
		CORNER BROOK PULP & PAPER LIMITED FIVE YEAR OPERATING PLAN		ISO 14001 REGISTERED <small>INTERNATIONAL STANDARD 15000</small>	
		FMD: 16		Plan Period: Jan 1, 2002 - Dec 31, 2006	
Operating Area: Eagle Mountain		Inventory Map #: 032-12,22			
Harvest Area #: K16-17		NTS Map #: 12 H 14			
Forest Inventory					
Gross		Net		Working Group	
Volume:	59,663 m3	Volume:	21,837 m3	bF:	75 %
Area:	537 ha	Area:	537 ha	bS:	25 %
Operational Considerations:					
Harvest System:	Selective Harvest, Mechanical , Conventional and Cable Systems				
Terrain Conditions:	Rolling terrain with shallow top soil over mineral soil and bedrock. The merchantable forest is broken by bog and scrub areas.				
Other Considerations:					
Wildlife -	Pine Marten study, connectivity working group with Gross Morne National Park, regular meetings with DFRA to review annual operating plans.				
Water -	Regulatory 20 meter buffers, 100 meter buffers on main stem of salmon rivers, 30 meter no grub zones, guidelines for working inside protected watersheds.				
Outfitters-	Harvest schedules, selective harvest plan, road locations, landscape design.				
Ecotourism -	Main River Heritage River Plan, selective harvest plan.				
Sawmills-	Sawlog exchange agreement will continue.				
Recreation -	Public access to all company built roads, Main River Heritage Plan, regular meetings with local snowmobile clubs.				
Mining -	Approval process to allow mining and quarry activities on CBPP limits.				


		CORNER BROOK PULP & PAPER LIMITED FIVE YEAR OPERATING PLAN			ISO 14001 REGISTERED <small>INTERNATIONAL STANDARD 15000</small>	
		FMD: 16		Plan Period: Jan 1, 2002 - Dec 31, 2006		
Operating Area: Island Pond		Inventory Map #: 032-12,13				
Harvest Area #: K16-16		NTS Map #: 12 H 14				
Forest Inventory						
Gross		Net		Working Group		
Volume:	30,079 m3	Volume:	11,009 m3	bF:	75 %	
Area:	254 ha	Area:	254 ha	bS:	25 %	
Operational Considerations:						
Harvest System:		Selective Harvest, Mechanical , Conventional and Cable Systems				
Terrain Conditions:		Rolling terrain with shallow top soil over mineral soil and bedrock. The merchantable forest is broken by bog and scrub areas.				
Other Considerations:						
Wildlife - Pine Marten study, connectivity working group with Gross Morne National Park, regular meetings with DFRA to review annual operating plans.						
Water - Regulatory 20 meter buffers, 100 meter buffers on main stem of salmon rivers, 30 meter no grub zones, guidelines for working inside protected watersheds.						
Outfitters - Harvest schedules, selective harvest plan, road locations, landscape design.						
Ecotourism - Main River Heritage River Plan, selective harvest plan.						
Sawmills - Sawlog exchange agreement will continue.						
Recreation - Public access to all company built roads, Main River Heritage Plan, regular meetings with local snowmobile clubs.						
Mining - Approval process to allow mining and quarry activities on CBPP limits.						




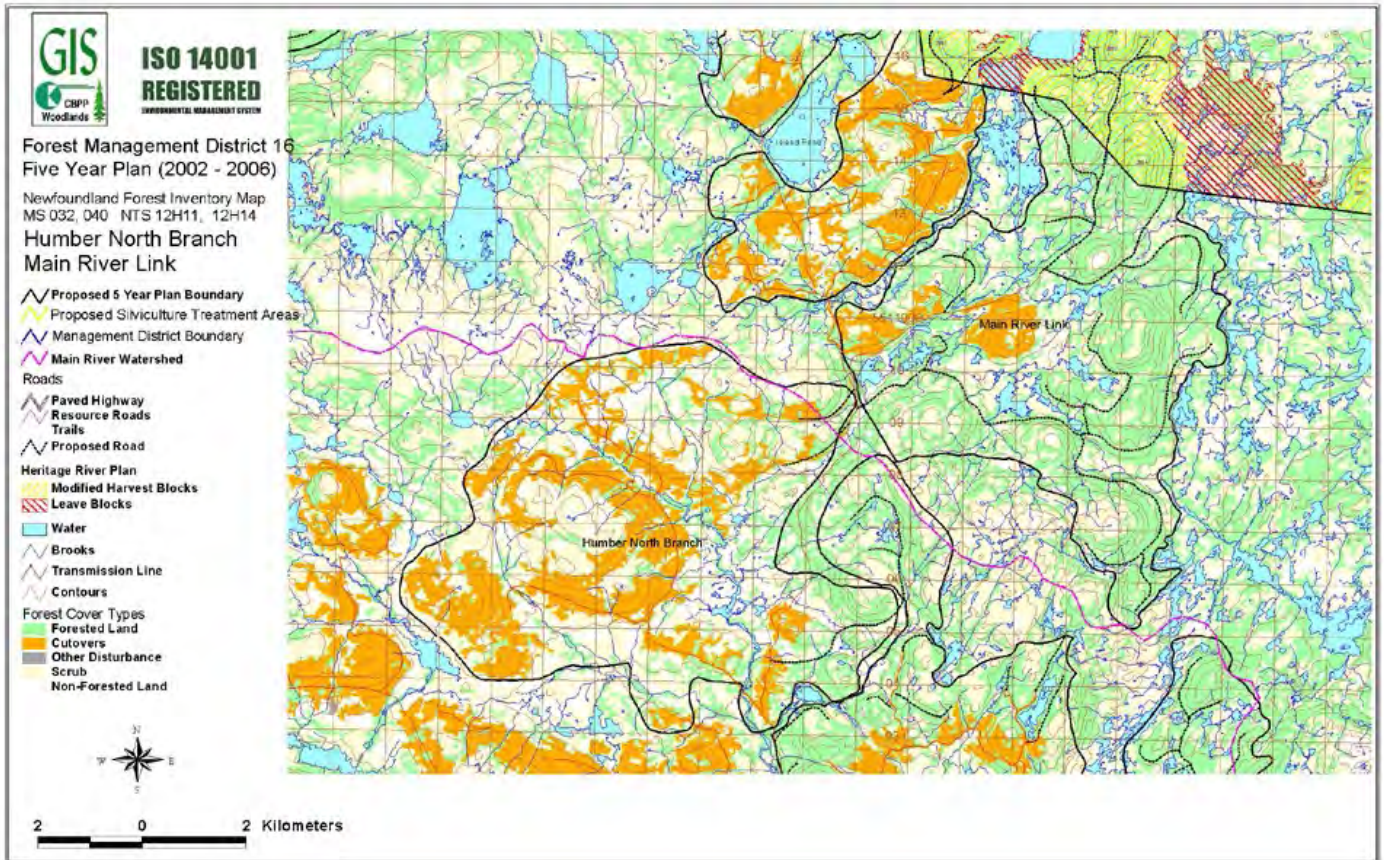
		CORNER BROOK PULP & PAPER LIMITED FIVE YEAR OPERATING PLAN			ISO 14001 REGISTERED <small>INTERNATIONAL STANDARD 15188</small>	
		FMD: 16		Plan Period: Jan 1, 2002 - Dec 31, 2006		
Operating Area: St Pauls Big Pond		Inventory Map #: 032-12,22,11,21				
Harvest Area #: K16-18		NTS Map #: 12 H 14				
Forest Inventory						
Gross		Net		Working Group		
Volume:	190,482 m ³	Volume:	69,716 m ³	bF:	77 %	
Area:	1815 ha	Area:	1815 ha	bS:	23 %	
Operational Considerations:						
Harvest System:		Selective Harvest, Mechanical , Conventional and Cable Systems				
Terrain Conditions:		Rolling terrain with shallow top soil over mineral soil and bedrock. The merchantable forest is broken by bog and scrub areas.				
Other Considerations:						
Wildlife -		Pine Marten study, connectivity working group with Gross Morne National Park, regular meetings with DFRA to review annual operating plans.				
Water -		Regulatory 20 meter buffers, 100 meter buffers on main stem of salmon rivers, 30 meter no grub zones, guidelines for working inside protected watersheds.				
Outfitters-		Harvest schedules, selective harvest plan, road locations, landscape design.				
Ecotourism -		Main River Heritage River Plan, selective harvest plan.				
Sawmills-		Sawlog exchange agreement will continue.				
Recreation -		Public access to all company built roads, Main River Heritage Plan, regular meetings with local snowmobile clubs.				
Mining -		Approval process to allow mining and quarry activities on CBPP limits.				


		CORNER BROOK PULP & PAPER LIMITED FIVE YEAR OPERATING PLAN		ISO 14001 REGISTERED <small>ENVIRONMENTAL MANAGEMENT SYSTEM</small>	
FMD: 16		Plan Period: Jan 1, 2002 - Dec 31, 2006			
Operating Area: Lower Four Ponds		Inventory Map #: 032-32,31,22,21			
Harvest Area #: K16-19		NTS Map #: 12 H 14			
Forest Inventory					
Gross		Net		Working Group	
Volume:	113,846 m3	Volume:	41,668 m3	bF:	76 %
Area:	1105 ha	Area:	1105 ha	bS:	24 %
Operational Considerations:					
Harvest System:		Selective Harvest, Mechanical , Conventional and Cable Systems			
Terrain Conditions:		Rolling terrain with shallow topsoil over mineral soil and bedrock. The merchantable forest is broken by bog and scrub areas.			
Other Considerations:					
Wildlife - Pine Marten study, connectivity working group with Gross Morne National Park, regular meetings with DFRA to review annual operating plans.					
Water - Regulatory 20 meter buffers, 100 meter buffers on main stem of salmon rivers, 30 meter no grub zones.					
Outfitters- Harvest schedules, selective harvest plan, road locations, landscape design.					
Ecotourism - Main River Heritage River Plan, selective harvest plan.					
Sawmills- Sawlog exchange agreement will continue.					
Recreation - Public access to all company built roads, Main River Heritage Plan, regular meetings with local snowmobile clubs.					
Mining - Approval process to allow mining and quarry activities on CBPP limits.					





		CORNER BROOK PULP & PAPER LIMITED FIVE YEAR OPERATING PLAN		ISO 14001 REGISTERED <small>ENVIRONMENTAL MANAGEMENT SYSTEM</small>	
		FMD: 16		Plan Period: Jan 1, 2002 - Dec 31, 2006	
Operating Area: Humber N. Branch		Inventory Map #: 040-32,41,42			
Harvest Area #: K16-02a		NTS Map #: 12 H 11			
Forest Inventory					
Gross		Net		Working Group	
Volume:	25,527 m ³	Volume:	18,685 m ³	bF:	65 %
Area:	208 ha	Area:	692 ha	bS:	35 %
Operational Considerations:					
Harvest System:	Mechanical, Conventional and Cable Systems				
Terrain Conditions:	Rolling terrain with shallow topsoil over mineral soil and bedrock. The merchantable forest is broken by bog and scrub areas.				
Other Considerations:					
Wildlife -	Pine Marten habitat study, connectivity working group with Gross Morne National Park, regular meetings with DFRA to review annual operating plans.				
Water -	Regulatory 20 meter buffers, 100 meter buffers on main stem of salmon rivers, 30 meter no grub zones, guidelines for working inside protected watersheds.				
Outfitters-	Harvest and road construction scheduling to avoid conflicts, all outfitting locations plotted on CBPP harvest maps for planning purposes.				
Ecotourism-	Meetings with snowmobile tour operators. Public access to all company built roads.				
Sawmills-	Sawlog exchange agreement will continue. Commercial and domestic hardwood permits available for CBPP limits.				
Recreation -	Public access to all company built roads, regular meetings with local snowmobile clubs. Approval process for cottage development on CBPP limits.				
Mining -	Approval process to allow mining and quarry activities on CBPP limits.				


		CORNER BROOK PULP & PAPER LIMITED FIVE YEAR OPERATING PLAN			ISO 14001 REGISTERED <small>INTERNATIONAL STANDARD 15000</small>	
		FMD: 16		Plan Period: Jan 1, 2002 - Dec 31, 2006		
Operating Area: Main River Link		Inventory Map #: 032-12,13, 040-42,43				
Harvest Area #: K16-15		NTS Map #: 12 H 14, 11				
Forest Inventory						
Gross		Net		Working Group		
Volume:	228,055 m3	Volume:	83,468 m3	bF:	75 %	
Area:	1782 ha	Area:	1782 ha	bS:	25 %	
Operational Considerations:						
Harvest System:	Selective Harvest, Mechanical , Conventional and Cable Systems					
Terrain Conditions:	Rolling terrain with shallow top soil over mineral soil and bedrock. The merchantable forest is broken by bog and scrub areas.					
Other Considerations:						
Wildlife -	Pine Marten study, connectivity working group with Gross Morne National Park, regular meetings with DFRA to review annual operating plans.					
Water -	Regulatory 20 meter buffers, 100 meter buffers on main stem of salmon rivers, 30 meter no grub zones, guidelines for working inside protected watersheds.					
Outfitters-	Harvest schedules, selective harvest plan, road locations, landscape design.					
Ecotourism -	Main River Heritage River Plan, selective harvest plan.					
Sawmills-	Sawlog exchange agreement will continue.					
Recreation -	Public access to all company built roads, Main River Heritage Plan, regular meetings with local snowmobile clubs.					
Mining -	Approval process to allow mining and quarry activities on CBPP limits.					

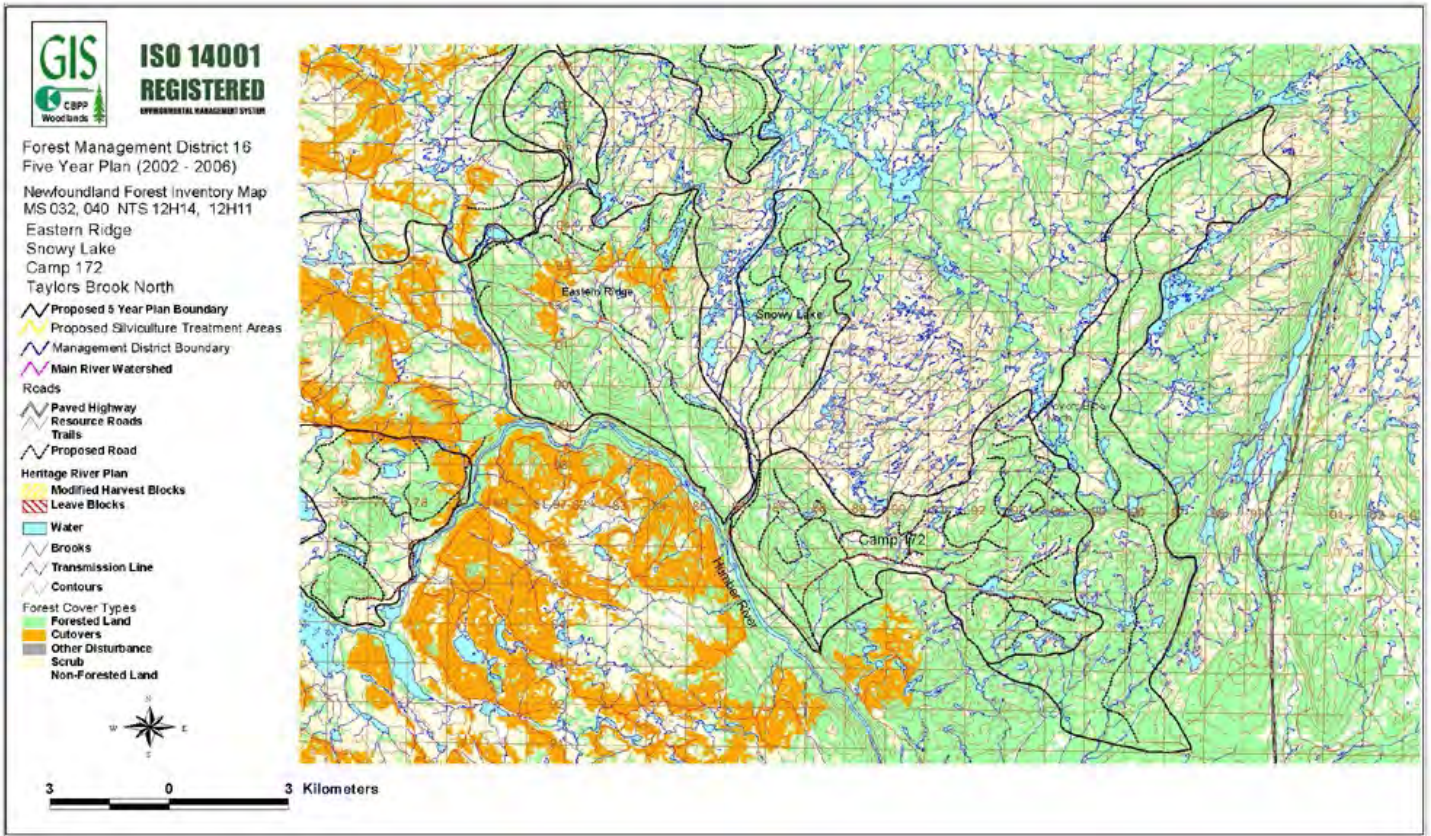



		CORNER BROOK PULP & PAPER LIMITED FIVE YEAR OPERATING PLAN		ISO 14001 REGISTERED <small>ENVIRONMENTAL MANAGEMENT SYSTEM</small>	
		FMD: 16		Plan Period: Jan 1, 2002 - Dec 31, 2006	
Operating Area: Eastern Ridge		Inventory Map #: 040-32,33,42,43			
Harvest Area #: K16-02b		NTS Map #: 12 H 11			
Forest Inventory					
Gross		Net		Working Group	
Volume:	179,850 m ³	Volume:	131,650 m ³	bF:	73 %
Area:	1493 ha	Area:	1493 ha	bS:	27 %
Operational Considerations:					
Harvest System:	Mechanical, Conventional and Cable Systems				
Terrain Conditions:	Hilly terrain with steep slopes, shallow topsoil over mineral soil The merchantable forest is broken by bog and scrub areas.				
Other Considerations:					
Wildlife -	Pine Marten habitat study, connectivity working group with Gross Morne National Park, regular meetings with DFRA to review annual operating plans.				
Water -	Regulatory 20 meter buffers, 100 meter buffers on main stem of salmon rivers, 30 meter no grub zones, guidelines for working inside protected watersheds.				
Outfitters-	Harvest and road construction scheduling to avoid conflicts, all outfitting locations plotted on CBPP harvest maps for planning purposes.				
Ecotourism-	Meetings with snowmobile tour operators. Public access to all company built roads.				
Sawmills-	Sawlog exchange agreement will continue. Commercial and domestic hardwood permits available for CBPP limits.				
Recreation -	Public access to all company built roads, regular meetings with local snowmobile clubs. Approval process for cottage development on CBPP limits.				
Mining -	Approval process to allow mining and quarry activities on CBPP limits.				

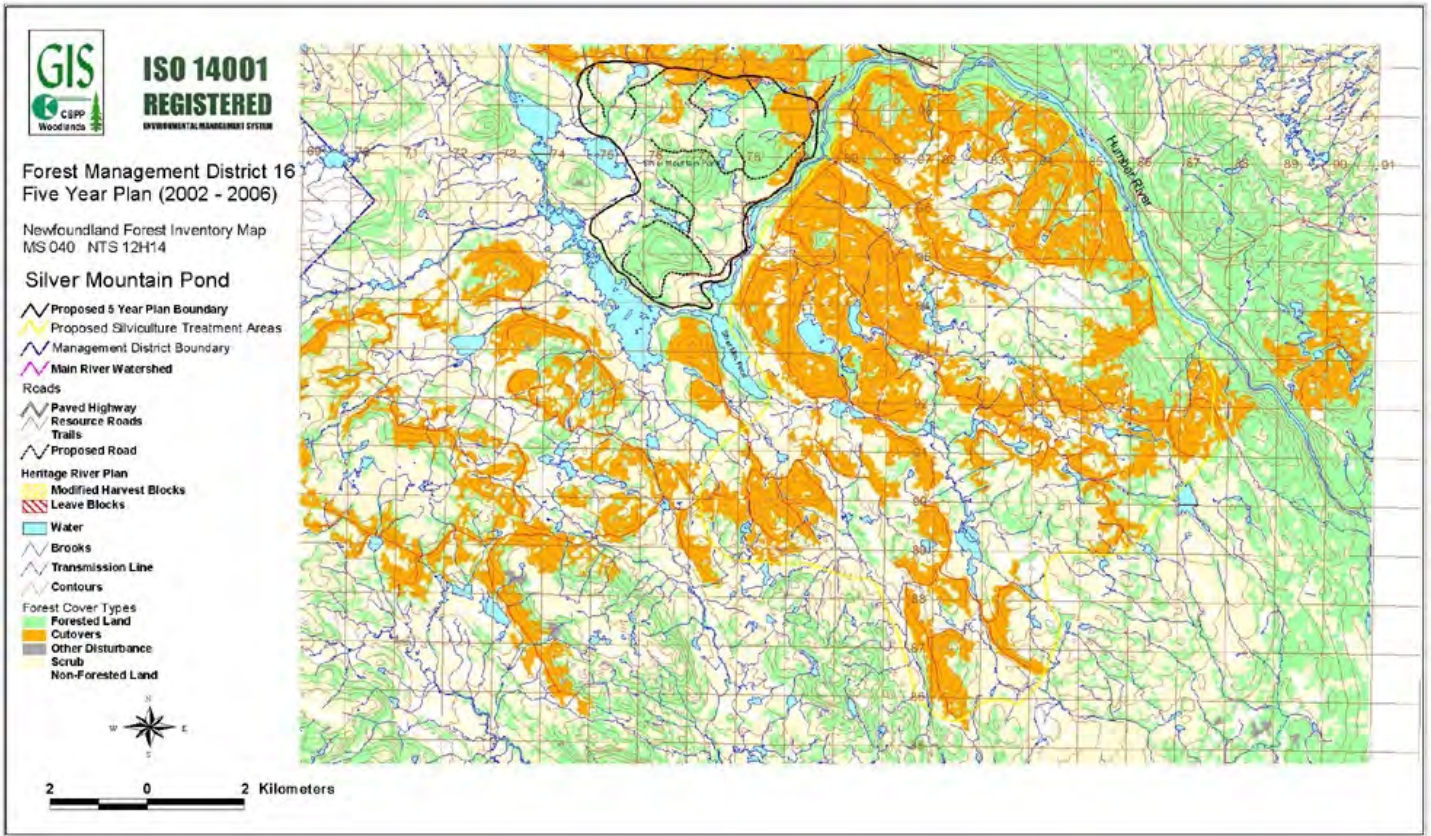
		CORNER BROOK PULP & PAPER LIMITED FIVE YEAR OPERATING PLAN		ISO 14001 REGISTERED <small>ENVIRONMENTAL MANAGEMENT SYSTEM</small>	
		FMD: 16		Plan Period: Jan 1, 2002 - Dec 31, 2006	
Operating Area: Snowy Lake		Inventory Map #: 040-33,43			
Harvest Area #: K16-29		NTS Map #: 12 H 11			
Forest Inventory					
Gross		Net		Working Group	
Volume:	68,583 m ³	Volume:	50,203 m ³	bF:	73 %
Area:	548 ha	Area:	548 ha	bS:	27 %
Operational Considerations:					
Harvest System:	Mechanical, Conventional and Cable Systems				
Terrain Conditions:	Hilly terrain with steep slopes, shallow topsoil over mineral soil The merchantable forest is broken by bog and scrub areas.				
Other Considerations:					
Wildlife -	Pine Marten habitat study, connectivity working group with Gross Morne National Park, regular meetings with DFRA to review annual operating plans.				
Water -	Regulatory 20 meter buffers, 100 meter buffers on main stem of salmon rivers, 30 meter no grub zones, guidelines for working inside protected watersheds.				
Outfitters-	Harvest and road construction scheduling to avoid conflicts, all outfitting locations plotted on CBPP harvest maps for planning purposes.				
Ecotourism -	Meetings with snowmobile tour operators. Public access to all company built roads.				
Sawmills-	Sawlog exchange agreement will continue. Commercial and domestic hardwood permits available for CBPP limits.				
Recreation -	Public access to all company built roads, regular meetings with local snowmobile clubs. Approval process for cottage development on CBPP limits.				
Mining -	Approval process to allow mining and quarry activities on CBPP limits.				


		CORNER BROOK PULP & PAPER LIMITED FIVE YEAR OPERATING PLAN		ISO 14001 REGISTERED <small>ENVIRONMENTAL MANAGEMENT SYSTEM</small>	
		FMD: 16		Plan Period: Jan 1, 2002 - Dec 31, 2006	
Operating Area: Camp 172		Inventory Map #: 040-23,24,33,34			
Harvest Area #: K16-27		NTS Map #: 12 H 11			
Forest Inventory					
Gross		Net		Working Group	
Volume:	163,124 m3	Volume:	119,406 m3	bF:	69 %
Area:	1365 ha	Area:	1365 ha	bS:	31 %
Operational Considerations:					
Harvest System:	Mechanical, Conventional and Cable Systems				
Terrain Conditions:	Hilly terrain with steep slopes, shallow topsoil over mineral soil The merchantable forest is broken by bog and scrub areas.				
Other Considerations:					
Wildlife -	Pine Marten habitat study, connectivity working group with Gross Morne National Park, regular meetings with DFRA to review annual operating plans.				
Water -	Regulatory 20 meter buffers, 100 meter buffers on main stem of salmon rivers, 30 meter no grub zones, guidelines for working inside protected watersheds.				
Outfitters-	Harvest and road construction scheduling to avoid conflicts, all outfitting locations plotted on CBPP harvest maps for planning purposes.				
Ecotourism-	Meetings with snowmobile tour operators. Public access to all company built roads.				
Sawmills-	Sawlog exchange agreement will continue. Commercial and domestic hardwood permits available for CBPP limits.				
Recreation -	Public access to all company built roads, regular meetings with local snowmobile clubs. Approval process for cottage development on CBPP limits.				
Mining -	Approval process to allow mining and quarry activities on CBPP limits.				

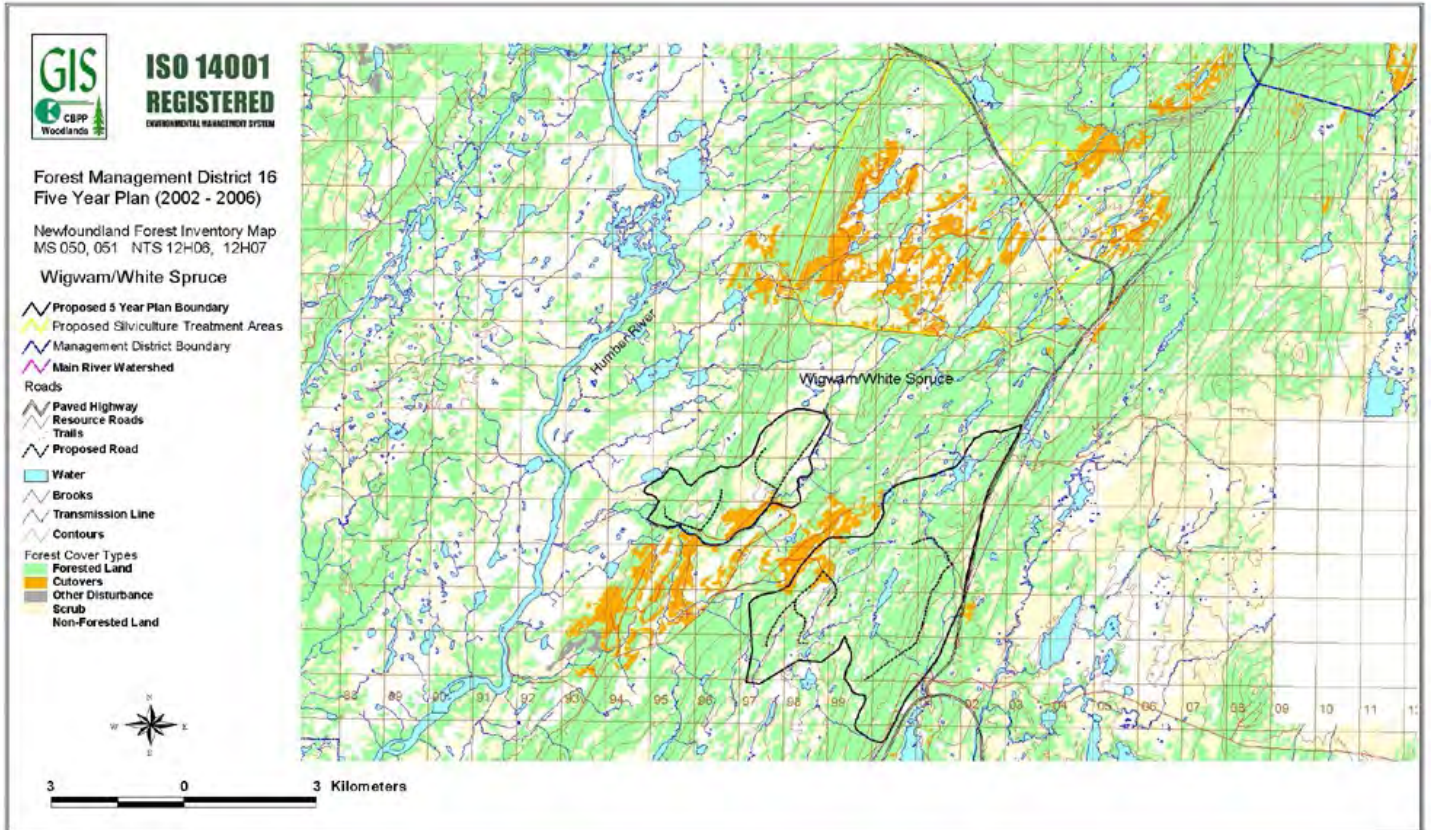
		CORNER BROOK PULP & PAPER LIMITED FIVE YEAR OPERATING PLAN			ISO 14001 REGISTERED <small>INTERNATIONAL STANDARD 15000</small>	
		FMD: 16		Plan Period: Jan 1, 2002 - Dec 31, 2006		
Operating Area: Taylors Bk. North		Inventory Map #: 040-24,34,44				
Harvest Area #: K16-28		NTS Map #: 12 H 11				
Forest Inventory						
Gross		Net		Working Group		
Volume:	81,387 m3	Volume:	40,954 m3	bF:	74 %	
Area:	692 ha	Area:	692 ha	bS:	26 %	
Operational Considerations:						
Harvest System:		Selective Harvest, Mechanical , Conventional and Cable Systems				
Terrain Conditions:		Rolling terrain with shallow top soil over mineral soil and bedrock. The merchantable forest is broken by bog and scrub areas.				
Other Considerations:						
Wildlife -		Pine Marten study, connectivity working group with Gross Morne National Park, regular meetings with DFRA to review annual operating plans.				
Water -		Regulatory 20 meter buffers, 100 meter buffers on main stem of salmon rivers, 30 meter no grub zones, guidelines for working inside protected watersheds.				
Outfitters -		Harvest schedules, selective harvest plan, road locations.				
Ecotourism -		Main River Heritage River Plan, selective harvest plan. Meetings with local development associations.				
Sawmills -		Sawlog exchange agreement will continue. Commercial and domestic hardwood permits available for CBPP limits.				
Recreation -		Public access to all company built roads, Main River Heritage Plan, regular meetings with local snowmobile clubs. Approval process for cottage development on CBPP limits.				
Mining -		Approval process to allow mining and quarry activities on CBPP limits.				





		CORNER BROOK PULP & PAPER LIMITED FIVE YEAR OPERATING PLAN		ISO 14001 REGISTERED <small>ENVIRONMENTAL MANAGEMENT SYSTEM</small>	
		FMD: 16		Plan Period: Jan 1, 2002 - Dec 31, 2006	
Operating Area: Silver Mtn. Pond		Inventory Map #: 040-22,32			
Harvest Area #: K16-25		NTS Map #: 12 H 11			
Forest Inventory					
Gross		Net		Working Group	
Volume:	61,932 m3	Volume:	45,334 m3	bF:	71 %
Area:	557 ha	Area:	557 ha	bS:	29 %
Operational Considerations:					
Harvest System:	Mechanical, Conventional and Cable Systems				
Terrain Conditions:	Hilly terrain with steep slopes, shallow topsoil over mineral soil The merchantable forest is broken by bog and scrub areas.				
Other Considerations:					
Wildlife -	Pine Marten habitat study, connectivity working group with Gross Morne National Park, regular meetings with DFRA to review annual operating plans.				
Water -	Regulatory 20 meter buffers, 100 meter buffers on main stem of salmon rivers, 30 meter no grub zones, guidelines for working inside protected watersheds.				
Outfitters-	Harvest and road construction scheduling to avoid conflicts, all outfitting locations plotted on CBPP harvest maps for planning purposes.				
Ecotourism -	Meetings with snowmobile tour operators. Public access to all company built roads.				
Sawmills-	Sawlog exchange agreement will continue. Commercial and domestic hardwood permits available for CBPP limits.				
Recreation -	Public access to all company built roads, regular meetings with local snowmobile clubs. Approval process for cottage development on CBPP limits.				
Mining -	Approval process to allow mining and quarry activities on CBPP limits.				

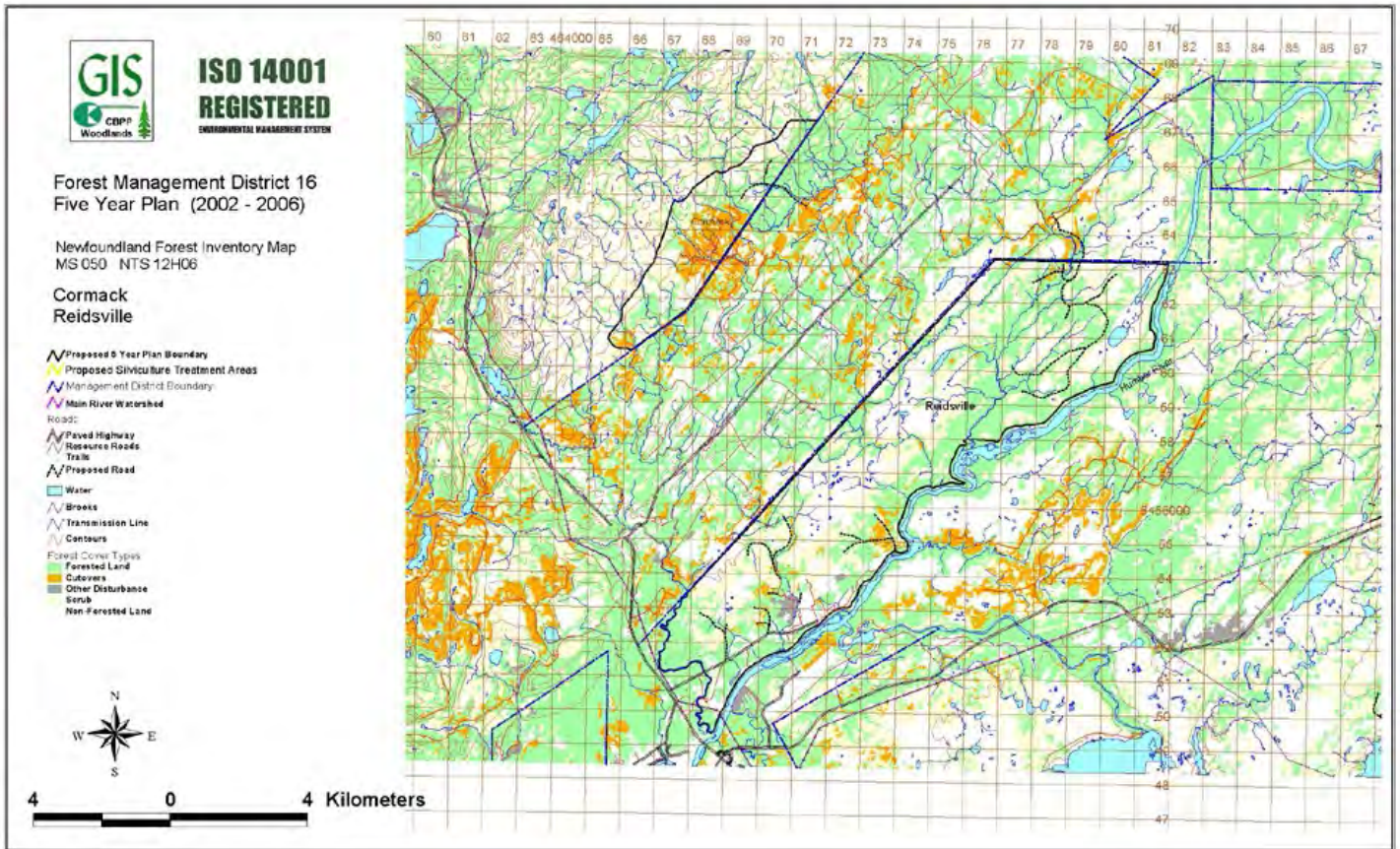



		CORNER BROOK PULP & PAPER LIMITED FIVE YEAR OPERATING PLAN		ISO 14001 REGISTERED <small>ENVIRONMENTAL MANAGEMENT SYSTEM</small>	
		FMD: 16		Plan Period: Jan 1, 2002 - Dec 31, 2006	
Operating Area: Wigwam/White Sp.		Inventory Map #: 050-24,34, 051-21,31			
Harvest Area #: K16-14		NTS Map #: 12 H 06,09			
Forest Inventory					
Gross		Net		Working Group	
Volume:	46,309 m3	Volume:	33,898 m3	bF:	68 %
Area:	369 ha	Area:	369 ha	bS:	32 %
Operational Considerations:					
Harvest System:	Mechanical, Conventional and Cable Systems				
Terrain Conditions:	Flat and Hilly terrain with steep slopes, deep topsoil over mineral soil				
	The merchantable forest is broken by bog and scrub areas.				
Other Considerations:					
Wildlife -	Pine Marten habitat study, regular meetings with DFRA to review annual operating plans.				
Water -	Regulatory 20 meter buffers, 100 meter buffers on main stem of salmon rivers, 30 meter no grub zones, guidelines for working inside protected watersheds.				
Outfitters-	Harvest and road construction scheduling to avoid conflicts, all outfitting locations plotted on CBPP harvest maps for planning purposes.				
Ecotourism-	Meetings with snowmobile tour operators. Public access to all company built roads.				
Sawmills-	Sawlog exchange agreement will continue.				
	Commercial and domestic hardwood permits available for CBPP limits.				
Recreation -	Public access to all company built roads, regular meetings with local snowmobile clubs. Approval process for cottage development on CBPP limits.				
Mining -	Approval process to allow mining and quarry activities on CBPP limits.				





		CORNER BROOK PULP & PAPER LIMITED FIVE YEAR OPERATING PLAN			ISO 14001 REGISTERED <small>ENVIRONMENTAL MANAGEMENT SYSTEM</small>	
		FMD: 16		Plan Period: Jan 1, 2002 - Dec 31, 2006		
Operating Area: Cormack		Inventory Map #: 050-11,21				
Harvest Area #: K16-07		NTS Map #: 12 H 06				
Forest Inventory						
Gross		Net		Working Group		
Volume:	10,806 m3	Volume:	7,910 m3	bF:	75 %	
Area:	100 ha	Area:	100 ha	bS:	25 %	
Operational Considerations:						
Harvest System:		Mechanical , Conventional and Cable Systems				
Terrain Conditions:		Hilly terrain, steep slopes, shallow top soil over mineral soil The merchantable forest is broken by bog and scrub areas.				
Other Considerations:						
Wildlife -		Pine Marten habitat study, regular meetings with DFRA to review annual operating plans.				
Water -		Regulatory 20 meter buffers, 100 meter buffers on main stem of salmon rivers, 30 meter no grub zones, guidelines for working inside protected watersheds.				
Outfitters-		Harvest and road construction scheduling to avoid conflicts, all outfitting locations plotted on CBPP harvest maps for planning purposes.				
Ecotourism -		Meetings with snowmobile tour operators. Public access to all company built roads.				
Sawmills-		Sawlog exchange agreement will continue. Commercial and domestic hardwood permits available for CBPP limits. Meeting with community counsel to address local operators concerns.				
Recreation -		Public access to all company built roads, regular meetings with local snowmobile clubs. Approval process for cottage development on CBPP limits.				
Mining -		Approval process to allow mining and quarry activities on CBPP limits.				


		CORNER BROOK PULP & PAPER LIMITED FIVE YEAR OPERATING PLAN			ISO 14001 REGISTERED <small>ENVIRONMENTAL MANAGEMENT SYSTEM</small>	
		FM D: 16		Plan Period: Jan 1, 2002 - Dec 31, 2006		
Operating Area: Reidsville		Inventory Map #: 050-11,12,22 060-41,42				
Harvest Area #: K16-24		NTS Map #: 12 H 06				
Forest Inventory						
Gross		Net		Working Group		
Volume:	76,301 m3	Volume:	55,852 m3	bF:	35 %	
Area:	675 ha	Area:	675 ha	bS:	65 %	
Operational Considerations:						
Harvest System:		Mechanical , Conventional and Cable Systems				
Terrain Conditions:		Flat terrain, moderate to deep topsoil over mineral soil The merchantable forest is broken by bog and scrub areas.				
Other Considerations:						
Wildlife -		Pine Marten habitat study, regular meetings with DFRA to review annual operating plans.				
Water -		Regulatory 20 meter buffers, 100 meter buffers on main stem of salmon rivers, 30 meter no grub zones, guidelines for working inside protected watersheds.				
Outfitters-		Harvest and road construction scheduling to avoid conflicts, all outfitting locations plotted on CBPP harvest maps for planning purposes.				
Ecotourism -		Meetings with snowmobile tour operators. Public access to all company built roads.				
Sawmills-		Sawlog exchange agreement will continue. Commercial and domestic hardwood permits available for CBPP limits. Meeting with community counsel to address local operators concerns.				
Recreation -		Public access to all company built roads, regular meetings with local snowmobile clubs. Approval process for cottage development on CBPP limits.				
Agriculture-		An agreement to use West Branch brook as the western boundary for this block.				
Mining -		Approval process to allow mining and quarry activities on CBPP limits.				

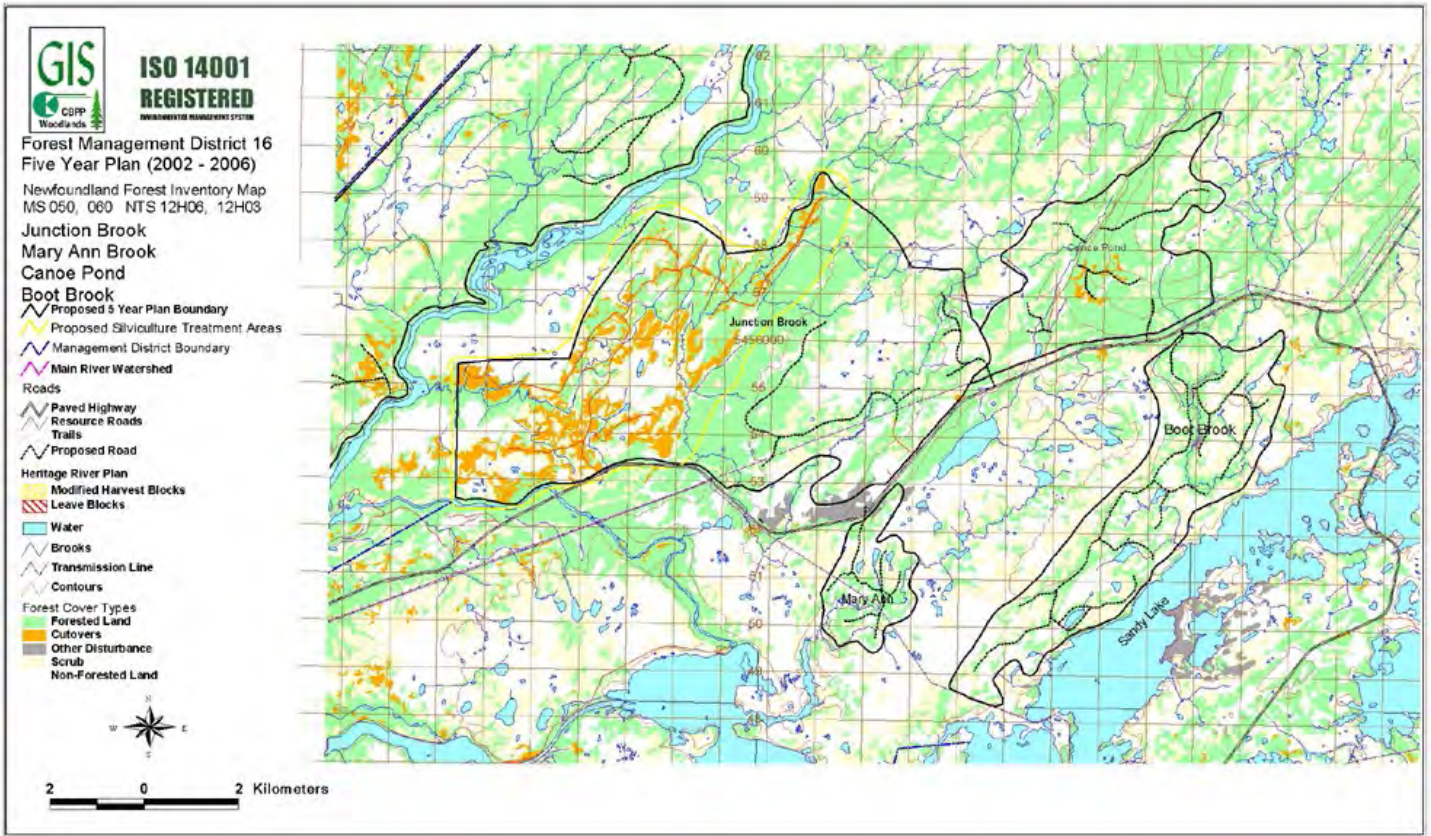



		CORNER BROOK PULP & PAPER LIMITED FIVE YEAR OPERATING PLAN		ISO 14001 REGISTERED <small>ENVIRONMENTAL MANAGEMENT SYSTEM</small>	
		FMD: 16		Plan Period: Jan 1, 2002 - Dec 31, 2006	
Operating Area: Junction Brook		Inventory Map #: 050-13,14 060-42,43			
Harvest Area #: K16-13		NTS Map #: 12 H 06,03			
Forest Inventory					
Gross		Net		Working Group	
Volume:	60,899 m3	Volume:	44,578 m3	bF:	28 %
Area:	484 ha	Area:	484 ha	bS:	72 %
Operational Considerations:					
Harvest System:	Mechanical, Conventional and Cable Systems				
Terrain Conditions:	Flat terrain, moderate to deep topsoil over mineral soil				
	The merchantable forest is broken by bog and scrub areas.				
Other Considerations:					
Wildlife -	Pine Marten habitat study, regular meetings with DFRA to review annual operating plans.				
Water -	Regulatory 20 meter buffers, 100 meter buffers on main stem of salmon rivers, 30 meter no grub zones, guidelines for working inside protected watersheds.				
Outfitters-	Harvest and road construction scheduling to avoid conflicts, all outfitting locations plotted on CBPP harvest maps for planning purposes.				
Ecotourism-	Meetings with snowmobile tour operators. Public access to all company built roads.				
Sawmills-	Sawlog exchange agreement will continue.				
	Commercial and domestic hardwood permits available for CBPP limits.				
Recreation -	Public access to all company built roads, regular meetings with local snowmobile clubs. Approval process for cottage development on CBPP limits.				
Mining -	Approval process to allow mining and quarry activities on CBPP limits.				

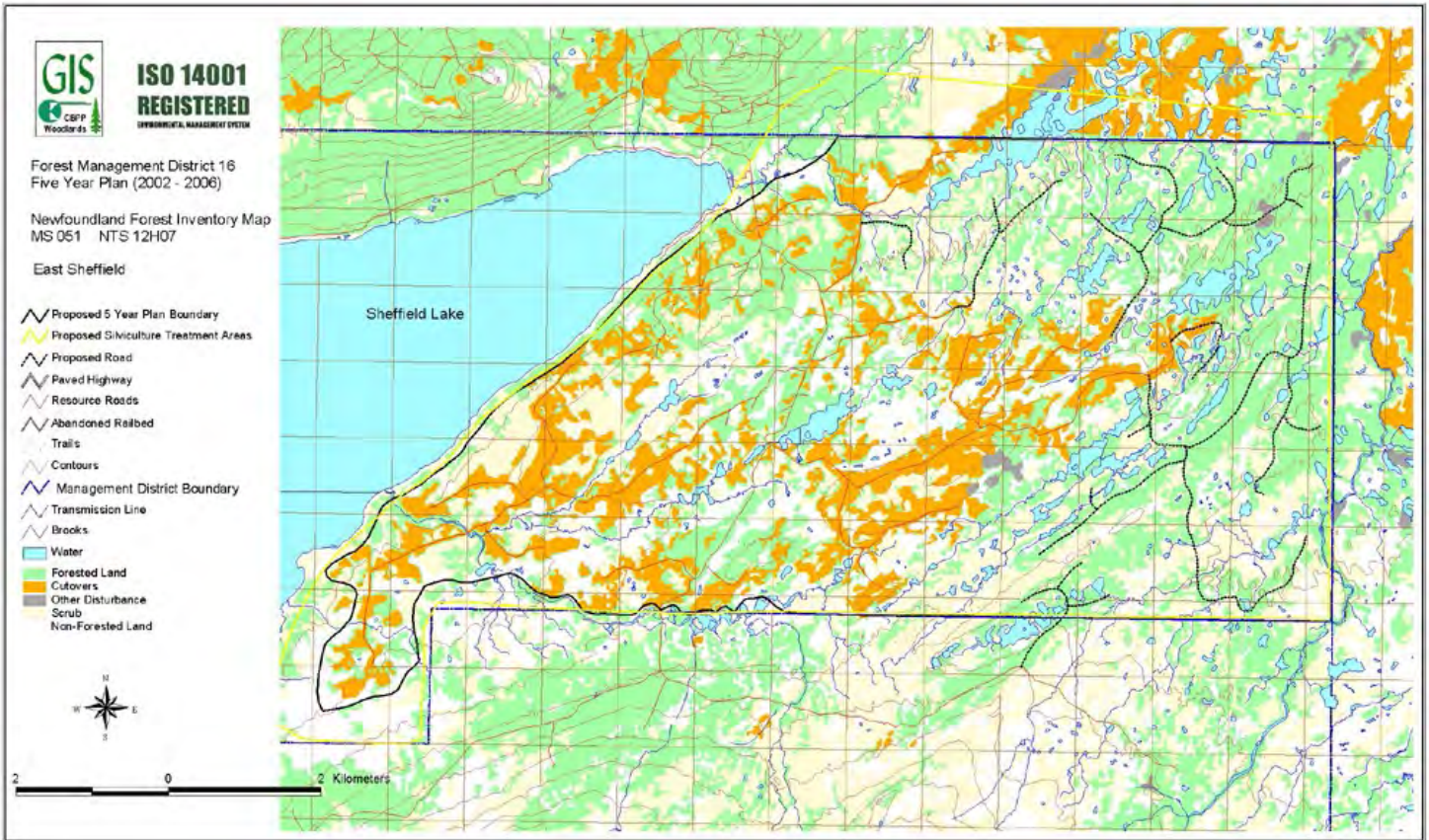
		CORNER BROOK PULP & PAPER LIMITED FIVE YEAR OPERATING PLAN		ISO 14001 REGISTERED <small>ENVIRONMENTAL MANAGEMENT SYSTEM</small>	
FMD: 16		Plan Period: Jan 1, 2002 - Dec 31, 2006			
Operating Area: Mary Ann Brook		Inventory Map #: 060-43			
Harvest Area #: K16-13b		NTS Map #: 12 H 03			
Forest Inventory					
Gross		Net		Working Group	
Volume:	18,544 m3	Volume:	13,574 m3	bF:	26 %
Area:	155 ha	Area:	155 ha	bS:	74 %
Operational Considerations:					
Harvest System:		Mechanical , Conventional and Cable Systems			
Terrain Conditions:		Flat terrain, moderate to deep topsoil over mineral soil The merchantable forest is broken by bog and scrub areas.			
Other Considerations:					
Wildlife		- Pine Marten habitat study, regular meetings with DFRA to review annual operating plans.			
Water		- Regulatory 20 meter buffers, 100 meter buffers on main stem of salmon rivers, 30 meter no grub zones, guidelines for working inside protected watersheds.			
Outfitters		- Harvest and road construction scheduling to avoid conflicts, all outfitting locations plotted on CBPP harvest maps for planning purposes.			
Ecotourism		- Meetings with snowmobile tour operators. Public access to all company built roads.			
Sawmills		- Sawlog exchange agreement will continue. Commercial and domestic hardwood permits available for CBPP limits.			
Recreation		- Public access to all company built roads, regular meetings with local snowmobile clubs. Approval process for cottage development on CBPP limits.			
Mining		- Approval process to allow mining and quarry activities on CBPP limits.			


		CORNER BROOK PULP & PAPER LIMITED FIVE YEAR OPERATING PLAN		ISO 14001 REGISTERED <small>ENVIRONMENTAL MANAGEMENT SYSTEM</small>	
		FMD: 16		Plan Period: Jan 1, 2002 - Dec 31, 2006	
Operating Area: Canoe Pond		Inventory Map #: 050-13,14			
Harvest Area #: K16-13a		NTS Map #: 12 H 06			
Forest Inventory					
Gross		Net		Working Group	
Volume:	25,596 m3	Volume:	18,736 m3	bF:	38 %
Area:	225 ha	Area:	225 ha	bS:	62 %
Operational Considerations:					
Harvest System:	Mechanical, Conventional and Cable Systems				
Terrain Conditions:	Flat terrain, moderate to deep topsoil over mineral soil				
	The merchantable forest is broken by bog and scrub areas.				
Other Considerations:					
Wildlife -	Pine Marten habitat study, regular meetings with DFRA to review annual operating plans.				
Water -	Regulatory 20 meter buffers, 100 meter buffers on main stem of salmon rivers, 30 meter no grub zones, guidelines for working inside protected watersheds.				
Outfitters-	Harvest and road construction scheduling to avoid conflicts, all outfitting locations plotted on CBPP harvest maps for planning purposes.				
Ecotourism -	Meetings with snowmobile tour operators. Public access to all company built roads.				
Sawmills-	Sawlog exchange agreement will continue.				
	Commercial and domestic hardwood permits available for CBPP limits.				
Recreation -	Public access to all company built roads, regular meetings with local snowmobile clubs. Approval process for cottage development on CBPP limits.				
Mining -	Approval process to allow mining and quarry activities on CBPP limits.				

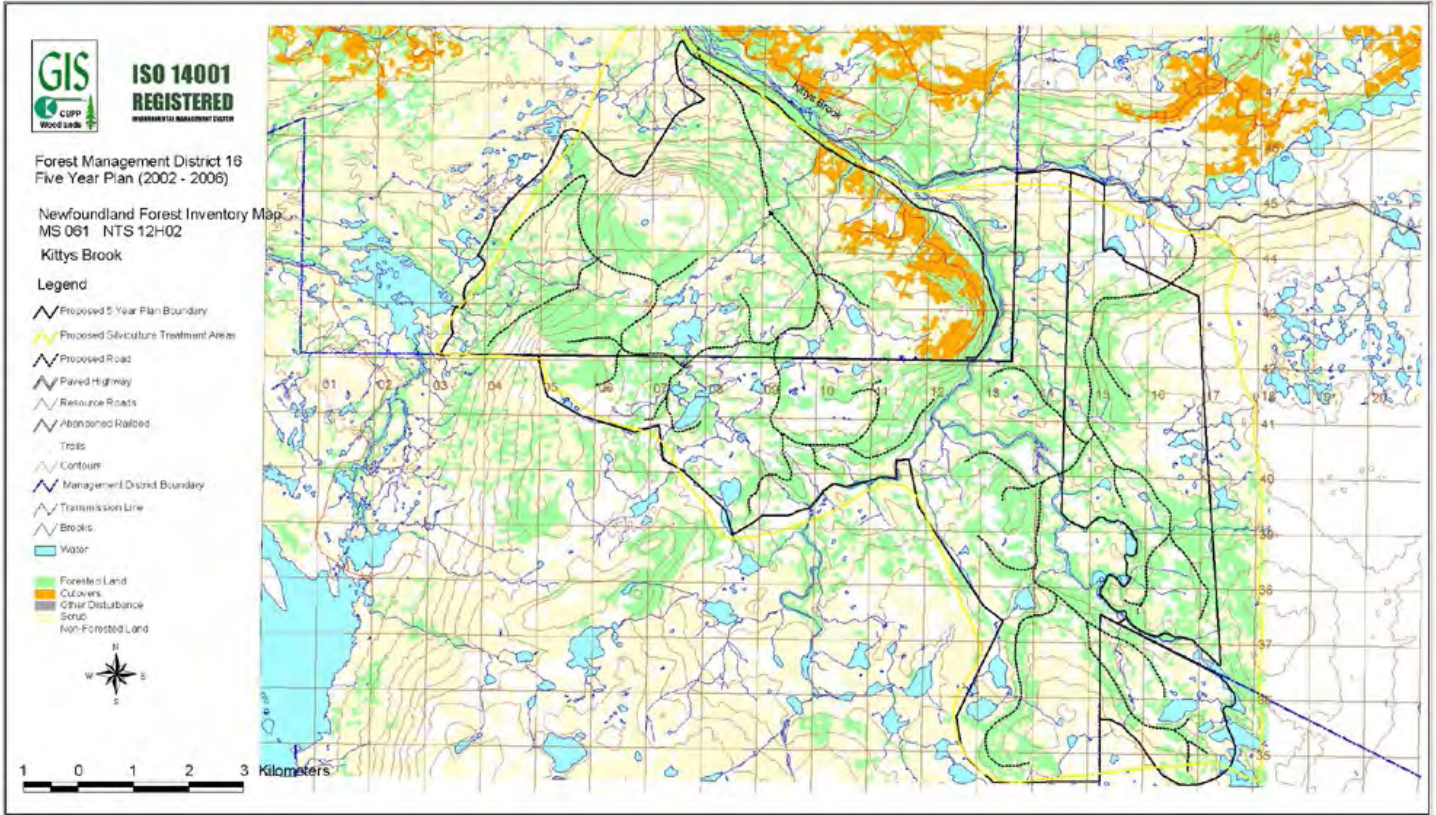
		CORNER BROOK PULP & PAPER LIMITED FIVE YEAR OPERATING PLAN		ISO 14001 REGISTERED <small>ENVIRONMENTAL MANAGEMENT SYSTEM</small>	
		FMD: 16		Plan Period: Jan 1, 2002 - Dec 31, 2006	
Operating Area: Boot Brook		Inventory Map #: 050-13,14 060-43,44			
Harvest Area #: K16-22		NTS Map #: 12 H 06,07			
Forest Inventory					
Gross		Net		Working Group	
Volume:	50,922 m3	Volume:	37,275 m3	bF:	29 %
Area:	424 ha	Area:	424 ha	bS:	71 %
Operational Considerations:					
Harvest System:	Mechanical, Conventional and Cable Systems				
Terrain Conditions:	Flat terrain, moderate to deep topsoil over mineral soil				
	The merchantable forest is broken by bog and scrub areas.				
Other Considerations:					
Wildlife -	Pine Marten habitat study, regular meetings with DFRA to review annual operating plans.				
Water -	Regulatory 20 meter buffers, 100 meter buffers on main stem of salmon rivers, 30 meter no grub zones, guidelines for working inside protected watersheds.				
Outfitters-	Harvest and road construction scheduling to avoid conflicts, all outfitting locations plotted on CBPP harvest maps for planning purposes.				
Ecotourism -	Meetings with snowmobile tour operators. Public access to all company built roads.				
Sawmills-	Sawlog exchange agreement will continue.				
	Commercial and domestic hardwood permits available for CBPP limits.				
Recreation -	Public access to all company built roads, regular meetings with local snowmobile clubs. Approval process for cottage development on CBPP limits.				
Mining -	Approval process to allow mining and quarry activities on CBPP limits.				



		CORNER BROOK PULP & PAPER LIMITED FIVE YEAR OPERATING PLAN		ISO 14001 REGISTERED <small>ENVIRONMENTAL MANAGEMENT SYSTEM</small>	
FMD: 16		Plan Period: Jan 1, 2002 - Dec 31, 2006			
Operating Area: East Sheffield		Inventory Map #: 051-14,24, 052-11,21			
Harvest Area #: K16-05		NTS Map #: 12 H 09, 08			
Forest Inventory					
Gross		Net		Working Group	
Volume:	47,810 m3	Volume:	34,997 m3	bF:	19 %
Area:	471 ha	Area:	471 ha	bS:	81 %
Operational Considerations:					
Harvest System:		Mechanical , Conventional and Cable Systems			
Terrain Conditions:		Flat terrain, moderate to shallow topsoil over mineral soil The merchantable forest is broken by bog and scrub areas.			
Other Considerations:					
Wildlife -		Pine Marten habitat study, regular meetings with DFRA to review annual operating plans.			
Water -		Regulatory 20 meter buffers, 100 meter buffers on main stem of salmon rivers, 30 meter no grub zones, guidelines for working inside protected watersheds.			
Outfitters-		Harvest and road construction scheduling to avoid conflicts, all outfitting locations plotted on CBPP harvest maps for planning purposes.			
Ecotourism -		Meetings with snowmobile tour operators. Public access to all company built roads.			
Sawmills-		Sawlog exchange agreement will continue. Commercial and domestic hardwood permits available for CBPP limits.			
Recreation -		Public access to all company built roads, regular meetings with local snowmobile clubs. Approval process for cottage development on CBPP limits. Meetings with local cabin owners association.			
Mining -		Approval process to allow mining and quarry activities on CBPP limits.			



		CORNER BROOK PULP & PAPER LIMITED FIVE YEAR OPERATING PLAN			ISO 14001 REGISTERED <small>ENVIRONMENTAL MANAGEMENT SYSTEM</small>	
		FMD: 16		Plan Period: Jan 1, 2002 - Dec 31, 2006		
Operating Area: Kittys Brook		Inventory Map #: 060-21,22,31,32				
Harvest Area #: K16-08		NTS Map #: 12 H 03				
Forest Inventory						
Gross		Net		Working Group		
Volume:	320,554 m3	Volume:	234,646 m3	bF:	43 %	
Area:	2389 ha	Area:	2389 ha	bS:	57 %	
Operational Considerations:						
Harvest System:		Mechanical , C onventional and Cable Systems				
Terrain Conditions:		Flat rolling terrain, moderate to shallow topsoil over mineral soil The merchantable forest is broken by bog and scrub areas.				
Other Considerations:						
Wildlife -		Pine Marten habitat study, regular meetings with DFRA to review annual operating plans.				
Water -		Regulatory 20 meter buffers, 100 meter buffers on main stem of salmon rivers, 30 meter no grub zones, guidelines for working inside protected watersheds.				
Outfitters -		Harvest and road construction scheduling to avoid conflicts, all outfitting locations plotted on CBPP harvest maps for planning purposes.				
Ecotourism -		Meetings with snowmobile tour operators. Public access to all company built roads. Agreement with Dept. of Tourism to maintain old railbed and bridges while operating and to enhance when finished for future public use.				
Sawmills -		Sawlog exchange agreement will continue. Commercial and domestic hardwood permits available for CBPP limits. Local sawmill operator will have a fibre supply from this area.				
Recreation -		Public access to all company built roads, regular meetings with local snowmobile clubs. Approval process for cottage development on CBPP limits. Red Pine stands along Sandy Lake to be protected.				
Mining -		Approval process to allow mining and quarry activities on CBPP limits.				



		CORNER BROOK PULP & PAPER LIMITED FIVE YEAR OPERATING PLAN		ISO 14001 REGISTERED <small>INTERNATIONAL STANDARD 15000</small>	
FMD: 16		Plan Period: Jan 1, 2002 - Dec 31, 2006			
Operating Area: Hinds Lake		Inventory Map #: 060-13,14 072-24,34,43,44			
Harvest Area #: K16-06		NTS Map #: 12 H 03 12 A 14			
Forest Inventory					
Gross		Net		Working Group	
Volume:	206,011 m3	Volume:	150,800 m3	bF:	56 %
Area:	1766 ha	Area:	1766 ha	bS:	44 %
Operational Considerations:					
Harvest System:		Mechanical , Conventional and Cable Systems			
Terrain Conditions:		Hilly and Flat terrain, moderate to deep topsoil over mineral soil The merchantable forest is broken by bog and scrub areas.			
Other Considerations:					
Wildlife -		Pine Marten habitat study, regular meetings with DFRA to review annual operating plans.			
Water -		Regulatory 20 meter buffers, 100 meter buffers on main stem of salmon rivers, 30 meter no grub zones, guidelines for working inside protected watersheds.			
Outfitters-		Harvest and road construction scheduling to avoid conflicts, all outfitting locations plotted on CBPP harvest maps for planning purposes.			
Ecotourism -		Meetings with snowmobile tour operators. Public access to all company built roads.			
Sawmills-		Sawlog exchange agreement will continue. Commercial and domestic hardwood permits available for CBPP limits.			
Recreation -		Public access to all company built roads, regular meetings with local snowmobile clubs. Approval process for cottage development on CBPP limits.			
Mining -		Approval process to allow mining and quarry activities on CBPP limits.			

