

NOTES:

1. CONTRACTOR TO GENERAL LOCATION AND ELEVATION OF ALL UNDERGROUND PIPE LINES, UTILITIES AND STRUCTURES PRIOR TO COMMENCING CONSTRUCTION.
2. ALL EXISTING PAVEMENT, WALKWAYS, LANDSCAPING, ETC. TO BE REMOVED AND RECONSTRUCTED TO BE REINSTATED TO ORIGINAL CONDITION PRIOR TO CONSTRUCTION.
3. REFER TO DWG C02 FOR ELECTRICAL SITE PLAN.
4. FOR WATER SERVICE ENTRANCES TO BLDG, SEE PIPE SUPPORT AND PIPE RESTRAINT DETAILS ON DWG C5.

NO.	REVISIONS	DATE
3	ISSUED FOR ENVIRONMENTAL APPROVAL	02/11/18
2	DELETIONS FROM CONTRACT	02/11/18
1	GENERAL REVISIONS	02/10/18
0	ISSUED FOR TENDER	02/10/18
	REVISIONS	BY: V.M/D

DETAIL/SECTION NO. _____
DWG. NO. _____
WHERE TAKEN _____
CLIENT _____

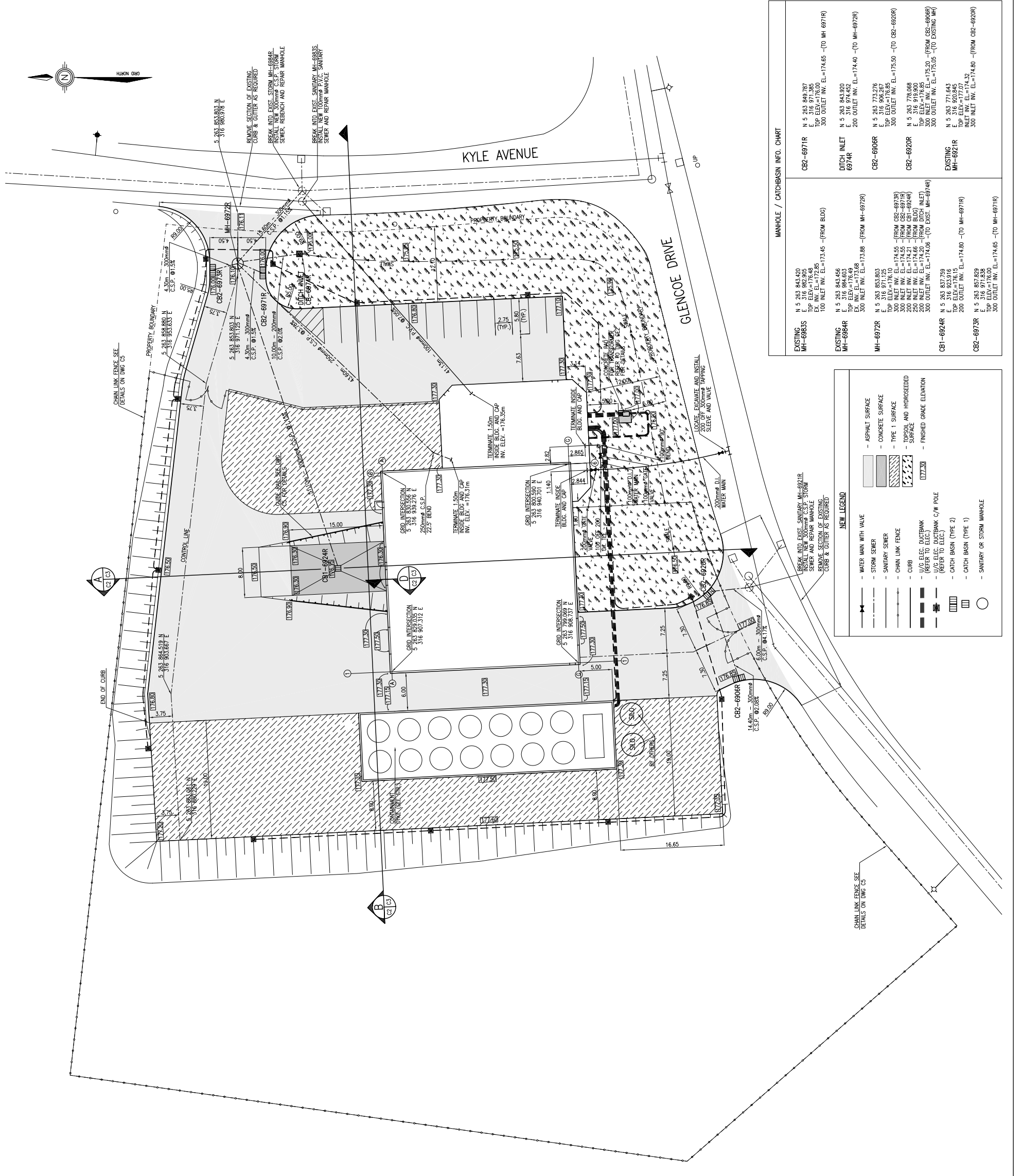


PROJECT TITLE:
OMAX BUILDING
30 KYLE AVENUE, MOUNT PEARL
NEWFOUNDLAND AND
LABRADOR

CONTRACT 1 - SITE DEVELOPMENT AND BUILDING FOUNDATIONS

DRAWING TITLE:
SITE DEVELOPMENT PLAN

SCALE: 1:250
PROJECT No.: 020055
SHEET No.: 2 of 5



MANHOLE / CATCHBASIN INFO. CHART

EXISTING	EXISTING	EXISTING	EXISTING
MH-6983S N 5 263 843.600 E 316 882.805 TOP ELEV.=176.00 EX. INV. ELEV.=172.85 100 INLET INV. ELEV.=173.45 -(FROM BLDG)	MH-6984R N 5 263 843.456 E 316 884.603 TOP ELEV.=176.00 EX. INV. ELEV.=172.85 300 INLET INV. ELEV.=173.88 -(FROM MH-6972R)	MH-6972R N 5 263 853.803 TOP ELEV.=174.10 300 INLET INV. ELEV.=174.55 -(FROM CB2-6973R) 300 INLET INV. ELEV.=174.55 -(FROM CB2-6971R) 250 INLET INV. ELEV.=174.66 -(FROM BLDG) (6924R) 200 INLET INV. ELEV.=174.20 -(FROM DITCH INLET)	EXISTING MH-6921R N 5 263 837.259 E 316 823.916 TOP ELEV.=176.15 200 INLET INV. ELEV.=174.80 -(TO MH-6971R) E 316 857.829 TOP ELEV.=176.00 300 INLET INV. ELEV.=174.65 -(TO MH-6971R)
CB2-6971R N 5 263 849.287 E 316 971.385 TOP ELEV.=176.00 300 OUTLET INV. ELEV.=174.65 -(TO MH 6971R)	DITCH INLET 6974R N 5 263 843.920 E 316 971.385 200 OUTLET INV. ELEV.=174.40 -(TO MH-6972R)	CB2-6906R N 5 263 771.276 E 316 906.267 TOP ELEV.=176.85 300 OUTLET INV. ELEV.=175.50 -(TO CB2-6920R)	CB2-6920R N 5 263 778.088 E 316 919.900 TOP ELEV.=176.85 300 OUTLET INV. ELEV.=175.05 -(TO EXIST. MH-6946R)

NEW LEGEND

	- WATER MAIN WITH VALVE
	- STORM SEWER
	- SANITARY SEWER
	- CHAIN LINK FENCE
	- CURB
	- 1/2 ELEC. DUCTBANK (REFER TO ELEC.) (REFER TO ELEC.)
	- CATCH BASIN (TYPE 1)
	- CATCH BASIN (TYPE 2)
	- SANITARY OR STORM MANHOLE
	- ASPHALT SURFACE
	- CONCRETE SURFACE
	- TYPE 1 SURFACE
	- TOPSOIL AND HYDROSEEDDED SURFACE
	- FINISHED GRADE ELEVATION
	- WATER MAIN C/W POLE

MANHOLE / CATCHBASIN INFO. CHART

EXISTING MH-6983S
N 5 263 843.600
E 316 882.805
TOP ELEV.=176.00
EX. INV. ELEV.=172.85
100 INLET INV. ELEV.=173.45 -(FROM BLDG)

EXISTING MH-6984R
N 5 263 843.456
E 316 884.603
TOP ELEV.=176.00
EX. INV. ELEV.=172.85
300 INLET INV. ELEV.=173.88 -(FROM MH-6972R)

MH-6972R
N 5 263 853.803
TOP ELEV.=174.10
300 INLET INV. ELEV.=174.55 -(FROM CB2-6973R)
300 INLET INV. ELEV.=174.55 -(FROM CB2-6971R)
250 INLET INV. ELEV.=174.66 -(FROM BLDG) (6924R)
200 INLET INV. ELEV.=174.20 -(FROM DITCH INLET)

EXISTING MH-6921R
N 5 263 837.259
E 316 823.916
TOP ELEV.=176.15
200 INLET INV. ELEV.=174.80 -(TO MH-6971R)
E 316 857.829
TOP ELEV.=176.00
300 INLET INV. ELEV.=174.65 -(TO MH-6971R)

CB2-6971R
N 5 263 849.287
E 316 971.385
TOP ELEV.=176.00
300 OUTLET INV. ELEV.=174.65 -(TO MH 6971R)

DITCH INLET 6974R
N 5 263 843.920
E 316 971.385
200 OUTLET INV. ELEV.=174.40 -(TO MH-6972R)

CB2-6906R
N 5 263 771.276
E 316 906.267
TOP ELEV.=176.85
300 OUTLET INV. ELEV.=175.50 -(TO CB2-6920R)

CB2-6920R
N 5 263 778.088
E 316 919.900
TOP ELEV.=176.85
300 OUTLET INV. ELEV.=175.05 -(TO EXIST. MH-6946R)

EXISTING MH-6921R
N 5 263 837.259
E 316 823.916
TOP ELEV.=176.15
200 INLET INV. ELEV.=174.80 -(TO MH-6971R)
E 316 857.829
TOP ELEV.=176.00
300 INLET INV. ELEV.=174.65 -(TO MH-6971R)