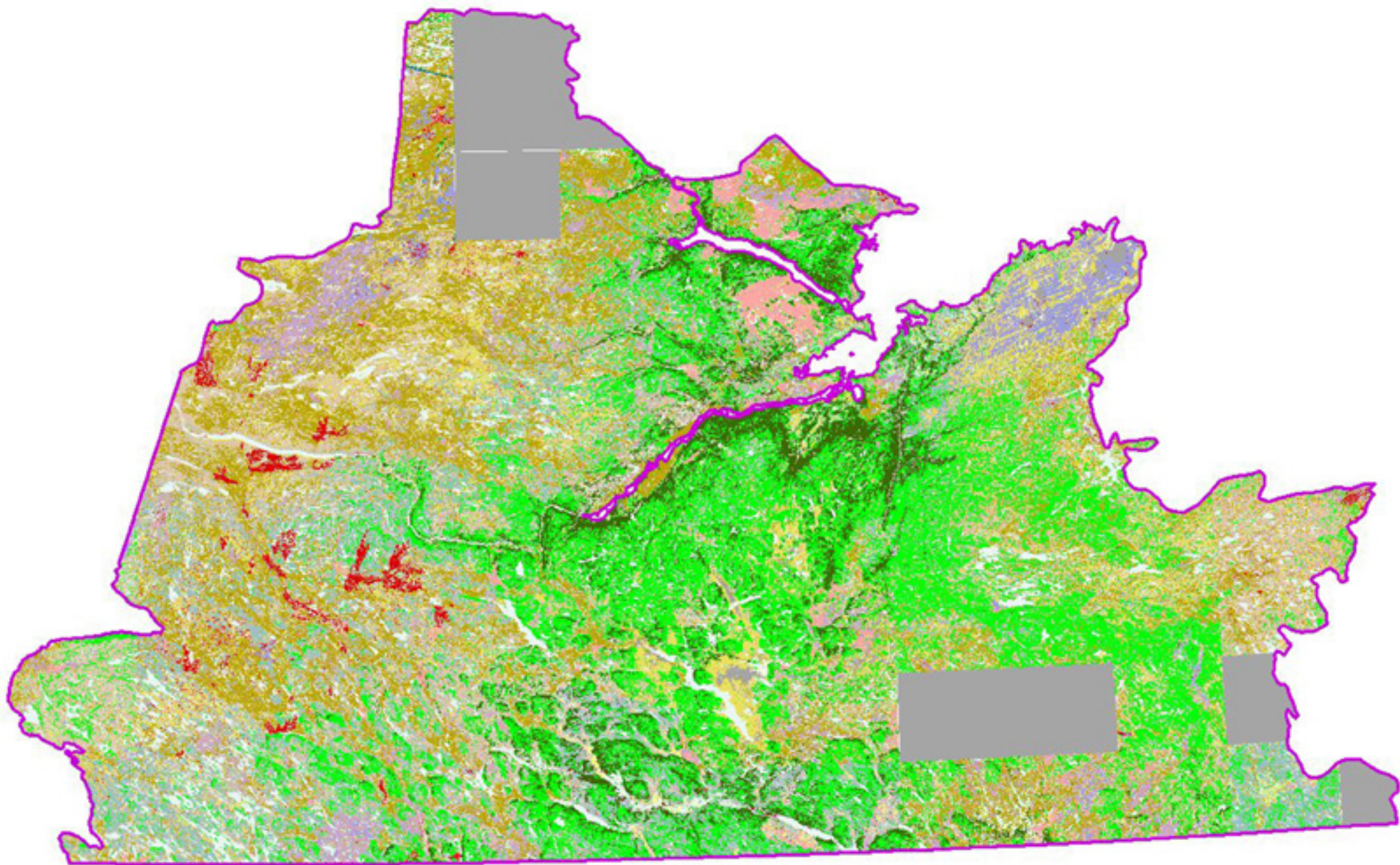


# Map 1: Drieman Vegetation Classification District 19



- District Boundary
- Unclassified
- Heavily Stocked Spruce/Fir Commercial Forest
- Moderately Stocked Spruce/Fir Commercial Forest
- SCS with Sphagnum/Feathermoss
- SCS with Lichen mosses
- Immature Spruce/Fir
- Spruce /Fir Regeneration
- Mixedwood Mature
- Hardwood Mature
- Hardwood Successional
- Hardwood Scrub
- Lichen/Soil Barren
- Rock Barren
- Lichen/Recent Burn
- Recent Burn
- Lichen Scrub/Open Bog
- Open Bog
- String Bog
- Tree Bog
- Wet Sites
- Cleared Land
- Sand
- Waterbodies
- Cloud



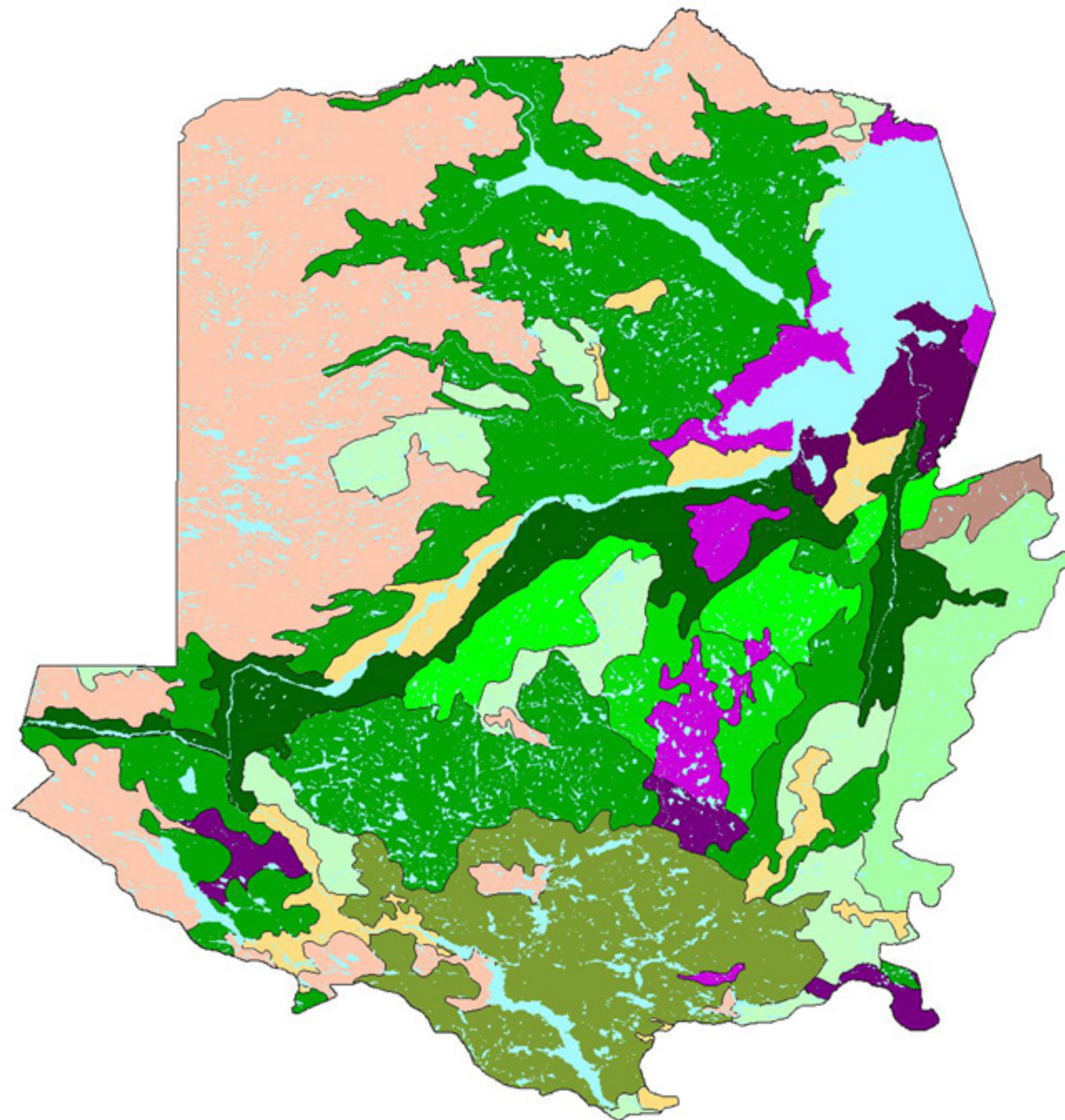
Created By: Dwayne Gooding  
 OF RA, Happy Valley-Goose Bay, Lab.  
 Date: July 29, 2002  
 Method: N/A  
 Photo Scale: 1:250000  
 Datum: NAD83  
 Data Source(s): Labrador Vegetation Classification  
 (file on disk - from Landsat imagery)



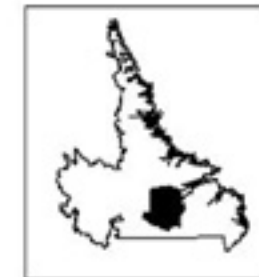




**Map 3: Biophysical Classification with Initial Forestry Potential for District 19A**



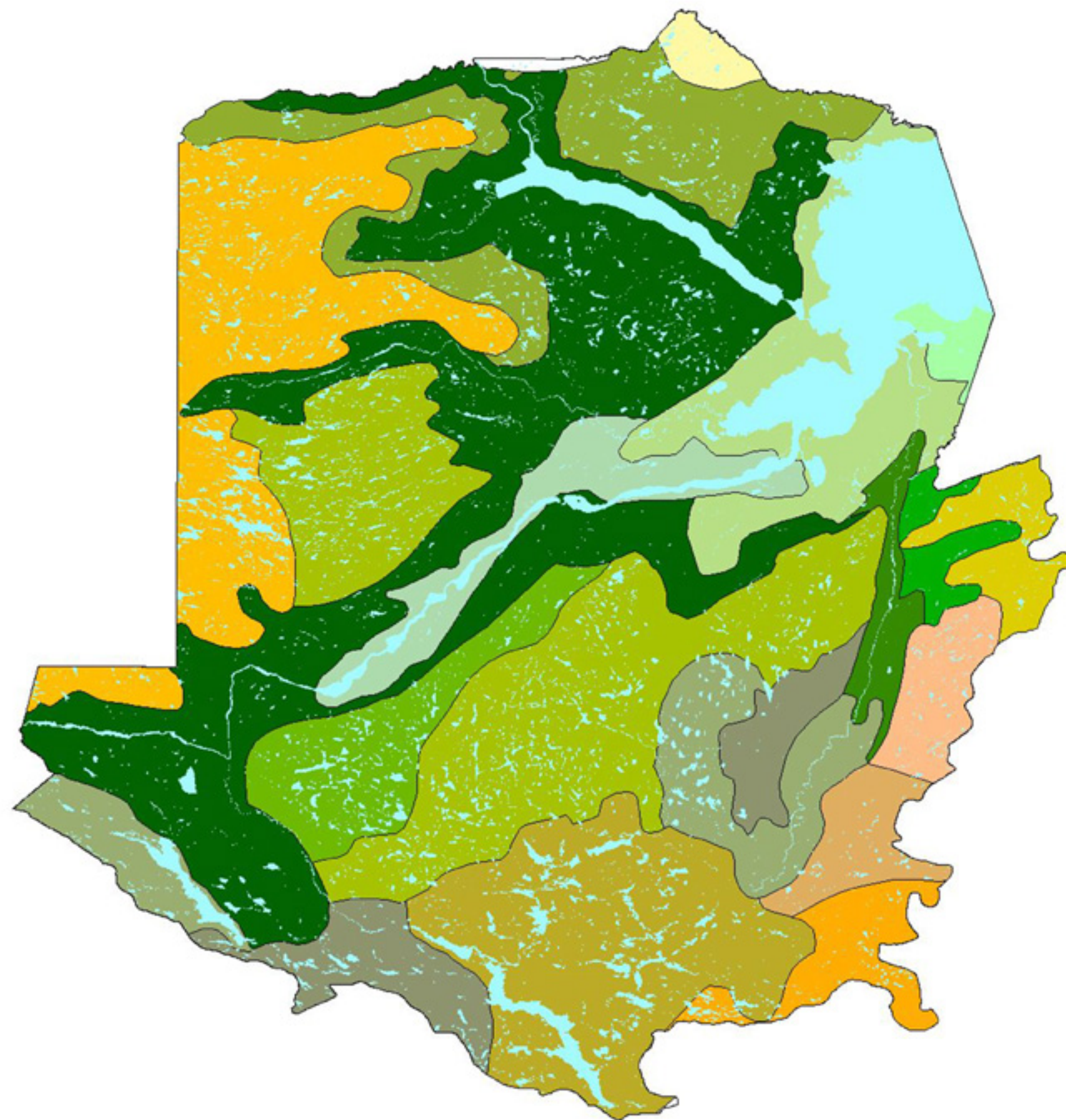
- District Boundary
- Elevation Contour
- Barren Uplands
- Lichen Woodland with Very Few Trees
- Mixed Scrub and Bog with Poor Forest
- Wetlands
- Wetlands with Poor Forest
- Wetlands with Moderate Forest
- Poor Forest on All Terrain Types
- Moderate Forest on Eagle Plateau
- Moderate Forest on Very Rugged Terrain
- Moderate Forest on Undulating Terrain
- Moderate Forest with Large Lakes
- Other Moderate Forest
- Full Forest
- Water



Created By : J. Forsyth, Innu Nation  
 Date: October 4, 2002  
 Projection: Transverse Mercator.  
 Datum: NAD83  
 Data Source: Silva Ecosystem Consultants Ltd.

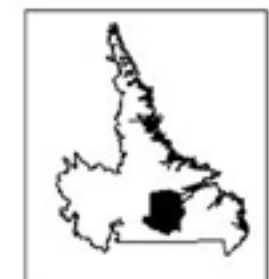


**Map 4: District 19A  
Ecodistricts**



**Ecodistricts**

-  Low Subarctic Forest O-2
-  Low Subarctic Forest O-3
-  Low Subarctic Forest O-4
-  Low Subarctic Forest O-5
-  Low Subarctic Forest S-3
-  Low Subarctic Forest S-4
-  Low Subarctic Forest S-7
-  High Boreal Forest T-1
-  High Boreal Forest T-2
-  High Boreal Forest T-3
-  High Boreal Forest T-4
-  High Boreal Forest T-4
-  High Boreal Forest T-7
-  High Boreal Forest T-8
-  String Bog V-1
-  String Bog V-2
-  String Bog V-3
-  String Bog V-7
-  Lakes



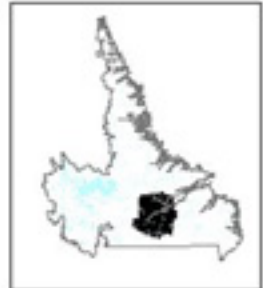
Created By : J. Forsyth, Innu Nation  
 Date: October 4, 2002  
 Projection: Transverse Mercator.  
 Datum: NAD83  
 Data Source: Lopoukine, Silva Ecosystem consultants



Map 5: District 19A Watersheds



- District Boundary
- Watershed Boundary
- Roads
  - Paved Public
  - Unpaved Public
  - Resource Roads
  - Trails and Extraction Roads
- Streams
- Lakes



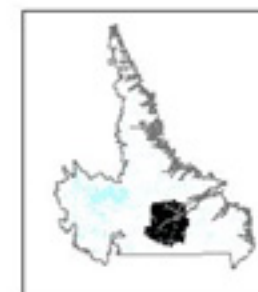
Created By : Deanne Gosling  
 OFRA, Gov. of NF and Lab.  
 Happy Valley-Goose Bay, Lab.  
 Date: July 23, 2002  
 Modified: N/A  
 Projection: Transverse Mercator.  
 Datum: NAD83  
 Data Source: OFRA Forest Inventory Dataset.



**Map 6: District 19 Disturbances**

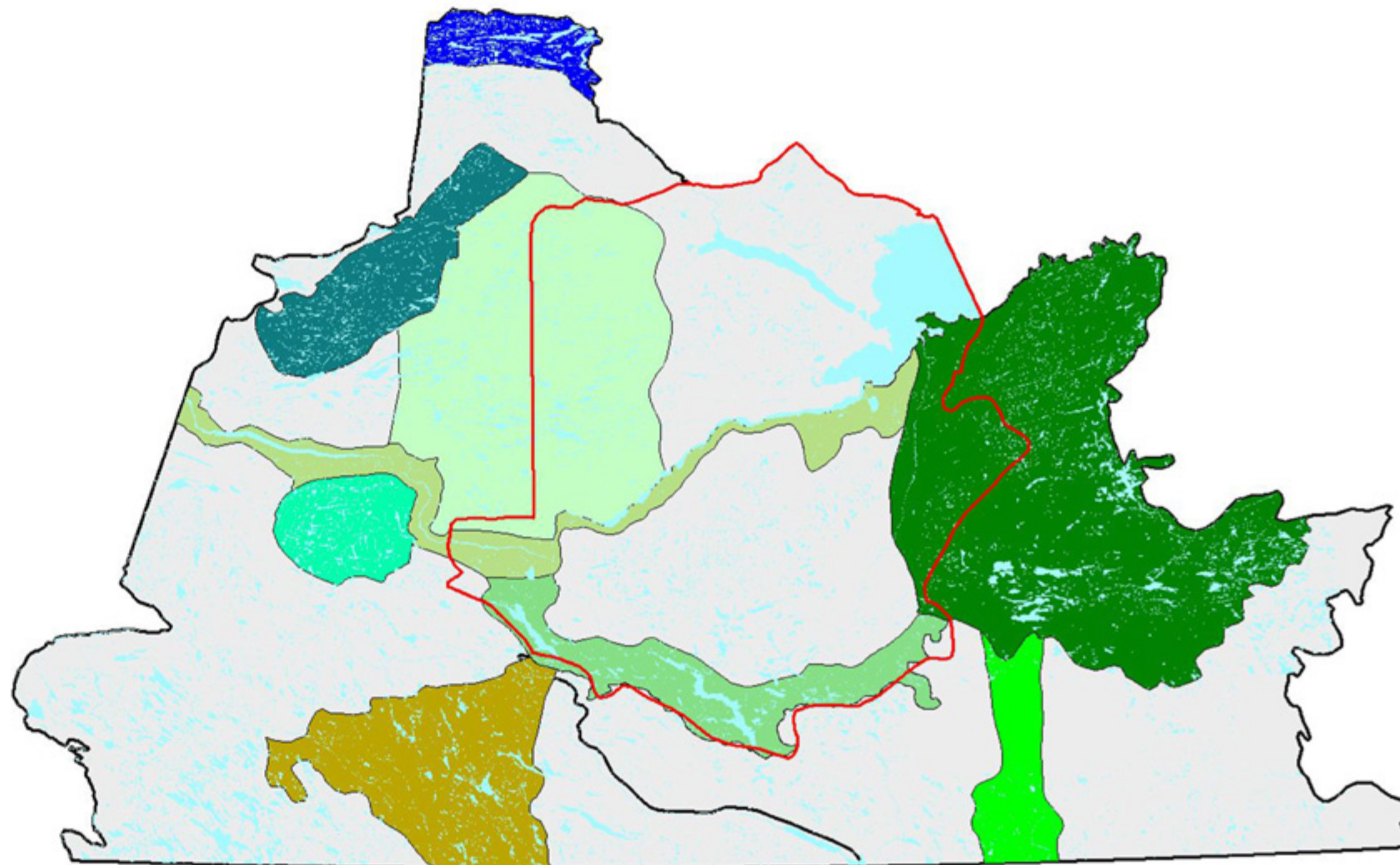


- District Boundary
- Roads
  - Paved Public
  - Unpaved Public
  - Resource Roads
  - ..... Trails and Extraction Roads
- Lakes
- Fires
- Past Cutovers

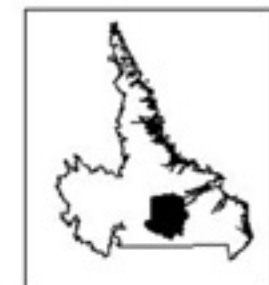


Created By : Deanne Gosling  
DFRA, Gov. of NF and Lab.  
Happy Valley-Goose Bay, Lab.  
Date : July 23, 2002  
Modified: N/A  
Projection: Transverse Mercator.  
Datum: NAD83  
Data Source: DFRA Forest Inventory Dataset.

# Map 7 District 19 Protected Area Network



-  District 19 A Boundary
- Initial Protected Area Network**
-  CR 1: Mealy Mountains National Park
-  CR 2: Seal Lake
-  CR 3: Red Wine Mountains
-  CR 4: Churchill River Uplands
-  CR 5: Complex Habitat Matrix
-  CR 6: Red Wine Caribou Reserve
-  Link 1: Churchill River
-  Link 2: Dominion Lake - Minipi Lake
-  Link 3: Eagle Plains - Quebec
-  Lakes




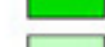
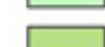





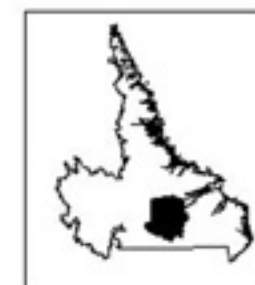
Created by: J. Forsyth, Innu Nation  
Date: October 4, 2002  
Projection: Transverse Mercator.  
Datum: NAD83  
Data Source: Silva Ecosystem Consultants



### Map 8: District 19A Ecological Protected Area Network



-  Core Reserve C - Waterfowl
-  Core Reserve B
-  Core Reserve 1 - MMNP
-  Core Reserve A
-  Core Reserve 6 - RWCR
-  Linkage 1 & 2
-  Linkage A
-  Lakes



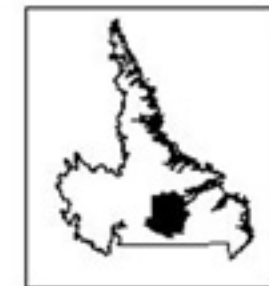
Created by: J. Forsyth, Innu Nation  
Date: October 4, 2002  
Projection: Transverse Mercator.  
Datum: NAD83  
Data Source: Silva Ecosystem Consultants, Innu Nation.



**Map 9: District 19A  
Cultural Protected Area Network**



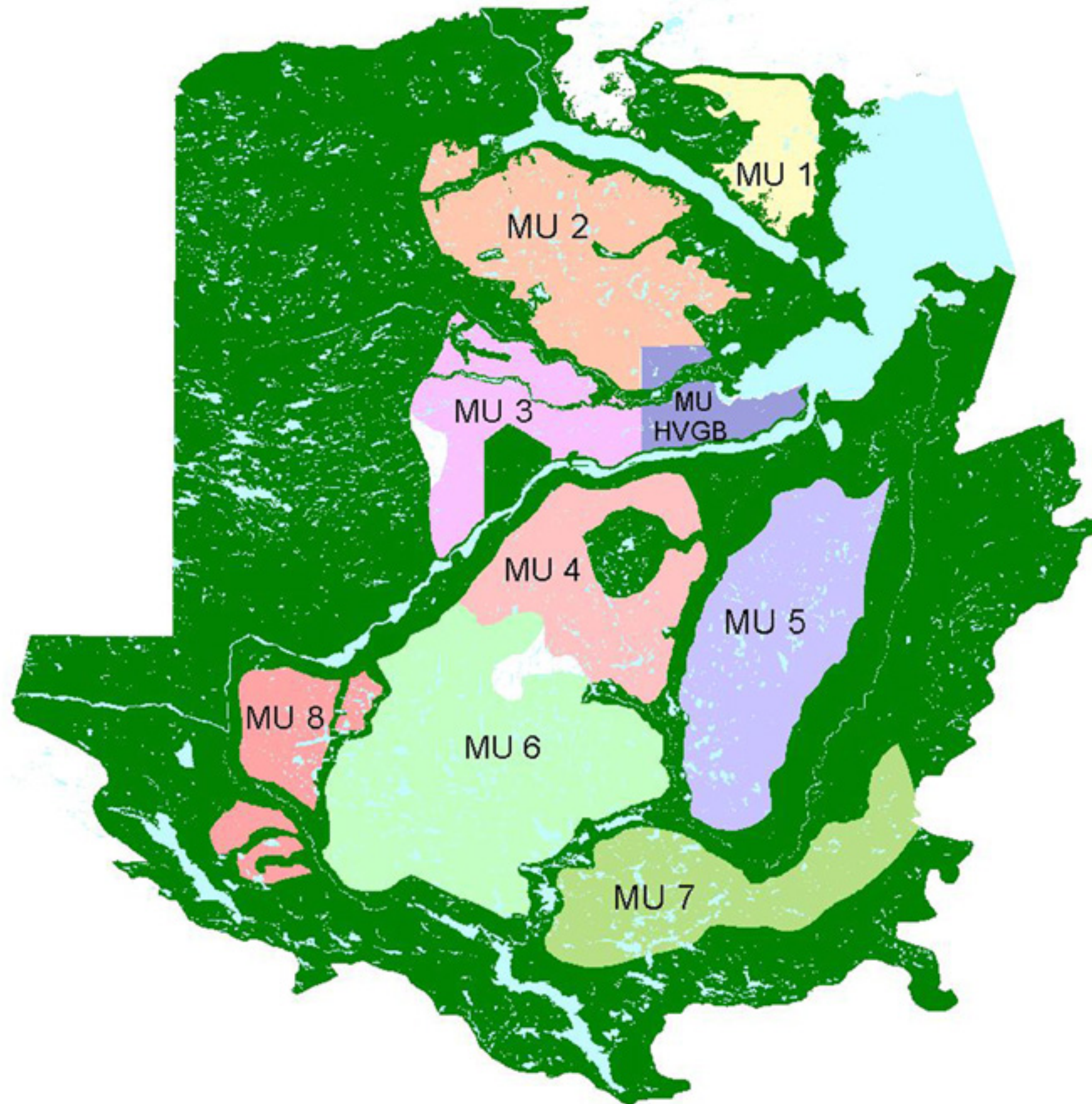
- District 19 A Boundary
- Grand Lake Viewshed
- Sensitive Cultural Areas
- Domestic Harvesting Reserves
- Crown Land Reserves
- Selective Harvest Reserve
- Lakes



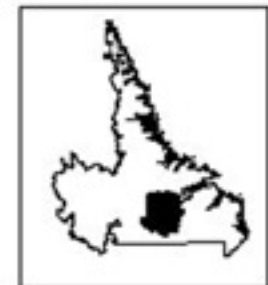
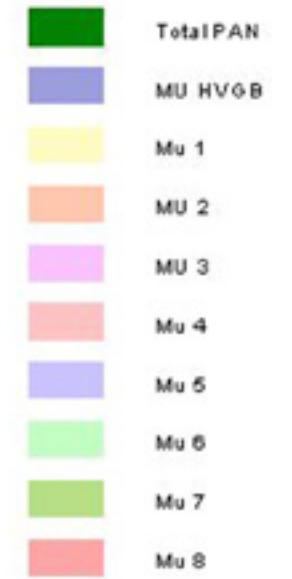
Created by: J. Forsyth, Innu Nation  
Date: October 4, 2002  
Projection: Transverse Mercator.  
Datum: NAD83  
Data Source: Innu Nation, DFRA, Crown Lands



**Map 10: District 19A  
Total Protected Area Network  
& Management Units**



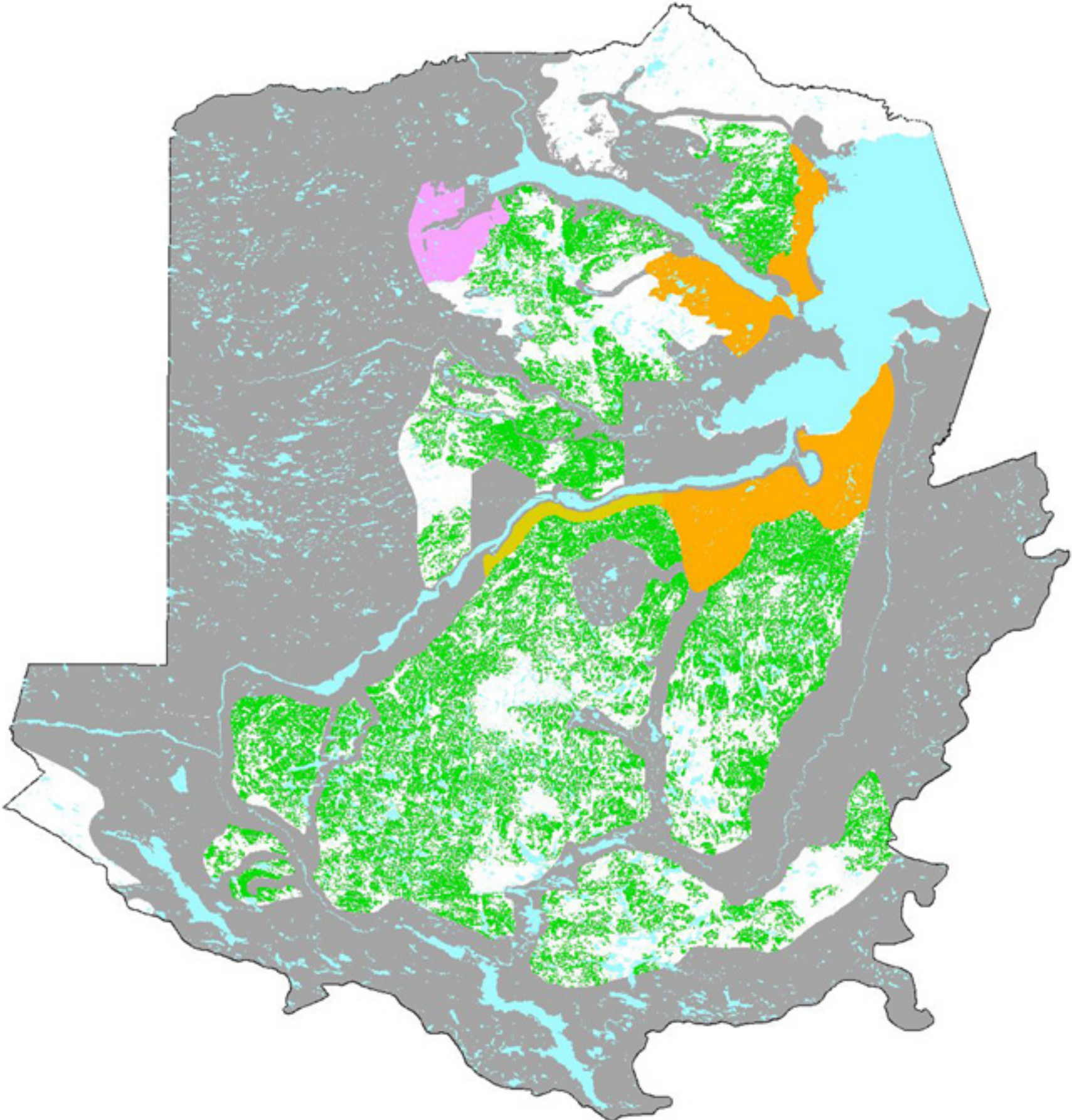
**FMD 19A Total PAN**



Created by: J. Forsyth, Innu Nation  
Date: October 4, 2002  
Projection: Transverse Mercator.  
Datum: NAD83  
Data Source: Maps 7-8



**Map 11: District 19A  
Forest Management Classifications**



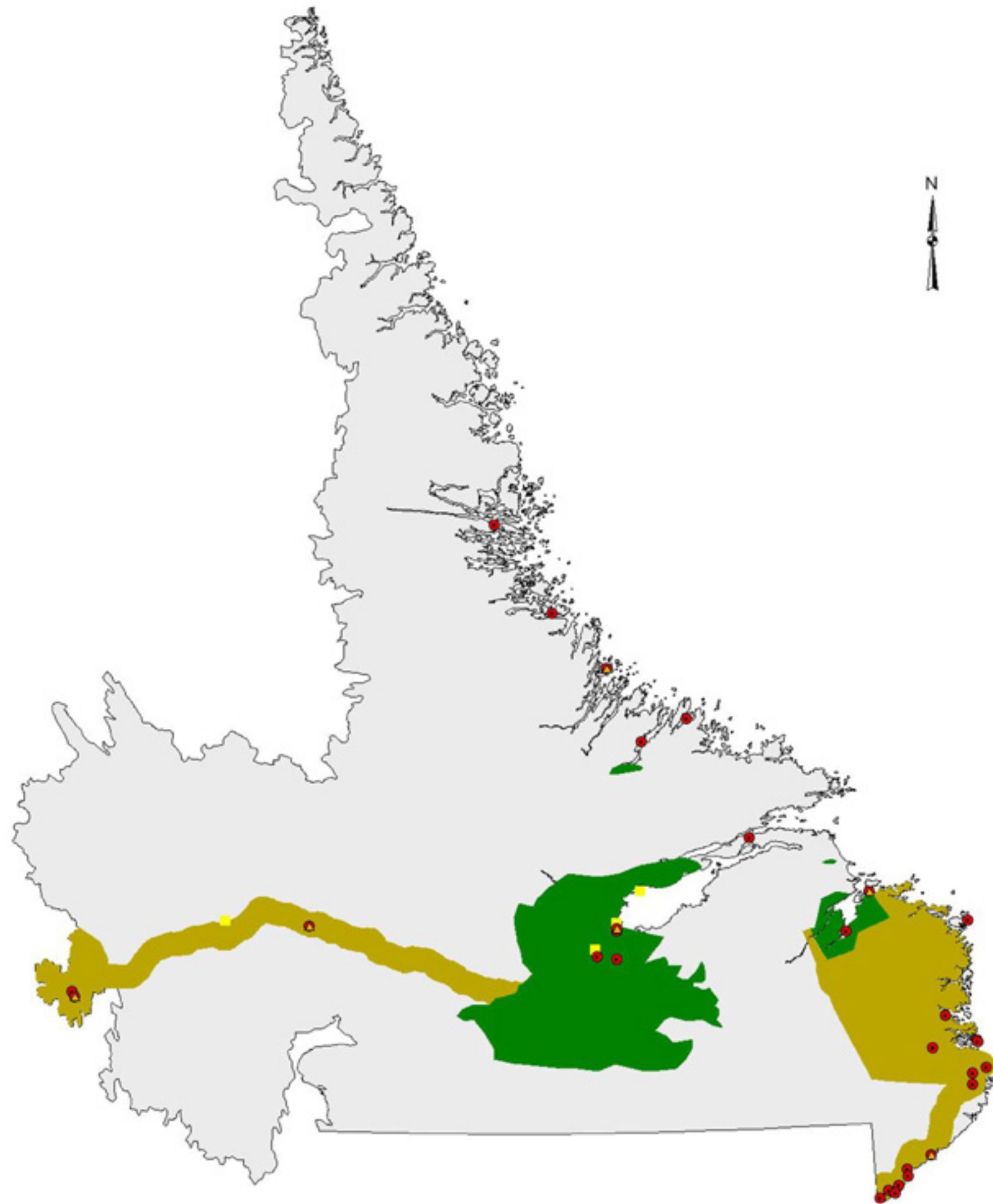
- District 19 A North Boundary
- Total Protected Area Network
- Domestic Reserves
- Selective Commercial Reserve
- Conservation Emphasis (Beaver River)
- Commercial Harvesting
- Lakes



Created by: J. Forsyth, Innu Nation  
Date: October 4, 2002  
Projection: Transverse Mercator.  
Datum: NAD83  
Data Source: Innu Nation, DFRA



**Map 12:  
Labrador Forest Fire Priority Zones**



- ▲ Forestry Depots
  - Communities
  - Public Areas
- Fire Priority Zones
- Other Areas
  - Timber Areas



Created By : Deanne Gouling  
DFRA, Gov. of NF and Lab.  
Happy Valley-Goose Bay, Lab.  
Date : July 23, 2002  
Modified: N/A  
Projection : Transverse Mercator.  
Datum : NAD83  
Data Source : DFRA Forest Inventory Dataset.