

Map A

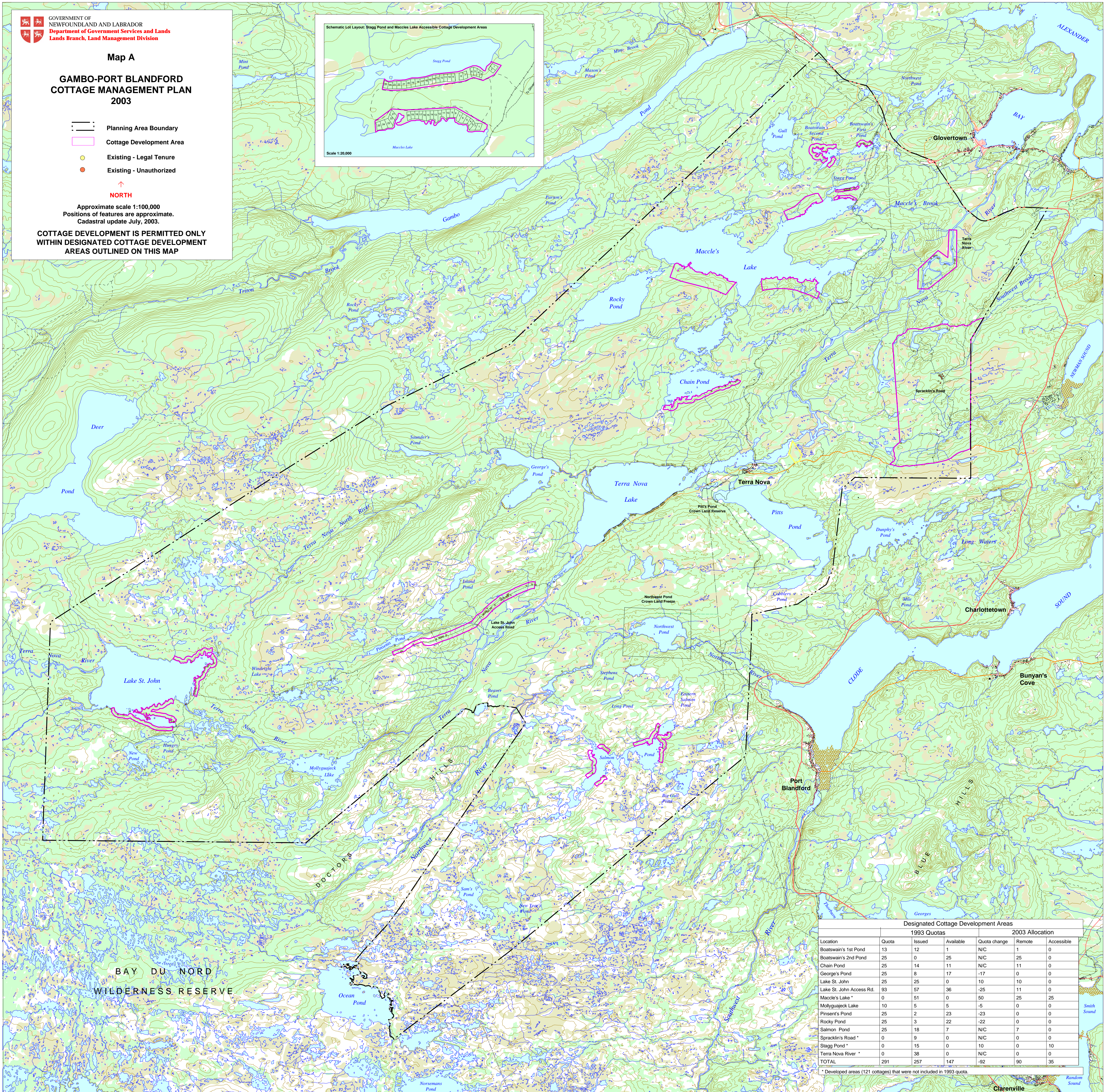
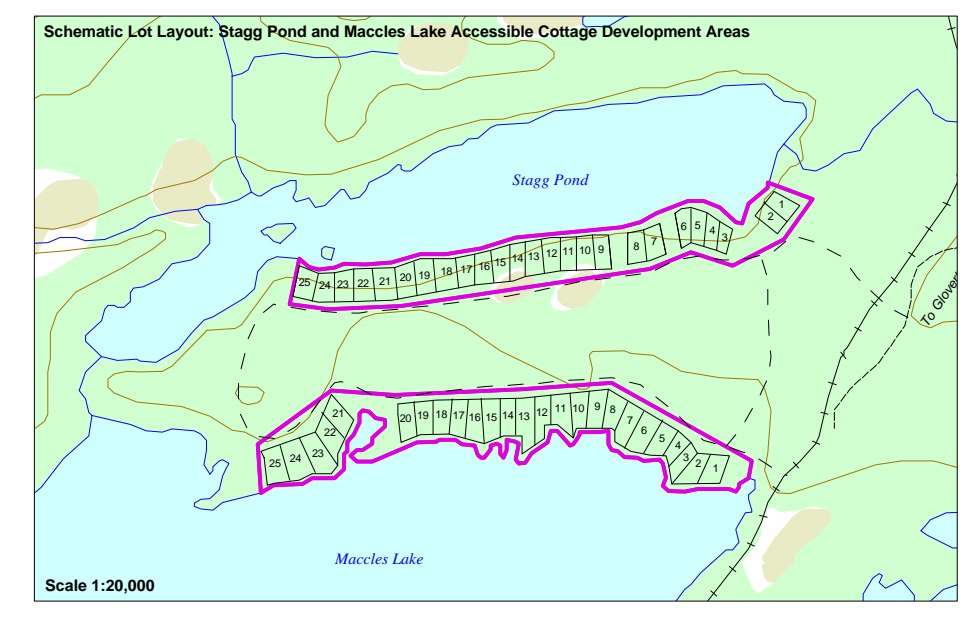
**GAMBO-PORT BLANDFORD
COTTAGE MANAGEMENT PLAN
2003**

- Planning Area Boundary
- Cottage Development Area
- Existing - Legal Tenure
- Existing - Unauthorized

NORTH

Approximate scale 1:100,000
Positions of features are approximate.
Cadastral update July, 2003.

**COTTAGE DEVELOPMENT IS PERMITTED ONLY
WITHIN DESIGNATED COTTAGE DEVELOPMENT
AREAS OUTLINED ON THIS MAP**



Location	1993 Quotas			2003 Allocation		
	Quota	Issued	Available	Quota change	Remote	Accessible
Boatswain's 1st Pond	13	1	1	N/C	1	0
Boatswain's 2nd Pond	25	0	25	N/C	25	0
Chain Pond	25	14	11	N/C	11	0
George's Pond	25	8	17	-17	0	0
Lake St. John	25	25	0	10	10	0
Lake St. John Access Rd.	93	57	36	-25	11	0
Macle's Lake *	0	51	0	50	25	25
Molyguck Lake	10	5	5	-5	0	0
Pisken's Pond	25	2	23	-23	0	0
Rocky Pond	25	3	22	-22	0	0
Salmon Pond	25	18	7	N/C	7	0
Spracklin's Road *	0	9	0	N/C	0	0
Stagg Pond *	0	15	0	10	0	10
Terra Nova River *	0	38	0	N/C	0	0
TOTAL	291	257	147	-92	90	35

* Developed areas (121 cottages) that were not included in 1993 quotas.