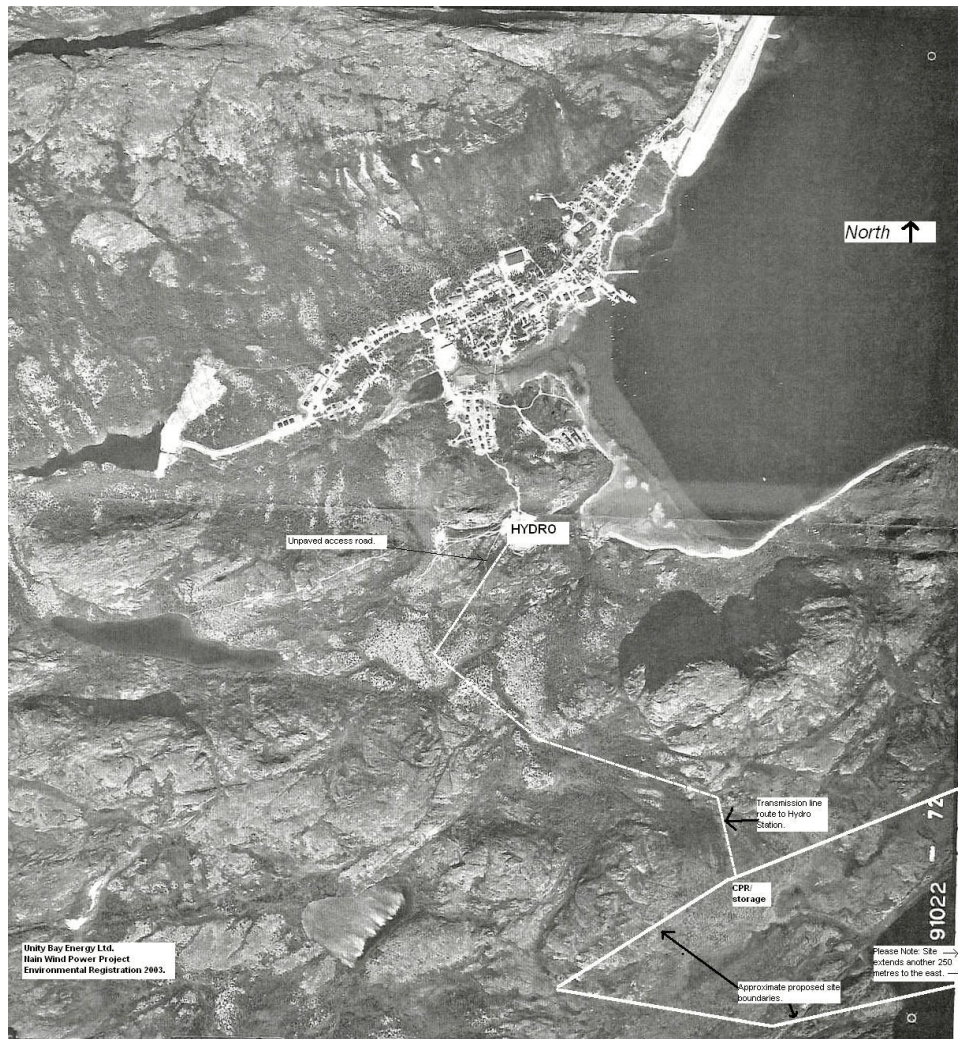


Aerial View of Proposed Wind Power Site



Please Note: 1) The Department of Government Services and Lands could not provide a complete colour aerial photo. As a result locations are approximate.

2) The proposed site actually continues to the right (east) for about another 250 metres (encompassing another 7 or 8 hectares) on the above map.

3) The Scale is 1:12,500

Figure #1
Colour Views of Site
“THE ENVIRONMENT”



North Facing Shot: Out towards Unity Bay (above).

North Facing Shot: Mossy overstory with quartz granite Bedrock (below).

