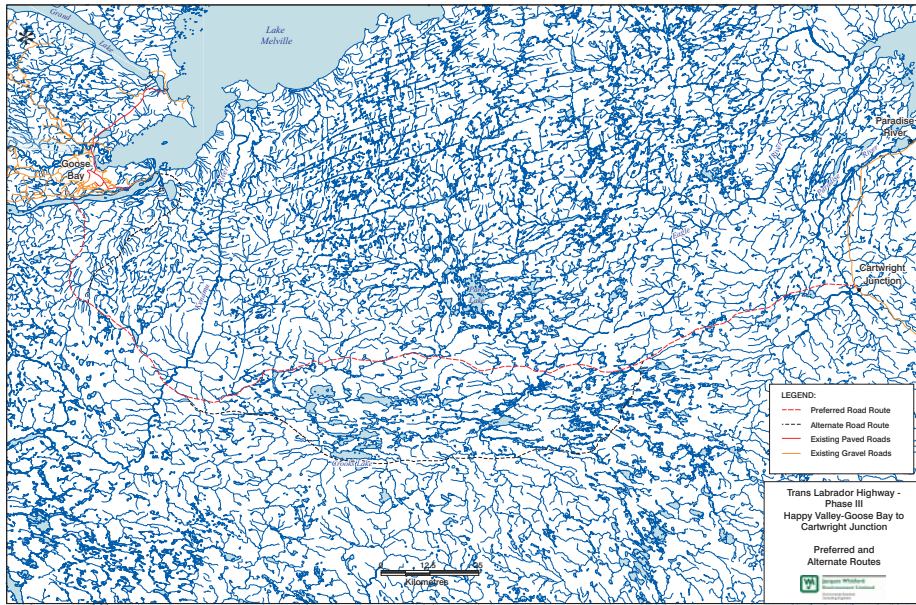


APPENDIX M

Open House - Story Boards

TRANS LABRADOR HIGHWAY - PHASE III (HAPPY VALLEY-GOOSE BAY TO CARTWRIGHT JUNCTION)



THE PROJECT

The Department of Works, Services and Transportation (DWST) is proposing to construct a 250 km highway between Happy Valley-Goose Bay and Cartwright Junction, Labrador.

This highway will complete the final link in an all-season, ground transportation route across Labrador.

- Trans Labrador Highway - Phase I (Western Labrador to Happy Valley-Goose Bay) completed in June 2000.
- Trans Labrador Highway - Phase II (Red Bay to Cartwright) scheduled for completion in December 2002.

Preferred Routing- Phase III

- Highway begins east of Muskrat Falls and crosses the Churchill River at Black Rocks about 9 km west of Hamilton Intersection in Happy Valley-Goose Bay.
- Then extends about 75 km to the southeast before turning to the northeast for a distance of 175 km to Cartwright Junction (87 km south of Cartwright).

Alternative Routing - Phase III

- Alternative 1 - Highway begins to the east of Happy Valley-Goose Bay with a bridge and causeway across the Churchill River at English Point, then extends southwest for about 50 km before joining the preferred route. Adds an extra 26 km to the preferred route.
- Alternative 2 - This is an alternative 144 km section of highway that begins about 67 km from the start of the preferred route, proceeds south of Crooke Lake and extends east to rejoin the preferred route. Adds an extra 18 km to the preferred route.



HIGHWAY DESIGN

Design similar to Trans Labrador Highway sections for Phases I and II.

Constructed to a Rural Collector Undivided standard.

Designed for a speed limit of 80 km/hr.

Posted speed limit of 70 km/hr.

40 m right-of-way.

Clearing width of 30 m (reduced, where possible, around watercourses).

Grubbing width of 20 m.

Surface width of 9.5 m.

Bridges and causeways at major river crossings.

Culverts and arch pipes at most watercourse crossings.

Highway signage will meet set standards.

Intersections designed according to Roads and Transportation Association of Canada standards and will meet turning standards for tractor trailers.

Detailed design and engineering are ongoing.



GOVERNMENT OF
NEWFOUNDLAND
AND LABRADOR
Department of
Works, Services and Transportation

PROJECT SCHEDULE

	2003	2004	2005	2006	2007	2008
PROJECT DESIGN & ENGINEERING	[Solid black bar]					
PERMITTING	[Bar]	[Bar]	[Bar]	[Bar]	[Bar]	[Bar]
PROCUREMENT	[Bar]	[Bar]	[Bar]	[Bar]	[Bar]	[Bar]
CONSTRUCTION PHASES	[Bar]	[Bar]	[Bar]	[Bar]	[Bar]	[Bar]
PROJECT COMPLETION						[Dot]

COMPLETED SECTION OF TRANS
LABRADOR HIGHWAY - PHASE II



CLEARED RIGHT-OF-WAY - PHASE II



GOVERNMENT OF
NEWFOUNDLAND
AND LABRADOR
Department of
Works, Services and Transportation

HIGHWAY CONSTRUCTION

Constructing Phase III of the Trans Labrador Highway will:

- start at both Happy Valley-Goose Bay and Cartwright Junction.
- occur between 2003 and 2008; and
- be conducted from mid-May to the end of November of each year.

Construction will involve:

- land surveying;
- right-of-way clearing;
- grubbing;
- subgrade construction;
- surface construction;
- watercourse crossing structures; and
- clean-up and rehabilitation.



CONSTRUCTION ACTIVITY



GOVERNMENT OF
NEWFOUNDLAND
AND LABRADOR

Department of
Works, Services and Transportation

HIGHWAY CONSTRUCTION

Laydown Areas

- Temporary site for storing construction materials and equipment.
- Some laydown areas may be used during operation as highway maintenance sites.
- Sites no longer required will be rehabilitated.

Borrow Pits

- Where possible, material will be taken from the right-of-way.
- If material must be obtained beyond the right-of-way, borrow pits will be established within a 2 km corridor.
- Borrow pits, not required during operation, will be rehabilitated.



ACTIVE BORROW PIT

Construction Camps

Temporary camps will have:

- a kitchen;
- bunkhouses to accommodate 40 people;
- shower facilities;
- an administration building; and
- properly installed and maintained sewage systems and regular waste disposal.



TYPICAL CONSTRUCTION CAMP

Camps will be dismantled and facilities moved to next site.

Each site will be rehabilitated.



GOVERNMENT OF
NEWFOUNDLAND
AND LABRADOR

Department of
Works, Services and Transportation

WATERCOURSE CROSSINGS

Approximately 100 watercourse crossings.

Most crossings will feature steel culvert pipes, arch pipes and multi-plate arch pipes (with or without bottoms). These structures will be designed to accommodate normal flow, storm drainage, snow melt and fish passage.

Bridges will be installed at major river crossings such as:

- Churchill River;
- Traverspine River;
- Kenamu River;
- Paradise River; and
- a tributary of the Eagle River.

All crossing and drainage structures will be designed to accommodate a minimum of 1:100 year flood events.

Watercourse crossings will be constructed in the dry with streams being temporarily diverted.

Approval under the *Navigable Waters Protection Act* will be obtained, where necessary.



CULVERT CROSSING



TEMPORARY BRIDGE ON THE GILBERT RIVER



BRIDGE AT MARY'S HARBOUR

ENVIRONMENTAL PROTECTION MEASURES

Follow provincial guidelines for work around watercourses and federal guidelines for work affecting fish and fish habitat.

Examine all watercourse crossings before construction and installing crossing structures.

Design and construct watercourse crossing structures in consultation with Department of Fisheries and Oceans representatives.

Design all watercourse crossings to meet 1:100 year flood criteria.

Design all watercourse crossings to allow fish migration.

Assess fish habitat in upstream and downstream areas.

Leave vegetation buffers around watercourses until immediately before installing crossing structures.

Construct all crossings in the dry with flow diverted around work areas.

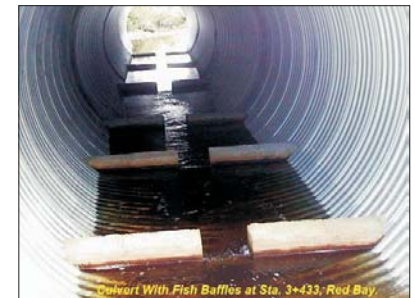
Apply erosion and scour protection measures at inlet and outlet control areas.



TEMPORARY BUFFER ZONE AT WATERCOURSE CROSSING



CULVERT INSTALLATION



FISH BAFFLES IN CULVERT



HIGHWAY OPERATION

The Trans Labrador Highway - Phase III will be a permanent, year-round highway.

Summer maintenance activities:

- grading;
- ditch cleaning;
- guide rail and sign repairs; and
- regular watercourse crossing and drainage structure inspection.



ROAD GRADING

Winter maintenance activities:

- snow clearing;
- ice control (with sand); and
- regular watercourse crossing and drainage structure inspection.



SNOW CLEARING

Maintenance depots:

- Equipment storage (graders, backhoes, front-end loaders, trucks and snow plows).
- Determine appropriate locations during construction.
- Need good source of aggregate materials or sand near depot site.



SAND STORAGE SHED



ENVIRONMENTAL MANAGEMENT

Follow all federal and provincial regulatory requirements.

Follow DWST environmental specifications.

Prepare an Environmental Protection Plan.

Project environmental surveillance officer.

Conduct environmental awareness sessions for all DWST, contractor and subcontractor employees.

Conduct environmental compliance monitoring.

Rehabilitate all camp, laydown and borrow sites not required during operation.



GRADED BORROW PIT



ENVIRONMENTAL STUDIES

Historic Resources

- Document Aboriginal and non-Aboriginal historic resources along the route.
- Conduct an archaeological investigation along the highway route to assess the potential for locating archaeological sites.



OLD TILT SITE



ARCHAEOLOGY FIELD SURVEY

Resource Use and Users

- Document contemporary Aboriginal and non-Aboriginal land and resource use.
- Identify proposed or potential future changes in land and resource use activities and patterns.
- Describe the regulatory framework for land and resource use.
- Interview Innu elders, government officials and other stakeholders.



FISHING ON TOM LUSCOMBES BROOK

Waterfowl and Raptors

- Conduct five waterfowl surveys covering breeding, broods, molting and fall staging.
- Two of the five surveys will focus on Harlequin duck.
- Conduct breeding raptor survey.

Rare Plants

- Conduct a predictive modelling exercise to determine potential areas for encountering rare plants along the highway route.
- Conduct a field investigation of high potential areas for rare plants prior to construction.



ENVIRONMENTAL STUDIES

Fish and Fish Habitat

- Describe fish habitat in watercourse crossings along the highway route.
- Identify fish species found in watercourses along the highway route.
- Determine baseline water quality (temperature, pH, conductivity, dissolved oxygen, total dissolved solids, metals, alkalinity and turbidity).



OUANANICHE

Caribou

- Conduct field study of caribou populations along the highway route.



GEORGE RIVER CARIBOU

Acid Generating Rock

- Conduct a review of available geological mapping to determine potential areas for encountering acid generating rocks along the highway route.
- Conduct a field investigation of high potential areas for acid generating rocks prior to construction.



ENVIRONMENTAL ASSESSMENT

The environmental assessment for the Trans Labrador Highway - Phase III (Happy Valley-Goose Bay to Cartwright Junction) Project must address requirements of the:

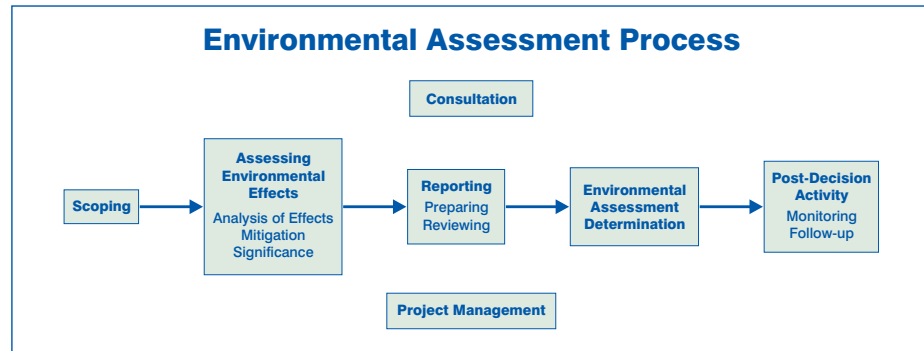
Newfoundland and Labrador *Environmental Protection Act*; and
Canadian Environmental Assessment Act.

Project registered with the provincial Department of Environment on April 3, 2002.

Environmental Impact Statement requirement issued on June 19, 2002.

Environmental Assessment Committee, with representatives of both provincial and federal government departments and agencies, was appointed June 2002.

The purpose of the environmental assessment is to identify the potential environmental and socio-economic effects associated with the highway development.



ISSUE SCOPING AND STAKEHOLDER CONSULTATION

Four open houses are being held to inform the public about the project, and identify issues and concerns.

Consultation with Aboriginal peoples and organizations.

Consultation with municipal councils, and business and economic development organizations.

Consultation with regulatory agencies and departments.

Issues and concerns identified by all stakeholders will be used to focus the environmental assessment.

Preliminary subjects identified to date:

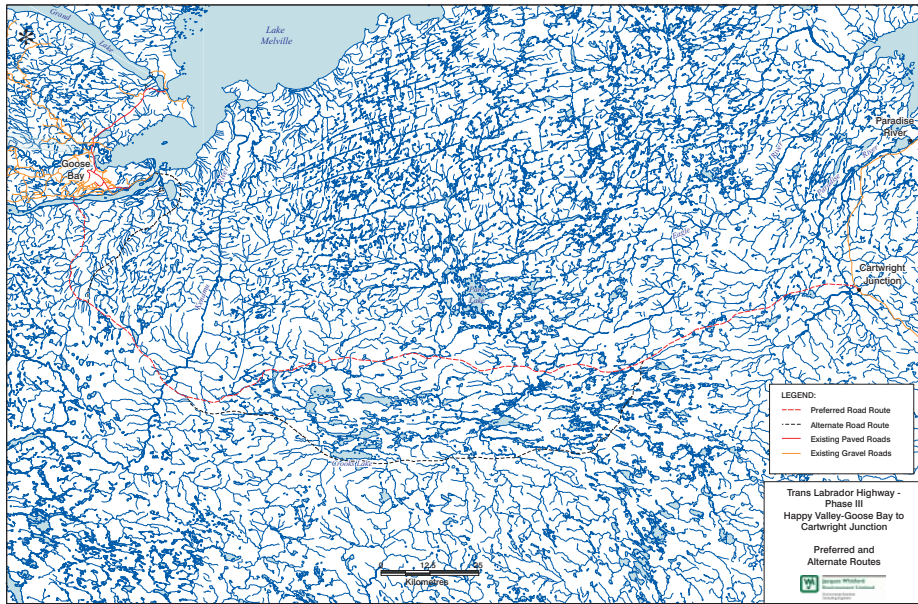
- geology and geomorphology;
- wetlands;
- water resources;
- caribou;
- furbearers;
- migratory birds and raptors;
- fish and fish habitat;
- species at risk;
- historic resources;
- resource use and users;
- proposed Mealy Mountain National Park;
- tourism and recreation; and
- employment and business.



This preliminary list will be refined as the environmental assessment progresses.



MISTA PAUSHTUK MESHKINAU - KUTAK TSHETUTAKANT - PHASE III (UTE UT APIPANI MAK NETE ISHPISH NUTAPINEUANT)



NE ATUSSEUN

Ntshent Department of Works, Services and Transportation (Meshkinanu kaitushkatak) nantuenitamut tshetshi tutak meshkinanu nete ut Apipani mak nete ishpish Nutapineuant ute tshitassiat. Umue meshkinau tshetutakant eukuan mashten tshe itushkatet nuash tshent tshishtakant. Nete Nutapineuant tsheitamut kie skinapuna tshika apishtakanu ume meshkinau uta tshitassiat.

Umue meshkinau kassinu tshetshistakant katshitshipinanut shashish. Umue tshe tikuak nte kassinu tsheitamut nte Labrador.

- Miste paushtuk meshkinau katshitshipinanut shashish nete pet Uapush nuash ute Apipani. Umue meshkinau tshistanipan Uapukun Pishum katshistauat 2000 miste tshitashun.
- Minuat kutak meshkinau tshiatshipinanut nete uet Red Bay kaishinikaket utenau nuash nete Nutapineuant. Umue meshkinau tshetshistakant Pishumussa anutshish 2002 miste tshitashun.

Eukuan umue eshituenitakant tshetshi itamut meshkinau - Phase III

- Ute Mintutshu tshetshitshipant meshkinau nuash tshent tutakant nta Mista paustukut shipit uta ut Black Rocks keishinikateua. Nete ishpish ntamint Apipani meshkinau keitamua.
- Nte tshet ishiueuestakant meshkanau nete ut mammit nuash tshet nete ishpinanut mammit Nutapineuant.

Kie ma umue tshipa itamutakanu meshkinau - Phase III

- Put tshipa ishinakun 1 - uta tshipa tshitshipinanu meshkinau nta ut mammit Apipani nuash tshipa tutakanu ashukan nta Mista paustukut shipit nta English Point. Tshetshet ne meshkinau tshipa tapitin nete nitamit tshepimimut meshkinau. Etu minekashish ume meshkinau nika itishikenan maka neme kutak meshkinau itimut.
- Put tshipa ishinakun minuat kutak meshkinau 2 - Umue kutak tshipa itimu meshkinau. Nete tshipa tshitshapinu nete ushkat kauaitakant tshetshi tutikant meshkinu. Minuat nete tshipa utitikanu ne Crooke Lake tshet nete mammit . Etu iat minekashish tshipa nustakanu ume meshkinu.

MESHKINAU TSHEISHINAKUAK

Miam ne Mista paustuk meshkinau tsheishinakuak nete kauaitakant Phase I mak Phase II.

Ne meshkinau tshetutakant nika nashatenan Tshisheutshimau kaishinantuenitak meshkinanu Rural Collector Undivided.

Tshika muk Nishuaush tatunu (80)km/hr ishpish tshishapintan

Nishuass tatunu (70)km/hr muk tshika iteshteu tshitshe tshishipantain utapan.

Neunu (40)m tshiminikun tshe pimpintain nte episseshimut meshkinau.

Tshika tuashkueikanu nete eminashkuaut miam nte pessish etukuak nipi nte meshkinat.

Tshika munetshenanu nte assit 20 m tshetshi utinikant assi

Tshika iat enakastet 9.5 m nte ussit meshkinau.

Uasteniman meshkinau tshika iat takuana tshetshi kassinu auen nashatak

Kassinu umue tsheishinakuak meshkinau nika nashatenan ne eshitapuetak tshisheutshimau kaishinikatakant Roads and Transportation Association of Canada. Iat kamamamishantshi utapana nika minutanen meshkinanu tshetshi papinikau.

Eshku anutshish uauitakanu tshipa etitu ishinakun meshkinau



ATUSSEUN TSHEISHPISH TSHATSHISTAKANU

	2003	2004	2005	2006	2007	2008
ATUSSEUN TSHEISHINAKUAK KIE TSHEISHITUTAKANT	[Solid black bar]					
TAPUETAKANTSHI	[Bar]	[Bar]	[Bar]	[Bar]	[Bar]	[Bar]
TSHEKUAN TSHENASHATIAKANT TSHETSHI TSHISTAKANT	[Bar]	[Bar]	[Bar]	[Bar]	[Bar]	[Bar]
TSHEISHITUSSENANUT KIE TANTA TIANANUT	[Bar]	[Bar]	[Bar]	[Bar]	[Bar]	[Bar]
UTA TSHIPA TSHISTAKANU						[Dot]



ESHINAKUAK MISTA PAUSTUK MESHKINAU KATSHISTAKANT - PHASE II



KATUASSEKEIKANT NTE TSHEPISSESHIMUT MESHKINAU - PHASE II



MESHKINAU TSHEISHIUEUESTAKANT

Ne tsheishiueuestakant meshkinau

- Uta Apipani tshika tshitshipinu mak nete ut tapitik Nutapineuant meshkinau.
- Ute tshipa tshitshipinanu 2003 mak nete ishpish 2008 mistei tshitashun
- nete tshipa tshitshipinanu eueuestakant meshkinau eshukum pupun tetaut Nissi- pishum mak nete ishpish skuaiet Takuatshipishum.

Tshekuan tsheitapishtakant meshkinau ueueshtakantshi:

- assi kantussenitakant
- tshika tuassekeikanu tshetshi pisseshimut meshkinau
- tshika muneitshenau
- assi tshika pikuekanu
- ussat assit tshika ueueshtakanu
- tshika tutakanua ashukana; mak
- tshika nekakinu assi kie kau kaishinakuak ne assi tshika kau ueuestakanu



KAITUSSENANUT TSHEISHINAKUAK



GOVERNMENT OF
NEWFOUNDLAND
AND LABRADOR

Department of
Works, Services and Transportation

MESHKINAU TSHEISHIUEUESTAKANT

Nte tsheistashunanut

- Uenipissish tshika itapistkanu miam istashutshuap. Atusseuana tshikaistakanua.
- Pisse tshika itapistakanua tshetshi ituskakanit meshkinaua
- tshika nekakinu kau assi tshishiapistakantshi

Kaiuiashunanut nekau kie assi kamuneikant

- Minuatshi tshika utinikanu ne nekau kie assi nte episseshimut meshkinau
- Utinakantshi nekau kie assi nte episseshimut kataku nika utinenan
- Kaiuiashunanut nte nekau kie assi tshishiapistakantshi kau tshika nekakinu



ESHINAKUAK NTE TSHEIUIASHUNANUT
NEKAU KIE ASSI

Kaitusset kaitshit kie kanipant

Umuenu tsheishikunentak kaitusset nte tsheuitshit:

- Kamishunanut
- Kanishukutet nipeuna tshetshi nipat neunu kaitusset
- Kastapuntishunanut
- Atusseun mashineikantshuap; mak
- Kakutautshikutshi matshissiuk kie kaneikuant mitshiskapeu



NTE TSHETAT KIE TSHEUITSHIT KAITUSSET

Mitshuapa tshika mineikanua tshishiapistakantshi mak kau tshika tshimitakanua nte minuat tsheitussenanut.

Kau kassinu tshika nekakinu tshekuan tshishiapistakantshi



GOVERNMENT OF
NEWFOUNDLAND
AND LABRADOR

Department of
Works, Services and Transportation

SHIPUA TSHE TAKUAKI ASHUKANA

Peikutamintinu itatinutshen nipia kie ma shipua tshe ueuestaiat.

Mitshet nika apistanan assikuman kutuskueu nte shipa meshkinant kesteue tshetshi minu pimpant nipi. Tshetshi ka nissipet nipi nte pupunit kie tshetshi minu pamipanit nameshat kie tshetshi minu pamipant shipu.



NE UAPINEKAU ASHUKAN TSHETUKUAK SHIPIT

Ashukana tshika tutakanua ante meshikamat shipu kie nipi miam mate:

- Mista paustuk
- Uapush shipiss
- Tshenuame shipu
- Paradise Shipu
- etukuatuepintshi Nutapineuant shipu

Kassinu ashukana tshika tshi shakutaut tshetshi ishinauaki tshetshi nissipenit shipunu.



UENIPISSISH ASHUKAN APISTAKANU UTE GILBERT SHIPIT

Nte tshika tshimitakanu ashukana nte nasht epakuat nipi eku tshika tutakinu nte tsheshpint nte shipiss nte iat patush ne tshistakantshi ashukan.



ASHUKAN NETE MARY'S HARBOUR

Ne tapuetakau Navigable Waters Protection Act keishinikatakanutshent nika uitumuanant tsheshinakunit. Uinuau tshika tshissenitamut tante menuanit tshetshi tutakanit nenu shipunu.



ASSINU KATSHISPEUATAK TSHENASHATIMAT

Nika nashatimuanan Tshisheutshimau kaissishuet tshetshi nakatuatikanit shipissa kie

Tshisheutshimau kaissishuet tshetshi nakatuapamakantshi namesha kie nte namesha kainiunt

Tshika nantussenitakanua kassinu shipua eshku eka tshimitakantshi ashukana

Nika uitumuanant kie kukuetschimanant Tshisheutshimau ukakusseushima kanakatuenimat namesha, ntshent kaishinikatakanit Department of Fisheries and Oceans.

Kassinu nika tutenan ashukana tshetshishutshikapunikau. Tshetshika nissipet shipu.

Nutam ashukana nika tutenan tshetshi minu pampinit nameshat.

Tshika nantussenitakanua nte kainiuit nameshat.

Apu tshikut nustaiat nenua uapukuna nipit katukunue pita patush nasht ui tshimitakantshi ashukan.

Nte tshika tshimitakanu ashukana nte nasht epakuat nipi eku tshika tutakinu nte tsheshpint nte shipiss nte iat patush ne tshistakantshi ashukan.

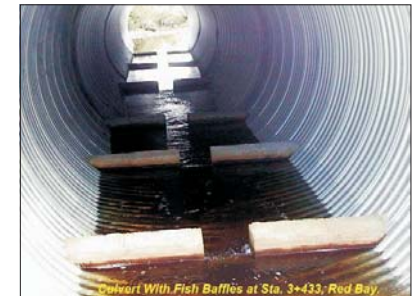
Tshikanekakinu nipi kie shipiss nte pet unuitshikut ashukant



UENIPISSISH TSHEISHINAKUAK SHIPU ESHKU EKA TUTAKANT ASHUKAN



NE ASSIKUMAN ASHUKAN TSHEI APISTAKANT UEUESTAKANTSHI SHIPU



NE TSHETIKUAK TSHENITUSSENIMAKANIT NAMESHIT NTE ASHUKANT



MESHKINAU TSHETSHI TSHIPINANUT ETUTAKANT

Ne Apipani meshkinau tshika tshitshipinu tshet nete ut tapitik Nutapineuant meshkinau. Nutapineuant meshkinau -kaishinikatet tshika shenikanu nantam skenupuna.

Umue tsheishitussenanut nipaki:

- Tshika kaskekinu
- Kamunekant assi tshika neikekanu
- Assikuman tshika tshimitakanua aitu nte meshkinant
- Tshika mintussenitakanu nantam ashukana tshetshi ma minupunikue ante shipissit katutakantshi



NEKAU KASKEKINU

Umue tsheishitussenanut pupuaki:

- Tshika uepauakinu kun nantam
- Tshika nenekateu meshkinau
- Tshika mintussenitakanu nantam ashukana tshetshi ma minupunikue ante shipissit katutakantshi



KUN UEPAUAKINU

Atusseutshuapa kaistashunanutshi:

- Atusseuana tshika istakanua miam ate kashutshishit kie kauepauat akuna
- Eukun umuenua mitshuapa tshessenitamat tante minuat nipa ituskatenan meshkinau
- Nika ui mamustanan tshekuan nte kamitshuapua mak nekau ekute tsheistakant



NEKAU TSHEISTET



UTSHIMAUT KANAKITUATAK ASSINU

Kassinu tshika nakatuenitamut tshekuanu Tshisheutshimau kaitistantshi mashineikanu

Nikaui nashatenen ne utshimau kaishituentak meshkinanu tshetshi ishinakuanit ne utshimau kaishinikatakant, Department of Works, Services and Transportation.

Nika uiuaitenan ne assi tshipa ishinakituatakanu

Tshika tau utshimau auen tshenakituatak assinu

Kassinu tshika uauitumuakanut assinu espitentakunit nutam kaitusset kie tshent kaituskuat Tshisheutshimau

Tshika nakituapamakanut nutam kaitusset tshetshi nashatak utitisseunuau

Nutam tshika neikakinu kaiapistakant assi tshishiapistakantshi



NTE KAUTINIKANT NEKAU TSHIKA MINUTAKANU KAU



ASSI TSHENTUSSENITAKANT

Shashish tshekuan katukuak assit, kie mishtukut, kie ashinit

- Nutam tshika mishinatekeikanu tshekuan meskakant nte eitapistat Innu kie akinishau nte pet shashish
- Tshika nantussenitakanu nte meshkinau tutakantshi tante tekuaki passe shashish Innut kauitshit



SHASHISH UITSHISHIN AUEN



KANANTUSSENITAK ASSINU TSHETSHIMA
SHASHISH UITSHINANUKUE

Tan etapishtakant assi kie auentshent iapishtant nenu assinu

- Tshika mishinatekeikanu kassinu tshekuan meshkakant nte assit
- Tshika uitakanu tan tsheishinakuak ne assi tshistakantshi ne meshkinau
- Nika uauitenan tshekuan ninashatetan umue uatutimat assi kie kaietapishtakant tshekuan nte assit
- Nika uapimanant kie emianant tshishenut kie Tshisheu-tshimau ukakusseshima kie katipentak atusseuna



KUSSESHIPIN AUEN NTE
TOM LUSCOMBES BROOK

Shishipit, nishkat, muakut, mitshishut

- Pitetat tshika itatinua tsheishentussenimakanit ntshent ueshishat
- Nenua nish tshitshue tshenitussenimakanit ne Harlequin shipship keishinikatakanua
- Tshika nantussenimakanut miam piniauetau

Uapukun kakashuk nitautinikau ute

- Nika nantussenitenan tante tshipa takuna nenua uapukuna kakashuk nitautshinikau ute.
- Nika nantuatenan nenua uapukuna eshku eka tutimat nte meshkinau



ASSI TSHENTUSSENITAKANT

Nameshat kie nte kainiuit

- Nika tshissentenan tante etat nameshat nete miam uatutimat meshkinau
- Nika tshissenimanant tshekun nameshat nte etat shipit nete miam uatutamat meshkinau
- Nikau nantussenitenan tan eshpish tshishakamatet nipi kie eshpish tatshikamut



OUANANICHE

Attikut

- Nika nantussenimanant tanetishit attikut nete miam uatutikant meshkinau



GEORGE RIVER ATTIKUT

Natukun kamitshikaut ashinit kantautshik

- Tshika nantussenitakanu tante tekuak ne natukun kamitshikaut ashini ante miam uatutakant meshkinau
- Tshika nantuatikanu ne ashini tante tshitshue tshipa tikun ne kamitshikaut natukun



ASSI KANANTUSSENITAKANT

Ne kanantussenitak assinu nenu uatutakanit ussi meshkinanut nete ut Apipani mak nete ishpih Nutapineuant tshika nashatimut umuenu Tshisheutshimaua kaitikut ne eshinikatakanit mate:

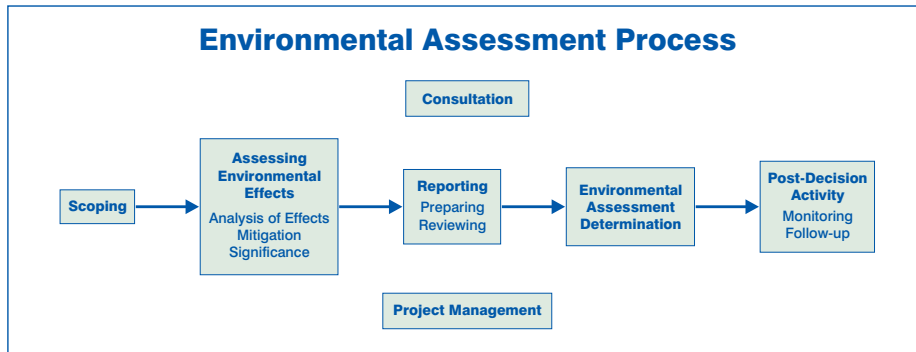
- *Newfoundland and Labrador Environment Protection Act*; mak
- *Canadian Environmental Assessment Act*.

Umue atusseun ne tshika nustaut iat Tshisheutshimau assinu kanustat ne ishinikatakanu Department of Environment eukune uinant nta Shiship Pishum nisht etshistauant 2002 miste tshitashun.

Ne mashineikan kauaitan assi tan tshipa ispinu unuipanipan nta Uapukun Pishum 19 2002 miste tshitashun.

Ntshent kantussenitak assinu kaitusset utinikupant Tshisheu-tshimaua nta Uapukun Pishuma 2002 miste tshitashun

Umue kuet nantussenitakant assi tan eshi pikunikant kie ma tan eshi uitshitshit auen umue uatutamat meshkinau.



TSHEISHINANTUSSENITAKANT UMUE ATUSSEUN KIE TSHIKA UITUMUAKANUT UTSHIMAUT

Nikashenenan neu mitshuapa tshetshi uitumuakanit kassinu auentshent ne atusseun meshkinau tshetutakant kie tshetshi petuakanit kassinu auen tan etentakau

Tshika uaitumuakanut kassinu Innut kie nenua umishinekantshuapuau

Tshika uaitumuakanut kassinu utshimaut ante akinishat tetshe

Tshika uaitumuakanut kaitusset akinishaut

Tshika uaitumuakanut ntshent utshimaut katapuetak tshekuanu eshku eka tshitshipinanut

Eukun umuenua ushkat tsheuaitakanitshi anutshish:

- ashinia kie tan tshe ishinakuak ashinia nte aishkat
- messekua
- shipua, nipi kie shakeikana
- attikut
- mashkut, utshishkut, atshukut, matsheshut, meikanit

- shishipit, niskat, muakut, mitshishut
- nameshat kie nte uet iniuit
- aeshishat ntshent kakatshi iniuit manekash
- shashish kaitapishtakant assi, kie mishtukua, kie ashini
- tan etapishtakant assi kie auentshent iapishtant nenu assinu

- ne kauaitakant tshetshi tutakant tshekuan nete Tshenuameshipit
- kapamipanit kie kauauatakau tshekuanu ntshent akinishaut; mak
- atusseuna tshetshitshipinikau



Umuenua tsheuaitakantshi passe tshekuan muk tshipa tshi atinikanua mekuat etuskatet meshkinau

