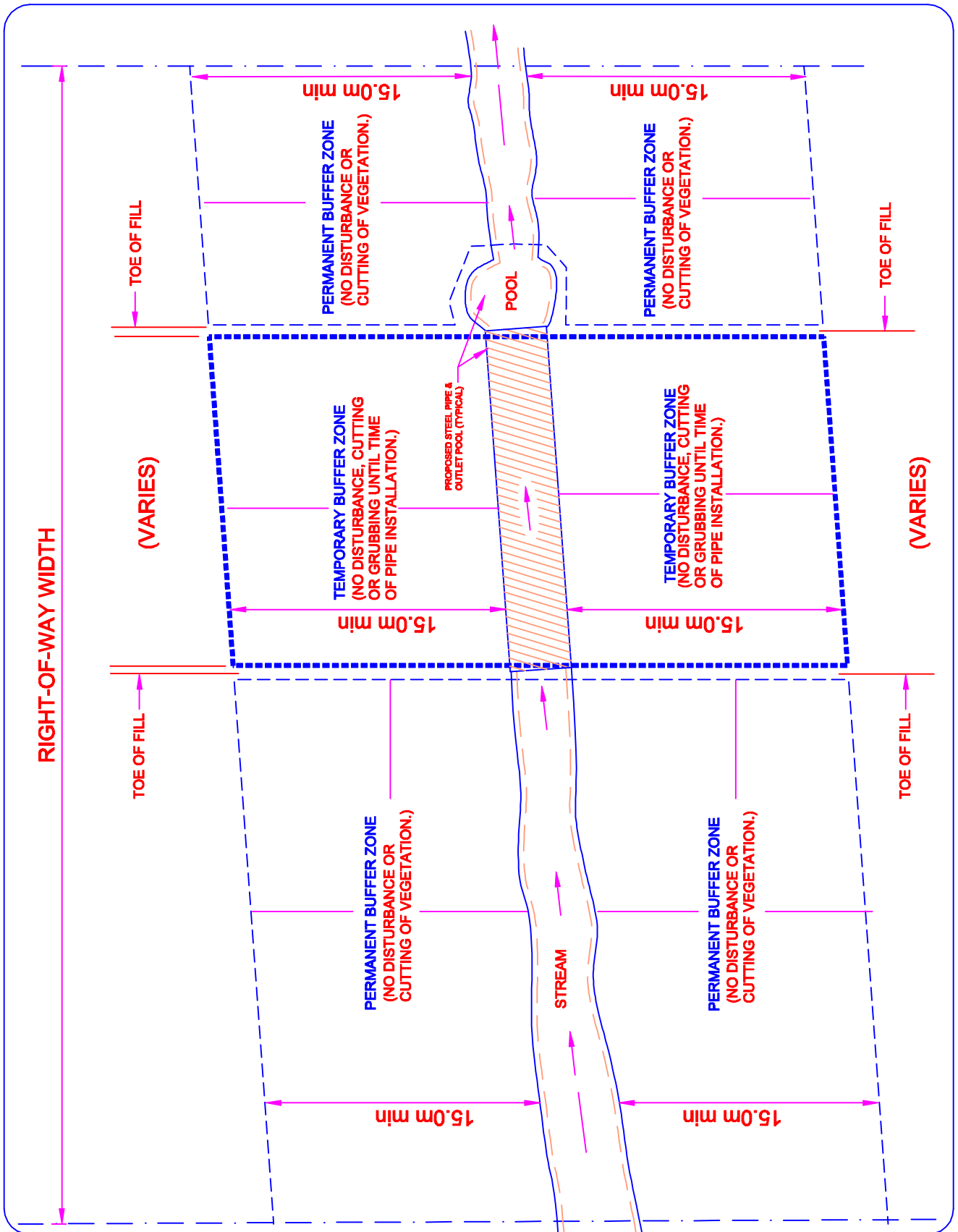


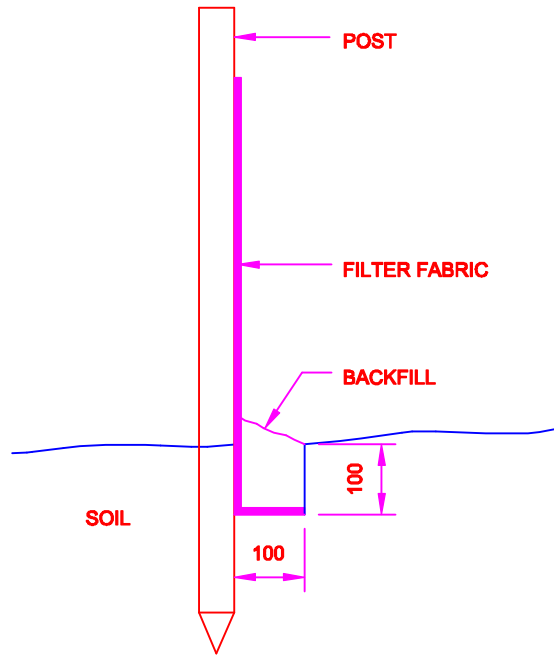

 GOVERNMENT OF NEWFOUNDLAND AND LABRADOR
 DEPARTMENT OF WORKS,
 SERVICES AND TRANSPORTATION
 HIGHWAY DESIGN DIVISION

CHECK DAM SEDIMENT TRAP

DRAWN BY: J. ROBERTS	DATE: REV 02-01-10	SCALE: N.T.S.
----------------------	--------------------	---------------



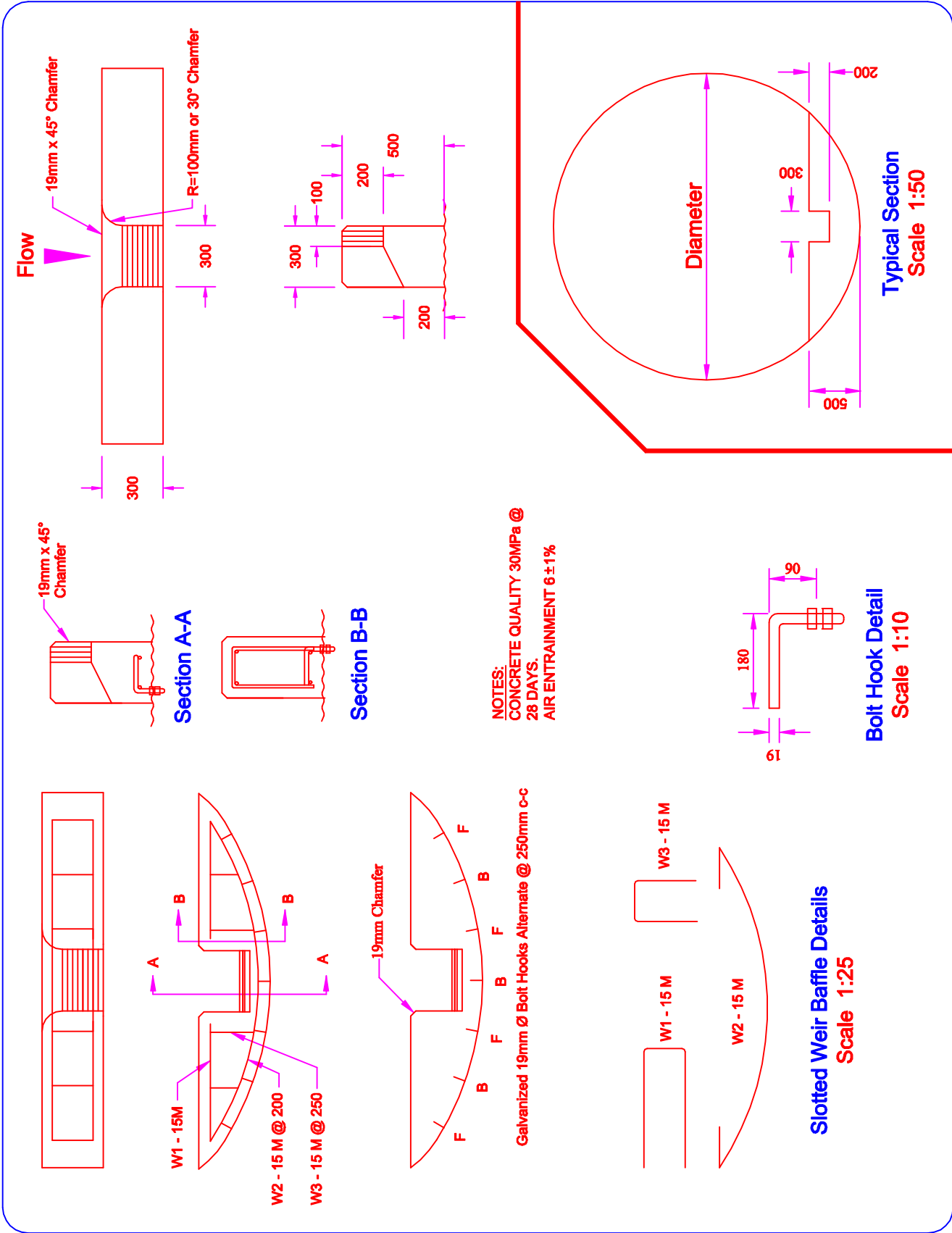
<p>GOVERNMENT OF NEWFOUNDLAND AND LABRADOR DEPARTMENT OF WORKS, SERVICES AND TRANSPORTATION HIGHWAY DESIGN DIVISION</p>	<p>TYPICAL TEMPORARY & PERMANENT BUFFER ZONES AT STREAM CROSSINGS</p>		
	<p>DRAWN BY:</p>	<p>DATE:</p>	<p>REV 02-01-10</p>



INSTALLATION OF GEOTEXTILE SILT FENCE

1. EXCAVATE A 100 x 100 TRENCH IN A CRESENT SHAPE ACROSS THE FLOW PATH WITH ENDS POINTING UPSLOPE.
2. DRIVE STURDY STAKES, SPACED 3000 APART, INTO THE GROUND ALONG THE DOWNSLOPE SIDE OF THE TRENCH.
3. INSTALL THE FILTER FABRIC FROM A CONTINUOUS ROLL AND CUT TO REQUIRED LENGTH. THE FILTER FABRIC SHOULD BE STAPLED TO THE UPSTREAM SIDE OF THE STAKES, EXTENDING THE BOTTOM 200 INTO THE TRENCH.
4. BACKFILL AND COMPACT THE SOIL IN THE TRENCH OVER THE FILTER FABRIC.



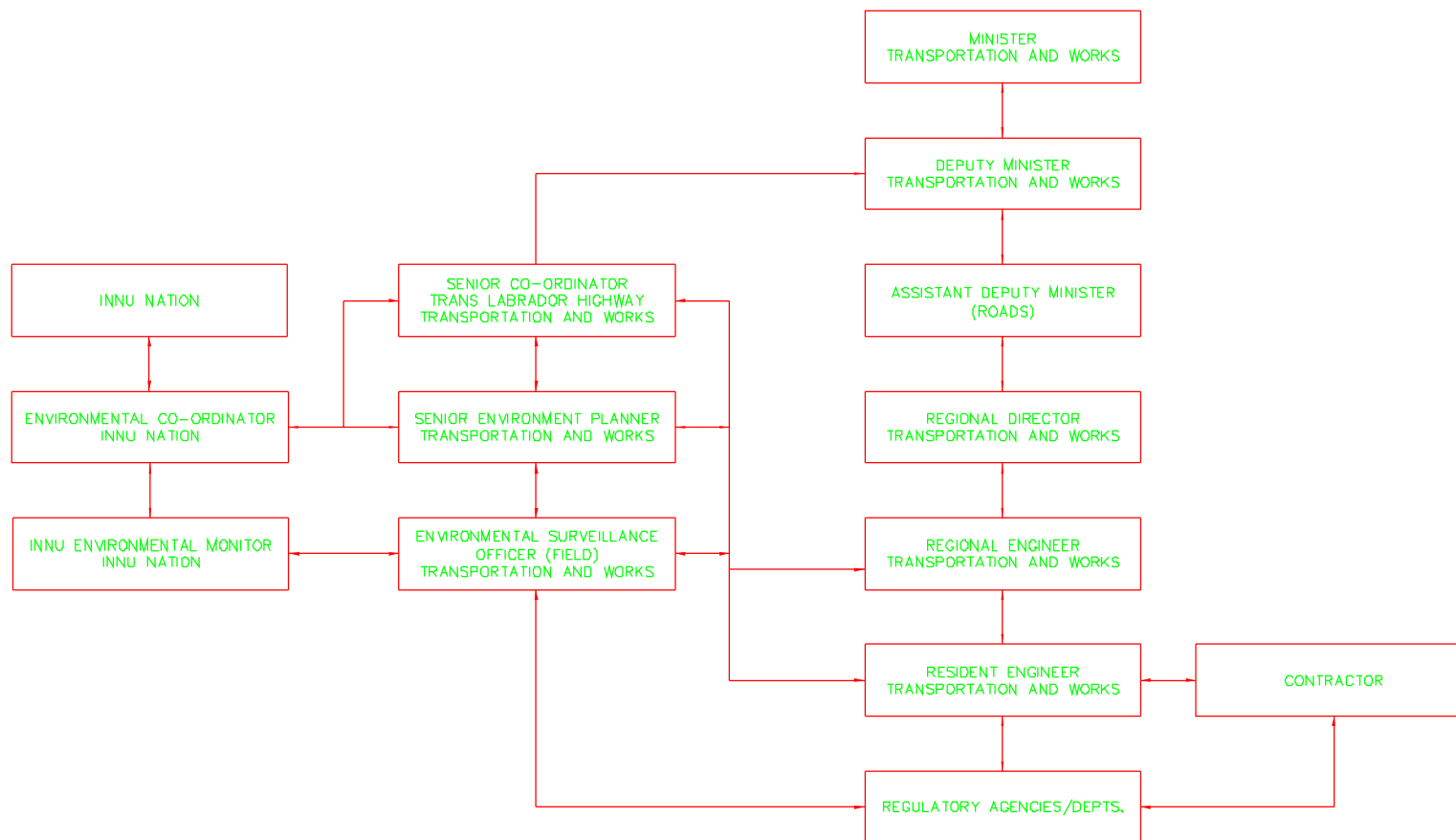


NOTES:
 CONCRETE QUALITY 30MPa @
 28 DAYS.
 AIR ENTRAINMENT 6±1%

Galvanized 19mm Ø Bolt Hooks Alternate @ 250mm c-c

<p>GOVERNMENT OF NEWFOUNDLAND AND LABRADOR DEPARTMENT OF WORKS, SERVICES AND TRANSPORTATION HIGHWAY DESIGN DIVISION</p>	<h2>SLOTTED WEIR BAFFLE DETAILS</h2>		
	DRAWN BY:	DATE: 01-01-21	SCALE: N.T.S.

FIGURE 1 TRANS LABRADOR HIGHWAY ENVIRONMENTAL MANAGEMENT AND REPORTING



LEGEND
 DIRECT FORMAL COMMUNICATION →