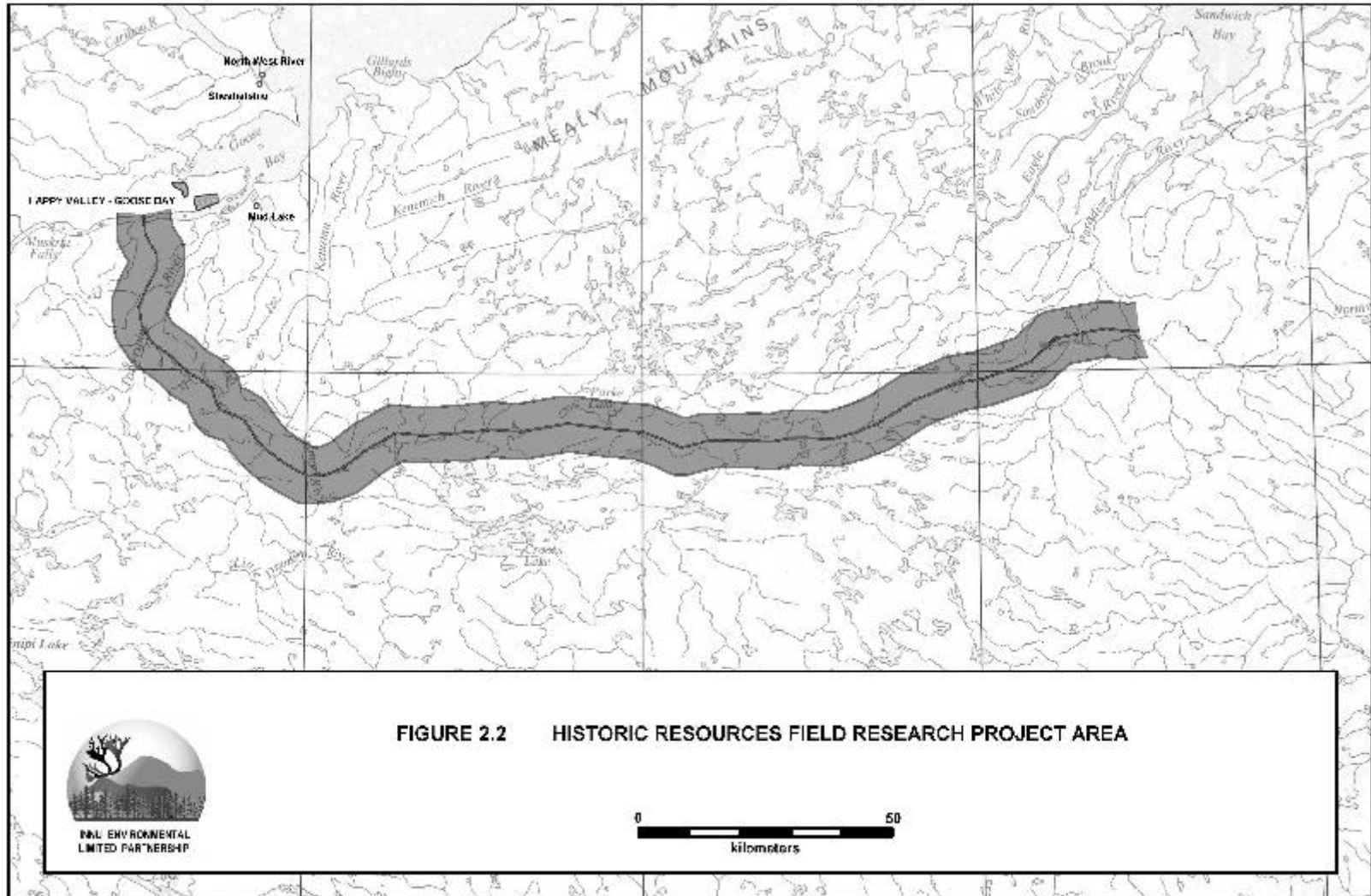
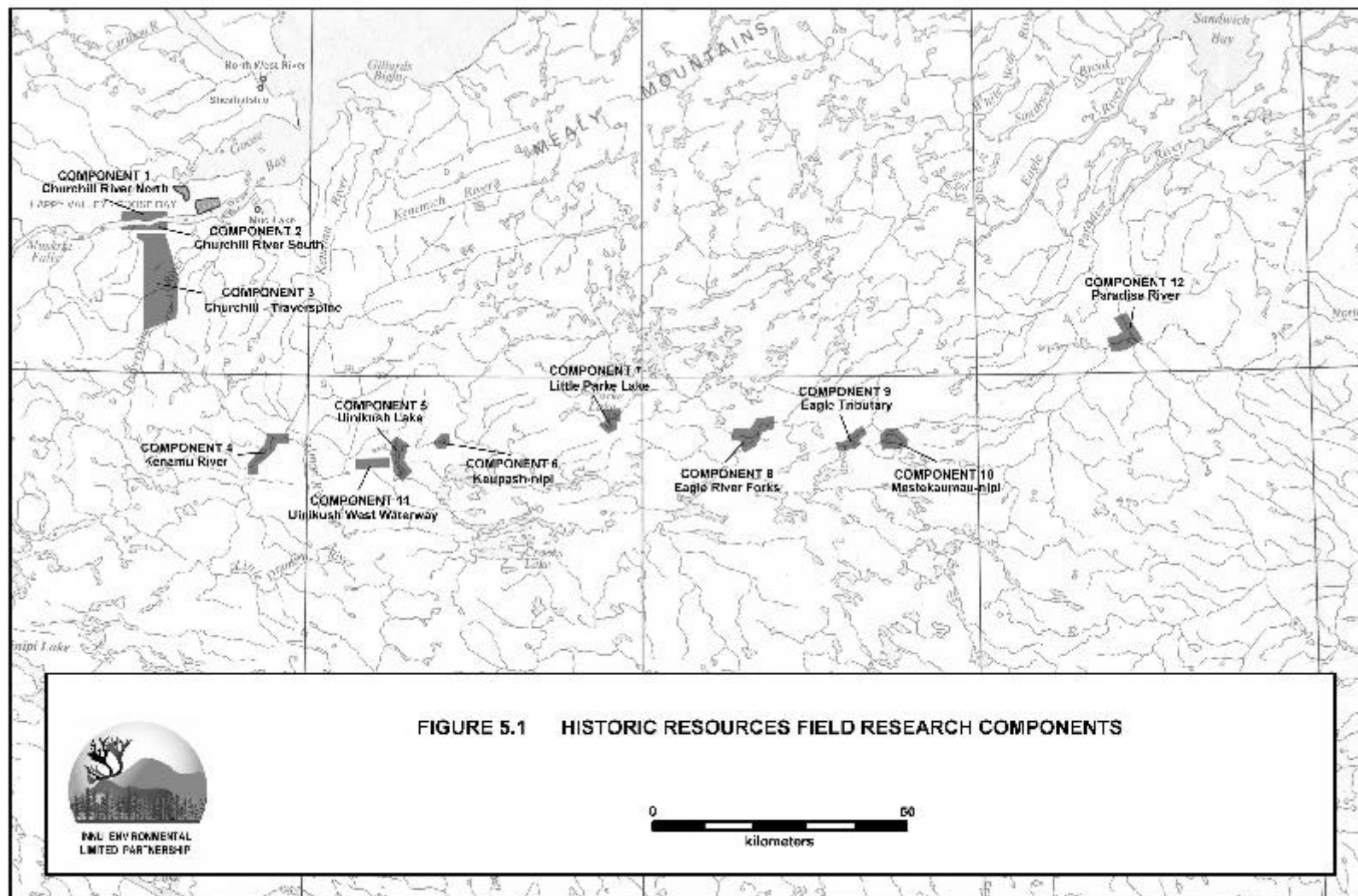
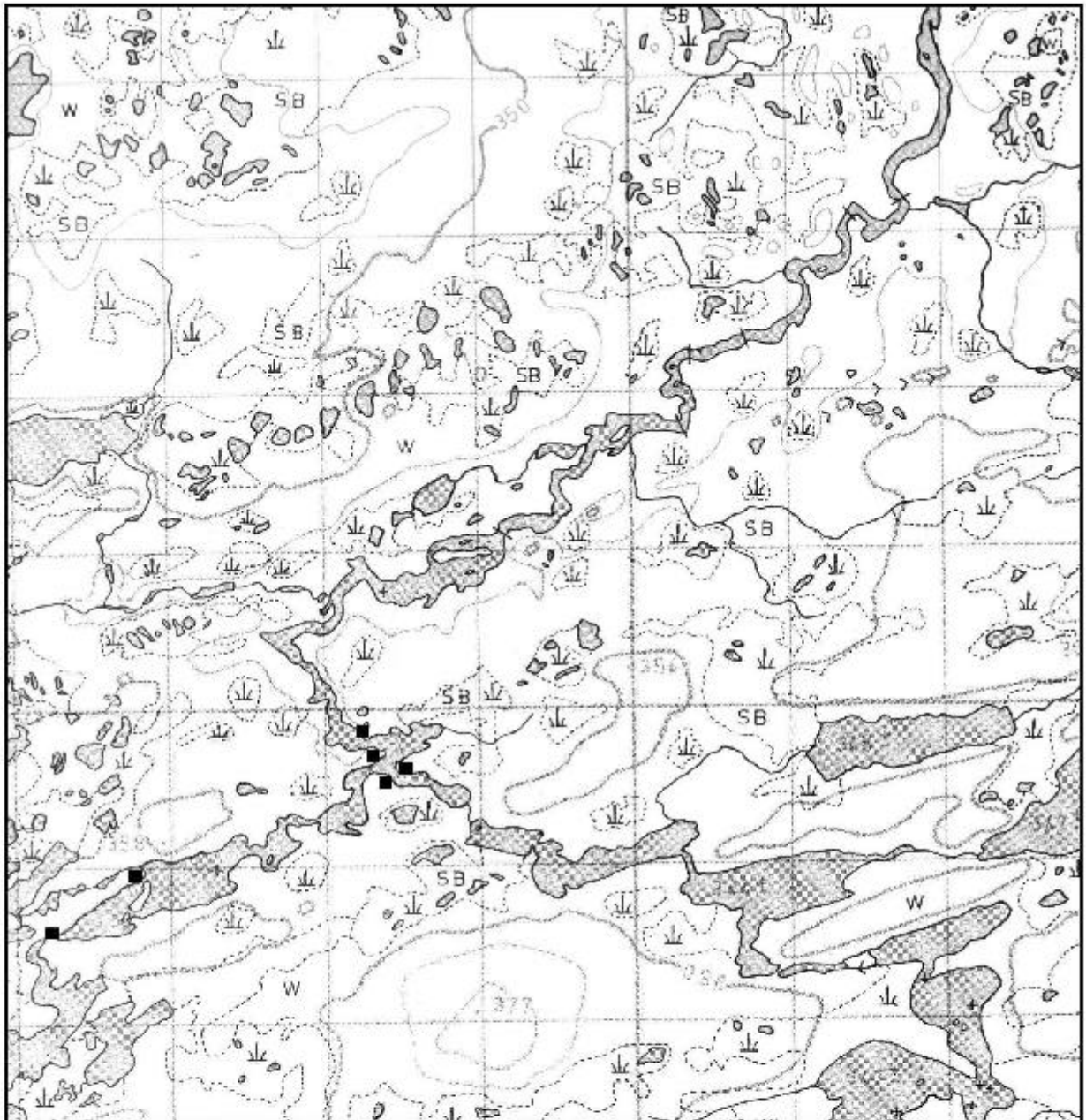


**FIGURE 2.1 HISTORIC RESOURCES  
PRE-FIELDWORK  
OVERVIEW RESEARCH  
STUDY AREA**







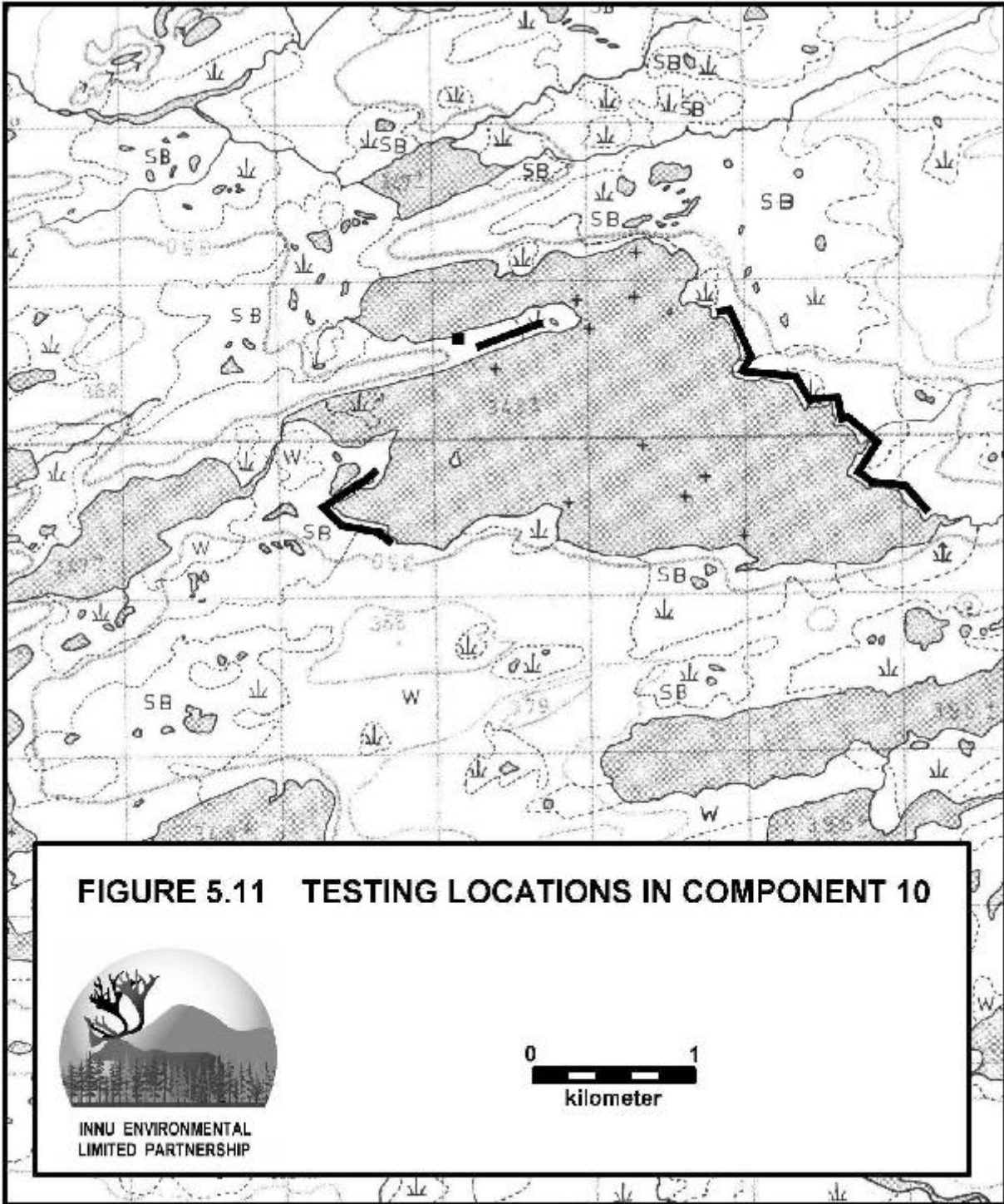


**FIGURE 5.10 TESTING LOCATIONS IN COMPONENT 9**



**INNU ENVIRONMENTAL  
LIMITED PARTNERSHIP**

0 1  
kilometer



**FIGURE 5.11 TESTING LOCATIONS IN COMPONENT 10**



**INNU ENVIRONMENTAL  
LIMITED PARTNERSHIP**

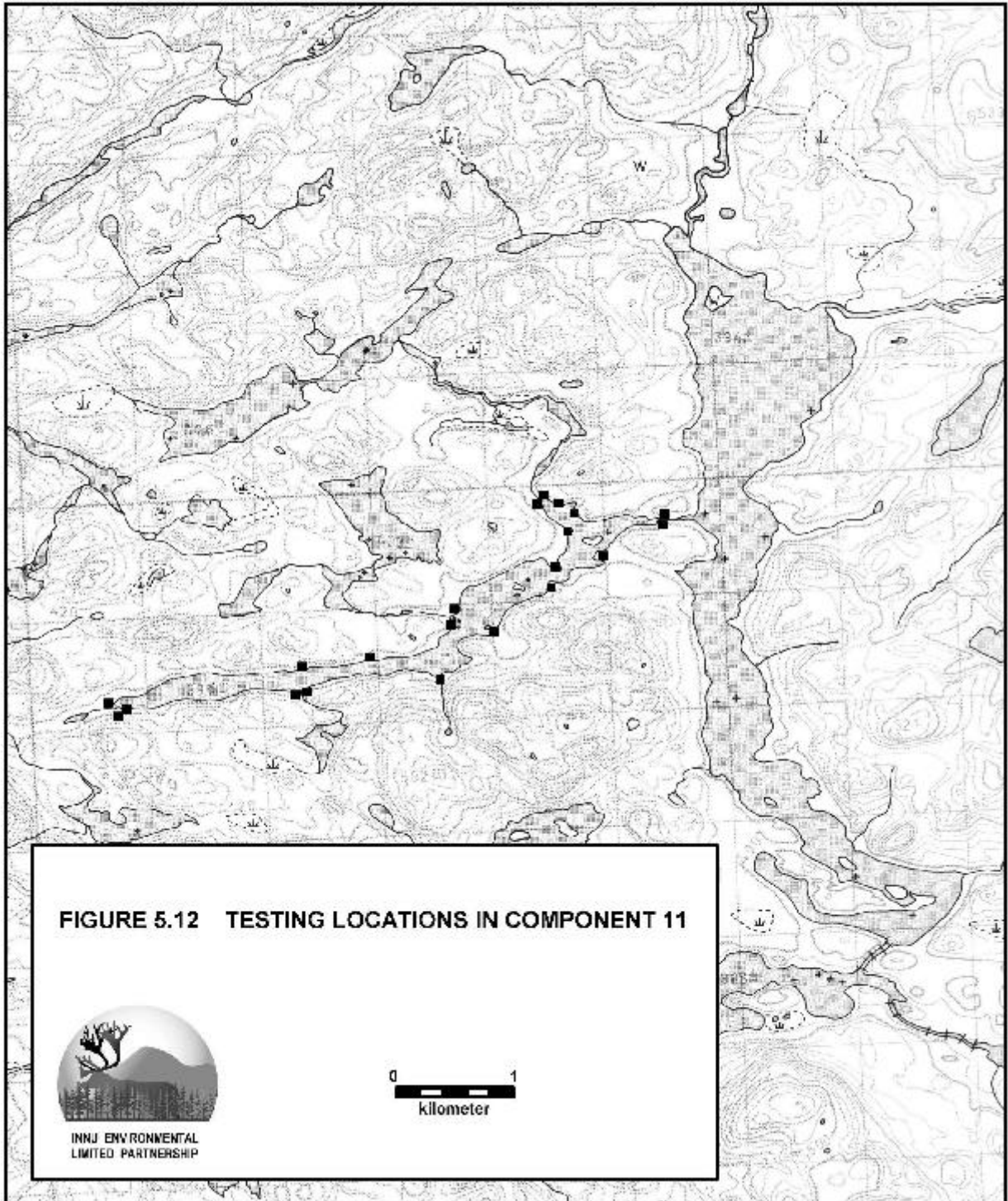
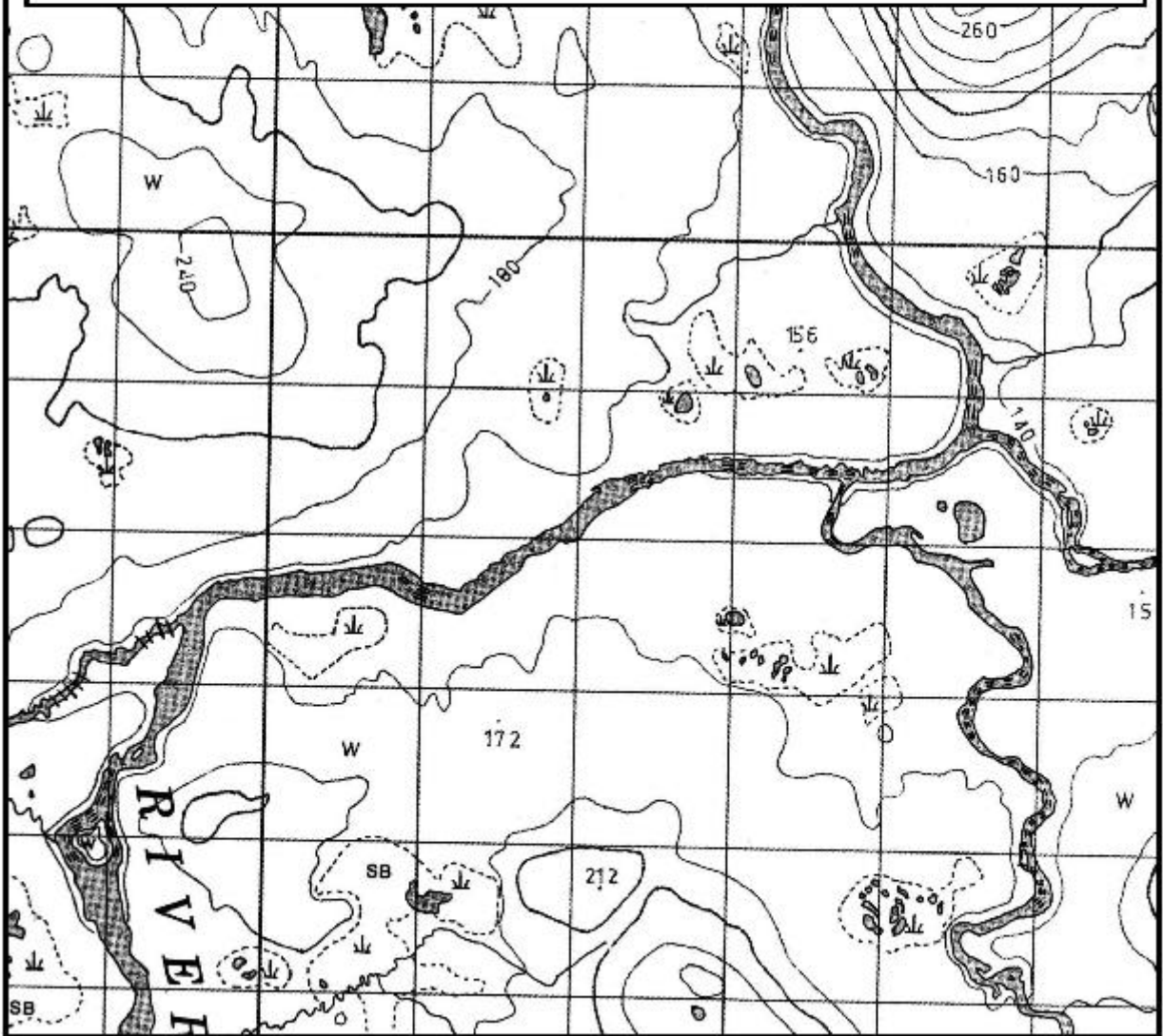
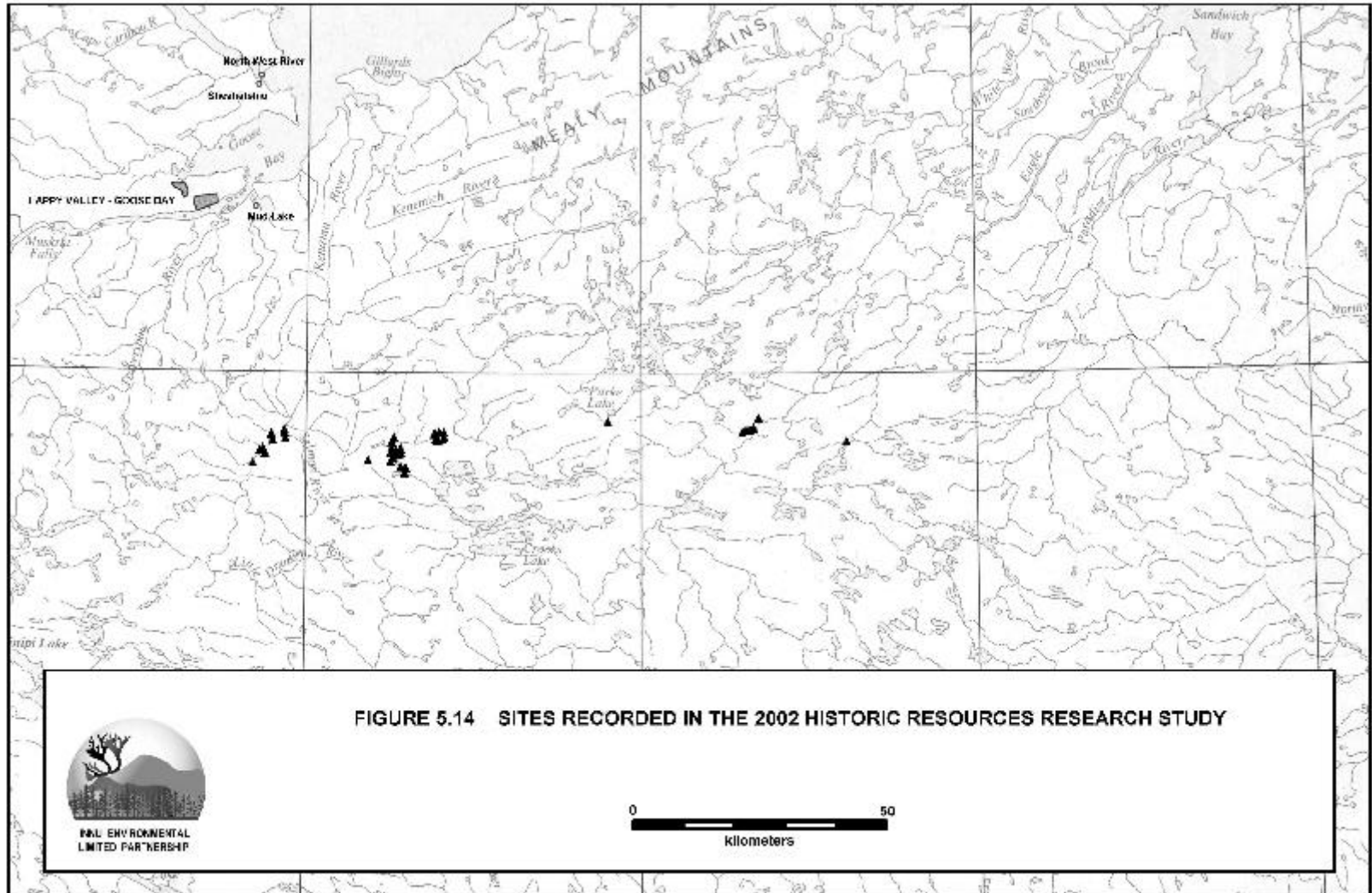


FIGURE 5.13 TESTING LOCATIONS IN COMPONENT 12



INNU ENVIRONMENTAL  
LIMITED PARTNERSHIP



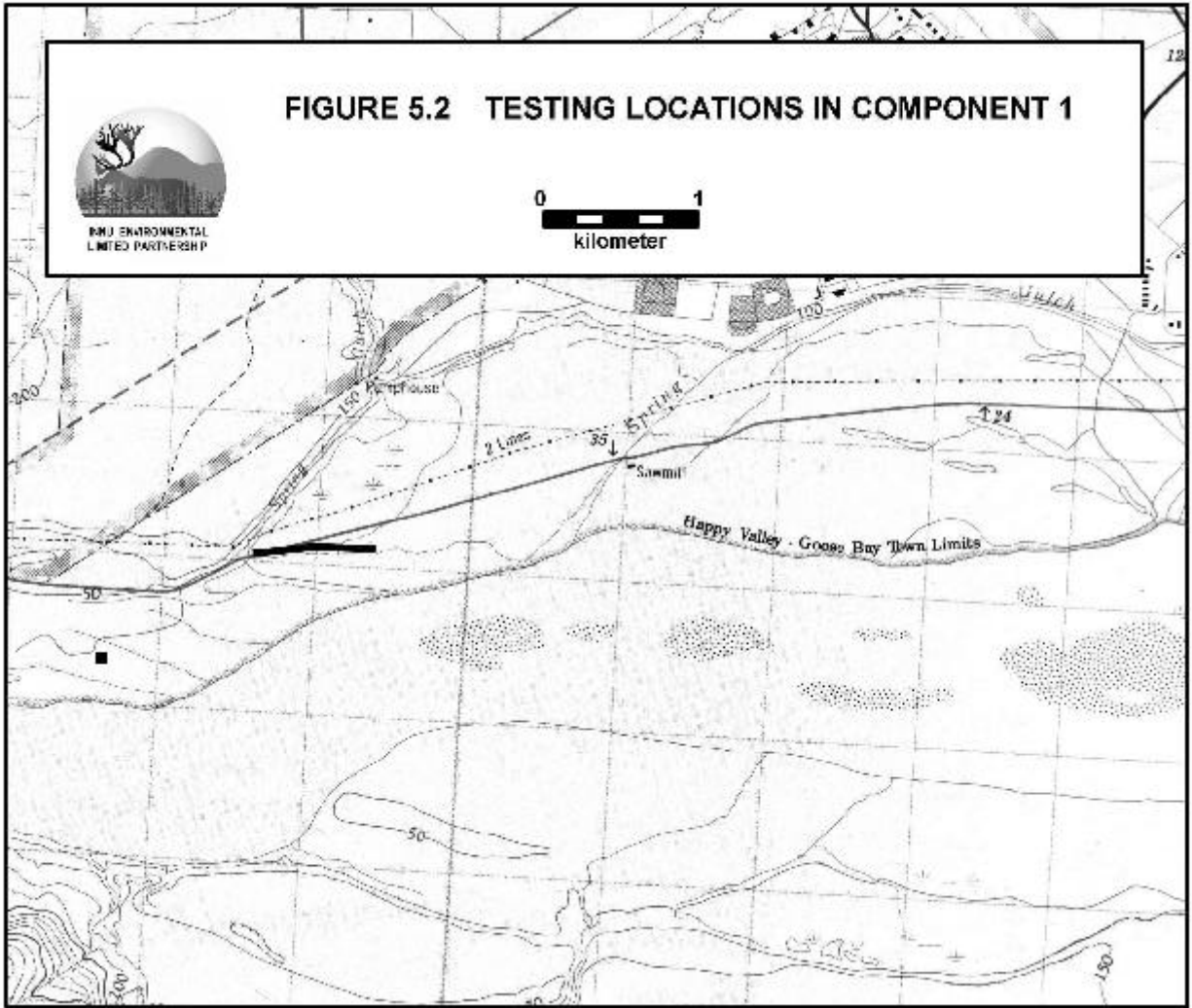


**FIGURE 5.14 SITES RECORDED IN THE 2002 HISTORIC RESOURCES RESEARCH STUDY**



0 50  
kilometers

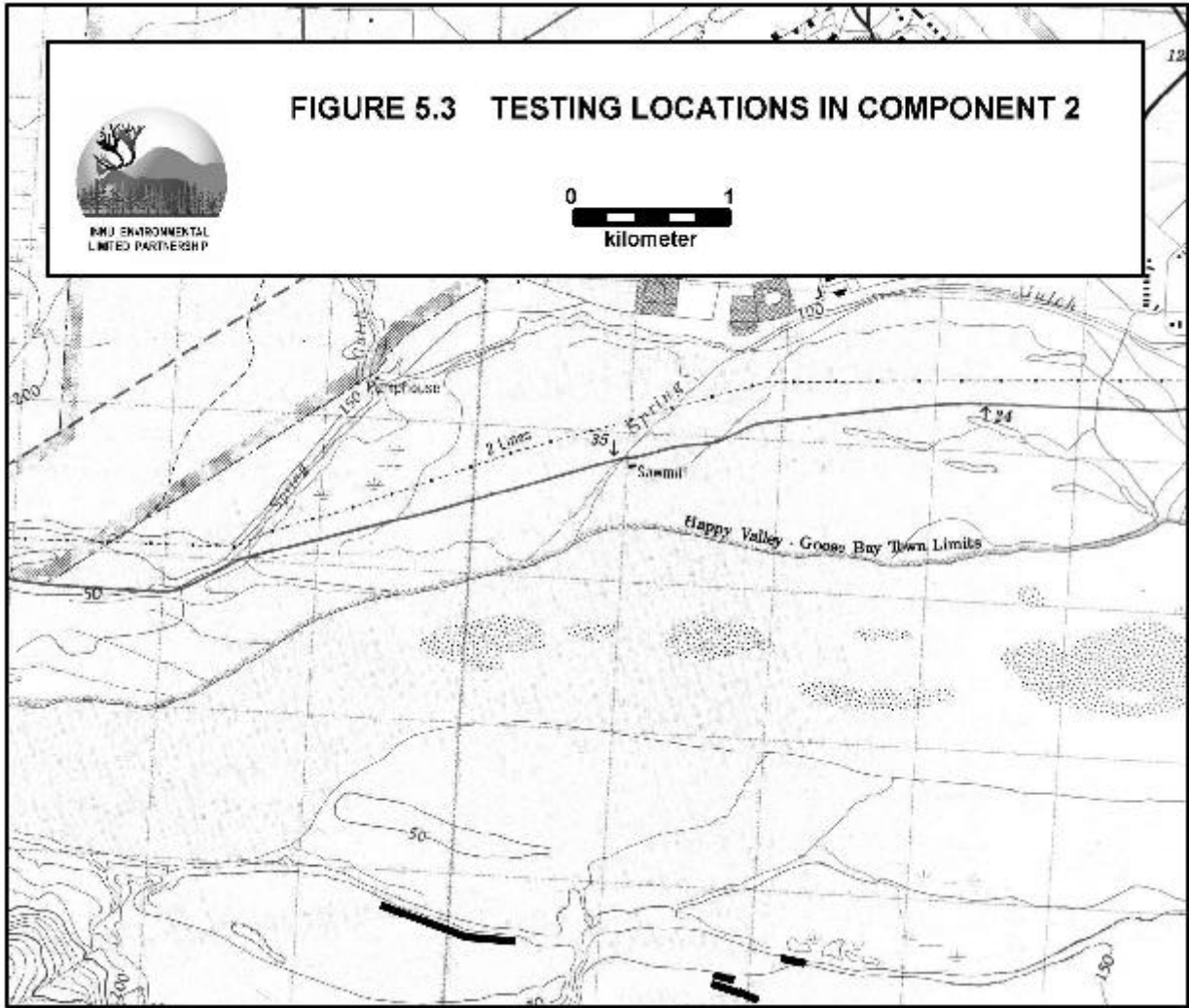


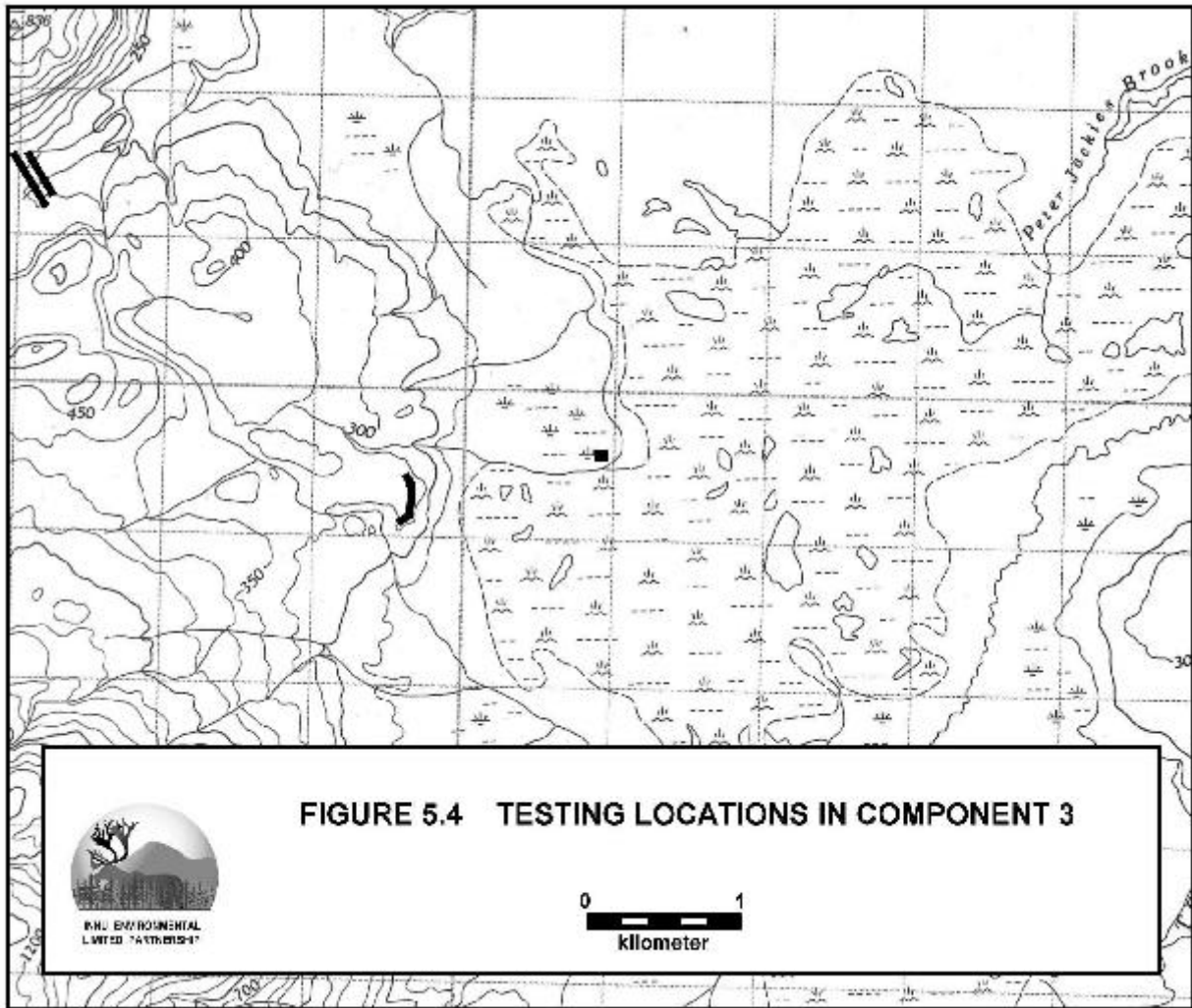




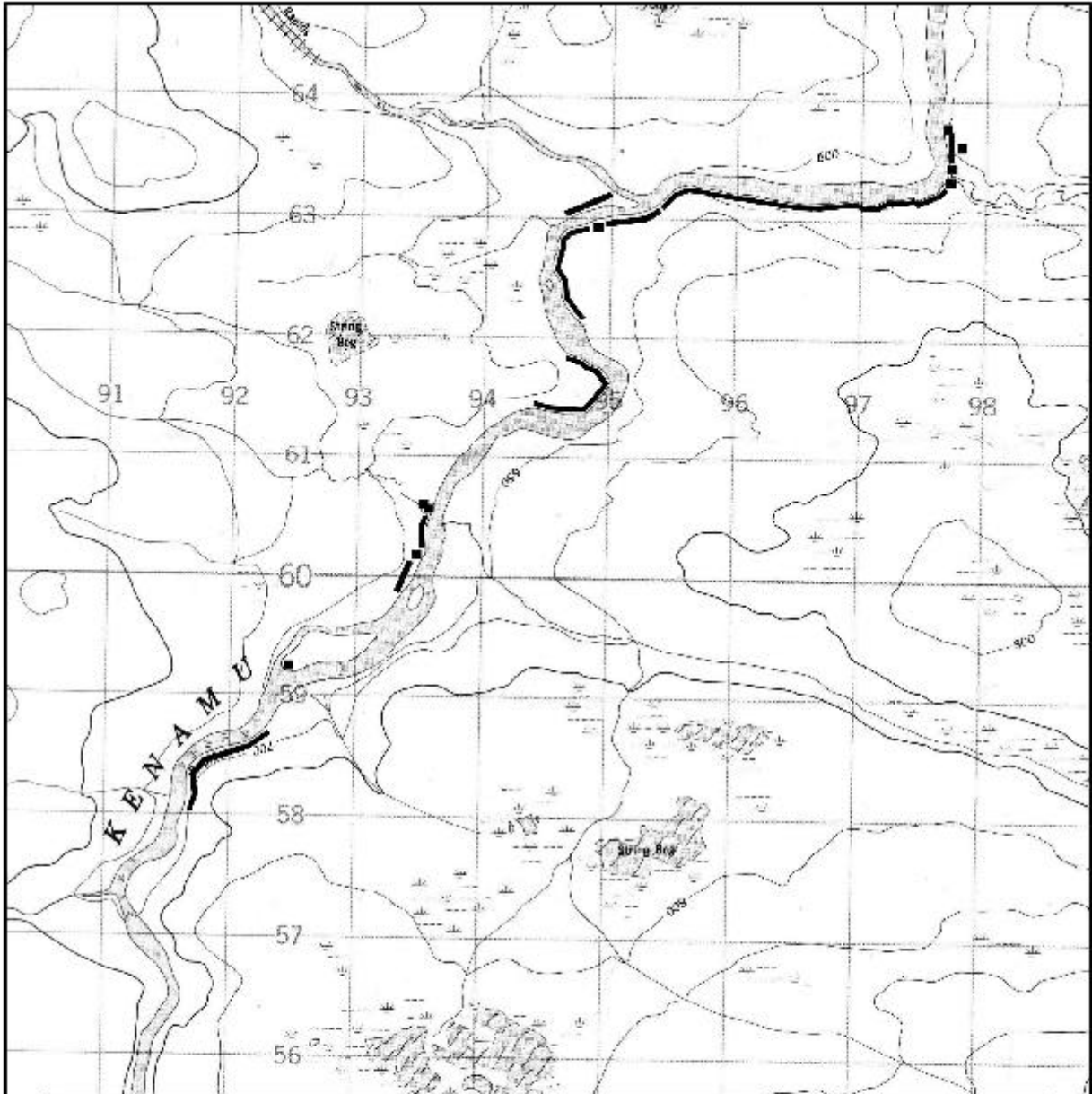
NMU ENVIRONMENTAL  
LIMITED PARTNERSHIP

**FIGURE 5.3 TESTING LOCATIONS IN COMPONENT 2**





**FIGURE 5.4 TESTING LOCATIONS IN COMPONENT 3**

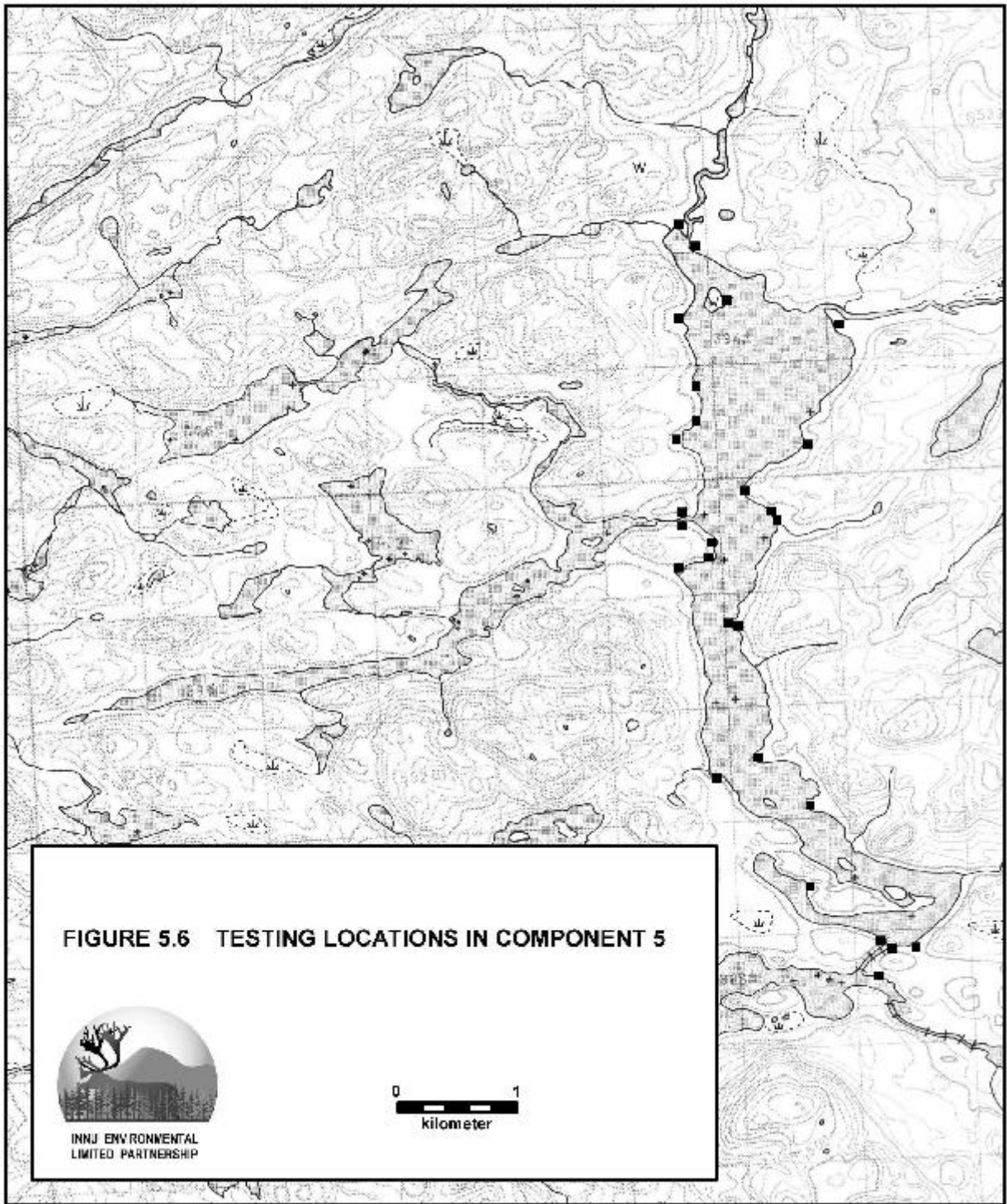


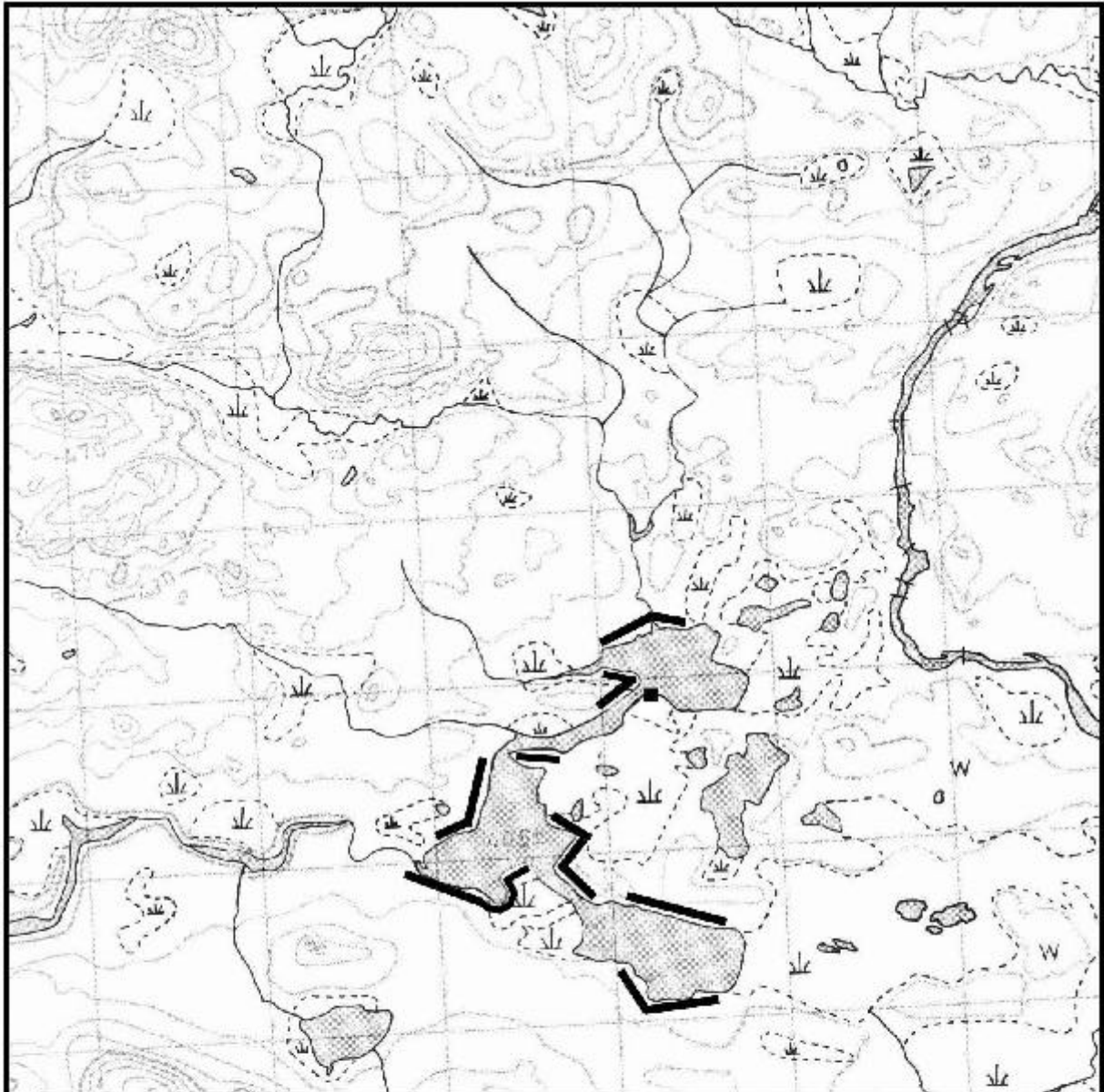
**FIGURE 5.5 TESTING LOCATIONS IN COMPONENT 4**



**INNJ ENVIRONMENTAL  
LIMITED PARTNERSHIP**







**FIGURE 5.7 TESTING LOCATIONS IN COMPONENT 6**



**INNU ENVIRONMENTAL  
LIMITED PARTNERSHIP**



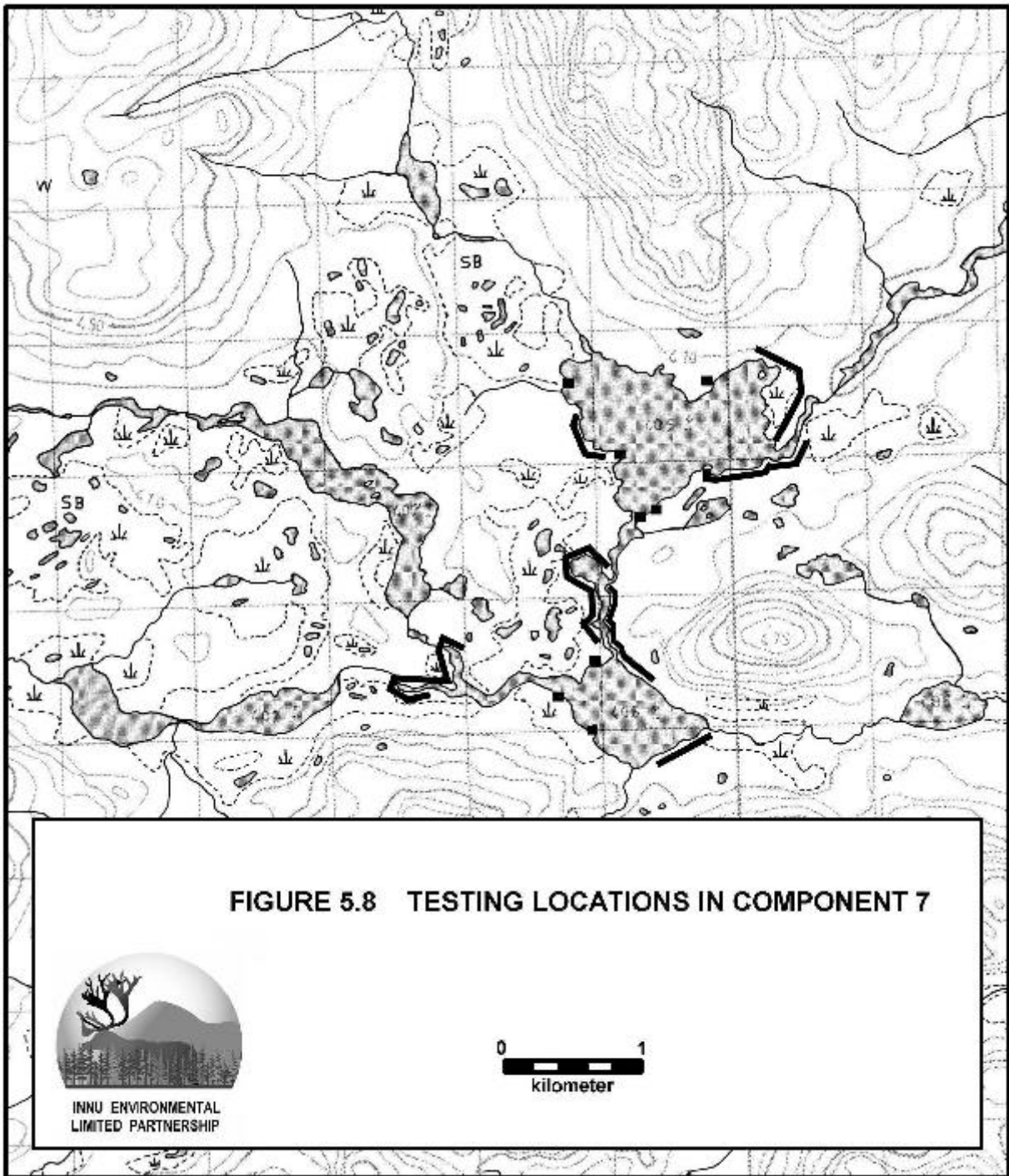




FIGURE 5.9 TESTING LOCATIONS IN COMPONENT 8

