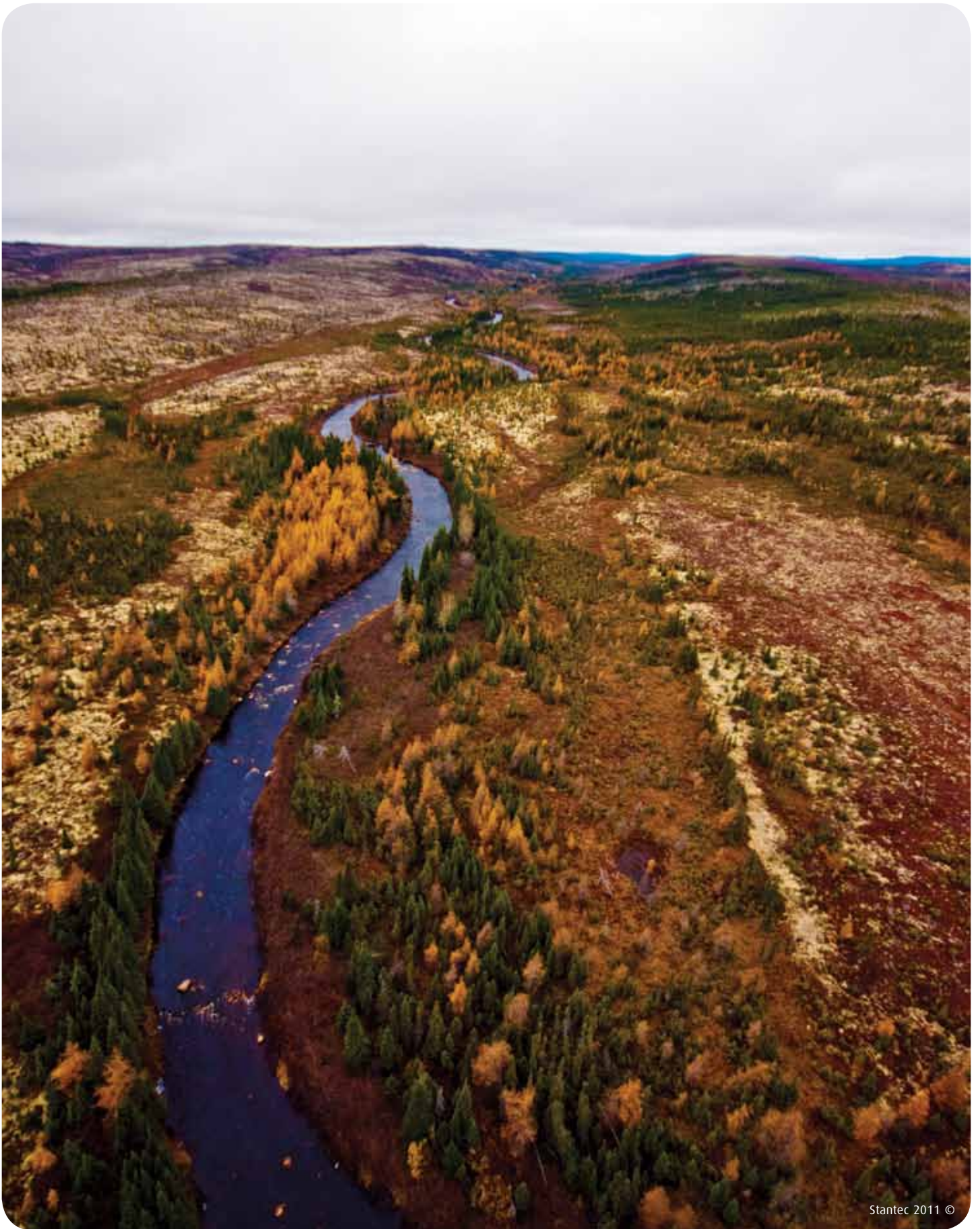




LABRADOR— NEWFOUNDLAND UASTEPIMAKEITS

ASSIN ENATUSENITAKAN

Espant Tipatshimun



Stantec 2011 ©

Ue tipatshimun mishinanikan, unastakanu uta mishinanikanish katshi minuats
apitshitakantshi mishananikea, unu umishinanikanuau Forest Stewardship Council.



Tutakanu ue mishinanikan, enu etustet Tshe Utshimau umishinanikan, tshetshi ueuepan tipatshimun enu unanuitakan enu espant atuseun mak tan kashinakun, kaiapininukuts auentshi mak kanishinakun assin. Uauitakanu eiapits enu Newfoundland Tshe Utshimau eshipipant enu kanishitutamuts enua auenua etatasentshi enu nutshiakanits Uastenipimakea mak katakanu atuseunu. Ue mishinanikan kasheshausteu, amistukushiusteu, Innu Stakanu, mak Essimeusteu.

Ettu uinastutamekue ue etustet mishinanikan, tshakau minuatshitapateau katak mishinanikan. Tshika uitshitapateau etuahapekash tipatshimun mishinanikan.



TSHEKUAIA ESISHUEMAKASHI

Tshe namasenitakan tshe nishitutakan – tshe senitakan tshekuan nte ueskats kakaminupan mak tshetshi esk ettu minuats tutakan tshetshi kaminuats ishinakuash, mak ettu tutakan tshetshi minupinitkan.

Uastepimakeits uisishipinits (ac) – ue ueskats mushinaw eshinakuash uastepimakeits; ekuni eshinakuash uastepimakeits napitshakanits nete mitshuapish.

Eshinakuash assin – uta ush eshinakuash assin, neun, aueshishats etats nte tapekush, aueshishats nte etats assish mak nte napish.

Uastepimakeits tshe uisishapanats – tshekuaia tshe apitshitakantshi tshetshi miskutshipitakanits enu uastepimakeits, mak tshetshi minauts miskutshipitakanits uimiskutshipatakantshe. Uastepimakeits tshe uisishapanats enkuni unua nash shanutshimakashi nete ueshepan kauaskapata napim.

Ustapimakeits kaiapitshakanits ute mitshuapish (dc) – ue eshinakuash uastepimakeits katshi miskutshipitakanits, tshika apitshakanuts tshetshi naspanitakan nete uastepimakeit apashish nete tapauestakantshi mitshuapa. Muk tapue tshakaui miskutshipitakanu tshetshi minu apitshiakanits nete mitshuapits.

Uastepimakeits tshe uishishapanits – tshika apitshitakanu tshekuana tshetshi tutakan ue Tshe nispaiakanits Uastepimakeits (HVdc) papan eiapits peik natshapate. Unua Uastepimakeits tshe uishishapanits naspitenitakuea tante tshakaui shuku papanuts uastepimakeits mushinua ue tshetshi atusemakash Uastepimakeits tshe uishishapanits.

Mishinanikan Assin Kanatusenitakant (EIS) – mishinanikan katutakan enu enateusenitakan etenitakuash esk katshishapanats atuseun. Enatusenitakan tan kanishinakan assin, mak katutakuts auentshi nte matshama etats, tshetshi senitakuash assin tshetshi uinakutakan mak tshetshi minuakue ue tshekuan uatshishipinitakan. Mishinanikan Assin Kanatusenitakant tshika mishiue tshitapatamut auentshi tshetshi minusenitat tshekuaia menuantshi mak kamenuantshi mak enu tshekuanu kanashutakanua.

Kataskapanants – tshe skapatan shipish nte kaniuashuash. Kataskapanants tshika apitshakanuts kanunant, nte tshekuan uatutakanu napish.

Shanutshimakash tshe nispaiakanits Uastepimakeits (HVdc) – tshetshi kuskunu tshetshi tshisipiakanits uastepimakeits nete uaiu tshe nispaiakanits. Ue etapitshitakan, uinaspatakataue nash uaiu uastepimakeits enu tshe nashatutakan.

Natakam – assin nete tshe utapekumuash uastepimakeit apash mak tshe natshapan.

Aueshishat enakatuenukamakanits – aueshishats kuetsishants tshetshi napakanits mak tshetshi nte tuiunanits assin etats tshetshi kameshinapanakanits. Utshe aueshishat katshi put nashitshitapamakanuts enkuts aueshishats nasten etat mak eniuts.

Assin espitenitakuash – assin nte nakatuapatakan tshetshi ka mista napakanit aueshishat uta assish, enu tshe utshimau nakatuapatan assinu.

Assin tshe pemuapekumuash Uastepimakeit apash – assin tshe apitshitakan tshe tapekumuash uastepimekiet apash. Ue assin nish etapaskuanikaiats tshika natusenitakanu tshetshi minuakue, mak ashutastannu mashat tshika tuaskuanakanu tshetshi ushitakantshi nashekua enu tshetshi tapekumutakan uastepimakeits apash. Statshitakanu eiapits shuneau nete napish, mak nete uastepimakeit tshe uisishapanits, ashinina, meskeaua mak utapanu meskeaua, mak kataka tshekuan.

Tshe tamuash – nte tshe tapekumuash ue uastepimakeit apash nte minaskuash mak nte mastukush, mak nte natautshishi uapukuna, katshi put uinakutat assinu. Nanikutini ue nashinihataganu ute (ROW).

Tapekush Uastepimakeit apash – uastepimakeit apash tshe tapekumuash nte tapekush, mut tshika manuiskutshinikanua tshetshi kaunakutat assinu mak tshetshi ekatakantshi nete assin tapekush.

Natautshashi Tshekuaia – mastukuts mak shakaua tshetshi tshamanakantshi tante katshi ustapininukuts kastuseshat enu unapekumutataue uastepimakeit apashanu. Unua tshekuana kanitautshinuani tshika meanakanua/tuaskuanikanu.

TSHEKUAIA NAPITSHITAKANTSHI

Acronym	Description
ac	Uastepimakeits uisishipinits
ATV	Utapaniss Uapushats
CEA Agency	Tshe Utshimau umishinanikantshup Assin etaskatakan
dc	Ustapimakeits kaiapitshakanits ute mitshuapish
EIS	Mishinanikan Assin Kanatusenitakant
EMF	Uastepimakeits eshamushakanits
EPP	Assin Tshe Minu nakatuapatakan
HDD	Tshe pukunenikan Assin
HVac	Uastepimakeits eshashutshits
HVdc	Shanutshimakash tshe nispaikanits Uastepimakeits
km	Etapaskuanikaiats
kV	Eshashutshit Uastepimekeits
m	Nisht Mashat
Nalcor	Tshe Utshimau umishinanikantshuap
TCH	Utapan meskeiau
TLH3	Utapan meskeiau nte Labrador

TSHEKUAIA UNAITAKANTSHI

UESKATS	1
TSHEKUAN UISHUITUTAKAN UE ATUSEUN	3
UASTEPIMAKEIT ATUSEUN	4
Uastepimakeits tshe uisishapanats	4
Uastepimakeits apasha	5
Tapeskush Uastepimake apasha	6
Uastepimakeits tshe uishishapanits	8
TSHE UISHITAKAN ATUSEUN UASTEPIMAKEITS	10
Uastepimakeits tshe uistataushunats.....	10
Uastepimakeits apasha	10
Tapeskush Uastepimake apasha	11
Uastepimakeits tshe uishishapanits	11
Tshe manuhakan Assin.....	12
Atakantshe tshekuaia tshetutakantshe.....	12
Atakantshe tshe nashapapanats.....	12
TSHE PAPANITAKAN MAK TSHE MANANAKATUAPATAKAN UE ATUSEUN	13
Tshe nashapapanant.....	13
Tshe nashanakatuapatakan.....	13
Pamin tshena shueuepan te assish.....	14
ASSIN TSHE MINU NATUSENITAKAN	15
TSHE ANIMUANT MISHIEU AUENTSHI TSHE UAUITAMUAKANITS	17
ASSIN ESHINAKUASH ANUSHU	18
Neun.....	18
Assin	19
Napissa, Shipua, mak Napiss	20
Shiuapun	21
ASSISH TE ETAIANTS	25
Eshanemetakan mak Etapitshitashunats.....	25
Utenaua.....	26
Tshe nashuniashepan	26
Assin etapatshitakan	27
Assin tshe nashanuapatanuants	28
Tshekuaia tshe nashitshitapatakantshi.....	29
Shiuapush Nameshats	29

ASSIN KANISHINAKUN UE USHITAKANTAUE UASTEPIMAKEITS	31
Neun.....	31
Assin	32
Napissa, Shipua, mak Napiss	33
Shiuapun	34
KATUTAKUTS AUENTSHI ETE ETAPATSHITATS ASSIN	36
Eshanemetakan mak Etapitshitashunats.....	36
Utenaua.....	36
Tshe nashuniashepan	37
Assin etapatshitakan	38
Assin tshe nashanuapatanuants	38
Tshekuaia tshe nashitshitapatakantshi.....	39
Shiuapush Nameshats	40
TSHE MINU NAKUTUAPAKANT MAK TSHE MINUATS UAUITAMAKUNEUK	41
MASTEN	42

Labrador – Newfoundland Uastepimakeits atuseun



- Uastepimakeits tshe uisishapanats
- ▬ Tshakatapekumukannu Uastepimakeits apash
- ▬ Tapekush tshe pemuapekumuts ue Uastepimakeits apash
- ▬ Utapan meskeiau nte Labrador
- ▲ Electrode Site



UESKATS

Ue mishinanikantshuap enu tapenitum Tshe Utshimau. Tshe Utshimau uitatum Labrador – Newfoundland Uastepimakeits atuseunu nete Tshinaskush nete tshetshi tapishenikanits kaishinikatent Soldier Pond nete Newfoundland. Tshetshi apitshitakanits Uastenipemakeits nete kuesteshe assish mak nete uaiu assish kanishinikatet United States.

Tshe Utshimau nassishueu tshetshi uishitakanits menuats tshekuano tshetshi minunakuash ue atuseun mak esk nete ettu tshetshi neush apitshakanits. Tsha kaui ishipipanu etutent enu Tshe Utshimau umishinanikanu.

Esk eka tshishipan ue atuseun, Tshe Utshimau tshika ueuepinitau tipatshum umishinanikan enu kanishipapanipan. Ue mishinanikan tshe apitshitakan, enkunu tshe nashapapan ute atuseun.

Ue atuseun, tshaka tshitshishapanu patush mishiue Ottawa Tshe Utshimaut mak Newfoundland Tshe Utshimau mamu tapuetataue. Itishumakanuts Tshe Utshimau ukakuseshima tshetshi natusenitat enu assinu tan kaishinakunu apitshitakantshe assin.

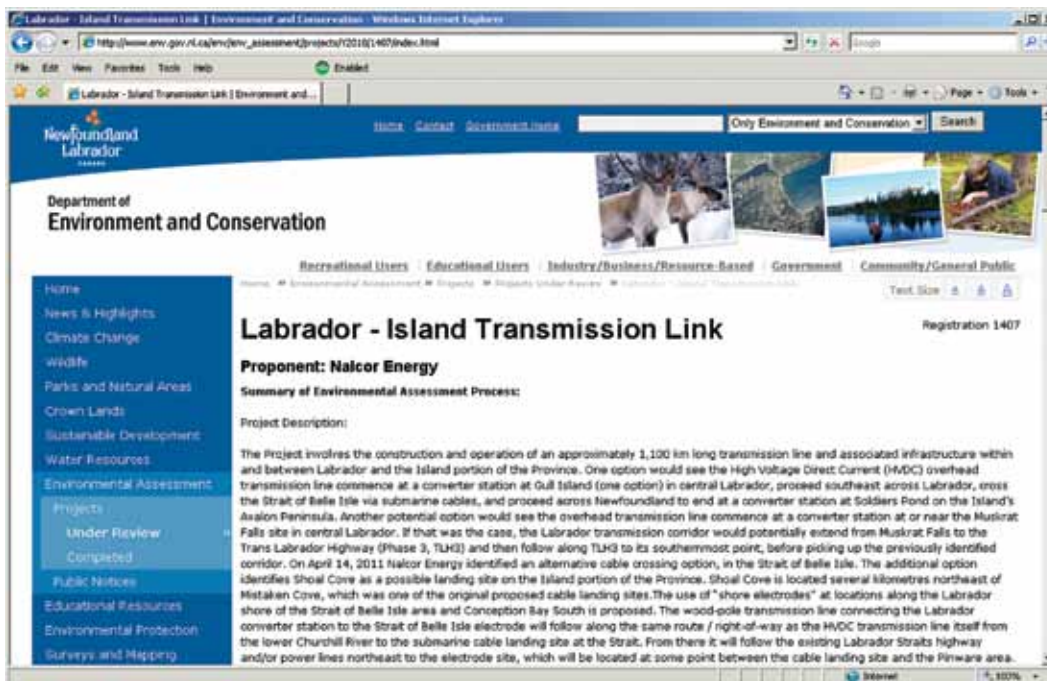
Tshe Utshimau ukakuseshima tutamupan tipatshimunu mishinanikan enu enatusenitats assinu tshetshi tshishipinits unu atuseunu. Ottawa Tshe Utshimau, Newfoundland Tshe Utshimau, Innuts, Essimeuts mak katakats auentshi tshash tshiuapatamupants.

Ue tipatshimun mishinanikan, tshitshue nispitenitakun tshetshi uauitshinukuts Tshe Utshimau Ukakuseshimau tshetshi minunakushits, mak tshetshi kamitshinakuash assin.

Ue mishinanikan, eshi matshat, mak kataka mishinanikea etashanamuakan Tshe Utshimau uta katshi uapatakanua: www.env.gov.nl.ca/env/

Ettu tshekuan unatusenitamekue ue nutshikuakanits Uastenipimakeits, tshe tshitapatameuk: nalcorenergy.com/lowerchurchillproject.com.

Mishiue etusten ue mishinanikan mak kataka mishinanikea, uta katshi maskakanua: www.env.gov.nl.ca/env.



The screenshot shows a web browser window displaying the website for the Department of Environment and Conservation in Newfoundland and Labrador. The page title is "Labrador - Island Transmission Link". The main heading is "Labrador - Island Transmission Link" with a registration number of 1407. The proponent is listed as "Nalcor Energy". Below this, there is a section for the "Summary of Environmental Assessment Process" and a "Project Description". The description states: "The Project involves the construction and operation of an approximately 1,100 km long transmission line and associated infrastructure within and between Labrador and the Island portion of the Province. One option would see the High Voltage Direct Current (HVDC) overhead transmission line commence at a converter station at Gull Island (one option) in central Labrador, proceed southeast across Labrador, cross the Strait of Belle Isle via submarine cables, and proceed across Newfoundland to end at a converter station at Soldiers Pond on the Island's Avalon Peninsula. Another potential option would see the overhead transmission line commence at a converter station at or near the Muskrat Falls site in central Labrador. If that was the case, the Labrador transmission corridor would potentially extend from Muskrat Falls to the Trans Labrador Highway (Phase 3, TLH3) and then follow along TLH3 to its southernmost point, before picking up the previously identified corridor. On April 14, 2011 Nalcor Energy identified an alternative cable crossing option, in the Strait of Belle Isle. The additional option identifies Shoal Cove as a possible landing site on the Island portion of the Province. Shoal Cove is located several kilometres northeast of Mistaken Cove, which was one of the original proposed cable landing sites. The use of "shore electrodes" at locations along the Labrador shore of the Strait of Belle Isle area and Conception Bay South is proposed. The wood-pole transmission line connecting the Labrador converter station to the Strait of Belle Isle electrode will follow along the same route / right-of-way as the HVDC transmission line itself from the lower Churchill River to the submarine cable landing site at the Strait. From there it will follow the existing Labrador Straits highway and/or power lines northeast to the electrode site, which will be located at some point between the cable landing site and the Pinware area."



TSHEKUAN UISHUITUTAKAN UE ATUSEUN

Tshitshiue uiapitshiakanu uastenipimakeits. Ue Uastepimakeits atuseun tshika minu apitshiakanuts. Uastepimakeits atuseun tshika minunakun enu tshetshi mushinau apitshiakanits mak katshishuka animishiut Uastepimakeits.

Espitaskamakash Assin, aiask tshateu mak mitshetuts auentshi meshimenitats tante tshapanu assin tshe shatet. Enkun peik uishuitutakan ue Uastepimakeits atuseun tshetshi kashuka apitshiakan pamin nete Uastepimakan tshuapish. Ue Uastepimakeits atuseun, katshi shuka apitshiakanut pamin.

Ue Uastepimakeits atuseun tshishipantshe, enu esiapitshiakan Uastepimakeits, ettu katshi shuka animishiuts napitshiakanits, mak ettu tshika minupanu.

Ue tutakantshe Uastepimakeits atuseun tshika mashaua tshe ueupantshi atuseuna mak tshaka mishenua tshetshi shuneatshet auentshi.

Tshe Utshimau ukakuseshima tshash tshitshitapatamupan enu kataka tshekuana enu tshetshi tutuats Uastepimakea. Tshe Utshimau ukakuseshima tshash tshistutamupan mishinanikanu enu meskats kashuka mestanakanits shuneanu.

Maunua natusenitakanipanu tshetshi apitshitakantshi tshetshi ushakanits Tshe Utshimau:

- Tshetshi taskupatakan Uastepimakeit apash – apitshitakan tapekush put kie tshetshi muk stakan nete tapekush
- Tshetshi maskash kueteshe tshetshi pimapekumutakan Uastepimakeit apash.



UASTEPIMAKEIT ATUSEUN

Ue uastepimakeit atuseun tshika nutshihakanu uta Newfoundland mak Labrador. Ue Uastepimakeit atuseun tshika apitshitakanu mitshet tshekuaiia mak tshetshi papants:

- Uastepimakeit atuseun nete Mentutshu tshika uisishapanu tshetshi Uastepimakeits uisishipinits (ac) mak tshetshi Espashapan Uastepimakeits (dc) .
- Tshe nispaikanits Uastepimakeits (HVdc) tshika tapekumutakanu nete Mentutshu nash nete kanishinihateua “Strait of Belle Isle” ute Labrador.
- Tapekush tshika tapekumutakanu Uastepimakeit apash tshetshi taskapatakan nete “Shoal Cove”.
- Tshe nispaikanits Uastepimakeits (HVdc) tshika tapekumutakanu nete kanishinihateua “Shoal Cover” nespish nete “Soldier Pond”.
- Uastepimakeits nete kusteshe tshe uishishapatakuts tshika takun nete “Soldier Pond” tshetshi nte kuesteshe apitshiakanits.
- Katakana tshekuaiia tshika apitshitakanua nete L’anse au Diable” ute Labrador mak nete “Downden’s Point nete Newfoundland.

Uastepimakeits tshe uisishapanats

Uastepimakeits tshe uisishapanats tshika tshakamutakanua. Tshika ushitakanua nete assish, tshika apitshitakanu uapineku mak nashekua mak tshika ishinakutakanua tshetshi kanatakantshi matshama.

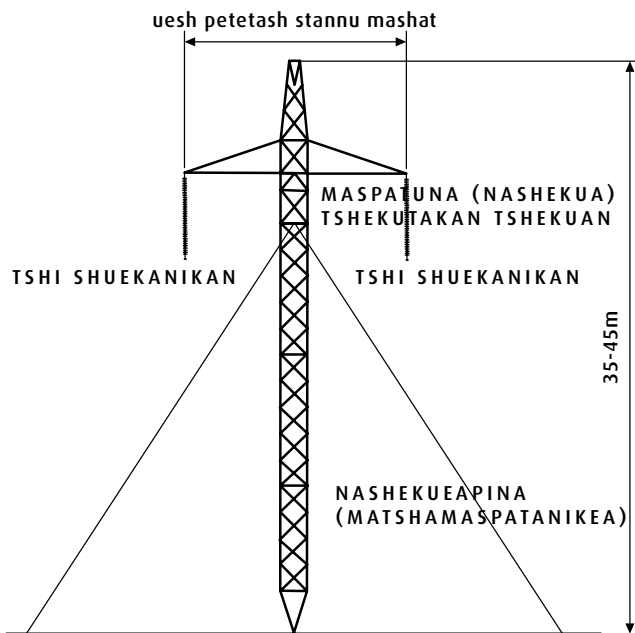
Mentutshu tshika tshishipinuts Uastepimekeits, mak nete Soldier Pond tshika minuats tshika uisishipinuts ket nete ispiakanits nete Newfoundland tshetshi tapekumuakanits nete mitshet mitshuapits mak kataka mishinanikantshuapits. Nete Soldier Pond, minuats tshika tapekumutakanu nete Utapanameskiash, ue tshika tapauestakanu nete Soldier Pond.

Uastepimakeits apasha

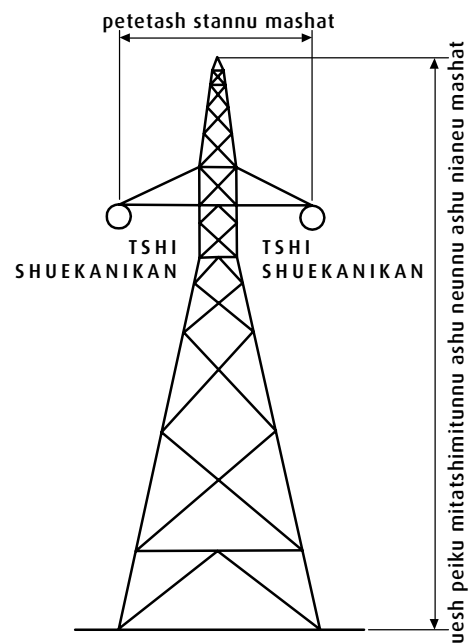
Ue Uastepimakeit apash iatapa tshaka atshipatakanu nete Newfoundland. Unua Uastepimakeit apasha ettu tshika tshaka shutshimekea tshetshi ettu uaiu ispantshi. Uesh Neu tashimitamatunnu etapaskuanikaiats tshika apitshitakanu Uastepimekeits apash nete Mentutshu mak nete Forteau, uesh Nishautash tashimitamatunnu etapaskuanikaiats tshaka apitshitakanu Uastepimakeits apash nete Shoal Cover mak nete Solders Pond. Una Uastepimakeit apasha tshika tapekumutakanua, tshika apitshitakanu nashekua manamashatshi, uesh nistunnu ashu pitetash mashat put kie neunnu ashu pitetash mashat tshika naskuaskuea. Una Uastepimekeit apasha tshika ushepeteut uastepimakea nete Mentutshu nete tshe naspatats nete Newfoundland. Tshaka takun nashekuiapin tshetshi pikapatats namassuts.

TSHE NASHANAKUASHI NASHEKUA

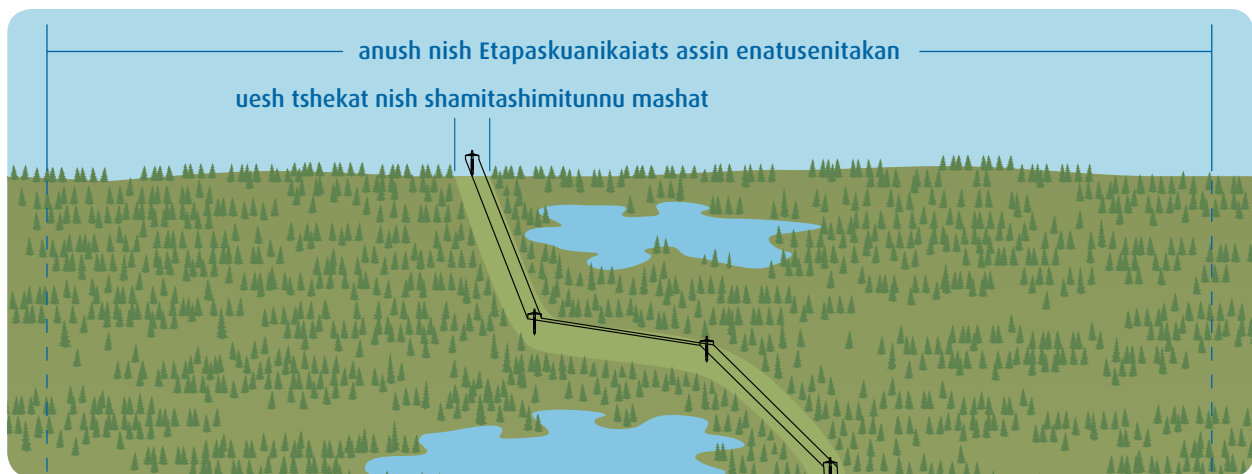
UASTEPIMAKEIT APASHA TSHE KUTETSHI



TSHE NATSHAPAN UASTEPIMAKEIT APASH



Tshe Utshimau ukakuseshima maskamuts nete tshe tapekumutats unua Uastepimeakeits apasha, muk unu assinu tshe apitshitakanits, esk enu natusenitakanu tshetshi manuanukue tshetshi kapikunakan assin. Una tshe apitshitakantshe kamamashauanit nashekua, uesh ashutash stannu mashat tshika tuaskuanakanu. Muk tapue tuaskuanakantshe tshika minu natusenitakanu assin, mak tshika natutuakanuts auentshi enu espetenitats assinu.



Nete Forteau mak nete Shoal Cove, ue Uastepimeakeits apasha tshika stapauestakanua nete mitshuapits, ue mitshuap tshaka tutakanu uesh peik Etapaskuanikaiats nete shuneu. Tshaka tamish assish ekatakanua ute Uastepimakeit apasha, unua tshe tshakumuashi nete tapekush napish nete tshe tapekuamuashi nete kaishinikateua Strait of Belle Isle.

Tapeskush Uastepimake apasha

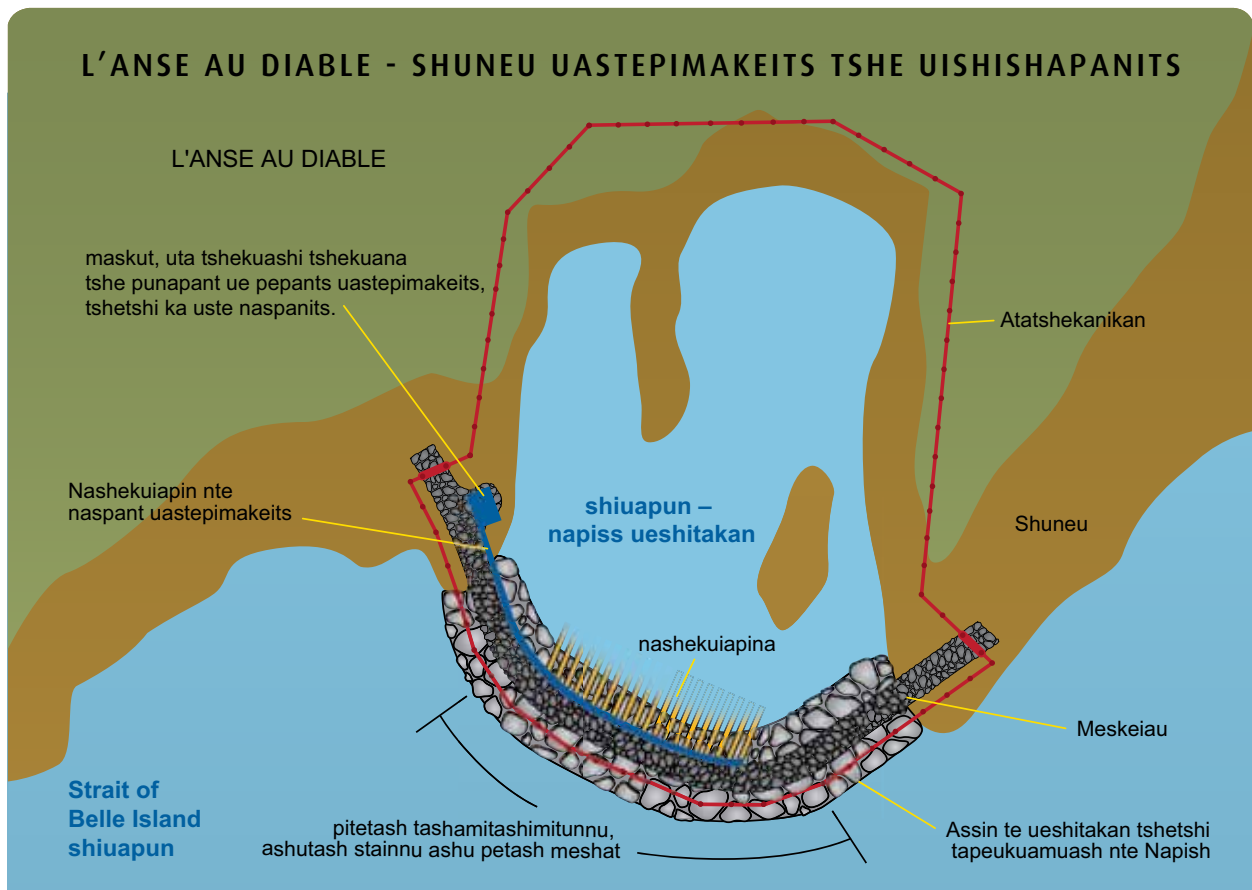
Nist Uastepimeakeits apasha tshika tapekumutakenua tapekush nete Strait of Belle Isle mak nete Forteau Point mak Shoal Cove. Tshakap pukunenakanu assi nete tapekush, uesh nish etapaskuanikaiats nete matshama Strait of Belle Isle. Unua apasha uesh peiku mitashimatashimitunnu ashu pitetash statunnu mashat tshika uesh tshaka si tukuea. Unua uastepimeakeits apasha tshika ekatakanua, ashinina tshika apitshitaknau, uesh peikunnu mashat mak peik mashat tshika naspashau. Unua nish uastepimeakeits apasha tshika tapitshitakanu tshetshi naspatakanits uastepimeakeits mak ne katak apash, tshika apitshitakanu, ue peik pikapante peik uastepimeakeits apash.

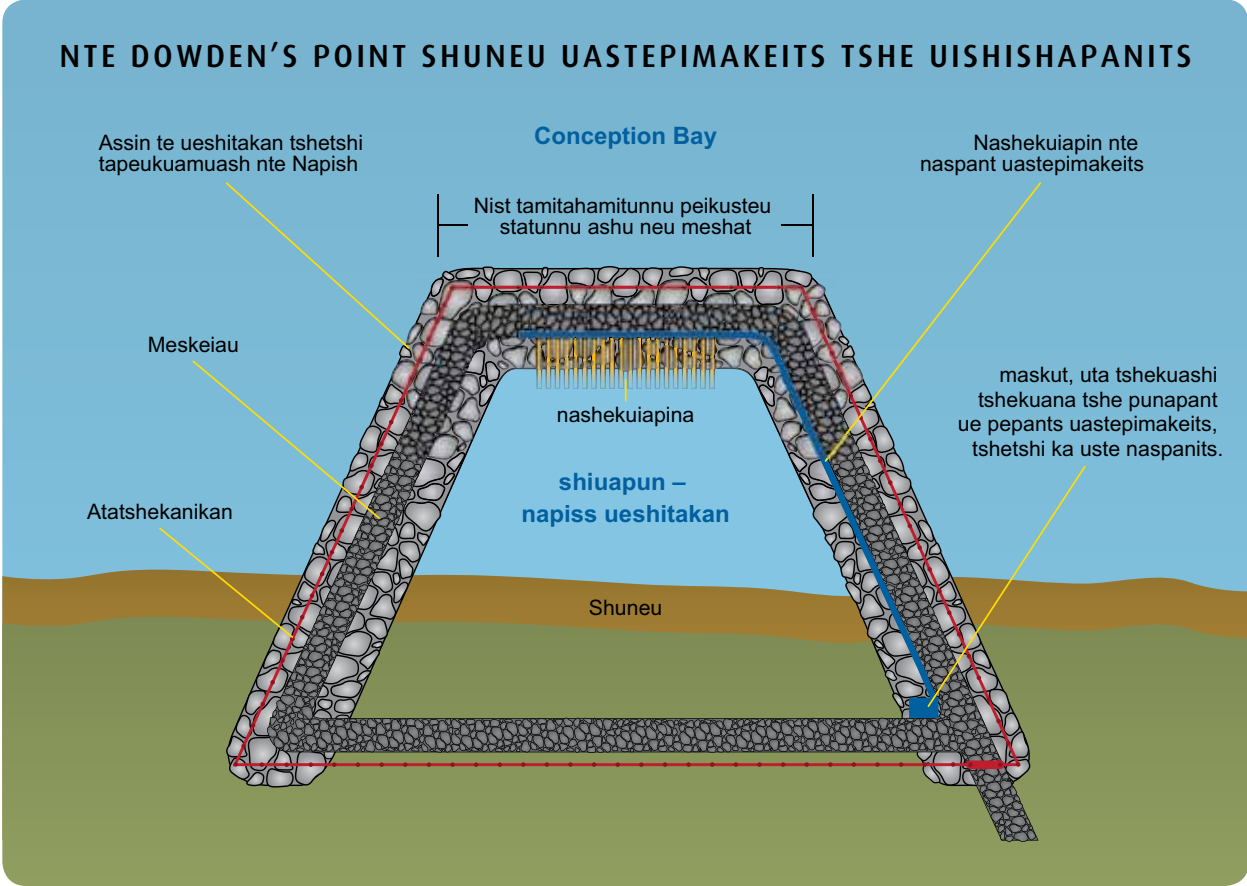


Uastepimakeits tshe uishishapanits

Uastepimakeits tshe uishishapanits, put kie nete etat Uastepimakeits tshika nish ushitakanua, peik nete Strait of Belle Isle nte L'Anse au Diable (Labrador) nete piek nete Conception Bay nete Dowden's Point (Newfoundland).

Unua aastepimakeits tshe uishishapanits nashekua, tshika tshakumutakanua nte tapekush tshetshi apitshitakantshi tshetshi atasemakashi, enu tshetshi Uastepimakeits tshetshi ettu shutshit. Uesh peikunnu ashun pitetash mashat tshika uaiu sitshemetuea mak tshe si tshinaskuashi. Una L'anse au Diable Uastepimakeits tshe uishishapanitshi tshika ushapanua nete mentutshu mak nete tshika tapauetea nete Dowden's Point mak nete Soldier Pond. Una mishiue Uastepimakeits apasha tshika uish stapauestekanua nete Uastepimakeits apasha.







TSHE UISHITAKAN ATUSEUN UASTEPIMAKEITS

Uesh neu puna tshika astaskatanu ue Uastepimekeits tshetshi tshishapan. Tshe Utshimau ukakuseshima tshetshi utineuts katuseshintshi tshetshi ataskatamantshi. Muk ue eshinakush tshika utanakanu tshetshi atuset. Innuts , Essimeuts, Napeuts, Naskueuts mak katakats auentshi uanatutaset tshika minakanuts tshetshi atuset uta ushitakantshi uastepimekeits.

Uastepimekeits tshe uistataushunats

Uesh nish apunu tshika nutshiakanu tshetshi tapauetish Mentutshu mak nete Soldier. Tape kumutakantshi unua Uastepimekeits apasha tshika tuaskuanakanu. Mitshuapa tshika ushitakanua unua tshekuaiia tshe tshakumuakantshi mak tshe apitshitakantshi. Mishiue tshekuan tshe apitshitakan tshika pata kutshitkanua tshetshi minuakueni.

Uastepimekeits apasha

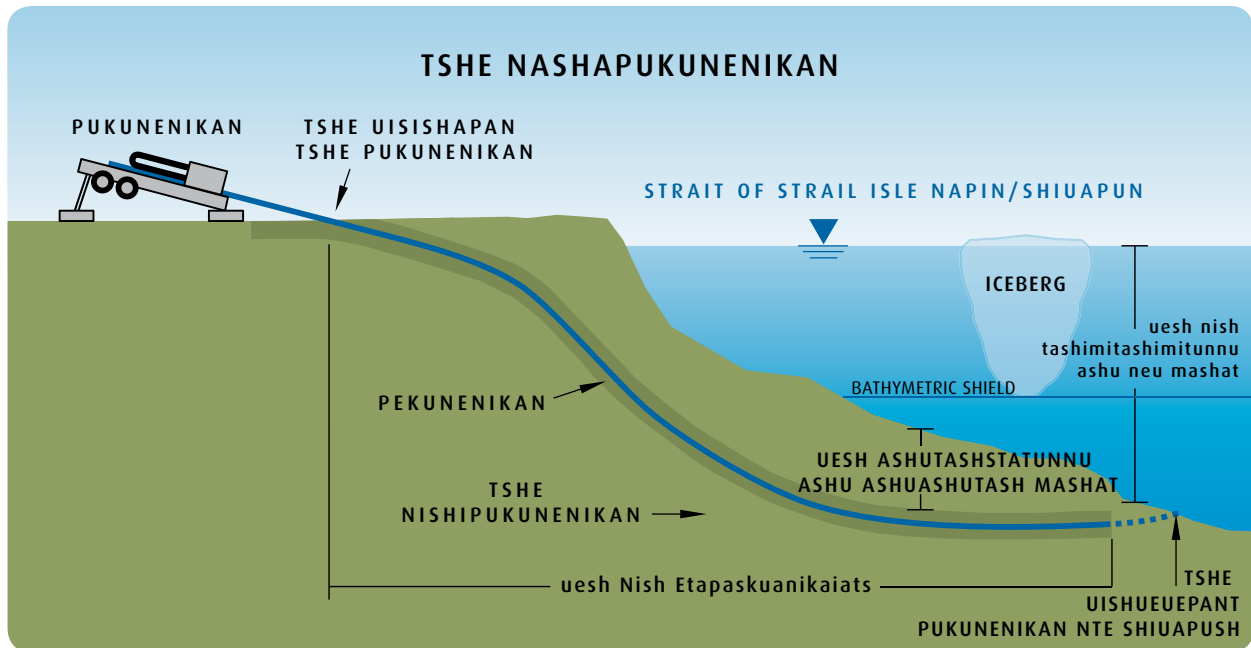
Neu apuna tshika astaskatakanu tapush tshetshi tshistukan ue Uastepimekeits apash. Meskeaua, ashukana, mak mitshuapassa mak tshe napanian nete manaskuash tshika uishitakanua. Tshika atuskuanakanu mak mitshets mitshuapa tshika ushitakanua. Neshekua tshika uapenetakanua, mak tshakatshamatakanua mak uastepimekeits apasha tshika unapekumutakanua tshetshi shushakaputshi. Una uastepimekeits apasha tshika kutshitakanua tshetshi minuakueni.



Tapeskush Uastepimake apasha

Nist apunu tshika nutshiakanu patush tshetshi tshistutakan ue atuseun. Tshika nistau pukunenikanu tapekush tshetshi takuashi Uastepimakeit apasha, peik nete tshika apitshitakanu Strait of Belle Isle. Neu tshika tutakanu ue, mak Ut tshika apitshitakanu enu tapekumuakantshe Uastepimakeits apasha. Nashekuiapin tshika apitshitakan ue tutakantshe nete tshetshi tapekumuashi nete Strait of Belle Isle.

Ashinina tshika apitshitakanu tshetshi ekatakantshi nte tapuekush, tshetshi ka pikapasta Utta papataue. Ut meshat tshika apitshitakanu unua stakantaue ashinina.



Uastepimakeits tshe uishishapanits

Peik kupuna tshika nushiakanu patush tshetshi tshistutakan ue atuseun. Tshika ushitakanu napish enu napitshitakan shiuapun, manamashatshi ashinina tshika apitshitakanua mak nete tshetshi tapaneshinits Uastepimakeits tshe uishishapanits.

Tshe manuhakan Assin

Tshi tshakamutakantshe mishiue tshekuan, tshika tutakanu atuseuna tshetshi manuhakan assin, tshetshi minuats nishinakuash enu ueskats assin kanishinakuash, tshetshi nitautshatshi mitshet tshekuana.

Atakantshe tshekuaia tshetutakantshe

Mitshet meskeaua tshika tutakanua tshetshi naspatamakashi utapan mak tshekuaia tshe apitshitakantshi.

Tshika ushitakanua mitshuapa tshe nipaiantshi. Una kanipaiantshi tshika tshistapanua enu tshi stutakantshe atuseun. Peik kushuap tshika tatina mitshuapa kanipaiantshi.



Pitetash eapishasi astashutshuapa tshika ushitakanua tshetshi papamatapantshi nete tshe atuskan. Pamin mak tamuk tshekuan tshetshi mina stakantshi, unua tshe apitshitakantshi ue uatutakan atuseun.

Ashinina mak neku tshika apitshitakan tshika apitshitakan enu ushitakantaue meskeaua.

Atakantshe tshe nashapapanats

Project Components	Start	Finish	Duration
Mentutshu Uastepimakeits	Pepun Peik 1	Pepun Neu 4	Neunu tatupishumua
Soldiers Pond Uastepimakeits	Pepun Peik 1	Pepun Neu 4	Neunu tatupishumua
L’Anse au Diable Uastepimakeits tshe uishishapanits	Pepun Nist 3	Pepun Neu 4	Peikunnu ashu Nishautash tatupishumua
Dowden’s Point Uastepimakeits tshe uishishapanits	Pepun Nist 3	Pepun Neu 4	Peikunnu ashu Nist tatupishumua
Uastepimakeit apasha ute Labrador	Pepun Piek 1	Pepun Neu 4	Neunu ashu nish tatupishumua
Uastepimakeit apasha ute Newfoundland	Pepun Piek 1	Pepun Neu 4	Nistunnu ashu neu tatupishumua
Tshe pukunenikan ute Newfoundland	Pepun Piek 1	Pepun Neu 4	Nistunnu tatupishumua
Tshe pukunenikan ute Labrador	Pepun Piek 1	Pepun Neu 4	Nishunnu ashu neu tatupishumua
Tapekush Uastepimakeits apash mak Ashinina tshe stakantshi	Pepun Neu 4	Pepun Neu 4	Ashutash tatupishumua



TSHE PAPANITAKAN MAK TSHE MANANAKATUAPATAKAN UE ATUSEUN

Mekuats pepante ue atuseun tshika utinakanuts nistunnu auentshi tshetshi nakutuapatats une Uastepimakeit apasha, uastepimaken tshuapa, tapekush Uastepimakeit apasha, uishapapanits. Katuseshits tshika utanakanuts tshetshi minu nakutuapatats una tshekuai.



Tshe nashapapant

Ue papantshe, uastepimakeits tshishapantaue nete Mentutshu, nete eiapit tapekush mak mate nete tshe naspant nete Soldiers Pond, ekute tshe apitshikanits Uastepimakeits.

Meskuats papantshe, pasish uastepemakeits tshika apitshakanuts tshetshi mushinau papantshi unua Uastepimakeits apasha, tshetshi manapuantshi. Katutakantshe ue, tshaka tshi minupinu tapekush apasha, katutakantshe ue katshi tshapanua mishiue tshekuana.

Ue mishiue tshekuan tshika uishu minu nakatuapatakanua nete mishinanikantshuapish, nete St. John's. nete mishiue tshekuan uishapapantakantshi.

Tshe nashanakatuapatakan

Eshuku mupuna tshika tshitapatakanua unua Uastepimakeits apasha, enu tshika apitshitakanua Uapaniss Uapushats mak kauauastatsheshats. Nanikutani katshi nashanakun tshetshi atumutakan tshekuan.

Tshi nishupuna tshika tshitapatakanua unua Uastepimakeits apasha nete tapekush, enu tshika apitshitakanu ut. Ashinina eaipits tshika minutshitapatakanua. Ama nashanakun tapekush tshetshi ushitakantshi uastepimakeait apasha.

Uastepimakeits tshe uishishapanits katshi apitea mitshet apuna, eku patush tshetshi atanakantshi.

Nete tshe tapekumat Uastepimakeits apasha, ama nashinakun tshetshi nitautshashi tshekuan, uapukuna mak mistukuts. Uesh nish mashats, tshika tuaskuanikanu, enu tshika apitshitakanu tshaputakan mak tshika stanakanu tshekuan tshetshi kanitautshitakantshi tshekuan. Eshuk nishautash statupuna tshika tutakanu.

Pamin tshena shueuepan te assish

Tshe nispaikanits Uastepimakeits mak Uastepimakeits tshe uistataushunats ute mushinau apitshitakanua nete uaiu uatapekumuatakantshi Uastepimakeits apasha. Tshi tshishapantshe ue mak papantshe, tshe pasish tshika uauepinu nte neunish pamin. Ekun eaipits tshika ishinakun, katshi shuka tshe uestakushuts, katshi shuka ueuepanua tshekuan tshetshi unakutash assinu. Mishiue tshekuan etutakan, enkun etusten Tshe Utshimau umishinanikan.





ASSIN TSHE MINU NATUSENITAKAN

Enkun peik mestu tshitapatakan assin, mekuats tutakantshe ue atuseun. Nist tshesuaia tshika tutakanua.

Peik, tutakanipani mishinanikea tshetshi natusenitakan tante menuats assin tshetshi tapekumuatakantshi unua Uastepimakeits apasha mak tshetshi kauinakutat assinu. Ue tshakuan katshi natusenitakanipan, eshinakuashin uapukea, mak eshinankushits aeshishat tshetshi minu senitakanits katutakuts unu Uastepimakeit apashinu.

Nish, Tshe Utshimau ukakusheshima emenipani mitshet auenua enu katutakunua ushitakanits Uastepimekeits apasha. Enu ute uishesenitakan enua etenitakan ue katutakan atuseun.

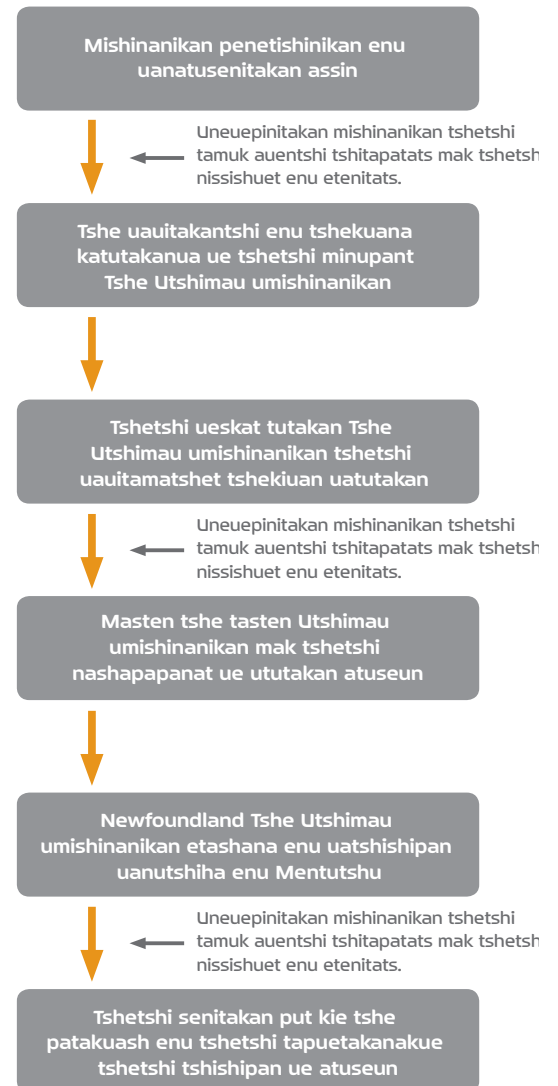
Nist, enu esi senitakan tshakuan, mishiue tshakuanu minakanuts auentshi tshetshi minusenitats tante kaminuanu tshe tshukumutakan ue Uastepimakeits apash. Ue mishinanikan etusten enku tshe nashapapanats mak tshetshi uitshinukuts Tshe Utshimau ukakusheshima enu tshetshi minu nakunits unu atuseunu.



Unua mishinanikea ekuni tutakanipani:

- **Mishinataushunanu:** Tshe Utshimau tutum mishinanikanu enu uatshishipinitats Labrador – Newfoundland Uastepimakeits atuseunu.
- **Mishinanikan etustet enu kanishututakanu assin:** enu mishinanikanu estusten enukun tshe nishipipinats ue tutkantshe atuseun uta Nissi Pishum, pepunits 2011.
- **Assin kanatusenitakan Mishinanikan:** Tshe Utshimau tashanum umshinanikanuau katshi minu natusenitats assinu Espishiminuskueu 2012.
- **Tanapeutakan:** Mamu enishats Tshe Utshimauts tshika mamu uinua senitamuts enu tsehtshi tshishapanits unu Labrador – Newfoundland Uastepimakeits atuseunu mak tshetshi mishiue tshekuanu minustenikue.
- **Kanunats mak Tapuetamuunu:** Tapuetakantshe tshe tshipan ue Labrador – Newfoundland Uastepimakeits atuseun, mitshet kanunats mak tapeutamuunu tshika uiapitshitakanu tshetshi papants ue.
- **Tshe Minu nakatuapatakan:** Tshika ui minu nakatuapatakan ue atuseun enkun eiapits tshika itapanua ukanumua. Tshe Utshimau tshika nashapapanu enu etusten Tshe Utshimaua umishinanikanu tshetshi matshapanits tshekuanu.

Espanat Enatusenitakan Assin





TSHE ANIMUANT MISHIEU AUENTSHI TSHE UAUITAMUAKANITS

Tshe Utshimau uinatusenitamut enu etenitamantshi kataka auenua, mak enu katutakanua, mak kataka tshekuan meshimenitamantshi. Uesh peikumitashimitunnu tatuau animueuts mitshets auentshi enu enatusenitats unu Labrador – Newfoundland Uastepimakeits atuseun. Nishunnu ashu Peikusteu tatuau uishemakanipan tamuk auentshi tshetshi petishinats utanimuanuau ute pepunits 2010 mak penunit 2011. Tshe Utshimau ukakuseshima natusenitamanua mitshet tshekuana enu. Assinu natusenitamuts, innua essimeua, mak kataka kakeshauts uapamakanipan tshetshi petuakanits etenitats. Mishieue tshekuan esishuants, tshika apitshitakanu.

Tshe Utshimau Ukakuseshima mitshets nishiueuepinitau unua tipatshimuna. Uta peik takun tshipatshimun (www.nalcorenergy.com/transmission-project.asp) meshinamatunats, tipatshimun mishinanikea, mak enemakanits katipatshimushits. Mitshet Tshe Utshimau ukakuseshima mitshets tshekuanu tutumanua tshetshi minu ueuepinits utipatshimunau.

Enu Tshe Utshimau umishinanikan etusten, enkun eshipipinits ute Katuseshits tshetshi minu apitshitats enua tshekuaia uatumuakanit, Innua eshasenitamantshi. Mishieue tipatshimun tshika apitshitakanu tshetshi minu pants ue Labrador – Newfoundland Uastepimakeits atuseun.

Tshe Utshimau ukakuseshima uapimeuts mushinau Innua mak Essimeua mak kataka auenua. Tshika minakanuts utshet tshetshi nasishueut etenitats.



ASSIN ESHINAKUASH ANUSHU

Natusenitakanipan assin tshetshi minu apitshitakan mak tshetshi kashuka pikunikan assin. Tshe Utshimau ukakuseshima tshika apitshitaueu Innua, Essimeau mak kataka auenu eshasenitamantshi tshetshi minu apitshitakan assinu.

Neun

Neun, ekun tshitshue espitenitakuash tshekuan tshetshi mishiue tshekuan iniuimakash, Innuts, aeshishats, mak Uapukuea.

Espitaskamakash assinu, neun papasish ueuepanu pamin uta assish ket nte neunish. Newfoundland mak Labrador eaipits tutamuts enu nashipanits assinu.

Ute tshetutakan ue Uastepimakeits atuseun, manauu inanu neun tapiskuts ente mishiue eshinakuash assinu. Ente manamashantshi mitshuapa mak mestu papantshi tshekuana, ama shuka manunakun neun.

Nete minaskuats, ettu ete amashuka petakun tshekuan, muk te tats auentshi tshitshue masta petakun tshekuan.



Assin

Nete etenitakuash pepun Newfoundland, eiatapa tenitakun ute Labrador. Eiatapa nete nitakun nete Strait of Belle Isle eshukumupuna. Uta Labrador etenitakuash ashinin mak assin tamish mak uta ush, eiatapa etenitakun nete Newfoundland. Uta Labrador ettu misheua ashinina, nekau. Eku te Newfoundland ettu mishau asashu mak nekau and ashinina. Assin uipats maskutan. Ue tshe tutuakan Uastepimekeits apash, nanukutini tshika maskutan assin.



Nete Labrador, Strait of Belle Isle, and nete Newfoundland, assin ne eshinakuash, minaskuash, mushuash, masekush, shipissa, mak shipua, enkun te etats mitshets auentshishats.

Uapukuna eiapits minutshitapatakanua, tante eiapits atusemukea. Uta tshe tapekumuash Uastepimekeits apasha ekuta ten meshatshi uapukea mak kataka tshekuan natautshashi. Pashe te takun assin te kanatautshash tshekuan; mushuash.



Tutakanu assi mishinanikan nte etats aueshishats. Tutakanu eiapits assi mishinanikan etukuashi masekua, aueshishat matshetats, mak eshinitautshit uapukuea, tshetshi minuasenitakan ue tutakantshe Uastepimekeits Atuseun.

Manamashatats aueshishats mush, atikuts mak amaskuts. Aiask mitshetu mush nete Newfoundland, muk amashuka tau ute Labrador. Atikuts aiask amashuka tau muk tapue ettu natusenimakanu. Muskuts mishiue te maskuakanu mak eiapits minu natusenimakanu tshe naspanakue.



Katakats aueshishats meniheits, uapastaits, peshu, masheshuts, mak amashuks katshi tauts nete tshe tapekumutakanits une Uastepimakeits apashanu.

Mitshet tauts aueshits pemipants, shishipits, pineshishats, mak katakats katshi te tauts nete tshe tapekumutakanits une Uastepimakeits apashanu.

Mamu Tshe Utshimauts takunua umishinanikanuaua enu tshetshi speuatats uapukea mak kataka tshekuea tante pashe tshash ama shuka taut. Utshe uapukuea mak enua kataka tshekuaia, tauts nte tshe pemakepanits ne Uastepimakeits apashanu nete Shoal Dover. Muk tapeu tshakui tutakanu tshetshi ka pikunakanits. Te tauts Long's braya mak nete Fernald's braya. Aueshishat eiapits uinakanuts, nutshipaustukushishats, mak katakats eshinakutshit shishipits, mak passé eshinakushats tshinakuts, mak ahuuts. Ute eaipits tshe tapekumuash Uastepimakeits apasha, atihuuts.



Napissa, Shipua, mak Napiss

Uta tenshe Newfoundland ama shuka takun napin. Mishiue mishinatakananu tetentshe etuakuash napin mak tante eshakuts mak ueshapan. Shash mishiue tshi minutshitapatakanua shipisha mak napissa nte tshe tshakumutakan uastepimakeit apash.

Uten tenshe Labrador peiku tashimitashimitunnu, pieku steu tatunnu ashu neu shipua mak shipisha mak Kenamu shipu mak St Paul Shipu, uta tapekumuk ute Uastepimakeits apash. Uten tenshe Newfoundland, Nistamishimitunnu ashu pieku steu tatunnu ashu nish tatana shipissa mak shipua, ue tshe tapekumuk ute Uastepimakeits apash. Eten tenshe Northern Peninsula, unua shipissa mak shipua ete takuia uaiu tshe kashuka nukuashi ute etaian. Ute tetauts Newfoundland tshika apitshikanua passe shipua mak



Stantec 2011 ©

shipissa mak ne shipua kanishinikateua Humber River watershed, Exploits River, mak Gander River. Eten tenshe tshika apitshitakanu Northern Arm River, Southwest Brook, Southwest River, Spread Eagle River, mak Witch Hazel Brook.



Ue shipissa napin mishiue natusenitakanu tshetshi minuakue. Minuaua mishiue napina enatusenitakan. Uta tshe pimapuekuamuash Uastepimakeits apash, nishinakun tshetshi maskakan tshekuan tshetshi uinakamitat nipan, enu kanishinitakanua aluminum mak cadmium, enu tshe ushipan nete nashekuiapish.

Eiapits natusenimakanipan nameshats nte tshe tshe pimapuekuamuash Uastepimakeits apash. Tshika minu apitshitakanu ue enatussenimakanits nameshats nte etats. Nishunnu tatishipan nameshats katapan eshinakushats ute etats. Ute ten she Labrador, ettu mitshetuuts matimekuts mak Tshashumekuts.

Muteu, enku eiapits meskuakan ute shipassish mak ute shipash, ente ten tshe tshe pimapuekuamuash Uastepimakeits apash, muk tapue ishinakun tshetshi minu nakatuenitakan ue assin. Ue muteu maskuakanipan ute ten tshe Northern Peninsula.

Shiuapun

Nete Strait of Belle Isle, uesh peikunnu ashu nishautash si tatapaskunekeiau tshe taskamapuetakan ue Uastepimakeits apash. Natusenitakanipan eshinakuash assin nte tapekush mak eshinakushits aeshishat etats. Muskumin eiapits natusenimakanipan, napin espan nekataestetshi mak panapantshi, mak tshishuk. Kuanakanits apitshakanipan mak utanakanu passish assin tshetshi minu natusenitakanu mak eshinakushats aeshishats.

Assin ute Labrador ettu naspakuteu mak nete Newfoundland, uesh nista matahamatunnu mak nete peikusteu tashamatamatunnu mashat essi naspaiats. Ettu nte Newfoundland tapatukuteshu assin, uesh nistunnu mashat sinaspukuetetshe.

Peiku matahamatunnu ashu nishunnu ashu pitetash si tamitshe. Nte tapekush, tshekats mushinau ashiniu, mak maskakanua nishekuaipina, mak passe uta pakuashi. Ue assin, tshaka uitutakanu tshetshi kanutshihakan.

Uastepimakeits tshe uishishapanits nete L'Anse au Diable maskanu nte tamish meskuats ashinin, misheua manamashatshi ashinina, mak mista nekau. Uastepimakeits tshe uishishapanits nete Dowden's Point tshekats mushinau takun ashinina.

Nepin nte Strail of Belle Isle tshekat mushinau ashapanu, tante mushinau tshapanu pemukutshi napin. Nanukutinu eiapits mista nutan pepuashi mak shakuashi. Mestunutashi uta, nanikutini eiapishishashuts kaskaits mak nanikutini mamashatuuts, uesh nishautash mak pusk mashat naspatuuts.

Eten tenshe Conception Bay, mushinau ashapanu tante enku eshinakuash assin. Pepuashi ente namuun uishinutan, eku shakuashi nete naman uishinutan. Kaskaits nanikutini mamashatuuts, uesh nist mak pusk mashat naspatuuts.

Strait of Belle Isle maskutan Pishumuss. Tshe Pishum tshash kuakuuts maskuminats eku uesh Nissi Pishum put kie Uapukun Pishu, tshash apapanu muskumin. Uesh ashutash statunnu mak nanukutini peikusteu tatunnu tatashauts minamashatats muskumin kuanakuuts Nissi Pishumua mak Uapukun Pishumua.



Natusenitakanipan eiapits tapekush enu tshekuan tshetshi petakan nete Strait of Belle Isle. Pistepinitakanu tshekuan penetakan nte tapekush. Nish tshe shamitashimitunnu, nianeu tashamitashimitunnu, ashu peikuste tatunnu tshekuan petakanua, Peik tshe shamitashimitunnu, peikusteu tashamitashimitunnu, ashu peikunnu petuakanuts aueshishats.



Kanukuea apitshitakanipani tshetshi minu senimakanits aueshishats etats, mak eshinakuashi tshekuaia natautshashi. Assa siuiapin mak kataka tshekuan maskakanua natautsha tshi nte tapekush, eshuuts, papametueuts, mak eiapits ueushuuts, katakats nameshats, tshashumekuts, shushashuts, mak matimekuts nete Strait of Belle Isle enu emushuamantshi mak ekuspamantshi.

Nameshats eshinakushat nete Conception Bay tauts papametuteu, mitshet tamuk eshinakushats maskuakanuuts mak eiapits ueushu.

Peikunnu ashu nianeu tatashuuts meskuakanits nte tshe pamapekumuts Uastepimakeits apashanu, mitshet tamuk eshinikatakanits nameshats mak papemau ishinakushuuts.

Eiapits natusenimakanipan manamashatats aueshishat, mastamekuuts, kaishapanashats, mak ashukuuts nete Strait of Belle Isle mak nete Conception Bay. Uesh nishinnu katapan eshinakushats uapamakanipan napanits. Mishinatauakanipan esi uapamakanits katakats. Uapamakanipan katapan eshi nakushats mastemekuuts

mak pamemau eshinakushats kataka aueshishat ute Strait of Belle Isle mak nte napish Newfoundland mak nete Conception Bay.

Enatusenimakanit paneshishats mak kataka auentshi kapaminautshi. Mitshetipan meskuakanits mak papemau eshinakushats mak eshinikatakanits, passe shishipits, tshinakuuts, muakuuts, mak shesheshuuts.

Mishinatanikanu ete meskakantshi ustanuaua mak nte ueshipinits. Utshe passe meskuakanits tshinaskuuts, nutshipaustukushishats, mak kataka shishipits.





ASSISH TE ETAIANTS

Etaiant, ute tshe takuash Uastepimakeits apash, tshi tapatakanipan mak tshetshi senitakan tshekuan tshetshi minu apitshitakan enu kaneshuauitshinukuuts auentshi nte etats mak tshetshi kashuka pikuanikan assin.

Eshanemetakan mak Etapitshitashunats

Natuasenitakanipani ente tshetshi nametauakue tamuk auentshi nte tshepamapekuamuash uastepimekits apash (natusenitakanipan uipats tshetshi tanakue, mak tshetshi uipats tatauakue aueshats mak enua katakana tshekuaia tshetshi nashitshitapatakan menuats mak tshetshi issishuemakash, tanipan uta assish. Uta mishiue meskakantshi tshekuaana, uta nametakan, enkuta kapamapekumupan ue Uastepimakeits apash, mak maskanu nte uipits auentshi namestats, uesh nianeu tshe shamatashimitunuepanipan essi nametats uipits auentshi. Nastesh ama skakanu tshekuan ute napish tshetshi nametats auentshi. Mashinatanakanua mishiue uta assi mishinanikanish essi maskakantshi enu uipats auentshi nametats mak tshika minu apitshitakanu ue tshekuan meskakan.

Mitshets senitakuea etuashi nte uipats auentshi etats mak uipats eshiniuts nte Labrador. Muk unua katshi takuna ute tshe pamapekumuts ue Uastepimakeits apash. Nete Newfoundland, mitshima Chapel Arm maskanu uipats tshekuan espitenitakuashi, enu uipats eshinakushats nameshats, muk tapuetakanu tshetshi kanutshihakan ue assin mak mishinatakanu assi mishinanikanish tshetshi tshakumutakan ue Uastepimakeits apash.

Utenaua

Ue Uastepimakiet apash tshe tapekumaush ute mitshets Labrador, mak nete Northern Peninsula, Newfoundland mak nete the Avalon Peninsula. Takuea nete Utenaua nte matshima tshe tapekumuash ue Uastepimakeits apash. Ue tshe apitshitakan assin nete ispinu mak matshama: Forteau, Shoal Cove East, Savage Cove-Sandy Cove, Nameless Cove, Flower's Cove, Grand Falls-Windsor, Port Blandford, Clarenville, Goobies, Sunnyside, Arnold's Cove, Southern Harbour, Norman's Cove-Long Cove, Chapel Arm, Whitbourne, Blaketown, Avondale, Harbour Main-Chapel's Cove-Lakeview, mak Holyrood, ke ishinikateuani Utenaua.

Tshetshi minusenitakantshi unua Utenaua, Tshe Utshimau mishiue tshekuanu natusenitamupan, etatashanants, eshinakunits assinu, tshekuaia tshe metetshi, tshekuaia napitshitakantshi (utapan meskeiu, napin, kamakueutshiuap) mak tukutshuapa, mak katakana mishinanikantshuapa, tshetshi minu senitakan enu tshekuan etenitats. Mitshets uapimakanipan auentshi mak mitshetuuts auentshi tshekuanu essishuet.

Tshe nashuniashepan

Ute Newfoundland mak Labrador, senitakunipan peik tshekuan, enu kashuka etukuash tshekuan tshetshi nutshihakan enu tshetshi shuneashets auentshi. Pepun 1980 mak 1990, ettu tshekuan ama manunakunipan, enu tshe panikan Kanutimeshant. Muk tapue katak tshekuan takunipan tshetshi minunakuash. Pamin maskuakanipan nte tauts mak mista maskakanu ashinin nete Labrador. Katak tshekuan minupanipan, Uastepimakeits nutshikuakanits, nutimeshants, tshe maniskant, mak uapatinuants eshinakuash assin.

Pepun 2009, mitshenipani tshekuana tshashipinitakantshi ute Newfoundland mak Labrador. Uesh peik put kie neunua



ukakuseshimuaua. Enu etutats taueutshiuapa, kataka tshekuan pepenitats, mishinanikantshuapa mak mestukunapeunanits.

Natusenitakanipani mak minutshitakapatakanipani atuseuna mak etatashi enua katshi apitshitakanu uta ushitakantshi ue uastepimakeits apash. Enku patush katshi minu senitakanu tshekuan tshe apitshitakan ue tshishipinatshe ue atuseun uta Newfoundland.

Assin etapatshitakan

Assin etapatshitakan ute mishiue Labrador mak nete Newfoundland, mitshet tshekuan apitshitakanipan, tuiananu, nutemashanu, nitautshitakanua tshekuana, tshamanaskanu, mushunanu, utapanissa/uapushashats, uta mak pepamutants. Mitshets mitshuapa tshamatakanua nete assish nte tshe pemapekuamuash ue Uastepimakeits apash. Mitshetuts Innuts, Essimeuts mak kakeshauts enu napitshitat assinu.

Tshika pimapekum ue uastepimakeits apash nte etats atikuts, mushats, muskuts, pashuts, katakats aeshishats mak tamuk pineshishats peminats. Tshika eiapits taum nete mitshama shipishish ete nameshats.



Mitshets takuana assina enu nash kuestishan tshetshi nutshihakan tante nispitenitakea, ama tapekum ue uastepimakeits apash. Ente tenshe Newfoundland, tshika apitshitakanu espitenitakuash assin enu keishinikateuani; Main River Waterway Provincial Park Reserve, the West Brook Ecological Reserve, the T’Railway Provincial Park, Jack’s Pond Provincial Park, Hawke Hills Ecological Reserve, mak Butter Pot Provincial Park.

Natusenitakanipan assin mak kataka tshekuan tshetshi uniuatakantshi esk nash eka tshishipinats. Unua natusenitakanipani:

- Tshe papantshi tshekuaia
- Etuiunats mak aueshishat menuapitshakanits
- Tshekusiunt nameshats
- Innuts mak Essimeuts utassiuau katapitshitashuts
- Kakusheu mitshuapa
- epapapatunats utapanissa put kie uapushashats
- Mitshuapa tshe unitshimitakantshi tamuk auentshi tshetshi apitshitats
- assin tshe ushitakan tshetshi metuants
- assin tshetshi tapan nastakan tshetshi kanita minuats nutshihakan
- mistukuts tshe namanaskan
- pamin etuapamakan nte tamish assish
- natautshitakantshi tshekuana

Assin tshe nashanuapatanuants

Ue atusenun assin tshe nashanuapatanuants tshitshi nispitenitakun nte Newfoundland mak ute Labrador. Mista shuneashepanu, katshi tutakanu tshetshi mitshet tshekuana tutakantshi atuseuna, tshetshi put papamutakanuts auentshi, tshetshi natshukusets, tshetshi papamaunakanits, mak put kie tshetshi shuaueits. Pepun 2010, mista mitshetipan auentshi muskutaset unua etatakanitshi atuseuna.

Mitshetipan auentshi espanits nete Labrador tshetshi natshikusets tshakumekua mak tshetshi ispinits nete Red Bay mak nte Battle Harbour. Mitshets eaipits takuna tshekuana tshetshi uapatinuantshi nete Mealy Mountains National Park mak nete Eagle River Waterway Provincial Park.

Nete Newfoundland, misheua eaipits tshekuan tshetshi uapatinuants nete Gros Morne National Park mak L'Anse aux Meadows National Historic assish. Muk tapue unua papanua napashi.



Tshekuaia tshe nashitshitapatakantshi

Ue tshetshukumutakan Uastepimekiets apash, nete uaiu nte tshika tutakanu nete tshetshi kashuka uapatakan. Nte nutshimits tshika pamapekumutakannu nete minaskuats, mushuauash, masekush, man te tahush. Mitshet meskeiats tshika takuna mak matshama utenash. Ue assin tshe apitshitakan tshe pemapekumash uestapimekeits apash nte tshekats mushinau tshika takuana shuneau, nte matshama shiuapush, nte Strait of Belle Isle mak nete Conception Bay. Tshika eiapits tshika tamuu nete napisish mak shipua, peik nete shipu kanashiniateua Kenamu, Portland Creek, Birchy Lake, mak Exploits River. Mak nete tshika pemuu tahush, mak nte assish menu apitshitakan assin.

Shiuapush Nameshats

Enutemeshant nispitenitakun ue, ute easpetanitamut tshetshi inniuts mak tshetshi minu apitshitats unu inniunnu enutameshanits. Mitshetupuna auentshi nutamesheuts, papemetuteua, kaskemekushats mak enua kataka nemeshats mak napish aeshisha

tshetshi shuneau shets mak tshetshi minu inniuuts. Esk ettu tshika nutameshanu katakats aeshishats mak tapekush aeshats tante enkun eiapits naspitenitakun tshetshi maskakan katak inniun. Ashukuuts eiapits nutshikuakanuuts pepunitshi. Mitskets tshekuan tapitshitakanua tshetshi kastinakanits aeshishats. Pepamatuteuts apitshitakanua tshekuna tapiskuuts eshinakunitshi ustukuanakea, mak kataka tshekuan apitshitakanua katakats aeshishat tshetshi kastinakanits. Nameshats uinuau apatshanuuts aiapinats mak passe kamamashauani utta, muk tapue enutameshantshi, utta espishatshi apitshitakanua nistunnu ashu pitetash stannu meshat.

Nte Strait of Belle Isle tshe tapekumuash uastepimakeits apash, ekuten te tshitshue mashetats kanutimeshats muk tapue tshapanakanu enutemeshant. Kanutimeshats nete etats Strait of Belle Isle ekute eiapits tshe pemapekuamuash ue uastepimakeits apasha, muk tapue ama tapue takanu tshetshi nutameshant. Ekute ute natshetats ueushuuts.

Ama senitakun tshetshi innuts put kie essimeuts tshetshi nutaseshets uta tshe tapekumuts una uastepimakeits apashanu.

Kanutimeshats nete Dowden's Points nutshikueuts kaskemekusha, mak kataka namesha etantshi. Tapuetakanu eiapits tshetshi pasish akuskant nte etats matimekuts mak ueeshuuts.





Stantec 2011 ©

ASSIN KANISHINAKUN UE USHITAKANTAUE UASTEPIMAKEITS

Tshe utshimau tshika papanitau unu atuseunu tshetshi minu nakutuenimats uitshinnua mak esk ette auassits. Tshika maskumuts eiapits tshetshi kapikunats assinu. Enu etusten umishinanikan tsheutshimau enkunu tshe nashapapanits tshetshi minu apitshitats assinu. Maue peik, natusenitakanipan tshetutakush nameshats mak katakats aushishats. Tshika apitshitakanu menuatshi tshekuana tshetshi kanastesh piuenitakan assin mak tshetshi minupan ue tshekuan uatutakan.

Enu etusten Tshe Utshimau umishinanikan make enu eshuitamuakanits enkunu tshe nashatutakan ue atuseun tshetshi kapiuenitakan assin. Maunua tshekuaia natusenitakanipani.

Neun

Tshekuaia tshe apitshitakan nete tshe tuskan utapana mak mitshet tshekuana pepentshi tshika uitakanua tshetshi kashuka mista apitshakan pamin miskuts tshetshi kashuka uinakutakan assin mak neun. Ue tshishapentshi tshika uitutakanu tshetshi kauinatutakan neun, enua napitshitakantshi utapana mak tshetshi mushinau natusenitakantshi utapana tshetshi minuapantsi.

Meskuats ushitakantshe ue uastepimakeits apasha, tshika tutakanu tshetshi kashua mastepetakushi tshekuana nete etuskan. Katshi tapue tsheuetakushuts katshutshits mak pakunenikea mut tshika uitutakanu tshetshi kashuka tshe uetakushats etuskantsi. Mekuats papantshe ut uastepimakeits tshika tapue petakushuts pepantau, enku

muk eshapapanits. Papantaue tshekuaia tshaka uitutakanu tshetshi kashuka masta petakuash tshekuaia.

Assin

Uapukea mak kataka tshekuana tshika meianakanua / tuaskuanakanu tshetshi manatshamatakantshi tshekuana tshe apitshitakantshi enu uatshukumutakan uastepimakeits apash. Mistukuts tshika manuakanuuts. Shipissa, tshika tutakanu tshetshi kanutshihakan passe assin tshetshi minunakuash. Assin etuakuanikan tshika nashanakutakanu enu tshetshi minupant ue uatshukumutakan uasptemakiets apash.

Enuu massekua mak uapukuna espitenitakuashi tshika uitutakanu tshetshi nutshihakantshi. Esk eka tshishipitants, Tshe Utshimau ukakuseshima tshika senitamanua tante etukunitshi enua tshekuan espitenitakunitshi. Mak enu assin katshi, etuaskuanakanits, tshetshi minuats nitautshitakanits mitshets tshekuaia.

Tshika uitutakanu tshetshi minupant ue tshakumutakantshe uastepimakeits apash, ue peik tshetshi ka nitautshashi tshekuan matshama tshekuana tshe tshamatentshi tante nitatshatshe tshekuana katshi tutum tshetshi astepanits uastepemakeits. Ashakaua put kie uapukuna nitautshashe ute matshama uipats tshika tshaputakanua. Nete uinuau shipissish, tshika apitshitakan tshekuan panapatakan nete matshima assish tshetshi kanitautshashi ashakaua, muk tapue tshaka uinatutakanu assin.

Tshe Utshimau tshika uitshatasemeu kastatahuentshi kashuka ustaskuakanits atikuts. Ue uastepimakeit atuseun, ama tenitakanu tshetshi ustapininukuts atikuts tante senimakanuuts atikuts tshetshi kamatshama tats ute meskuats etuskanits. Tshi tshakumutakantshe ue apash, ekuta patush katshi tutikuanu. Passe utshe atikuuts, nakatuenimakanuuts tshetshi kanapakanits, ekunu tshe apitshitats Tshe Utshimau tshetshi kashuka ama statuka meskeaua, muk unua tutakantaue meskeaua, katshi shuka pikunakanu tshekuaia uta matshama natautshatshi mak tapue tshekuaia uipats tshika nitautshea.

Passe aueshishat tshika unitauts umitshumuau ue tutakantshe atuseun. Uapistai tshika eiapits passish



ustapaninuku tante katshitana kataka aeshisha. Tshika kutshitakanu tshetshi kanutshihakanit assinu nte Uapistai etat. Tshika uitshatesemakanuts Kastatiuests tshetshi tutakan tshekuan enu tshetshi kashuka tutakan ustapiakan ute aeshish; uapistai mak ten tshekuan uatutakantshi nte etats tshika uinuau mamitunenimakanuts.

Paneshishats etats tshika uitutakanu tshetshi kanutshihakan. Tshika tuaskanikanu puashe tante tshaka tshitauts paneshishats. Ustana meskakantshi, naku ten tshaka tuaskanakanu mak ten meskakantshi ustana nte matshama shipissa tshika tutakanu tshetshi kanutshihakan mak tshika tutakanua tshekuan kanutshihakan ue assish.

Ue tutakantshe uastepimakeits apash mak enu tshekuana, tshaka tutakanu tshetshi kanass uipikunikan assin nte matshama tshekuan natautshashi.



Nishinakuun ue, natautshshi tshekuaia make etats aeshishats meskuats ue tutakantshe atuseun, tshetshi pikunikan tante tshakaui tutatum utatuseunuau katuseshits enu enakutuapatats tshekuana muk tapue tshika uitutakanu tshetshi kashuka masta pikunikan assin.

Napissa, Shipua, mak Napiss

Tshaka minuauuts kanunat tshetshi mamupanitakantshi shipissa, tshetshi ushitakantshi ashukea, mak tshetshi munakan assin tshetshi minupinitakan napin, tante katshi pikuapauue meskeau. Ue tutkantshe atuseun katshi tutakanu tshetshi uinakamitakan napin mak tshetshi kauinakuash assin. Ue tshe tshukumutakan mak kataka tshekuaia tshetutkantshi. Katutakanu tshetshi uipats nipin mak assin tshetshi astepan enu uanakuash. Tshaka apitshitakanua tshekuan tshetshi uipats kashinakan assin, pamin ushukutshe.

Atuskantshe, tshaka apitshitakanu tshekuan tshetshi kanitautshashi ashakaua mak uapukuan nete mastsha epemuapekumuash uastepimakeits apash. Ue, tshika tauts auentshi tshesenitats tshe nashatutan enu eshatutakanits. Ue tshekuan tshe apitshitakan,



amaka tshiapitshitakanu nte matshama shipissish mak nte matshima etukuash napim. Meskeaua tshe apitshitakantshi ue tshakumutakantshe Uastepimakeits apash, tshika minu apitshitakanu tshetshi nakutuapatakantshi napissa, mak shipua, tshetshi minu natusenimakanits nameshats, matimekuuts mak tshashumekuuts. Unua maskeaua tshika uitutakanu tshetshi uipats nitautshashi tshekuana.

Shiuapun

Strait of Belle Isle kanishinikateua, ekute tshe tapekumuash uastepimakeits apash nete tepekush mak nte shuneu tshika takuaia tshekuuia Uastepimakeits tshe uishishapanits nete shiuapush.

Katshinishinakuun tshetshi pikunikan tapekush assin ue tshakamutakantshe ue uastepimekeits apash, tante tshakaapitshitakanu pukunenikan tshetshi tshatukutakantshi unua nashekua. Enu tshekuan penpants tshe apitshitakan tshika tateuepanu, eku katshi pikunuum assinu mak katshi uakamukuuts passe aueshishats, eku miskuts katshi nakatamuuts uta natautshits. Manamashatshi ashinina tshika apitshitakanua tshetshi patastanikantshi unua nashekua tante tshika apitshakanuuts kashutshits tshetshi stakantshi unua ashinina, muk tapue peikua, eku miskuuts tshika minuats mak katshishuka mista ashapatakanu assinu.

Meskuats papantshe ue uastepimakeits apash nete tapekush, tshika passish ueuepanu pamin mak kataka tshekuana, tshetshi miskut tshetshi kanitautshashi tshekuan

uta matshama nashekush. Matshama tshekuaea natautshashi ute nashekush, uta Uastepimakeits tshe uishishapanits, enkutata muk tshe tshi uastapininukuts tshekuaia natautshashi.

Tshe Utshimau ukakuseshima tshika mushinau nakutuapatuum enua eshiueuepanitshi tshekuaia uta etakunits nashekunu mak tshika mishinatamuuts tshetshi esk ettu minu apitshitats, enu tshitapatakanitshe tshekuana ute napish.





KATUTAKUTS AUENTSHI ETE ETAPATSHITATS ASSIN

Eshanemetakan mak Etapitshitashunats

Tshe Utshimau katshi nutshikum assinu te meskakanitshi espitenitakunitshi, mak esk eka tshishipinanits tshika mishinatamuuts unua assi mishinanikanish tshetshi kanitshihakanitshi. Uta mishiue tshika mishinatakaninua auentshi nemetats mak tshetshi apitshakan Tshe Utshimau tshetshi kanitshihakanitshi.

Una kanutshihanitshe assina te nemestat tamuk auentshi, ettu tshika minu piminu ue tshaka mutakantshe uastepimekiets apash mak tshetshi kaustapan.



Utenaua

Mishiue katuseshat tshika napekuakanuts enu mitshuapa tshe papamatanpantshi. Katshi takuna kataka tshekuana tshe apitshitakantshe; kaskutimatesheutshiuapa, tshe metuants, mak kataka mishinanikantshuapa. Muk tapeu tshakatauts tuhuniskueshats, kaniskutuets, mak kanakutuapatsheshats ente tshe taiants. Tante mak katshi shuka takun tshetshi nashinakuash tshekuan.

Katshi shuka tapuetuakanuuts katakat auentshi tshetshi mupant tshetshi tshakau mamutuenitamuuts utatuseunuau. Natusenitakanipan tshetutatshet ute atuseun enu



tshatapatakantshi utapaia, muetshish, tsheminupinitakantshi tshekuan mak tshetshi minupiniakanits auentshi. Ama nashanakuun tshetshi tshetsh ustapininuet nte tamuk utenash/utenaua.

Ue tutakantshe ue uastepimakeit apash atuseun, katshi shuka nukan tshetshi uistapininukuts utenaua.

Tshe nashuniashepan

Ue tshishapantshe atuseuna, neu apuna tshika ataskatakanu, ue nish puna tshika nutshihakun tshetshi ushitakantshi tshekuan tshetshi piminupantshi. Unua mishiue atuseuna, tshika mishiue minupininuku auentshi etutaset, muk uta uitutakanu tshetshi minupiakanits auentshi etat uta Newfoundland mak Labrador, mak passe etat nte kuesteshe Canada.

Papantshe ut atuseuna, mitshet auentshi tshika mitshetuts auentshi tshetshi uauitshinukuuts unu. Tshishapanantshe katshi shuka tauts mak katshi shuka takuna tshekuana, muk nte esk ette papantshe, ekuta tshe nukuashi tshekuuia tshetshi uauitshinukuts auentshi. Ute uitutakanu tshetshi minuapiakanits auentshi ute etats Newfoundland mak katakats auentshi eiatapa ueshits kuesteshe uta Canada.



Ue tshekuan tshetutakan, uta tentshe uashihakan uastepimakeits apash, kashuka metanitakan tshetshi ustapinitakanua kataka atuseuna.

Assin etapatshitakan

Mitshetuuts auentshi napitshitats assin, innuts kametuants, etuiunants, mak tshetshi shuneausheants. Ue papantshe uastepimakeits apash, katshi puk nashanakuun tshetshi unitakantshi unua etapitshitakan assin, tante tshika pamapekuum ue uastepimakeits apasha. Tshe Utshimau tshika skutshitau tshetshi kanishinakunits unu mak mushinau tshika ueuepinitau tipatshimunu. Tshika tutakanu tshetshi kamatsha pamapekumuash ue apasha uta tekunitshi mitshaupa mak matshama etapitshitakan assinu, tshetshi kapunipanats enu etapitshitakanits assinu.

Ute tshe tshakumutakan ue uastepemakiets apasha, tshika ushitakanua meskeiaua ute Labrador, mak unua passe katshi minu apitshitakanua.

Ue tutakantshe uastepimakeits apasha, meun tshetshi punipan tshetshi apitshitakan assin, esk katshi apitshitakanu.

Assin tshe nashanuapatanuants

Ue tutakantshe atuseun, katshi ustapinitau passe atuseuna, tante takushipantshe nte tshe kumutakan ue uastepimakeits apash, utshe katuseshats tshaka tshitapuetakanuts tshetshi tats mak tshetshi napats nte kanipaianitshi mitshuapa, eku mikuts tshetshi ka ustapinitats unua kataka tshekuana penpanitshi. Kakutshitakanu tshetshi kavitutakan ue tshetshi nashanakuash mak tshika uapamakanuts auentshi penpinitats unua atuseuna tshetshi ka tamuk tenitats.

Katshi eiapits ustapinitau kataka tshekuana pepenitshi, katshi put nakaum, tshetshi passish tshapanakanitshi enu tshekuana napitshitakanitshi, uta put, utapana. Muk tapue tshika uitatakanu tshetshi kaishinakuash ue.



Ue atuseun, passish muk tenitakanu tshetshi ustapinitats tshakuan, enua kataka etutakanatshi katakat uashuneashets.

Tshekuaia tshe nashitshitapatakantshi

Uenua tshekuana unapatakantshi, passe auentshi ama nita unikuatamuts mak enu etenamuts. Tshe Utshimau ukakuseshima tshash tshi uapatamanua mitshets eshinakunits mak eshinakuitshi tshekuana nete tshe pamepekumunts unu uastepimakeits apashinu, muk tapue passe tshika uikustishanu assin tshetshi kapikunikan. Muk tapue tshika apitshitakanu assin etenteshe utapanimeskeaua etukuashi, tshetshi pemapekuamuash ue apash. Mak passe nete naka tshika tshakutanakaua nete uaiu tshetshi kauapatakantshi.

Tshe tshamanaskan enu tsheuishitakan tshe tshamatentshi naskekua mak kataka tshakuan tshe apitshitakantshi, tshika eiatapa issshinakun assin, ent tenshe etats auentshi. Nte passe, katshi shuka nukan tante tshakakushinut nete minaskuash, tahuush. Unua nashekua tshika tshihakuea espash papants ue atuseun.



Unua tshekuana menunakuashi tshapatakantshi, katshi shuka pashau tshetshi ustapininuets ue pamapekumutakantshi uastepimakiets apash tante uaiu tshika tshakumutakanu. Muk tapue issshinakuashe, tshika uitutakanu tshetshi kashuka matenitakuash.

Shiuapush Nameshats

Passé nte assish mak nte shiuapush, tshika isshinakun tshetshi ustapinitats enu enutameshanats, tshetshi tshika uitutakanu ue atuseun nete Strait of Bell Isle. Tshika tutakanu tshetshi minanakanits auentshi tshetshi nutameshets, eiapits tshika uitutakanu nete etukuashi utenaua, tante ashutash statu pishumua minuanu tshetshi nutameshants. Tshika uapimakanu kanutameshets nete Strait of Belle Island assish mak kante kueteshe tshetshi tutakan tshekuan tshetshi kashuka ustapininuet.

Passish shuka tenitakanu tshetshi matenitakuash ue ishinakuashe.





TSHE MINU NAKUTUAPAKANT MAK TSHE MINUATS UAUITAMAKUNEUK

Tshaka tutakanu tshetshi minu nakatuenitakan assin ue papantshe atuseun mak tshetshi minu nakatuenimakanits auentshi te etats utenuash. Tshika tutakanua tshokuana tshetshi uapatakan ue atuseun tshe minupants tshishapantshe mak tshe minu nakatuapatakan assin. Tshe Utshimau ukakuseshima mak katakats auentshi tshika uapatamuts unu tshetshi nash tshistutakanits unu tshe pamapekumutakanits Ustapimakeits apashanu.

Enu Tshe Utshimau umishinanikan etusten, enkun tshe naspanits mak tshetshi uapatats tshokuaiia tshe kauinakutakanits assinu. Tshe Utshimau tshika tutam enu tshetshi uinakutakanits assinu, muk tapue ishinakunitshe tshetshi uinakutakan assin, tshika uitutakanu tshetshi manuhakan assin mak tshetshi kaminuats ishinakuash.

Unua tshokuan tshe tukanatshi, Tshe Utshimau ukakuseshima tshika ueuepitanua mishinanikanu enu mishiue tshetshi uauitats tshokuan tshe nashatutats. Ue mishiue tshokuan tshe nashatutakan tshika uisenitakanu tshenashatutakan esk eka tshishipinats ue uatutakan uastepimakeits apash.



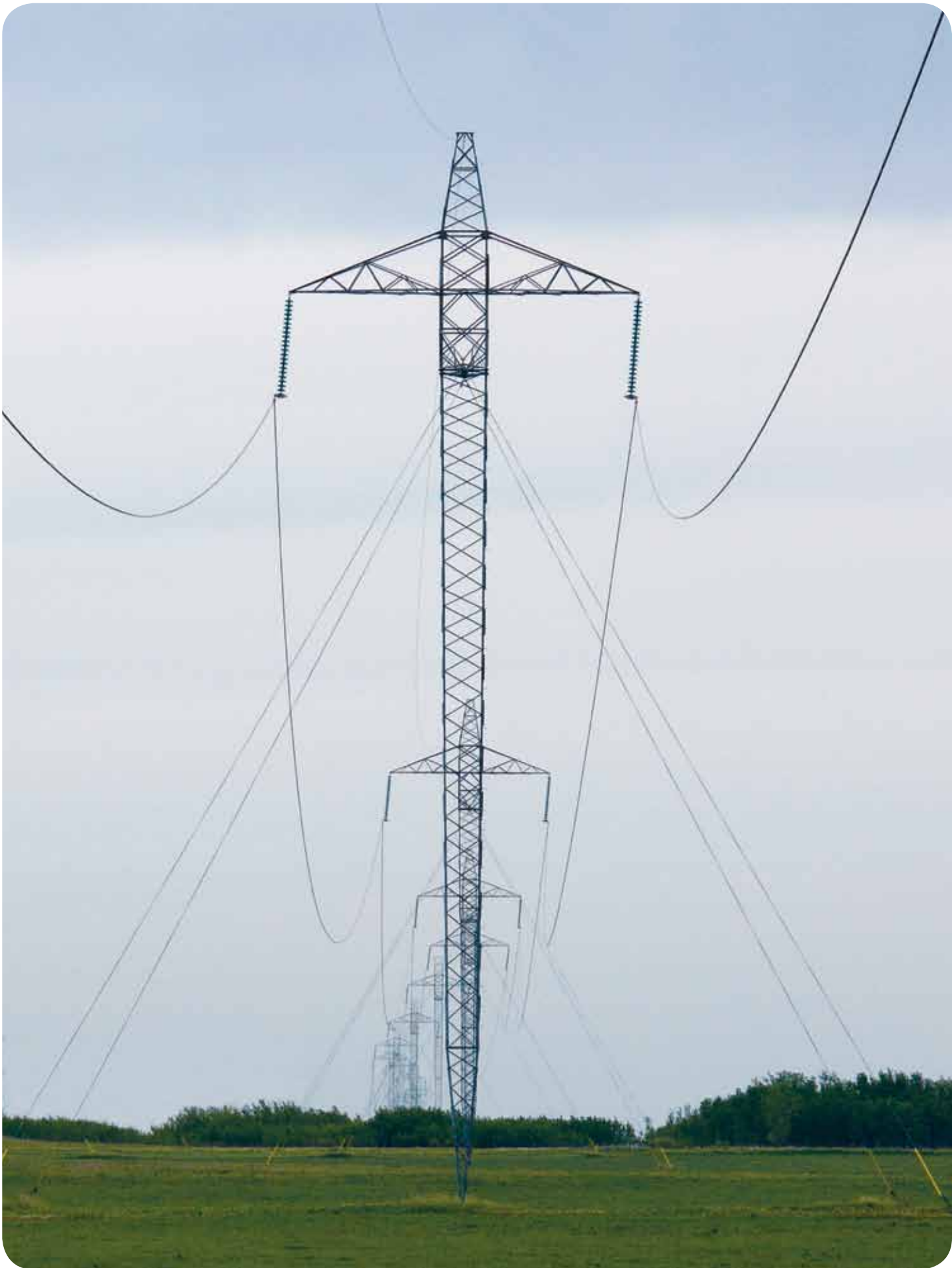


MASTEN

Ue uastepimakeit apash mak Labrador – Newfoundland Uastepimakeits atuseun enu ututa Newfoundland Tshe Utshimau, enu tshetshi minunakutat mak tshetshi tutat tshekuan tshetshi mitshet apitshatakanitshi uastepimakea. Enkun enu tshetshi ishishuemakash enkunu etuenitats mitshets auentshi, tshetshi mushinau tats uastepimakeits. Mak tshetshi kashuka mista apitshakan pamin, enu tshetshi uinakutat neunu mak tshe tshi uinakutat assinu. Ue papantaue uastepimakeit katshi shuka animashiuts esk ettu neush. Mak ue atuseun tshika mista uauitshinukuuts auentshi uaiapitshiats unua uastepimakea ute Newfoundland mak Labrador.

Tshe Utshimau natapasteuepan Innua, Essimeua, kataka auenua enu tshetshi minupatuants essishuentshi mak etenitamantshi. Tshe Utshimau tshika mushinau papanitats tapuenitamuunu enu tshetshi natapastuakan, papanitshe tshekuaia enua uestuenitakanitshi. Tshe Utshimau tshika minueu eiapits tshetshi uapamakan, tshetshi petuats tamuk auenua uanisishuentshi.

Tshe Utshimau mitshet tutamupan mishinanikea enu enatusenita mak kataka mishinanikea tshetshi uauitshinukuts unu uatshishipinitats Labrador – Newfoundland Uastepimakeits atuseunu. Tshika eiapits tutum tshetshi minupinits tshekuan uatutakanits nte tshetshi kapikunikanits assinu, tshetshi ka uinakutakanits assinu. Mitshet tshekuanu tshika tshishipinitats tshetshi uapatats enu tshetshi kamatshanukunits unu etatakanits Labrador – Newfoundland Uastepimakeits atuseunu.





Nalcor Energy

Hydro Place, 500 Columbus Drive

P.O. Box 12800, St. John's, NL

Canada A1B 0C9

T. 709.737.1833 or 1.888.576.5454

F. 709.737.1985

nalcorenergy.com/lowerchurchillproject

twitter.com/NalcorEnergy

facebook.com/NalcorEnergy

youtube.com/nalcorenergy

nalcorleadershipblog.com; nalcorblog.com

