



KA UI  
MISHITUEPANITAKANIT  
NANIMISSIU-ISHKUTEU  
TSHE ITAPEKAMUTAKANIT

ASSI NETU-TSHISSENITAKANIT  
TAN TSHE AITUTAKANIT

Takuapetinakanu tshetshi  
minu-nishtutakuak



Nalcor Energy tutamupan umenu e takuapekashteshinit mashinaikannu kie e minu-nishtutakuannit, miam ka itashtenit nete takuaikan-mashinaikanit ne assi e natu-tshissenitakanit tshe aitutakanit. Nenu uet tutak, tshetshi patshitinakanit e takuapetinakanit ne tshipa ishinakuan atusseun kie tshe ishi-takaikanit assi neme mishituepanitakaniti nanimissiu-ishkuteu. Ute ka takuapekashit mashinaikanit uauitakannu iapit tan ua itatusset ne Nalcor tapuetakuti Akami-assiss-tshishe-utshimaua kie Labrador mak nenua Utaua-tshishe-utshimaua tshetshi tutak nenu atusseunnu mishituepanitakaniti nanimissiu-ishkuteu. Takuan ne ka takuapekashit mashinaikan e akaneshaushtet, e mishtikushiushtet, e innushtet, e naskapiushtet kie e aissimeshtet.

Ui apashtaiekui etatu aimun anu menu-aimuatakanit kie e takuapekashit mashinaikan ne ka aitutakanit ka natu-tshissenitakanit assi, neme tshipa tshi natshi-tshitapatenau mashinaikan anite menu-uauitakanit ne ka natu-tshissenitakanit assi.



# EISHINIKATET TSHEKUAN

**Tshe ishi-takuaitsheenanu ka apashtakanit ne shash ka nishtuapatakanit** – tshishkutamashuatshenanu ne shash ka nishtuapatakanit kie minutakanu tshekuan e atshunakanit kie ueuetinakanit ne tshe aishpanit.

**Tshe ishi-pimipanit ishkuteu eka nanitam peikuait ka ishpanit** – ne eshinakuak nanimissiu-ishkuteu kie ma uashtenimakan nakana ka apashtakanit. Ne nanimissiu-ishkuteu mitshuapit tekuak, auenitshenat ipashtaht.

**Eshinakuak assi** – assi an eshinakuak, eshi-nitautshik anite tshekuan assit neme mate tshekuan uet tshi nenenanu, ne e nenetutakanit, eshi-minuashit, aueshishat kie nameshat mak kutak tshekuan natautshik assit.

**Anite tshe mishkutinakanit nanimissiu-ishkuteu** – ne iapashtakanit tshekuan tshetshi mishkutinakanit ne nanimissiu-ishkuteu eshi-pimipanit, ne ishkuteu eka nanitam peikuait ka ishpanit tshetshi mishkutshipan miam ishkuteu nanitam peikuait ishi-pimipanit (kie ma namaitau, ne peikuait ka ishpanit ne ishkuteu tshetshi mishkutshipan miam ishkuteu eka peikuait ka ishpanit). Anite tshe mishkutinakanit nanimissiu-ishkuteu eshi-pimipanit, nete tapititina ka ashupanitakanit nanimissiu-ishkuteu meshta-shutshishimakak mak eka nita netshipanit peikuait ka ishpanit.

**Ishkuteu nanitam peikuait ka pimipanit** – ne ishkuteu peikuait ka pimipanit, tshipa tshi itapashtakanu tshetshi itutakanit nanimissiu-ishkuteu nete mitshuapit kie atusseutshuapit. Ne eshinakuak nanimissiu-ishkuteu, takuan pitama tshetshi mishkutinakanit eshku eka apashtakanit nete mitshuapit miam ne ishkuteu eka nanitam peikuait ka ishpanit.

**Électrode ka ishinikatanit eukuani iapashtakanit tshetshi mauatshitakanit nanimissiu-ishkuteu** – mishta-shutshishimakan ne iapashtakanit tshetshi anite assit ishpanit ne nanimissiu-ishkuteu meshta-shutshishimakaki anite uashtenimakan-apishit, ne peikuait ka ishpanit nanimissiu-ishkuteu, etap pimipanu pakupaniti ne ka pimipanitat ishkutenu. Mishta-apatana tshetshi takuak anite pemipanit ishkuteu tshetshi eka kushtikuak kie tshetshi minushtet anite pemipanitakanit nanimissiu-ishkuteu.

**Natu-tshissenitakanu assi tan e aitutakanit** – miam ka ishi-natuenitakanit mashinaikan tutakanu tshetshi natu-tshissenitakanit assi tan e aitutakanit. Uauitakanu ne atusseun ua tutakanit mak tan tshe tutakanit anite assi kie auenitshenat tshe tutakuht. Uauitakanu ashit tshekuan tshe tutakanit tshetshi eka shuk<sup>u</sup> mishta-matshi-tutatshemakak ne atusseun kie anu tshetshi minupanit ui tutakanu. Ne netu-tshissenitakanit assi, tshika tshitapatamuat auenitshenat kie tshishe-utshimauat, mak tshika itapashtakanu tshetshi utinakanit aimun tshetshi ma tutakanit atusseun kie tan tshipa ishinakanu tutakanit.

**Tashkamutenanu nipi** – tashkamutenanu anite eka meshta-timit. Tshika ui tapuetam<sup>u</sup> tshetshi itatussenanunit ne tshishe-utshimau ka nakatuapatak e kussenanut kie shipekunu.

**Ishkuteu meshta-shutshishimakak mak eka nita netshipanit peikuait ka ishpanit** – ne ishkuteu eshpish shutshishimakak tshetshi katak<sup>u</sup> ishpanit. Ne eshinakuak ishkuteu apashtakanu mani tshetshi mishat kie katak<sup>u</sup> itutakanit ishkuteu mak ashit tshetshi atamipekut pimapekamutakaniti uashtenimakan-apisha.

**Anite tshe takushpanit assit** – Neme tshe pimapekamuti uashtenimakan-apisha tshe itapekamutakaniti atamipekut nipit.

Eshinakushit aueshishat meshinatauakaniht – anitshenat aueshishat ka minu-kanuenimakanieht (mak ashit anite etaht) nenua tshishe-utshimaua ka natuenitaminiti tshetshi eka meshti-nipaiakaniht. Nenu eshi-mashinatauakaniht aueshishat, tshipa tshi ishi-uinakanuat anite eshinakuannit tshetshi anakaniht : anitshenat shash kueshtikuannit tshetshi eka taht, ka kushtakanieht tshetshi meshti-nipaiakaniht kie ma shash tshe ui akua tutakaniht.

**Assinu anite niakatuenimakanieht aueshishat** – assit anite tshe nakatuapamakaniht etashiht aueshishat kie nameshat (mate: utshashumekuak, mushat kie atikuat) kie ka utinakanieht miam ka ishi-natuenitahk tshishe-utshimauat, Utauat mak Akami-assiss.

**Anite tshe mishituepanitakanit nanimissiu-ishkuteu** – nete tshe tutakanit ne atusseun, ua mishituepanitakanit nanimissiu-ishkuteu. Anite tshe pimapekamutakaniti uashtenimakan-apisha, tshika ishkuau peik<sup>u</sup> tipashkunikan min nish<sup>u</sup> mak anite anu peikutshishemitashumitannueshit ashu peikushteu-tatunnu ashu kutuasht min nishuash tshika ishpish anakashkau anite tshe atussenanut, anite tshe pimapekamuti apisha atamipekut shipekut, anite tshe aitutakanit ishkuteu tshishutipek, anite tshe mishkutinakanit ishkuteu, anite ashinia tshe takuaki, meshkanaua tshetshi natakaniti neni aitapashtauna, mak kutaka.

**Meshkanau** – assi an anite tekuak pessish tshemashuht uashtenimakan-mishtikuak mak anite tshe pimapekamutakanit nanimissiu-ishkuteu, meshkanau an, mushuau kie apu tshimashuht anite mishtikuak kie apu nitautshik tshekuan. Tshipa ui uanasse anite itutenanu anite tekuaki uashtenimakan-apisha kie aitapashtauna. Eukuan an ne eshinikatet anite tshe itamutakanit nanimissiu-ishkuteu.

**Nanimissiu-ishkuteu-apisha ka pimipaniti atamipekut** – apisha neni, nanimissiu-ishkuteu tekuak muk<sup>u</sup> ka minu-uishkueietinakaniti tshetshi eka katshitaikanit ne assi, tshetshi eka matshi-tutatsheti mak tshipa tshi anauakaikanua kie ma nipit pakashtueikanua.

**Nipisha, mashkushua** – mishtikuak, shikaua anite ka tshimateti anite uashtenimakan-mishtikua tshe tshematakaniti anite nanimissiu-ishkuteu tshe aitutakanit, tshipa tshi kushtikuana neni tekuaki nipisha, mashkushua anite etaht kupanieshat ka atusseshtahk uashtenimakan-apisha. Tshimishakanua kie ma mannakanua tshetshi eka kushtikuaki anite tekuaki.

## E TAKUASHITI AIMUNA MESHINATAIKANITI

E takuashiti aimuna	Tshekuan essishuemakaki
ACEE	Atussetshuap anite ka natu-tshissenitakanit assi e aitutakanit
C.A.	Ne ishkuteu eka nanitam peikwait ka ishpanit
C.C.	Ne ishkuteu nanitam peikwait ishi-pimipanit
CEM	Eshi-matenitakuak ne nanimissiu-ishkuteu tekuak uiesh (ishinikateu Champ électromagnétique)
DBI	Détroit de Belle Isle eshinikatet
EIE	Tutakanu mashinaikan tshe uaitakanit ne ka natu-tshissenitakanit assi tan e aitutakanit
FDH	E pakuneitshenanut anite atamit assit kie kuishk <sup>u</sup> tshe ishi-pakuneitshenanut
HTCA	Ishkuteu meshta-shutshishimakak mak eka nanitam peikwait ka ishpanit
HTCC	Ishkuteu meshta-shutshishimakak mak nanitam peikwait ka ishi-pimipanit
km	Eshi-tipaikanit ne eshpishinakuak (ishinikateu Kilomètre)
kV	Eshi-tipaikanit nanimissiu-ishkuteu (eshinikatet Kilovolts)
l'île	Mishta-minishtik <sup>u</sup> Akami-assiss
le Projet de transmission	Ua mishituepanitakanit nanimissiu-ishkuteu
m	Eshi-tipaikan ne eshipishat tshekuan( ka ishinikatet Mètre)
Nalcor	Nalcor Energy
PPE	mashinaikana tshe nashatakaniti tshetshi nakatuapatakanit assi
RTC	Mishta-meshkanau
RTL3	Mishta-meskanau tshe itamut nete Labrador, nisht <sup>u</sup> etananut
VTT	Ka nishtukateti utapana

# ESHI-TAKUAK UTE MASHINAIKANIT

<b>USHKAT E TSHITSHIPANIT .....</b>	<b>1</b>
<b>ESHI-NUTEPANIT NANIMISSIU-ISHKUTEU KIE TSHEKUAN MA UET UI MISHITUEPANITAKANIT NANIMISSIU-ISHKUTEU .....</b>	<b>3</b>
<b>NE UA TUTAKANIT ATUSSEUN UA MISHITUEPANITAKANIT NANIMISSIU-ISHKUTEU .....</b>	<b>5</b>
Anite tshe mishkutinakanit eshinakuak nanimissiu-ishkuteu .....	6
Uashtenimakan-apisha .....	6
Tshe tashkamipaniti ka mishapekaki apisha atamipekut .....	8
Ishinikatakanua Électrodes, apashtakanua anite nanimissiu-ishkutet tshetshi pimipaniti ishkuteu .....	9
<b>TSHE TSHIMATAKANIT NE ATUSSEUN .....</b>	<b>11</b>
Anite tshe mishkutinakanit nanimissiu-ishkuteu.....	11
Anite tshe pimapekamuti uashtenimakan-apisha.....	11
Tshe tashkamipaniti ka mishapekaki apisha atamipekut .....	12
Ishinikatakanua Électrodes, apashtakanua anite nanimissiu-ishkutet tshetshi pimipaniti ishkuteu .....	13
Kau tshe minushtakanit ka ishinakuak assi .....	13
Tshekuan tshe tshimatakanit.....	13
Tatupipuna tshe tananut atussenanuti .....	14
<b>TSHE ITAPASHTAKANIT KIE TSHE ISHI-NAKATUENITAKANIT NE ATUSSEUN TSHE MISHITUEPANITAKANIT NANIMISSIU-ISHKUTEU .....</b>	<b>15</b>
Shash pimipaniti nanimissiu-ishkuteu.....	15
Tshe nakatuenitakanit kie tshe ueueshtakanit eka minupaniti.....	16
Tshe pimipaniti ishkuteu .....	17
<b>E NATU-TSHISSENITAKANIT ASSI E AITUTAKANIT .....</b>	<b>18</b>
<b>TSHE NATAKANIHT AUENITSHENAT.....</b>	<b>20</b>
<b>ESHINAKUAK ASSI ANUTSHISH.....</b>	<b>22</b>
Tshishik <sup>u</sup> e nenetutakanit.....	22
Assi .....	23
Shipua, shakaikana (nipia).....	25
Shipek <sup>u</sup> .....	27

<b>TAN ETASHINIHT ANITE AUENITSHENAT EPIHT ANUTSHISH .....</b>	<b>30</b>
Ka natuapatshitshenanut shashish ka aishpanit kie ka ishi-kanuenitashunanut.....	30
Utenassa anite epinanut .....	31
Eshi-mishituepanit atusseun kie e shuniatshenanut.....	32
Tan etapashtakanit assi kie ne eshi-takuak .....	32
Maniteuat e ashuapamakaniht.....	34
Tshe ishi-nukuak .....	35
Ka kussenanut shipekut .....	35
<b>MISHITUEPANITAKANITI NANIMISSIU-ISHKUTEU, TAN TSHE AITUTAKANIT NE ASSI....</b>	<b>37</b>
Tshishik <sup>u</sup> .....	38
Assi .....	38
Nipi tekuak, shipua kie shakaikana.....	41
Shipek <sup>u</sup> .....	42
<b>TAN TSHE AITUTAKUHT ATUSSENANUTI, MISHITUEPANITAKANNITI</b>	
<b>NANIMISSIU-ISHKUTENU ANITSHENAT NUTIM ESHINNIUHT AUENITSHENAT .....</b>	<b>44</b>
Ka natuapatitshenanut tshiashi-tipatshimun kie eshi-kanuenitashunanut.....	44
Anite tekuaki utenaua, utenassa, innu-assia .....	45
Tshe mishituepanitakanit atusseun kie tshe shuniatshenanut.....	46
Tshe itapashtakanit assi kie ne tshekuan natautshik kie tekuak anite assit.....	46
Maniteuat ka ashuapamakaniht .....	47
Ka minunakuak assi tshatapakaniti.....	48
Ka kussenanut shipekut .....	50
<b>TSHE NAKATUAPATAKANIT KIE TSHE NASHATAKANIT ATUSSEUN .....</b>	<b>51</b>
<b>E PUNANUT MASHTEN AIMUN .....</b>	<b>52</b>

# KA UI MISHITUEPANITAKANIT NANIMISSIU- ISHKUTEU TSHE ITAPEKAMUTAKANIT



UNIPEK<sup>U</sup>  
ATLANTIQUE  
ESHINIKATET

Shipek<sup>u</sup> ka ishinikatet  
Golfe du St-Laurent

■	Nishuait anite tshe tshimateti mitshuapa anite tshe mishkutinanakit nanimissiu-ishkuteu
—	Nete tshipa tshimateua uashtenimakan-mishtikua
—	Nete tshe itapekamutakanit ka mishapekaki uashtenimakan-apisha atamipekut ka pimipanitakaniti
—	Mishta-meshkanau Labrador ka pimanut
△	Electrode Site





## USHKAT E TSHITSHIPANIT

Nalcor Energy (Nalcor) atusseutshuap an, ne Akami-assiss mak Labrador nenu tipenitam<sup>u</sup>. Nalcor ui tutam<sup>u</sup> nenu atusseunnu eshinikatenit ua mishituepanitakanit nanimissiu-ishkuteu, nete tshe utshipanit ut Mishta-shipit nete taushkamit Labrador assit, nete ashit eshinikatet assi Soldiers Pond nete minishtikut Akami-assiss (minishtik<sup>u</sup>). Ne tshe mishituepanitakanit nanimissiu-ishkuteu, tshika minuau kie tshika uashkamau mak tshika manatshitakannu assinu tshe minakaniht anitshenat epiht Akami-assissit kie nete atusseutshuapa tekuaki. Tshika minakanuat ashit nenu nanimissiu-ishkutenu kutaka assia mak nete Nipashtuneu-assit.

Nalcor uitamupan tshe minuanit nanimissiu-ishkutenu tshe patshitinak kie eka tshe kushtikuannit tshetshi apashtaniti auennua ishkutenu kie tshe nakatuapatak assinu tshetshi eshk<sup>u</sup> apashtaniti auennua tshe taniti aianishkat. Nalcor ishpitepitam<sup>u</sup> assinu, apu ui uinakutat assinu, mishta-nakatuapatam<sup>u</sup> tshetshi eka mishta-uinakutat assinu kie kassinu takuaikana tekuanniti nashatam<sup>u</sup> tshetshi kuishk<sup>u</sup> tutakannit assinu.

Eshk<sup>u</sup> eka tshitshipannanuti ne atusseun ua mishituepanitakanit nanimissiu-ishkuteu, Nalcor tshika aieshkushtau mashinaikana tshe nashatakanniti tshetshi nakatuapatakanit assi nenu tshe ui nashatahk anitshenat kupanieshat tshe atusseht. Uitakanu anite mashinaikanit tshipa ui aitutakanu assi tshetshi tshishpeuatakanit assi.

Nalcor apu tshika ut tshi tshitshipanit e tshimatat nenu atusseunnu, nenu ua mishituepanitat nanimissiu-ishkutenu, eshk<sup>u</sup> eka tapuetakut nenua Utaua-tshishe-utshimaua kie nenua Akami-assiss-tshishe-utshimaua mak Labrador. Anitshenat tshishe-utshimauat natuenitamuepanat nenua Nalcor tshetshi natu-tshissenitaminiti

assinu nenu atusseunnu ua tutak mak uitamuepanat ashit Nalcor tshekuannu anite tshe ui natu-tshissenitaminiti.

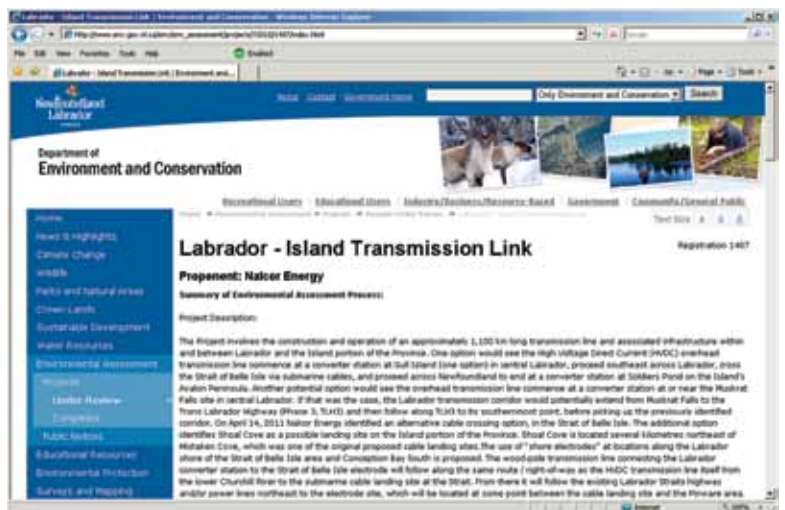
Nalcor aieshkushtapan mashinaikannu nenu netu-tshissenitak assinu tan e aitutakannit mak ashit tekuannit aimunnu ka natuenitamakut tshishe-utshimaua tshetshi utinaminiti aimunnu tshima tapuetaminiti nenu atusseunnu ua tutak, ua mishituepanitat nanimissiu-ishkutenu. Nenu umashinaikannu ka tutak netu-tshissenitak assinu, tshika tshitapataminua Utaua-tshishe-utshimaua mak Akami-assiss-tshishe-utshimau mak Labrador, innua kie mitshet auennua mak atusseutshuapa.

Ne ka natu-tshissenitakanit assi, mishta-apatan an ne atusseun, nenu tshe ui aieshkushtat ne Nalcor tanite uitshiku tshetshi minu-uauitak atusseunnu ua tutak, ua mishituepanitat nanimissiu-ishkutenu mak kanapua ashit ekue atshupannit nenu tshipa eka minuanu eshi-katshitaikannit assinu.

Neme mashinaikan ka natu-tshissenitakanit assi mak neni kutaka mashinaikana ka tutak Nalcor patshitinakanipani nete tshishe-utshimat, mishta-mitshetuekana mashinaikanuiana. Nemenu utatusseu-katshitapatakanim Akami-assiss-tshishe-utshimau mak Labrador, ne ashit tshishe-utshimau ka nakatuapatak assinu kie tshishpeuatak, [www.env.gov.nl.ca/env/](http://www.env.gov.nl.ca/env/), takuana neni mashinaikana.

Tshipa tshi etatu katshitinenau aimun, ne atusseun ua tutakanit, nanimissiu-ishkuteu ua mishituepanitakanit, nete atusseu-katshitapatakanit: [nalcorenergy.com/lowerchurchillproject.com](http://nalcorenergy.com/lowerchurchillproject.com).

Ne mashinaikan ka natu-tshissenitakanit assi mak neni kutaka mashinaikana eshinakuaki tshipa tshi tshitapatakanua nete etashtet atusseu-katshitapatakanit: [www.env.gov.nl.ca/env/](http://www.env.gov.nl.ca/env/).





## ESHI-NUTEPANIT NANIMISSIU-ISHKUTEU KIE TSHEKUAN MA UET UI MISHITUEPANITAKANIT NANIMISSIU-ISHKUTEU

Etatu ui apashtakanu nanimissiu-ishkuteu nete Akami-assissit. Ne ua mishituepanitakanit nanimissiu-ishkuteu, tshika uitshiueu ne eshi-nutepanit ishuteu, tshika itutakannu anite etaht auenitshenat kie anite atusseutshuapa tekuaki nete minishtikut, anite ut taushkamit Labrador tshe utshipanit. Tshika uashkamau ne nanimissiu-ishkuteu tshe takuak kie nanitam tshika pimipanu. Itutakaniti ishuteu nete minishtikut, anu tshika ishpananu kie tshika atshupanu neni kutaka iapashtakaniti eka menuat uetshipanit ne nanimissiu-ishkuteu, eka kau tshe apashtakanit.

Ne e mishkutshipanit eshinakuak tshishik<sup>u</sup> utshipanu nete uet unuipanit eka menuat tshekuan e piputepanit anite ut utapanit, ukutashkut kie ait. Mishta-mamitunenitamieue meshta-amatshuepanit shassikut kie mishta-uipat ne eshpish tshishitet assi kie anitshenat tshishe-utshimauat, Utauat mak Akami-assiss ui atshunamuat nenu e piputepannit tshekuannu eka menuanit. Tshi tutakanit ne atusseun ua mishituepanitakanit nanimissiu-ishkuteu mak ne tshi minushteti eshpish apashtakanit ishuteu uetshipanit nete etutakanit ne ishuteu ashit ne uenuipanitakanit eka ka minuat, apu tshika ut shuk<sup>u</sup> mishta-mishat ne eka ka minuat uetshipanit nete minishtikut, ne uet tutakanit nanimissiu-ishkuteu.

Apu tshika ut mishta-shuniaut ne nanimissiu-ishkuteu takuaki nete aishkat mak at neme anutshish eshinakuak anite uetshipanit ne nanimissiu-ishkuteu nete tekuak minishtikut. Ne tshe itatshitakanit nanimissiu-ishkuteu apu anu tshika mishkutshipanit. Anu tshika minuatamuat anitshenat epiht kie etusseht anite Akami-

## ESHI-NUTEPANIT NANIMISSIU-ISHKUTEU KIE TSHEKUAN MA UET UI MISHITUEPANITAKANIT NANIMISSIU-ISHKUTEU

---

assiss mak Labrador. Tshipa put tshi ashit takuana ussi-atusseutshuapa tshematakaniti kie tshipa tshi tutakanu atushman nete Akami-assissit.

Ne atusseun tutakaniti, anu tshika minupanu tshetshi shuniatshenanut neme tshe ishpish pitutepanit nanimissiu-ishkuteu, miam atusseshtakaniti, tutakaniti, kie mitshet auenitshenat tshika tshi atusseuat. Tshika tshi takuana atusseutshuapa anite tshe utinakanit tshekuan kie anite tshe atusseshtuakanit auen.

Nalcor mamitunenitamupan tshetshi kutakanu tshekuannu tutak eka takuanniti nenu atusseunnu, nenu ua mishituepanitakannit nanimissiu-ishkutenu, miam nenu e nutinit apuiat ka tshinikuanipaniht ka mamushatshinahk nanimissiu-ishkutenu kie ma neni mitshuapa anite etutakanit nanimissiu-ishkuteu nete minishtikut. Nenu eka tshe mishta-tshishikashunanunit mak tshe ishpanannit nete minishtikut, nenu ashit atusseunnu ua tutakannit, ua mishituepanitakannit nanimissiu-ishkutenu.

Kutak ashit tshekuan mamitunenitakanipan tshetshi tutakanit ne ua mishituepanitakanit. Neni tshekuana mate:

- Tan tshipa tshi tashkamaikanu ne shipek<sup>u</sup> – tutakanit anite tshe tashkamipatananut kie ma tshetshi apashtakaniti ka mishapekaki apisha nete shipekut.
- Meshkanaua kie ma anite tshe pimapekamutakaniti uashtenimakan-apisha tshetshi itutakanit nanimissiu-ishkuteu.





## NE UA TUTAKANIT ATUSSEUN UA MISHITUEPANITAKANIT NANIMISSIU-ISHKUTEU

Ne ua mishituepanitakanit nanimissiu-ishkuteu nete tshika tutakanu Akami-assiss mak Labrador assit. Eukuan ume tshe tshimatakanit kie tshe pimipanitakanit tshetshi takuak atusseun:

- anite tshe mishkutinakanit ne ishikuteu eshinakuak nete Muskrat Falls (Labrador) tshe tshimatet, tshika mishkutinakanu ne ishikuteu eka nanitam peikuaik ka ishpanit ishinakuan ishikuteu tshetshi nanitam peikuaik ishi-pimipanit.
- Uashtenimakan-apisha anite tshe pimipanitakanit ishikuteu meshta-shutshishimakak mak tshetshi nanitam peikuaik ishi-pimipanit, tshe itamuti nuash nete Muskrat Falls anite tshe mishkutinakanit nanimissiu-ishkuteu eshinakuak nete shipekut nuash nete tshe itapakamuti Forteau Point.
- tshika itapekamutakanua atamipekut uashtenimakan-apisha tshe itapekamuti nete ut Forteau Point, Labrador nuash nete Shoal Cove, Akami-assiss e tashkamipaniti atamipekut nete eshinkatet détroit de Belle Isle.
- uashtenimakan-apisha meshta-shutshishimakaki mak eka nita netshipanit ishikuteu peikuaik ka ishpanit, tshe itamuti nete Shoal Cove nuash Soldiers Pond, Akami-assissit.
- Tshika tshimatakanu mitshuap anite tshe mishkutinakanit ishikuteu nete Soldiers Pond, tshe mishkutinakanit ishikuteu peikuaik ka pimipanit tshetshi ne ishikuteu eka nanitam peikuaik ka ishpanit ishinakutakanit mak shash tshetshi apashtakanit nete minishtikut.
- tshika tutakanu tshekuan anite tshe pimipanit ne ishikuteu tshetshi kau tshiepanit nete assit, tshetshi eka mishta-shutshishimakak ne nanimissiu-ishkuteu tshe pitutepanit nete mitshuapit. Nete tshika takuan shipekut eshinkatet Anse au Diable mak Dowden's Point nete Akami-assissit.

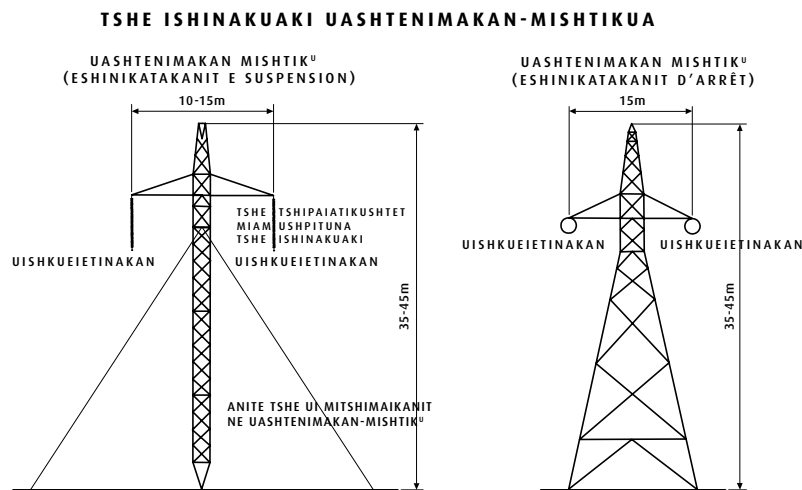
### Anite tshe mishkutinakanit eshinakuak nanimissiu-ishkuteu

Anite tshe mishkutinakanit nanimissiu-ishkuteu neme mishituepanitakaniti nanimissiu-ishkuteu nete mitshuapa, aitu tshika tshimatakanua tshe utshipanit kie nete tshe ishpanit. Tshika tshimatakanua anite ashinissa tekuaki kie anite tshe paunakanit nashima. Tshika assikumanikateua anite tshe itapekamuti uashtenimakan-apisha. Tshika tshipashkuaikanu anite tshetshi eka auen itutet anite tekuannit ishkutenu.

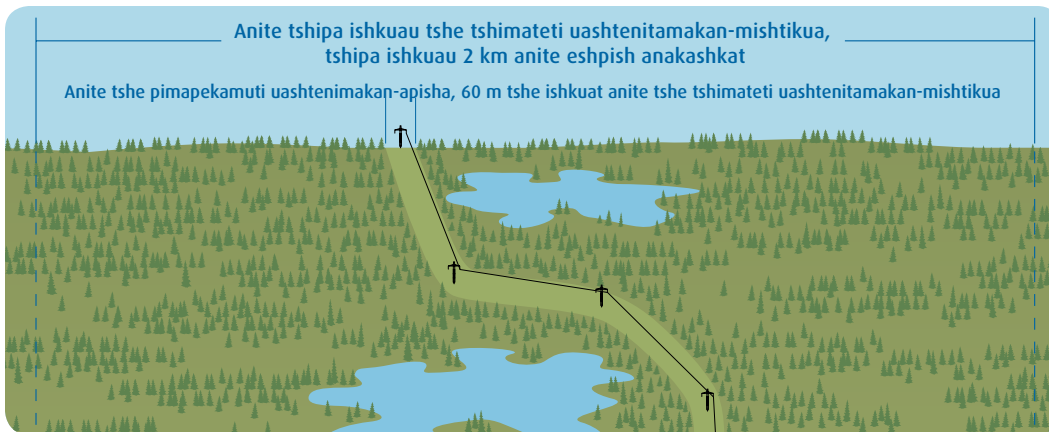
Neme mitshuap tshe takuak anite tshe mishkutinakanit nanimissiu-ishkuteu eshinakuak nete Muskrat Falls tshika tshimateu. Tshika mishkutinakanu ne ishkuteu eka nanitam peikuaith ishpanit tshetshi peikuaith muk<sup>u</sup> tshe ishpanit. Neme kutak mitshuap tshe takuak nete Soldiers Pond tshika mishkutinam<sup>u</sup> ishkutenu peikuaith ka ishpanit ishkuteu tshetshi nanitam peikuaith ishi-pimipanit kau nete uashtenitaman-apishit. Ne nanimissiu-ishkuteu eka peikuaith tshe ishi-pimipanit tshika itapekamutakanu nete itetshe minishtikut tshe apashtakanit mitshuapit kie atusseutshuapit. Neme mitshuap anite tshe mishkutinakanit ishkuteu tekuak anite Soldiers Pond, tshika itapekamua anite apisha shash ka takuaki. Meshkanau tshika tutakanu pushk<sup>u</sup> tipashkunikan tshe ishkuamut, tshika itamutakanu Soldiers Pond nuash mishta-meshkanat.

### Uashtenimakan-apisha

Nemeni uashtenimakan-apisha tshe apashtakaniti anite tshe pimipanitakanit ishkuteu, mishta-shutshishimakana mak apu nita natshipanit ishkuteu peikuaith ishpanu. Apu tshika



ut apashtakaniti uashtenimakan-apisha anite pemipanitakanit ka mishta-shutshishimakak mak ka katshiutshiuapanit ishkuteu nete ka takuanueni Akami-assissit mak Labrador. Mishta-shutshishimakana neni uashtenimakan-apisha ua apashtakaniti, anu minuaua tshetshi anema ishkuteu pimipanit kie katak<sup>u</sup> ishpanit mak ashit nete atamipekut pimapekamutakanitau. Mamu ishkuaua nishutshishemitashumitannu ashu patetat-tatunnu tipashkunikan neni uashtenimakan-apisha kie mishtikua tshe itapekamuti nete ut Muskrat Falls mak Forteau Point mak anu neutshishemitashumitannu ashu nishtunnu ashu patetat tipashkunikan tshipa ishkuaua, uashtenimakan-apisha tshe ut tshitshipaniti Shoal Cove nuash Soldiers Pond. Nemeni uashtenimakan-apisha tshe utshipaniti assit, tshika nishina e mishapekaki apisha kie tshika tshikamua nete uashtenimakan-mishtikut ka assikumanuti kie ka ishpanati peikutshishemitashumitannueshit ashu peikunnu ashu patetat kie ma peikutshishemitashumitannueshit ashu neunnu ashu nishuasht. Anite ka mishapekaki apisha, tshika pimipanu nanimissiu-ishkuteu tshe utshipanit nete ut mitshuap ka tutakanit ne nanimissiu-ishkuteu ka takuak nete Muskrat Falls kie tshe itutakanit nete minishtikut Akami-assissit. Tshika takuan anite apish etatu epishapekashit, tshika nakatuapatam<sup>u</sup> an tshetshi eka nanimissua katshitaiminiti apisha.



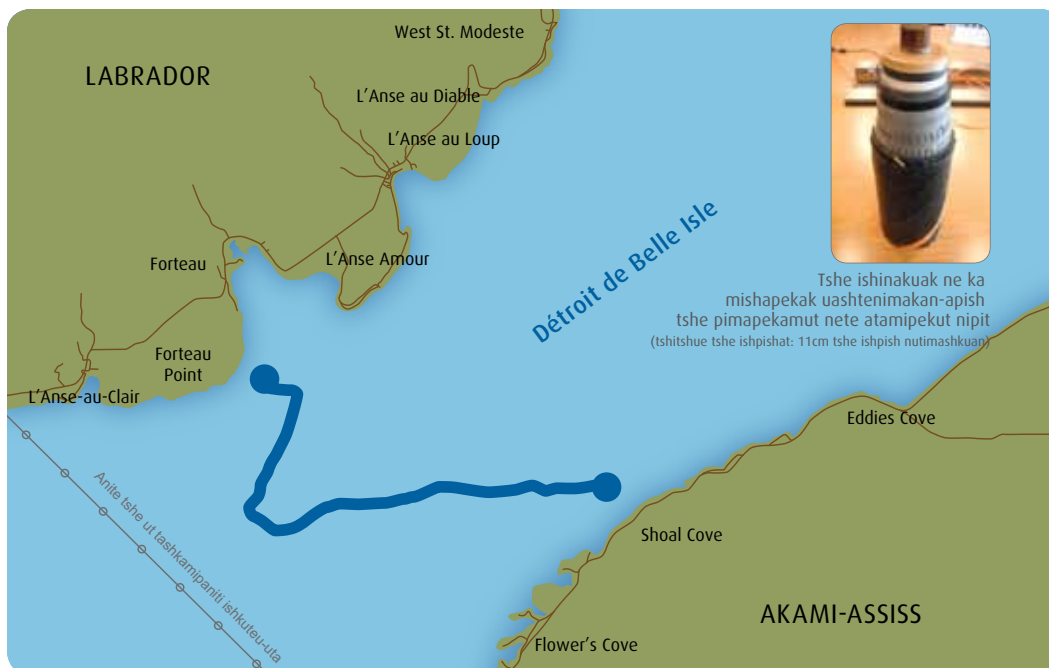
Nalcor utinamupan assinu tshe ishkuanit peik<sup>u</sup> min nish<sup>u</sup> tipashkunikan kie tshe ishpish anakashkanit anite tshipa tshimatakanua uashtenimakan-mishtikua kie uashtenimakan-apisha tshetshi pimipanit anite nanimissiu-ishkuteu. Tshika utinakanu ne tshe itapashtakanit tshetshi pimipanitakanit ishkuteu miam tshekat tshishtapanitakaniti ne atusseun ua tutakanit. Anite kassinu tshe takuaki neni uashtenimakan-apisha kie uashtenimakan-mishtikua, miam meshkanau tshipa itenitakuan kie tshipa ishkuau peikutshishemitashumitannueshit ashu peikushteu-tatunnu ashu kutuasht. Eshk<sup>u</sup>

eka tutakanit anite uiesh tshe tshimatakaniti neni nutim aitapashtauna tshetshi pimapekamutakaniti uashtenimakan-apisha, pitama tshika nakatuenitakanu neme tshe ishi-unuipanit aimun assi ka natu-tshissenitakanit, miam neme tshe ishi-kukuetshimunanut nete natakanitau auenitshenat.

Nete Forteau Point mak Shoal Cove nemeni uashtenimakan-apisha tshika itapekamua nete tshekat nashipetimit, tshika tshimatakanu anite mitshuap, tshika nashimashikateu, tetaut pushku tipashkunikan nete ishkuatipet tshika tshimateu. Ekute tshe ut anauakaikaniti ka mishapekaki apisha ka pimamutakaniti atamipekut nete tshe tashkamipaniti atamipekut nuash nete minishtikut, Akami-assissit.

### Tshe tashkamipaniti ka mishapekaki apisha atamipekut

Tshika nishtina ka mishapekaki apisha anite tshe pakashtueikaniti nipit tshetshi tashkamipaniti nete shipekut anite ut Forteau Point nuash Shoal Cove. Tshika pitutepanitakanua neni apisha anite tshe pakuneikanit atamit assit nuash pushku tipashkunikan anite uinuat kataku anite nashipetimit. Neni apisha, tshika ashtakanua anite mushe shipekut, naneumitashumitannueshit ashu peikushteu-tatunnu ashu nishu min





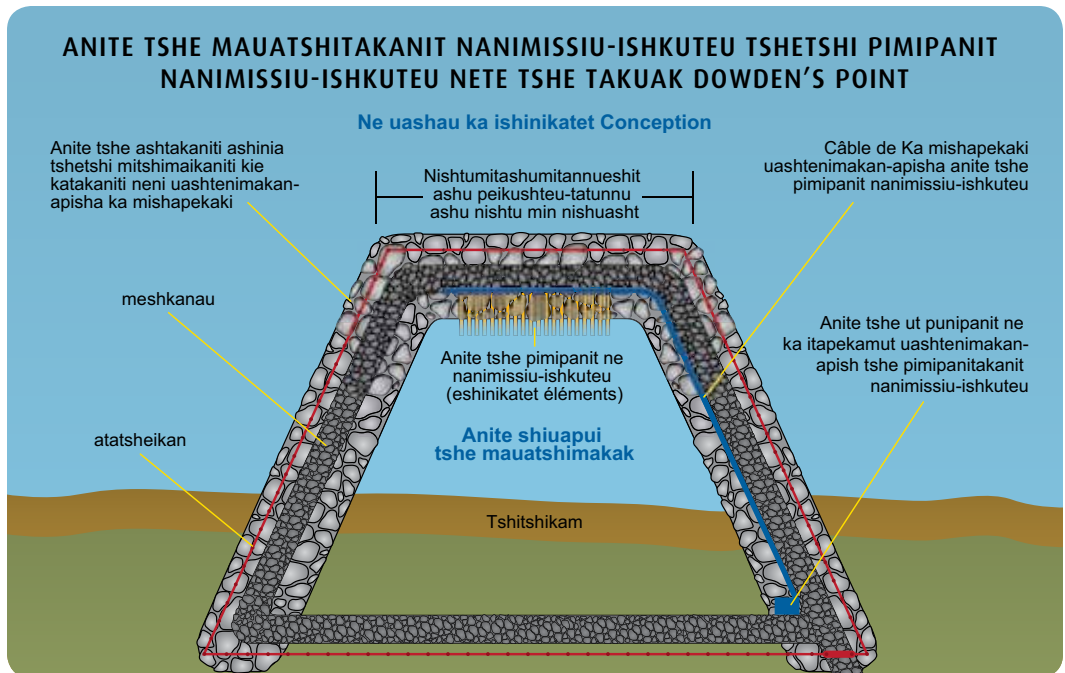
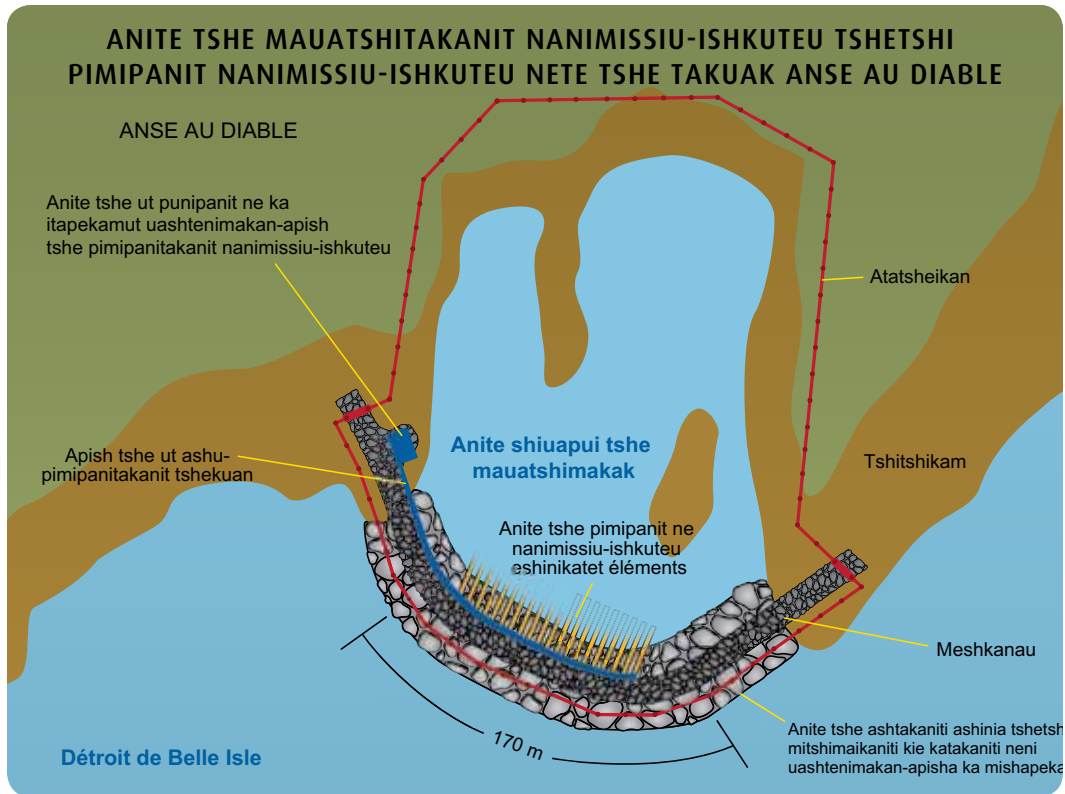


peikunnu ashu patetat anite katak<sup>u</sup> tshe ishpish ashteti. Tshika ashtakanua ashinia anite papeik<sup>u</sup> neni apisha etatiki, nishtunnueshit ashu nish<sup>u</sup> min nishuaush-tatunnu ashu peik<sup>u</sup> eshpish anakashkat mak nishtueshit min nishumitashumitannu ashu nishuaush-tatunnu ashu peik<sup>u</sup> eshipish ishpanat. Nish<sup>u</sup> ka mishapekaki apisha tshika apashtakanua tshetshi pimipanitakanit nanimissiu-ishkuteu. Neme mashten tshe takuak, tshika apashtakanu patush pikupanikau neni kutaka apisha.

### Ishinikatakanua Électrodes, apashtakanua anite nanimissiu-ishkutet tshetshi pimipanit ishuteu

Ne eshinikateti électrodes, apashtakanua tshetshi pimipanit ne nanimissiu-ishkuteu kie ma anite tshe tutakanit tshetshi atamit assit ishpanit ne ishuteu. Tshika tshimatakanua nete nishuait : nete itetshe eshinikatet détroit de Belle Isle, Anse au Diable (Labrador) mak nete kutak itetshe Baie de la Conception, nete Dowden's Point (Akami-assissit).

Neni eshinikateti électrodes, mitshetamua neni assikumaniapia tshe ashtakaniti nete shipekut, apatana tshetshi minushtet ne nanimissiu-ishkuteu ka mishta-shutshishimakak mak eka nita netshipanit, peikuaik ta ishpanitakanit. Katipanashteua nete atamit shipekut, ashinia anite neunnueshit ashu peikushteu min nishumitashumitannu ashu kutunnu ashu patetat tshipa ishpish ishpanashteua. Neme peik<sup>u</sup> tshe takuak nete Anse au Diable eshinikatet, tshika tapitin nete mitshuapit tshe mishkutshipitak nanimissiu-ishkutenu ka tshimatet nete Muskrat Falls mak neme kutak tshematet nete Dowden's Point, tshika tapititakanu nete mitshuapit tshe mishkutshipitak nanimissiu-ishkutenu ka tshimatet nete Soldiers Pond. Uashtenimakaniapia uet tshi tapitiki, anite uashtenimakan-mishtikut tshika akuteua neni apisha.





## TSHE TSHIMATAKANIT NE ATUSSEUN

Ne tshe tutakanit atusseun, ua mishituepanitakanit nanimissiu-ishkuteu, neupipuna tshipa ishpish atussenanu. Nalcor tshika utineu tshetshi atusseniti nenua ka kanuenitaminiti atusseutshuapa kie kupaniesha ka nishtuapataminiti atusseunnu. Minupaniti, tshika utinakanuat auenitshenat uetshipaniht nete Akami-assissit kie Labrador. Nalcor mushtuenitam<sup>u</sup> ashit tshetshi atusseuiat anite tutakaniti ne atusseun innua, ishkueua, ait-assit innua ka utshipaniti mak ka massishiniti.



### **Anite tshe mishkutinakanit nanimissiu-ishkuteu**

Nemeni mitshuapa tshe tshimatakaniti anite tshe mishkutinakanit ne eshipish shutshishimakak nanimissiu-ishkuteu nete itetshe Muskrat Falls mak Soldiers Pond, nishupipuna tshika tananu. Tshika mushuashkuaitshenanu pitama anite tshe tshimatakaniti neni mitshuapa mak tshika tutakanua meshkanaua. Neni mitshuapa tshika tshimatakanua kie tshika takuana atusseuakana. Tshika kutshipanitakanua pitama neni atusseuakana eshk<sup>u</sup> eka apashtakaniti.

### **Anite tshe pimapekamuti uashtenimakan-apisha**

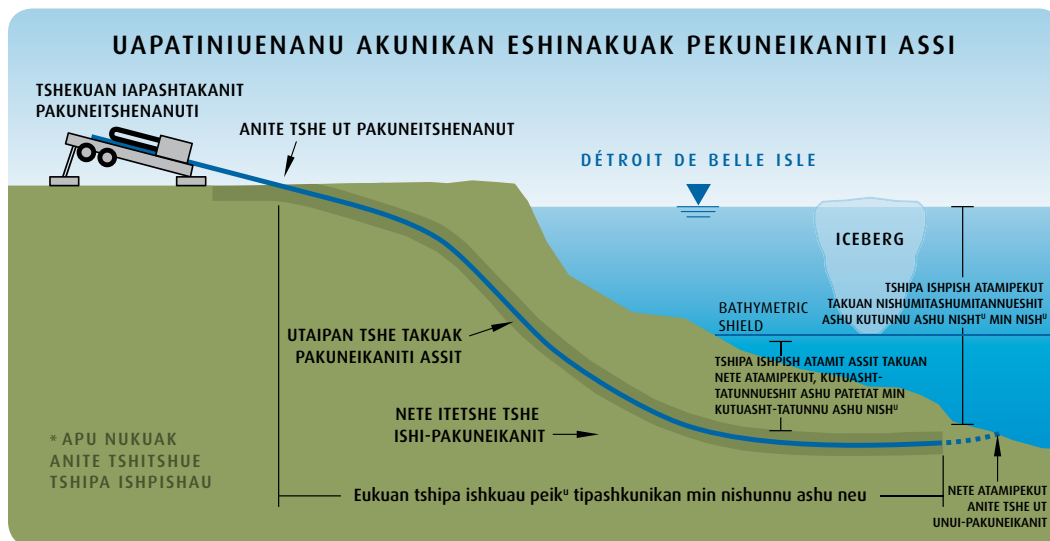
Neupipuna tshika tananu tshetshi tshimatakaniti nemeni uashtenimakan-apisha anite tshe pimipanitakanit nanimissiu-ishkuteu. Tshika tutakanua pitama meshkanaua kie ashukana



tshetshi pimipatananut tshetshi natakaniti neni uashtenimakan-apisha. Tshika tutakanua mitshuapa anite tshe ashtuashunanut uenapissish mak anite tshe apinanut. Nete tshe tshimateti neni uashtenimakan-mishtikua, tshika mushuashkuaitshenanu mak tshika tshissinuatshitakannu anite tshe tshimatakaniti neni uashtenimakan-mishtikua. Neni uashtenimakan-mishtikua tshika tutakanua, tshika tshimatakanua tshe apishikatakaniti, uashtenimakan-apisha tshika akutakanua anite. Neme tshe pimipanit nanimissiu-ishkuteu, tshika kutshipanitakanu eshk<sup>u</sup> eka tshitshue apashtakanit.

### TSHE TASHKAMPANITI KA MISHAPEKAKI APISHA ATAMIPEKUT

Nishtupipuna tshika tananu tshetshi tashkam-akutitakaniti ka mishapekaki apisha nete ut atamipekut. Tshika tshimatakanu nete pessish nipit tshekuan tshetshi pakuneitshenanut, tshetshi pakuneikanit assit, tshetshi papeik<sup>u</sup> apisha pitutepaniti nete itetshe nipit tshe akutiki. Nishuait anite tshika aitatussenanu neme shipek<sup>u</sup> tekuak mak ne ministik<sup>u</sup>. Ishkuteu-ush tshika tau tshetshi itapekamutat ka mishapekaniti apisha. Tshika mishta-mishau anite apish tshe itapekamutakanit tshetshi anite aitu itapekamuti neme shipek<sup>u</sup> tekuak, nete assit nuash nete akamit minishtikut.



Tshika takutashtakanua ashinia takut anite apisha tshe takuaki, ishkuteu-ush tshika minushtau ashinia. Tshika ui utitinam<sup>u</sup> nete atamit assit anite nipinu ussit tekuannit. Ne ishkuteu-ush, tshika apashtau ka pakunetakaik tshetshi ashtat anite ashinia meshekut anite ussit apisha tekuanniti.

### **Ishinikatakanua Électrodes, apashtakanua anite nanimissiu-ishkutet tshetshi pimipanit ishkodeu**

Peikupipuna tshika tananu tshetshi aieshkushtakanit anite tshe pimipanit ne nanimissiu-ishkodeu, électrode ka ishinitatet ne tshekuan. Ka mishapishkati ashinia tshika ashtakanua pessish shipekut tshe mauatshimakak anite shiuapui. Tshika tapititakanu anite tekuak ne mitshuap tshe mishkutinak nanimissiu-ishkutenu, tshika apashtakanua uashtenimakan-apisha ka akuteti nete uashtenimakan-mishtikut, ka mishtikuti.



### **Kau tshe minushtakanit ka ishinakuak assi**

Tshi tshishtakaniti ne atusseun, tshe mishituepanitakanit nanimissiu-ishkodeu, nemeni tshe anupaniti atusseuakana tshika naikakanua mak ne assi tshika minunakutakanu miam ka ishinakuak eshk<sup>u</sup> eka tshitshipannanut e atussenanut, tshetshi kau nitautshik anite tshekuan.

### **Tshekuan tshe tshimatakanit**

- Meshkanaua mak anite tshe ut tshi itutenanut nete tshe atussenanut tshika tutakanua, tshetshi eka kushtikuannit anitshenat kupanieshat natshi-atussetau kie neni atusseuakana kie aitapashtauna tshe itutakaniti nete tshe atussenanut. Minupaniti, tshika apashtakanua neni shash tekuaki meshkanaua.
- Anitshenat kupanieshat tshe atusseht tshimatakaniti tshekuan, tshika tutakannua anite tshe uitshiht. Tshishtakaniti ne atusseun, tshika atutitakanua neni mitshuapa nete tshe tananut etussenanut. Itenitakanu tshi tshimatakaniti kaitshinanuti kutunnu ashu peik<sup>u</sup> neme atusseun tutakaniti.
- Tshika utinakanu assi tshe ashtuashunanut, patetat neni assia tshika apashtakanua tshetshi minushtakaniti kassinu ne aitapashtauna, atusseuakana neme atussenanuti: nish<sup>u</sup> nete Labrador mak nish<sup>u</sup> nete minishtikut Akami-assissit. Ekute anite tshe ashtakanit uenapissish pimi mak neni aitapashtauna tshetshi tshimatakaniti uashtenimakan-mishtikua.
- Ashinissa kie ashinia tshe apashtakaniti neme atussenanuti, tshika utshipanua nete ashinia ka utinakaniti kie ma tshika aiakanua nete atautshuapa tekuaki nete tshe atussenanut.

## Tatupipuna tshe tananut atussenanuti

Tshekuan tshe atusseshtakanit	Tshe ishpish tshitshipananut	Tshe ishpish punanut	Tshe ishpish atusseshtakanit
Nete tshe mishkutinakanit nanimissiu-ishkuteu tshe takuak nete Muskrat Falls	Pipun 1	Pipun 4	neunnuepishimua
Nete tshe mishkutinakanit nanimissiu-ishkuteu tshe takuak nete Soldiers Pond	Pipun 1	Pipun 4	Nishtunneepishimua ashu nishuaush
Électrodes, apashtakanua anite nanimissiu-ishkutet tshetshi pimipanit ishkuteu nete Anse au Diable	Pipun 3	Pipun 4	Peikunneepishimua ashu nishuasht
Électrodes, apashtakanua anite nanimissiu-ishkutet tshetshi pimipanit ishkuteu nete Dowden's Point	Pipun 3	Pipun 4	Peikunneepishimua ashu nisht <sup>u</sup>
Uashtenimakan-apisha tshe tshimateti nete Labrador	Pipun 1	Pipun 5	Neunnuepishimua ashu nisht <sup>u</sup>
Uashtenimakan-apisha tshe tshimateti nete Akami-assissit	Pipun 1	Pipun 4	Nishtunneepishimua ashu neu
Tshe pakuneitshenanut assit nete Akami-assissit	Pipun 1	Pipun 3	nishtunneepishimua
Tshe pakuneitshenanut assit nete Labrador	Pipun 1	Pipun 3	Nishunneepishimua ashu neu
Tshe itapekamutakaniti atamipekut ka mishapekaki uashtenimakan-apisha mak ashinia tshe takutashtakaniti	Pipun 4	Pipun 4	Kutuasht-tatupishimua



## TSHE ITAPASHTAKANIT KIE TSHE ISHI-NAKATUENITAKANIT NE ATUSSEUN TSHE MISHITUEPANITAKANIT NANIMISSIU-ISHKUTEU

Neme mekuat atusseshtakaniti kie nakatuenitakaniti tshetshi eka natau ishpanit neme atusseun tshe tutakanit, Nalcor tshika utineu nishtunnu auennua. Anitshenat tshe utinakanit tshika nakatuapatamuat kie tshika ueuetinamuat natau ishpanikau ni uashtenimakan-apisha, mitshuapa anite tshe mishkutinakanit nanimissiu-ishkuteu, apisha atamipekut ka ishpaniti kie anite ka apashtakanit tshekuan anite nanimissiu-ishkuteu tshe pimipaniti. Tshika utinakanu kaitusseshiht ka ishi-pikutaht tshetshi tutahk passe tshekuana.



### **Shash pimipaniti nanimissiu-ishkuteu**

Shash pimipaniti ne nanimissiu-ishkuteu, neme ishuteu tshika mishkutinakanu ne ishuteu eka nanitam peikuit ka ishpanit tshika ishinakutakanu tshetshi nanitam peikuit ishi-pimipaniti nete mitshuapit ka mishkutinakanit eshinakuak nanimissiu-ishkuteu nete Muskrat Falls. Nete uashtenimakan-apisha tekuaki tshe ut pimipanitakanit ne nanimissiu-ishkuteu nete assit kie nete atamipekut ashit ka mishapekaki apisha tshe apashtakaniti. Nete Soldiers Pond tshe mishkutinakanit eshinakuak ne nanimissiu-ishkuteu, tshika ishinakutakanu kau ishuteu eka nanitam peikuit ka ishpanit. Nete minuut uashtenimakan-mishtikut tshe itutakanit nete minishtikut.

## TSHE ITAPASHTAKANIT KIE TSHE ISHI-NAKATUENITAKANIT NE ATUSSEUN TSHE MISHITUEPANITAKANIT NANIMISSIU-ISHKUTEU

Neme mekuat pimipanitakaniti, apishish anite tshika pimipanu nanimissiu-ishkuteu nete eshinkatet électrodes. Eukuan neni uet tshi minupanit ne pemipanitakanit nanimissiu-ishkuteu. Nemeni ka mishapekaki apisha ka pimipanitakaniti atamipekut kie ma neni uashtenimakan-mishtikua ka takuaki assit eka minupanitau kie ma natshipaniti nanimissiu-ishkuteu, kassinu ne eshpishat ishikuteu tshika ishpanu anite ka takakanit ishikuteu. Eukuan uet tshi etap pimipanit nuash eshpish tshi ueueshtakanit ne ka pikupanit.

Tshika nakatuapatamuat nenu anitshenat kupanieshat tshe taht nete ka nakatuapatakannit nanimissiu-ishkutenu nete Hydro Place utenat St-John's. Anitshenat ka atusseht nete ka nakatuapatakannit eshpannit nanimissiu-ishkutenu, kassinu nenu eshpish takuannit nete minishtikut nakatuenitamuat nanimissiu-ishkutenu.

### **Tshe nakatuenitakanit kie tshe ueueshtakanit eka minupaniti**

Eshakumipipuna tshika natu-tshissenitakanua neni uashtenimakan-apisha. Nenu tutakau, anitshenat tshe nakatuapatahk nenua uashtenimakan-apisha, tshika apashtauat utapana ka nishtukateniti, ishkitua, (pipunitapana kie ma neshkitu) kie ma kauuashtaitshet (sheuekatshua). Tshipa tshi ueueshtauat tshekuannu ka pikupannit kie ma tshipa tshi mishkutumutauat tshekuana eka menuaniti.





---

## TSHE ITAPASHTAKANIT KIE TSHE ISHI-NAKATUENITAKANIT NE ATUSSEUN TSHE MISHITUEPANITAKANIT NANIMISSIU-ISHKUTEU

Neni ka mishapekaki apisha ka pimapekamuti atamipekut tshika uauapatakanua katshi nishupipuna pimipaniti, tshika pimipanitakanu anite atamipekut utapan tshe aiatinakanit anite ut assit. Eshk<sup>u</sup> ne minuati ka itashtakaniti ashinia tshetshi minushteti neni apisha tshi nishupipuna, apu anu tshika ut nakatuapatakaniti neni ashinia. Apu itenitakanit tshetshi ueueshtakaniti neni apisha ka mishapekaki.

Anite tshe pimipanit nanimissiu-ishkuteu ka ishinikateti éléments des électrodes, mitshetupipuna tshipa tshi minuaua, apu tshipa uipat mishkutinakanua.

Tshetshi eka kushtikuak anite tshetshi itutenanut nete uashtenimakan-mishtikua tekuaki, neni mashkushua, mishtikuat netautshiht anite, atut tshipa ui mishta-tshinuashkushuat. Anitshenat mishtikuat ka ishkuashkushit anu kutuashtushit min patetat tshika ui mannakanuat anite. Tshimikauakanitau anitshenat mishtikuat, katshimiputatshepanit tshika apashtakanu kie ma tshipa shutshishtakanua matshinatukun katshi eshakumi-nishuasht-tatupipuna.

### **Tshe pimipanit ishuteu**

Neme tshe pimipanit anite nanimissiu-ishkuteu mak neni électrodes eshinikateti, eukuani iapashtakaniti tshetshi pimipanitakanit nanimissiu-ishkuteu, tshe itutakanit nete natamik<sup>u</sup> kie katak<sup>u</sup>. Peikuau tshi tshishtapanitakanitau neni uashtenimakan-mishtikua kie uashtenimakan-apisha kie minu-pimipaniti, apu mishta-kushtikuak tshetshi ishkuashut auen kie tshetshi ishkuashakanit tshekuan. Tshipa tshi petakuan tshekuan anite apishit kie eshkuteut mak e unuipanit anite tshekuan. Ne tshekuan tshe unuipatet, tshe unuipanit anite, tshika ui tutakanu tshetshi eka mishta-mishat kie tshika ui nashatakanu neme ka ishi-patshitinakanit. Menupaniti tshika ui upime anite utenaua tekuaki pimapekamutakanu tshekuan.



## E NATU-TSHISSENITAKANIT ASSI E AITUTAKANIT

Ne e natu-tshissenitakanit assi e aitutakanit, mishta-apatana an anite mekuat e atusseshtakanit ne ua mishituepanitat nanimissiu-ishkutenu ne Nalcor. Nalcor ui utitaimu nishtu tshekuana nenu iapashtakatshet ka natu-tshissenitakanit assi e aitutakanit.

Nemenu ushkat, ka natu-tshissenitakanit assi e aitutakanit mak neme e natu-tshissenitakanit tshetshi ma tshi minupanit e tutakanit ne atusseun, apashtakanipani neni tshetshi minutakanit ne ua mishituepanitakanit nanimissiu-ishkuteu mak tshetshi eka anu mishta-matshi-tutakanit assi. Mate, neme ka ishi-mishkakanit neme ka natu-tshissenitakanit anite etaht aueshishat kie anite ka nitautshiki nipisha kie uapikuna, apashtakanipan an tshetshi nishtuapatakanit ne eshinakuak assi.

Ne kutak tshekuan, Nalcor aimiepan nenua auennua tshe katshitauakaniti nete atussenanuti, mishituepanitakanniti nanimissiu-ishkutenu. E aimiat auennua, Nalcor ekue tshi nishtuapamat mak ekue tshi nishtutak nenu etenitaminiti kie eshi-kukuetshimishuniti auennua, nete utenassit epiniti kie nenua ashit innua.

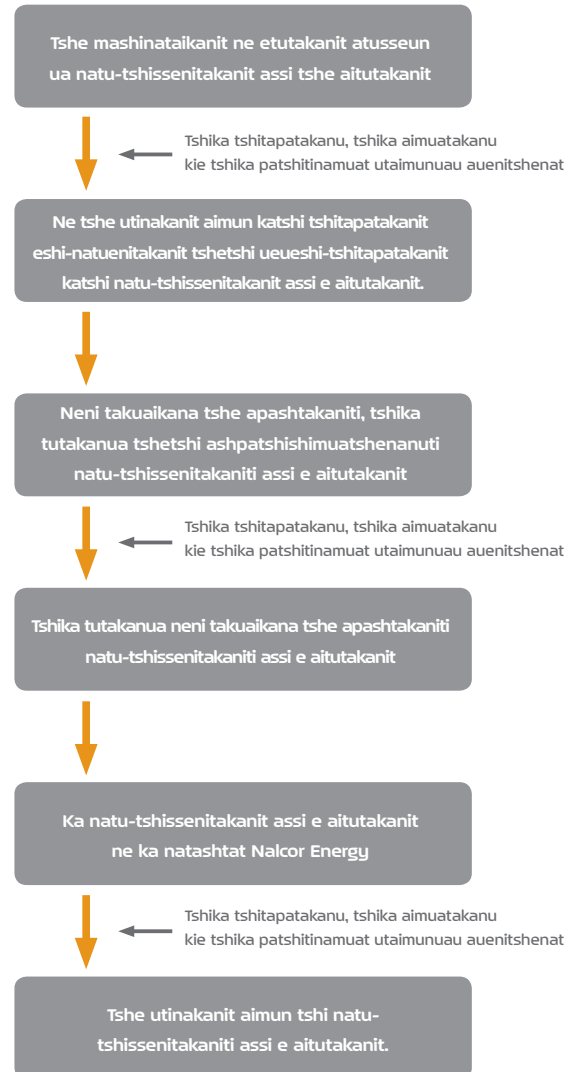
Ek<sup>u</sup> ne mashten tshekuan, Nalcor tshika patshitinam<sup>u</sup> aimunnu, tshika mineu nenua ka tshitapataminiti atusseunnu tshe tutakannit, tshetshi utinakanit aimun tshetshi ma tutakanit ne atusseun mak tan tshe ishinakutakanit tapuetakaniti tshetshi tutakanit. Neme natu-tshissenitakaniti assi tshe ishi-katshitakanit, uemut an tshika ui tutakanu. Tshika uitshikuat nenu tshishe-utshimauat tshetshi utinahk aimunnu neme ua mishituepanitakanit nanimissiu-ishkuteu mak kanapua tshetshi nakatuapatakanit takuaikan mak tshetshi nashatakanit ne ka ishi-natuenitakanit.



Neme tshe natu-tshissenitakanit assi tshe aitutakanit, eukuan ume eshinakuak tshekuan tshe ui tutakanit:

- **Ka natashtakanit nete tshishe-utshimat:** Tshishe-pishimua 2009, Nalcor natashtueu tshishe-utshimaua, Uatauat mak Akami-assissit, nenu atusseunnu ua mishituepanitat nanimissiu-ishkutenu.
- **Etashuenanut neme natu-tshissenitakaniti assi:** Ne etashuenanut natu-tshissenitakaniti assi eshi-katshitaikanit, tshishe-utshimauat nenu unuipanitapanat nissi-pishimua 2011. Ne etashuenanut, uitamuakanu ne Nalcor tshekuannu tshe ui tutak anite natu-tshissenitaki assinu.
- **Natu-tshissenitakaniti assi tshe ishi-katshitaikanit, tan tshe aitutakanit:** 2012, Nalcor minepan nenua tshishe-utshimaua nenu ka natu-tshissenitak assinu, tan eshi-katshitaikannit.
- **Tshe utinakanit aimun:** Anitshenat utshimauat ka atusseshtahk assinu nete tshishe-utshimat, Utauat mak Akami-assissit, tshe utinahk aimunnu, tshetshi ma tapuetakanit ne atusseun ua tutakanit, ua mishituepanitakanit nanimissiu-ishkuteu mak kanapua, tan tshe itatussenanut tshetshi minuatakanit ne atusseun tshek ma tuapuetakaniti.
- **Kanuat mak tapuetamuna:** tshek ma tapuetakaui anitshenat utshimauat tshetshi tutakanit ne atusseun, Nalcor tshika ui mitshet katshitineu kanua, tapuetamuna, nenu etapuetakannit tshetshi tutakannit atusseunnu, tshetshi mishituepanitat nanimissiu-ishkutenu.
- **Tshe nakatuapatakanit kie tshe nashatakanit atusseun:** Tshika natuenitakanu tshetshi minu-nakatuapatakanit atusseun tshetshi patshitinakaniht kanuat, tapuetamuna. Nalcor tshika apashtau nenua atusseuakana tshetshi natu-tshissenitak tshetshi ma miam ishinakuanukueni neme ka natu-tshissenitakanit assi tshe aitutakanit neme atussenanuti.

### Tshe ishi-natu-tshissenitakanit assi e aitutakanit





## TSHE NATAKANIHT AUENITSHENAT

Nalcor ui tshissenitam<sup>u</sup> tan etenitaminiti auennua nenu atusseunnu ua tutak, tan tshe ishi-katshitaukuht nenu mishituepanitakannit nanimissiu-ishkutenu mak ui tshissenitam<sup>u</sup> tshekuannu eshi-kukuetshimitishuniti auennua. Nete utat mitshetupipuna, nasht peikumitashumitannu tatuau ishpish utshimau-aiminanikupan, e natshishkuakaniht auenitshenat ka itashueht, atusseutshuapa kie anitshenat etusseshtuht auennua tshetshi uauitakanit ne atusseun ua tutakanit. Nalcor, nishunnu ashu peikushteu tatuau eshpish nutenam<sup>u</sup> tshishtukana nenu 2010 mak 2011 nete eshpishat Akami-assiss kie Labrador. Nemenu e nutenaki tshishtukana, anitshenat kupanieshat etusseht nete Nalcor aimiepanat mitshet auennua tshetshi patshitinahk aimunnu, tshetshi tshiuenamuat eshi-kukuetshimitishuniti mak tshetshi uauitahk assinu tshe ishi-natu-tshissenitakannit. Nalcor natepan kie innua nete Labrador ka taniti kie nenua Uepishtikueiau-assit epiniti, kaiassimeua mak nenua mashinaikanitshuapa NunatuKavut tshetshi natutamuat etenitaminiti mak tshetshi patshitinak aimunnu, nenu ua mishituepanitat nanimissiu-ishkutenu. Tshika apashtau nenu aimunnu ka minakanit ne Nalcor tutaki nenu atusseunnu.

Mamitshetuaht ishinakuannu aimunnu petshitinak ne Nalcor. Nemenu peik<sup>u</sup> eshi-patshitinak nete ka takuannit atusseu-katshitapatakannit, uin ka tipenitak ([www.nalcorenergy.com/transmission-project.asp](http://www.nalcorenergy.com/transmission-project.asp)), mashinaimueu auennua nete ut atusseu-katshitapatakannit, tipatshimu-mashinaikanissa unuipanitau, mashinaikanissa, natshiuauit<sup>u</sup> mak katipatshimu-mashinaitsheshiniti aimieu. Nalcor mitshetuaht ashit natshiuaimieu auennua nete miamuitunanuti mak uetshimau-aiminanuti, anite tshe ashu-patshitinakanit ne aimun.

Ne etashuenanut neme natu-tshissenitakaniti assi tshe aitutakanit, natuenitamuakanu Nalcor tshetshi ueueshtat nenu eshi-kuketshimitishuniti auennua. Natuenitamuakanu ashit Nalcor tshetshi apashtat nenu eshi-nishtuapataminiti auennua nete utenassit kie nenua innua. Nenu eshi-nishtuapatakannit, apashtapan Nalcor tshetshi minunishtutak nenu assinu eshinakuannit nete tshe tutak atusseunnu tshe mishituepanitat nanimissiu-ishkutenu.

Nalcor natepan kie eshk<sup>u</sup> nateu auennua mak nenua ashit innua ka takaukuniti atusseunnu. Nalcor eshk<sup>u</sup> tshika mineu nenua tshetshi taniti nete natakanitau auenitshenat.





Stantec 2011 ©

## ESHINAKUAK ASSI ANUTSHISH

Neme eshinakuak assi nete tshe tutakanit atusseun, ne ua mishituepanitakanit nanimissiu-ishkuteu, mishta-natu-tshissenitakanipan tshetshi anu minuat ne atusseun tshe tutakanit nasht eka mamashitakanit ne tekuak assit. Nalcor natamupan eshi-nishtuapatakannit nete utenassit mak nenua innua eshi-tshissenitaminiti tshetshi nishtuapatak eshinakuannit assinu.

### **Tshishik<sup>u</sup> e nenetutakanit**

Mishta-apatannu tshetshi minuanit nenu e nenetutahk tshekuannu tshishikut auenitshenat mak aeshishat kie nutim eshi-nitautshik ute assit.

Neme eka menuat natamik<sup>u</sup> tshekuan e piputepitakanit nete tshishikut, eukuan an etamenitakanit, eukuan uet mishta-mishkutshipanit eshinakuak tshishik<sup>u</sup>. Apu mishta-mishat ne eka menuat ka piputepitakanit tshishikut, uetshipanit nete Akami-assissit mak Labrador, nish<sup>u</sup> ishpish anite peikumitashumitannu ishpishat nete nutim anite Kanata-assit. Apu mishta-mishanit nenu eshpish piputepitahk eka ka minuanit tshekuannu, apishashinu nenu e tshitapatakannit nete nutim eshpitashkamakat assi.



Tshekat kassinu nete assit tshe itapekamutakaniti nanimissiu-ishkuteu-apisha, mishta-minuau kie uashkamau tshishik<sup>u</sup>, itenitakuan an miam nete eka pessish utenat tekuak kie upime ka takuak nutshimit. Nete ka apinanut mak ka mishta-atussenanut, ne tshishik<sup>u</sup> apu mishta-uashkamat muk<sup>u</sup> apu mishta-ait ishinakuak peikuan.

Neme tshekuan pietakuak nete tshe atussenanut, anite tshe pimapekamuti uashtenimakan-apisha, muk<sup>u</sup> ne e nutik pietakuak e aiatahiht mishtikuat, aueshishat e petakushiht mak ne nipi e pimitshuak mak kashkanat petakushuat. Nete e apinanut kie e tananut ka anite meshta-atussenanut, anu tshikauetakuan tshekuan.

## Assi

Neme eshinakuak tshishik<sup>u</sup>, mishta-mishkutshipanu mani, mishta-takau pepuki kie mishta-tshishiteu napiki nete taushkamit Labrador mak apu mishta-takat pepuki kie apu tshishitet napiki nete Avalon, pushku-minishtikut. Mitshetuait ishi-tshishikau nete pessish shipekut, détroit de Belle Isle, ishkanipipuna.

Neni ashinia nete tshe atussenanut, tshe itapekamuti uashtenimakan-apisha mitshetuait ishinakuana. Nete ussit assit, mamitshetuait ishinakuan assi. Nete Labrador, nete assit takuan shashish tshekuan ka utshipanit shipekut, tshekuan uetshipanit nete mishkumi ka tat, nekauapishkau, nuash mishta-pitshissipanishua ashinia. Nete minishtikut, iapit mamitshetuait ishinakuan assi, ashissiu, ashiuapishkau, nekau mak ashinia takuana. Neme assi nanitam ka mashkutik ishkanipipuna, apishish muk<sup>u</sup> anite tshe atussenanut takuan ne eshinakuak assi, nete taushkamit Labrador, utshit Long Range nete Northern eshinkatet.



Neme atusseun tshe tutakanit, tshe mishituepanitakanit nanimissiu-ishkuteu nete itetshe mamit uinipekut anite Labrador tshika pimapekamutakanua uashtenimakan-apisha nuash nete shipekut détroit de Belle Isle mak neme mishta-minishtik<sup>u</sup> Akami-assiss. Mishta-mitshetuait ishinakuan anite, minashkuau, mushuau, masseku, shipissa kie shipua takuana. Ne eshinakuak assi, ekute uet tshissenitakanit tshek<sup>u</sup> nipisha kie mishtikuat natautshiki anite kie aueshisha etaht.

Mishta-apatana neni nipisha netautshiki anite tshetshi minushtet ne assi kie eshinitautshik. Neme kassinu eshpishat tshe pimapekamuti uashtenimakan-apisha, nete tshika pimapekamua anite ka taht sheshekatikuat, innashtat, mitshet massekua kie

nipissa, shipissa kie shipua. Nete eshnikatet d etroit de Belle Isle, nishuait anite assia tekuaki massekua takuana, nete uinipekut kie nete minishtikut, mishta-nutin kie neni nipisha natautshiki mishta-takuapekashua.



Nalcor shash tshi tutueu assiu-kanua kie natu-tshissenitamupan eshinkuannit assinu, tshetshi tshissenitak tshekuannu natautshinnit, tan eshinkuannit assinu. Nenua ashit natu-tshissenitamupan ne Nalcor, etatiniti assia nipia tekuanniti kie shipua mak nenua nipisha eka ka mitsheniti kie ka mashinataikanniti, mishtikua eshi-nitautshinniti nete assit. Ne tshekuan eshi-nishtuapatakanit, apashtapan ne Nalcor tshetshi nishtutak eshinkuannit nenu assinu tshe katshitaikannit nenu atusseunnu tutakaki, pimapekamutau uashtenimakan-apisha.

Nete assit tshe atussenanut, tshe pimapekamuti uashtenimakan-apisha, eukuanat anitshenat aueshishat ka mamishishtiht etaht anite, mush, minashkuau-atik<sup>u</sup> mak mashk<sup>u</sup>. Mishta-mitshetuait mushat muk<sup>u</sup> anu mitshetuait nete minishtikut Akami-assissit mak at nete Labrador. Anitshenat minashkuau-atikuait mishta-atshupanuait kassinu anite ka taht kie nakatuapamakanuait mak natu-tshissenimakanuait nete Akami-assiss-tshishe-utshimat. Ek<sup>u</sup> ne mashk<sup>u</sup>, anu ka mishishtit aueshish nete etat tshe pimapekamutakaniti uashtenimakan-apisha, kassinu anite tau eshpishanit assinu. Mitshetuait anite utshipanu ne aimun, mitshetuait anite utinakanu iapit nete Akami-assiss-tshishe-utshimat.



Mitshetuait kutakat aueshishat etaht nete tshe atussenanunit, anite tshe pimapekamutakaniti uashtenimakan-apisha miam mate maikan, uapishtan, pishu, shitaikan, matsheshu mak amishku. Tauat kutakat etatu epishissishiht aueshishat etaht





miam anitshenat apikushishat muku ua ishpishtiht kie ishinakushiht.

Mitshet pineshishat, pineshuat, missipat kie ka nikamushiht pineshishat tauat nete tshe atussenanunit, anite tshe pimapekamuti uashtenimakan-apisha. Passe anitshenat pineshishat tauat ishkanipipuna ek<sup>u</sup> passe takushipanuut shakuaniti. Kassinu anitshenat pineshishat, missipat tshiuapanuat kau kie natshi-pineauiat ekue ashupamaht tshetshi inniunniti utauassimuaua tshetshi kau tshiuapaniht nete ka tshishitenit assit pepuniti.

Ne Akami-assiss-tshishe-utshimau kie ne Utaua-tshishe-utshimau mashinataimupanat tsheku-nipisha, tsheku-uapikuna kie tsheku-aeshisha tshe ui minu-kanuenimakanniti kanapua shash passe apu mitshetiht kie shash tshitshue atshupanuut. Neni passe nipisha mak uapikuna, takuana nete tshe atussenanut, nete tshe pimipanitakaniti uashtenimakan-apisha mak nete kutaka nitautshina ashinit nete pessish Shoal Cove. Nalcor tshissenitam<sup>u</sup> nenua tekuanniti kie tshika ui akua tutam<sup>u</sup>, upime anite tshika ui atusseu. Neni nipisha kie uapikuna ishinikatakanua braya de Long mak braya de Fernald. Ek<sup>u</sup> anitshenat aeshishat meshinatauakaniht anite kie tshe nakatuenimakaniht tshetshi akua tutuakaniht miam mate uapishtan ka tat nete Akami-assissit, nutshipaushtikueshishat, pineshish ka ishinikatakanit moucherolle à côtés olive, kutak pineshish ka ishinikatakanit grive à face grise, tshatshakanu, uhu ka tat massekut, mishikushk<sup>u</sup>, tshiashk<sup>u</sup> ka uapishishit, miam teshtipishish eshinakushishit ne pineshish mak pishk<sup>u</sup>. Nishuait anite tauat minashkuau-atikuat nete tshe atussenanunit, nete itetshe tshe pimapekamutakaniti uashtenimakan-apisha nete itetshe tauat utshit Red Wine mak nete utshit Mealy.

### Shipua, shakaikana (nipia)

Nishuaush anite ishpish peikumitashumitannu eshpishat ne assi nete Akami-assissit innipi takuan. Nalcor tutuepan assi-kanua tshetshi nukuannit nete eshitshuanit nipinu. Natu-tshissenitamupan eshinakuanniti nenua shipua, massekua, pikussipekua nete ka takuanniti tshe pimapekamutakaniti uashtenimakan-apisha. Natu-tshissenitapan kie ne eshitshuak kie pemikaut nipi, eshpishipeiat kie nete eshinakuak shipit.



Stantec 2011 ©

Nete taushkamit Labrador assit kie nete mamit, neme tshe pimapekamutakaniti uashtenimakan-apisha, peikumitashumitannu ashu peikushteu-tatunnu ashu neu itatina shipua kie shipissa, atshitakanua neni shipua ka ishinikateti Kenamu kie St-Paul. Nete minishtikut, Akami-assissit, anite tshe pimapekamuti uashtenimakan-apisha, nishtumitashumitannu ashu peikushteu-tatunnu ashu nish<sup>u</sup> shipua kie nipia tshika tepaikanua. Nete taushkamit eshinikatet Northern, apu tshekuan anite shuk<sup>u</sup> takuak nete tekuaki shipua mak nipi, nete natimit ashit ne shipu tekuak Main ka ishinikatet. Nete taushkamit mak mamit Akami-assissit, nete assia tshe taushkakaniti, apinanu anite kie takuana apu shuk<sup>u</sup> tshekuan takuak anite assit miam neme shipu Humber, Exploits ashit Gander. Neni kutaka shipu tiaushkakaniti, anite tshe pimapekamuti uashtenimakan-apisha nete pushku-minishtik<sup>u</sup> tekuak Avalon ka ishinikatet, neni shipua tshe katshitaikaniti shipu: Northern Arm, shipiss Southwest, shipu Southwest, Spread Eagle mak shipiss Witch Hazel.



Nalcor utinamupan nipinu nete iteshe shipit, massekut kie shakaikanit nete tshe pimapekamuniti uashtenimakan-apisha mak nenua eshi-kanuenitaminniti aimunnu Akami-assiss-tshishe-utshimaua kie Utauau-tshishe-utshimaua apashtapan. Natu-tshissenitakanipan ne nipi tshetshi ma minuakamikue miam neme kutak nipi tekuak nete ait, anite Kanata-assit, itakamu miam kassinu anite ait anite Akami-assissit tekuak. Passe anite ka utinakanit nipi, uapatakanu anite apishishish ne eshinikateti aluminium mak cadmium.

Nalcor natu-tshissenimepan ashit namesha etaniti nete shakaikanit kie shipit, nete tshe atussenanunit, tshe pimapekamutakaniti uashtenimakan-apisha. Neme eshi-mishkakanit tshekuan itapashtakanu tshetshi nishtutakannit anite etaht anitshenat nameshat nete shipit kie shakaikanit. Nishunnueshuat anite eshinakushiht nameshat neshtuapamakaniht etaht anite shipit kie shakaikanit. Nete meshta-mitshetiht nameshat, nete assit Labrador taushkamit kie nete mamit uinipekut. Anitshenat nameshat etaht, matamekuat kie utshashumekuat.

Peikussu ne namesh etat anite shipit tshe ui nakatuapamakanit, tshe ui minu-kanuenimakanit, ne shipu tekuak nete tshe atussenanut, anite tshe pimapekamuti uashtenimakan-apisha,

eukuan an ne upimishui. Ne namesh, kushkatakanipan nemenu ka natu-tshissenimakaniht nameshat nete taushkamit eshinkatet Northern.

### Shipek<sup>u</sup>

Nete eshinkatet détroit de Belle Isle, ishkuau kutunnu min patetat tatunnu ashu nishuasht tipashkunikan neme tshe tashkamipanitakaniti uashtenimakan-apisha. Nalcor tshitapatamupan eshinakuannit assinu anite tshe pimapekamutakaniti uashtenimakan-apisha, atamipekut tshe itamutakaniti tshetshi nishtutak nenu eshi-nitautshinnit anite tshekuannu kie aueshisha etashiniti. Nenua ashit natu-tshissenimepan mishta-mishkumia, eshitshuannit mak eshi-tshishikanit. Nalcor nenua apashtapan ka petakanit anite atamipekut, akunikannu mak utinamupan nipinu uetshipannit nete shipekut, atamipekut uetshipannit. Mitshet anite tshekuan takuan anite eshtet nete atamipekut, nekau, nameshishat mak natamik<sup>u</sup> tshekua.



Nete itetshe Labrador, pessish tekuak ne eshinkatet détroit de Belle Isle , mishta-ishpitanutinau, peikushteu-tatumitashumitannueshit ashu nishuaush-tatunnu ashu neu min nisht<sup>u</sup> nuash nishutshishemitashumitannueshit ashu peikushteu-tatumitashumitannu ashu patetat-tatunnu ashu nisht<sup>u</sup> min peikushteu nete pessish shipek<sup>u</sup> tshekua. Akamit minishtikut, Akami-assiss, apu shuk<sup>u</sup> ishpanat assi anite nipit, peikushteu-tatumitashumitannueshit ashu nishuaush min neunnu ashu nisht<sup>u</sup>. Nete eshinkatet détroit de Belle Isle, neumitashumitannueshit ashu peikunnu min pekunnu ashu nisht<sup>u</sup> ishpish timiu nete mamen. Mishta-mishapishkua ashinia nipit tekuaki, mamitshetuait ishinakuana ashinia, eshat tauat kie nekau takuan anite atamipekut. Nalcor akunimupan anite assiu-kanut nete

atamipekut kueshtikuannit tshetshi atussenanunit, nenua tekuanniti ka mishapekaniti apisha, shashish ishkuteu-uta ka kushapeti. Tshika ui upime anite itutenanu.

Nete tshe takuak nanimissiu-ishkuteu, anite tshe tatakanit nete eshk<sup>u</sup> eka nipit itutitakanit, Anse au Diable ishinakuan anite atamipekut ka ashiauapishkat, ashinia takuana mak nekau. Nete kutak Dowden's Point, mishta-mishapishkaua ashinia tekuaki atamipekut.

Neme eshitshuak nete détroit Belle Isle, ne eshinakuak assi anite ishitshuan kie ashit uet ishinakuak ne eshi-petshitshuak, eshi-ikashtet mak eshi-nutik. Neme eshi-nutik nete shipekut, natimit utin kie ma tshiuettinussit pepuki mak pashtautin kie ma akua-nutin shakuaki. Kashkanat, apu mishta-ishipanishiht, apu anu ishpishtihit peikushit min kutuasht-tatunnu ashu neu. Meshta-nutiniti, tshipa tshi ishpishtuat nishunnueshit ashu nish<sup>u</sup> min peikushteu-tatunnu ashu kutuasht.



Nete itetshe ka uashaua ka ishinikatet Conception, ishitshuan miam eshinakuak uashau kie atamit nipit. Natimit utin tekuatshiki kie pepuki, akua-nutin shakuaki kie napiki. Kashkanat ishpishtuat kutunnueshit min peikunnu ashu kutuasht.

Ne eshinikatet détroit de Belle Isle, shash mashkutin neme pishimuss. Tshishe-pishimua, mishta-mishkumi nashipepanu. Neme ishkuaiet nissi-pishimua kie ma uapikun-pishimua, shash apashu mishkumi kie ma pikupanu. Tshekat kutuasht-tatunnu kie ma peikushteu-tatunnu papamaukutina mishta-mishkumia eshakumipipuna nete itetshe détroit de Belle Isle neme nissi-pishimua kie uapikun-pishimua.

Nalcor natu-tshissenitamupan eshpush tatuetakannit nete nipit, nishtuait anite détroit de Belle Isle tipaimupan eshpush tatueuepannit. Apu anu mishta-tatuetakanit mak at nete ait uinipekut. Neni nishutshishemitashumitannu ashu nishuaush-tatumitashumitannu ashu peikushteu-tatunnu ka ishpush ashu-pimipanitakaniti tshekuana, peikutshishemitashumitannu ashu peikushteu-tatunnu ashu peikunnu, aueshishat ka taht shipekut nenu tepueuat.



Akunikannu apashtapan Nalcor tshetshi natu-tshissenitak eshinakuannit tshekuannu tekuannit atamipekut nete unipekut, tsheku-nipisha, tsheku-aeshisha. Neme tshekuan tekuak anite nipit, umitshimuau nameshat, shashapina. Anitshenat ashit aeshishat etaht anite atamipekut (miam mate: kautat, akaneshautitshiat, papatsheshat, kaiapishapessishiht, pemituteuat, ashatsheuat) mak nameshat miam ne unushu, kashkanamek<sup>u</sup>, lompe, makanu, papakatishu ka uinipishit mak kaushkanusht. Miam netaikau shipua kie nete shipekut etataui, uapamakanuat ashit utshashumekuat, tau kie matamek<sup>u</sup> kie shushashu nete shipekut.

Anitshenat etaht nameshat uiapamakaniht nete ka uashat Conception ka ishinikatet : tshipa tshi uinakanu ne ashatsheu, kaiapishapessishiht, pemituteu, kaushkanusht, makanu, namesh ka ishinikatakanit lompe, mak unushu.

Kutunnueshuat ashu nishuaush nameshat meshinatauakanit nete tshipa tauat neme tshe atussenanut, anite tshe itapekamutakaniti uashtenimakan-apisha, matshi-namesh, mak anitshenat nameshat eshinikatakanihit loup atlantique, loup à tête large mak loup tacheté.

Nalcor natu-tshissenimepan kutaka namesha ka mamishishtiniti miam nenua mishtamekua, kuekuatshessa mak atshikua nete détroit de Belle Isle kie ka uashat Conception. Nishunnueshuat aeshishat, nameshat uiapamakaniht nete etaht, napiniti anu tauat. Nete assit, tshipa tshi uapamakanuat kutakat ka mamishishtihit nameshat, mishtamekuat eshinikatakanihit rorqual bleu mak rorqual commun. Missinakuat ashit tauat, nishuait ishinakushat, uapamakanuat nete shipekut, détroit de Belle Isle kie nete mamit Akami-assiss, nete ka uashat Conception eshinikatet.

Tshetshi natu-tshissenimat eshinakushiniti pineshisha etaniti shipekut, Nalcor nishtuait eshinakushiniti pineshisha natu-tshissenimepan, tshitapatuamuepan tanite etaniti. Nenua pineshisha ka taniti nete ka mishta-timinit (mate eshinikatakanihit fulmars, puffins, océanites tempêtes mak uetatakat). Tauat ashit shishipat eka shuk<sup>u</sup> e timinit etaht (nishkat, missipat, muakuat mak tshinashat) mak anitshenat pessish etat assinu tekuannit (aiapanish, teshtapishish). Kassinu anite peneiauiht, anite etaht, mashinataikanipan anite assiu-kanua mak anite pemaht iapit tshissenitakannu. Anitshenat shishipat meshinatauakanihit, tshipa tshi uinakanuat tshiashk<sup>u</sup>, nutshipaushtikueshish (mamit ka tat) mak ne mishikushk<sup>u</sup> (mamit ka tat) mak ne miam teshtipishish ka ishinakushishit ne pineshish.



## TAN ETASHINIHT ANITE AUENITSHENAT EPIHT ANUTSHISH

Neme etashinanut nete epiht auenitshenat, shash tshi minu-natu-tshissenitakanu, nete atussenanuti, mishituepanitakaniti nanimissiu-ishkuteu. Tutakanipan tshetshi muk<sup>u</sup> ne menuat tshekuan anite atussenanuti tshe uapatakanit kie eka shuk<sup>u</sup> mishta-mishat ne metshikauak nukuak.

### **Ka natuapatshitshenanut shashish ka aishpanit kie ka ishi-kanuenitashunanut**

Nalcor natu-tshissenitamupan nenu eshi-kanuenitashunanunit katshi natuauakaissenananunit tshetshi mishkakanit tshekuan atamit assit (miam ne eshi-takuak tshekuan nete shashish tipatshimun ka aitananut, aitun, aiamieun, eshi-takuak tshekuan assit, ka mataunakuak kie ka minuashit), ka natuapatakanit natamik<sup>u</sup> tshekuan tekuak assit, ashinit (shashish anitshenat aueshishat ka taht ute assit ka uapatakannit anite ashinit) mak neme e aishinakuak tshekuan tshematakanit (mitshuapa, kassinu tshekuan ka tshimatakanit kie ma ka takuak anite assit mak ne assi e aishinakuak ka mishta-apatentakuak kie ka mataunakuak) nete tekuak tshe atussenanut, tshe mishituepanitakanit nanimissiu-ishkuteu. Shashish anite uet inniut auenitshenat nete Akami-assissit kie Labrador, shash anu nishuaush-tatutshishemitashumitannuepipuna. Nalcor, nenua apashtau tekuanniti mashinaikana nete uetshipaniti tshishe-utshimat mak nete ashit ka nanatuapatitshenanut nete assit, nipit. Nalcor uapatamupan tanite tekuanniti nenua assia anite ka natuauakaissenananunit, anite ka mishkakannit tshekuannu assit kie ashinit nete tshe atussenanunit, tshe pimapekamutakaniti uashtenimakan-apisha. Apu uapatakanit tshekuan anite tshipa tshimateu. Nalcor mashinataimupan iapit anite assinu etenitak tshipa tshi mishta-mishau anite nanatuapatitshenanut, eshk<sup>u</sup>

eka nita ka itutenanut anite. Mekuut netu-tshissenitakanit tanite tshipa pimapekanu ne meshkanau anite tshe takuaki uashtenimakan-apisha, Nalcor shash nenu natu-tshissenitamupan eshinakuannit assinu.

Takuana anite assit netuauakaitshenanut, nete tshe atussenananut, anite tshe pimapekamuti uashtenimakan-apisha nete Labrador, uinipekut. Ne netuauakaitshenanut, tshekat kassinu upime takuana anite tshe atussenanut, tshe pimapekamuti uashtenimakan-apisha. Ishkuteu-ush ka kushapet, ka ishinikatakanit HMS Raleigh ekute nete ekutik détroit de Belle Isle, muk<sup>u</sup> apu tshika ut atussenanunit ante ekutinit. Nete minishtikut, pessish nete Chapel Arm, takuan anite uiesh etaht eshat shashish ka akussueht ashinit, ekute anite tshe pimapekamuti uashtenimakan-apisha. Assiu-kanua tutuepan Nalcor tshetshi eka atussenanut anite tshekuan tekuak.

### **Utenassa anite epinanut**

Neme tshe atussenanut, anite tshe ut mishituepanitakanit nanimissiu-ishkuteu, nete itetshe Labrador takuan, taushkamit kie nete mamit pessish uinipekut, neme tekuak pushku-minishtik<sup>u</sup> Northern, nete tetaut assi tekuak Akami-assiss kie mamit nete tekuak pushku-minishtik<sup>u</sup> Avalon. Takuana passe utenaua tekuaki pessish anite tshe atussenanut, anite tshe pimapekamuti uashtenimakan-apisha. Neme assi, anite tshe atussenanut, takaikanua neni assia, utenaua eshinikateti: Forteau, Shoal Cove Est, Savage Cove-Sandy Cove, Nameless Cove, Flower's Cove, Grand Falls-Windsor, Port Blandford, Clarendville, Goobies, Sunnyside, Arnold's Cove, Southern Harbour, Norman's Cove-Long Cove, Chapel Arm, Whitbourne, Blaketown, Avondale, Harbour Main-Chapel's Cove-Lakeview mak Holyrood.

Tshetshi minu-nishtutak nenu eshi-kukuetshimitishunanunit anite utenassit, Nalcor natamupan aimunnu tshetshi nishtuapamat auennua anite epiniti, etashiniti, eshinakuannit assinu epiniti kie tshekuannu anite kenuenitaminiti (mate, meshkanau, katueunanut, utaipan, kamakunueshiutshuap); mak nenu akushiu-atusseunnu (mate, akushiutshuap kie ma anite etutenanut tshetshi natukuiakanit auen, e kukuetshimitishunanut ne auen iakushiti) tshetshi nishtutak eshi-kukuetshimununit kie tshekuannu miamitunenimikuniti utenassa. Ne etatussenanut, mitshetuau mamuitunanuipan tshetshi utshimau-aiminanut, nete mitshet utenassa.

### **Eshi-mishituepanit atusseun kie e shuniatshenanut**

Mitshetupipuna eshpish, ne assi Akami-assiss kie Labrador, apu ut shuk<sup>u</sup> mishtaminupannit nete e mishituepanitakannit atusseunnu kie e shuniatshenanunit kie ekute anu nikatshipanipan mak at ne eshpishat Kanata-assi. Neme pipun ka tananut nishuaush-tatunnu mak neme patutepannanut peikushteu-tatunnu, eukuan tshitshue eka menupanit, apu pimpanit ne ka kussenanut unushu. Nenu eshpish shuniatshet ne Akami-assiss kie Labrador, etatu anutshish amatshuepannu, neme kanapua ka utaikanit nete atamipekut ne pimi, ashinia e munaikaniti nete nutshimit Labrador mak ne ashini e munaikanit ka ishinikatet fer nete natimit Labrador. Nemeni kutaka atusseutshuapa tekuaki nete Akami-assissit, eukuan neni ka tutakanit nanimissiu-ishkuteu, ka kussenanut, ka tshimikaitshenanut mak maniteuat ka ashuapamakaniht. Neme pipun 2009, anu 15 000 atusseutshuapa itatinupani nete Akami-assiss mak Labrador. Tetaut neni atusseutshuapa tekuaki, apu mishati, peik<sup>u</sup> nuash neu itashuat anitshenat kupanieshat etusseht. Eukuan ume etatussenanut nete atusseutshuapit, atauenanu, akushun atusseshtakanu, atautshuapa kie ka manutshenanut.



Nalcor natu-tshissenimepan etashiniti auennua tshipa tshi atussenua, tsheku-atushkan tekuak mak tsheku-atusseutshuapa tekuaki, tshipa tshi uitshiakanu auen kie tshipa tshi atuatshenanua atusseuakana tshe apashtakaniti nete tshe atussenanuti. Nenu etutak Nalcor, ekue nishtutak tan tshipa ishi-uitshiaushinanu anite e mishituepanitakanni atushkana kie e shuniatshenanut mak atusseutshuapa tekuaki nete Akami-assissit neme mishituepanitakanni nanimissiu-ishkuteu.

### **Tan etapashtakanit assi kie ne eshi-takuak**

Nete kassinu eshpishat Akami-assiss kie Labrador, neme etapashtakanit assi kie ne eshi-takuak eukuan ume tshipa tshi uauitakanu, e nataunanut, e ashtakaniti tishunakana, e kussenanut, e assitshenanut, e tshimikaitshenanut, e mauashunanut, e pamipatananut ka nishtukatet, neshkitu (pipunitapan), ishkitu-utissa kie e papamutenanut. Mishta-mitshena anite kutikuniutshuapa, kusseutshuapa nete tshe



pimapekamuti uashtenimakan-apisha. Anitshenat etaht kakusseshiht kie anitshenat innuat mishta-apashtauat nenu assinu kie nenu tshekuannu eshi-takuannit anite assit.

Nete tshe atussenanut, anite tshe pimapekamuti uashtenimakan-apisha, takuana anite assia anite etaht atikuat, mushat, mashkuat, pishuat, kutakat aueshishat eka shuk<sup>u</sup> ka mishishtiht mak pineshishat. Nete ashit tshika tananu pessish shipit anite kuessenanut utshashumek<sup>u</sup> kuakuapishiu-kushkan e apashtakanit. Kussenanu anite ashit matamekuat.



Mishta-mitshena anite assia ka tshishpeuatakaniti tshetshi eka natau ishinakutakanit assi nete Akami-assissit kie Labrador. Nete Labrador, apu anite atussenanut anite tekuaki nenieshinakuaki assia. Nete minishtikut, Akami-assissit, nete tshe pimapekamuti uashtenimakan-apisha, apishish neni assia ka tshishpeuatakaniti kie ka nakatuapatakaniti katshitaikanua, eukuan neni assia, Main River Waterway , West Brook, T´Railway, Jack’s Pond, Hawke Hills mak Butter Pot.

Nalcor natu-tshissenitamupan nenu eshpish apashtakannit assinu kie nenu eshi-takuannit, tshetshi tshissenitak mekuat atussenanuti, tshetshi ma takuannit tshekuannu eka menupannit kie tshetshi upime anite itutenanunit. Nalcor natu-tshissenitamupan umenua tshekuana:

- Eshi-pushinanut (utapan, upashtamakan kie ma kutak)
- E nataunanut kie e ashtakaniti tishunakana
- E kussenanut

- E apashataht assinu innuat anutshish
- Kusseutshuapa
- E apatshiakaniht ka nishtukateti kie neshkituat (pipunitapana)
- Nete tekuaki kutikuniutshuapa
- E aitatussenanut tshetshi minuatakanit
- Assia ka tshishpeuatakaniti, ka kanuenitakaniti kie ka nakatuapatakaniti
- E tshimikaitshenanut
- E nuta-ashinenanut kie e natuapatakanit pimi ka takuak atamit assit nete atamipeku kie nete assit
- E assitshenanut

### **Maniteuat e ashuapamakaniht**

Mishta-apatana ka ashuapamakaniht maniteuat nete Akami-assissit mak Labrador. Mishta-pitutepanu shuniaue kie kanuenitakanu shuniaue nete Akami-assissit; anitshenat epiht eka upime etutau, kau nete shuniaue takuan assit. Mitshennu tshekuannu menuatahk anitshenat maniteuat, ne e aitananunit kie eshinakuak assit, minuatamuat tshetshi natshi-mupiht, e papamuteht, e kusseht, e pamishkaht ishkuteu-utissa kie neshtikua tshetshi pimipaniaht. Neme pipun 2010, mamu 13000 auenitshenat nete epiht Akami-assissit atussepanat nete ka ashuapamakaniti maniteua.



Mitshetuak auenitshenat etuteht nete Labrador eshakumipipuna tshetshi natshi-kusseht utshashumekua kie ma tshetshi shatshuapatahk nenu ka minuashiniti assia

miam ne ka uashat Red eshnikatet kie ma Battle Harbour. Neni e nishiki assia ka tshishpeuatakaniti, neme utshua Mealy mak neme kutak assi Eagle River Waterway, tshipa tshi mitshetuait maniteuat tshe shatshuapatahk nete Labrador.

Nete minishtikut, mitshen anite tshekuan tekuak tshetshi uapatakanit, neme assi ka tshishpeuatakanit Gros-Morne kie ne assi ka ishpenitakanit tanite mishta-ishpanipan tshekuan ne ka ishinikatet : Anse aux Meadows. Napiki an meshta-mishat atusseun tshetshi tutakanit, anite maniteuat eshuapamakaniht.

### **Tshe ishi-nukuak**

Kassinu tshekat nete tshe atussenanut, tshe pimapekamutakaniti uashtenimakan-apisha, katak<sup>u</sup> nete tshika takuan kie apu shuk<sup>u</sup> auen tshika ut uapatak eshinakuannit. Neme itamutakanitai uashtenimakan-apisha, mitshetuait ishinakuan ne assi tshe katshitaikanit, minashkuau, mushuau kie anite massekua kie ma shipua tekuaki mak utshua. Nete iapit tshika pimamua meshkanat, mishta-meshkanat, tshika tashkamipanaua tekuaki neni meshkanaua, nete passe innu-assia. Nete tshe takushipaniti neni ka mishapekaki uashtenimakan-apisha mak anite tshe tutakanit nanimissiu-ishkuteu, nete nashipemiti détroit de Belle Isle kie neme ka uashat Conception itetshe. Neme assi kiatshitaikanit, anite tshe pimapekamuti uashtenimakan-apisha, takuana anite shakaikana, shipu miam ne shipu Kenamu, shipiss Portland, shakaikan Birchy mak shipu Exploits. Neme utshu ka ishinikatakanit Long Range, iapit tepaikanu, itapekamua anite uashtenimakan-apisha. Anitshenat ka ituteht assit, ka pamishkaht mak ka minuatahk e pamuteht, minuatamuat meshta-minuashiniti assinu tshatapatakai, miam neni assia eka auen shuk<sup>u</sup> anite etat kie upime nete ka takuaki (mate, nete itetshe Sentier des Appalaches).

### **Ka kussenanut shipekut**

Mishta-apashtauat nenu ka kussenanut shipekut anitshenat uetshipaniht nete Akami-assissit mak Labrador, tanite mishituepanu atusseun, shuniatshenanu ekue minuait inniun kie aitun. Mitshetupipuna eshpish, kushkatakanipan ne ashatsheu, unushu, kashkanamek<sup>u</sup>, papatsheshat, makana mak kaushkanusht. Anutshish, kushkatakanuat ashit kaiapishapessishiht mak pemituteuat. Nete aishkat, anitshenat nameshat tshika mishta-kushtakanuat, tshika mishta-apatenimeuat nenua kakusseshiht, nishuait eshinakushiniti pemituteua mak ne eshinikatakanniti comcombre de mer du Nord.

Atshikuat ashit nipaikanuat nete mishkumit pepuniti.

Neme tshekuan tshe apashtakanit tshetshi kussenanut, tshissenitakuan patush tshekunamesh ua kushkatakanit. Pate, unaikana apashtakanua tshetshi katshitinakanit pemituteuat kie ashatshuat ek<sup>u</sup> anitshenat kaiapishapessishiht kueshkatakanitau, apatshiakanu anapi eshinikatakanit chalut. Kassinu tshekat nameshat kueshkatakanit nete atamipekut ka taht, anapi apatshiakanu kie ma kushkaniapia atamipekut akutitakanua. Unushutisha apashtakanua tshetshi kushkatakanit papatsheshat. Kuessenanuti, neni ishkuteu-uta apu anu tshinuati, nishtunneshit ashu patetat ishkuaua.

Neme tshe tashkamipannanut neme détroit de Belle Isle, takuan anite kuessenanut ashatsheu, papatsheshat, kashkanamek<sup>u</sup>, kaushkanusht kie makana. Anitshenat kakusseshiht, aitu anite uetshipaniht nenu tekuannit détroit de Belle Isle, kusseuat nete tshe pimapekamutakaniti ka mishapekaniti apisha atamipekut. Apu tapuetakanit tshetshi nitautshiakanit anite namesh anite tshe pimapekamutakaniti uashtenimakan-apisha kie muk<sup>u</sup> ne unushu kushkatakanu.

Nalcor apu kanuenitak aimunnu nenua innua eshi-kusseniti nete tshe atussenanut, tshe pimapekamuti uashtenimakan-apisha.

Anitshenat kakusseshiht nete ka taht Dowden's Point, kushkateuat namesha: kashkanamek<sup>u</sup>, kaushkanusht, makanu, ashatsheu mak ne namesh ka ishinikatakanit lompe. Minuatakanu e aitatussenanut, kuessenanuti ne unushu kie shipeku-matamek<sup>u</sup>.





## MISHITUEPANITAKANITI NANIMISSIU-ISHKUTEU, TAN TSHE AITUTAKANIT NE ASSI

Nalcor tshika tshimatau kie tshika nakatuapatam<sup>u</sup> nenu atusseunnu tshe tutak, tshe mishituepanitat nanimissiu-ishkutenu. Tshika uitshieu nenua ua apashtaniti ishkutenu kie nenua kutaka tshe petuteniti. Nalcor aieshkushtapan nenu tshe itatusset, ua mishituepanitat nanimissiu-ishkutenu, tshetshi nukuannit nenu ka minuanit muk<sup>u</sup> tshiam tshekuannu mak tshetshi nasht eka takuannit eka menuanit. Anitshenat ka tutahk mashinaikannu nenu ka natu-tshissenitakannit assinu eukuannu kie uinuau ishi-tshitapatamupanat, tan tshipa ishi-kushtikuannu tshetshi katshitaikannit assinu, tshekuannu tshipa tutakannu tshetshi nakatuapatakannit assinu. Mate, natu-tshissenitakanipan neme ua tutakanit atusseun, tshetshi nishtutakanit tan tshe ishi-katshitaikanit neme ka kussenanut, eshi-nitautshiki nipisha, uapikuna, aueshishat mak tshetshi tshissenitakaniti tshetshi ma minekash katshitaikaniti. Nalcor tshika utinam<sup>u</sup> nenu menuanit tshekuannu tekuannit tshetshi tutak nenu atusseunnu mak tshetshi mishituepanitat nanimissiu-ishkutenu mak kanapua minu-nakatuapatakanit assi, tshetshi eka natau ishinakuak.

Miam nenu ka itashuemakan Nalcor nete takuaikanit, nemenu ka natu-tshissenitakannit assinu tshipa aitutakannu mak neme ka kushtakanit kie ka kukuetshimitishunanut neme auenitshenat ka natakaniht, ne ma natu-tshissenitakaniti assi tan tshe aitutakanit tshitapakanipan neme tshipa ishi-katshitaikannu assi, anite epinanut tutakaniti ne atusseun, mishituepanitakaniti nanimissiu-ishkuteu. Eukuan uet neni tshekuana mishta-minu-natu-tshissenitakaniti.

### **Tshishik<sup>u</sup>**

Neme tshekuan tshe matenitakuak mekuat atussenanuti anite tshishikut eukuani neni mishta-utapana tshe unuiapatenahk eka ka minuanit tshekuannu mak kanapua e upipanit nekau katshi pimipataniti utapana kie e nutik nete tshe atussenanut. Anitshenat tshe atusseht, atusseutshuapa kie ka kupanieshuht, tshika ui minu-naikamuat nenu utapanuaua tshetshi eka shuk<sup>u</sup> mishta-uinakutaht. Neme atuseun tshi tshishtakaniti, shash tshi pimapekamutakanitau uashtenimakan-apisha, apu shuk<sup>u</sup> tshika ut mishta-katshitaikanit ne tshishik<sup>u</sup>, tshetshi eka menuat tshekuan piputepitakanit. Neni muk<sup>u</sup> utapana tshe ishpataniti anite tshetshi nakatuapatakanit kie ma ueueshtakaniti tshekuan ka pikupanit tshe takuaki nete assit.

Neme mekuat atussenanuti, itapekamutakanitau uashtenimakan-apisha tshetshi mishituepanitakanit nanimissiu-ishkuteu, apu tshika ut mishta-tshikauapaniti neni mishta-utapana, nete muk<sup>u</sup> pessish tshe atussenanut tshe petakuaki, pessish meshkanat. Tshika petakanua neni put pimipanikau utapana, mishta-utapana kie pakuneikaniti assi muk<sup>u</sup> neni utapana eka ka tshikauapaniti tshika kanuenitamuat. Kashikati an tshe mishta-atussenanut. Neme pimipaniti nanimissiu-ishkuteu nete uashtenimakan-apishit, tshika petakuan tshekuan pitute apishit tanite tshishik<sup>u</sup> tshika katshitaikanu. Ka mamatuepanishua ishitakuan ne nanimissiu-ishkuteu. Tshika nakatuapakanu tshetshi eka mishta-tshikauet, miam nakana ka ishi-tapuetakanit tshe ishpish tshikauapaniti neni apisha.

### **Assi**

Tshetshi eka animunanut anite atussenanuti, tshika mannaikannu kassinu tshekuan, nipisha, mashkushua, shikaua kie mishtikuat tshe tshimashuht uanasse tshika tshi mishkut atussenanu miam neni uashtenimakan-apisha tshikamutakanikau kie neni mitshuapa tshe mishkutunakanit nanimissiu-ishkuteu tshimatakanitau, mitshuapa tshe apiht kaiatusseshiht, nete tshe ashtuashunanut uenapissish mak neni meshkanaua tshe itamutakaniti. Anitshenat mishtikuat tshe tshimikauakaniht tshika minunakanuat tshetshi apatshiakaniht. Nete tshe mushuat, eka tshe takuak tshekuan nete pessish shipit, tshika nakatuapakanua neni assia. Tshika tipaikanu neme tshe ishpish



apashtakanit assi, tshetshi tshimatakaniti neni uashtenimakan-apisha kie tshetshi atusseunanut anite nasht eka kushtikuak.

Menupaniti tshetshi tutakanit, nete shipua, shakaikana kie pakussipekua tekuaki kie neni nipisha mak uapikuna, ka mashinataikaniti tshika ui upime anite atussenanu. Eshk<sup>u</sup> eka tshitshipannanut neme tshe itatussenanut, Nalcor tshika natu-tshissenitam<sup>u</sup> tanite tekuaniti uapikuna kie nipisha ka mashinataikaniti, eka matsheniti, minupaniti tshetshi tutak, upime anite tshika atussenanu. Nete tshe atussenanut, tshe ashtuashunanut uenapissish miam tshimatakaniti tshekuan, tshi tshishi-atussenanuti, kau ne tshika nitautshitakanua nipisha, uapikuna, tshika tshimanakanuat mishtikuat nete tshe mushuat assi.

Neme eshi-natautshik tshekuan, nipisha, shikaua, mishtikua nete tshe tshimateti uashtenimakan-mishtikua, tshika ui nakatuapatakanu tshetshi eka katshitaikaniti neni uashtenimakan-apisha mak tshetshi eka ashtuepaniti uashtenimakana.

Neni nipisha, uapikuna ka tshinuashkuaki anu kutuasht-tatushit min patetat ashu kutuasht, tshika nakatuapatakanua kie tshika tshimishakanua ashit ne ka tshimiputatshepanit kie ma matshinatukun tshika apashtakanu. Neme matshinatukun nakatuapatakanu, takuaikan-mashinaikan takuan tshetshi eka shuk<sup>u</sup> mishta-apashtakanit. Ne assi pessish ka takuak anite nipit, miam neni shipua, shakaikana, apu tshika ut ui nutshitakanit. Apu kushtikuannit anitshenat aueshishat nenu matshinatukunnu, mishta-apishish apashtakanu.



Nalcor tshika uitshieu nenua aueshisha ka nakatuapamakanniti nete Akami-assissi-tshishe-utshimat tshetshi eka shuk<sup>u</sup> mishta-pikunikannit anite etaht minashkuau-atikuat. Neme atussenanuti, itapekamutakanitau uashtenimakan-apisha, apu tshika ut mishta-katshitauakanit ne minashkuau-atik<sup>u</sup>, apu nita shuk<sup>u</sup> tat ne aueshish nete ka tatuetakannit etaniti innua. Muk<sup>u</sup> ma uin, tshi tshishtakaniti ne etussenanut, neni uashtenimakan-apisha tshi itapekamutakanitau, kanataushiht kie anitshenat

aueshishat tshika tshi uanasse natauat, atikua nete etaniti pessish tshemashuniti uashtenimakan-mishtikua. Mishta-mamitunenimiueuat anitshenat atikuat nete Labrador, tshitaimananu tshetshi nipaikaniht, takuaikan tutakanipan tshetshi eka nipaikaniht. Tshetshi eka shuk<sup>u</sup> mishta-katshitaauakaniht atikuat, menupaniti tshetshi apashtat nenua meshkanaua shash ka takuanniti kie shash ka itutenanunit, eukuannua tshe apashtat Nalcor (mate nete Labrador etamut mishta-meshkanau). Tshika tshipaikanua neni meshkanaua eka tshe apashtakaniti tshishi-atussenanuti. Tshika nitaushina anite kau nipisha, uapikuna.

Tshika pikunikanu kie ma tshika mishkutunakanu anite passe aueshishat ka taht neme tshimishakaniti nenu eshi-nitaushinnit anite assit neme tutakaniti atusseun, mishituepanitakaniti nanimissiu-ishkuteu. Tshipa put tshi natau tutakuat anitshenat etatu ka apishissishiht aueshishat miam anitshenat uapishtanat ka taht Akami-assissit, tshipa tshi ui nipaiku kutaka aueshisha. Menupaniti, tshika ui akua tutam<sup>u</sup> Nalcor tshetshi eka pikunamuat anite etaniti. Nete etaht uapishtanat, Nalcor tshika aimieu nenua ka atusseshtuakaniti aueshisha tshetshi tshissenitak tanite tshipa tshimatenua nenu uashtenimakan-minishtikua nenu mishituepanitati nanimissiu-ishkutenu. Nemeni mishtikussa kie shikaua ka asheshtakaniti anite itetshe tshe pimapekamuti uashtenimakan-mishtikua, ekute tshe ut tshi akauashkushimuat aueshishat.

Tshetshi eka shuk<sup>u</sup> mishta-pikunakannit anite etaht pineshishat kie ma shishipat, tshimishakaniti uapikuna, shikaua kie ma mishtikua, tshika ui upime itutenanu anite etaht anitshenat pineshishat, shishipat tshetshi eka mishta-mamashiakaniht nemenu itapekamutakanitau uashtenimakan-apisha. Pipuki tshika tauashkaitshenanu, shash tshiuapanitau shishipat nete ka tshishitenit assit. Apu tshika ut tapuetakanit tshetshi atussenanut anite kutuasht-tatunnueshit ashu patetat ashu kutuasht min nish<sup>u</sup> ante tekuaki mitshishu-utshishtuna kie ma akushamesheuat. Apu tshika ut tshi atussenanut nete pessish nipi tekuak, nete nashipetimit shipissit, shipit kie nete shakaikana kie minupaniti apu tshika ut ui itutenanut nete tekuak nipi anite atamit ashinit.

Miam neme atussenanuti, apu tshika ut katshitaikanit ne eshi-nitaushik tshekuan kie aueshishat, neme tshe katshitaikanit tshika takuan nete itetshe tshe itapekamuti uashtenimakan-apisha.



Anite tshe katshitaikanit ne eshi-nitautshik anite tshekuan kie anitshenat aueshishat neme miam atussenanuti, itapekamutakanitau uashtenimakan-apisha kie patush natshi-ueueshtakaniti anite tshekuan, auen anite ituteti tshipa tshi mamashitakanu. Apu tshipa mishta-katshitaikanu.

### **Nipi tekuak, shipua kie shakaikana**

Nalcor tshika natuenimeu kanua tshetshi tashkamipannanut nipi tekuak, pakuat tshetshi pimutenanut, tshetshi tutakaniti ashukana kie ma tshikamutakaniti epishashiti ashukana. Apu tshika ut mishta-mishat anite atusseun tshe tutakanit kie nemeni atusseuakana tshe apashtakaniti, tshika uashkamaua, apu tshika ut utshikauti. Tshika natu-tshissenitakanu ne eshi-amatauatshipanit assit mak tshika takuana assia tshe utinakaniti anite tshe atussenanut. Neme pimapekamutakanitau uashtenimakan-apisha kie neni meshkanaua anite tshe itamuti shipit kie ma anite nipi tekuak, kassinu ne assi ka takuak nete nipit uipat tshika minuakamu nipi, apu tshika ut natau ishpanit nipi kie anitshenat nameshat. Tshika nakatuapatakanu tshetshi eka pakashtuepanit tshekuan nete nipit, tshek ma utshikauti kie ma pakashtuepaniti.

Shash nemeni uashtenimakan-apisha pimapekamutau, tshika shutshishtakanua ashit matshi-natukun neni nipisha, uapikuna tekuaki nete uashtenimakan-mishtikua. Anitshenat ka nishtuapatahk nenua matshi-natukuna, uinuau tshika aitutamuat kie tshika nashatamuat nenu eshi-takuaimatakannit. Apu tshika ut apashtakanit ne matshi-natukun nete pessish tekuak nipi, shipua kie ma shakaikana kie apu tshika ut katshitaikanit ne nipi.



Neme tshe ishinakutakanit assit anite tshe pimapekamuti uashtenimakan-apisha kie neni meshkanaua tshe takuaki, apu tshika ut animiuht auenitshenat tshetshi ituteht nete nipinu tekuannit mak shipua. Minupaniti nete tshetshi itutenanut nete nipi tekuak, tshipa tshi ishinakuan tshetshi mitshetunanut e kussenanut, anitshenat nameshat tshe kushkatakaniht miam matamek<sup>u</sup> kie utshashumek<sup>u</sup>. Tshetshi eka shuk<sup>u</sup> itutenanunit, Nalcor tshika apashtau nenua meshkanaua shash ka takuaniti. Neni meshkanaua eka tshe apashtakaniti tshishi-atussenanuti tshika tshipaikanua. Tshika nitaushina anite kau nipisha, uapikuna.

### **Shipek<sup>u</sup>**

Neni ka mishapekaki apisha tshe tashkamipaniti nete détroit de Belle Isle mak ne mitshuap tshe tshimatakanit anite tshe mishkutinakanit nanimissiu-ishkuteu nete shipekut tshika tutakanua.

Nemeni ka mishapekaki uashtenimakan-apisha tshe tashkamipaniti amapekut nipit mak ne mitshuap anite tshe mishkutinakanit nanimissiu-ishkuteu tutakaniti tshipa tshi ishpanu tshetshi eka minuakamit shiuapui anite pessish tshe atussenanut. Apashtakaniti nete ka pakuneikanit tshetshi itapekamutakaniti ka mishapekaki uashtenimakan-apisha mak tshetshi itutakaniti nete détroit de Belle Isle, apu tshika ut mamashitakanit kie pikunikanit neme eshinakuak nashipetimit kie nipit. Tshipa tshi ishinakuan tshetshi eka taht anite atussenanuti anitshenat nameshat, ka mamishishtiht nameshat, missinakuat ka taht shipekut kie shishipat mak pineshishat, tshipa tshi tshitamutshenauat pakuneitshenanut, atussenanuti nipit kie mamashitakanniti nenu eshi-nitaushinit nipit. Nemeni ashinia tshe ashtakaniti nete amait nipit tshetshi akunaikaniti ka mishapekaki uashtenimakan-apisha, tshika mishta-nakatuapatakanua tshe ishi-minushtakaniti, ka tshinuapekak e pakunetakat mishtik<sup>u</sup> tshika apashtakanu. Ashtakanikau neni ashinia tshe apashtakaniti tshetshi ashtakaniti anite ka mishkutinakanit nanimissiu-ishkuteu, tshika apashtakanu ne ka pakuneitshapanit nete ut nashipetimit tshetshi eka mishta-mamashitakanit anite eshtakaniti. Ne tshe aitutakanit atussenanuti, tshika atshupanu ne eshpish mamashitakanit amait nipi ka takuak kie anitshenat aueshishat kie nameshat etaht.

Neme shash pimipaniti nanimissiu-ishkuteu, neni ka mishapekaki apisha kie ne tshe mishkutinakanit anite nanimissiu-ishkuteu, tshika atussemakana apishish,

ishkuteu anite tshipa tshi takuan. Nemeni ashinia ashtakanitau tshetshi akunaikaniti ka mishapekaki uashtenimakan-apisha mak nete kutak tshe akunaikanit anite mashkutinakanit nanimissiu-ishkuteu, eukuannu tshe nakanakuht nameshat kie aueshishat etaht nipit, tshetshi eka pesssish taht ka mishapekaki uashtenimakan-apisha kie nanimissiu-ishkutenu tekuannit. Apu tshika ut mishta-matenitakuak ne nanimissiu-ishkuteu nete tshe takuaki ashinia kie mishta-apishish tshika katshitaikanu.



Neme atussenanutj, Nalcor tshika natu-tshissenitam<sup>u</sup> tan eshpishanit nanimissiu-ishkutenu uenuipannit anite ka mishapekaniti uashtenimakan-apishit kie nete tshe mishkutinakanit nanimissiu-ishkuteu. Neme tshe ishi-mishkakanit tshekuan, tshika apashtakanu tshetshi tshiuenakanit aimun neme kukuetshimunanuti ne eshinakuak atamipekut, nete shipekut.



## TAN TSHE AITUTAKUHT ATUSSENANUTI, MISHITUEPANITAKANNITI NANIMISSIU-ISHKUTENU ANITSHENAT NUTIM ESHINNIUHT AUENITSHENAT

### **Ka natuapatitshenanut tshiashi-tipatshimun kie eshi-kanuenitashunanut**

Apu tshika ui atusset Nalcor nete assinu ka nishtuapatakannit, anite ka mishta-ishpanit tipatshimun kie eshi-kanuenitashunanut. Eshk<sup>u</sup> eka tshitshipannanut e atussenanut, Nalcor tshika natu-tshissenitamu tanite tekuanniti assia ka nishtuapatakanniti, anite ka mishanit tipatshimunn<sup>u</sup> kie ka minuanit eshi-kanuenitashunanunit. Kassinu



ne tshekuan tutakaniti kie nakatuapakaniti neme atusseun tshe takuak, nete shash ka atussennanut tshika ishpanu ne tshekuan. Nete tekuaki neni assi ka ishpiteitakuaki tshetshi kanuenitakaniti kanapue mishau anite tipatshimun kie eshi-kanuenitashunanut, apu anu uitakanit tshetshi kutak tshekuan anite pikunikanit miam Nalcor nakatuapataki nenu atusseunnu kie ueueshtakanitau neni uashtenimakan-mishtikua kie uashtenimakan-apisha tshi tshishtakaniti.

Atut tshipa mishta-katshitaikanua neni assia ka ishpiteitakuaki anite ka mishta-mishat tipatshimun tekuak anite kie ne tshekuan ka ishi-kanutenitakanit, akua tutakaniti tshetshi eka itutenanut anite kie tshissenitakanitau tanite tekuaki neni assia neme atussenanut, mishituepanitakaniti nanimissiu-ishkuteu.



### **Anite tekuaki utenaua, utenassa, innu-assia**

Kassinu anitshenat kupanieshat tshe natshi-atusseht nete tshimatakaniti neme tshekuan, tshika takuana mitshuapa anite tshe nipaht kupanieshat. Apu auen tshika ut natuenitak tshetshi natshi-apit utenat, utenassit kie innu-assit. Apu tshekuan natuenitakanit tshetshi tshimatet kie ne eshi-patshitinakanit miam nete tshe tshishkutamatunanut, metueutshuap kie anite tshe natukuiakanit auen ka animut. Nete tshe apiht kupanieshat, tshika tauat anite auenitshenat tshe natukuiiht auennua, ka ashtuaitsheshiht kie kamakunueshiht. Apu tshika ut mishta-mishat mishkut ne etusseshtakanit anite netukuiakaniht auenitshenat, ishkuateti tshe ashtuaitshenanut mak kamakunueshiht tshe nakatuapiht, patush mishta-aishpaniti tshekuan tshe apashtakanit ne tekuak nete utenat.

Apu tshika ut mishta-natshishkatuht anitshenat kupanieshat tshe atusseht kie anitshenat epiht nete utenat, utenassit mak innu-assit, tanite tshika mishta-mishanu utatusseunnuau kupanieshat kie apu natamik<sup>u</sup> auen tshika ut tshi pitutshet nete tshe apiniti kaiatusseshiniti. Nalcor natu-tshissenitamupan tshekuannu tshe ishpannit nenu atusseunnu tutakanniti, mishituepanitakanniti nanimissiu-ishkutenu, tshetshi katshitaikanit ne ka utatshimakanit auen, ka uepinashunanut, kamakunueshiu-atusseun, eshi-naikakanit anite etananut, mak tshetshi minuenimunanut anite etananut. Apu tshika ut mishta-katshitaukuht tshekuannu anitshenat utenat ka taht kie anite utenassit kie ma innu-assit.

Mishituepanitakaniti nanimissiu-ishkuteu, apu tshika ut mishta-matenitakuak neme atussenanuti nete utenat, utenassit kie nete innu-assit.

### **Tshe mishituepanitakanit atusseun kie tshe shuniatshenanut**

Ne tshe ishpish meshtinakanit shuniau neme atussenanuti, mishituepanitakaniti nanimissiu-ishkuteu, neupipuna tshika ishpish tutakanu ne atusseun, neme nishupipuna tshi atussenanuti patush tshe mishta-atauenanut. Tshika mishta-shuniatshepannu mak tshika mishau atusseun. Kassinu anite Akami-assiss kie Labrador tshika matenitakuan kie nete ait assit iapit, Kanata.

Neme pimipanitakaniti kie nakatuapatakaniti atusseun tshe tutakanit, nanimissiu-ishkuteu mishituepanitakaniti, tshika mishta-pitutepanu shuniau nete utenaua tekuaki kie anitshenat kenuenitak atusseutshuapa mak ne atusseun tshe ishpish takuak. Apu tshika ut mishta-matenitakuak neme mekuat atussenanuti muk<sup>u</sup> tshe ishpish atussenanut, nanitam, tshika takuan neme tshishtapanitakaniti etussenanut. Minuat peikuau, ne tshika matenitakanu nete nutim eshpishat Akami-assiss kie Labrador mak nete ait assit, Kanata.



Tshika minuau ne atusseun takuaki, tshika mishituepanu atusseun kie shuniau tshika pitutepanu. Apu tshika ut mishta-mishat ne tshekuan eka tshe minupanit, takuaki tshika mishta-apishashu.

### **Tshe itapashtakanit assi kie ne tshekuan natautshik kie tekuak anite assit**

Mishta-mitshetuut auenitshenat etuteht nete minashkuat, iapashtaht assinu miam anitshenat innuat kie anitshenat kutakat ka ituteht, ka atauatsheht tshekuannu uetshipannit assit kie ma ka natuapatahk tshetshi mitshishuht. Neme atussenanuti, mishituepanitakaniti nanimissiu-ishkuteu mak nakatuapatakaniti ne atusseun kie ma ueueshtakaniti pikupaniti tshekuan, tshipa put ishinakuan tshetshi unitaht assinu anitshenat passe ka ituteht nete minashkuat nete aishkat. Nalcor tshika ui atusseshtam<sup>u</sup> tshetshi eka ishinakuannit nenu, miam mate tshipa tshi eka ituteu

---

## TAN TSHE AITUTAKUHT ATUSSENANUTI, MISHITUEPANITAKANNITI NANIMISSIU-ISHKUTENU ANITSHENAT NUTIM ESHINNIUHT AUENITSHENAT

nete minashkuat kie kanapua ashit patshitinaki aimunnu, uitaki tanite tshe tat. Neme tshe ishkuat anite tshe tshimateti uashtenimakan-mishtikua, tshika ishpish anakashkau nanitau peikumitashumitannueshit ashu peikushteu-tatunnu ashu kutuasht min nishuaush-tatunnu ashu kutuasht. Tshika takuan anite assi nete tshe ituteht auenitshanat nakana ka ituteht assit, ka taht minashkuat, nete assit apu auen tshika ut atusset kie apu tshika ut tat.

Neme atusseun tutakaniti, mishituepanitakaniti nanimissiu-ishkuteu, apu tshika ui kutaka meshkanaua tutakaniti tshetshi itutenanut nete assit mak neni shash tekuaki meshkanaua tshika apashtakanua. Nete assit itetshe uinipekut mamit anite Labrador, neme atusseun tutakaniti tshika takuan anite tshe minupanit tshetshi itutenanut minashkuat, tshika tauat passe tshe minuenitahk ishinakaniti.

Neme attussenanuti, nanimissiu-ishkuteu mishituepanitakaniti, apu tshika ut mamashiakanit anitshenat ua apashtaht assinu, ui apashtataui nenu assinu, tshipa tshi eshk<sup>u</sup> ituteuat.

### **Maniteuat ka ashuapamakanit**

Passe neme tshekuan tshe tutakanit tshimatakaniti ne atusseun, mishituepanitakaniti nanimissiu-ishkuteu, tshipa tshi takaikanu neme maniteuat ka ashuapamakanit. Tshetshi eka mishta-katshitaikanit ne, anitshenat tshe atusseht nete tshimatakaniti neme tshekuan, tshika apuat nete mitshuapa tshe tshimatakanniti nete pessish tshe atusseht, apu tshika ut ituteht nete kanipananuti mitshuapa. Apu mishkut mitshet katshipaikanisha utinakaniti maniteuat ashuapamakanitau. Minupaniti tshetshi tutakanit, Nalcor tshika kutshipanitau tshetshi eka tananut nete mitshetunanuti, maniteuat takushinitau mak tshetshi eka apashtakaniti meshkanaua. Nalcor tshika aimieu nenua ka tipenitaminiti, nenua ka ashuapamakaniti maniteua tshetshi mishkakanit tan tshipa tutakanu tshetshi eka mamashitakanit ne atusseun, ka takushiniht maniteuat ka mupiht.



Neme atusseun tutakaniti, mishituepanitakaniti nanimissiu-ishkuteu mak pimipanitakaniti, nakatuapatakaniti kie ueueshtakaniti, tshipa tshi put ishinakuan tshetshi katshitaikanit ne ka ashuapamakaniht maniteuat ka mupiht. Nemenu assinu tshe ishinakutakannit, eukuannu tanite menunahk e tshitapatahk anitshenat maniteuat niatshi-mupitau nete assit. Neme tutakaniti kie aieshkushtakaniti ne atusseun ua tutakanit, Nalcor upime nete ui atussepan, apu ui katshitaik nenu assinu ka minuashinit, ka nishtuapatahk anitshenat maniteuat.

Neme nutim eshpishat ne atusseun e tshitapatakani tshe tutakanit, tshika ui nakatuapatakanu tshetshi eka mishta-mamashitakanit nete ka ashuapamakaniht maniteuat niatshi-mupiht.

### **Ka minunakuak assi tshatapatakaniti**

Ka minunakuak assi tshatapatakaniti eukuannu nenu etamatshiut auen tshatapataki tshekuannu menuashinit. Ne tshekuan menunakanit tshatapatakaniti, apu nenu auen tapishkut minunak tshekuannu, muk<sup>u</sup> uin nenu uetshit etenitak ne ka tshitapatak. Neme atussenanuti, tshitshipanannuti e mishituepanitakanit nanimissiu-ishkuteu, Nalcor tshissenitam<sup>u</sup> tanite nenu assia tekuanniti ka minunakanniti, mate, tshipa ui upime nenu tekuannit assinu ka tshishpeuatakannit Gros Morne ituteu. Nalcor tshika apashtau nenu assia shash ka tananunit miam neme mishta-meshkanau etamut nete Labrador e tutakanit. Tutaki nenu apu kutakanu assinu katshitaik kie pikunak ka minunakuannit. Neme eshpishat atusseun tutakaniti, nete eka nita ka uapatakanit assi tshika tutakanu, apu mishkut tshika ut mamashitakanit ne menunakanit assi.

Neme mushuashkaitshenanuti kie tshimashkushuenanuti nete tshe tshimateti uashtenimakan-mishtikua mak kutak tshekuan tshe ui tshimatakanit tutakaniti atusseun, mishituepanitakaniti nanimissiu-ishkuteu, tshika mishkutshipanu ne assi tshe ishinakuak. Ne tshe ishi-mishkutshipanit assi, patush anite uiesh auen ut tshitapataki tshe uapatak nenu ait eshinakuannit. Anitshenat mishtikuat, utshua kie kutak tshekuan tekuak assit, eukan neni tshe ut tshi eka mishta-tshikanakuak ne atusseun tshe takuak. Tshika tshikanakuana neni uashtenimakan-mishtikua mak ne mitshuap anite tshe mishkutinakanit nanimissiu-ishkuteu, nanitam tshika nukuana tshe ishpish takuak ne atusseun.



---

## TAN TSHE AITUTAKUHT ATUSSENANUTI, MISHITUEPANITAKANNITI NANIMISSIU-ISHKUTENU ANITSHENAT NUTIM ESHINNIUHT AUENITSHENAT

Neme tshe ishinakuak assi atussenanuti, apu tshika ut mishta-katshitaikanit. Apu tshika ut mishta-mitshetiht auenitshenat tshe uapatahk nete tshe atussenanunit, mishituepanitakaniti nanimissiu-ishkuteu. Nete anu tshe tshikanakuak, Nalcor tshika aimieu nenua atusseutshuapa kiatshitaukuniti nenu atuseunnu, aieshkushtati nenu tshe itatussenanunit, tshetshi uauitahk tan tshipa tutamuat tshetshi eka shuk<sup>u</sup> mishta-katshikannit nenu assinu, tshetshi eka matshinakutakannit.



### **Ka kussenanut shipekut**

Neme atussenanuti, apishish tshika katshitaukanuat anitshenat ka kusseht nete détroit de Belle Isle, nenu mishituepanitakanniti nanimissiu-ishkutenu. Tshika tshipaikanu anite tshe atussenanut tshetshi eka kushtikuak, apu tshika ut mishtamishat ne tshe tshitaimatshenanut, kutuasht-tatupishimua tshipa ishpish tshipaikanu. Nalcor tshika kukuetchimeu nenu kakusseshiniti nete kuesseniti détroit de Belle Isle mak anite ashit muk<sup>u</sup> eshinakuannit, tshetshi mishkak tan tshipa ishi-uitshiakanuat anitshenat ka kusseht eka minupanniti utatusseunnuau.

Ne tshe ishpish katshitaikanit ne ka kussenanut nete shipekut, apu tshika ut mishtamishat.





## TSHE NAKATUAPATAKANIT KIE TSHE NASHATAKANIT ATUSSEUN

Neme aieshkushtakaniti atusseun, tshe mishituepanitakanit nanimissiu-ishkuteu, takuan ashit tshetshi shash aieshkushtakanit tan tshe ishi-tshishpeuatakanit ne assi eshinakuak, neni ashit assia, utenaua, utenassa kie innu-assia tekuaki mak anitshenat auenitshenat tshe apashtaht assinu. Nalcor tshika nakatuapatam<sup>u</sup> kie tshika nashatam<sup>u</sup> nenu ka aieshkushtat tshe aitatusset, tshetshi mishta-minupannit atusseunnu. Nalcor mishta-mitshet utinam<sup>u</sup> aimunnu tshetshi minu-nakatuapatak assinu. Nalcor tshika uitshi-atussemeu nenua mitshet atusseutshuapa ka takuaniti nete tshishe-utshimat tshetshi nakatuapatak nenu atusseunnu tutakanniti, mishituepanitakanniti nanimissiu-ishkutenu, tshetshi kassinu tshekuannu ishpitenitakannit nenu ka ui nashatak.

Neme tshe natu-tshissenitakanit assi tan tshe aitutakanit, uitakanu anite ne tshipa ishi-katshitaikanu atusseun tutakaniti. Nemenu tshe ishi-nashatak ne Nalcor tshika tshi tshissenitam<sup>u</sup> tan eshi-katshitaikannit assinu nenu tutakanniti atusseunnu, mishituepanitakaniti nanimissiu-ishkuteu mak tshika uitshiku nenu tshetshi tshissenitak tan uin ka itenitak tshetshi ishinakuannit nete ushkat ka natu-tshissenitak. Neme tshe ishi-nakatuapatakanit ne assi, ka nashatak ne Nalcor, tshika ueeshi-tshitapatakannu tshetshi nasht uemut minupanikue. Eka ishinakuaki ne, Nalcor tshika ueuetinam<sup>u</sup> tshetshi ueeshtat nenu eka menupannit.

Neme tshe ishinakuak ne atusseun ua tutakanit, Nalcor nenu tshika tutam<sup>u</sup>, tshika natshi-kukueshimeu nenua atusseutshupa tekuanniti nete tshishe-utshimat mak kutaka atusseutshuapa iapit tshika nateu. Neme tshe ishi-natashtakanit ne tshipa itatussenanu, tshika tshishtapanitakanu eshk<sup>u</sup> eka tshitshipannanut etussenanut, ne ua mishituepanitakanit nanimissiu-ishkuteu.

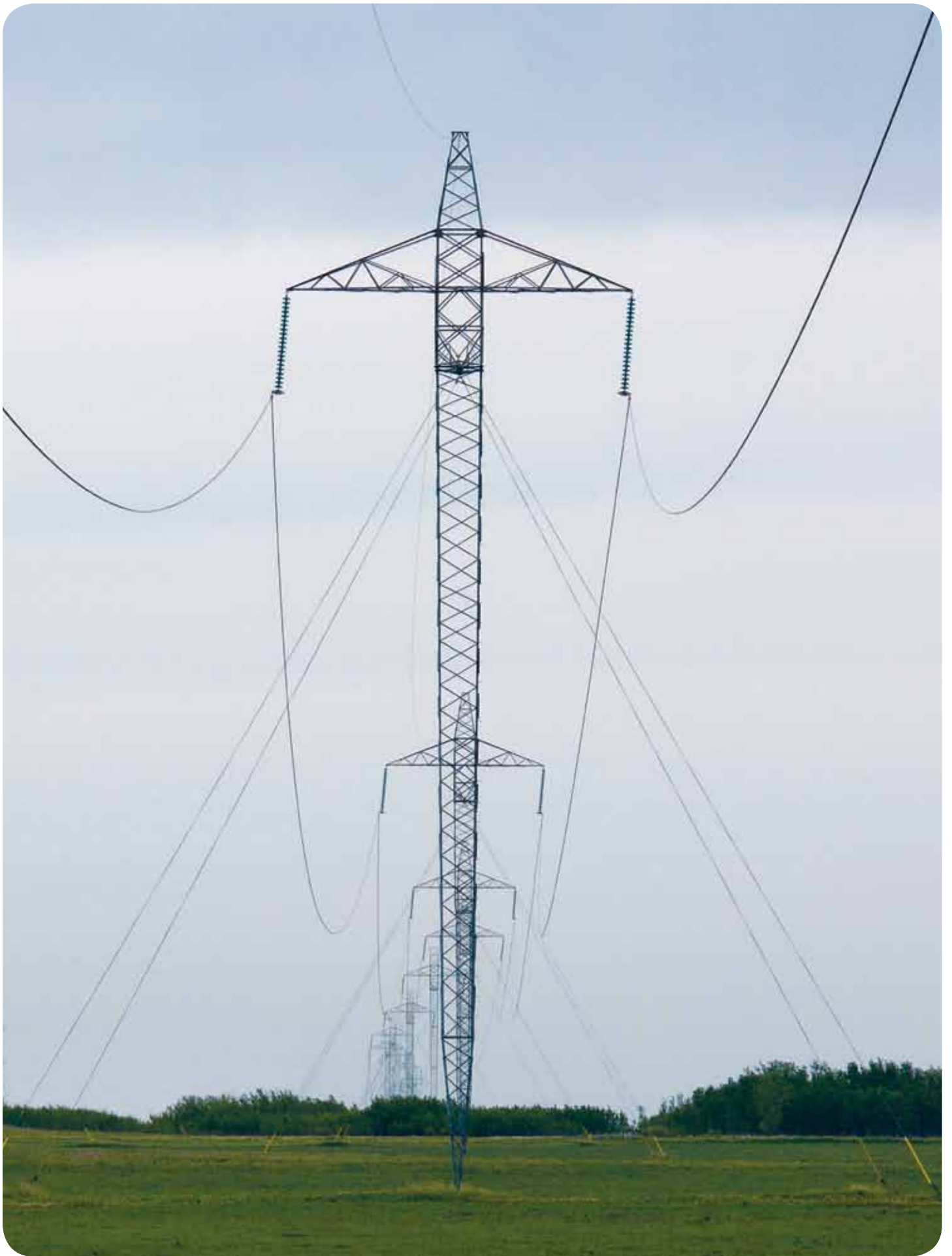


## E PUNANUT MASHTEN AIMUN

Nenu Nalcor ua tutak atusseunnu, ua mishituepanitakanit nanimissiu-ishkuteu, natashtau tshetshi patshitinak tshekuannu menuanit, e shutshenitakuannit kie uiashkamanit nanimissiu-ishkutenu. Ne atusseun tutakaniti, mitshet auenitshenat tshika uitshikuat anutshish kie nete aishkat, tshetshi uashtenapiht mak kanapua neni atusseutshuapa tekuaki nete minishtikut, Akami-assissit. Tshishtakaniti ne atusseun e tutakanit, tshika uitshiueu tanite mishta-natuenitakanu nanimissiu-ishkuteu kie ne tshe takuak, tshika uashkamau kie tshika shutshenitakuan. Ne atusseun takuaki, apu shuk<sup>u</sup> mishkut kutak tshekuan apashtakanit tshetshi uashtenapatshenanut nete minishtikut. Ne atusseun tutakaniti, ekute tshe tutakanit nanimissiu-ishkuteu eka shuk<sup>u</sup> tshe mishta-animak kie eka nanitam tshe mishkutshipanit etatshitakanit nete Akami-assissit. Tshika uitshiaushinanu ashit tshetshi mishituepanitakanit ne atusseun kie tshetshi shuniatshenanut atussenanuti, tshe etatu amatshuepannit eshpitenitakushit ne Akami-assiss kie Labrador.

Nalcor natshi-aimiepan innua, atusseutshuapa ka tutaminiti takuaikana mak nenua ka takaukuniti kutaka auennua tshetshi minakanit kie natutak eshi-kukuetchimunanunit mak nenu eshi-mamitunenimikuniti tshekuannu tutakanniti atusseunnu. Nalcor apashtapan nenu aimunnu manakanit kie eshk<sup>u</sup> nenu tshika apashtau tshetshi aieshkushtat nenu tutakaki atusseunnu mak tshetshi natu-tshissenitakannit assinu tshe aitutakannit. Nalcor tshika mineu mitshet auennua tshetshi taniti nete natu-tshissenitakaniti atusseunnu kie natshi-kukuetchimakanitau auenitshenat.

Nalcor mitshetuau natu-tshissenitam<sup>u</sup> assinu tshe aitutakannit mak tutamupan mashinaikannu anite meshinataikannit tan tshe aishinakutakannit assinu atussenanuti tshetshi nenu aieshkushtat tan tshipa ishi-pimipanitau nenu atusseshtaki atusseunnu, ua mishituepanitat nanimissiu-ishkutenu. Nalcor tshika tutam<sup>u</sup> kie tshika tshimatau nenu atusseunnu, tshika uitshiku nenua atusseutshuapa ka tutaminiti takuaikana mak nenua kutaka tshe katshitauakaniti, tshika ui nakatuapatam<sup>u</sup> tshetshi eka mishta-katshitaik assinu kie nenua auennua etaniti assit kie eshinniuniti. Anu neme tshekuan tshe minupanit muk<sup>u</sup> tshiam tshika ui tshikanakutakanu. Nenu tshekuannu tshe natashtat tshetshi ui ueuetinak eka tshe minupannit ne Nalcor, apu tshika ut mishta-mishat ne tshekuan eka menuat atussenanuti, mishituepanitakaniti nanimissiu-ishkuteu.









## **Nalcor Energy**

Hydro Place, 500 Columbus Drive

P.O. Box 12800, St. John's, NL

Canada A1B 0C9

T. 709.737.1833 or 1.888.576.5454

F. 709.737.1985

[nalcorenergy.com/lowerchurchillproject](http://nalcorenergy.com/lowerchurchillproject)

[twitter.com/NalcorEnergy](https://twitter.com/NalcorEnergy)

[facebook.com/NalcorEnergy](https://facebook.com/NalcorEnergy)

[youtube.com/nalcorenergy](https://youtube.com/nalcorenergy)

[nalcorleadershipblog.com](http://nalcorleadershipblog.com); [nalcorblog.com](http://nalcorblog.com)

