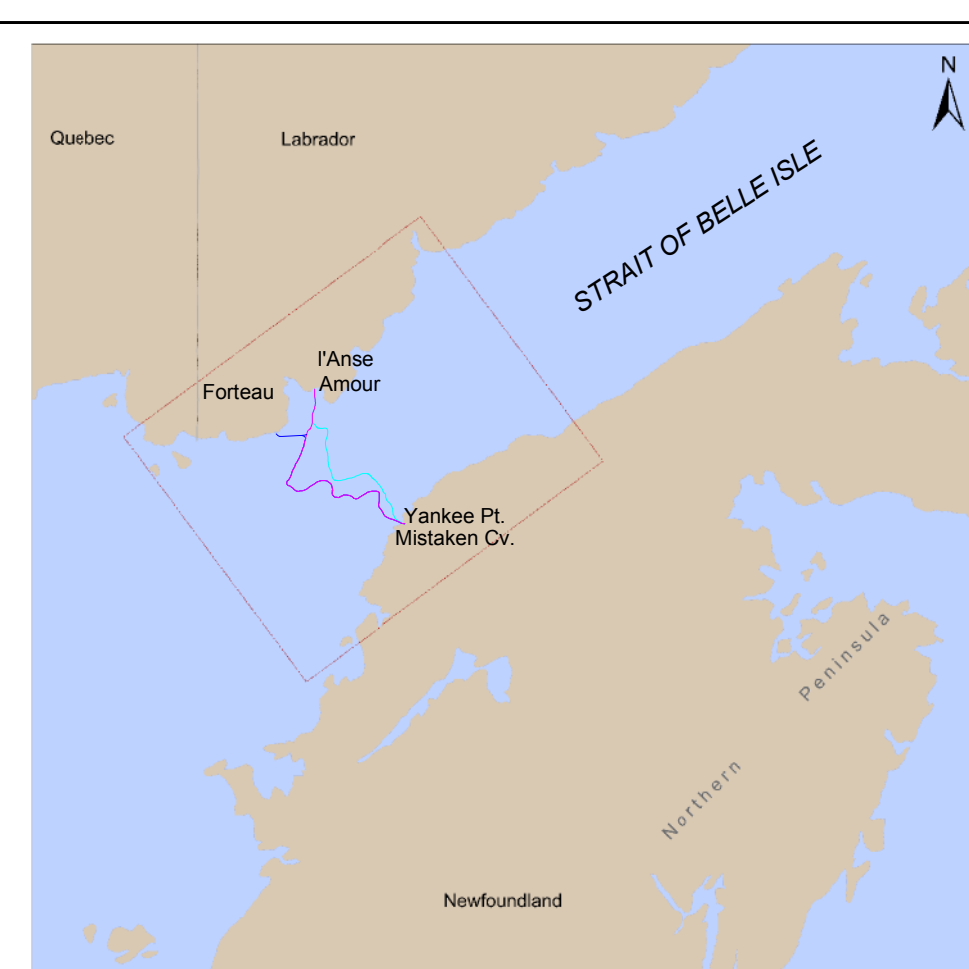
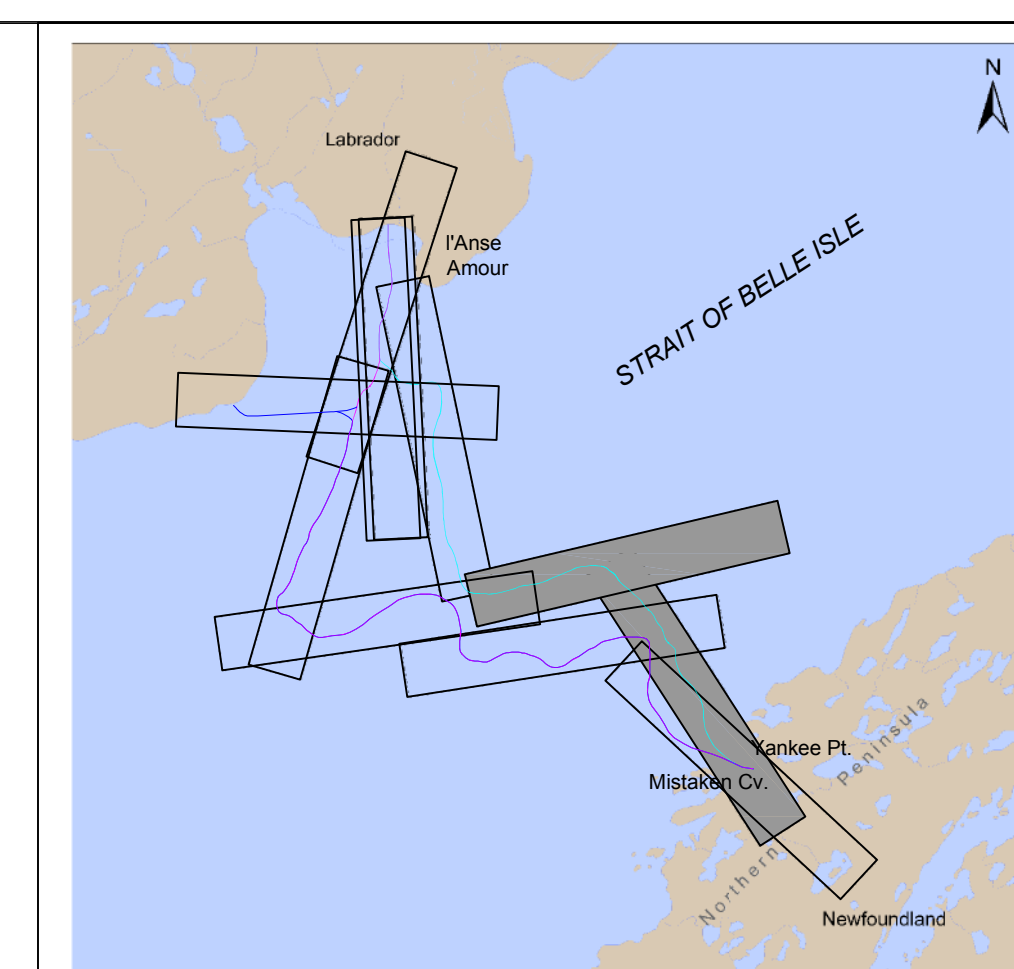


NOTES

NEARSHORE AND OFFSHORE CORRIDOR SURVEYS WERE PERFORMED AUGUST/OCTOBER 2007 ONBOARD THE SURVEY VESSELS M.V. CANADA (NEARSHORE) AND M.V. ANTICOSTI (OFFSHORE). NAVIGATION UTILIZED "TAPRIX" SOFTWARE WITH MULTIREFERENCE DIFFERENTIAL GPS.

CORRIDOR OPTIONS AS DEFINED BY FUGRO JACQUES GEOSURVEYS INC. IN CONSULTATION WITH HYDRO.



MAP PROJECTION DETAILS

GRS 80 ELLIPSOID
NORTH AMERICAN DATUM (NAD) 1983
UNIVERSAL TRANSVERSE MERCATOR PROJECTION, ZONE 21
CENTRAL MERIDIAN: 67° WEST
SCALE FACTOR AT CENTRAL MERIDIAN: 0.9996
FALSE EASTING: 500,000m
FALSE NORTHING: 0m
ALL POSITIONS CONDUCTED UTILIZING DIFFERENTIAL GLOBAL POSITIONING SYSTEM (DGPS)

Metres
HORIZONTAL SCALE
1 : 10,000

REVISIONS				
NO.	DATE	DESCRIPTION	DRAWN	APPROV.
1	DEC. 20, 2009	FINAL SUBMISSION	CSDDAC	LDJWL, EC
2	OCT. 26, 2009	SUBMISSION FOR REVIEW	CSDD	LDJWL, EC
REV.	DATE	DESCRIPTION	DRAWN	CHECKED

Fugro Jacques GeoSurveys Inc.
St. John's, NL

TITLE: MARINE HABITAT SURVEY
STRAIT OF BELLE ISLE
SUBMARINE CABLE CORRIDORS
EASTERN CORRIDOR (KP14.6-28.0KP)

FIGURE: N/A	REV 1
-------------	-------

ENCLOSURE: 2 East