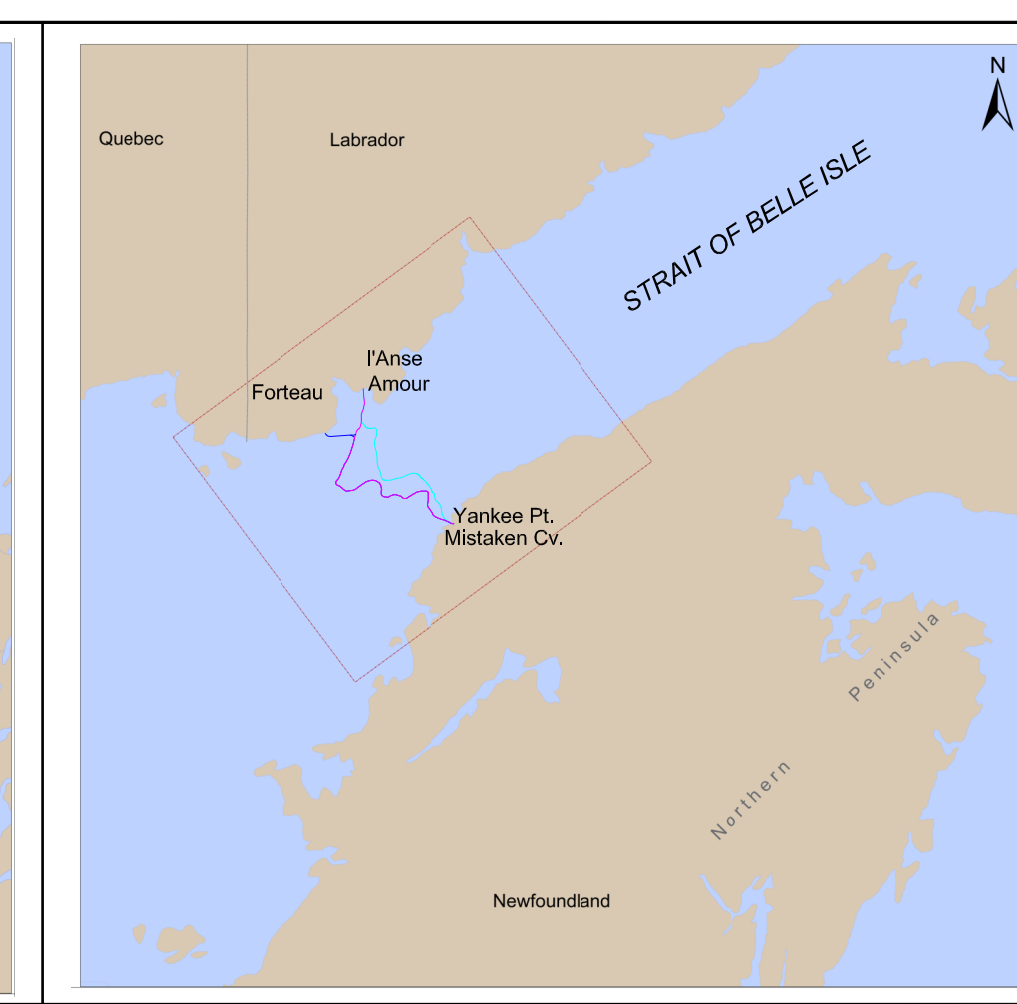
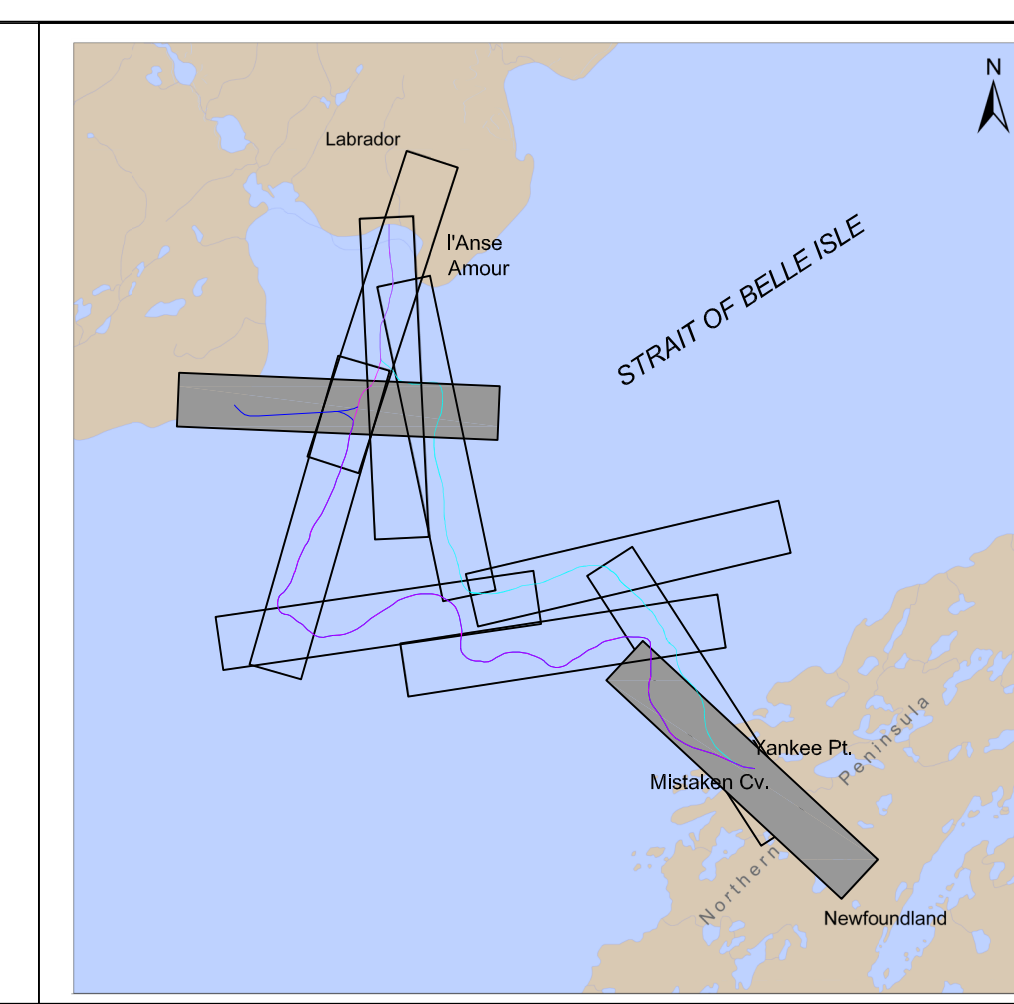
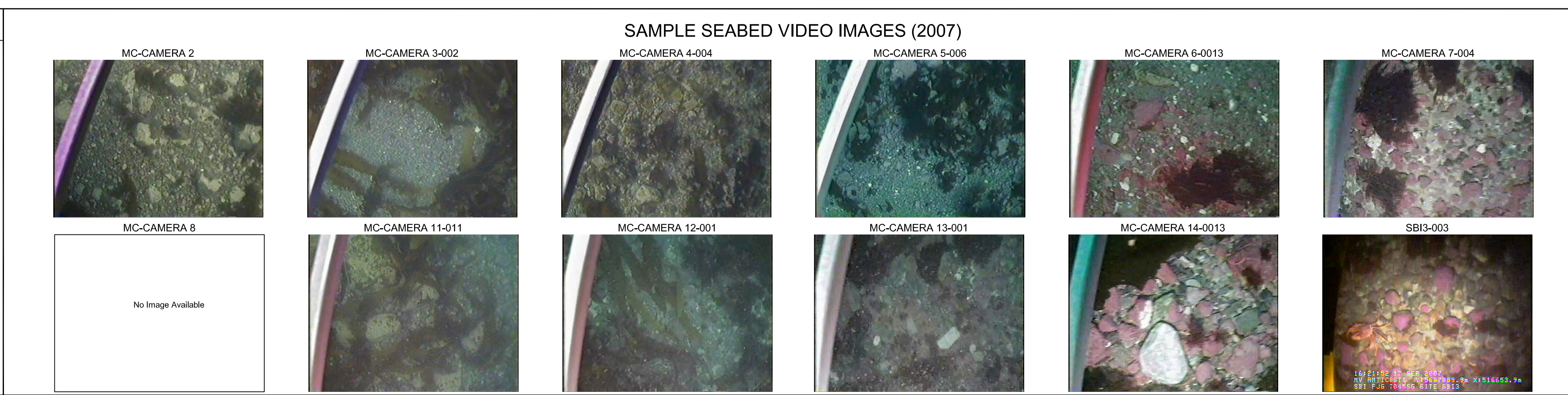


NOTES

NEARSHORE AND OFFSHORE CORRIDOR SURVEYS WERE PERFORMED AUGUST/OCTOBER 2007 ONBOARD THE SURVEY VESSELS M/V CANEVA (NEARSHORE) AND M/V ANTOINETTE (OFFSHORE). NAVIGATION UTILIZED "CARTOP" SOFTWARE WITH MULTIREFERENCE DIFFERENTIAL GPS.

CORRIDOR OPTIONS AS DEFINED BY FUGRO JACQUES GEOSURVEYS INC. IN CONSULTATION WITH NL HYDRO.



MAP PROJECTION DETAILS

GRS 80 ELLIPSOID
NORTH AMERICAN DATUM (NAD) 1983
UNIVERSAL TRANSVERSE MERCATOR PROJECTION: ZONE 21
CENTRAL MERIDIAN: 57° WEST
SCALE FACTOR AT CENTRAL MERIDIAN: 0.9996
FALSE EASTING: 500,000m
FALSE NORTHING: 0m
ALL POSITIONS CONDUCTED UTILIZING DIFFERENTIAL GLOBAL POSITIONING SYSTEM (DGPS)

500 400 300 200 100 0 250 500

METRES
HORIZONTAL SCALE
1 : 10,000

REVISIONS

REV	DATE	DESIGNATION	DRAWN	CHECKED	APPROV
1	DEC. 20, 2009	FINAL SUBMISSION	CS/DDAC	LD/DWL	EC
0	OCT. 26, 2009	SUBMISSION FOR REVIEW	CS/DDAC	LD/DWL	EC

Fugro Jacques Geosurveys Inc.
St. John's, NL

TITLE
MARINE HABITAT SURVEY
STRAIT OF BELLE ISLE
SUBMARINE CABLE CORRIDORS
WESTERN CORRIDOR (KP29-3-35 1KP) and
FORTEAU POINT (KP0-4.3KP)

FIGURE: N/A

ENCLOSURE: 3 West