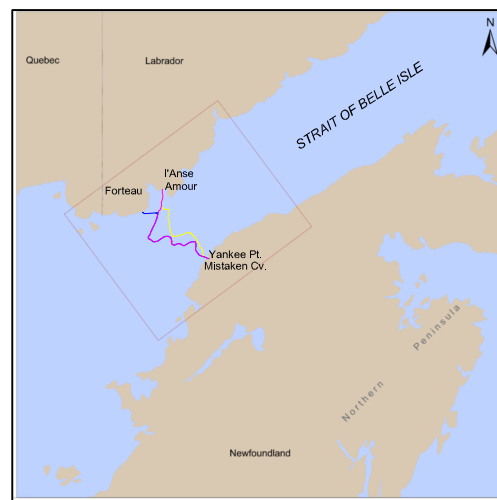
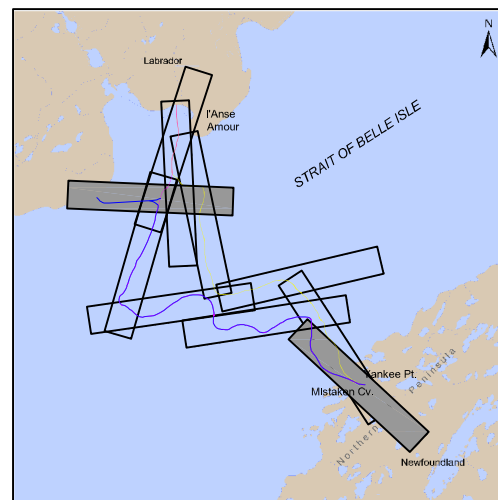
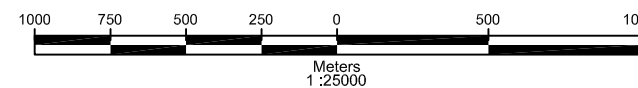


- LEGEND**
- EASTERN CORRIDOR CENTRELINE
 - WESTERN CORRIDOR CENTRELINE
 - FORTEAU POINT CORRIDOR CENTRELINE
 - 500m CORRIDOR BOUNDARY
 - 60 SEABED CONTOUR (m)
 - BEDROCK
 - COARSE-LARGE (140 TO > 1000 MM)
 - COARSE-SMALL (2 – 140 MM)
 - COARSE-SMALL / SHELLS
 - FINE (>0.06 – 2 MM)
 - SHELLS
 - KILOMETRE POST



MAP PROJECTION DETAILS

GRS 80 ELLIPSOID
 NORTH AMERICAN DATUM (NAD) 1983
 UNIVERSAL TRANSVERSE MERCATOR PROJECTION; ZONE 21
 CENTRAL MERIDIAN; 57° WEST
 SCALE FACTOR AT CENTRAL MERIDIAN; 0.9996
 FALSE EASTING; 500,000m
 FALSE NORTHING; 0m
 ALL POSITIONING CONDUCTED UTILIZING
 DIFFERENTIAL GLOBAL POSITIONING SYSTEM (DGPS)



| REVISIONS | | | | | |
|-----------|---------------|-----------------------|-------|---------|--------|
| REV. | DATE | DESIGNATION | DRAWN | CHECK'D | APPR'D |
| 5 | | | | | |
| 4 | | | | | |
| 3 | | | | | |
| 2 | | | | | |
| 1 | DEC. 20, 2009 | FINAL SUBMISSION | AC | LD/CWL | EC |
| 0 | OCT. 26, 2009 | SUBMISSION FOR REVIEW | AC | LD/CWL | EC |



TITLE
**MARINE HABITAT SURVEY
 STRAIT OF BELLE ISLE
 SUBMARINE CABLE CORRIDORS
 WESTERN CORRIDOR: KP 29.3 to 35.1 and
 FORTEAU POINT KP 0 to 4.3**

| | | |
|----------------------------------|-----------------------|---------------|
| NALCOR No.: | FIGURE: 3 WEST | REV. 1 |
| FJG PROJ. No. : 9056SG-001 | | |
| SURVEY DATE : AUG. - OCT, 2007 | | |
| DRAWING DATE : DECEMBER 20, 2009 | | |