

FIGURE SDSS 2-1



Overlap of 100% and 66% probability of occupancy kernels (winter season) with ELC rankings for preferred winter habitat - Northern Peninsula (1979-2011)

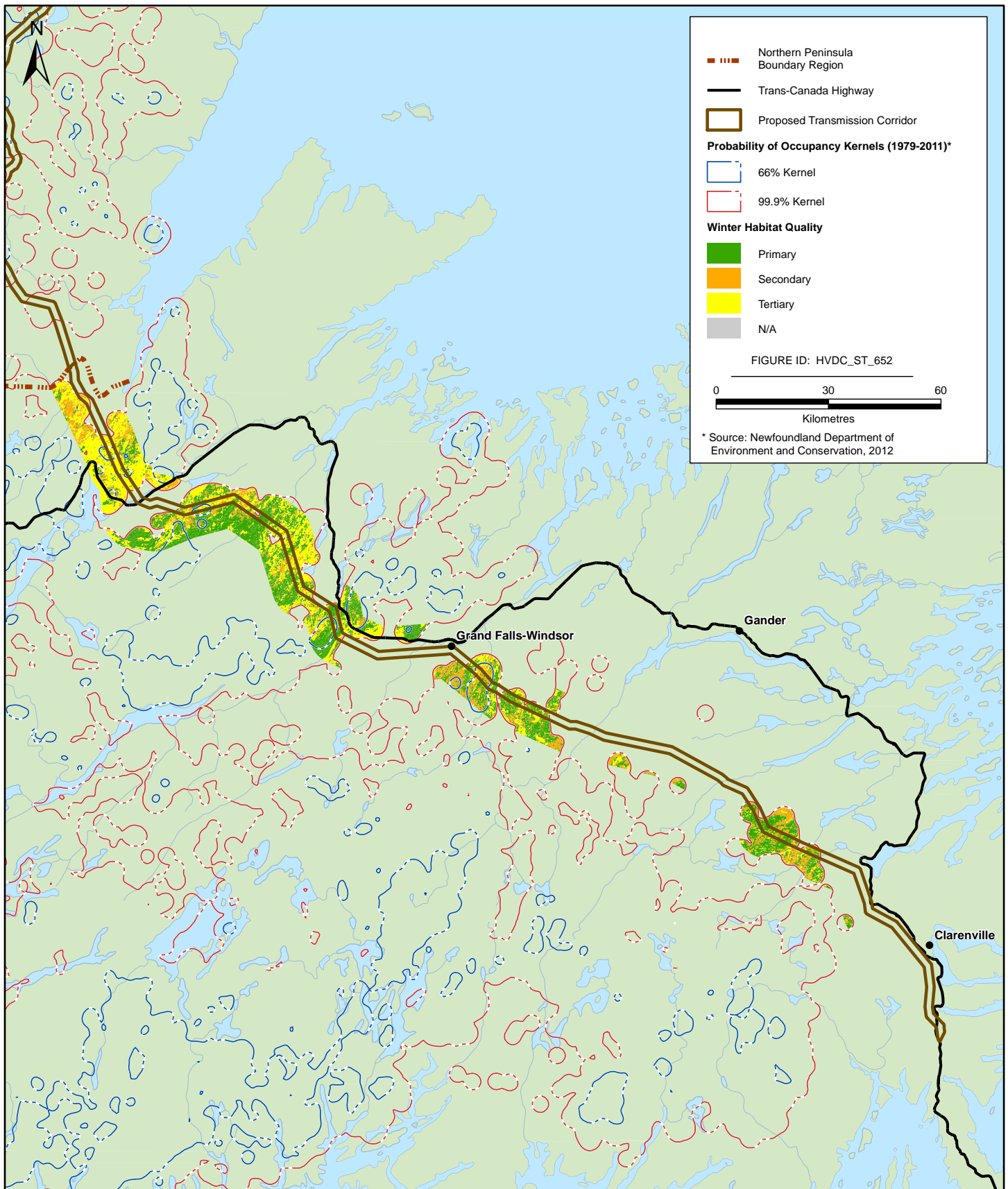


FIGURE SDSS 2-2



Overlap of 100% and 66% probability of occupancy kernels (winter season) with ELC rankings for preferred winter habitat - Central and Eastern Newfoundland (1979-2011)

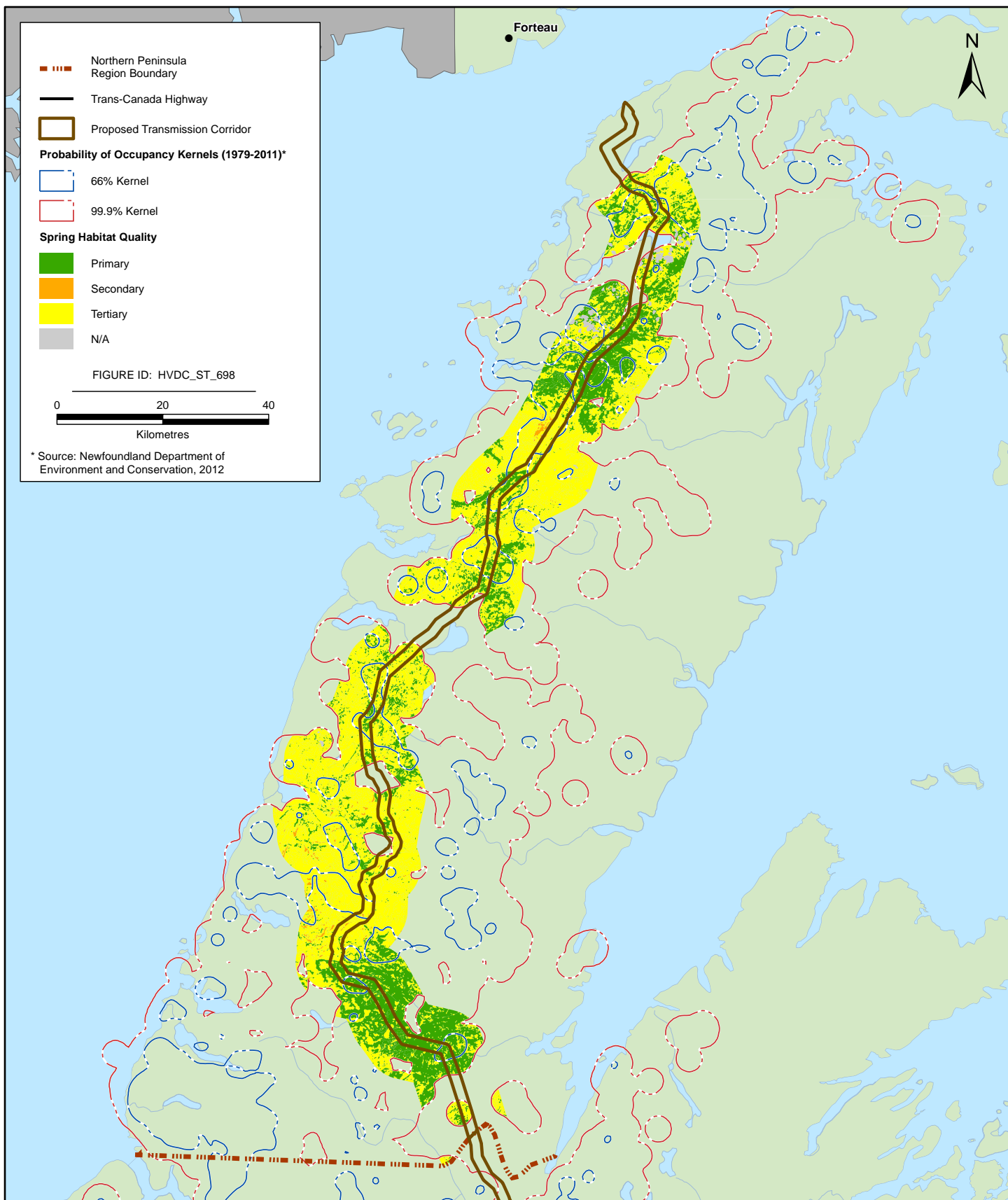


FIGURE SDSS 2-3



Overlap of 100% and 66% probability of occupancy kernels (spring season) with ELC rankings for preferred spring habitat - Northern Peninsula (1979-2011)



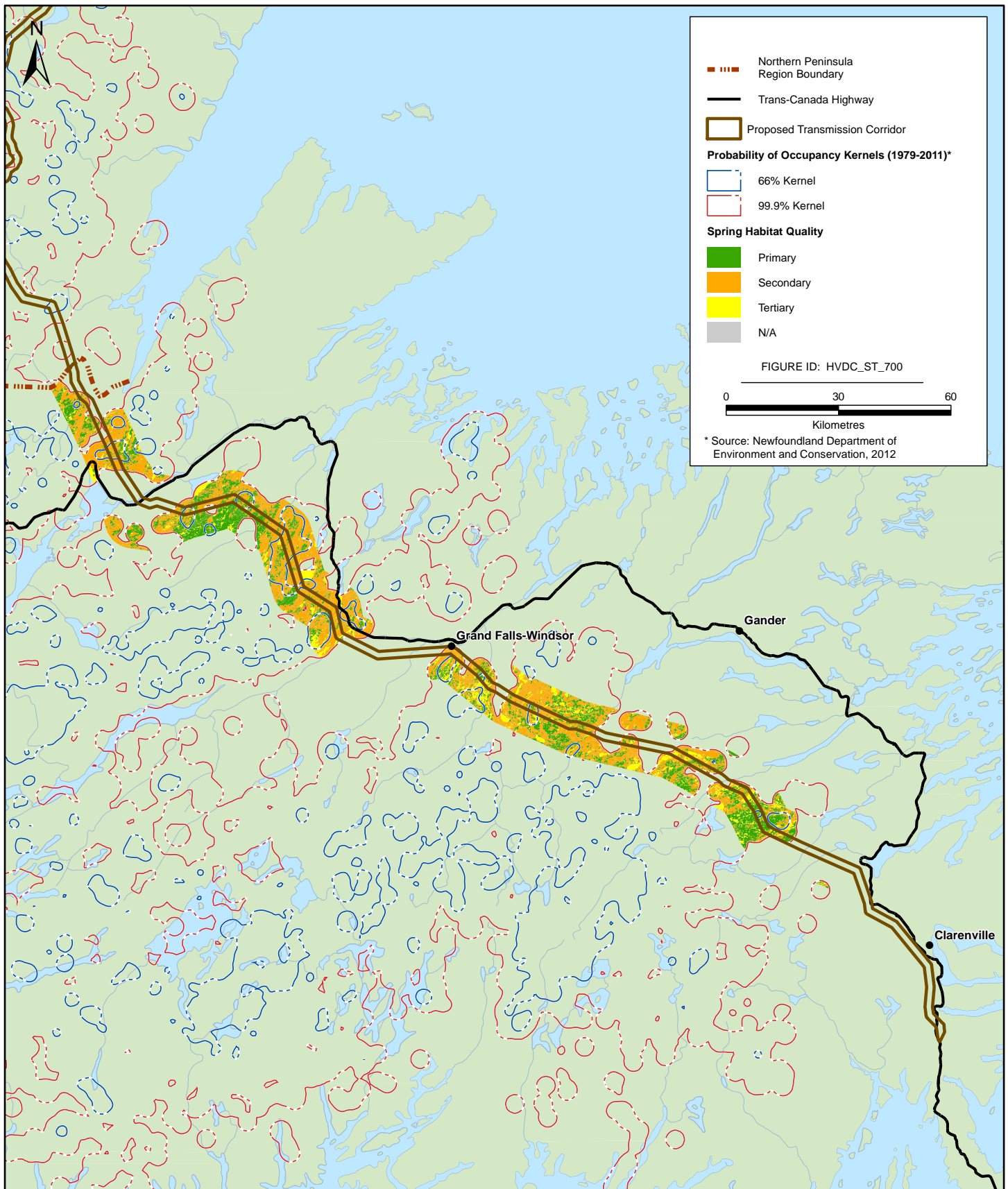


FIGURE SDSS 2-4



Overlap of 100% and 66% probability of occupancy kernels (spring season) with ELC rankings for preferred spring habitat - Central and Eastern Newfoundland (1979-2012)



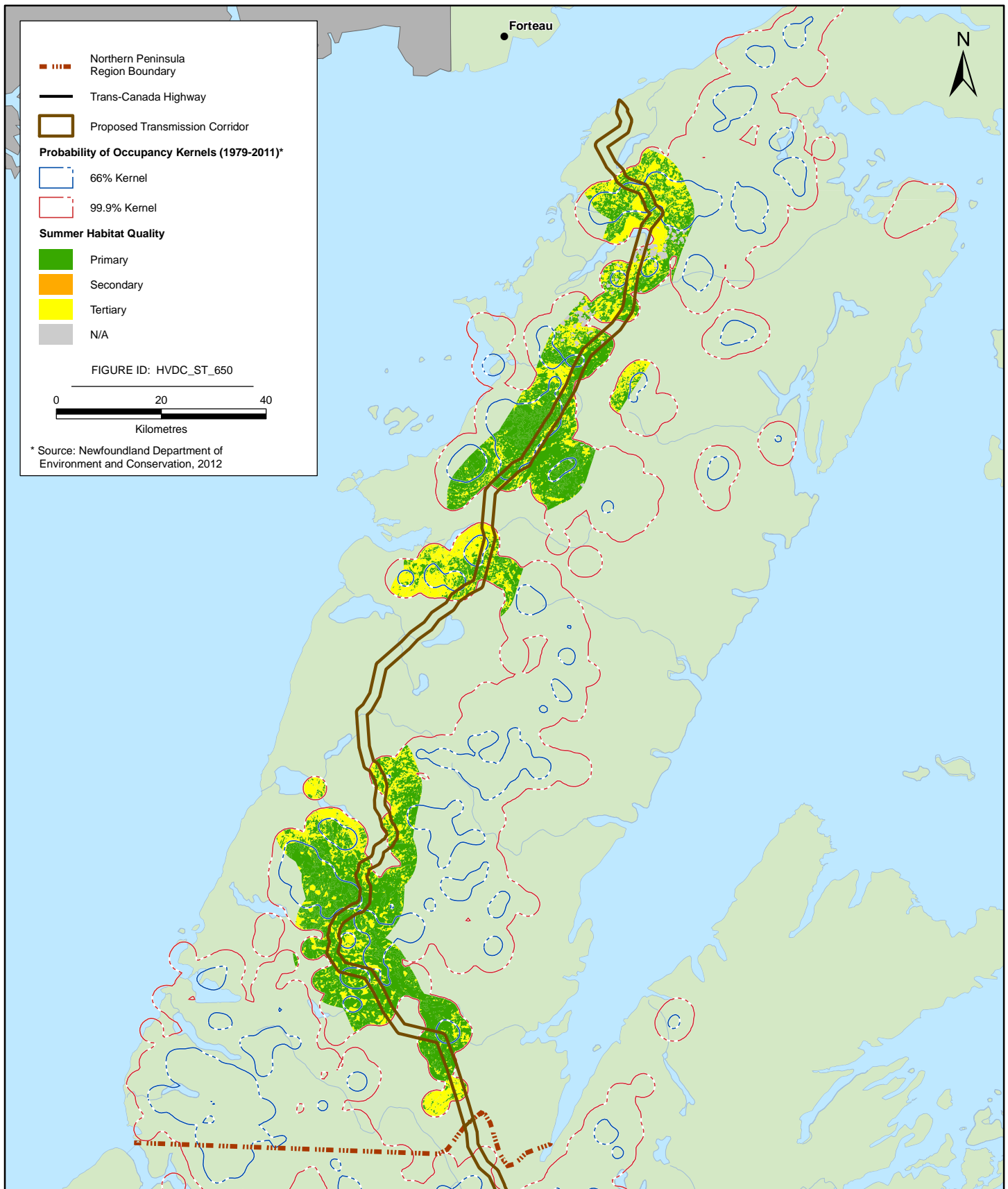


FIGURE SDSS 2-5



Overlap of 100% and 66% probability of occupancy kernels (summer season) with ELC rankings for preferred summer habitat - Northern Peninsula (1979-2011)