

FIGURE SDSS 2-6



Overlap of 100% and 66% probability of occupancy kernels (summer season) with ELC rankings for preferred summer habitat - Central and Eastern Newfoundland (1979-2012)

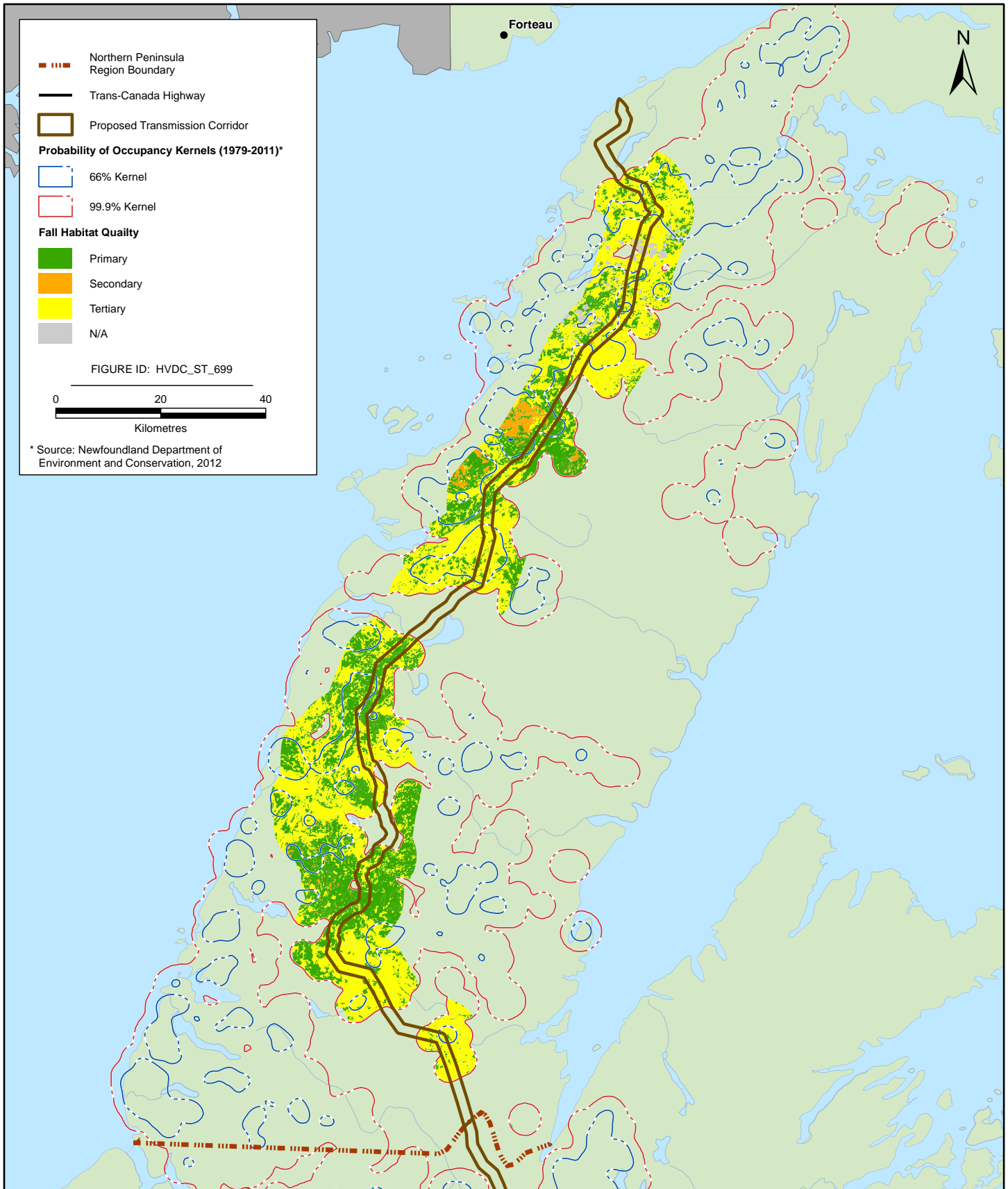


FIGURE SDSS 2-7



Overlap of 100% and 66% probability of occupancy kernels (fall season) with ELC rankings for preferred fall habitat - Northern Peninsula (1979-2011)

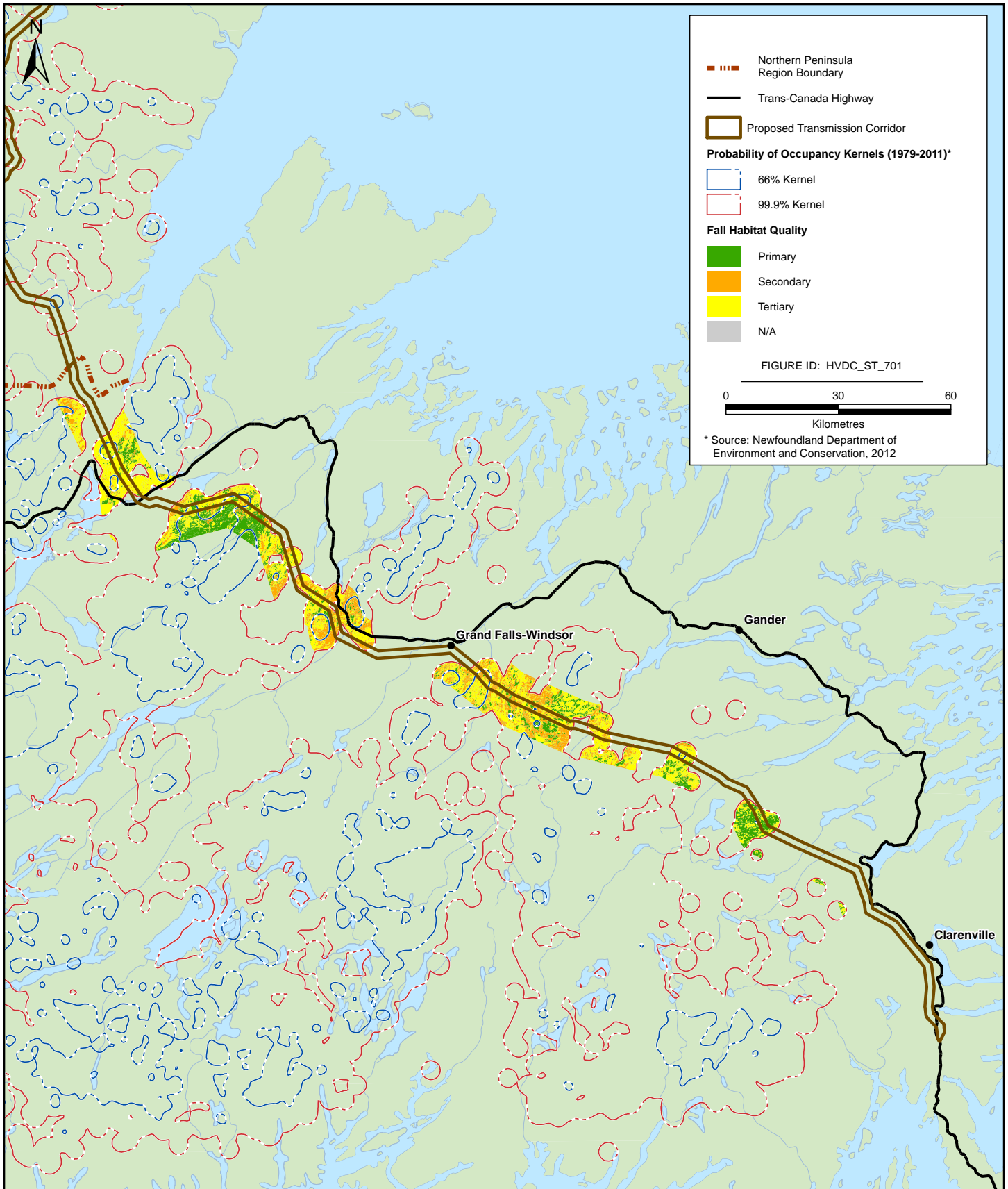


FIGURE SDSS 2-8



Overlap of 100% and 66% probability of occupancy kernels (fall season) with ELC rankings for preferred fall habitat - Central and Eastern Newfoundland (1979-2012)

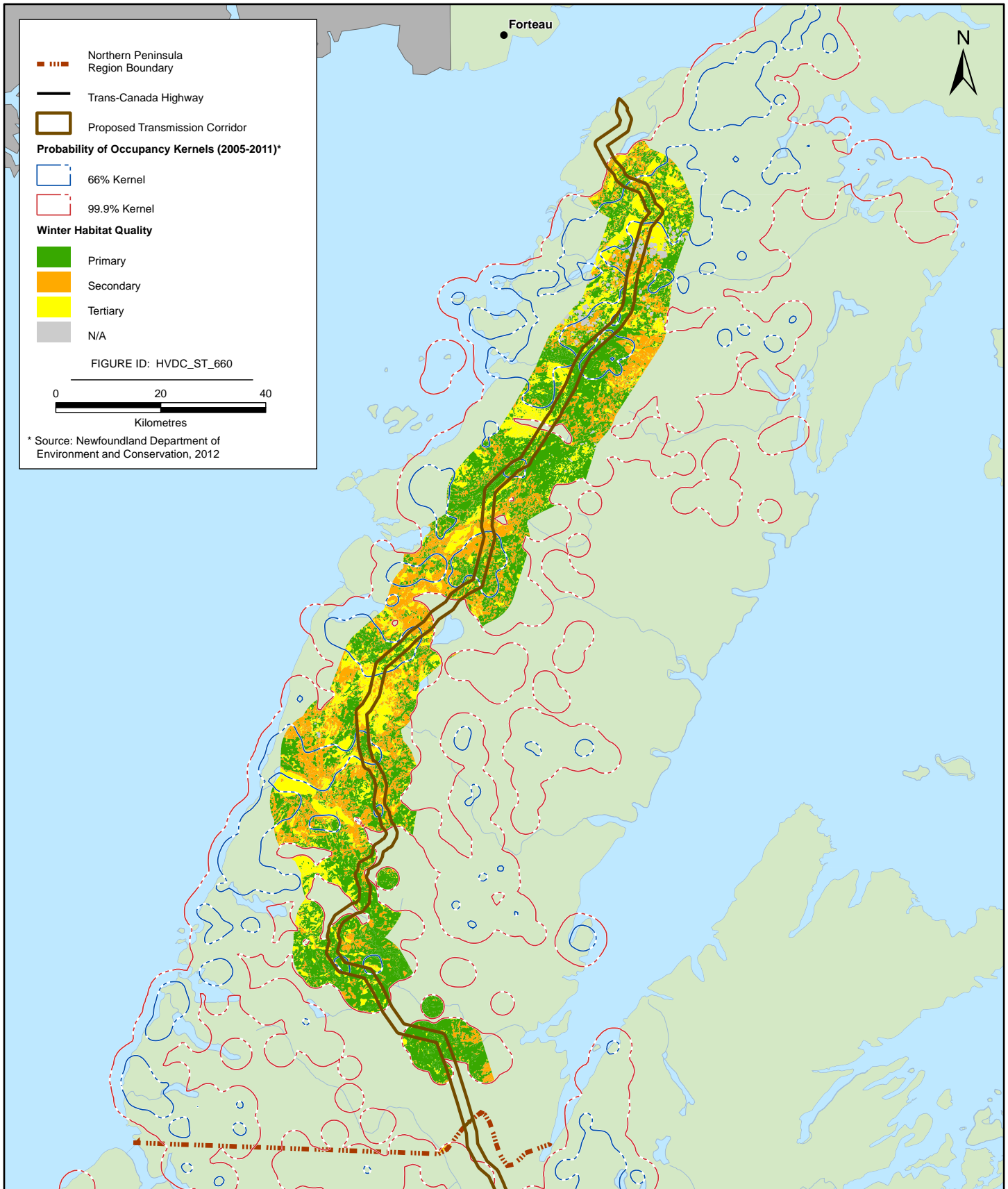


FIGURE SDSS 2-9



Overlap of 100% and 66% probability of occupancy kernels (winter season) with ELC rankings for preferred winter habitat - Northern Peninsula (2005-2011)

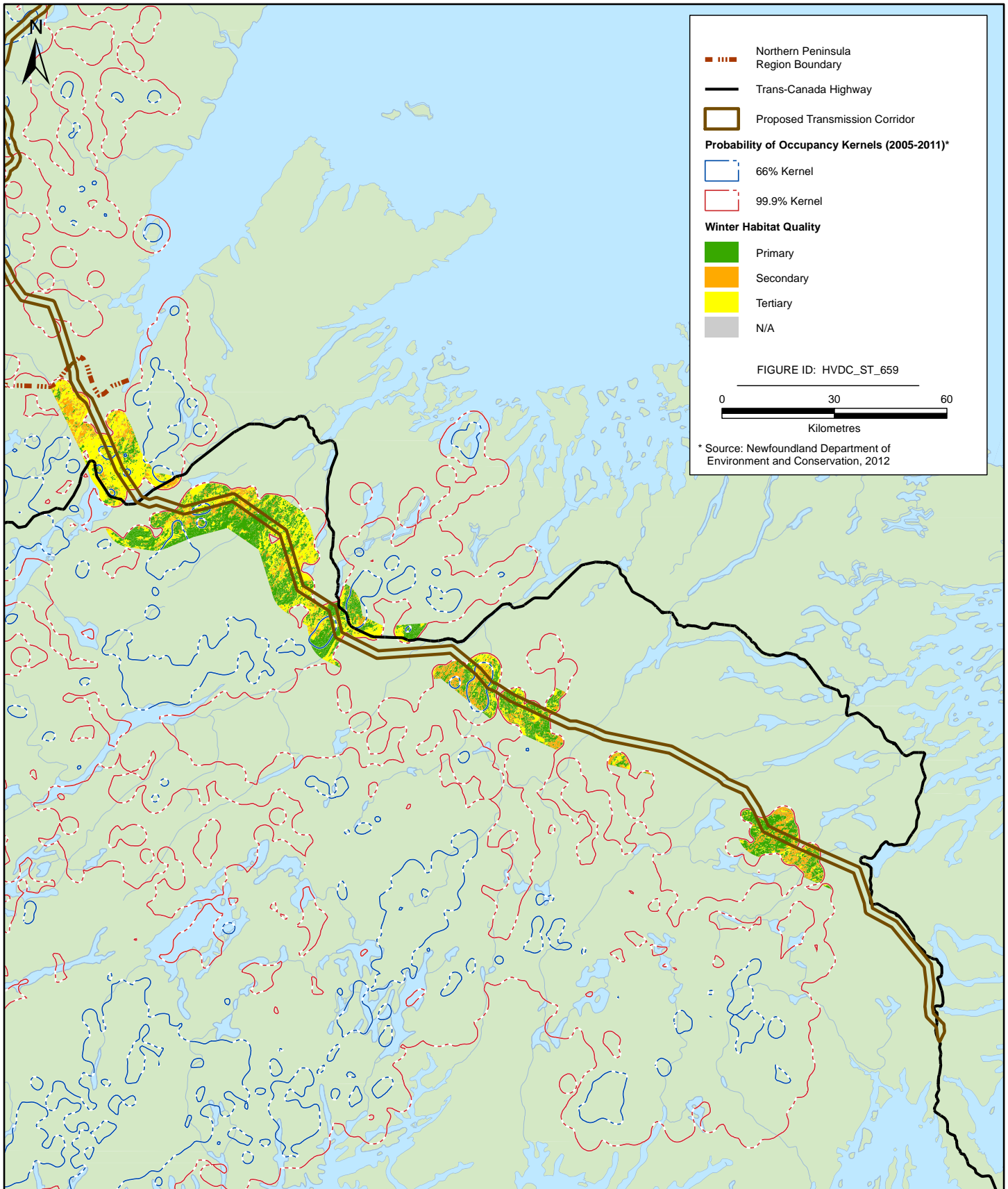


FIGURE SDSS 2-10



Overlap of 100% and 66% probability of occupancy kernels (winter season) with ELC rankings for preferred winter habitat - Central and Eastern Newfoundland (2005-2011)