

FIGURE SDSS 2-11



Overlap of 100% and 66% probability of occupancy kernels (spring season) with ELC rankings for preferred spring habitat - Northern Peninsula (2005-2011)

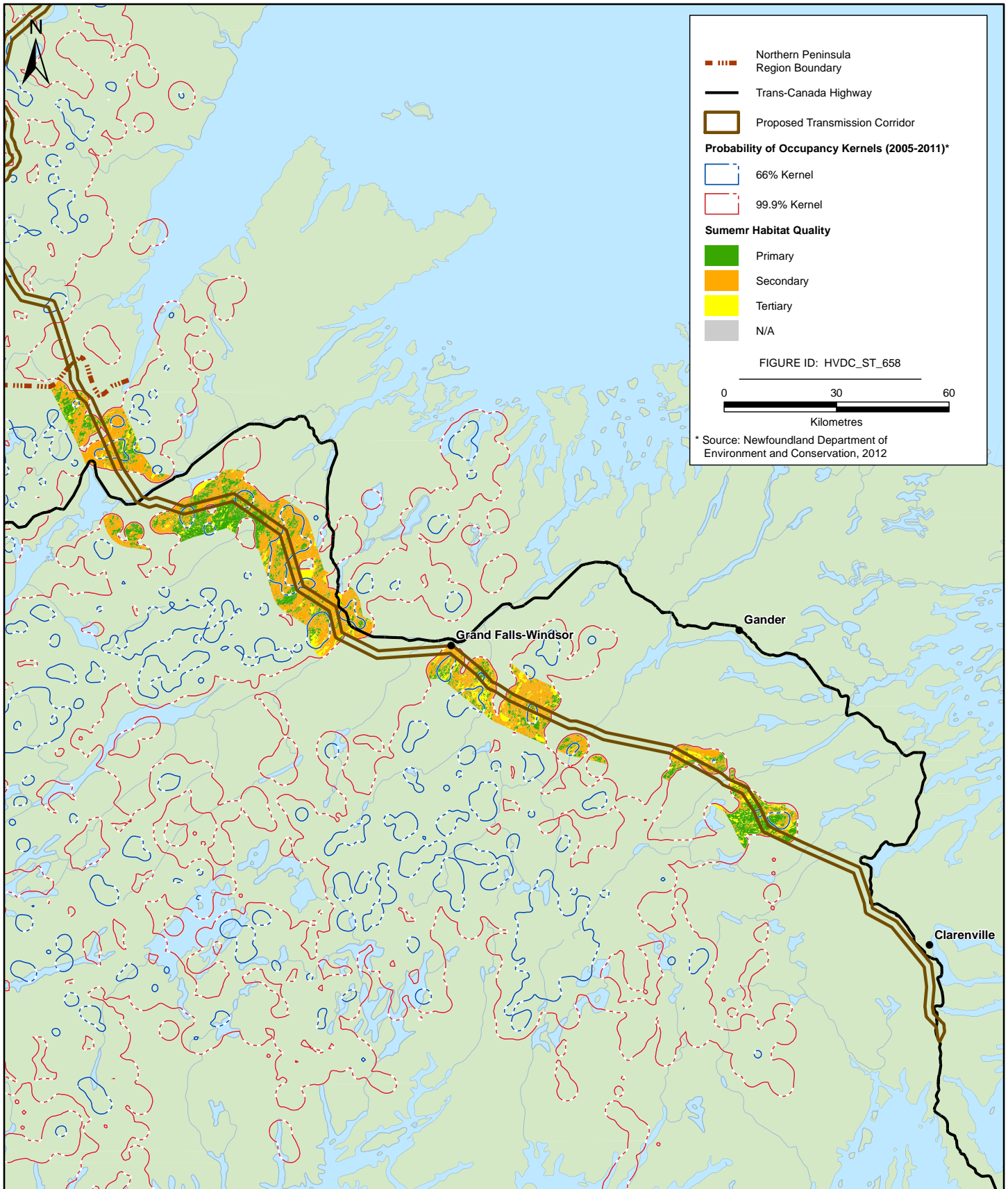


FIGURE SDSS 2-12



Overlap of 100% and 66% probability of occupancy kernels (spring season) with ELC rankings for preferred spring habitat - Central and Eastern Newfoundland (2005-2011)

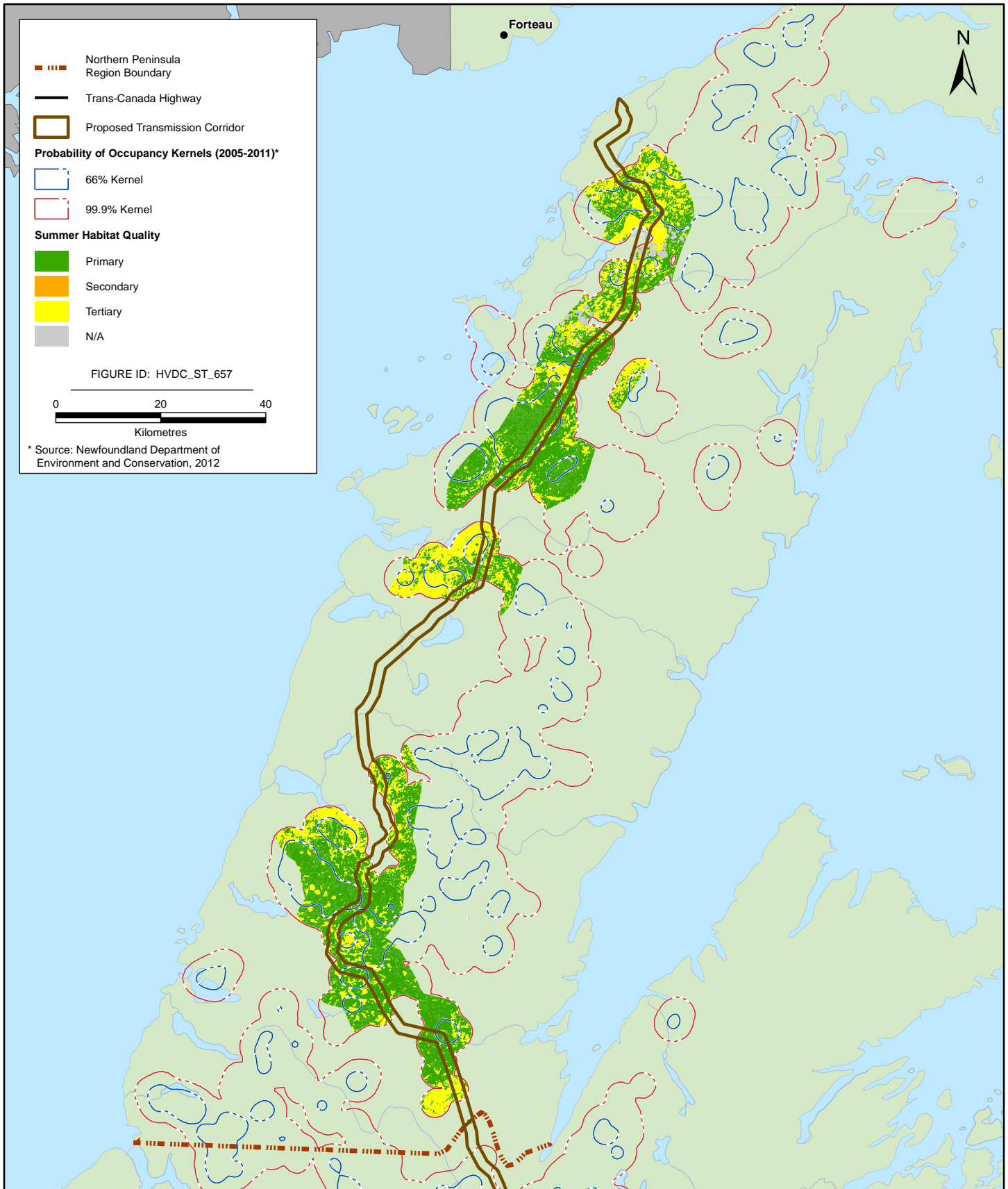


FIGURE SDSS 2-13



Overlap of 100% and 66% probability of occupancy kernels (summer season) with ELC rankings for preferred summer habitat - Northern Peninsula (2005-2011)

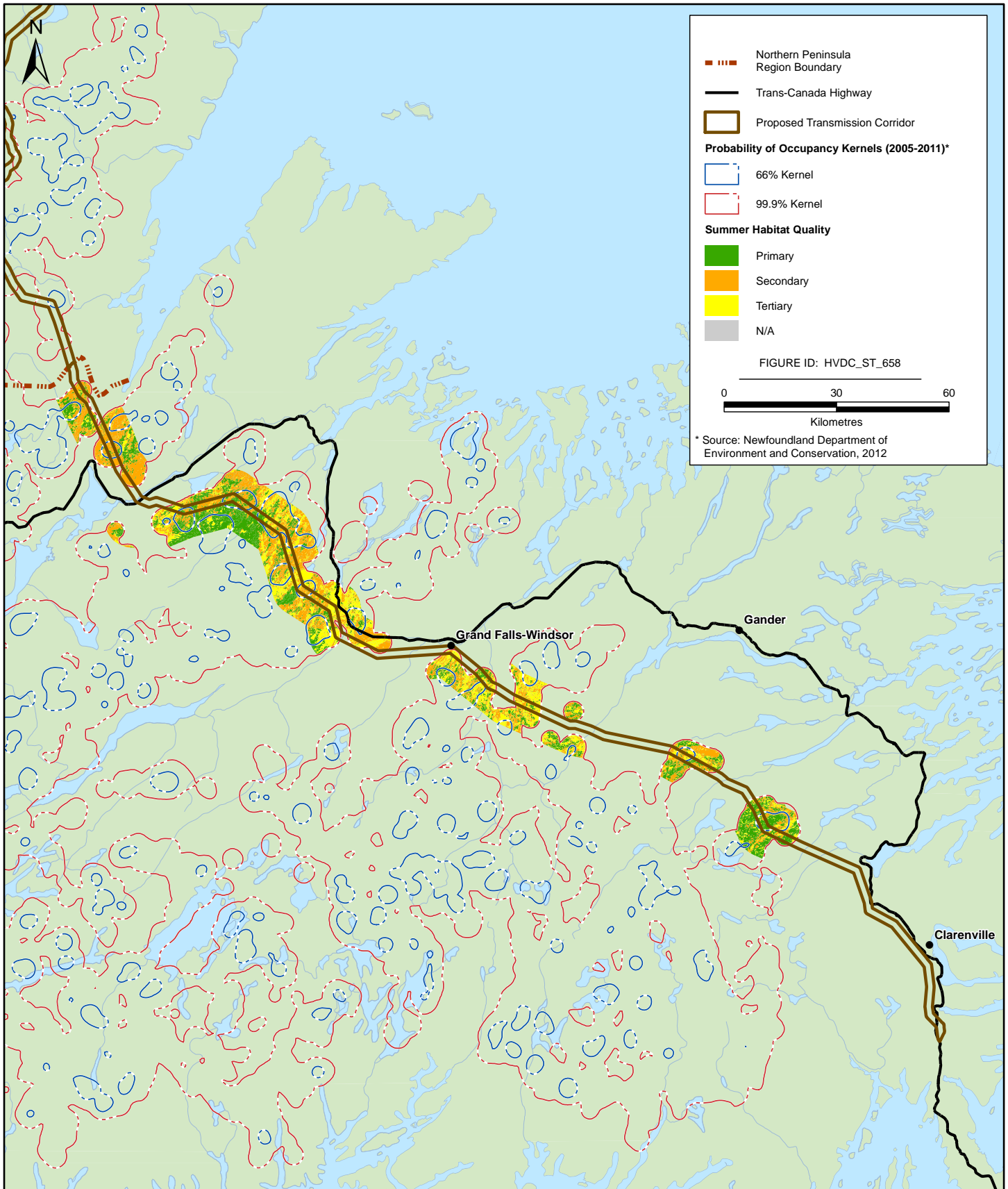


FIGURE SDSS 2-14



Overlap of 100% and 66% probability of occupancy kernels (summer season) with ELC rankings for preferred summer habitat - Central and Eastern Newfoundland (2005-2011)

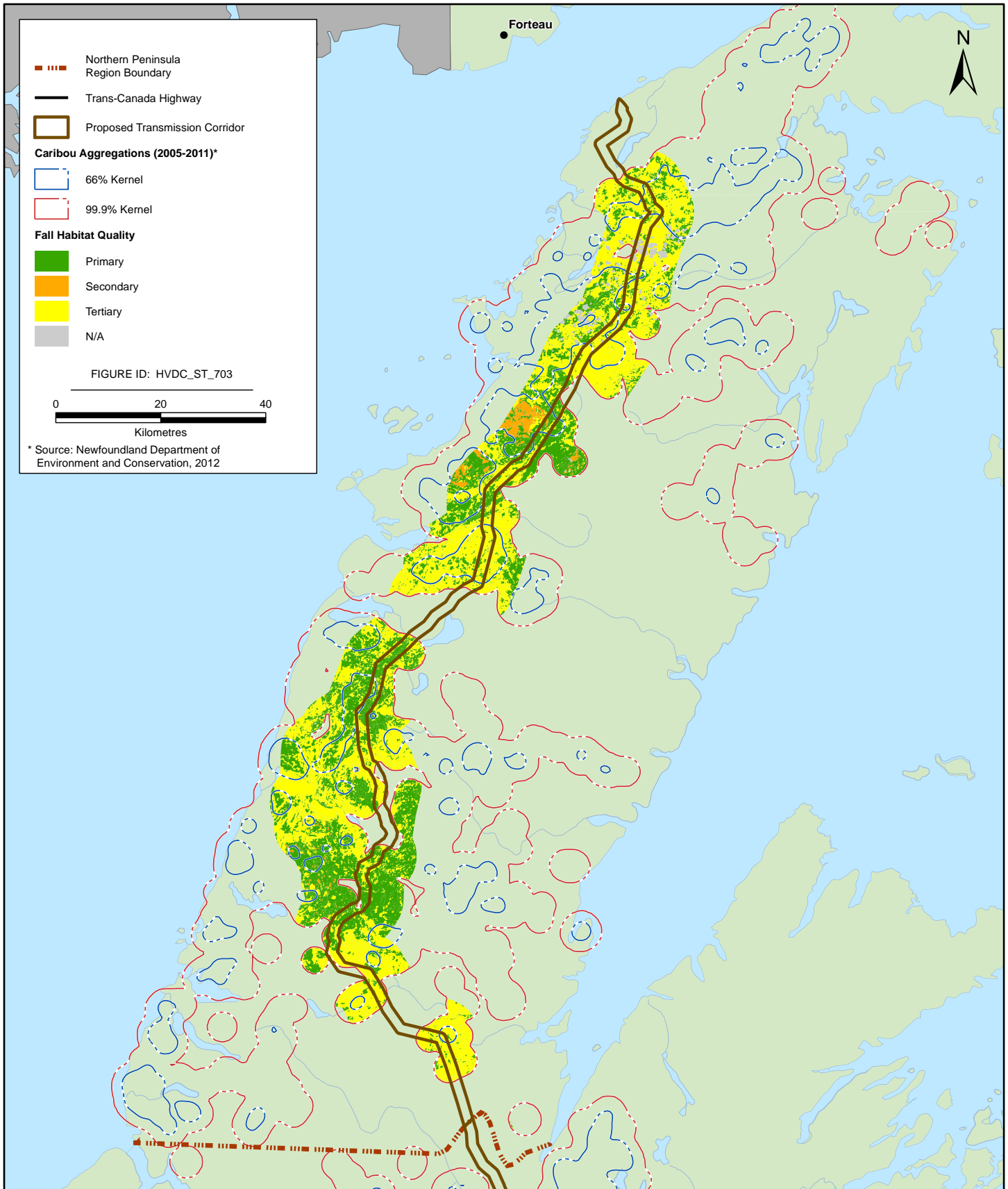


FIGURE SDSS 2-15



Overlap of 100% and 66% caribou kernels (fall season) with ELC rankings for preferred fall habitat - Northern Peninsula (2005-2011)