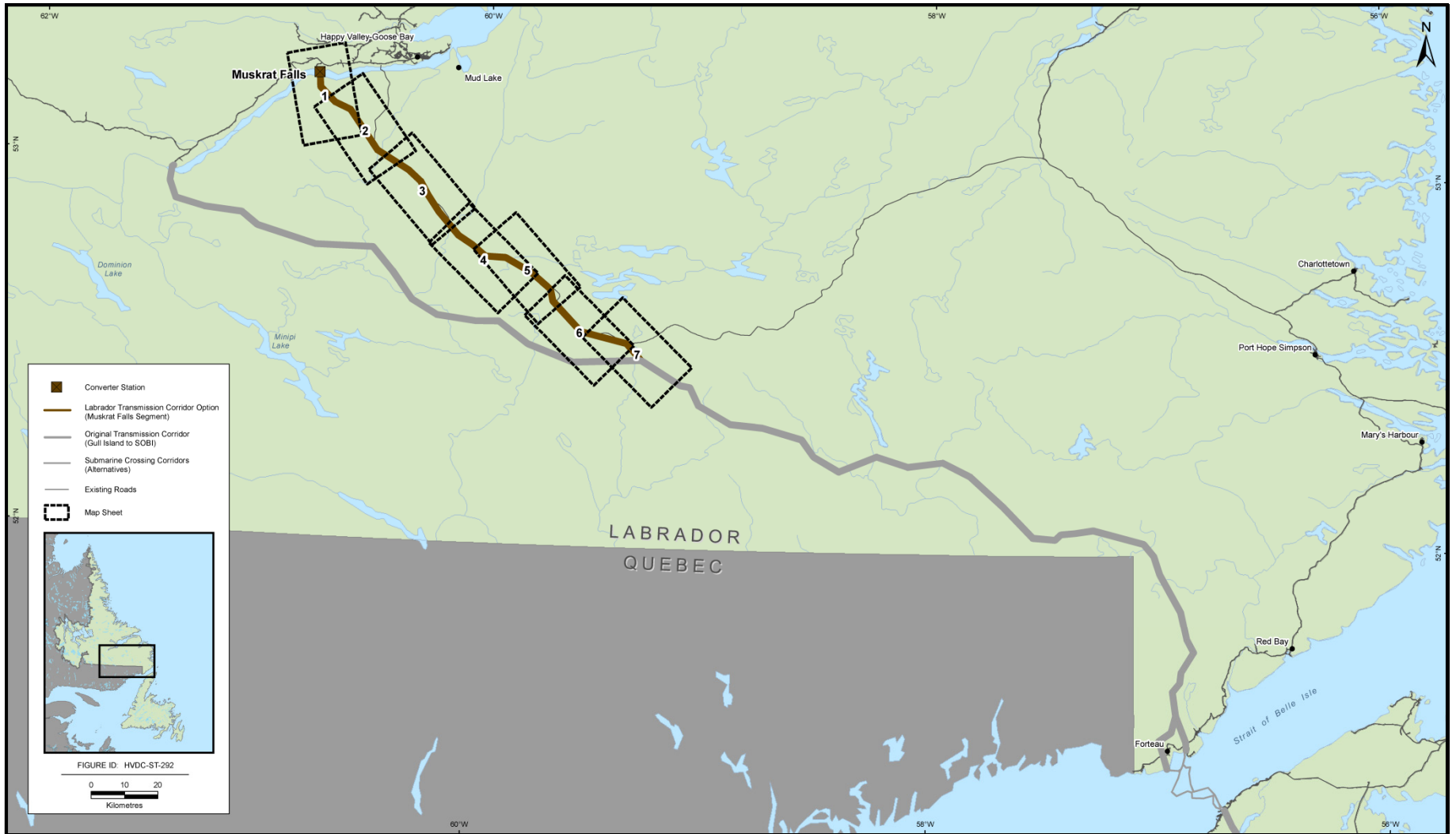


APPENDIX A

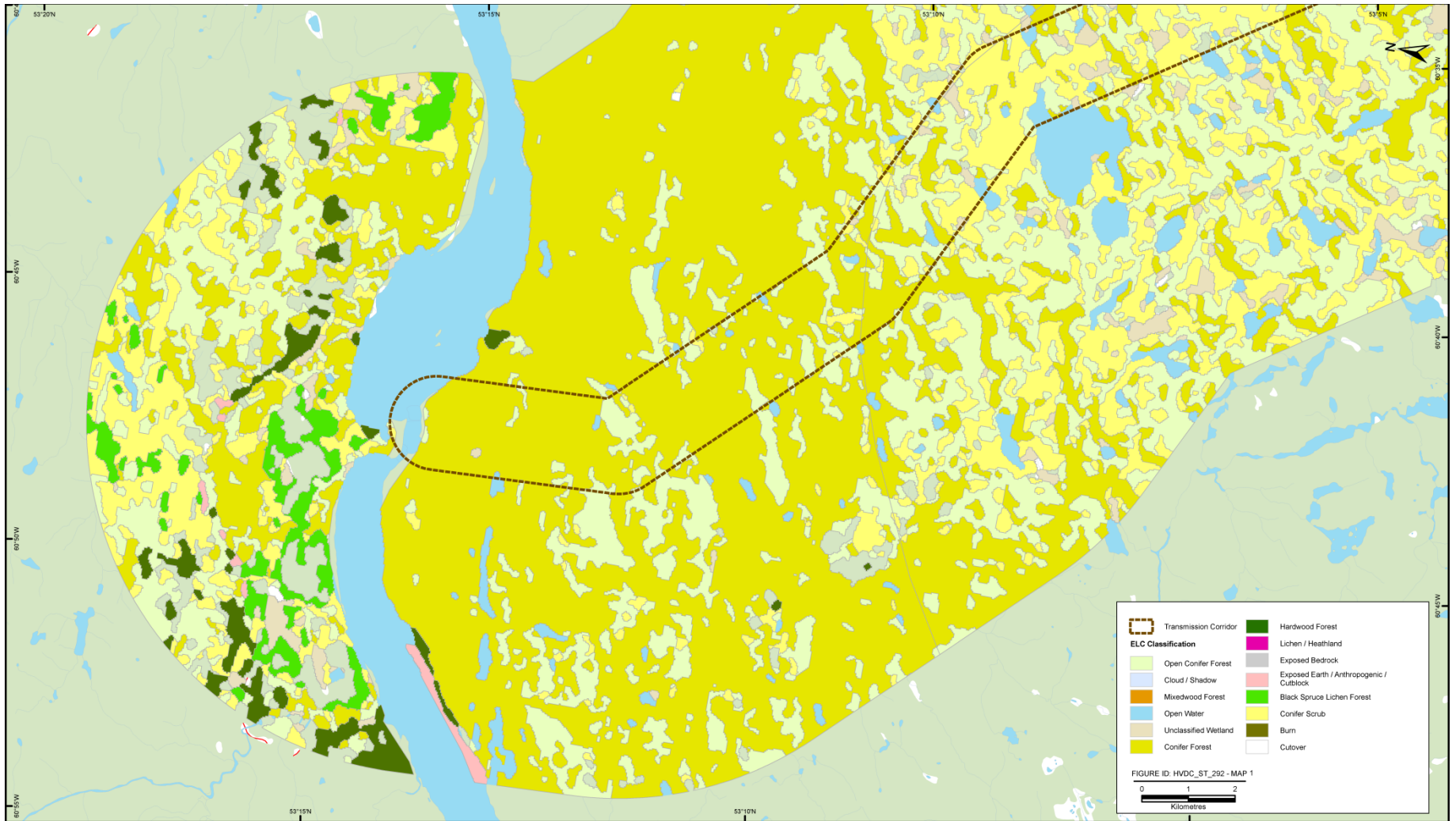
Ecological Land Classification Map Atlas



INDEX

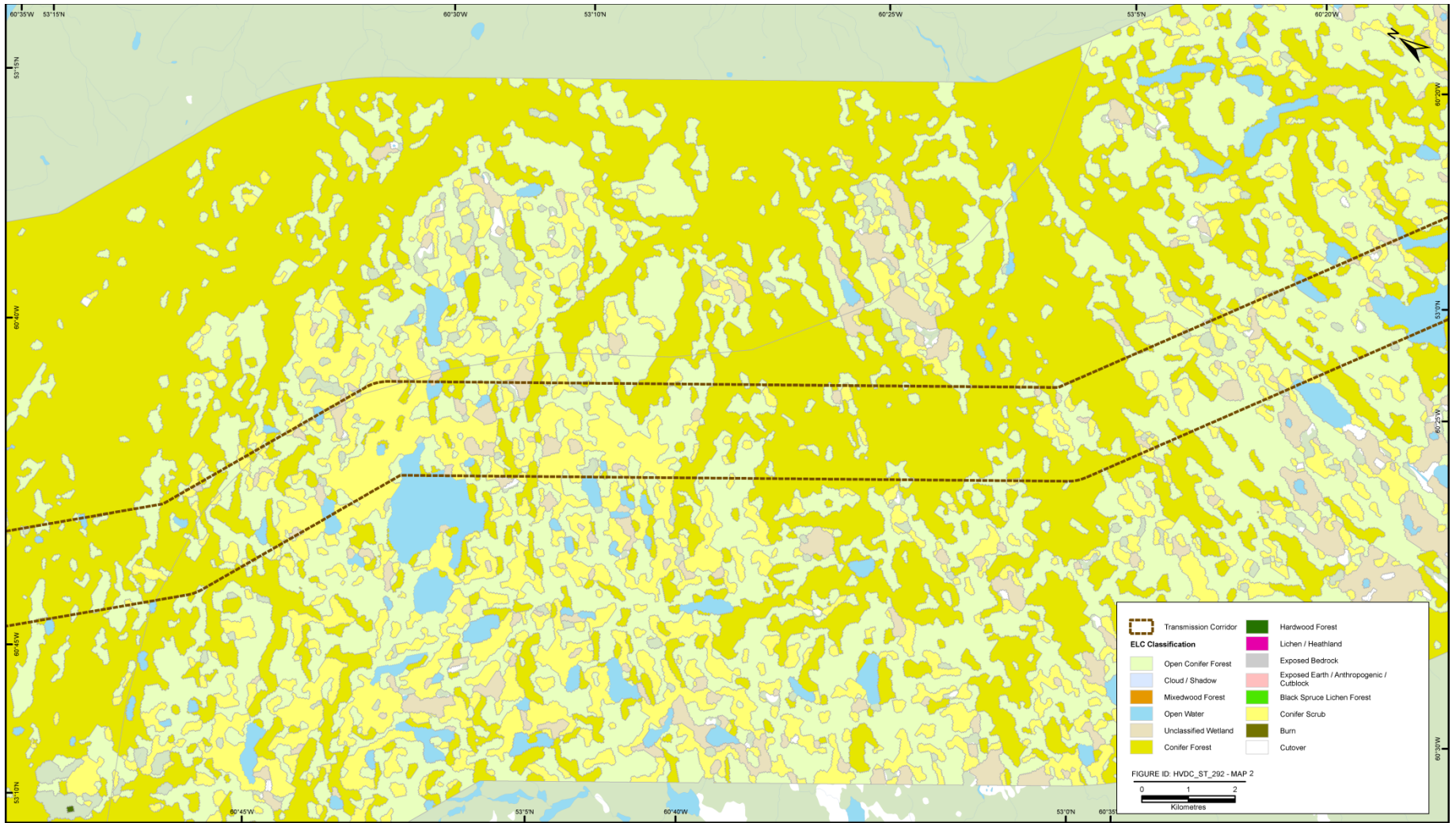


Labrador - Island Transmission Link: Muskrat Falls Corridor Option
Ecological Land Classification: Map Index



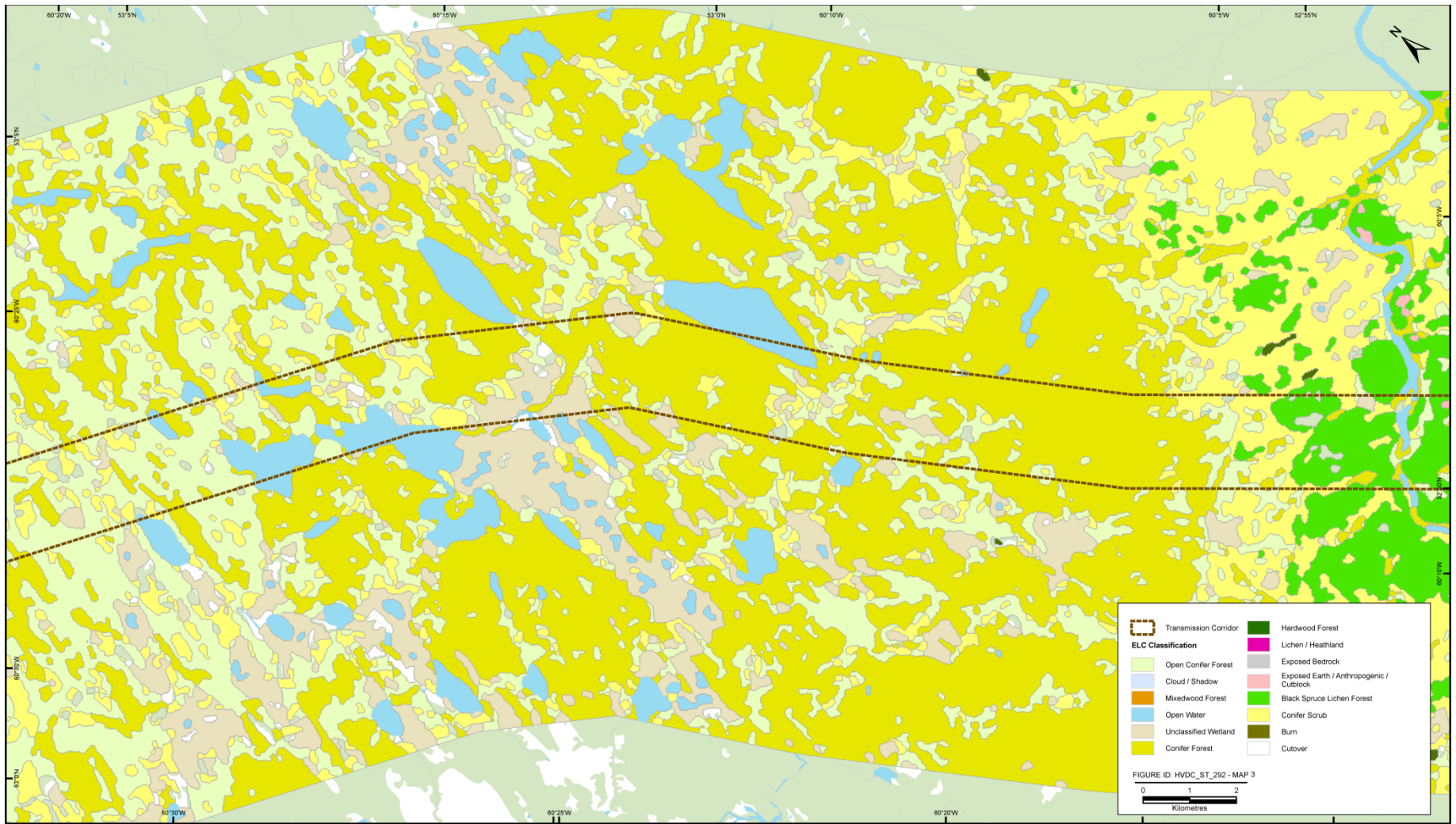
MAP 1

Labrador – Island Transmission Link: Muskrat Falls Corridor Segment
Ecological Land Classification



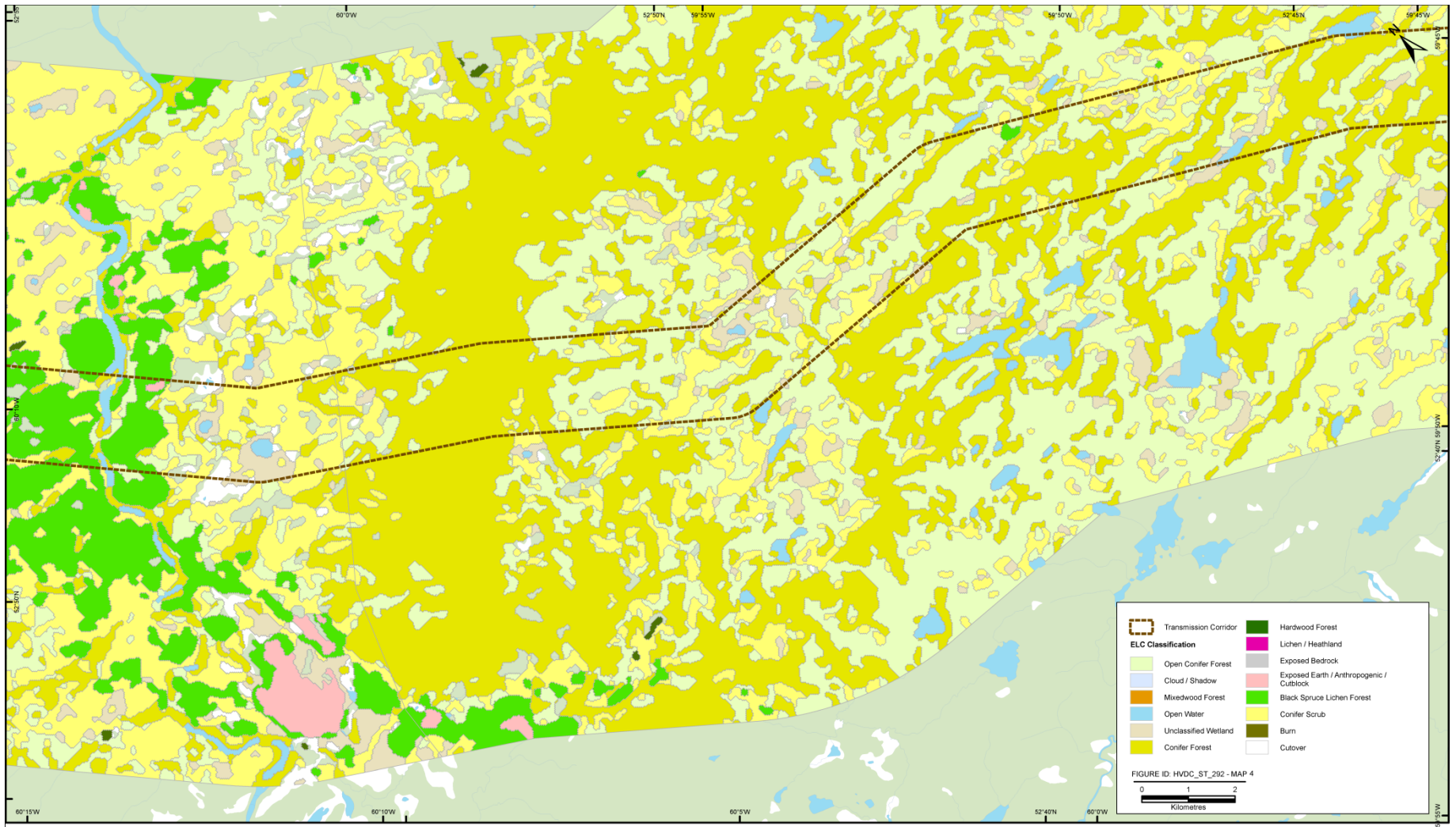
MAP 2

**Labrador – Island Transmission Link: Muskrat Falls Corridor Segment
Ecological Land Classification**



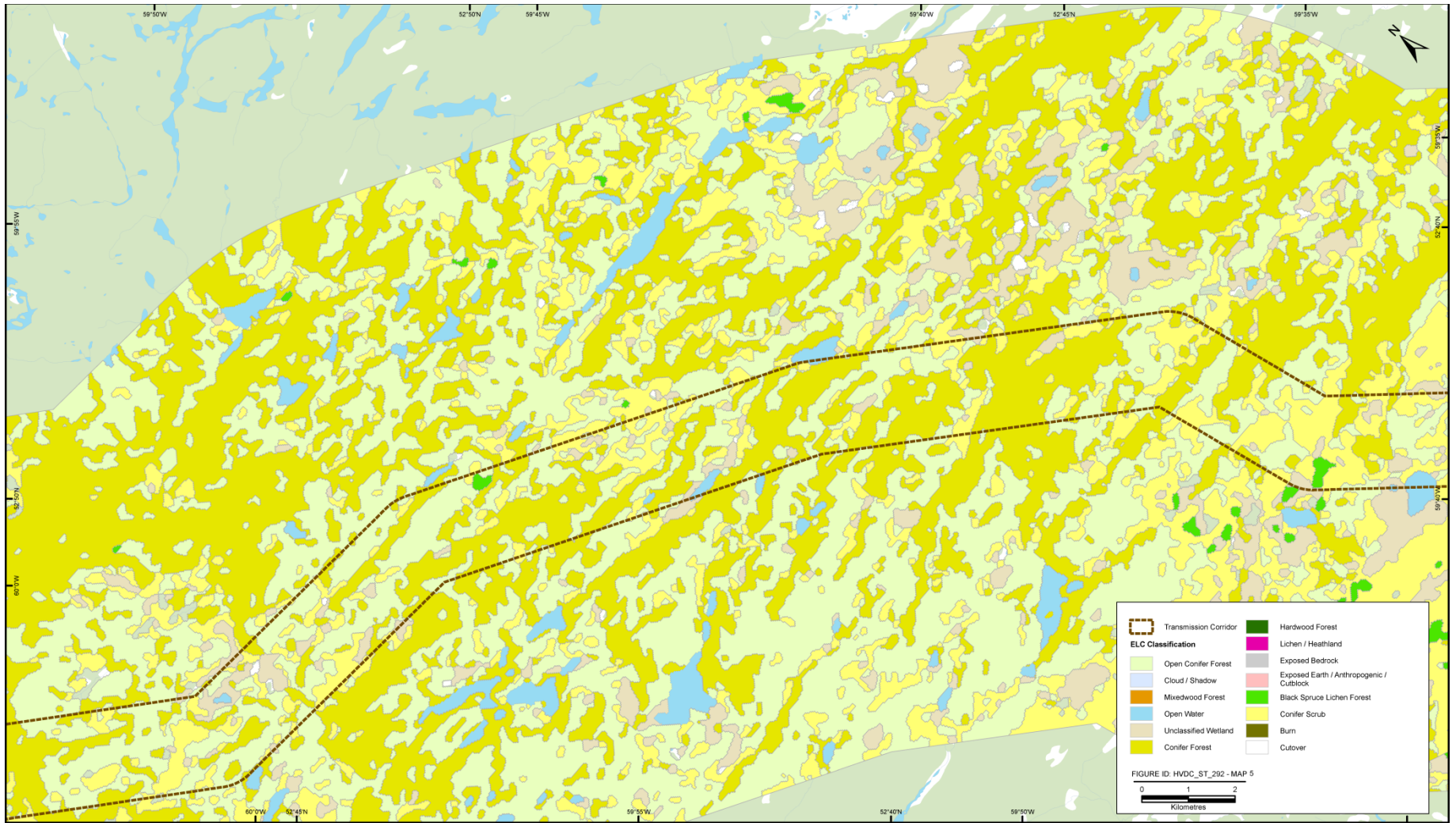
MAP 3

Labrador – Island Transmission Link: Muskrat Falls Corridor Segment
Ecological Land Classification



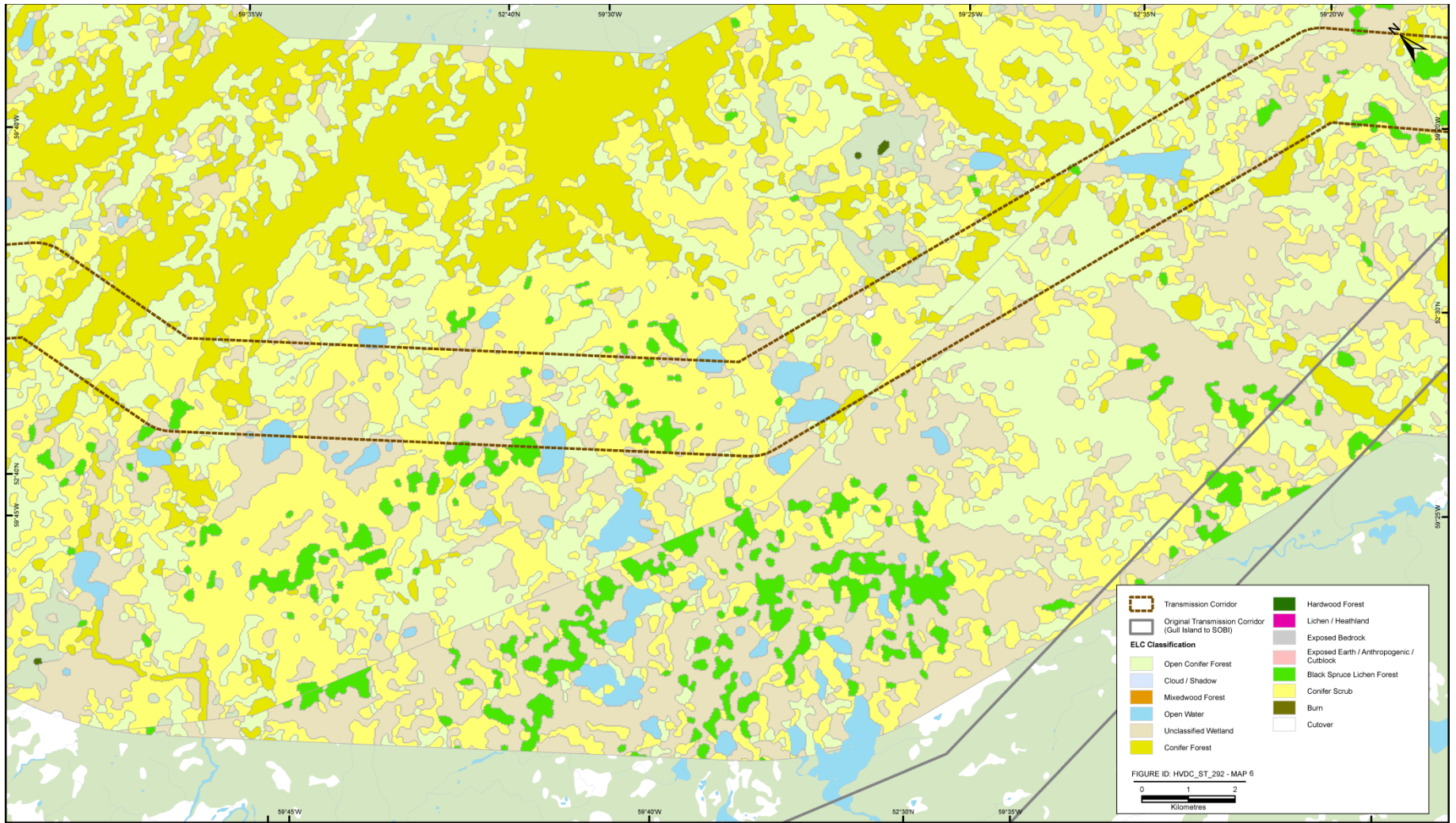
MAP 4

Labrador – Island Transmission Link: Muskrat Falls Corridor Segment
Ecological Land Classification



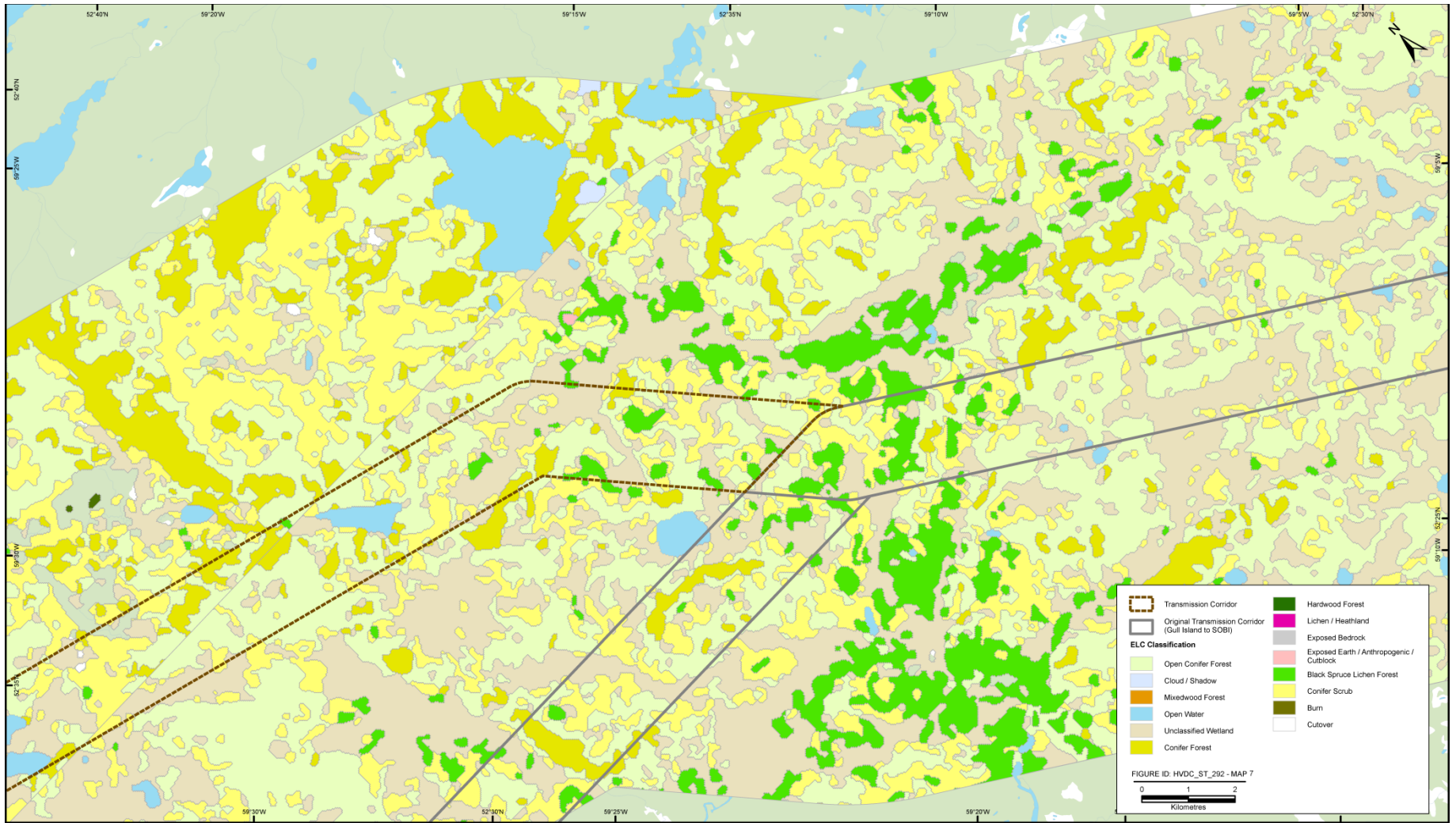
MAP 5

Labrador – Island Transmission Link: Muskrat Falls Corridor Segment
Ecological Land Classification



MAP 6

Labrador – Island Transmission Link: Muskrat Falls Corridor Segment
Ecological Land Classification



MAP 7

Labrador – Island Transmission Link: Muskrat Falls Corridor Segment
Ecological Land Classification

Appendix B

Wetland Classification Map Atlas



INDEX

Labrador - Island Transmission Link: Muskrat Falls Corridor Option
Wetlands: Map Index

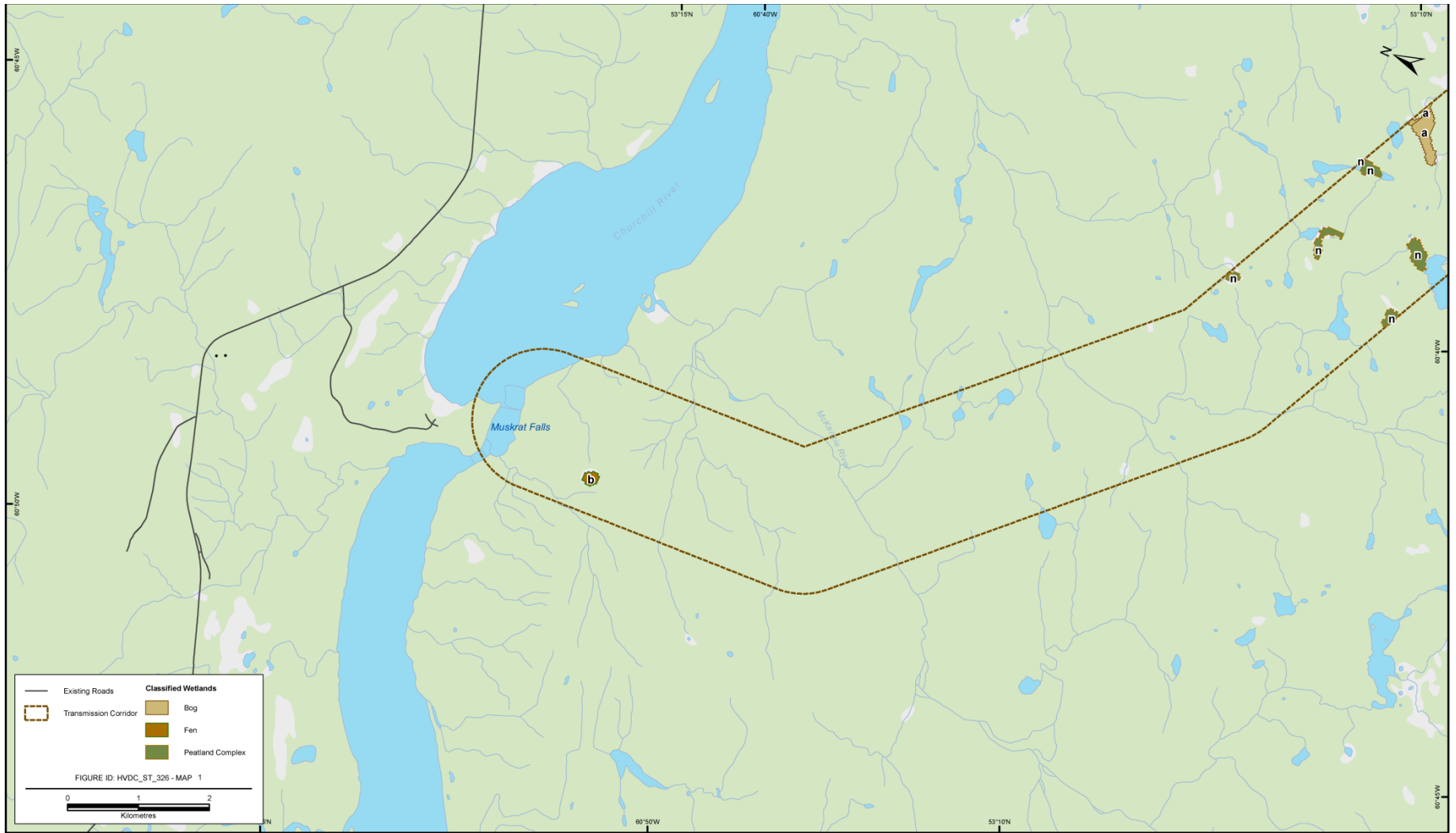


Code	Class	Form
a	Bog / Fen	Domed
b	Bog / Fen	Slope
c	Bog / Marsh	Basin
d	Bog	Plateau
e	Bog	Blanket
f	Bog / Fen	String
g	Bog / Fen	Ribbed
h	Fen	Ladder
i	Marsh	Riparian
j	Peatland Complex	Domed Bog Ladder Fen
k	Peatland Complex	Slope Bog Ribbed Fen
l	Peatland Complex	Domed Bog Ladder Fen Slope Fen
m	Peatland Complex	Domed Bog Slope Fen
n	Peatland Complex	Ribbed Fen Slope Fen
o	Peatland Complex	Domed Bog Ribbed Fen
p	Peatland Complex	Domed Bog Slope Bog
q	Peatland Complex	String Bog Slope Bog
r	Peatland Complex	String Bog Ribbed Fen
s	Peatland Complex	String Bog Slope Fen
t	Peatland Complex	Plateau Bog Slope Bog
u	Peatland Complex	Plateau Bog String Bog
v	Peatland Complex	Plateau Bog Slope Fen
w	Peatland Complex	Plateau Bog Ribbed Fen
x	Peatland Complex	Raised Bog Slope Fen



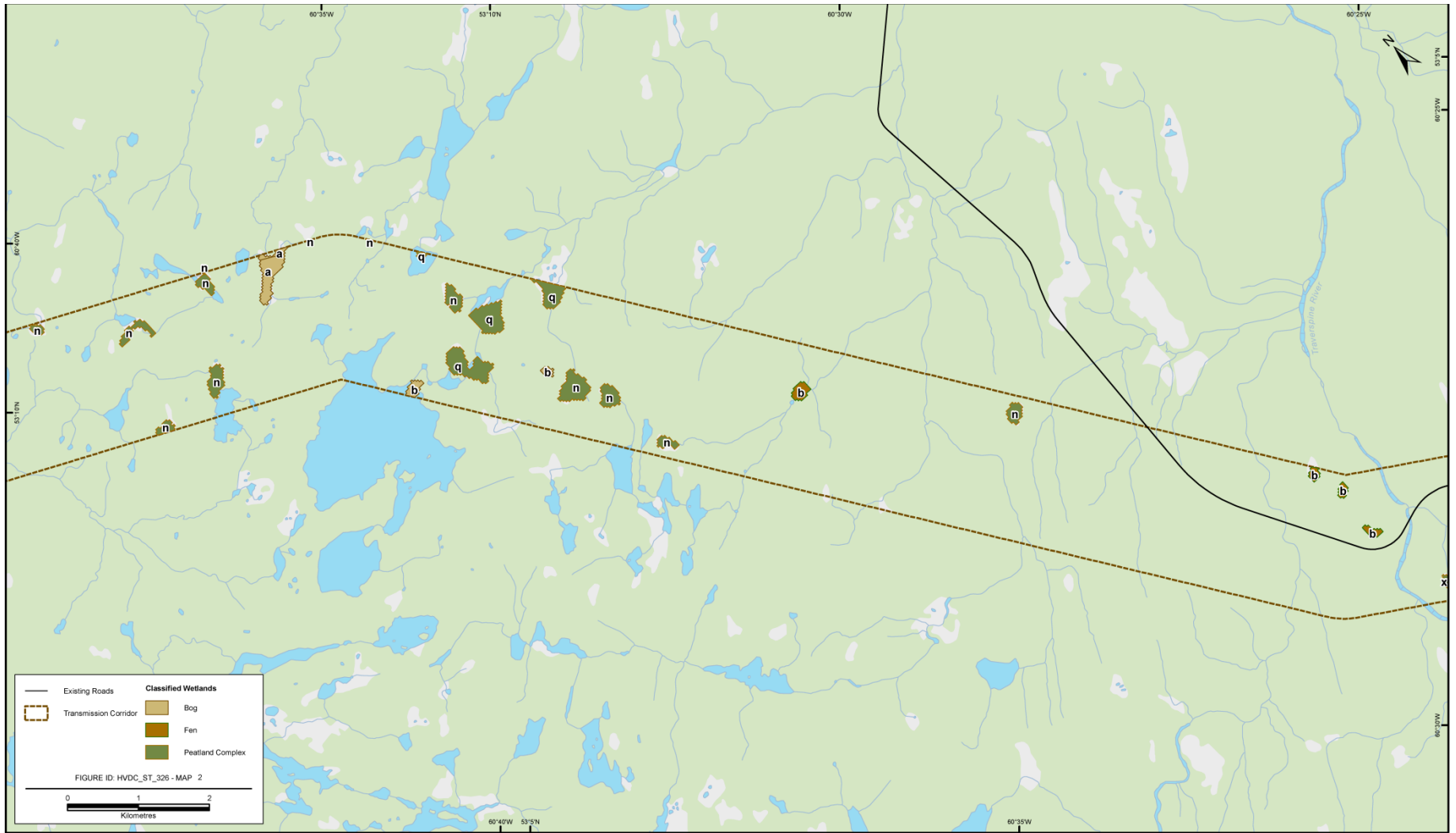
APPENDIX B - LEGEND

**Labrador – Island Transmission Link:
Wetland Classification**



MAP 1

Labrador - Island Transmission Link: Muskrat Falls Corridor Segment
Wetlands

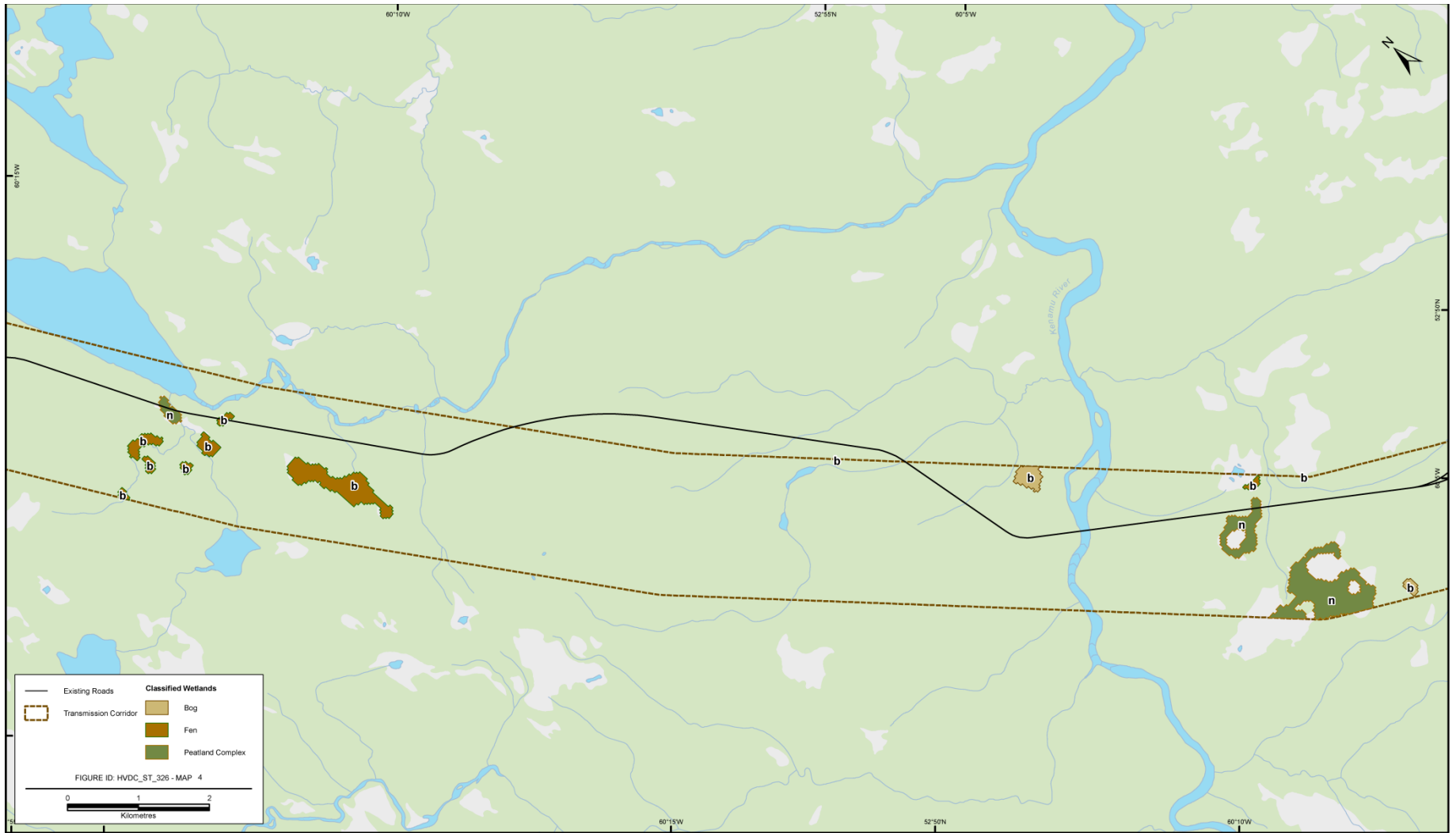


MAP 2
Labrador - Island Transmission Link: Muskrat Falls Corridor Segment
Wetlands

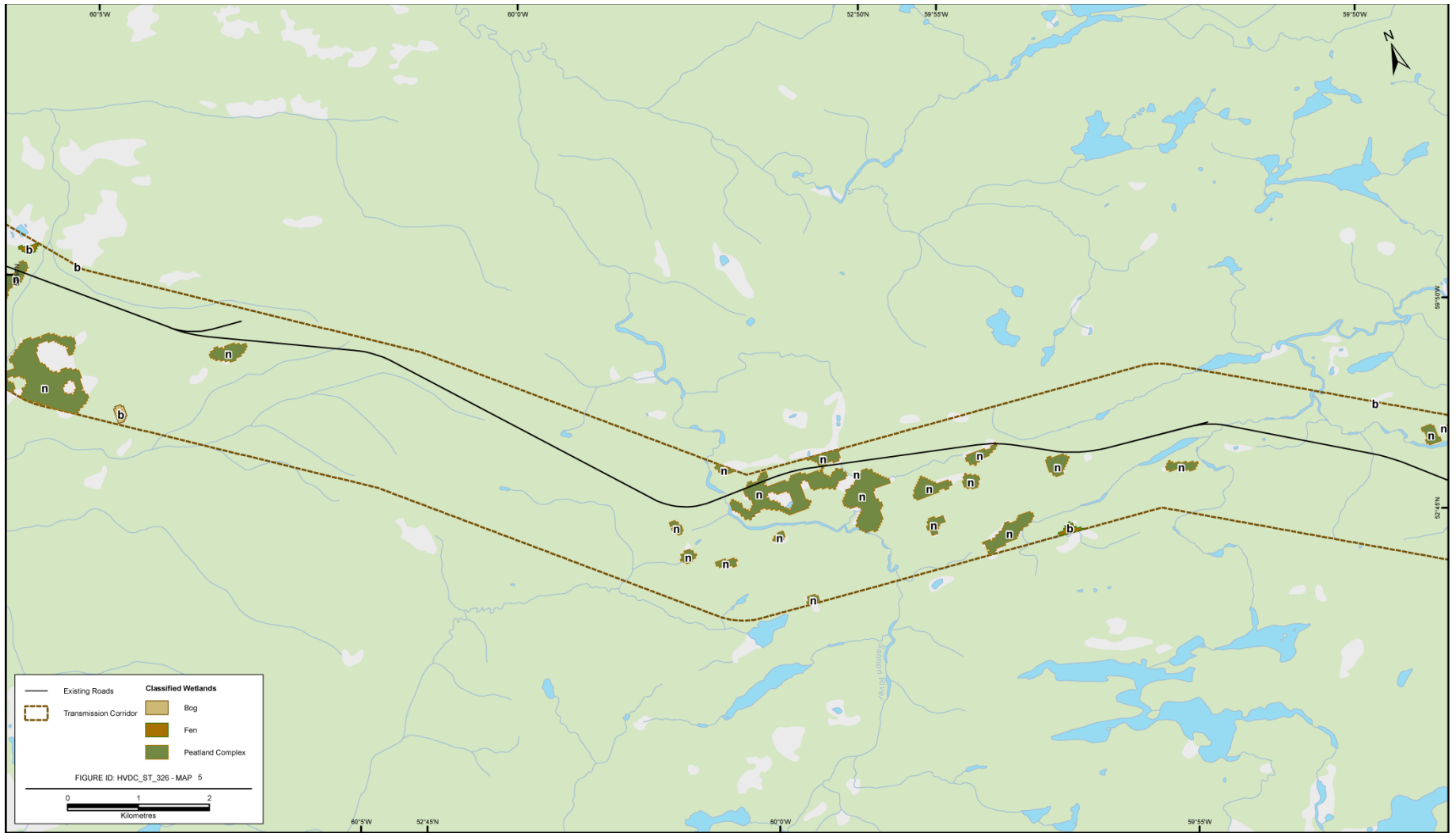


MAP 3

Labrador - Island Transmission Link: Muskrat Falls Corridor Segment
Wetlands

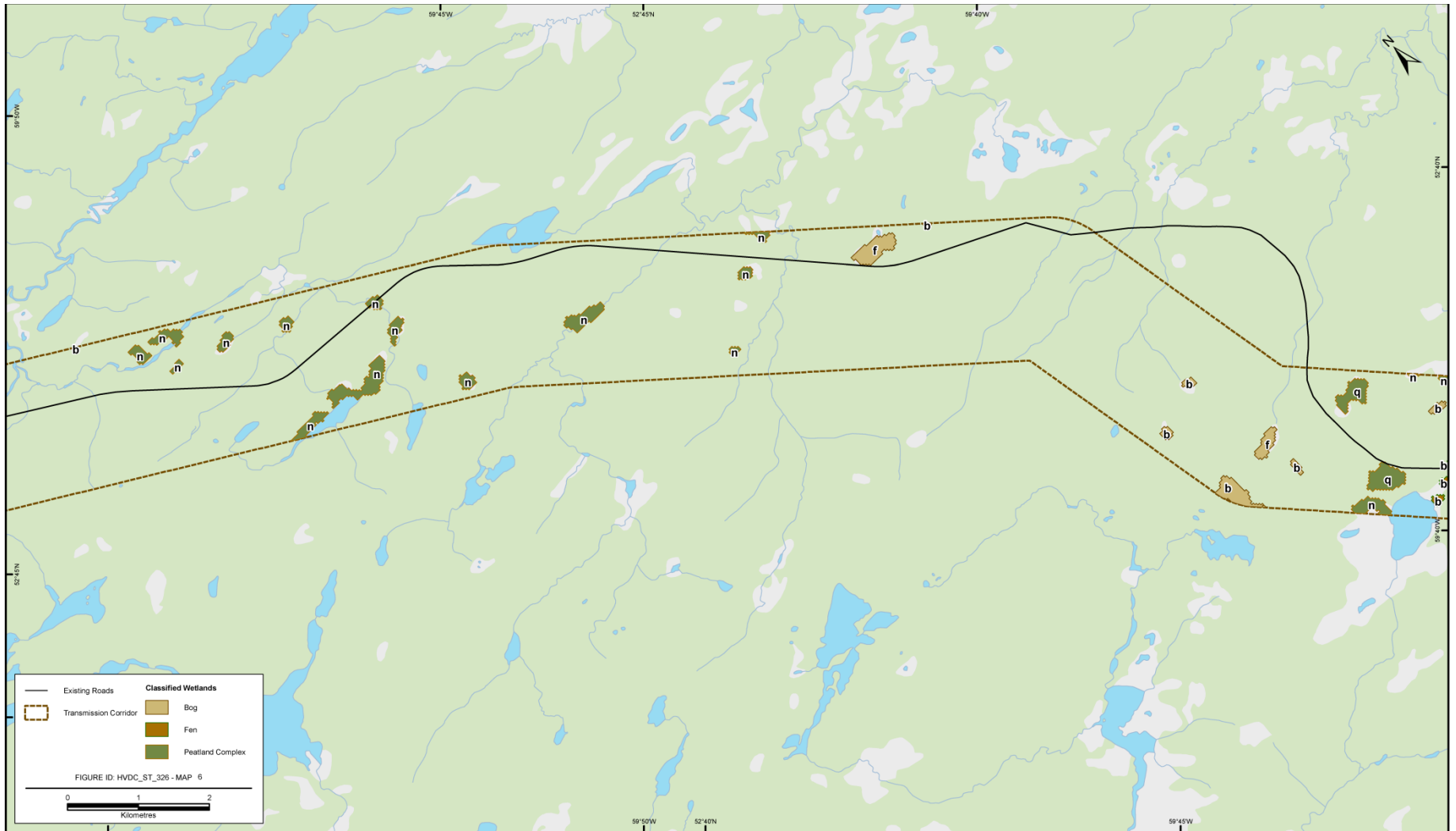


MAP 4
Labrador - Island Transmission Link: Muskrat Falls Corridor Segment
Wetlands



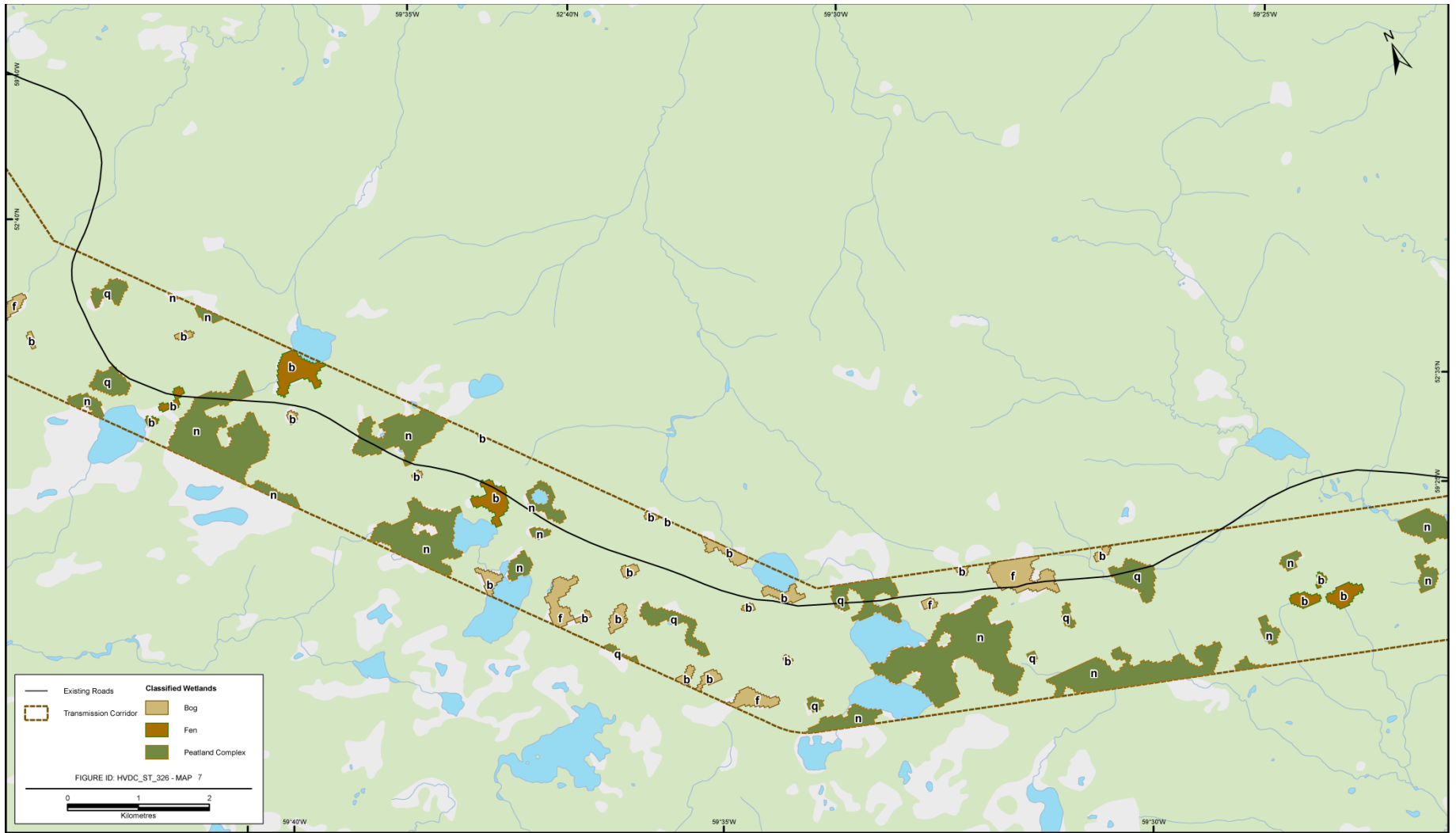
MAP 5

Labrador - Island Transmission Link: Muskrat Falls Corridor Segment
Wetlands

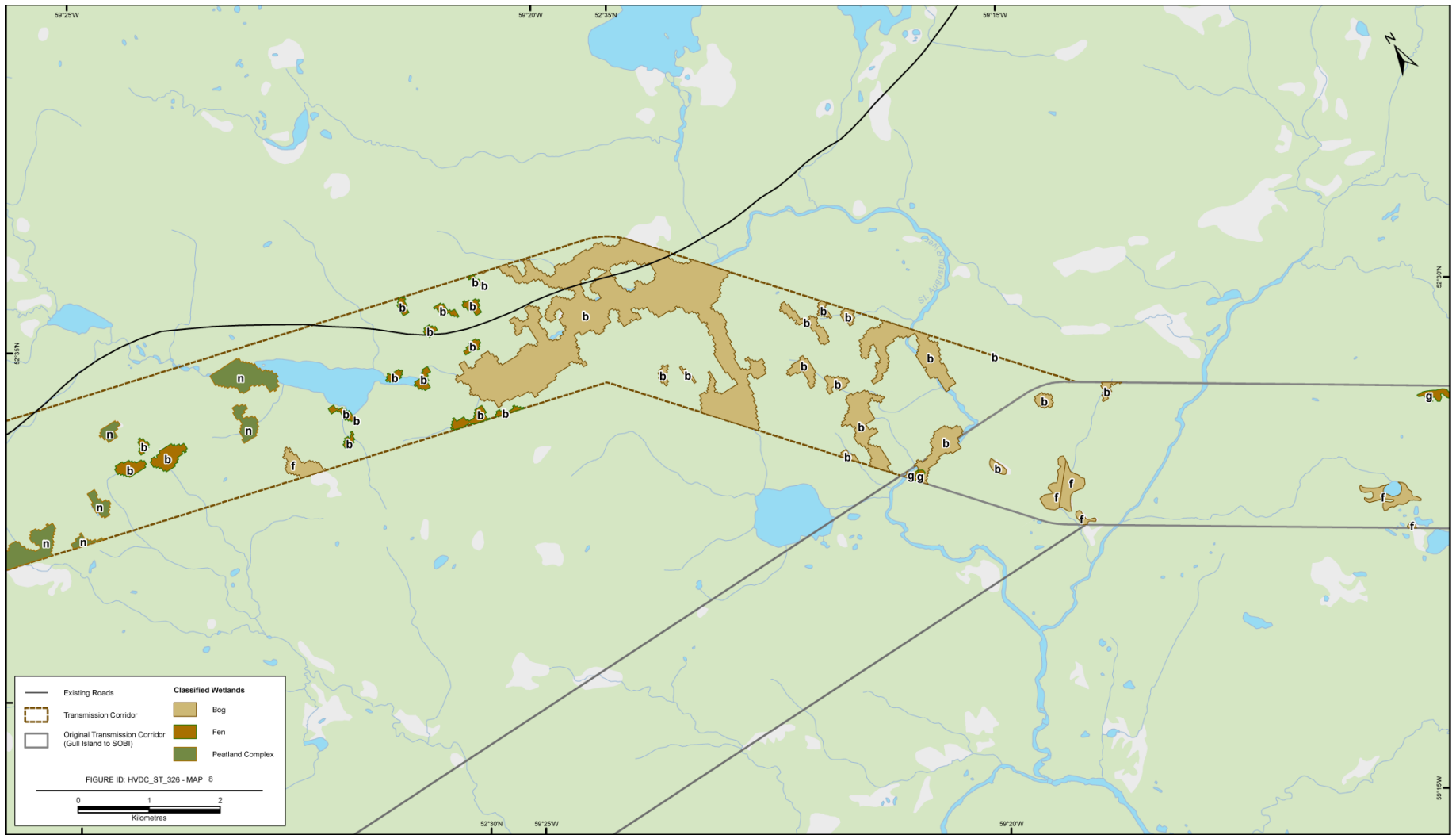


MAP 6

Labrador - Island Transmission Link: Muskrat Falls Corridor Segment
Wetlands



MAP 7
Labrador - Island Transmission Link: Muskrat Falls Corridor Segment
Wetlands



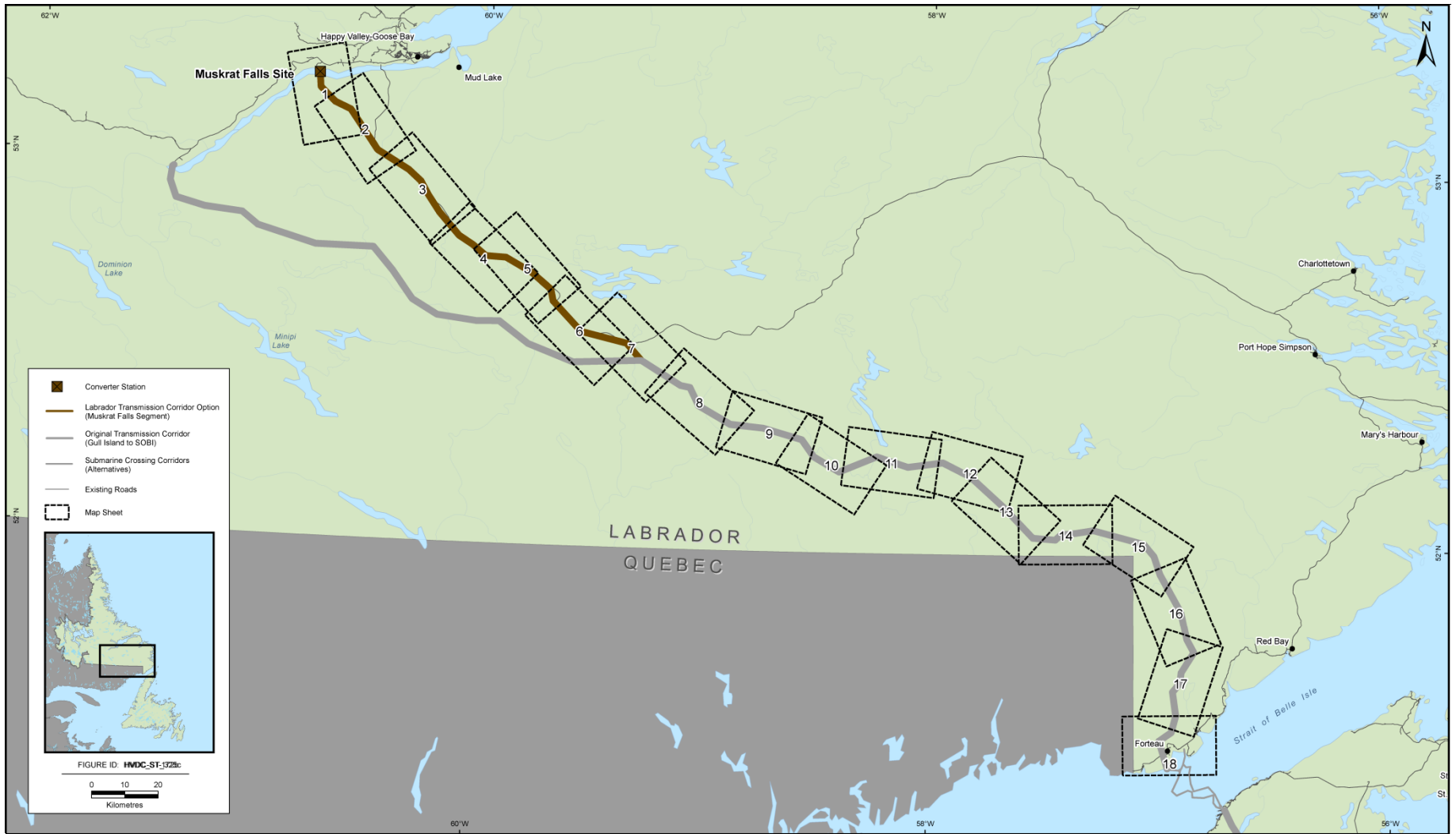
MAP 8
Labrador - Island Transmission Link: Muskrat Falls Corridor Segment
Wetlands

Appendix C

Regionally Uncommon Plant Potential Model Map Atlas

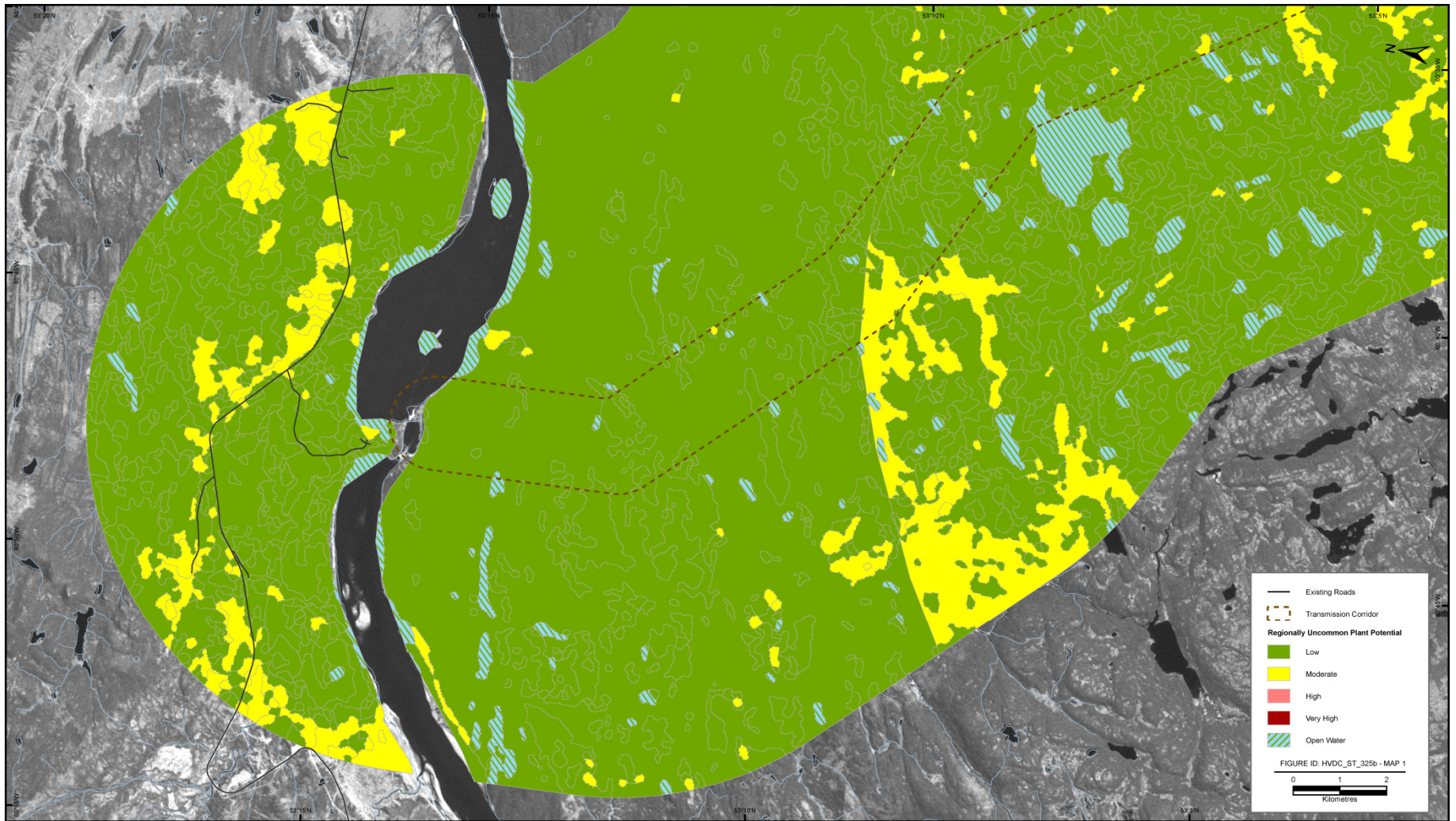
Scientific Name	Common Name	Preferred Habitat	ELC Habitat Types																			Sub-Units						
			BE	BEc	LH	LHc	BL	BLc	OF	OFc	CS	CSc	CF	CFc	MF	MFc	HF	HFc	WL	WLc	BU	BUc	RS	RSc	LP	LPc	SS	SSc
<i>Dryopteris filix-mas</i>	male fern	Dense mixed and deciduous woods with calcareous or basic substrates of limestone or dolomite; on talus slopes with exposed boulders and gravels				•									•		•											
<i>Equisetum palustre</i>	marsh horsetail	Riparian marsh, floodplain swamps																										
<i>Erigeron elatus</i>	angular fleabane	Open limestone barrens, esp. with exposed gravels		•		•																						
<i>Gentiana propinqua</i>	fourpart dwarf gentian	Turfy limestone barrens				•																						
<i>Hedysarum alpinum</i>	alpine sweetvetch	Crevises and cliffs in limestone bedrock. Usually restricted to calcareous or basic substrates, such as limestone barrens or dolomite				•																						
<i>Oxytropis deflexa</i> var. <i>foliolosa</i>	pendantpod oxytrope	Coastal limestone barrens, exposed to somewhat turfy sites				•																						
<i>Ranunculus pensylvanicus</i>	bristly crowfoot	Stream banks, bogs, moist clearings; depressions in open forests						•											•				•					
<i>Sagina nodosa</i> subsp. <i>borealis</i>	knotted pearlwort	Frost boils in coastal limestone barrens; tops of limestone ridges				•																	•					
<i>Streptopus lanceolatus</i> var. <i>lanceolatus</i>	rose mandarin	Rich moist coniferous and deciduous woods											•		•	•	•											
<i>Valeriana dioica</i> subsp. <i>sylvatica</i>	northern valerian	Turfy limestone barrens				•																						
		TOTALS	0	5	0	14	0	1	0	0	0	0	1	1	2	2	2	6	1	0	0	0	5	0	1	0	0	0

ELC Habitat Units:
BE = Exposed Bedrock; LH = Lichen Heathland; BL = Black Spruce Lichen; OF = Open Conifer Forest; CS = Conifer Scrub; CF = Conifer Forest; MF = Mixedwood Forest; HW = Hardwood Forest; WL = Wetland; BU = Burned Area
Other Units:
RS = River / Stream; LP = Lake / Pond; SS = Seaside
"•" after a habitat unit code denotes calcareous or basic substrate



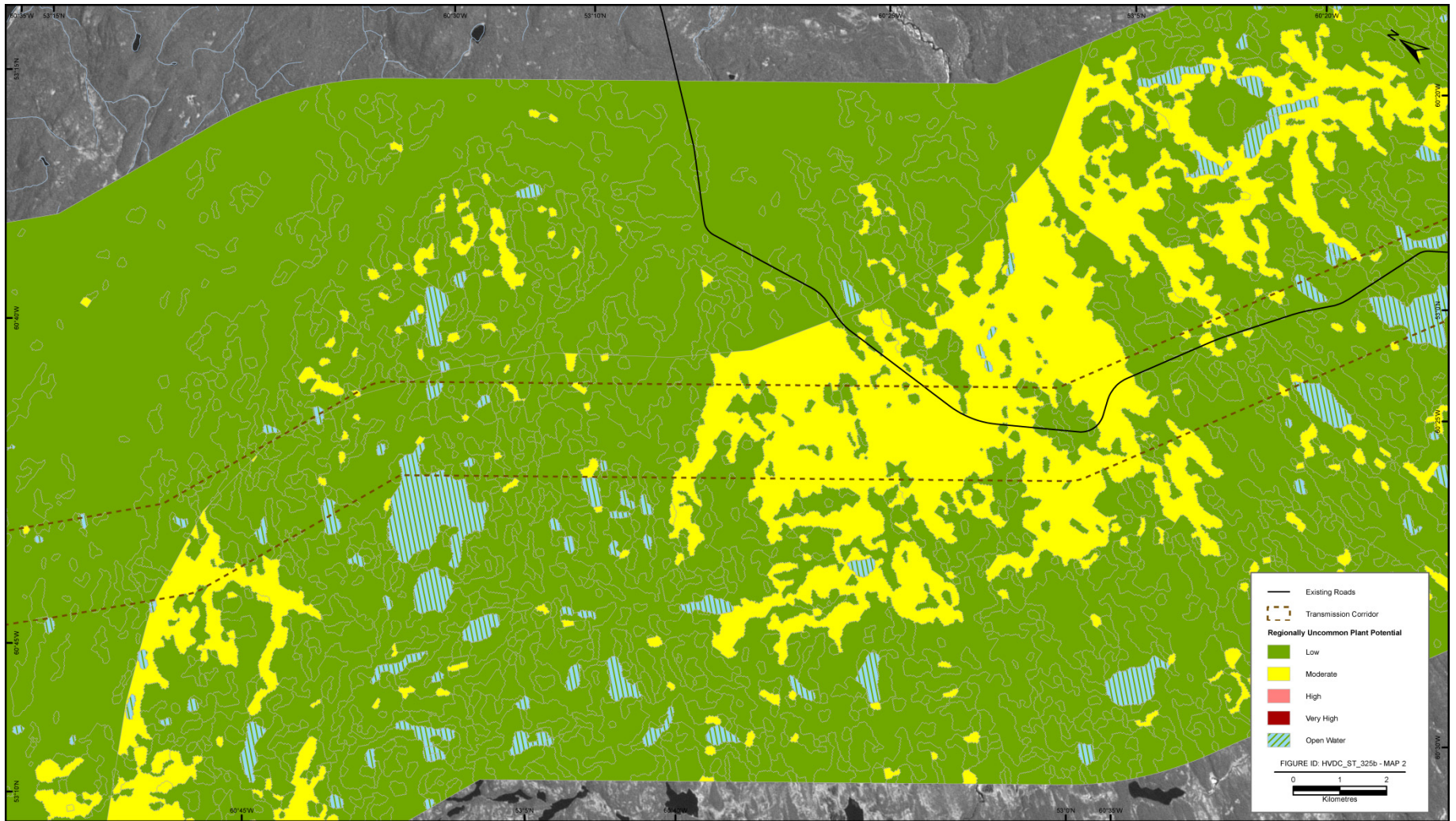
INDEX

**Labrador - Island Transmission Link: Muskrat Falls Corridor Option
Regionally Uncommon Plant Potential: Map Index**



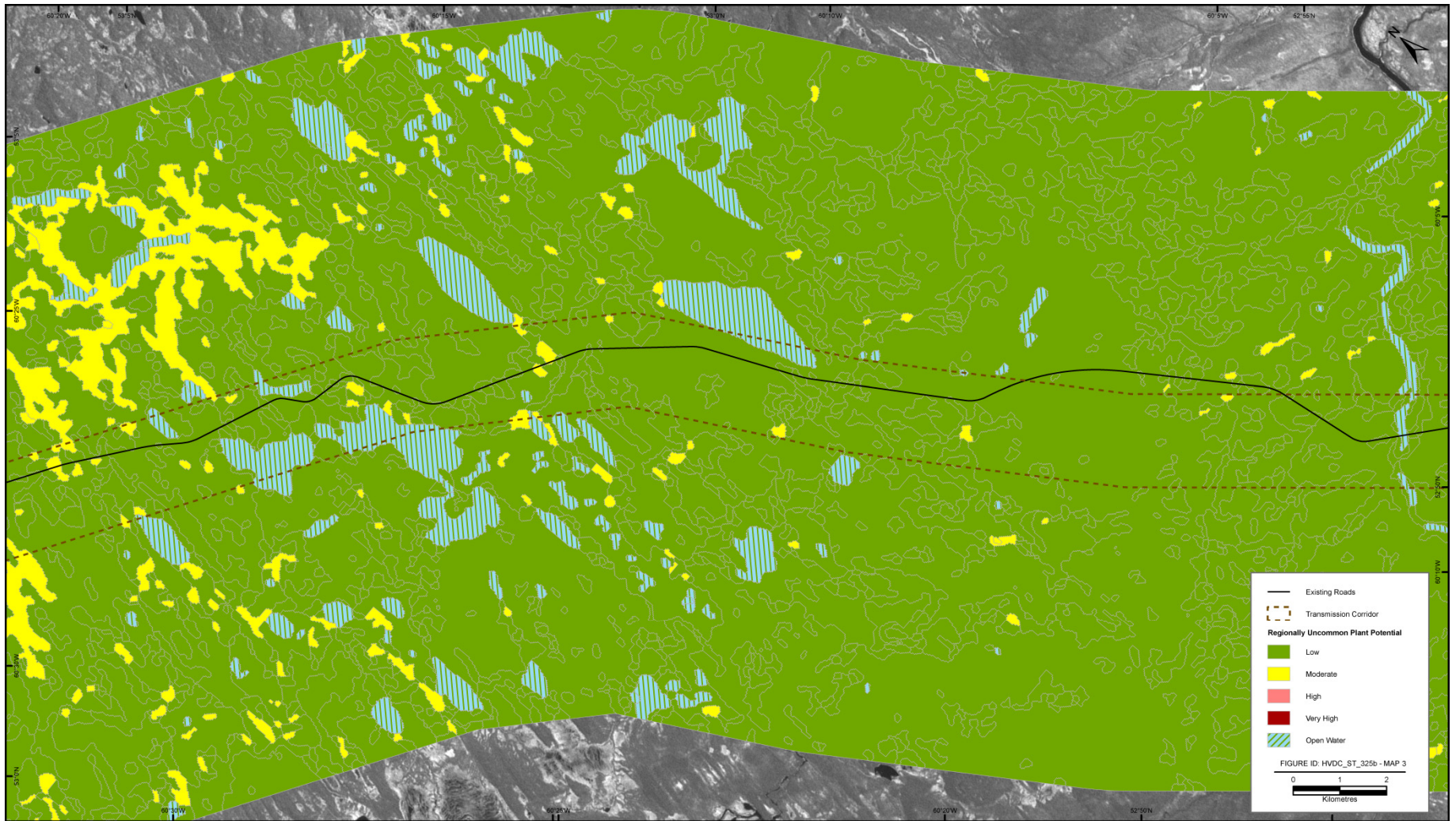
MAP 1

Labrador – Island Transmission Link: Muskrat Falls Corridor Segment
Regionally Uncommon Plant Potential



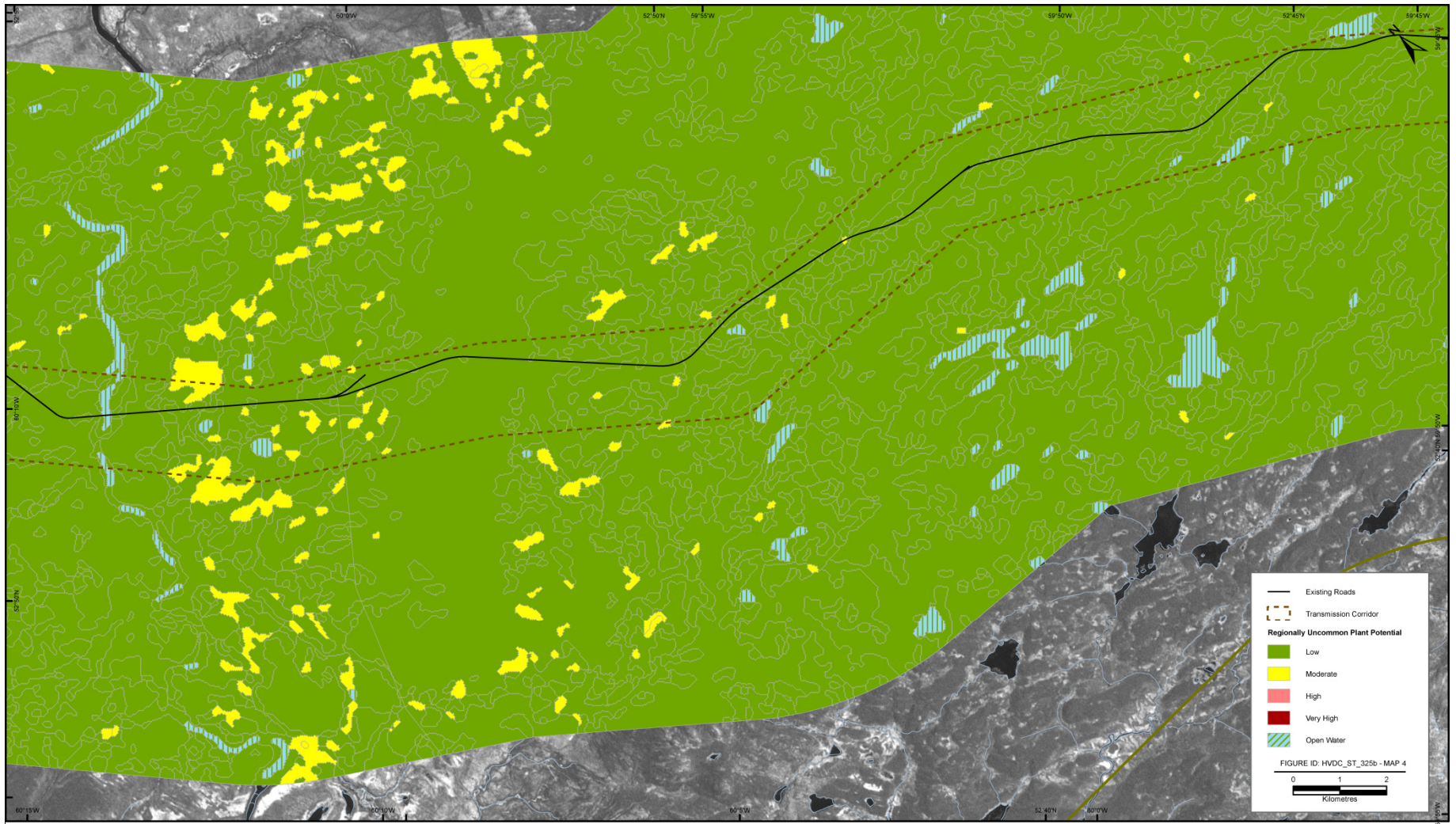
MAP 2

Labrador – Island Transmission Link: Muskrat Falls Corridor Segment
Regionally Uncommon Plant Potential



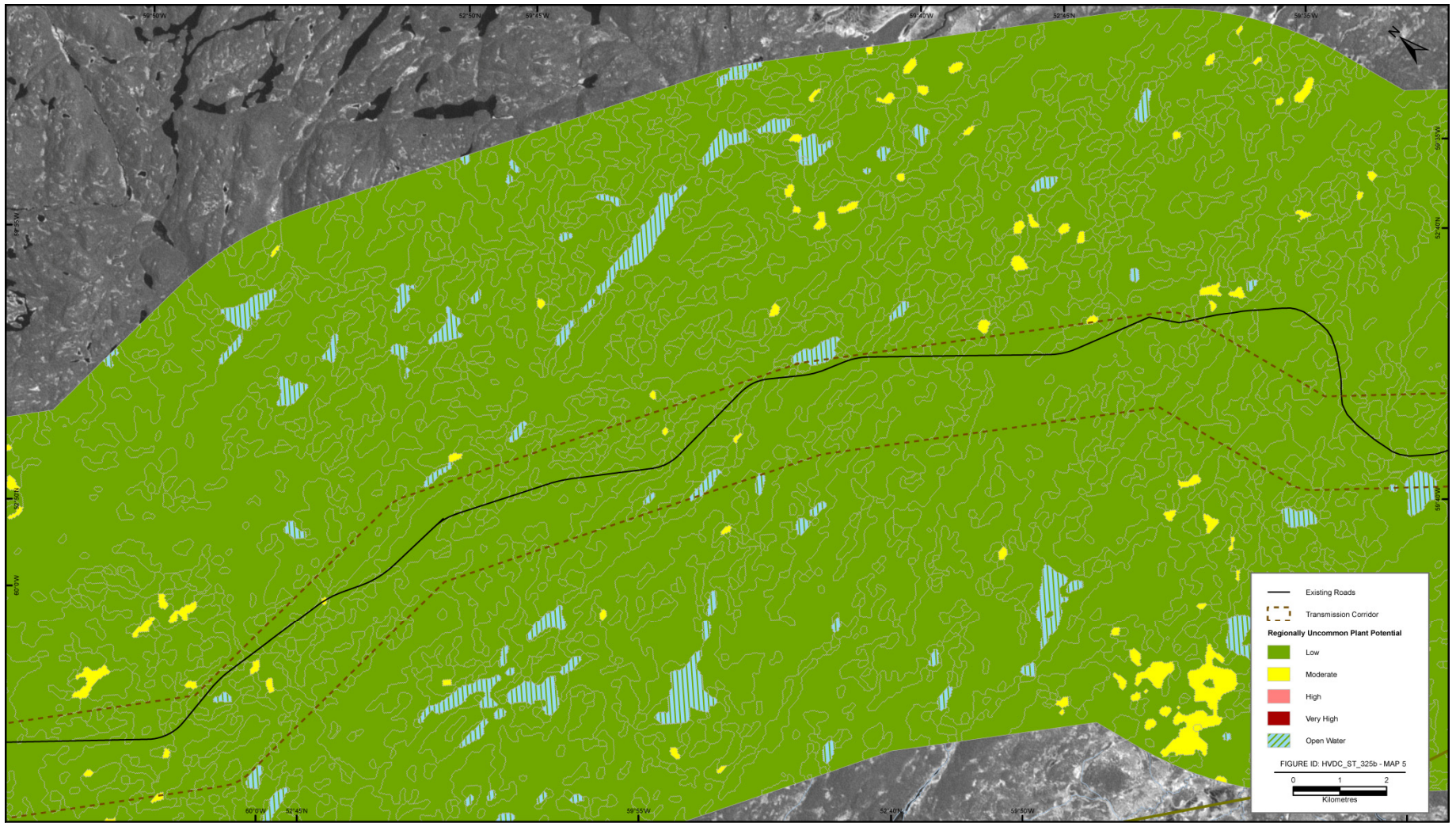
MAP 3

Labrador – Island Transmission Link: Muskrat Falls Corridor Segment
Regionally Uncommon Plant Potential



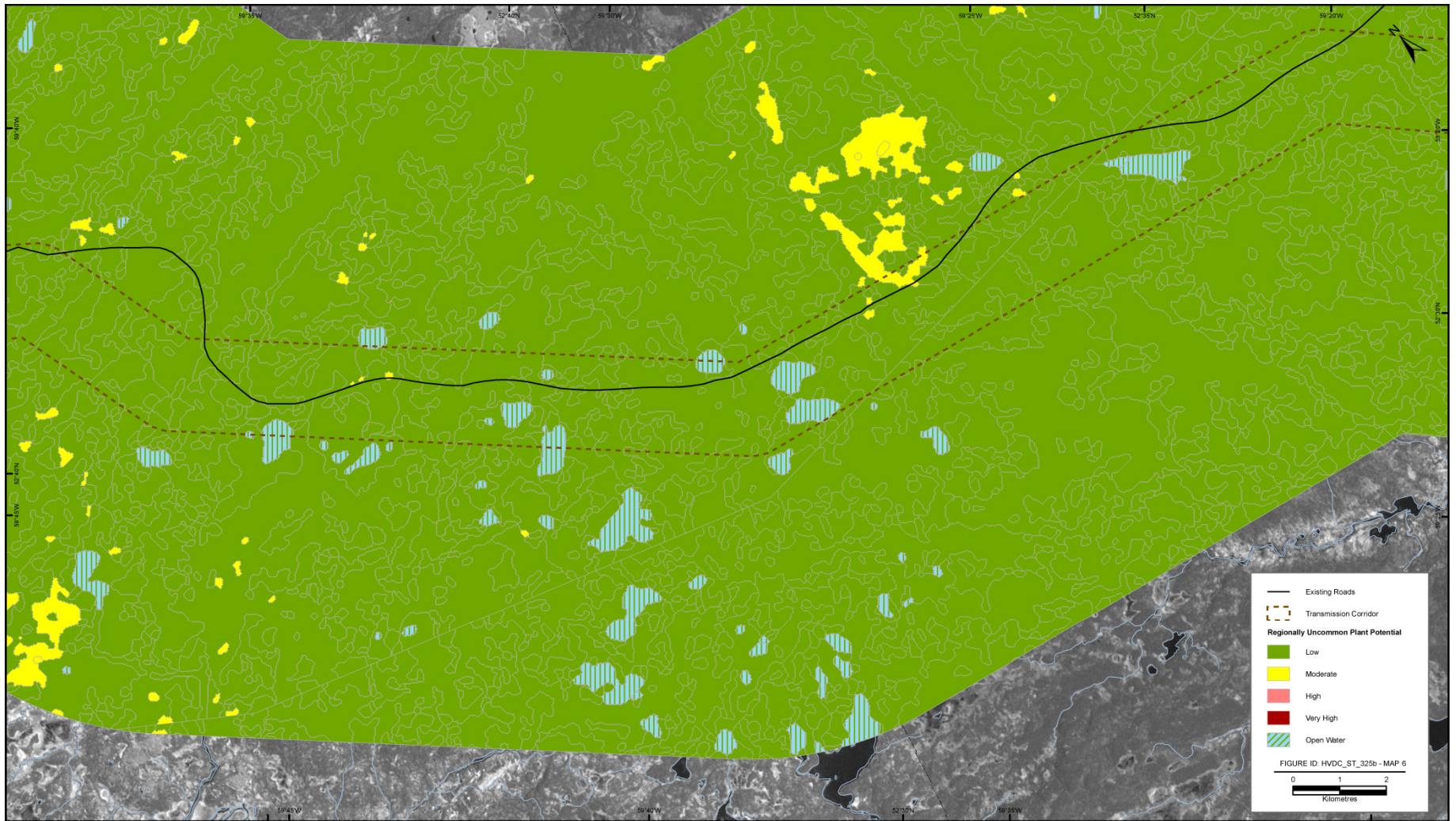
MAP 4

Labrador – Island Transmission Link: Muskrat Falls Corridor Segment
Regionally Uncommon Plant Potential



MAP 5

Labrador – Island Transmission Link: Muskrat Falls Corridor Segment
Regionally Uncommon Plant Potential



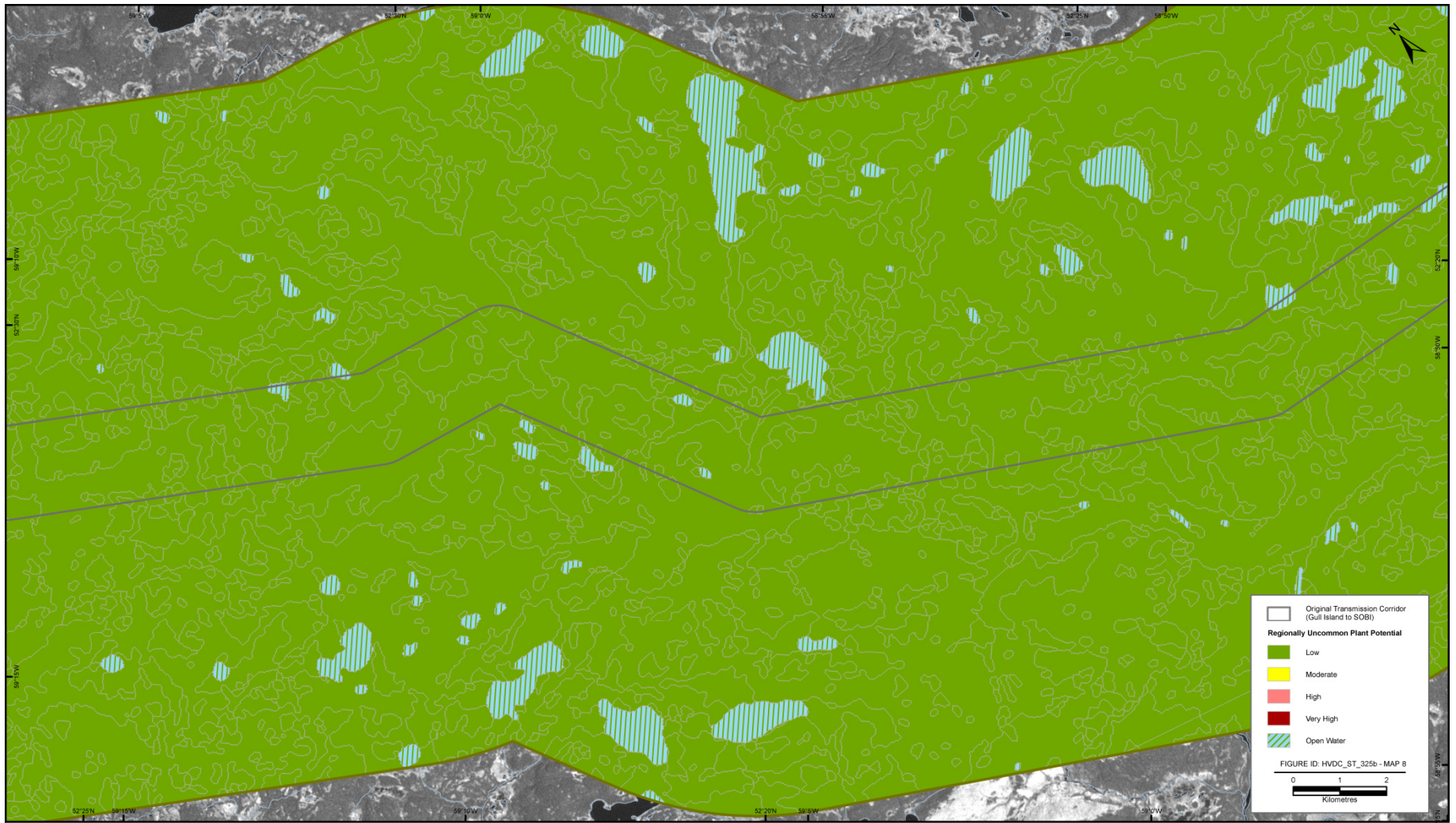
MAP 6

Labrador – Island Transmission Link: Ecological Land Classification



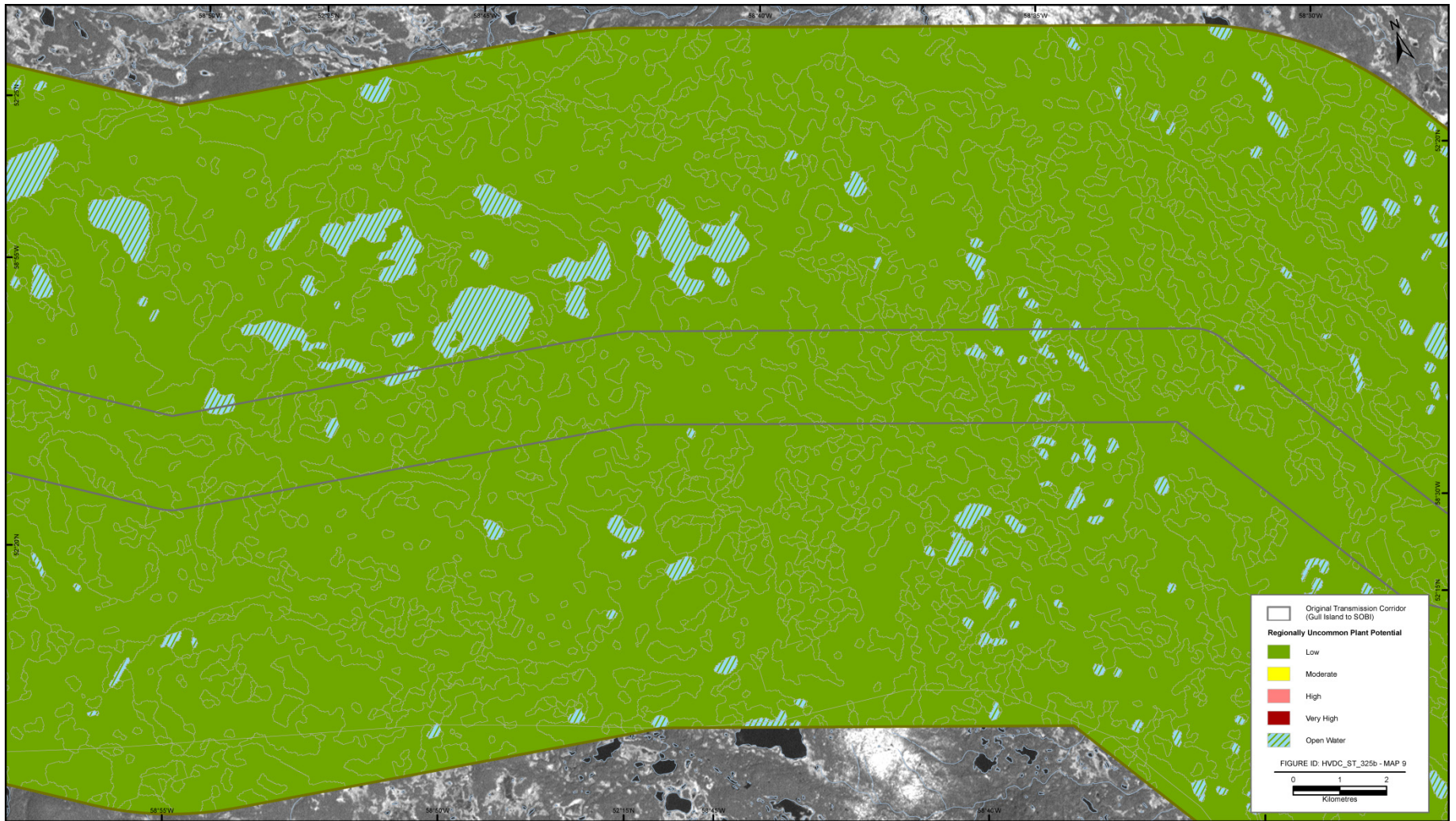
MAP 7

Labrador – Island Transmission Link: Ecological Land Classification



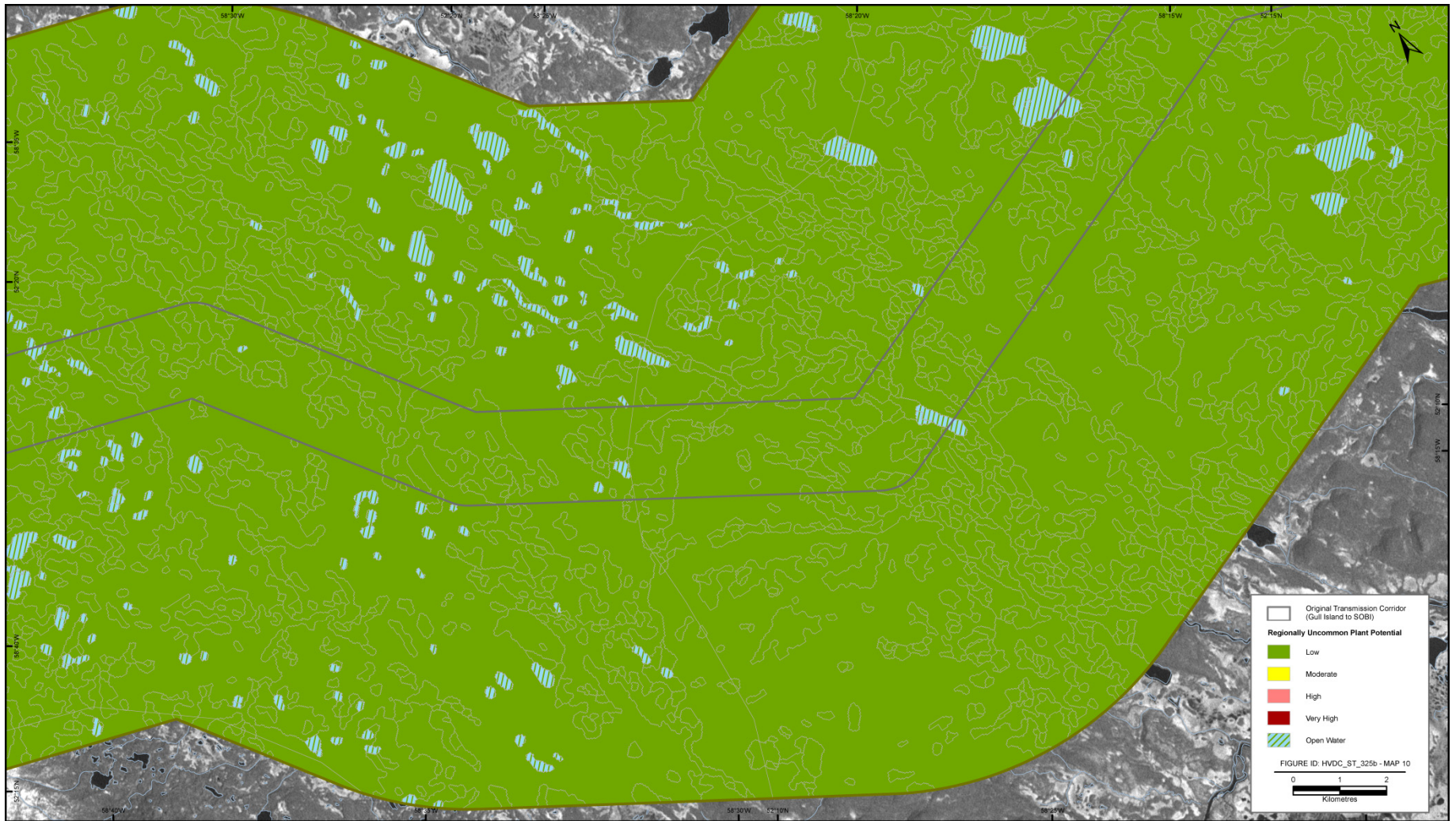
MAP 8

Labrador – Island Transmission Link: Muskrat Falls Corridor Segment
Regionally Uncommon Plant Potential



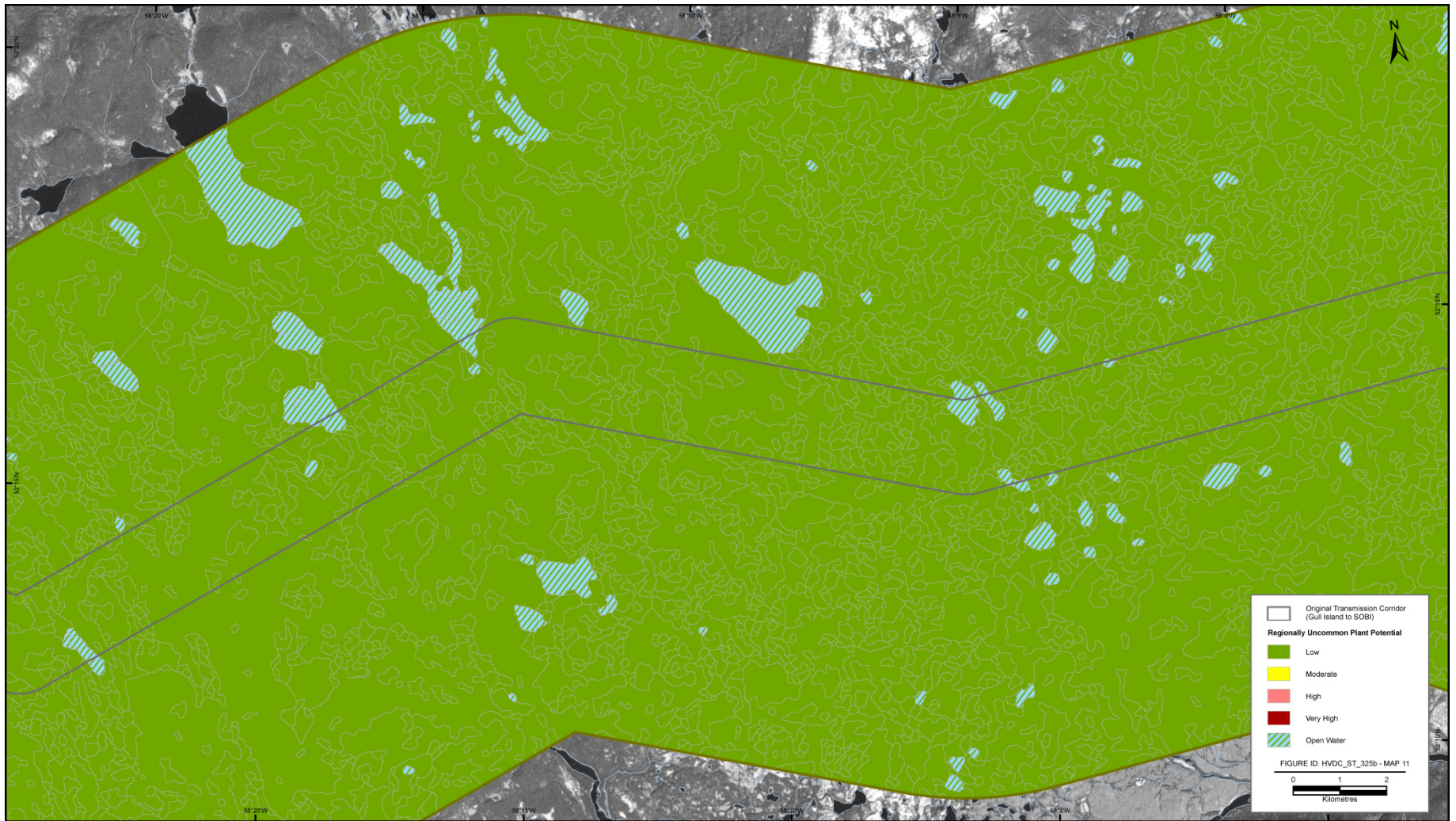
MAP 9

Labrador – Island Transmission Link: Muskrat Falls Corridor Segment
Regionally Uncommon Plant Potential



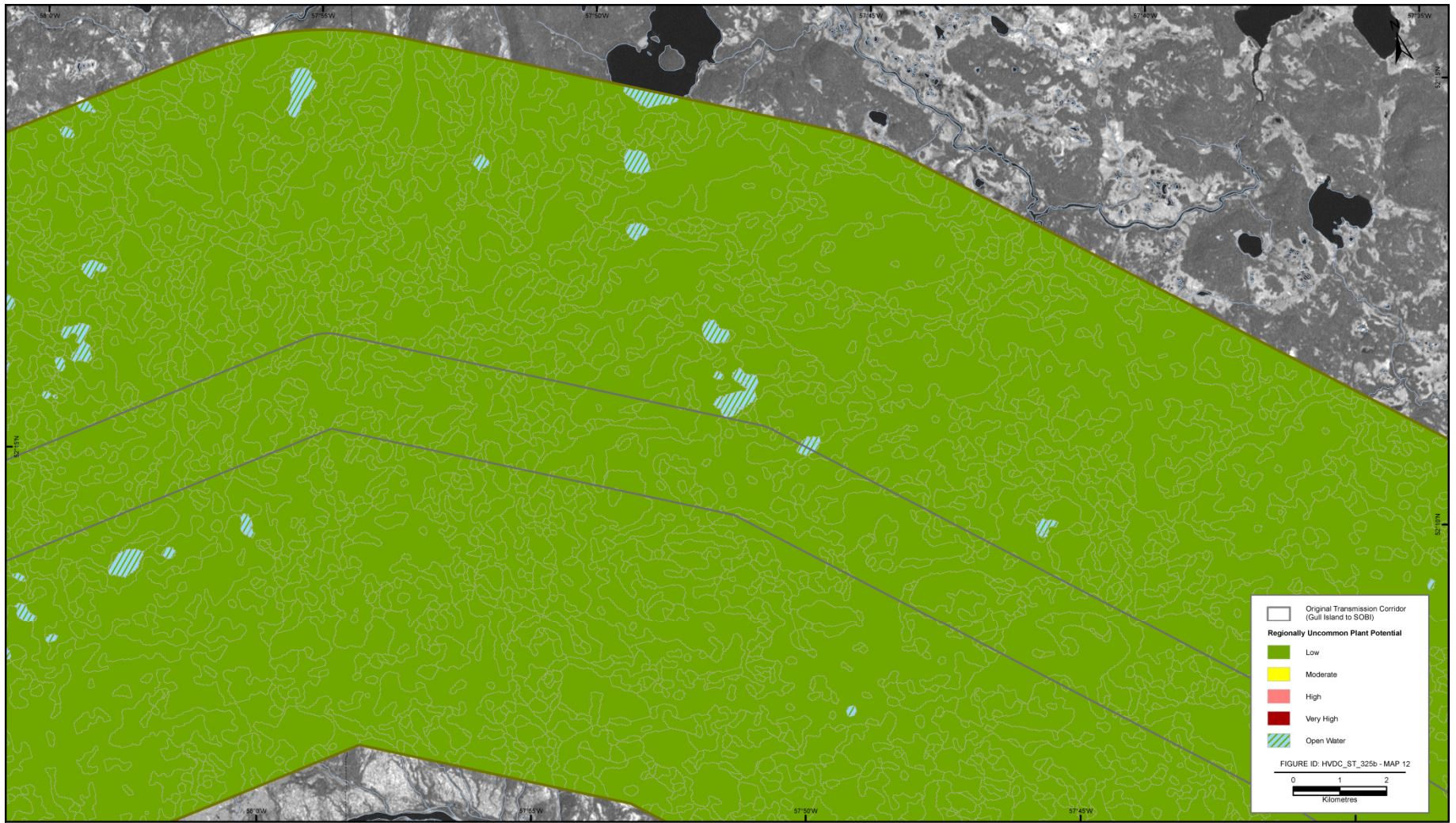
MAP 10

Labrador – Island Transmission Link: Muskrat Falls Corridor Segment
Regionally Uncommon Plant Potential



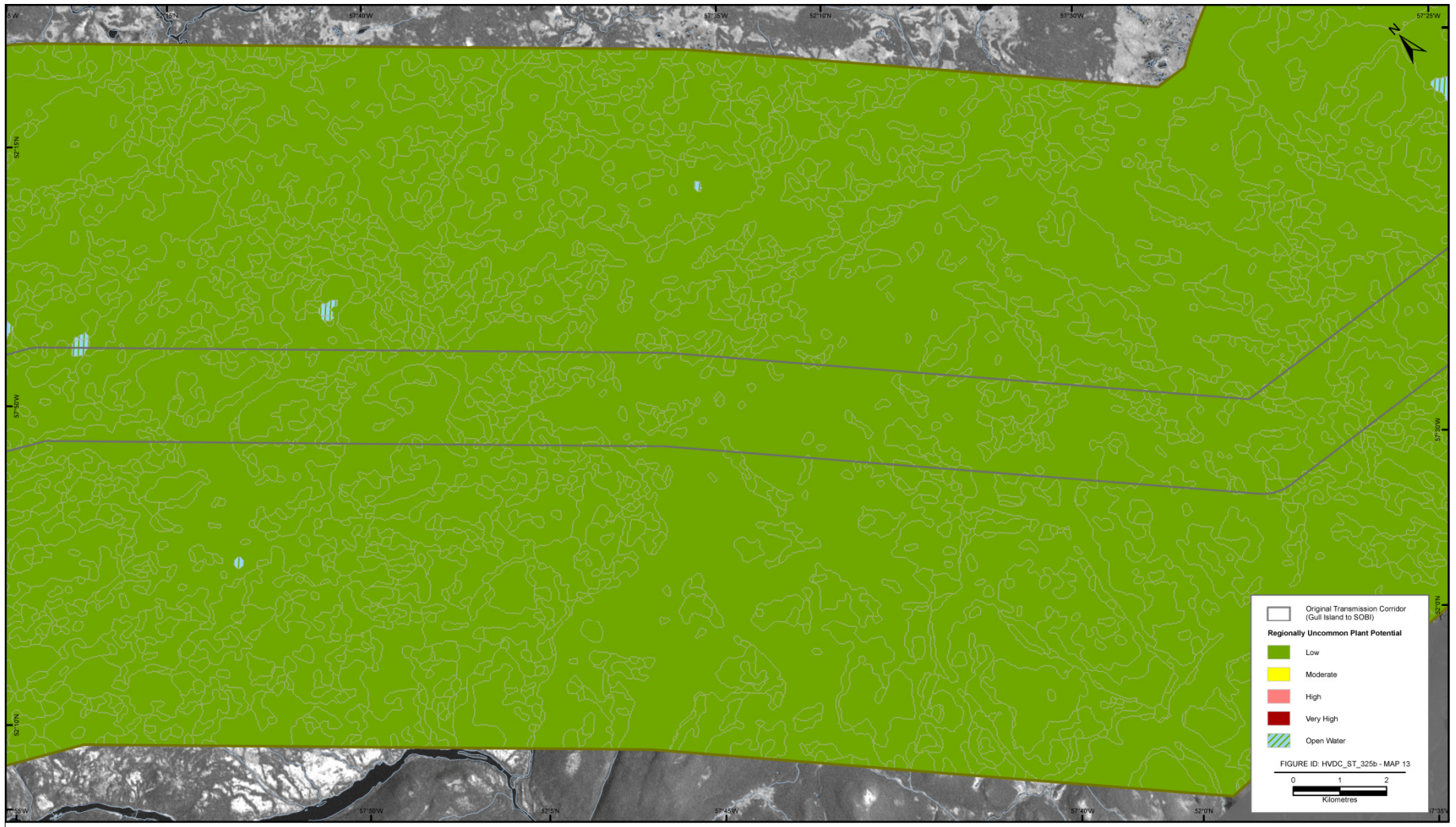
MAP 11

Labrador – Island Transmission Link: Muskrat Falls Corridor Segment
Regionally Uncommon Plant Potential



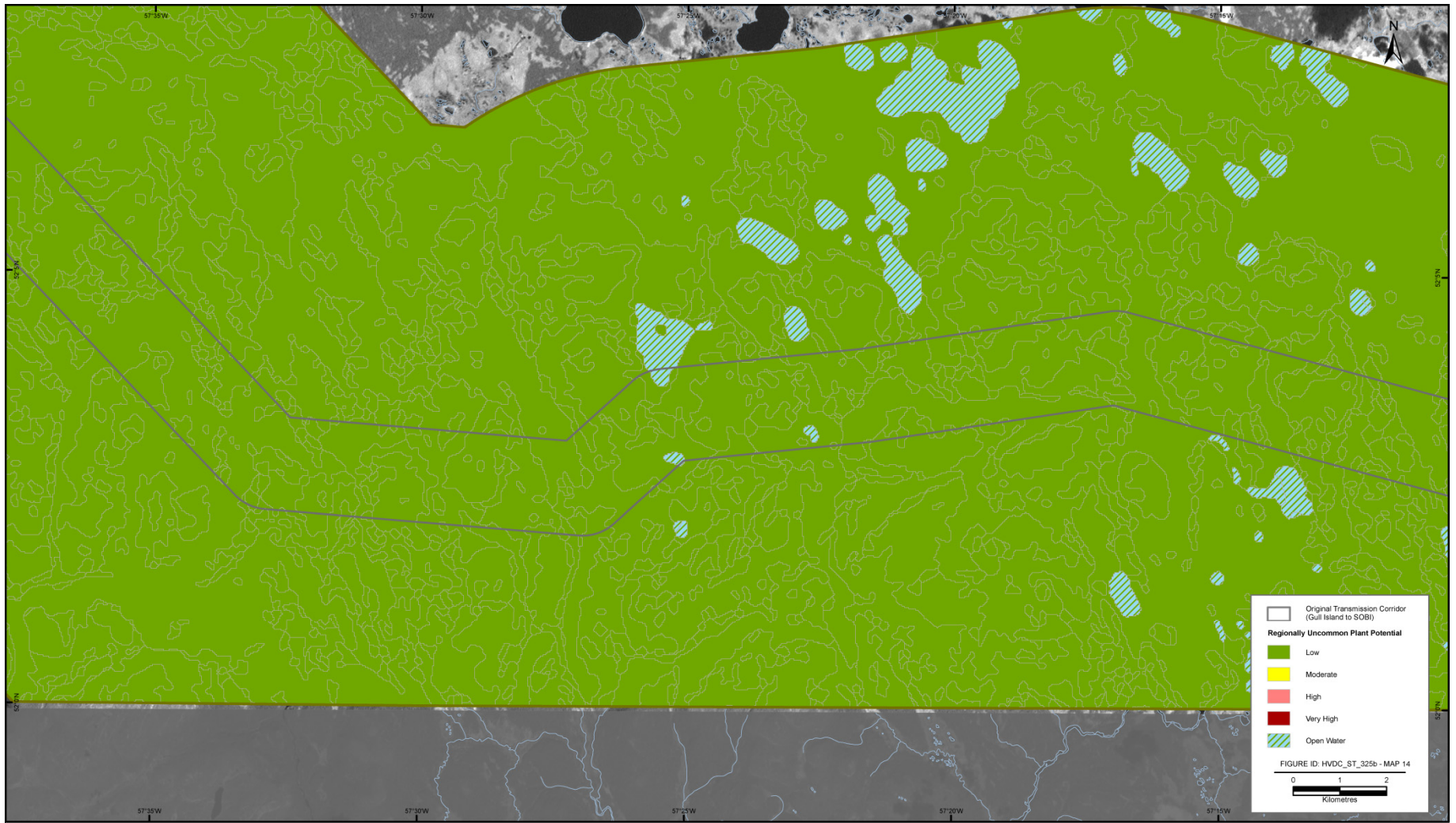
MAP 12

Labrador – Island Transmission Link: Muskrat Falls Corridor Segment
Regionally Uncommon Plant Potential



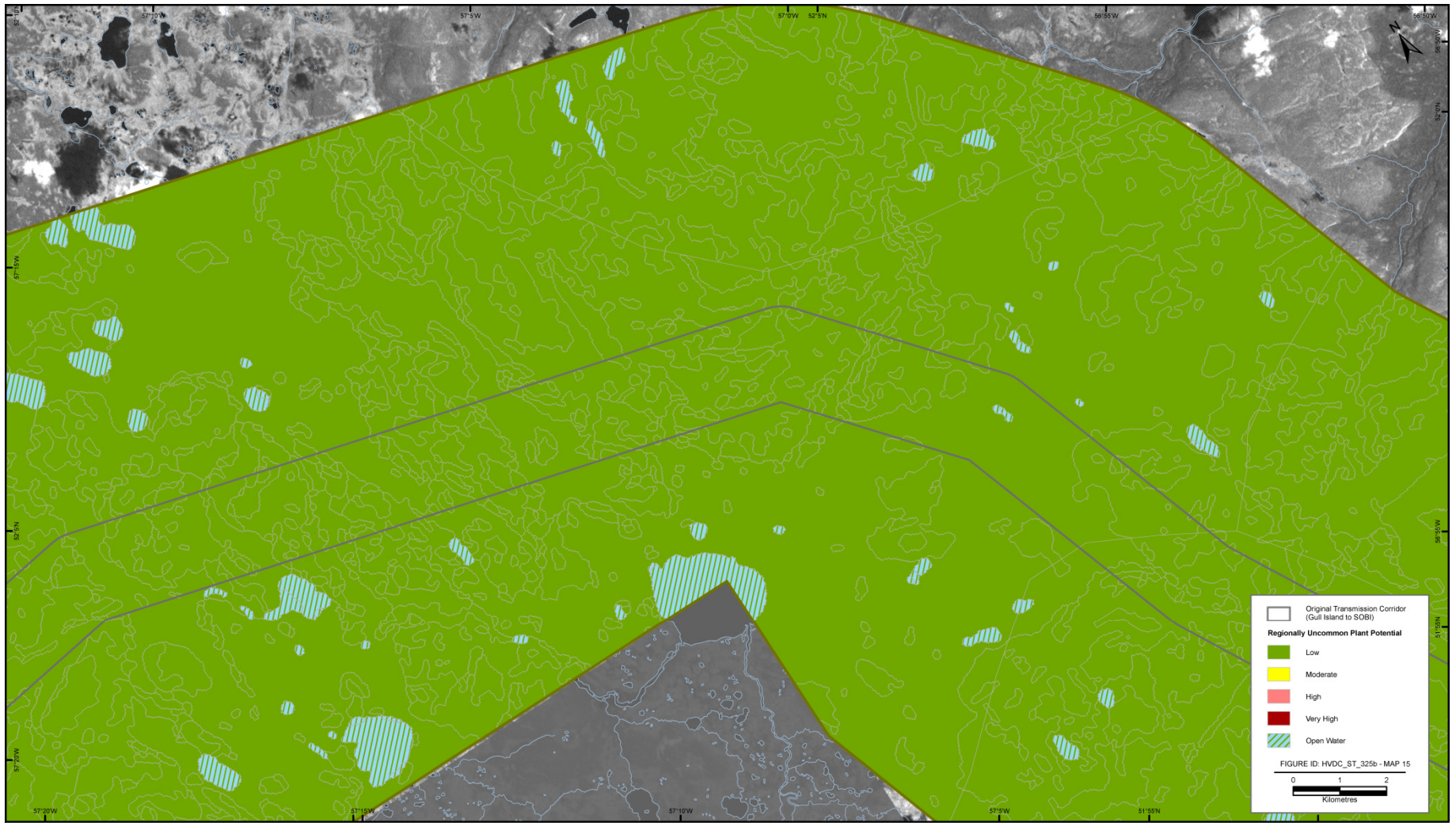
MAP 13

Labrador – Island Transmission Link: Muskrat Falls Corridor Segment
Regionally Uncommon Plant Potential



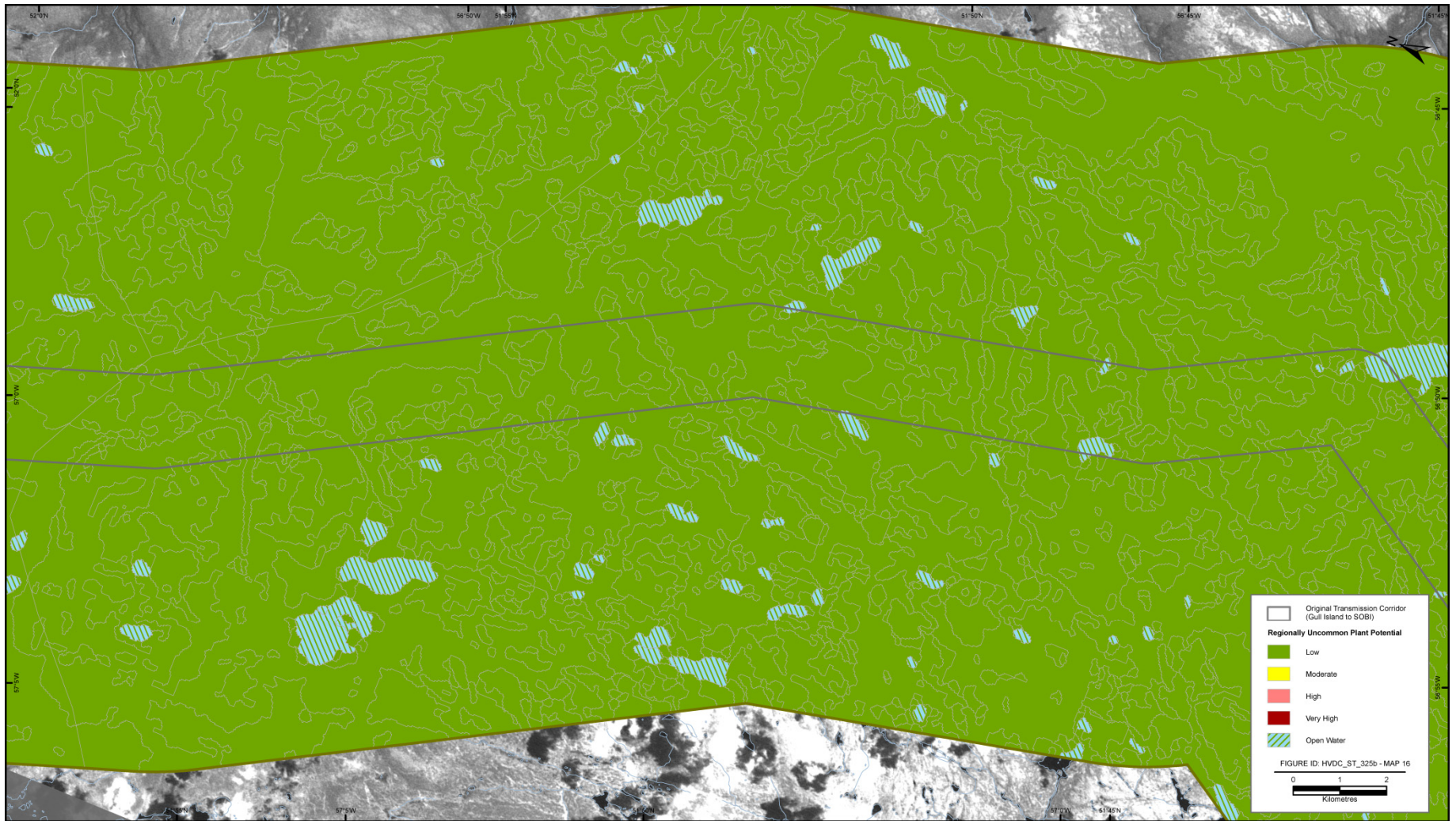
MAP 14

Labrador – Island Transmission Link: Muskrat Falls Corridor Segment
Regionally Uncommon Plant Potential



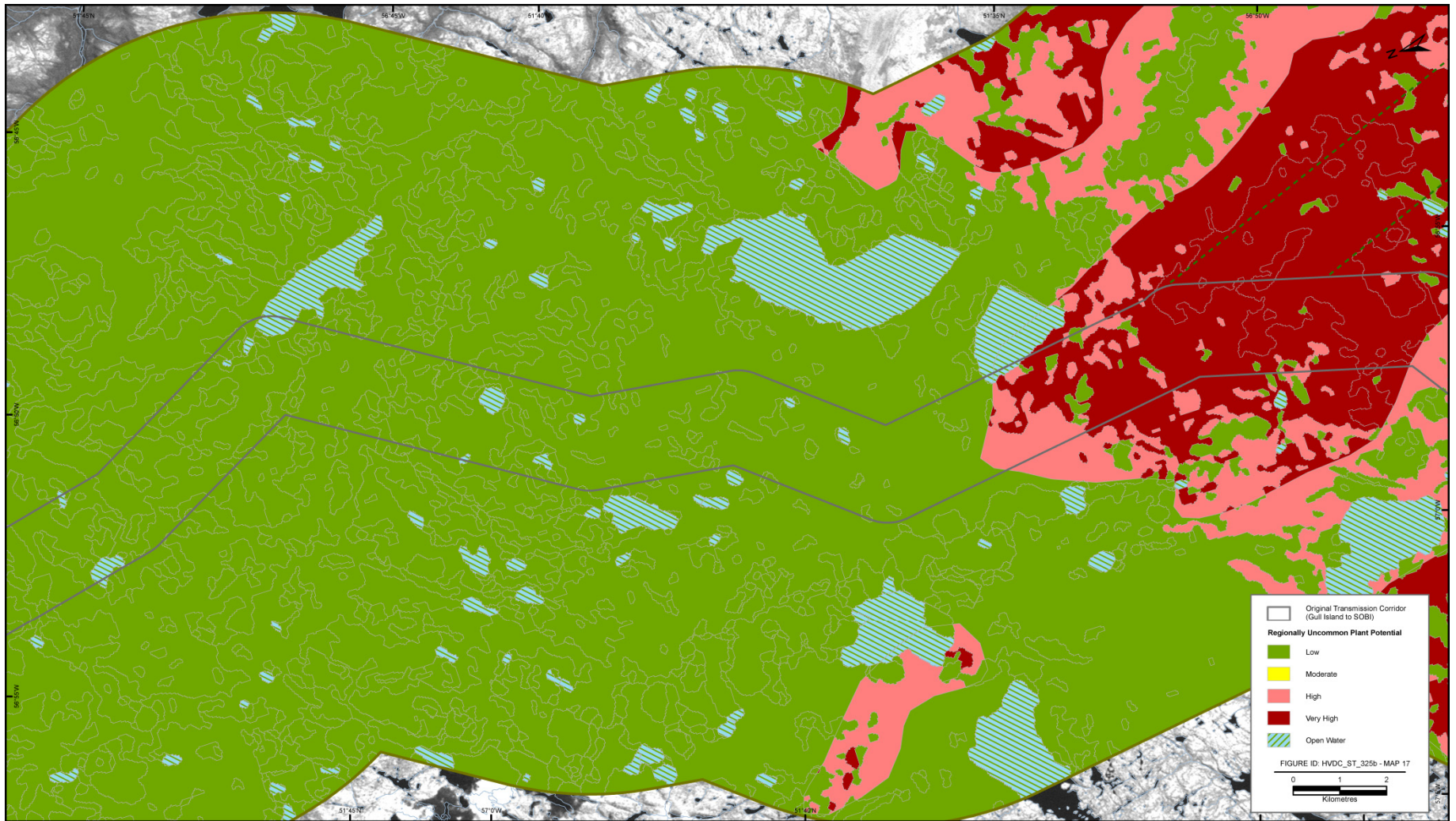
MAP 15

Labrador – Island Transmission Link: Muskrat Falls Corridor Segment
Regionally Uncommon Plant Potential



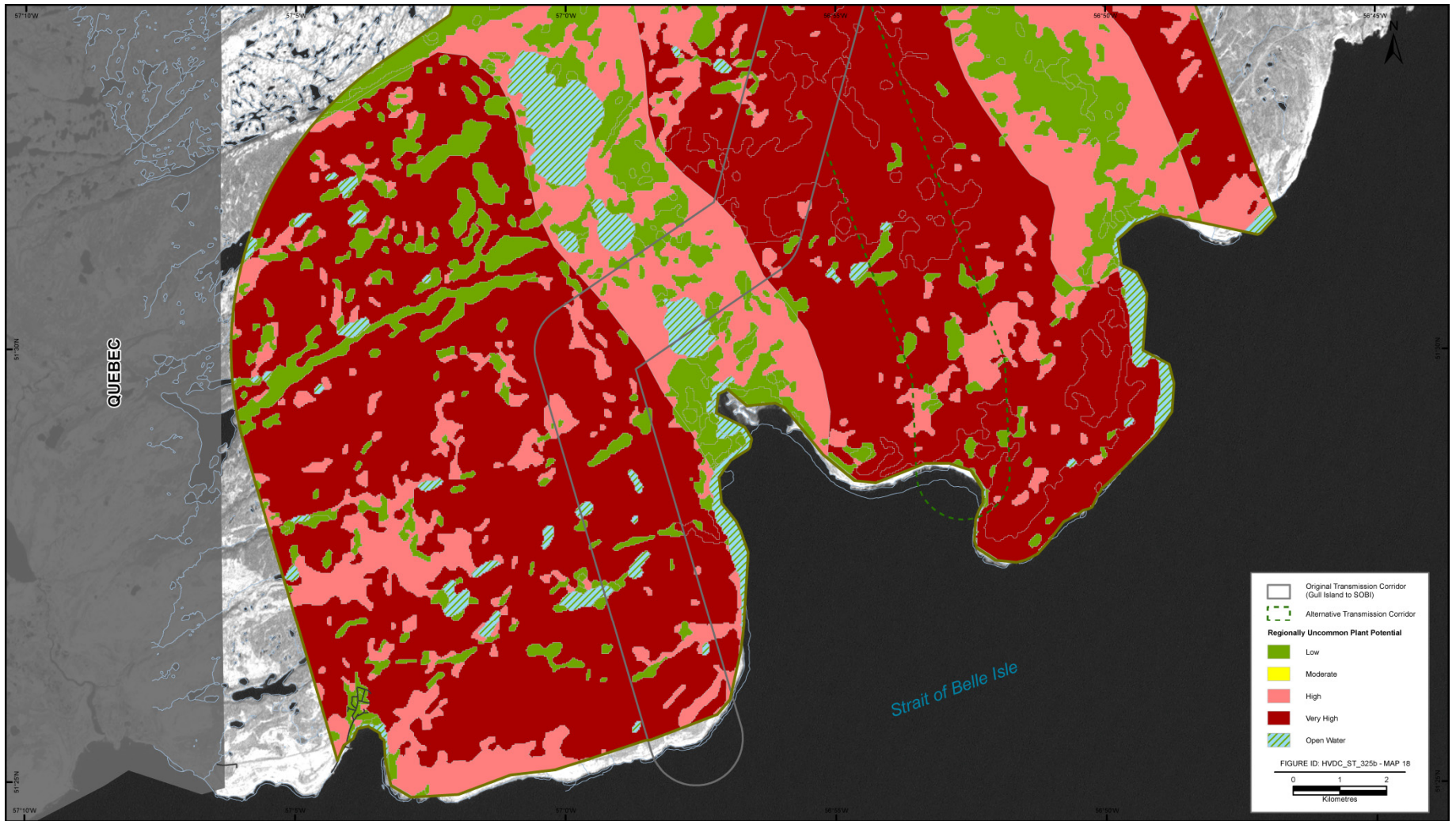
MAP 16

Labrador – Island Transmission Link: Muskrat Falls Corridor Segment
Regionally Uncommon Plant Potential



MAP 17

Labrador – Island Transmission Link: Muskrat Falls Corridor Segment
Regionally Uncommon Plant Potential



MAP 18

Labrador – Island Transmission Link: Muskrat Falls Corridor Segment
Regionally Uncommon Plant Potential