

ATTACHMENT 2
(REGISTRATION DOCUMENT)

**REGISTRATION
PURSUANT TO SECTION 6 OF
THE ENVIRONMENTAL ASSESSMENT ACT**

NAME OF UNDERTAKING:

International Appalachian Trail Newfoundland & Labrador (IATNL)

PROPONENT:

International Appalachian Trail Newfoundland & Labrador Chapter Inc.

Address:

P.O. Box 38
Corner Brook, NL
A2H 6C3

Chief Executive Officer:

Paul Wylezol
Chairperson
302-14 Beothuck Crescent
Corner Brook, NL,
A2H 6A6
Ph. 709-634-7407

Contact Person:

Paul Wylezol
Chairperson
302-14 Beothuck Crescent
Corner Brook, NL,
A2H 6A6
Ph. 709-634-7407



101
 102
 103

104
 105

106
 107

108
 109

110
 111

112
 113
 114

115
 116

117
 118
 119
 120
 121
 122

123
 124
 125
 126

127
 128
 129
 130

THE UNDERTAKING:

(1) To add additional trail routes to the International Appalachian Trail Newfoundland & Labrador (IATNL), which is to extend from Port aux Basques in the south to Crow Head (just east of L'Anse aux Meadows) in the north, and amend some previously approved (i.e., released from further environmental assessment) routes. See 2005 Registration #1194 and 2008 Registration #1372.

(2) The trail will be an extension of the International Appalachian Trail (IAT) which runs from Mount Katahdin, Maine through New Brunswick, the Gaspé Peninsula of Quebec, Prince Edward Island and Nova Scotia. The IAT is itself an extension of the 70+ year-old US Appalachian Trail that runs from Springer Mountain, Georgia to Mount Katahdin. Both trails are highly regarded walking/hiking trails that promote a healthy active lifestyle, as well as the tourism and adventure tourism industries.

DESCRIPTION OF THE UNDERTAKING:

(1) Geographic Location

(a) The objective of the IATNL is to develop a walking/hiking trail along the 250 million year old Appalachian mountain range (Long Range Mountains) of western Newfoundland from Port aux Basques in southwestern Newfoundland to Crow Head in the north. The proposed route will take the trail across some of Newfoundland's (and the Appalachian mountains') most scenic and geologically interesting terrain, from glacier carved fiords and pristine river valleys to coastal mountains with views of islands, headlands, and icebergs. It will also traverse the highest point on the island of Newfoundland at Cabox, Lewis Hills.

(b) The proposed IATNL will total approximately 700 kilometers of new non-contiguous walking/hiking trail connected by existing trails and roads. The over 20 new sections of trail will range in length from 1km to over 100kms, much of it over barren terrain requiring only rock cairns to mark the route.

The proposed new trail routes and amended routes are as follows, with previous EA released routes (2005 and 2008) in square brackets:

- 1.) Simms and Red Gulches: approx. 27kms. Located on the southern end of the Blow Me Down Mountains and the north side of Serpentine Lake, this trail section makes up the southern half of the Blow Me Down Mountain Trail. The route amends sections of the 2005 Released *Blomidon Mountains Trail* route (Map 5B-2005). The southern access route across Serpentine River and into Simms Gulch is amended to exit from Serpentine Logging Road, to provide better access for hikers. In addition, a loop into Red Gulch has been added to allow hikers to take a different return route

back to Serpentine Road, thus doubling the hiking experience. See Map 5B-2009

[*Lewis Hills - Blomidon Mountains Trail*: 55kms. Located between Bay St. George and the Bay of Islands. See Map 5B-2005.]

[*Blomidon Mountains Trail*: 40kms. Located on the north side of the Blow Me Down Mountains and extending to Frenchman's Cove and Benoit's Cove in the Bay of Islands. See Map 5B-2008.]

- 2.) Benoit's Cove to Cook's Brook: 7kms. Located in the Bay of Islands between Benoit's Cove and Cook's Brook. This trail route follows the northern summit of the foothills overlooking the Humber Arm and connects the *Blow Me Down Mountain Trail* to Mount Moriah and the city of Corner Brook. See Map 6-2009.
- 3.) Chimney Cove Valley: 44kms. Located in the North Arm Hills between the Bay of Islands and Gros Morne National Park. This trail route begins on the Corner Brook Pulp and Paper Ltd. logging road leading to Glenburnie, climbs to the top of the eastern side of the North Arm Hills, then winds its way around the southwestern boundary of Gros Morne National Park to Chimney Cove valley, where the main stem descends into the valley and eventually meets up with a secondary route that encircles above the valley to the east and north before descending to the outlet of Chimney Cove Pond. This trail route connects the *Humber Valley Trail* to the community of Trout River in Gros Morne National Park, via Corner Brook Pulp and Paper Ltd. logging roads. See Map 9-2009.
- 4.) Arches to Daniel's Harbour: 10kms. Located on the Gulf of St. Lawrence coastline on the Great Northern Peninsula between the Arches Provincial Park and Daniel's Harbour. This route connects the *Four Ponds to Flat Hills Traverse* and *Indian Lookout Trail* to the Corner Brook Pulp and Paper Ltd. logging roads northeast of Daniel's Harbour. The route has been modified to satisfy agricultural interests south of Portland Hill (a.k.a. Portland Head). See Map 13-2009

[Arches – Portland Head: 7kms. Located between Arches Provincial Park and Portland Hill (a.k.a. Portland Head). See Map 13-2005]

- 5.) Parsons Pond to Eastern Blue Pond: 178kms. Located on the Great Northern Peninsula between Parsons Pond and Eastern Blue Pond. This overall trail route connects existing trail sections, including the *Four Ponds to Flat Hills Traverse* and *Indian Lookout Trail* to the *Blue Mountain Trek* via a mountain trail route around the Portland Creek watershed, and provides new, much needed, access trails to the main stem of the IATNL long-distance trail route. See Map 14AB-2009.

[Four Ponds – Flat Hills Traverse: 60kms. Located east of Parsons Pond and between Four Ponds on the Main River and the Flat Hills. See Maps 11B-2005.]

[Blue Mountain Trek: 70kms. Located in the Long Range Mountains between Brian's Pond and Eastern Blue Pond. See Maps 14A-2005 and 14B-2005.]

[Western Brook Gulch: 18kms. Located between Parsons Pond and Western Brook Gulch of Parsons Pond. See Map 11A-2008.]

[Eastern Brook Gulch: 15kms. Located between Parsons Pond and Eastern Brook Gulch of Parsons Pond. See Map 11B-2008.]

[Indian Lookout Trail: 8kms. Located south of Portland Creek Inner Pond, this trail was originally approved by Crown Lands in February 2005 as a stand-alone trail, prior to the 2005 Environmental Assessment. In 2008 a Crown Lands application and EA registration was made for 8 additional kilometers of access trail. See Map 12-2008.]

- 6.) White Hills Trail: 35km. Originating at Route 430 near St. Anthony airport and extending eastward across the White Hills to St. Anthony. See 2005 Maps 17A and 17B. This trail was previously released from further environmental assessment in 2005.

(2) Physical Features

(a) The proposed IATNL will be approximately one meter wide with no bridges or board walks and developed in such a way as to reduce the possibility of ATV access. The only footprint created will be a narrow path over original natural ground.

(b) The proposed IATNL will traverse terra firma, avoiding bogs, marshes and wetlands. Much of the new trail will be through a mix of forested terrain, with the remainder over barrens and scrub, particularly at higher elevations.

(c) With few exceptions the proposed IATNL will be routed around municipal watersheds. At Humber Arm South, Mount Moriah, Daniels Harbour, and St. Anthony the IATNL has received a Municipal Recommendation to cross the town's boundary.

(3) Construction

(a) Development of the proposed IATNL will be phased in over ten years. The first phase was developed in 2006, with 3 additional trail sections developed in 2007, 3 in 2008, and 3 in 2009.

(b) As a result of the low impact, environmentally friendly nature of the proposed trail development, no resource conflicts are foreseen during or after trail development. On the contrary, the IATNL will promote sustainable and environmentally friendly tourism development across much of western Newfoundland.

(4) Operation

Once complete the proposed IATNL will be maintained as a low impact, environmentally friendly walking/hiking trail that promotes safe and reliable access to Newfoundland's great outdoors along its Appalachian mountain range. It is expected that the highest use of the trail will take place between the months of May and September of each year, with hikers being discouraged to enter remote back country areas near outfitters' hunting operations during the fall hunting season. As colder nights and shorter days are not conducive to back country hiking, it is expected that few hikers would be interested in such an adventure that time of the year.

(5) Work Crews

Sections of the proposed IATNL will be development and maintained by work crews of 3 to 5 individuals utilizing chainsaws and brush cutters. Safe operating procedures will be followed and no environmentally hazardous materials will be involved, with the exception of small amounts of gasoline and chain oil.

All fire safety regulations will be strictly adhered to and enforced.

(6) Project Related Documents

1. Municipal Recommendation Forms (required by Crown Lands) from communities along the proposed IATNL route where trail cutting is required.

APPROVAL OF THE UNDERTAKING

Required Approvals:

1. Approval from municipalities whose town limits the IATNL will enter.
2. Permit from Crown Lands Division of Provincial Department of Environment and Conservation to occupy Crown Lands on the IATNL route.

SCHEDULE

The next phase of trail development is scheduled to begin mid June 2010 and continue until late October 2010. Given the nature of walking/hiking trail development, weather conditions in Newfoundland leave only this short window of opportunity.

Later phases of development will extend from June to October 2011 and 2012.

FUNDING

Previous projects funded by Service Canada include IATNL Marketing and Office Coordinator (2006), Indian Lookout Trail (2006), *Indian Range* and *Humber Valley Trails*, and Phase One of *Four Ponds to Flat Hills Traverse* (2007), Phase One of *Lewis Hills, Blow Me Down Mountain*, and *Devil's Bite (Parsons Pond) Trails* (2008), and Phase Two of *Lewis Hills, Blow Me Down Mountain*, and *Devil's Bite Trails*, and Phase One of *French Shore Trail* (between Conche and Croque) (2009).

Previous projects funded by the Provincial Department of Innovation Trade and Rural Development (INTRD) include the *Indian Range* and *Humber Valley Trails*, and Phase One of the *Four Ponds to Flat Hills Traverse* (2007), Phase One of *Lewis Hills, Blow Me Down Mountain*, and *Devil's Bite (Parsons Pond) Trails* (2008), and Phase Two of *Lewis Hills, Blow Me Down Mountain*, and *Devil's Bite Trails*, and Phase One of *French Shore Trail* (between Conche and Croque) (2009).

Projects funded by ACOA include the IATNL Mapping and Marketing Initiative (2007-2009).

Apart from paid trail cutters, volunteers account for a significant percentage of all IATNL operations, from executive committees to trail development.

List of IATNL Maps

IATNL 2009 Overview: Port aux Basques to Crow Head

Map 5B-2009: Simms and Red Gulches

Map 6-2009: Benoit's Cove to Cook's Brook

Map 9-2009: Chimney Cove Valley

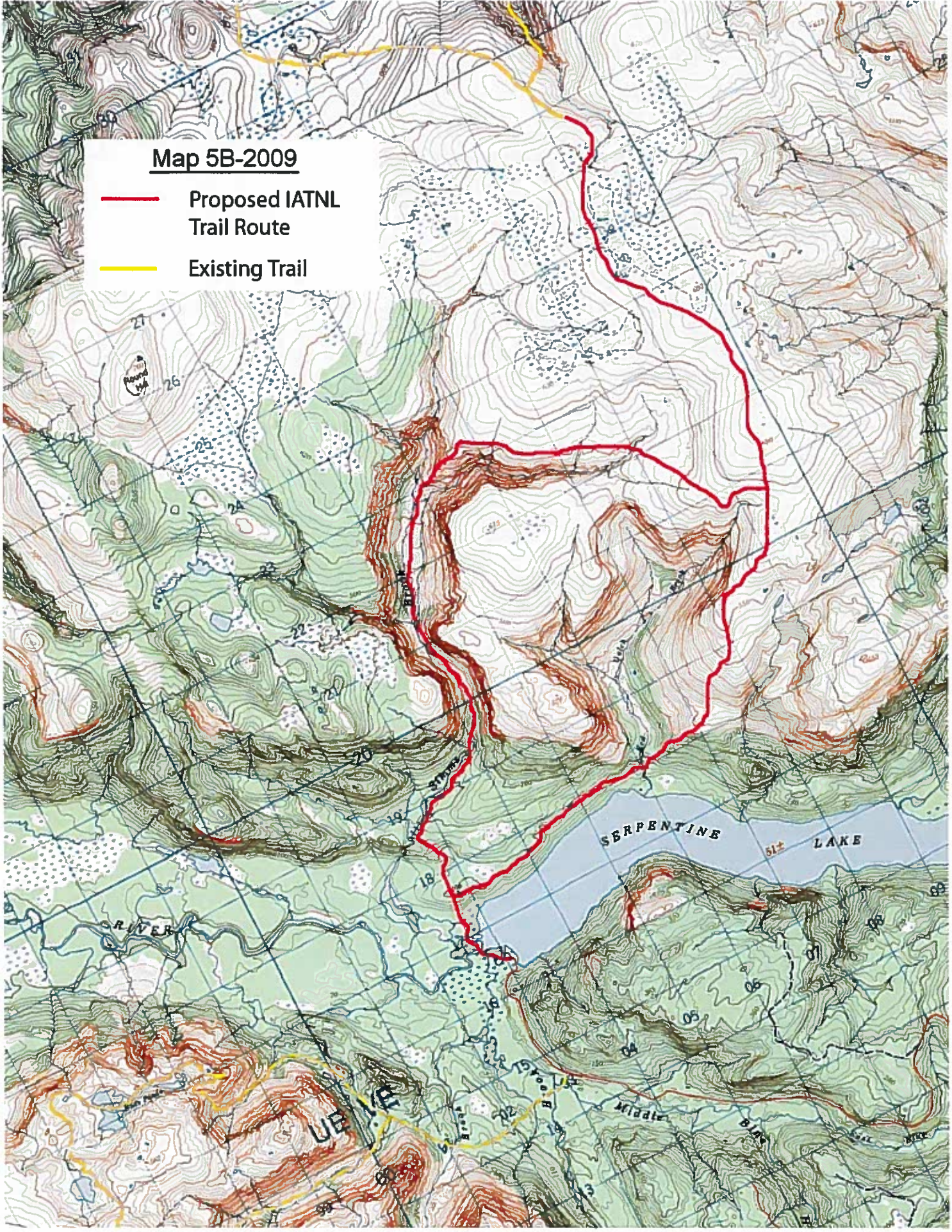
Map 13-2009: Arches to Daniel's Harbour

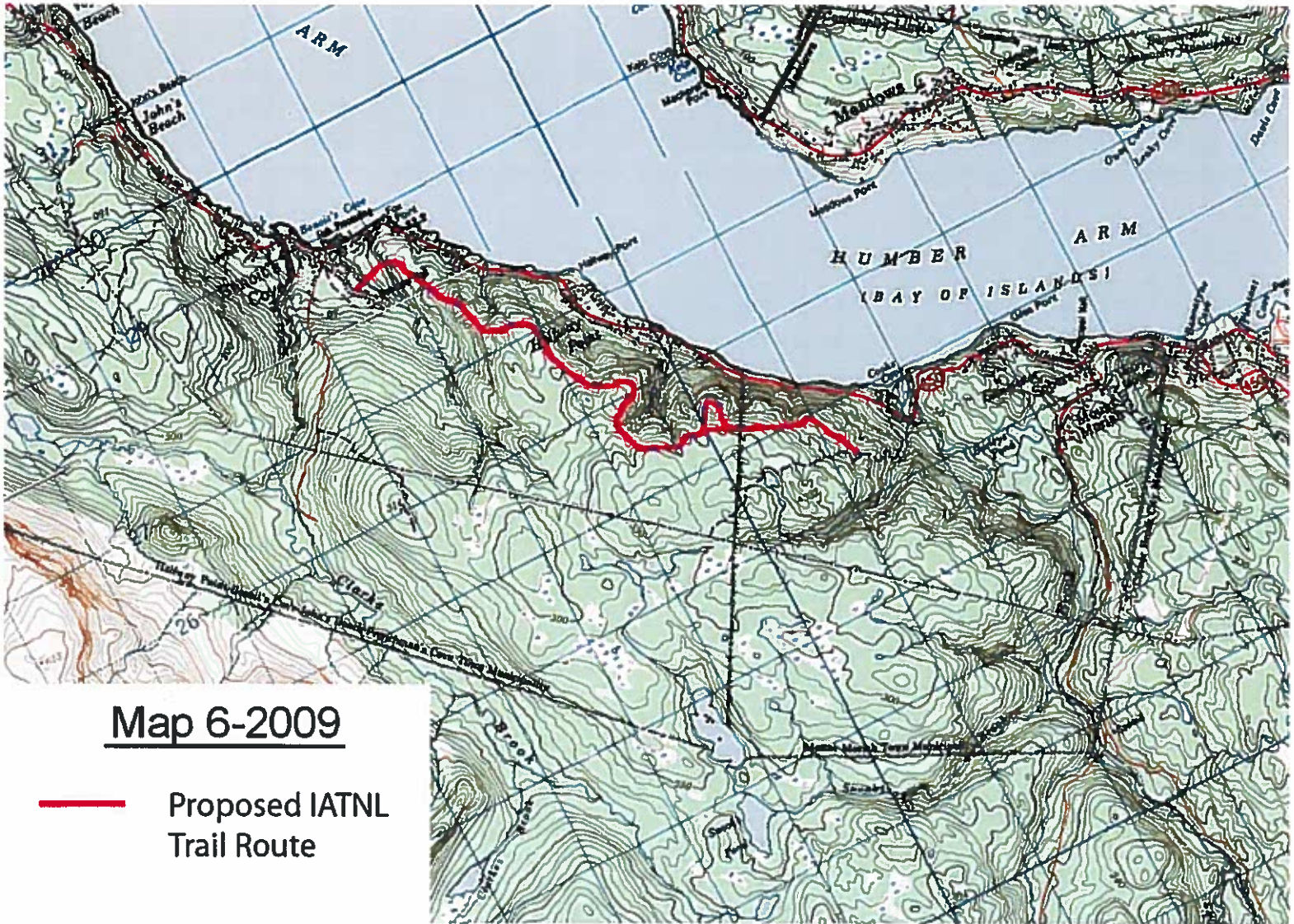
Map 17A-2005: White Hills

Map 17B-2005: White Hills

Map 5B-2009

-  Proposed IATNL Trail Route
-  Existing Trail

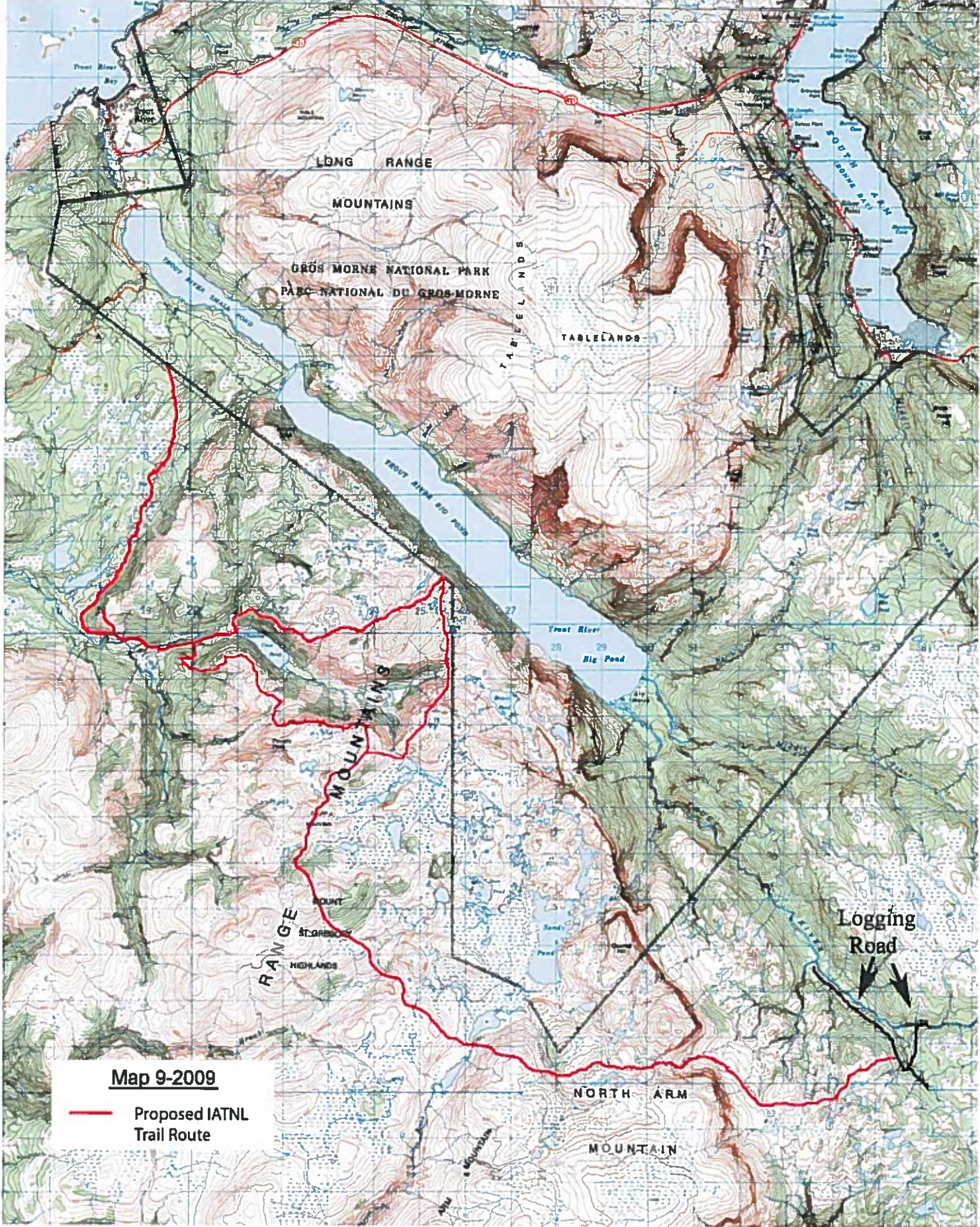




Map 6-2009



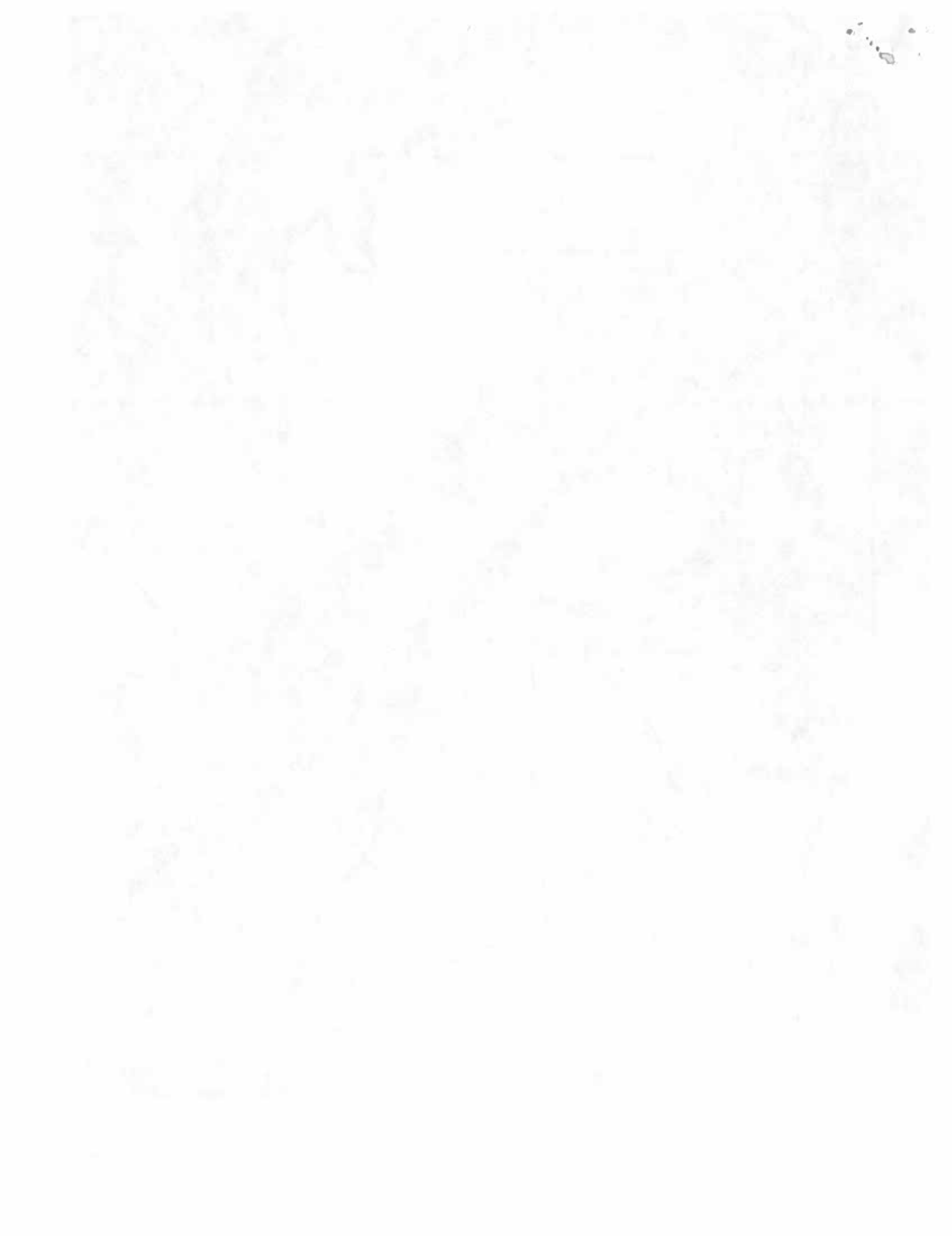
Proposed IATNL
Trail Route

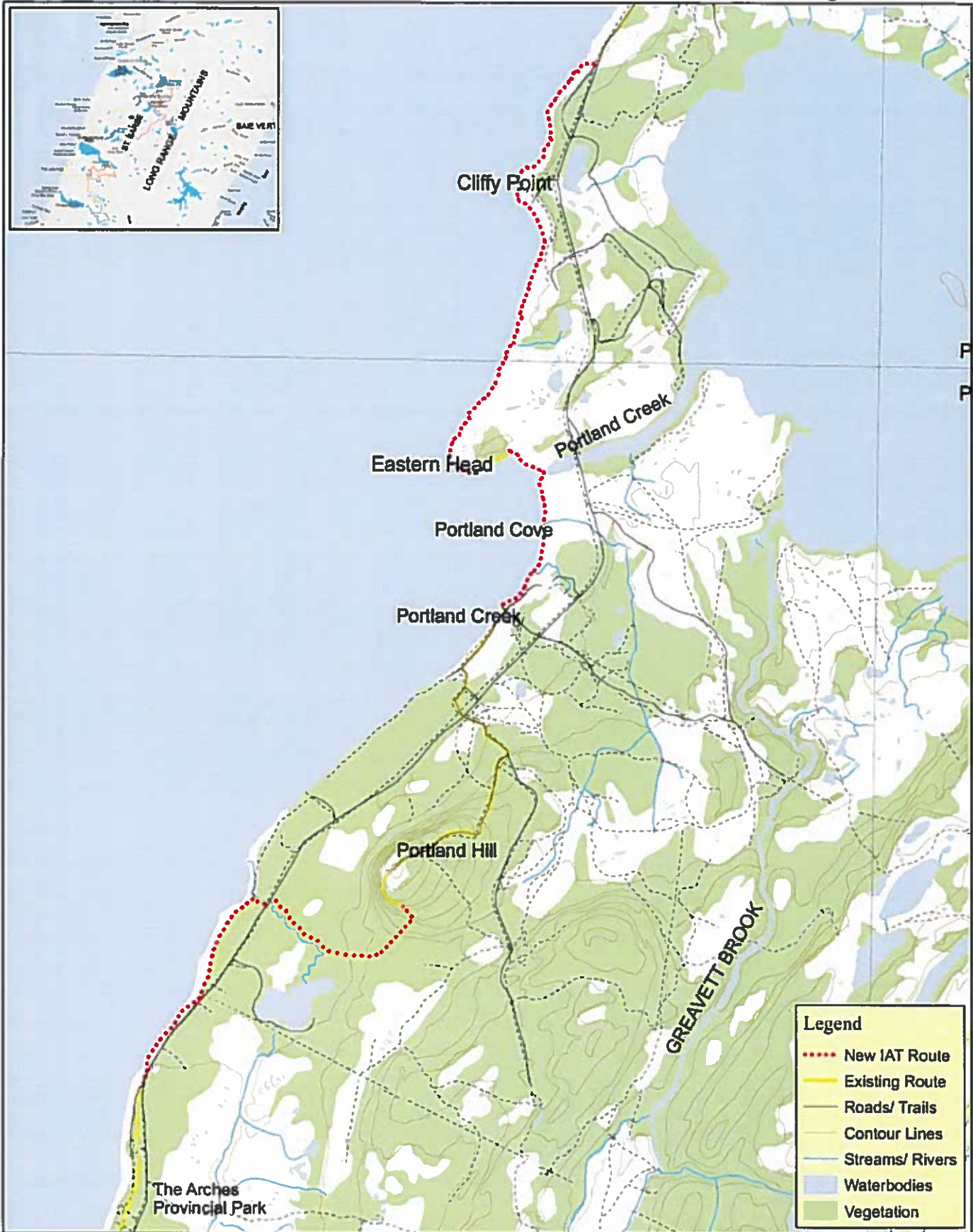


Map 9-2009

— Proposed IATNL Trail Route

Logging Road



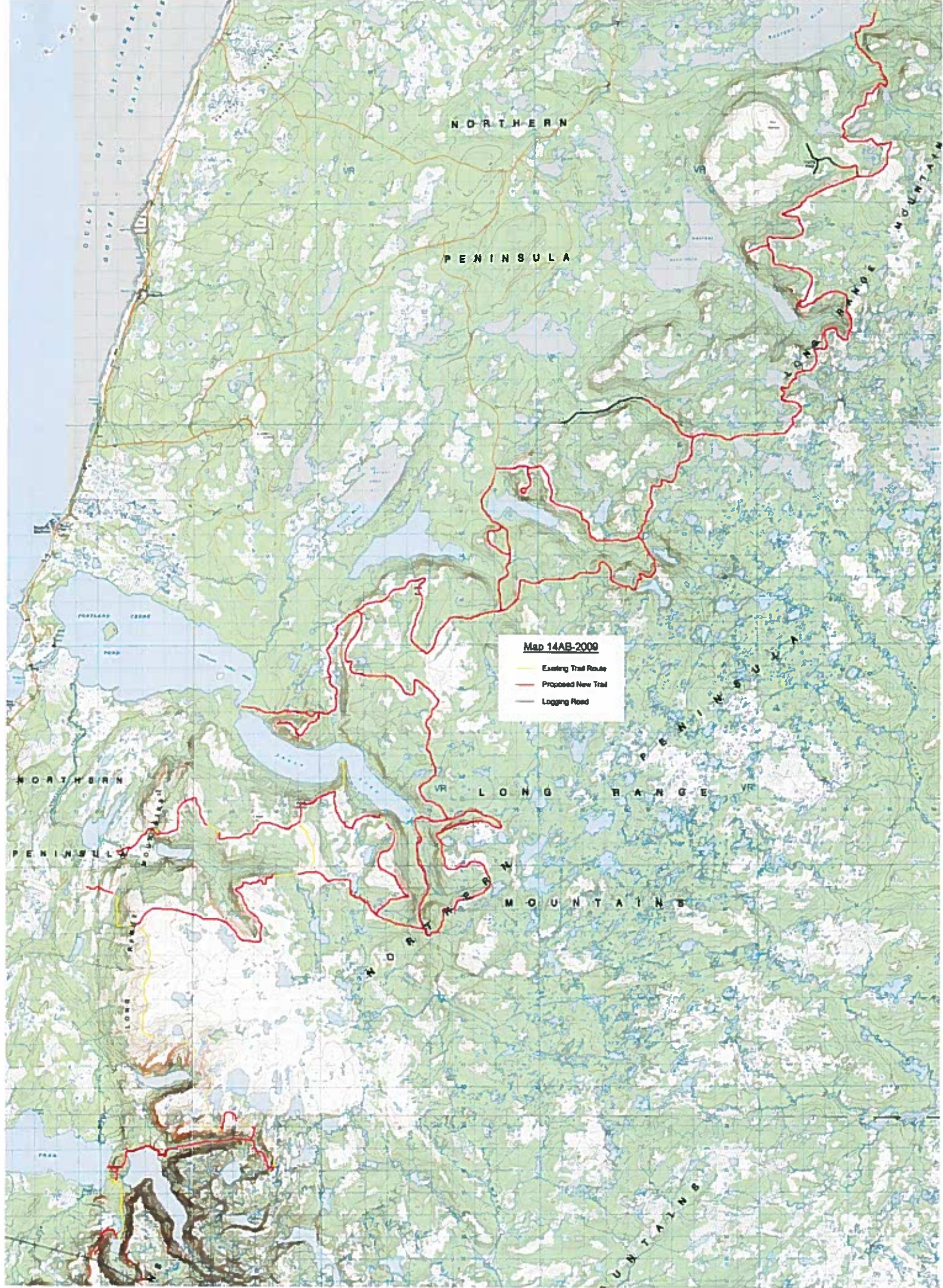


Map created by:
Inland Fish & Wildlife Division HQ
Information provided by:
Mr. Paul Wylezol and IAT NL

Projection Information:
Datum NAD 83/ Transverse Mercator
Grid Projection:
NAD 83/ UTM/ Zone 21

The IFW does not take
any responsibility for
the integrity of the
information provided.

460000
Map 12 I/14 1:50,000
Corner Brook, Winter 2004/ 2005



Map 14AB-2009
Existing Trail Route
Proposed New Trail
Logging Road

570000 White Hills Trail: 20 km

580000 Map 17A



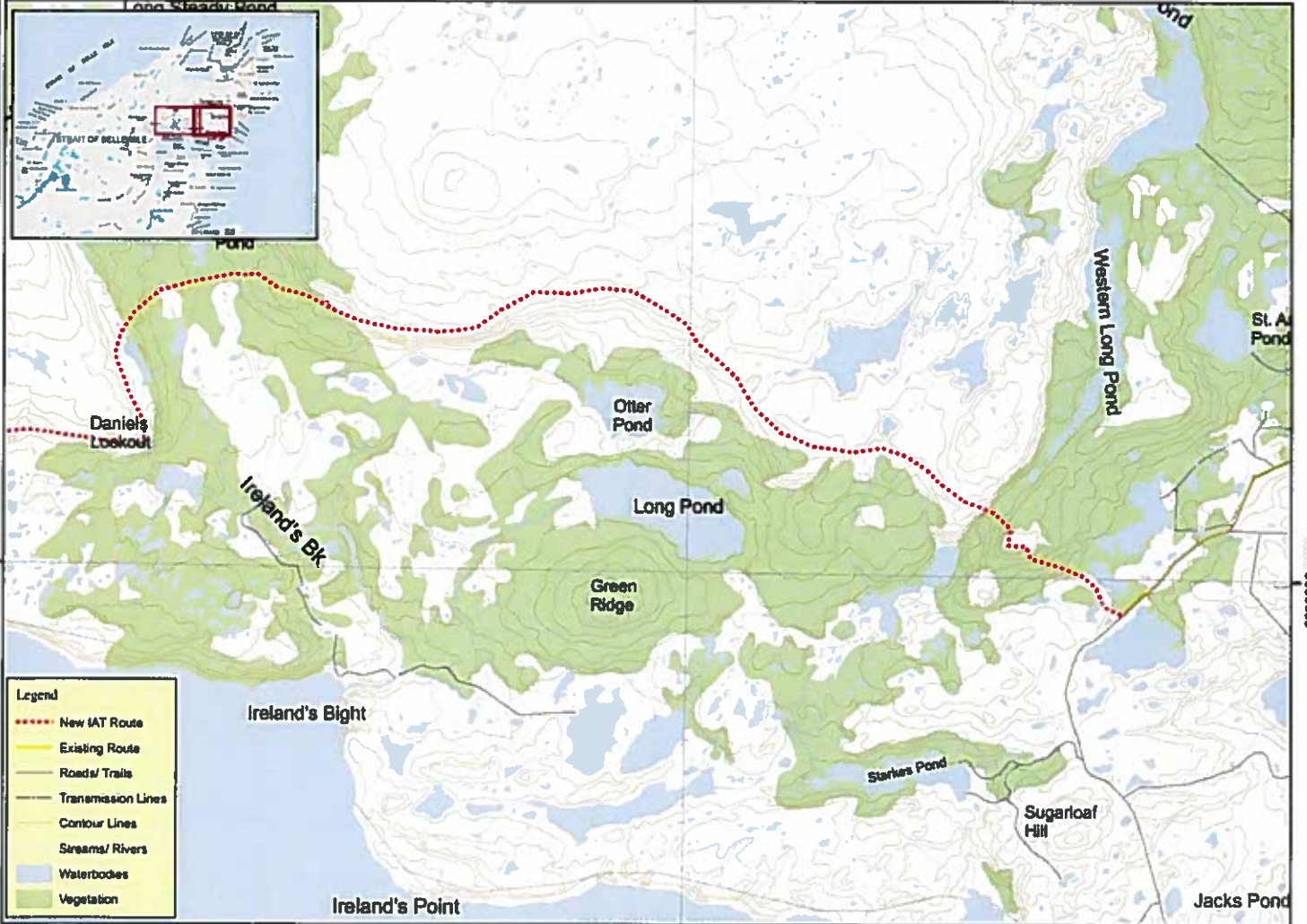
- Legend**
- New IAT Route
 - Existing Route
 - Roads/ Trails
 - Transmission Lines
 - Contour Lines
 - Streams/ Rivers
 - Waterbodies
 - Vegetation

Map created by: Inland Fish & Wildlife Division HQ Information provided by: Mr. Paul Wylezol and IAT NL Projection Information: Datum NAD 83/ TM/ Zone 21 Grid Projection: Datum NAD 83/ UTM/ Zone 21 The IFW does not take any responsibility for the integrity of the information provided. Maps 02 M/S & 12 P/R 1:50,000 Corner Brook, Winter 2004/ 2005

White Hills Trail: 20 km

590000

Map 17B



Map created by:
Inland Fish &
Wildlife Division HQ

Information provided by:
Mr. Paul Wylezol and IAT NL

Projection Information:
Datum NAD 83/ TM/ Zone 21

Grid Projection:
Datum NAD 83/ UTM/ Zone 21

The IFW does not take any
responsibility for the integrity
of the information provided.

Maps 02 M/5 & 12 P/8 1:50,000
Comer Brook, Winter 2004/ 2005



