



**BARKER'S CONSTRUCTION LTD.**

| *Your earth moving Contractor*

# ENVIRONMENTAL ASSESSMENT REGISTRATION DOCUMENT

Proposed Sand & Gravel Quarry-Indian River

Prepared by:

Barker's Construction Ltd.

September 2010

## TABLE OF CONTENTS

1.0	NAME OF UNDERTAKING	1
2.0	PROPONENT	1
2.1	Name	1
2.2	Address	1
2.3	Telephone & Fax Numbers	1
2.4	Principal Contact	1
3.0	THE UNDERTAKING	1
3.1	Nature of the Undertaking	1
3.2	Purpose/Rationale/Need for the undertaking	1
4.0	DESCRIPTION OF THE UNDERTAKING	1
4.1	Geographic Location	1
4.2	Physical Features	1
4.2.1	Project Site Description	1
4.2.2	Existing Biophysical Environment	2
4.3	Construction	2
4.3.1	Site Access	2
4.3.2	Pit Development	2
4.3.3	Potential Sources of Pollution during Construction	2
4.4	Operation	3
4.4.1	Potential Sources of Pollution during Operation	3
4.5	Occupations	4
5.0	APPROVAL OF THE UNDERTAKING	4
6.0	SCHEDULE	4
7.0	FUNDING	4
8.0	SUBMISSION	4

## LIST OF FIGURES

Figure 1:	Site Location	5
Figure 2:	Pit Location	6
Figure 3:	Pictures of existing pit	7

## 1.0 NAME OF THE UNDERTAKING:

Sand and gravel quarry Route 410 – Baie Verte Highway, Indian River.

## 2.0 PROPONENT:

2.1 NAME	Barker's Construction Ltd.
2.2 ADDRESS	PO Box 160, 325 Highway 410, Baie Verte, NL A0K 1B0
2.3 TELEPHONE	709-532-4054
FAX	709-532-4262
2.4 PRINCIPAL CONTACT	Roy Barker Owner/Manager Ph: 709-532-4054 (Office) 709-532-7004 (Cell)

## 3.0 THE UNDERTAKING:

### 3.1 *Nature of the Undertaking*

The proposed project involves the development of a sand and gravel pit site approximately 600m north off the Trans-Canada Highway on Route 410.

The site is adjacent to an existing pit owned by P & B Trucking. Access to the pit will be via an existing access road approximately 0.5 km. The Proponent proposes to develop the area as a pit operation, excavating, crushing and transporting gravel materials for use in Barker's Construction Ltd.'s concrete operations located in Baie Verte, NL.

### 3.2 *Purpose/Rationale/Need for the Undertaking*

The purpose of this project is to produce a product (sand and gravel) for use as concrete aggregate material for use on the Baie Verte Peninsula and Green Bay area.

## 4.0 DESCRIPTION OF THE UNDERTAKING:

### 4.1 *Geographic Location*

The quarry is located approximately 600m North from the Trans-Canada Highway on Route 410 on NTS Map Sheet 12H08. Refer to Figure 1: Site Location and Figure 2: Pit Location for details.

### 4.2 *Physical Features*

#### 4.2.1 *Project Site Description*

The primary physical feature is the pit itself. Access to the pit will be by means of an existing gravel road. Secondary processing will be limited to screening and crushing. There is a scheduled salmon river (Indian

River) approximately 170 meters within the pit perimeter but we propose to stay at least 200m outside the river boundary.

#### 4.2.2 Existing Biophysical Environment

##### Vegetation

Surrounding the pit is forest consisting of Alders, Evergreen, Pine trees, etc. Within the pit there are sparse shrubs and alders.

##### Wildlife

Wildlife species occurring in the area include those adapted to long, cold winters and short, warm summers. Moose, black bear, beaver, snow shoe hare, and fox are among the mammal species that occur there. Typical forest birds inhabit the area, including gray jay, fox sparrow, the common crow and various other birds.

##### Inland fish

The rivers and ponds of the area are host to a number of fish species including brook trout, rainbow trout, salmon, etc.

### 4.3 Construction

Construction will consist of clearing the sparse shrubbery and pit development.

#### 4.3.1 Site Access

Access to the site will be from an existing 0.5 km gravel road.

#### 4.3.2 Pit Development

The proposed pit site covers a total area of approximately 3 hectares. Initial construction activities will involve the removal of vegetative cover, where present.

#### 4.3.3 Potential Sources of Pollution during Construction

The construction phase of the development will consist of earth-moving activities. The potential sources of pollution include noise, air emissions, waste and litter.

Site run-off, if any, will be directed to vegetated areas which will filter suspended solids. In addition, barriers will be installed as required to prevent siltation of water bodies/streams.

Domestic waste generated during construction will be collected and disposed of at the Baie Verte Town Dump.

Dust control measures, such as water applications, will be provided on an as-required basis.

Petroleum products will not be stored on site during construction; petroleum products will be handled as per *Storage and Handling of Gasoline and Associated Products Regulations, 2003* under the *Environmental Protection Act (O.C. 2003-225)*.

#### 4.4 Operation

Typical excavation methods will be employed to collect the sand and gravel at the proposed site. The operation will include the excavation and loading of the native sand and gravel materials at the working face of the pit, crushing/screening, and transportation of these materials for use off-site at Barker’s Construction Ltd.’s concrete batch plant in Baie Verte, NL.

If required, appropriate ditching will be maintained on-site to ensure silt and general site run-off is controlled, and does not adversely affect the surrounding environment. In addition, perimeter ditching and settling basins, as required, will be located to prevent migration of surface water drainage from non-operating and off-site areas into operating areas. The grounds and facilities will be maintained according to environmental health and safety standards and regulations.

Equipment on site will include the following:

- Tracked Excavator (material handling and loading at the working face)
- Tandem Dump Trucks/Semi Dumps (material transportation)
- Rubber Tired Front End Loader (material handling)
- Mobile Crusher/Screenner

The pit operation will typically run from April-November, in accordance with demand for the product.

##### 4.4.1 Potential Sources of Pollution during Operation

The potential sources of pollution will be dust, noise, possible site run-off, or an accidental spill of fuel.

All equipment will have appropriate emission controls. All vehicles will have exhaust systems regularly inspected and mufflers operating properly. Dust control measures, such as water applications, will be provided on an as-required basis.

Site run-off, where possible, will be directed to vegetated areas within the project area, which will filter any potential suspended solids.

All fuel handling and storage will comply with the *Storage and Handling of Gasoline and Associated Products Regulations, 2003*. Vehicles and equipment will be maintained in good working order to prevent leaks and spills. There will be no on-site bulk storage of fuel or oil. All waste oil generated at the pit will be disposed of by a licensed disposal agent.

During operation, domestic garbage will be collected and disposed of at the Baie Verte dump.

#### 4.5 Occupations

Site construction and operations for the proposed pit will include the following:

- 1 Site Foreman/Supervisor
- 1-2 Excavator Operators
- 1 Loader Operator
- 2-3 Truck Drivers
- 2 Heavy Equipment Mechanics (located off site)

#### 5.0 APPROVAL OF THE UNDERTAKING:

Permit to Proceed: Environmental Protection Act-Assessment Regulations

Quarry Permit: Quarry Materials Act and Quarry Minerals Regulations

#### 6.0 SCHEDULE:

This project will start during the spring of 2011 once the ground thaws.

#### 7.0 FUNDING:

The funding for this project will be provided by Barker's Construction Ltd.

#### 8.0 SUBMISSION:

\_\_\_\_\_

Date

\_\_\_\_\_

Name: Roy Barker  
Position: Owner/Manager

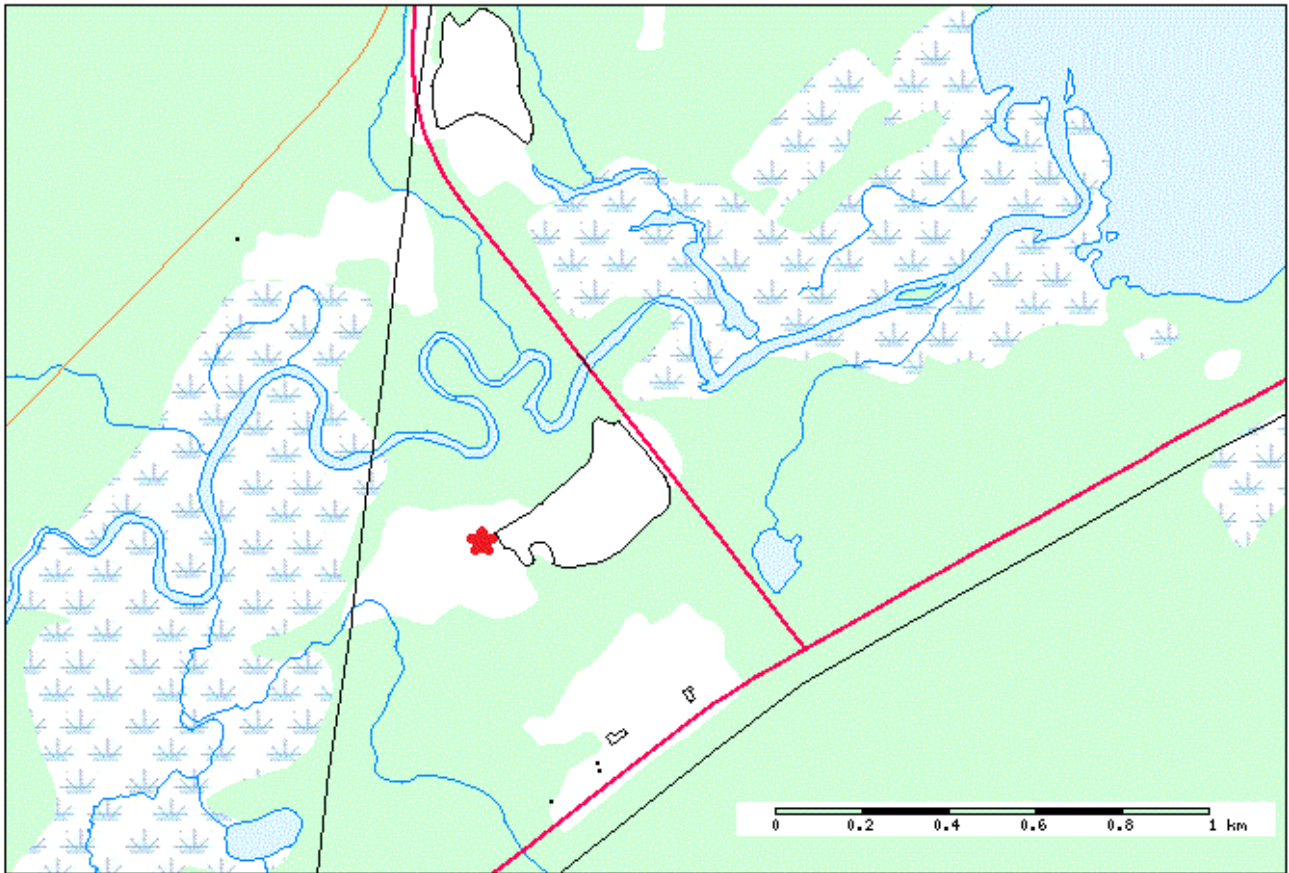


Figure 1: Site Location



Figure 2: Pit Location





Figure 3: Pictures of Existing Pit