

Government of Newfoundland & Labrador Department of Environment & Conservation



NOTE TO USERS

The information on this map was compiled from land surveys registered in the Crown Lands Registry.

Since the Registry does not contain information on all land ownership within the Province, the information depicted cannot be considered complete.

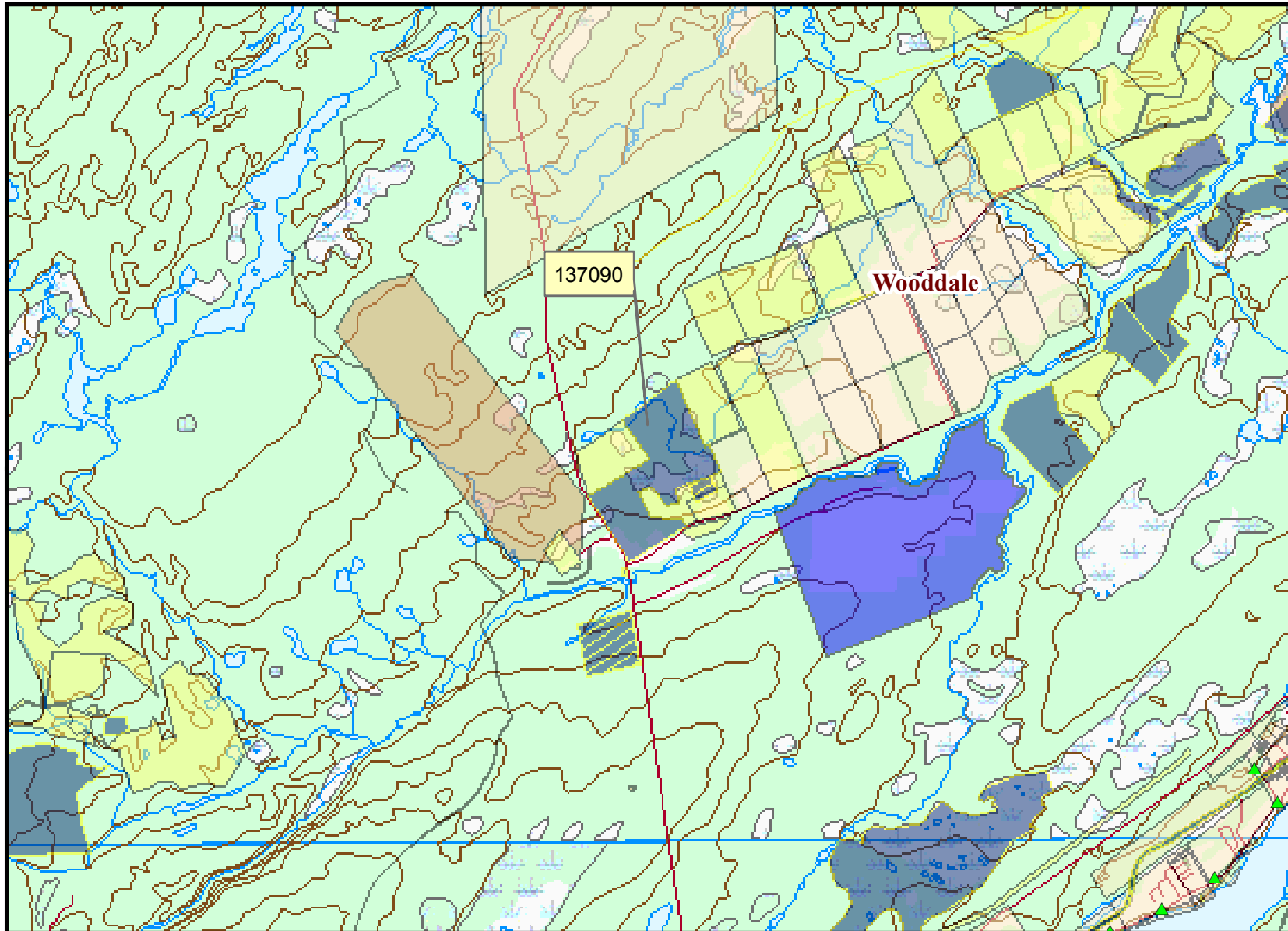
The boundary lines shown are intended to be used as an index to land titles issued by the Crown. The accuracy of the plot is not sufficient for measurement purposes and does not guarantee title.

Users finding any errors or omissions on this map sheet are asked to contact the Crown Titles Mapping Section, Howley Building Higgins Line, St. John's Newfoundland.

Users finding error or omissions can contact the Crown Titles Mapping Section by telephone at 729-0061. Some titles may not be plotted due to Crown Lands volumes missing from the Crown Lands registry or not plotted due to insufficient survey information.

The User hereby indemnifies and saves harmless the Minister, his officers, employees and agents from and against all claims, demands, liabilities, actions or cause of actions alleging any loss, injury, damages and matter (including claims or demands for any violation of copyright or intellectual property) arising out of any missing or incomplete Crown Land titles, and the Minister, his or her officers, employees and agents shall not be liable for any loss of profits or contracts or any other loss of any kind as a result.

For inquiries please contact a Regional Lands Office.
Gander - 256-1400
Clareville - 466-4074
St. John's - 729-2654
Goose Bay - 896-2488
Corner Brook - 637-2387



Crown Lands Division

Scale 1:49,000

Compiled on Mar 03, 2011

