

**Environmental Assessment Registration for Diamond Drilling, Camp
Construction, Trenching, Soil/Rock/Till Sampling & Geological Prospecting**

- *GLOVER ISLAND GOLD PROJECT* -

**Kettle Pond, Lunch Pond, Lunch Pond South Extension, Meadow Brook & Quartz Pond
Glover Island, Western Newfoundland**

**File Reference No. 200.20.1887
Natural Resources File No. E110099**

Mountain Lake Resources Inc.

Appendix 1

Figures 1 thru 38

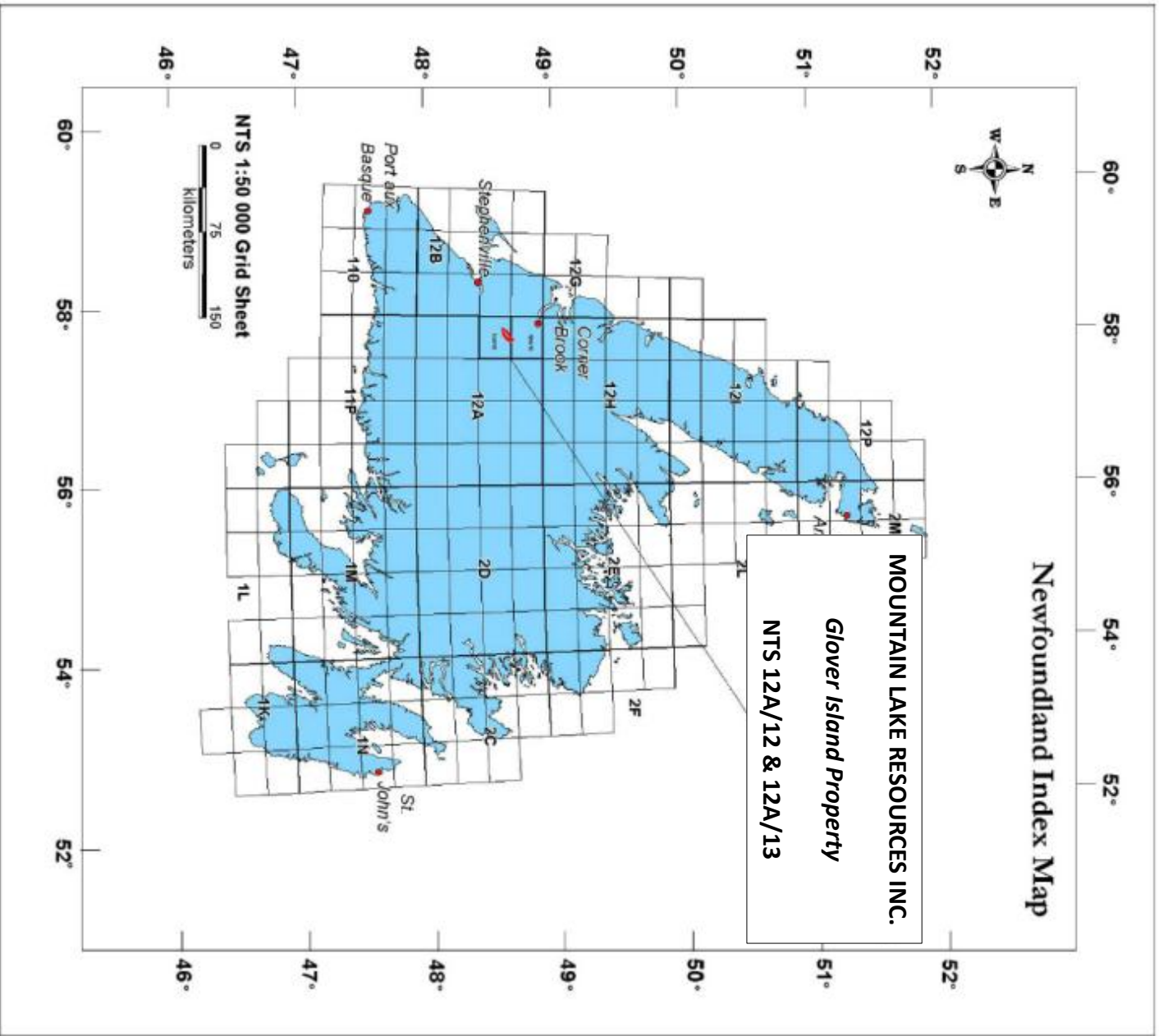


Figure 1

LOCATION OF MINING LEASE AND MINERAL EXPLORATION LICENSES

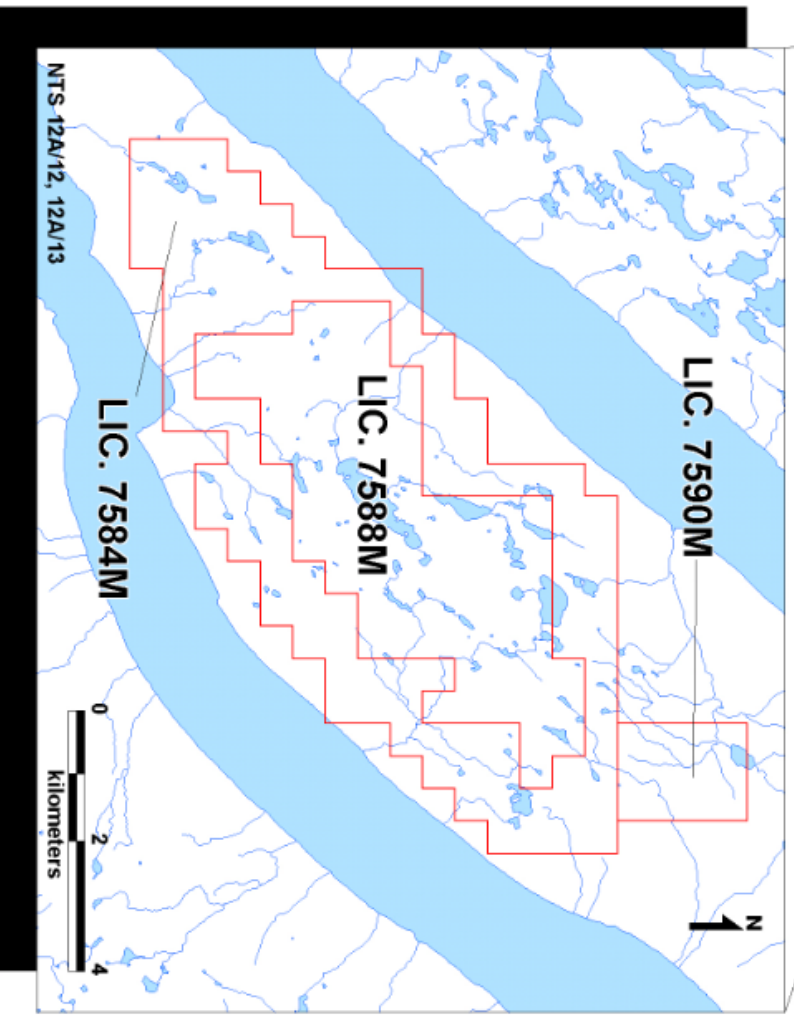


Figure 2

PROPOSED AREAS FOR DETAILED EXPLORATION

(on 1:50,000 scale topographic base)

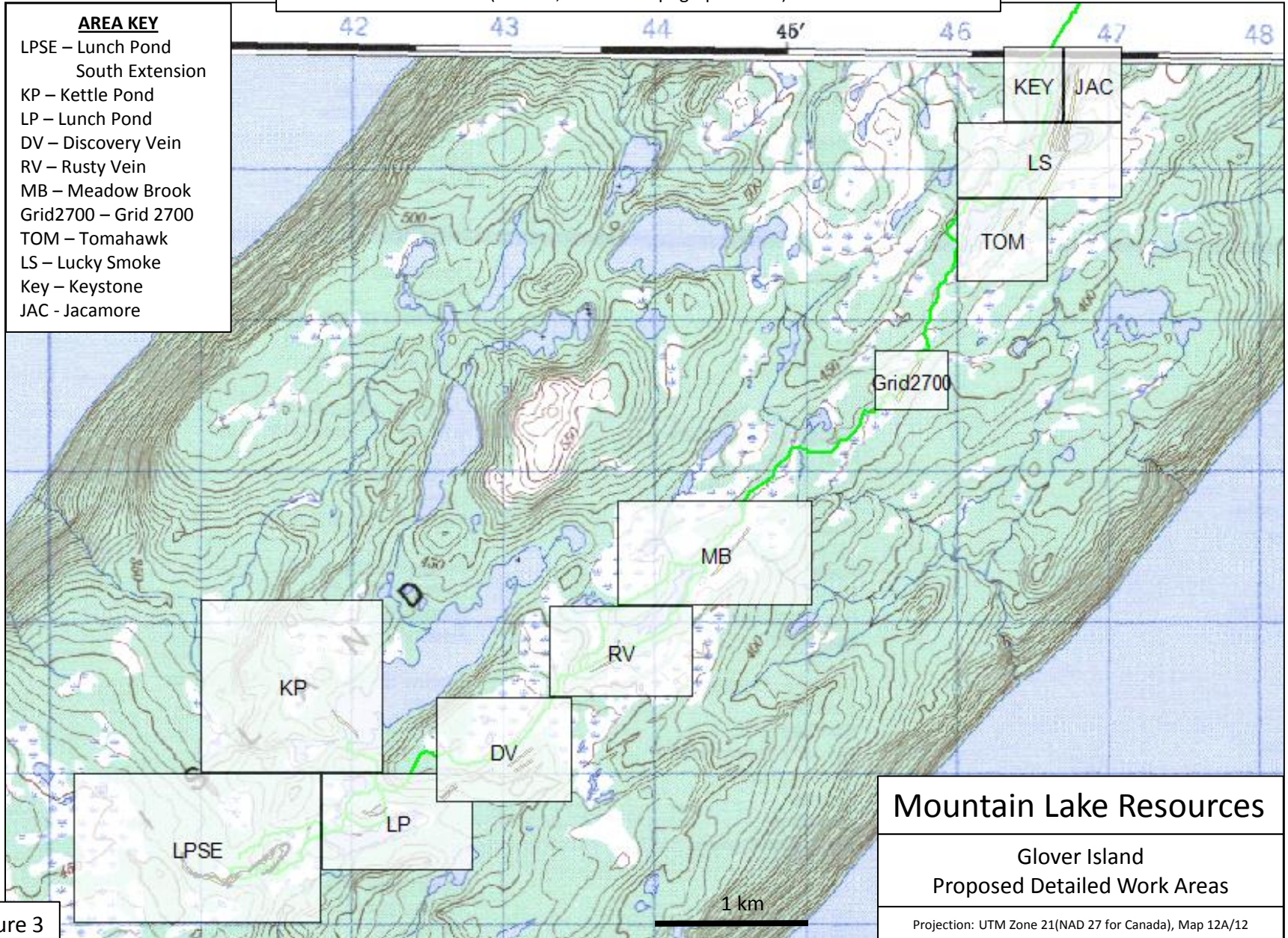


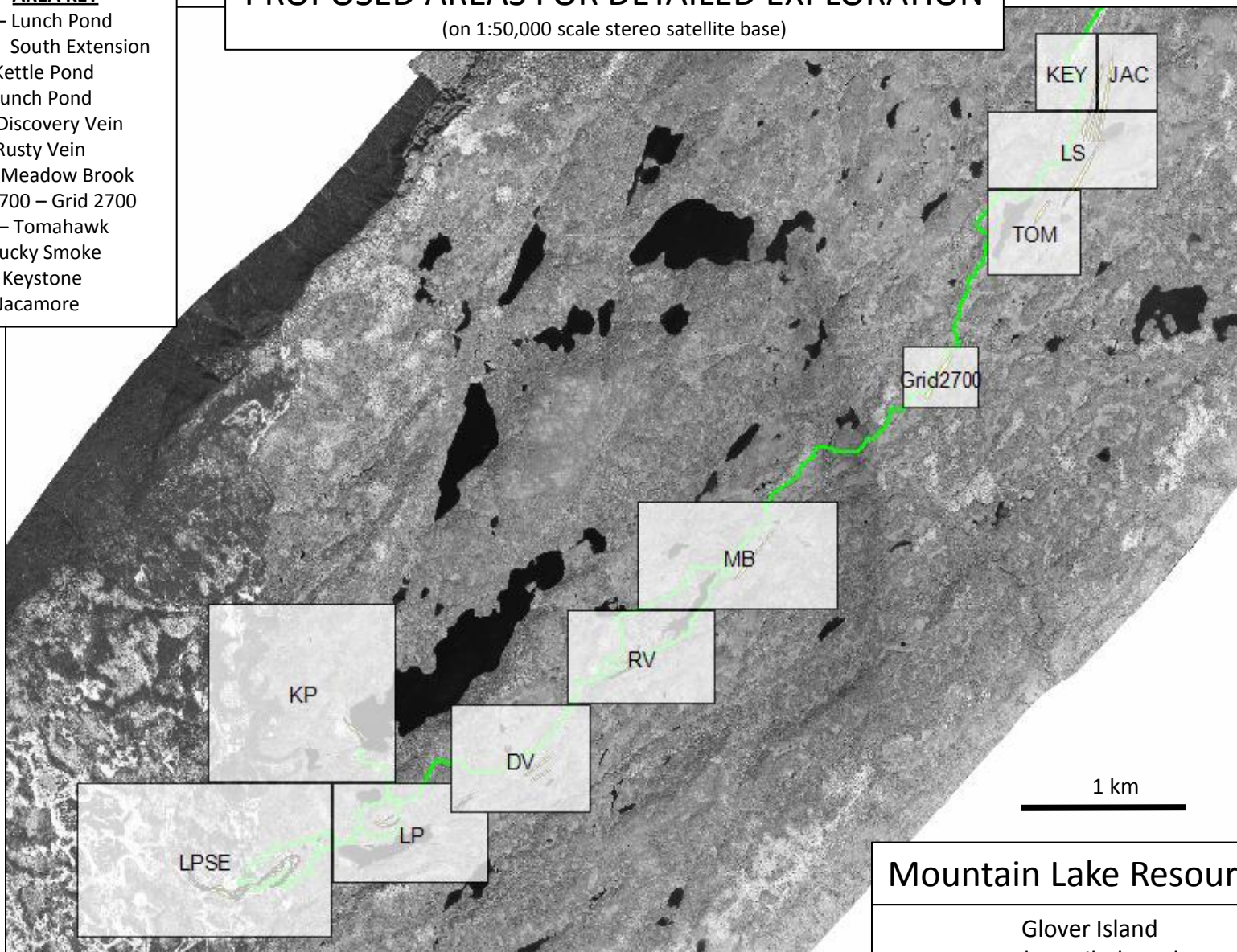
Figure 3

PROPOSED AREAS FOR DETAILED EXPLORATION

(on 1:50,000 scale stereo satellite base)

AREA KEY

- LPSE – Lunch Pond South Extension
- KP – Kettle Pond
- LP – Lunch Pond
- DV – Discovery Vein
- RV – Rusty Vein
- MB – Meadow Brook
- Grid2700 – Grid 2700
- TOM – Tomahawk
- LS – Lucky Smoke
- Key – Keystone
- JAC - Jacamore



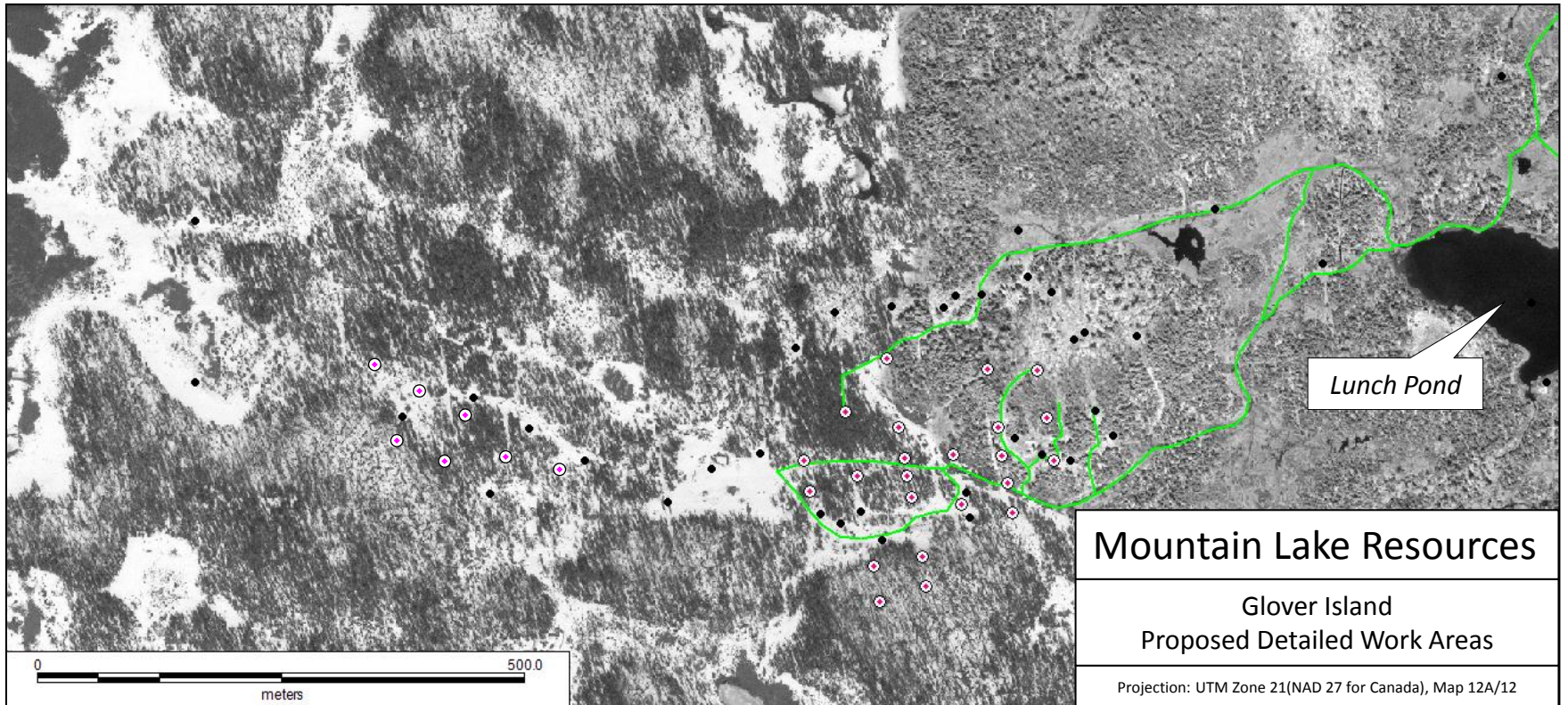
Mountain Lake Resources

Glover Island
Proposed Detailed Work Areas

Projection: UTM Zone 21(NAD 27 for Canada), Map 12A/12

Figure 4

PROPOSED DRILL SITES AT 'LUNCH POND SOUTH EXTENSION' – (LPSE)



Existing Drill Hole: •

Proposed Drill Hole: ◉

Existing Trail: —

Figure 5

PROPOSED DRILL SITES AT 'KETTLE POND' – (KP)

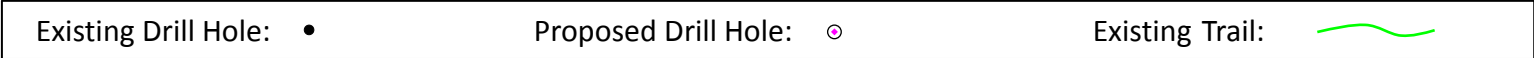
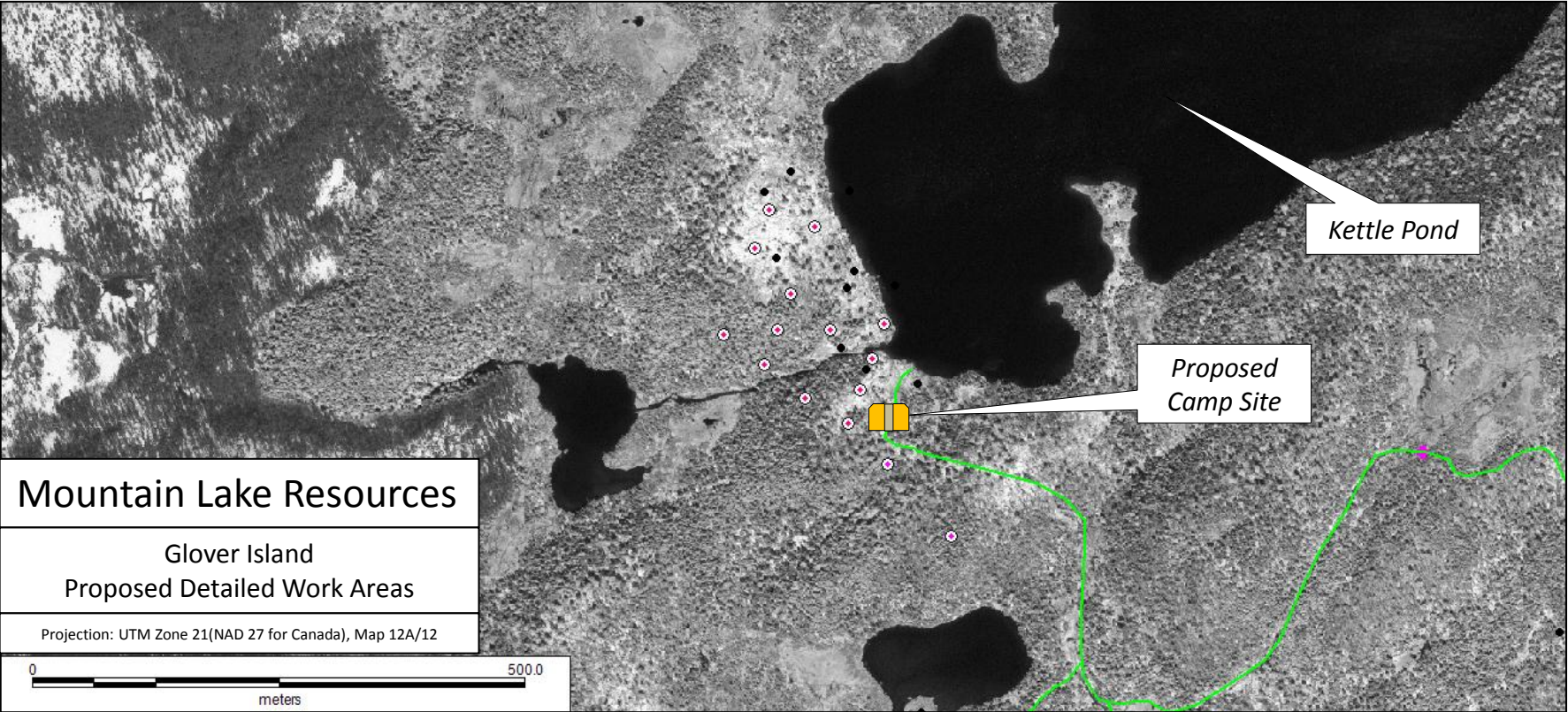


Figure 6

PROPOSED DRILL SITES AT 'LUCKY SMOKE' – (LS)

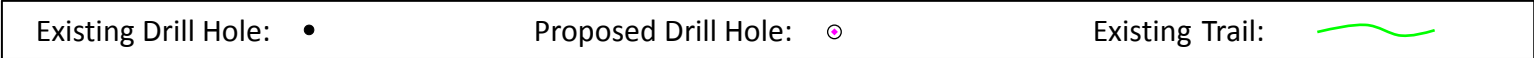
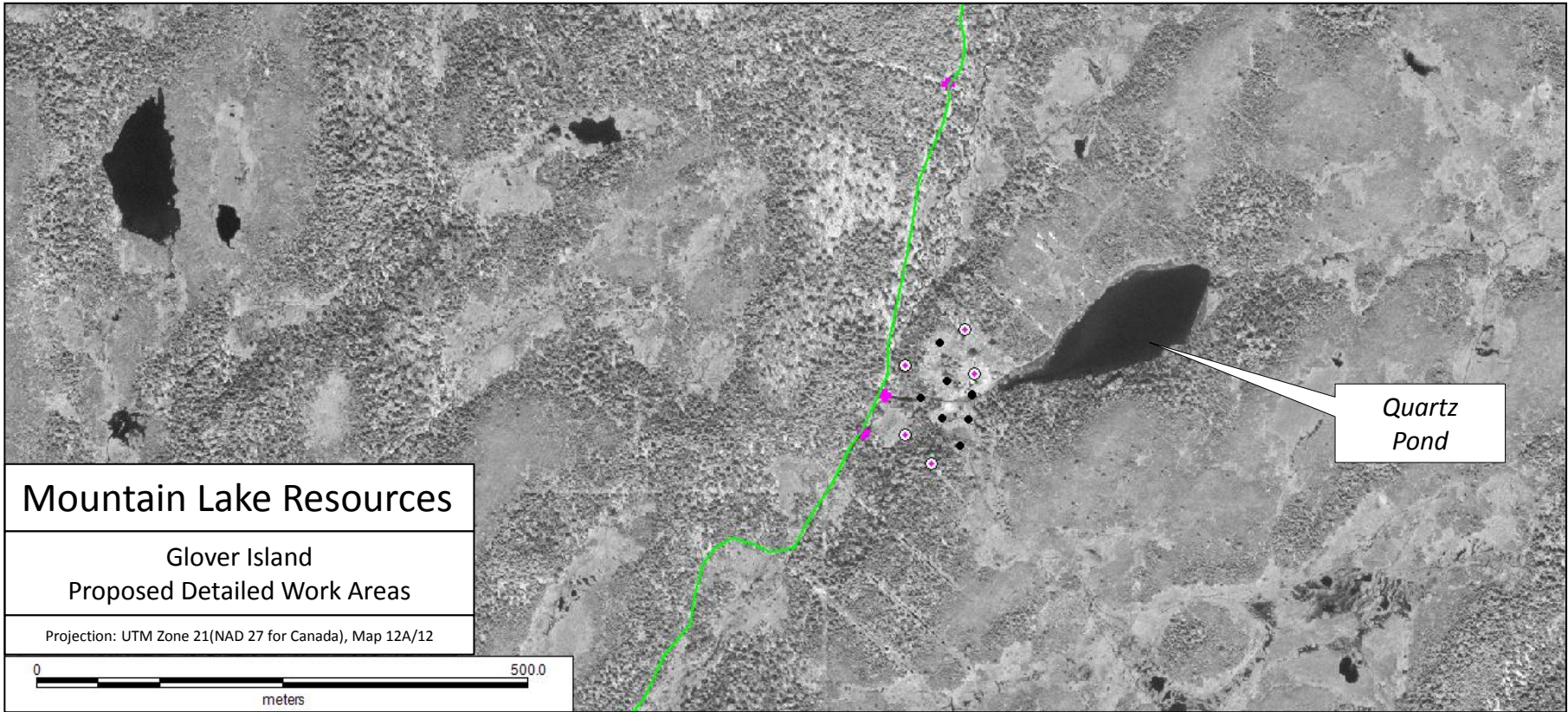


Figure 7

Location of Exploration Grids pre-dating Mountain Lake Resources Ltd.

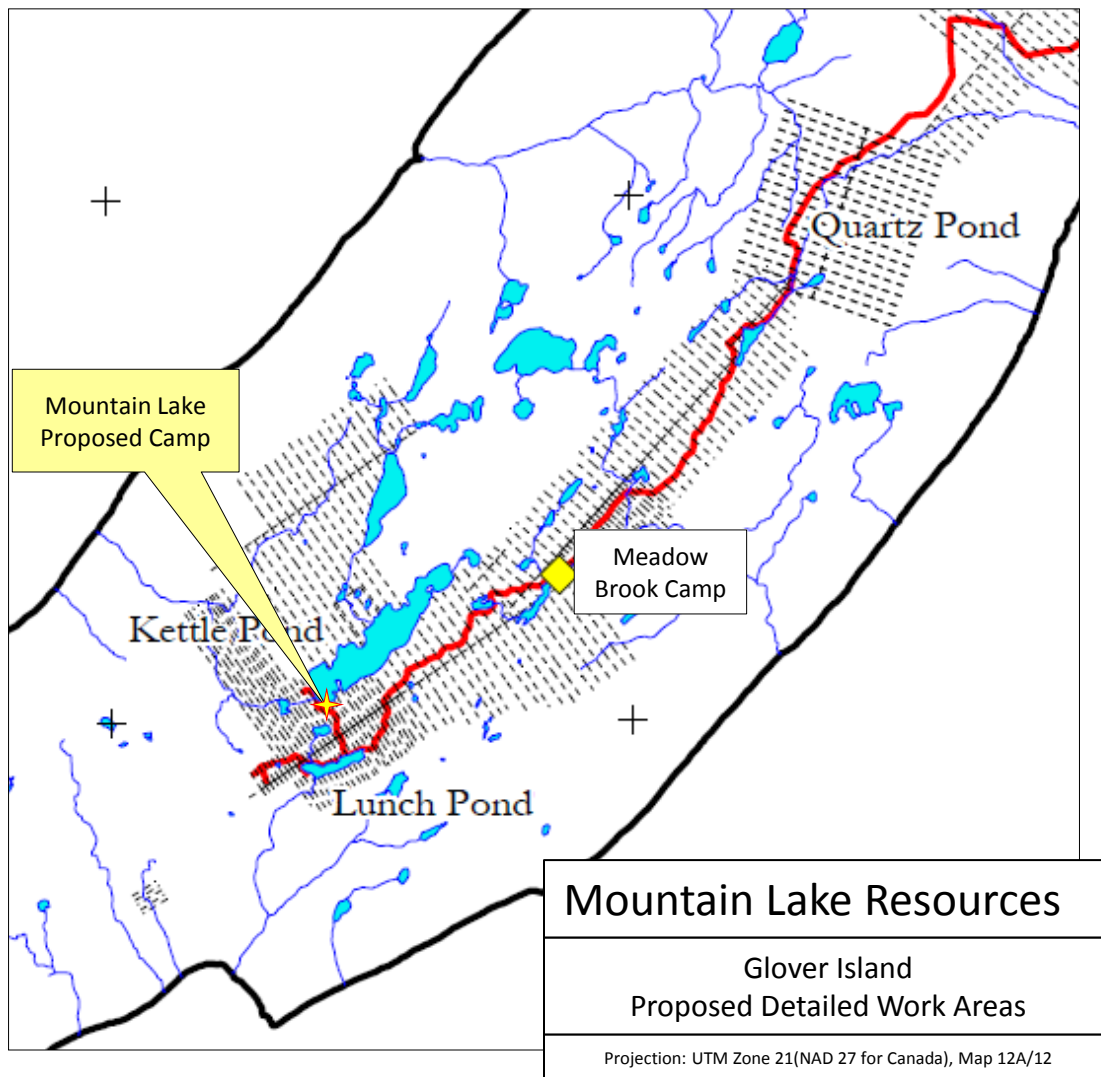


Figure 8

Trails (green) & Bog Crossings (red +)

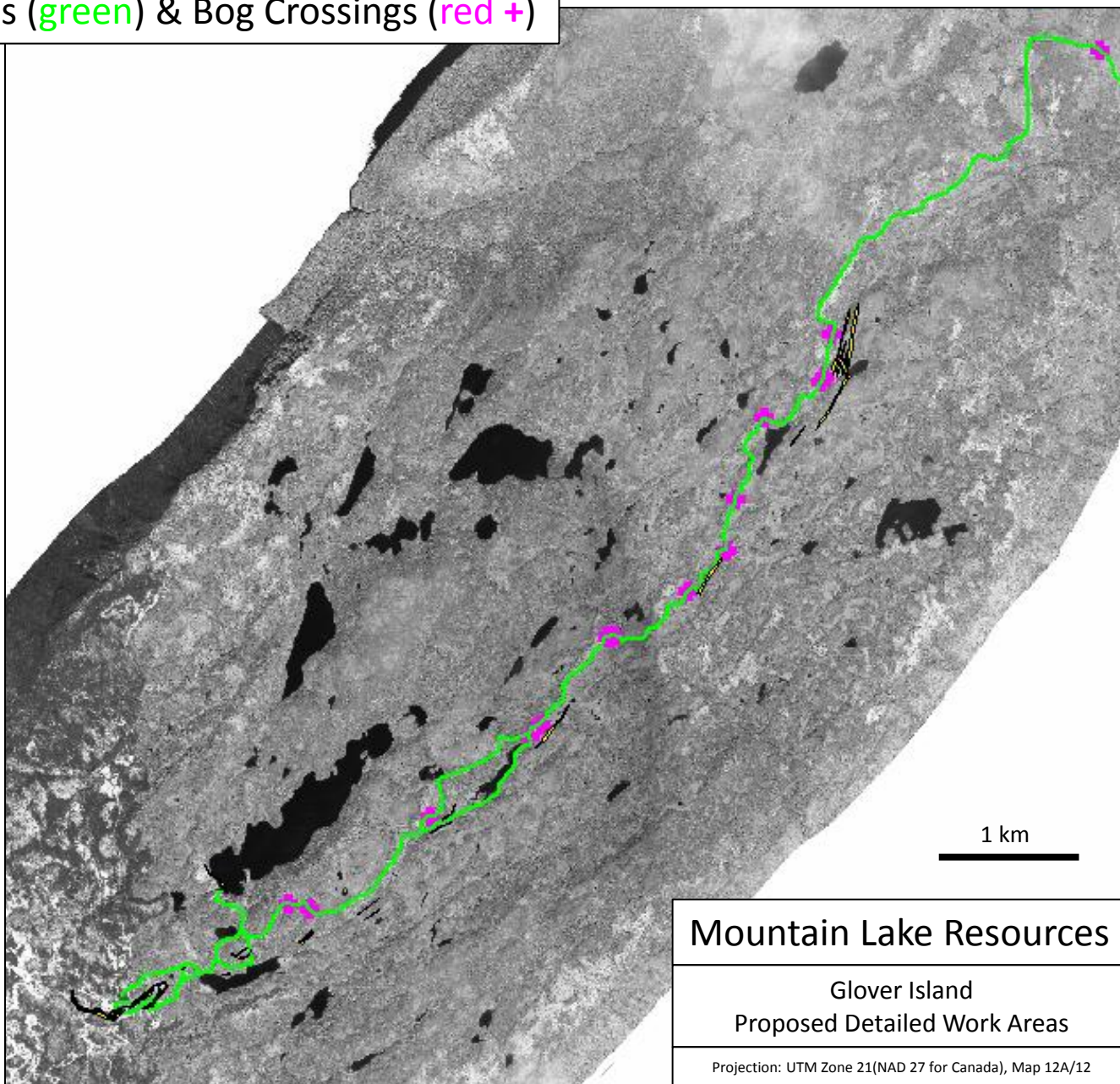


Figure 9

Mountain Lake Resources

Glover Island
Proposed Detailed Work Areas

Projection: UTM Zone 21(NAD 27 for Canada), Map 12A/12

SOUTHWEST TIP OF KETTLE POND (GLOVER IS.)



Mountain Lake Resources

Glover Island
Proposed Detailed Work Areas

Projection: UTM Zone 21(NAD 27 for Canada), Map 12A/12

Figure 10

SOUTHWEST TIP OF KETTLE POND (GLOVER IS.)



Mountain Lake Resources

Glover Island
Proposed Detailed Work Areas

Projection: UTM Zone 21(NAD 27 for Canada), Map 12A/12

Figure 11

SOUTHWEST TIP OF KETTLE POND (Camp Site)



Mountain Lake Resources

Glover Island
Proposed Detailed Work Areas

Projection: UTM Zone 21(NAD 27 for Canada), Map 12A/12

Figure 12

SOUTHWEST TIP OF KETTLE POND (Camp Site)



Mountain Lake Resources

Glover Island
Proposed Detailed Work Areas

Projection: UTM Zone 21(NAD 27 for Canada), Map 12A/12

Figure 13

SOUTHWEST TIP OF KETTLE POND (CAMP SITE)



Mountain Lake Resources

Glover Island
Proposed Detailed Work Areas

Projection: UTM Zone 21(NAD 27 for Canada), Map 12A/12

Figure 14

SOUTHWEST TIP OF KETTLE POND (Camp Site)

Mountain Lake Resources

Glover Island
Proposed Detailed Work Areas

Projection: UTM Zone 21(NAD 27 for Canada), Map 12A/12

Figure 15



SOUTHWEST TIP OF KETTLE POND (Camp Site)

Mountain Lake Resources

Glover Island
Proposed Detailed Work Areas

Projection: UTM Zone 21(NAD 27 for Canada), Map 12A/12

Figure 16

Mountain Lake Resources Glover Island Exploration Project
NTS 12A/12 (Proposed Camp Site and Fuel Cache)

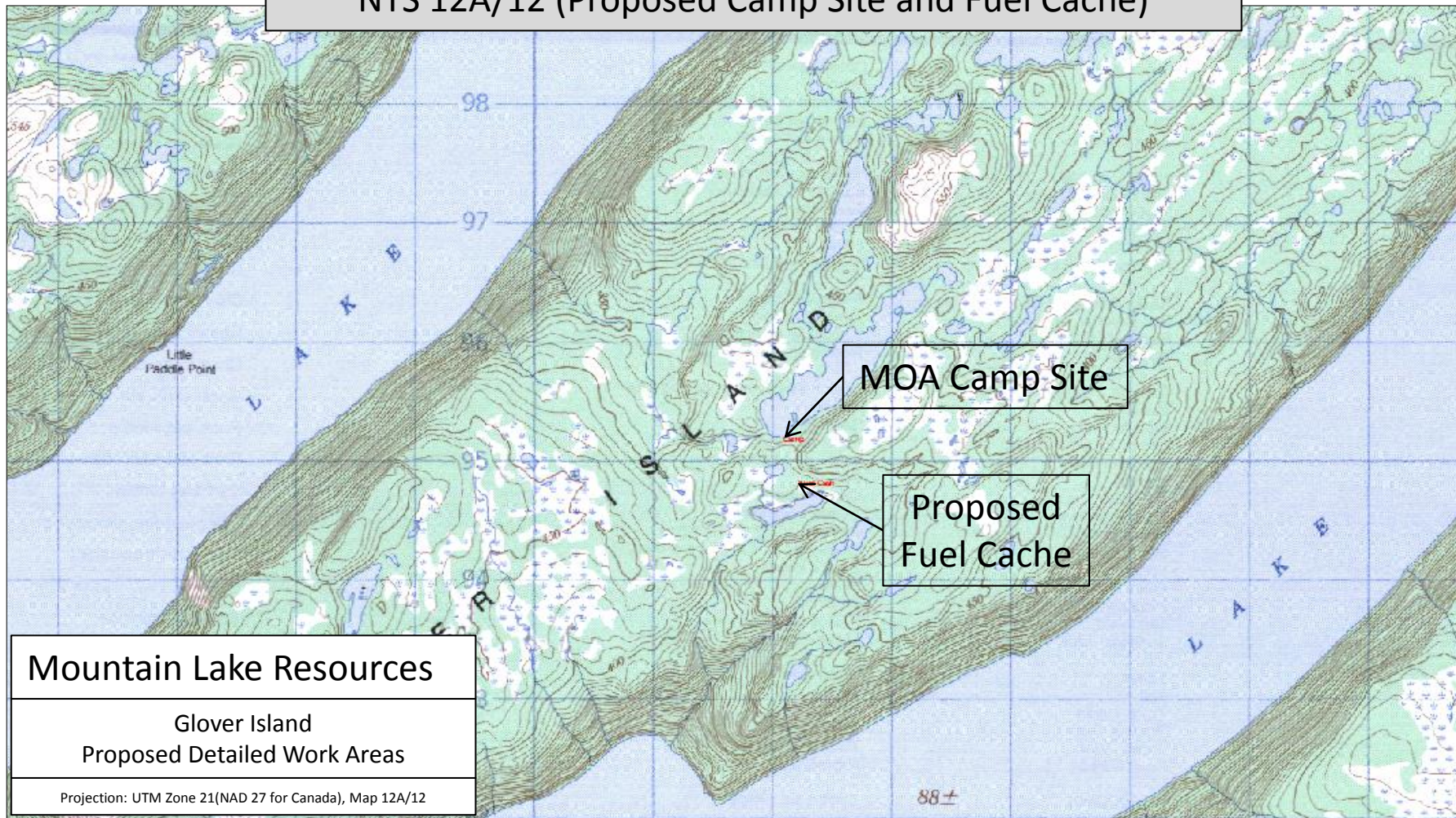
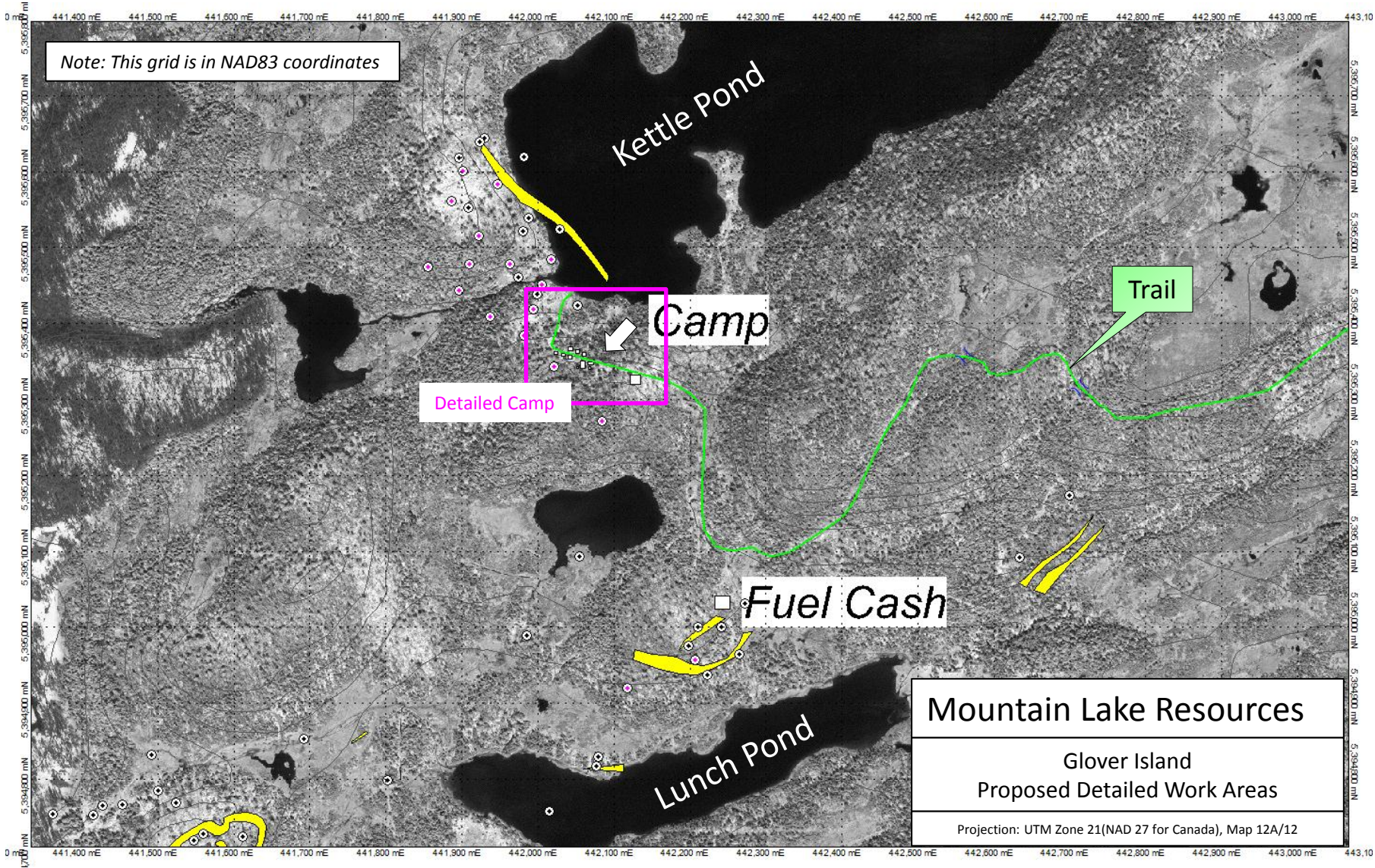


Figure 17

PROPOSED LOCATION OF MOA CAMP AND FUEL CACHE



Mineralized Horizon

Existing Drill Holes

Proposed MOA Drilling

Figure 18

MOA CAMP LAYOUT and HELICOPTER PAD

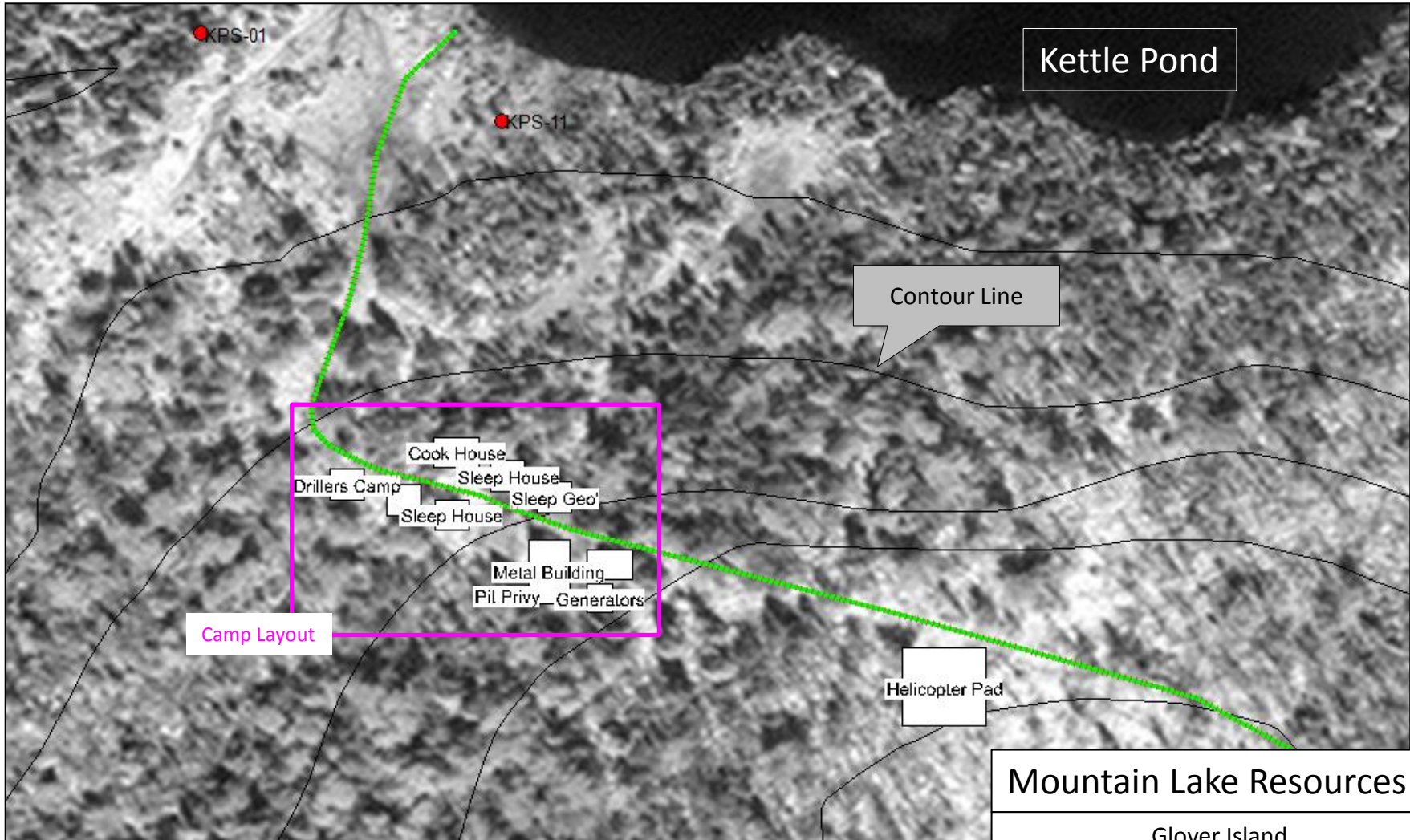
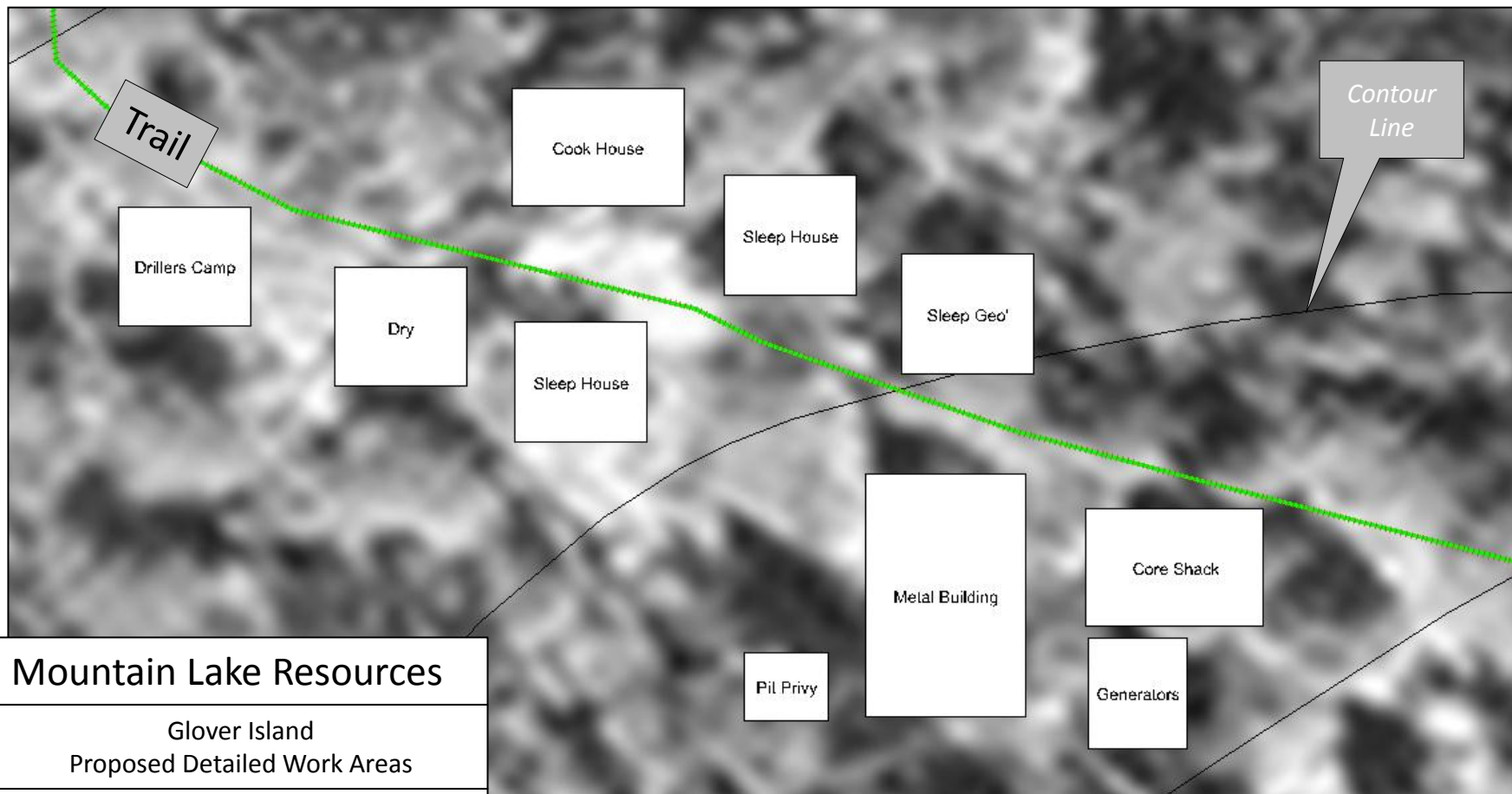


Figure 19

Mountain Lake Resources
Glover Island
Proposed Detailed Work Areas
Projection: UTM Zone 21(NAD 27 for Canada), Map 12A/12

CLOSE-UP OF PROPOSED MOA CAMP LAYOUT



Mountain Lake Resources

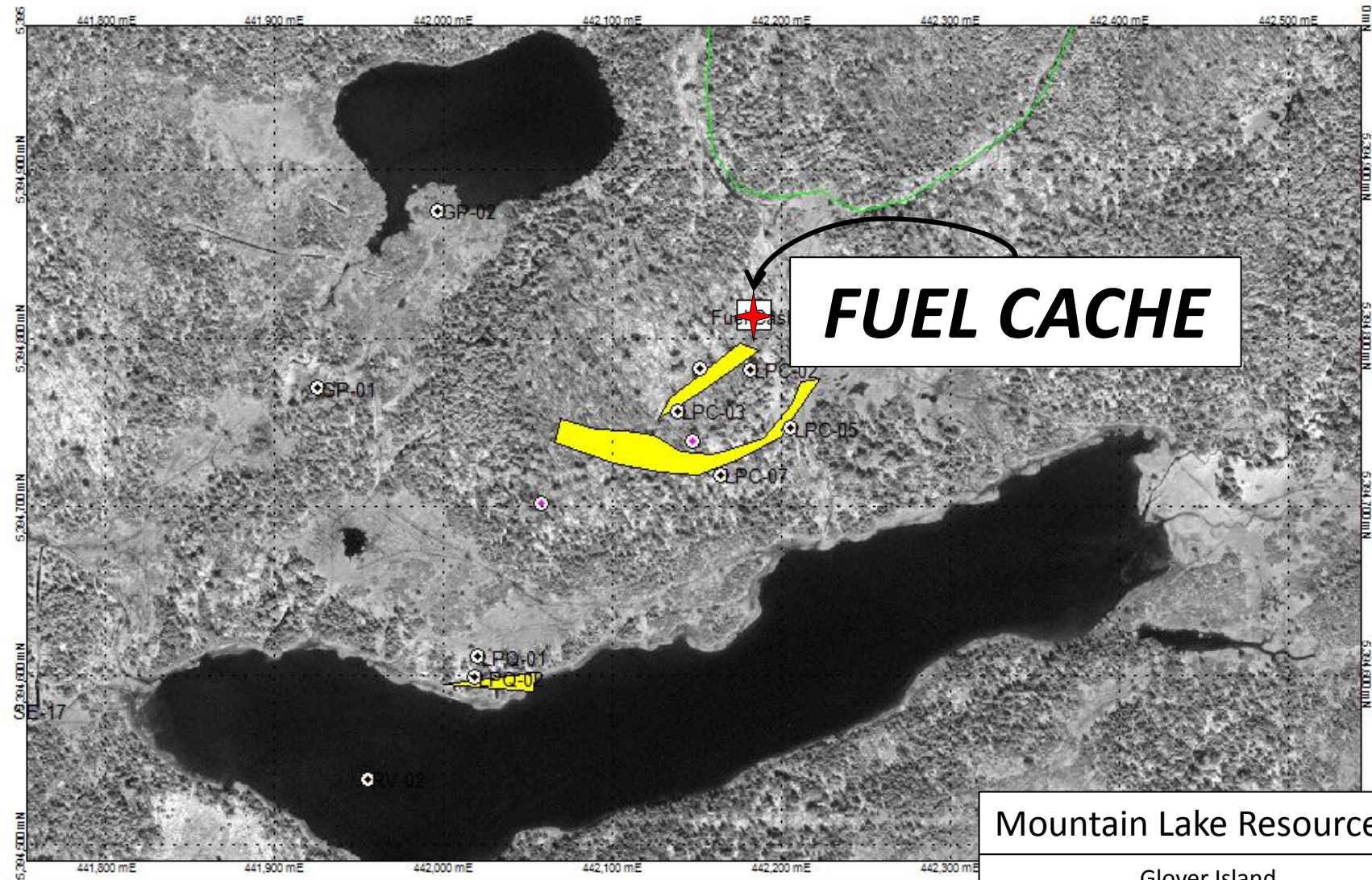
Glover Island
Proposed Detailed Work Areas

Projection: UTM Zone 21(NAD 27 for Canada), Map 12A/12

SCALE 0 5
meters

Figure 20

LOCATION OF MOA FUEL CACHE



Mountain Lake Resources
Glover Island
Proposed Detailed Work Areas
Projection: UTM Zone 21(NAD 27 for Canada), Map 12A/12

Figure 21

FUEL CACHE AREA



Camp

Fuel Cache

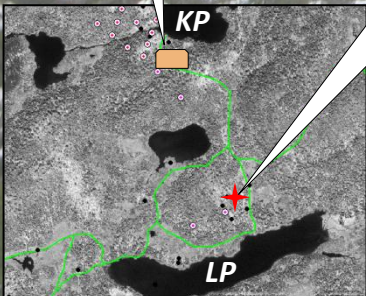


Figure 22

Mountain Lake Resources

Glover Island
Proposed Detailed Work Areas

Projection: UTM Zone 21(NAD 27 for Canada), Map 12A/12

FUEL CACHE AREA



Mountain Lake Resources

Glover Island
Proposed Detailed Work Areas

Projection: UTM Zone 21(NAD 27 for Canada), Map 12A/12

Figure 23

SPILL CONTAINMENT BERMS



Figure 24

Conventional Honda Quad

(not on Glover Island)



Figure 25



Tracks left by a typical ATV

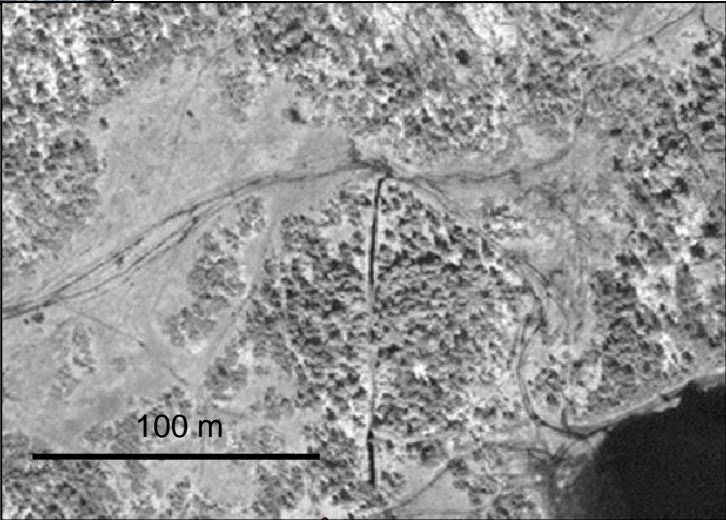


Figure 26

Duralite 800 Track Mounted Diamond Drill



Figure 27

Mountain Lake Resources

Glover Island
Proposed Detailed Work Areas

Projection: UTM Zone 21(NAD 27 for Canada), Map 12A/12

Duralite 800 Track Mounted Diamond Drill



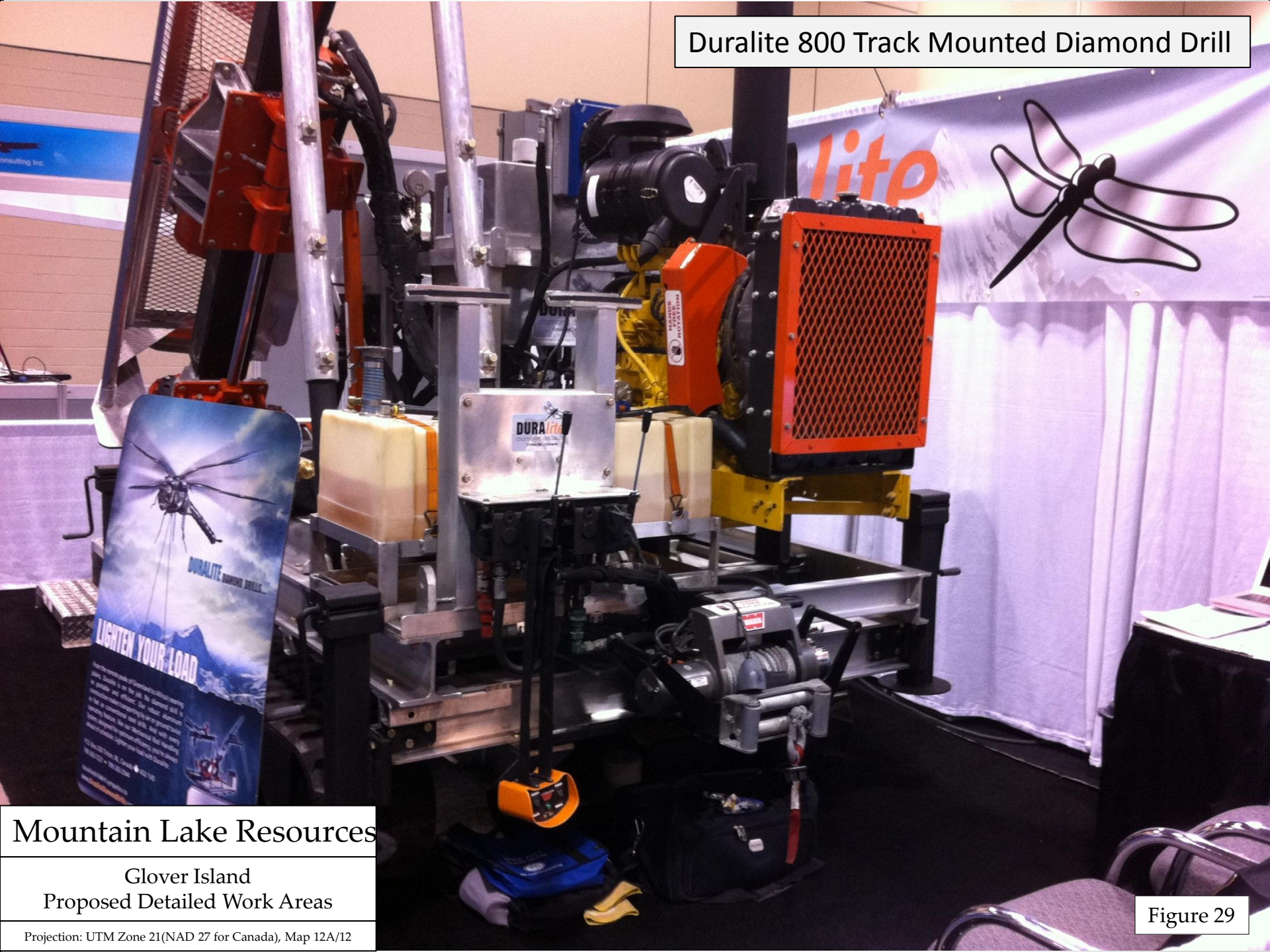
Mountain Lake Resources

Glover Island
Proposed Detailed Work Areas

Projection: UTM Zone 21(NAD 27 for Canada), Map 12A/12

Figure 28

Duralite 800 Track Mounted Diamond Drill



Mountain Lake Resources

Glover Island
Proposed Detailed Work Areas

Projection: UTM Zone 21(NAD 27 for Canada), Map 12A/12

Figure 29

Duralite 800 Track Mounted Diamond Drill



Figure 30

Mountain Lake Resources

Glover Island
Proposed Detailed Work Areas

Projection: UTM Zone 21(NAD 27 for Canada), Map 12A/12

Duralite 800 Track Mounted Diamond Drill



Figure 31

Mountain Lake Resources

Glover Island
Proposed Detailed Work Areas

Projection: UTM Zone 21(NAD 27 for Canada), Map 12A/12



Morooka All Terrain Track Vehicle



Figure 32

Mountain Lake Resources

Glover Island
Proposed Detailed Work Areas

Projection: UTM Zone 21(NAD 27 for Canada), Map 12A/12



CAMOPLAST TATOU
TRACK SYSTEM

http://www.camoplast.com/en/tracksystem/atv_track_systems/tatou_4s_description.php



Mountain Lake Resources

Glover Island
Proposed Detailed Work Areas

Projection: UTM Zone 21(NAD 27 for Canada), Map 12A/12

Figure 33

Mountain Lake Res. Inc. Track Equipped Quad



Mountain Lake Resources

Glover Island
Proposed Detailed Work Areas

Projection: UTM Zone 21(NAD 27 for Canada), Map 12A/12

Figure 34

Mountain Lake Res. Inc. Track Equiped Quad



Figure 35

Mountain Lake Resources

Glover Island
Proposed Detailed Work Areas

Projection: UTM Zone 21(NAD 27 for Canada), Map 12A/12

Mountain Lake Res. Inc., (small excavator)



Mountain Lake Resources

Glover Island
Proposed Detailed Work Areas

Projection: UTM Zone 21(NAD 27 for Canada), Map 12A/12

Figure 36

Mountain Lake Res. Inc., (small excavator)



Figure 37

Mountain Lake Resources

Glover Island
Proposed Detailed Work Areas

Projection: UTM Zone 21(NAD 27 for Canada), Map 12A/12

Pine Marten References

