

ENVIRONMENTAL ASSESSMENT REGISTRATION

LABRADOR HUNTING AND FISHING ASSOCIATION INC. SHOOTING RANGE

Submitted to:

**Department of Environment and Conservation
Environmental Assessment Division**

13 February 2012

ENVIRONMENTAL ASSESSMENT REGISTRATION

**Labrador Hunting and Fishing Association Inc.
Shooting Range**

Prepared for:
Department of Environment and Conservation
Environmental Assessment Division
P.O. Box 8700
St. John's, NL
Canada
A1B 4J6

Prepared by:
Labrador Hunting and Fishing Association Inc.
c/o Tony Chubbs, President
P.O. Box 171, Station C
Happy Valley-Goose Bay
A0P 1C0

13 February 2012

TABLE OF CONTENTS

1.0 NAME OF THE UNDERTAKING.....	1
2.0 PROPONENT.....	1
2.1 Name of Corporate Body.....	1
2.2 Address	1
2.3 Contact	1
2.4 Principal Contact Person for Purposes of Environmental Registration	1
3.0 THE UNDERTAKING.....	1
3.1 Nature of the Undertaking	1
3.2 Need for the Undertaking	2
4.0 DESCRIPTION OF THE UNDERTAKING	2
4.1 Geographic Location	2
4.2 Physical Features of the Undertaking	3
4.3 Construction Activities	5
4.3.1 Potential Source of Pollutants during Construction	6
4.3.2 Mitigation Measures during Construction	6
4.4 Operations.....	7
4.4.1 Potential Source of Pollutants during Operations.....	8
4.4.2 Mitigation Measures during Operations.....	8
4.5 Potential Valued Ecosystem Interactions and Mitigation.....	9
4.5.1 Resource Conflicts	9
5.0 EMPLOYMENT.....	10
5.1 Construction Phase	10
5.2 Operational Phase.....	11
6.0 APPROVAL REQUIRED FOR THE UNDERTAKING	11
7.0 BACKGROUND INFORMATION	12
7.1 Summary of Findings.....	12
8.0 SCHEDULE FOR RELEASE FROM ENVIRONMENTAL ASSESSMENT.....	12
9.0 FUNDING.....	12

APPENDICES

Appendix A Figures

Appendix B Letters of Support

1.0 NAME OF THE UNDERTAKING

LABRADOR HUNTING AND FISHING ASSOCIATION INC.
SHOOTING RANGE

2.0 PROPONENT

2.1 Name of Corporate Body

LABRADOR HUNTING AND FISHING ASSOCIATION INC.

2.2 Address

Labrador Hunting and Fishing Association Inc.
c/o Tony Chubbs, President
P.O. Box 171, Station C
Happy Valley-Goose Bay
A0P 1C0

2.3 Chief Executive Officer

Name: Tony Chubbs
Official Title: President
Address: P.O. Box 171, Station C, Happy Valley-Goose Bay, NL A0P 1C0
Telephone #: (709) 896-2691
Fax #: (709) 896-6955

2.4 Principal Contact Person for Purposes of Environmental Registration

Same as **Contact** at 2.3

Name: Tony Chubbs
Official Title: President
Address: P.O. Box 171, Station C, Happy Valley-Goose Bay, NL A0P 1C0
Telephone #: (709) 896-2691
Fax #: (709) 896-6955

3.0 THE UNDERTAKING

3.1 Nature of the Undertaking

The proposed project is to construct a 600 m Rifle Range, near Happy Valley-Goose Bay, Labrador, NL in the District of Lake Melville. The range will be owned by the Labrador Hunting and Fishing Association Inc. (LHAFA) which was formed on 11 November 2010 and incorporated as a Not-For-Profit Charitable organization on 9 December 2010. The range is integral to the residents of the Lake Melville region as there has never been a certified/approved shooting range in the area. This facility will be

of great value to all residents of Labrador as it will form the cornerstone venue for cultural events using firearms such as the Labrador Winter Games.

Our mandate is to represent our membership in promoting and enhancing outdoor recreational activities, including, but not limited to, recreational Shooting Activities. Currently the LHFA has over 250 members the majority of which are interested in having access to an approved Shooting Range for safety reasons, sighting in of firearms, and for recreational competition use.

The current proposed option falls partially within the boundaries of the Town of Happy Valley-Goose Bay, NL. in the vicinity of Wilbourne Bay Road in an area designated as Rural and approved for use as a Shooting Range by both the Town of Happy Valley-Goose Bay and Municipal Affairs. The LHFA intends to fully develop a Federally Certified Shooting Range starting in May 2012.

The Rifle Range will consist of the following components:

1. Gravel Access Road
2. Administration/Storage Building
3. Sheltered Shooting Stand
4. 600 m Shooting field
5. Target holders
6. Signage on border of danger zone indicating location of rifle range
7. Back Stop (bullet catch)
8. Gravel parking Lot
9. Safety Area Template (permit to occupy)

The newly constructed gravel access road will be gated for security control. The site will consist of a single wood construction building and sheltered shooting stands at the head of a 600 m field, with a back stop (bullet catch) and target holders at the opposite end. The back stop and entrance will have safety flags. There will be a small gravel parking area next to the gated entrance large enough to hold approximately 10 vehicles (See Appendix A, Figure 1). The 600 m range development area will be a Crown Land Lease. The safety area template (approximately 4 Km²) will be a permit to occupy from Crown Lands and will have signage every 20m-30m indicating the boundaries of the rifle range for safety.

3.2 Purpose/Rational/Need for the Undertaking

Central Labrador has never had a provincially licensed and approved outdoor Shooting Range. This situation has caused and currently poses an enormous Safety Hazard to the residents of the Lake Melville region and poses a significant safety concern and liability risk for individual residents, the Town of Happy Valley-Goose Bay and the Province of NL. Currently, gun owners sight-in their firearms within the town boundaries of Happy Valley-Goose Bay, along side major highways, in abandoned rock quarries, sand pits and areas which have access roads, walking paths and ATV trails. All these areas are uncertified, uncontrolled and extremely hazardous to the general public. A designated, safe and regulated Shooting Range is the solution.

The undertaking will provide a place that is designed for the safe discharge, on a regular and structured basis, of firearms for the purpose of target practice for local enforcement officials including the Royal Canadian Mounted Police (RCMP), wildlife and fisheries officers, the provincial Department of Justice, officers from the Department of Fisheries and Oceans, the Department of National Defence (DND), members of the Labrador Hunting and Fishing Association Inc. Rifle Range Club, other Rod and Gun Clubs, the Labrador Winter Games Athletes and other recreational users. There are currently no operating rifle ranges in the Happy Valley-Goose Bay or central Lake Melville areas. The construction and operation of the facility will provide employment opportunities for local residents and create positive business spin offs in the local community.

4.0 DESCRIPTION OF THE UNDERTAKING

4.1 *Geographic Location*

The proposed rifle range will be located on the northern edge of the town limits of the Community of Happy Valley-Goose Bay in central Labrador.

1. The proposed location is approximately 100 m southeast off the North West River Highway (Route 510) and will run parallel to Welbourne Bay Road. The entrance road will be on the opposite side of route 500 across from the property of Goose River Lodges (owned by Mr. Marty Williams). The Shooting Range will be > 6 km from cabins at Welbourne Bay, >2 Km from any other cabin or farm area and > 3 Km from Gosling Lake.
2. The proposed location is > 5 KM from the nearest water shed area.
3. The proposed location will be accessible by means of a new road to be constructed, branching east from the existing road Route 510 which goes to the Town of North West River.
4. The proposed location takes in a total area of approximately 4 km². Within this area will be the cleared land for the 60,000 m² shooting field, parking area, access road and building locations. The remainder of the 4 km² will be the safety template which will not be cleared. (See Appendix A, Figure 2).

See The Newfoundland and Labrador Gazette, January 27, 2012, (Notice Of Intent, Lands Act, Chapter 36, S.N. 1991.) for a detailed location description.

4.2 *Physical Features:*

The development will consist of the following components:

1. Gravel Access Road
2. Main Administration/Club Building (30 x 60)
3. Storage Building (10 x 12)
4. Sheltered Shooting Stands
5. 60,000 m² Shooting field
6. Target holders
7. Signage on border of danger zone indicating location of rifle range
8. Stop Butt (bullet catch)
9. Gravel Parking Lot
10. Safety Area Template (4 km²)
12. Security Gate
13. Flag Poles

(See Appendix A, Figure 3)

Site Access

Access to the site will be by means of a newly constructed gravel access road which will extend from the North West River Road (Route 500) southeast to the Shooting Range Parking Lot (see Appendix A, Figure 2). The road will be graded gravel with all season access and will be approximately 100 m in length. A culvert will be installed where the access road meets Route 500 to ensure proper drainage. The Department of Transportation and Works have already been consulted.

Site Electricity and Telephone

Two-phase power would be required to service the site. Telephone and electricity lines would be installed along the site access road from the municipal hydro pole which runs adjacent to route 500. This would require the installation of only one or two power poles.

Site Buildings

There will be one main building (30 feet x 60 feet) located on the site. It will be located close to the gated entrance to the site and will function as an administration/club house building with kitchen and washroom facilities. The building will be a free standing wooden structure built on a concrete slab on grade. It will house the user's safety equipment, first aid kits, emergency response equipment, check-in desk, and storage of equipment required to operate and maintain the rifle range. In addition it would house an area for the storage and repairing of targets. Another 10 x 12 separate wooden structure will be constructed for storage of range material, safety equipment and garbage.

The building will be serviced with on-site water by means of a water well point and water storage tank with a separate septic field for sewage.

Waste Area

Located next to the storage shed would be a large garbage bin that will be bear proofed for on site garbage, which would be emptied after each day use and disposed of at the Happy Valley-Goose Bay approved landfill facility.

Physical Features of the Proposed Location

Based on topographic features, ground slope and the shape of the available land and surface features, the proposed location has been deemed suitable for this type of development. The following are key physical features of the site:

- The site is undeveloped, consists of an open black spruce lichen wooded area (burnt in 2005) and is relatively flat. It contains no commercial timber. Ground cover consists of dwarf birch, Kalmia, alders and willows. The entire site is located on sand substrate extending approximately 100 m deep providing excellent drainage. The construction area on leased land contains no streams or standing water. The safety template area has some marshy areas and an ephemeral stream that is dry during 10 months of the year.

- An access road is proposed to extend south from Route 500 for a distance of approximately 100 m.
- The proposed site boundary is > 10 Km from the nearest water shed area and over 300m from the nearest water body (Gosling Lake) or stream (See Appendix A, Figure 2).

4.3 Construction Activities

The proposed project is scheduled to begin in May 2012 and completed in September 2012.

Activities include the removal of vegetation, grubbing, and grading of soil material for the construction of the proposed structures on site. This will be required for the construction of free standing wood and buildings located close to the gated entrance of the site. There will be a gravel parking lot located next the building that will also require land clearing. The 60,000m² shooting field will require land clearing, removal of vegetation and site grading. Within this area there will be the construction of a sheltered shooting stand, located at the head of the shooting field and target stands located at the other end.

Realizing some impact is likely on certain areas, the proponent is committed to keeping those impacts to a minimum. During the construction and operation of the rifle range, all efforts will be made to preserve and conserve the natural environment. Vegetation will be maintained to provide natural buffer zones, and any exposed slopes will be stabilized with natural vegetation where possible. All construction activities will be conducted involving mitigation measures as per Section 4.3.2.

No resource conflicts are anticipated.

Vegetation Clearing

Potential concerns associated with vegetation clearing include loss of habitat, as well as sedimentation of watercourses. All vegetation clearing and associated activities will adhere to applicable acts, regulations, and permits. Also, mitigation measures will be implemented to reduce the potential effects of vegetation removal. A cutting permit will be obtained prior to the start of any site clearing. Clearing and removal of trees will be restricted to the minimum areas needed for the site requirements and will not be outside the permitted limits. Vegetation will only be cleared for the 60,000 m² shooting field, the building locations, the parking area and access road. The remaining natural environment surrounding the site will serve as the safety template/buffer zone and will be left in its natural state. Limits of clearing will be as shown in Appendix A, Figure 3. Disposal of cleared timber and slash will be in compliance with the Forest Fire Regulations, Environmental Code of Practice for Open Burning, and the Permit to Burn.

Grubbing and Disposal of Related Debris

There is no concern associated with grubbing or the potential effects of erosion on freshwater ecosystems. All grubbing and disposal of related debris will adhere to relevant regulatory requirements.

Grubbing activities shall be minimized where possible and limits of stripping shall be as

shown in Appendix A, Figure 3. Measures will be implemented to minimize and control runoff of sediment-laden water during grubbing, and the re-spreading of the grubbed material. Erosion control measures will be implemented in areas prone to soil loss. Grubbed materials will be stockpiled for use in other areas of the project. Areas used for stockpiling will not be adjacent to any water bodies.

Filling, Excavation, Embankments, and Grading

Excavation, embankment, and grading will only be completed upon conclusion of grubbing and stripping. Where engineering requirements do not require grubbing and stripping, filling shall occur without any disturbance to the vegetation or upper soil horizons. Excavation, embankment, and grading shall be done in a manner that ensures that minimizes erosion in the area.

4.3.1 Potential Source of Pollutants during Construction

The potential sources of pollutants are generally those associated with land development and construction. Adherence to permit conditions and application of sound construction practices will protect against the release of pollutants into the surrounding environment. Strict monitoring and sound construction practices will control activities to minimize risks associated with:

- Silt and sediment
- Dust
- Construction debris
- Risk of fuel, lubricant and hydraulic fluid release
- Airborne emissions from construction equipment
- Noise pollution from construction activities

4.3.2 Mitigation Measures during Construction

Mitigation measures to reduce the environmental concerns associated with construction activities include:

- Silt laden runoff from construction areas will not be permitted to discharge directly into any body of water or watercourse. Silt fence construction of filter fabric will be used where necessary to preclude release of construction water directly into any body of water. The measures will include a natural vegetation buffer.
- Efforts will be made to minimize dust generation during the construction phase of the project. Dust from construction activities will be controlled using applicable guidelines from the Department of Transportation and Works.
- Solid waste disposal practices will be in compliance with the *Environmental Protection Act* and associated regulations. Any construction debris generated during the course of the project will not be permitted to be disposed of on site, but will be contained on site for disposal at a municipal solid waste disposal facility. Where possible, construction waste will be recycled.
- All machinery will be inspected for leakage of lubricants or fuel and must be in good working order. Any accidental spills or leaks will be promptly contained, cleaned up, and reported to the 24-hour environmental emergencies report system (1-800-563-2444).
- All fuel handling and storage will be in compliance with *The Storage and Handling of Gasoline and Associated Products Regulations*. Also, to minimize the risk of fuel,

lubricant or hydrocarbon release, construction equipment will not be permitted to be refueled within 30 m of any water body. If fuel storage is necessary, it will be stored only in approved containers with all necessary permits in place. Basic petroleum spill clean-up equipment will be on-site and made accessible to all contractors and/or employees.

- Equipment exhaust systems will be maintained to provide emissions meeting the standards designed for the equipment by the manufacturer.
- Exhaust systems will be maintained to ensure noise levels are within the design specifications of the machinery.

4.4 Operations

The proposed Rifle Range is estimated to begin operations in September 2012 and be operational for approximately a 50-year period. The following provides a summary of the operations of the facility. The proposed rifle range will be available for use to RNC, RCMP, wildlife and fisheries officers, DND officials and registered public during the predetermined hours of operation. Upon arrival each person must check in with the site official at the registration building. They can proceed to the shooting area after their rifle and safety equipment has been approved by the Range Safety Officer (RSO). The shooting area has specific safety regulations that will be strictly enforced and monitored. All operational activities will be conducted involving mitigation measures as per Section 4.4.2

4.4.1 Potential Source of Pollutants during Operations

The potential sources of pollutants during operations will consist of those associated with daily operations and on-site maintenance. Strict monitoring and mitigation practices will control activities to minimize risks associated with:

- Silt and sediment
- Dust
- Sewage
- Risk of heating fuel and/or petroleum release
- Metal casing/shell debris (lead core)
- Noise pollution from daily activities
- Scattered debris

4.4.2 Mitigation Measures during Operations

The operation will be conducted in a fashion which protects public health and safety, minimizes fire hazard, does not create a nuisance to adjacent areas, and will not contaminate ground or surface waters off-site. All mitigation measures for vehicle use and silt/sediment controls that were implemented during the construction phases will also apply during operation of the facility. In addition, the following mitigation measures will be implemented during operation of the site to address potential impacts:

Removing Waste – All liquid waste generated on site will be contained in an underground septic field. All range users will be responsible for removing their own waste before leaving the facility.

Site Access – Public access to the site is to be controlled so that the general public does not have direct access to the facility unless accompanied by club members and/or a RSO in good standing.

Dust Control Program – Roads shall be properly maintained and dust control programs implemented as required.

Fire Safety Program – Develop fire safety program in consultation with the local fire department and, where required, the Department of Natural Resources.

Groundwater / Surface Water Monitoring Program – Where required, surface water control measures will be implemented to minimize the impact on the environment from the construction activities and general operation of the Range. The basic element of surface water controls is to maintain post-development flow rates at pre-development levels and not to alter the pre-development water quality. It is important to minimize the contact between sediment and surface water by:

- constructing ditches to intercept and divert surface water from areas of sediment;
 - constructing temporary measures to separate surface water from high traffic areas;
- In order to minimize the impact of lead on the surrounding environment from the lead core bullets used, the stop butt will be cleaned regularly.

4.5 Potential Valued Ecosystem Interactions and Mitigation

4.5.1 Resource Conflicts

Fish & Fish Habitat

No bodies of water were identified within the shooting field proposed for clearing. There is a small ephemeral stream located north east of the shooting field but is not considered fish habitat. No environmental conflicts are expected. Construction activities will be conducted in such a manner as to prevent the release of sediment or other deleterious materials into potential water bodies. These measures are discussed in previous sections.

Wildlife

Noise will be generated on site; it is expected to be periodical and therefore not expected to create a concern for wildlife in the area. The shooting field will be sufficient size to allow users to fire their weapons without causing any wildlife conflict.

Forestry

The site is comprised of open Black Spruce-Lichen Forests that have been burnt within the past 5 years. Construction activities will be such as to minimize the clearing of the forested areas. The majority of the forested area surrounding the rifle range will remain untouched to provide a danger area/ buffer zone in the safety template.

Adjacent Areas

During operations, maintenance equipment will be confined to the areas of the site and will not be permitted in adjacent areas in order to conserve their natural state.

Human Activities

Human activities will place little demand on the local services available; however, these activities are expected to have a positive economic impact. Safety measures will be taken to ensure that any persons around the proposed rifle range boundary will be protected by the danger area/buffer zone surrounding the rifle range. Every 20m-30m on the perimeter of the Safety Template there will be safety signage indicating the boundaries of the rifle range to ensure that any human activities in the area will have no conflict with the rifle range. There is no expected conflict with the surrounding natural

environment, as site-related activities will be conducted within the boundaries of the rifle range.

5.0 EMPLOYMENT

5.1 Construction Phase

It is expected that approximately five (5) people may be employed during the construction phase of the proposed Rifle Range depending on funding sources. These employees would include a Construction Managers, Land Surveyor, Contractors & Supervisors, Truck Drivers and Heavy Equipment Operators. The construction of the administration building would require Contractors and Supervisors, Carpenters, Plumbers and Electricians. Summer students may also be employed temporarily. No hazardous occupations are planned. The LHAFA is an equal opportunity employer.

5.2 Operational Phase

It is expected that a one (1) person may be employed seasonal full time during the facilities operational phase with the potential for 2 part-time employees in the future. One Range Safety Officer will supervise students with registration, safety and monitoring.

6.0 APPROVAL OF THE UNDERTAKING

The permits, approvals, and authorizations that may be necessary for the undertaking Include but may not be limited to the following:

- Approval for the Undertaking Minister of Environment and Conservation
- Federal Range Certification Canadian Firearms Office
- Approval under the National Building Code of Canada
- Building Accessibility Design Registration, Public Buildings (approval)
- Approval of Septic System Design
- Approval under the National Fire Code of Canada
- Electrical Permit
- Department of Government Services Crown Lands Application No.: 139182, Type: Grant, Purpose: Commercial (Provincially Certified Shooting Range), Location: North of Welburn Bay Road, (Application originally made 4 May 2011, Accepted 25 August 2011, Refused 7 November 2011, **Reactivated 29 December 2011**).
- Department of Government Services Crown Lands Application No.: 139183, Type: Licence to Occupy, Purpose: Shooting Range Safety Template), Location: Welburn Bay Road, HVGB (Application originally made 4 May 2011, Accepted 25 August 2011, Refused 7 November 2011, **Reactivated 29 December 2011**).
- Crown Lands, Application for Grant Pursuant to Lease/Permit to Occupy Crown Land ; **The Newfoundland and Labrador Gazette, vol. 87, No. 4, January 27, 2012, (Notice Of Intent, Lands Act, Chapter 36, S.N. 1991.)**
- Advertised Notice of Intent, The Labradorian **Published 30 January 2012.**
- Advertised Notice of Intent, The Telegram **Published 28 January 2012.**
- Approval Town of Happy Valley-Goose Bay Council and Municipal Planning Committee (**Approval Granted 24 April 2011**).
- Permit to Burn Forest Fire Protection Specialist, Department of Natural Resources

- Permit to Cut Crown Timber, Department of Natural Resources
- Department of Transportation and Works to install signage on Route 500 and for access road location and culvert installation (**Consultation Conducted**).
- Innu Nation Class III Lands Access. Letter of Approval from Grand Chief Joseph Riche (**attached**)

7.0 BACKGROUND INFORMATION

7.1 Summary of Findings

The undertaking will provide a place that is designed for the safe discharge, on a regular and structured basis, of firearms for the purpose of target practice for local enforcement officials and registered recreational users. The proposed location was chosen based on studies and projections that considered convenience to the users, local residents and governments, as well as the environmental impact it would have on the surrounding area. The subject property meets the size and location criteria established by the RCMP R12 Safety Area Template for Certified Shooting Ranges in Newfoundland and Labrador. The site access is feasible and will not interfere with any planned developments in the area. Several other sites were considered and rejected as they would require more environmental damage in creating longer road access, power line transmission corridors and greater distance from user groups. Other areas of consideration also had conflicts with other users including farmland, cabin owners and protected conservation areas as well as having streams considered as fish habitat.

8.0 SCHEDULE

Construction of this project is scheduled to begin in May 2012 with a completion date of September 2012. In order to meet this proposed scheduling, the requirements of the *Environmental Assessment Act* must be completed as soon as possible.

9.0 FUNDING

Financing of this project is expected from various government sources.

Much of the physical construction of the shooting range will be completed by volunteer members of the LHFA. The LHFA is working with the Central Labrador Economic Development Board (CLEDB) and have made application for three employees to be funded through the Job Creation Program. The Labrador Winter Games Committee have already made a commitment of funding with additional funds to follow pending approval. ACOA and INTRA are also being approached as funding sources. The total initial costs are not expected to exceed \$90,000.

6 February 2012

APPENDIX A

Shooting Range Site Application

Figure 1. Proposed Shooting Range schematic with RCMP R12 Safety Area Template for Certified Shooting Ranges in Newfoundland and Labrador.

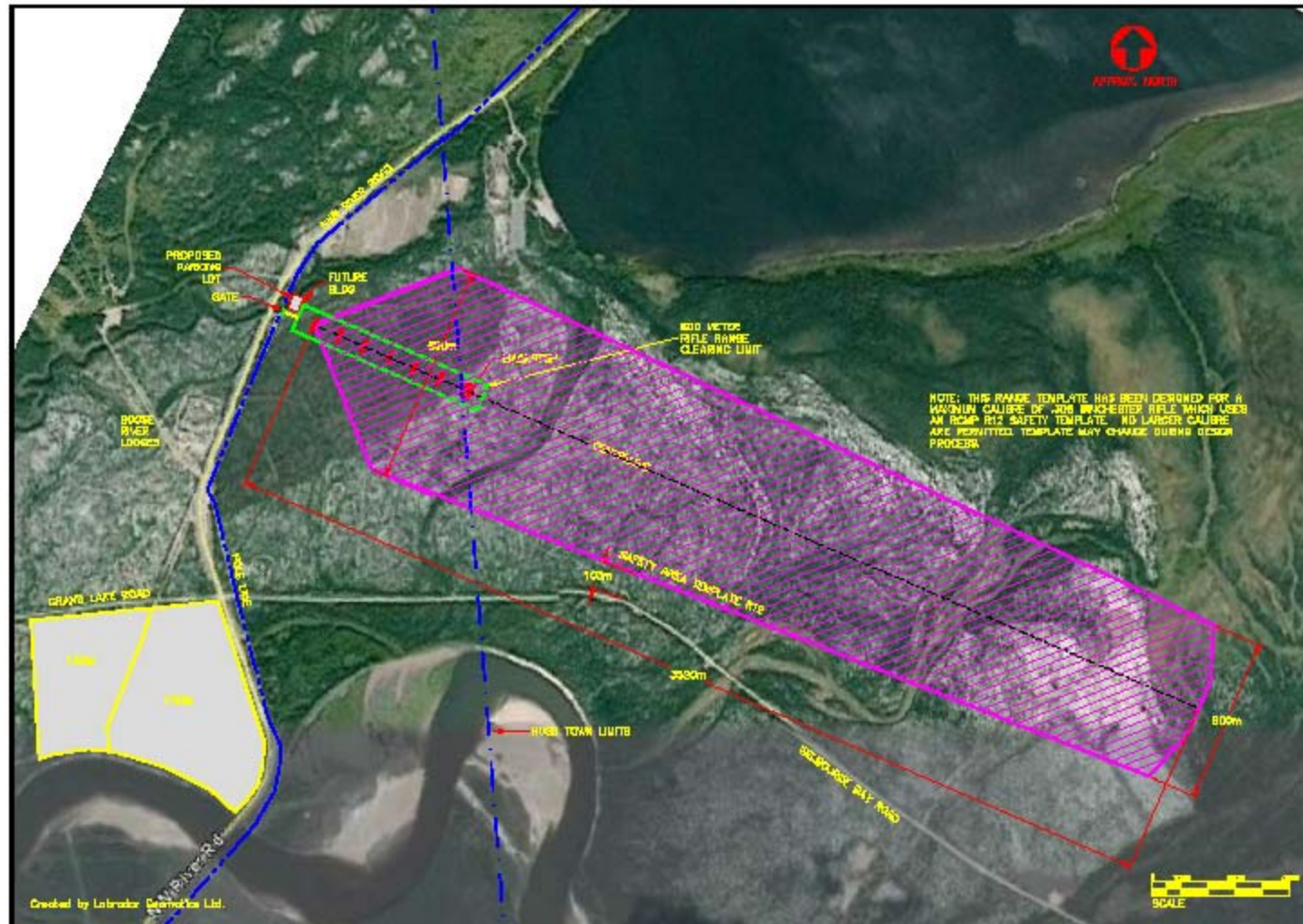
Figure 2. 1:50,000 Scale Topographic Map 13F/8 showing the location of the Shooting Range.

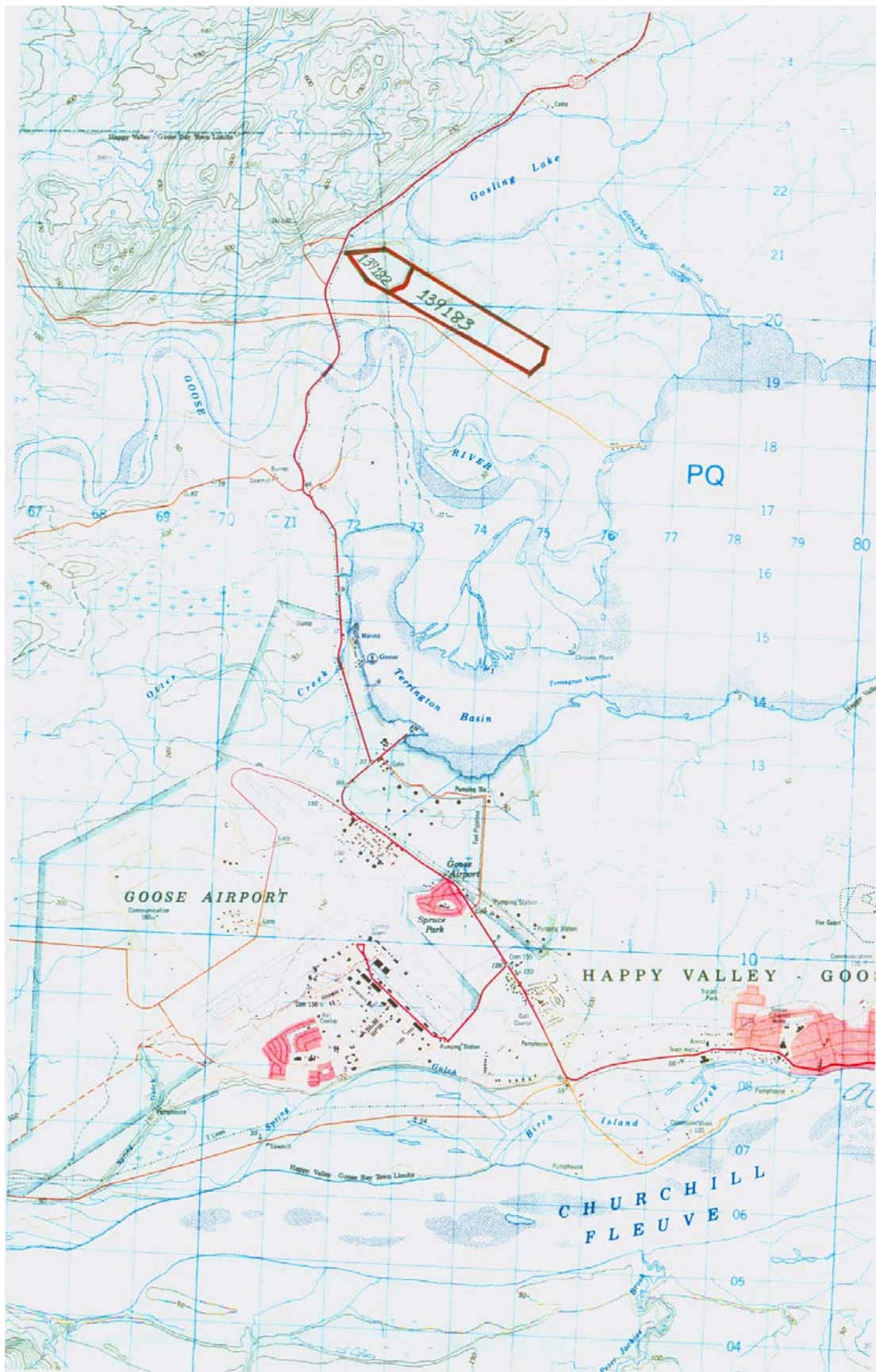
Figure 3. Crowns Lands 1:24,000 Topographic Map showing the Safety Area Template Licence to Occupy Application # 139183, 26 August 2011.

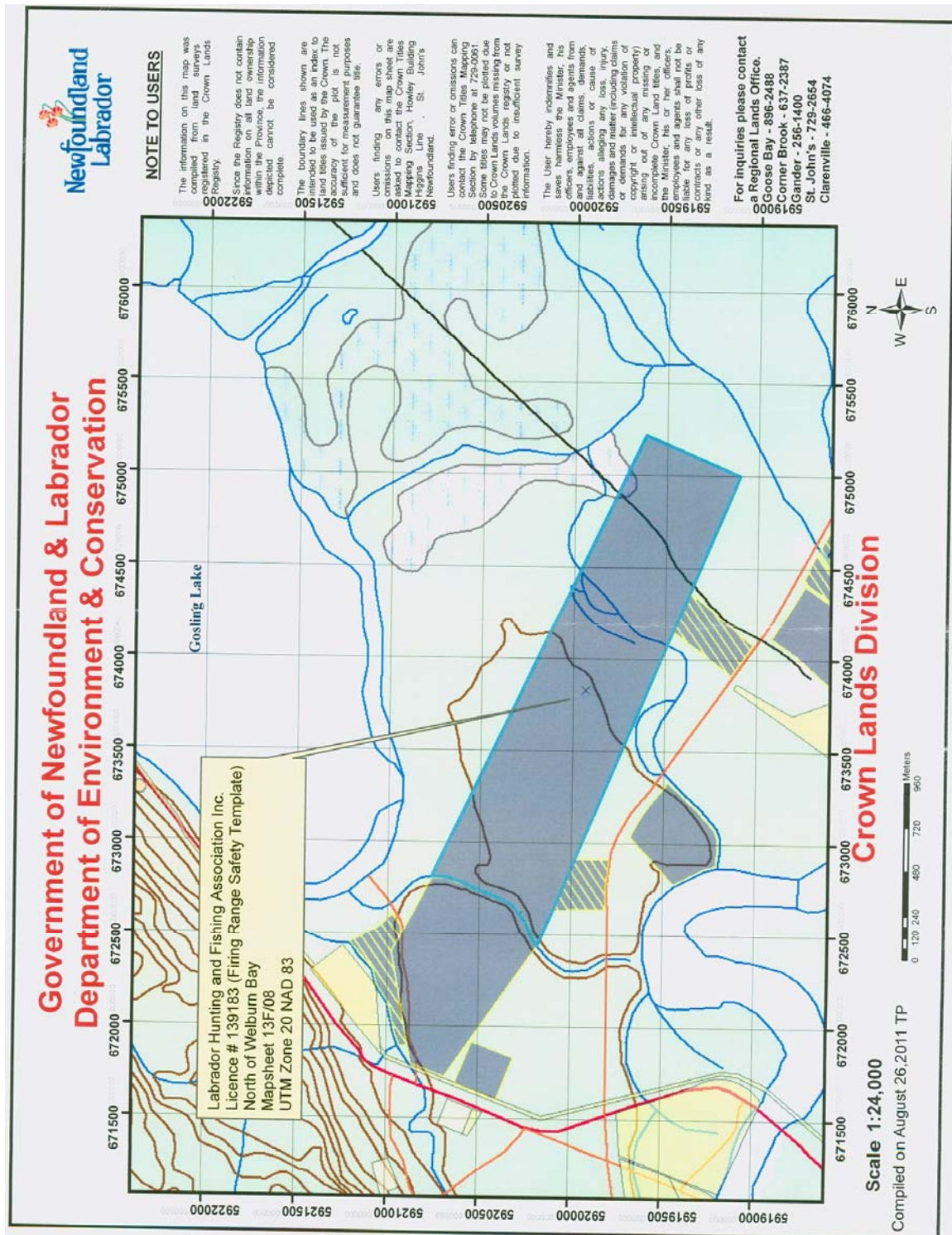
Figure 4. Crowns Lands 1:24,000 Topographic Map showing the Safety Area Template Grant Application # 139182, 26 August 2011.

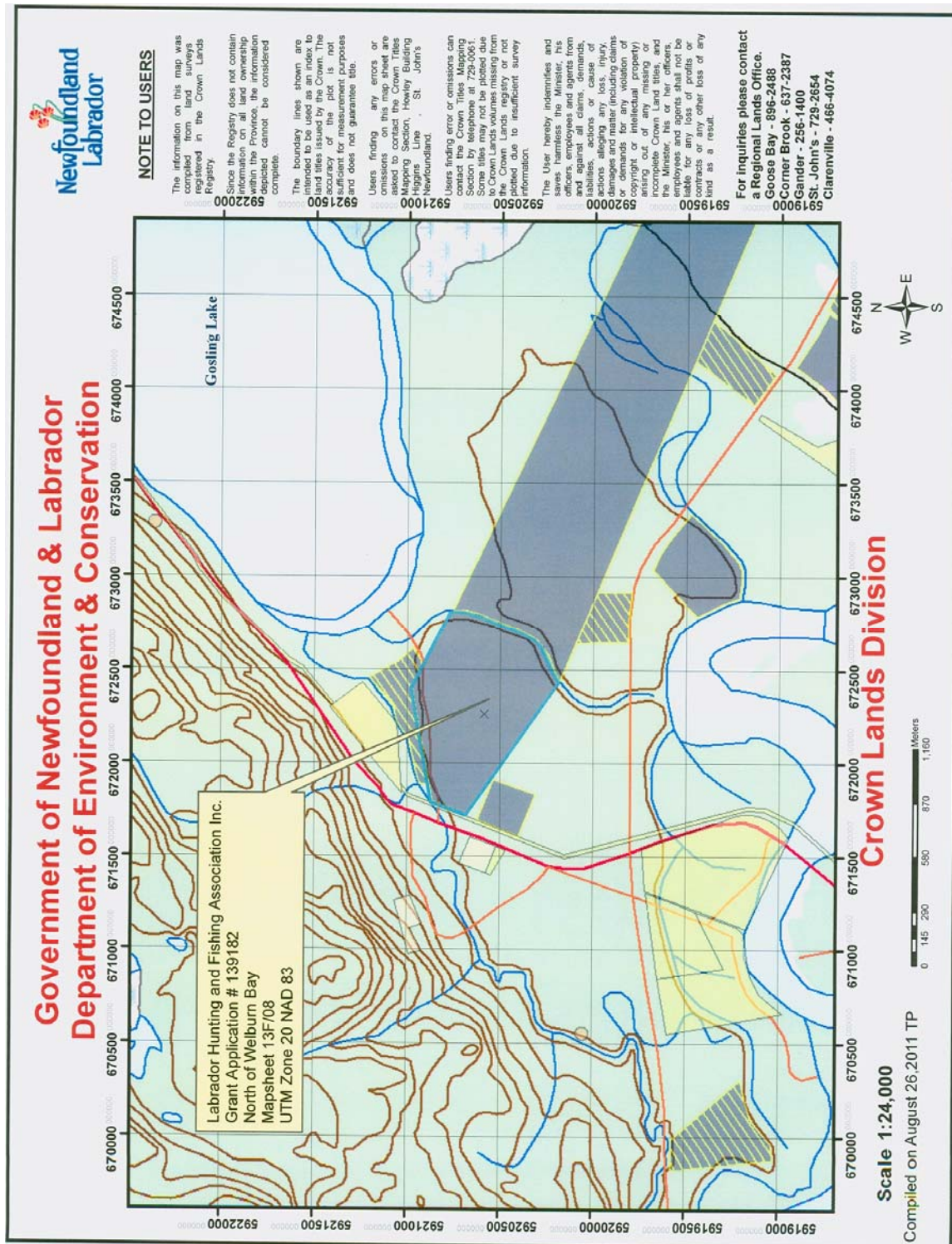
Figure 5. Crowns Lands 1:50,000 Topographic Map showing the Safety Area Template Grant Application 379, 26 August 2011.

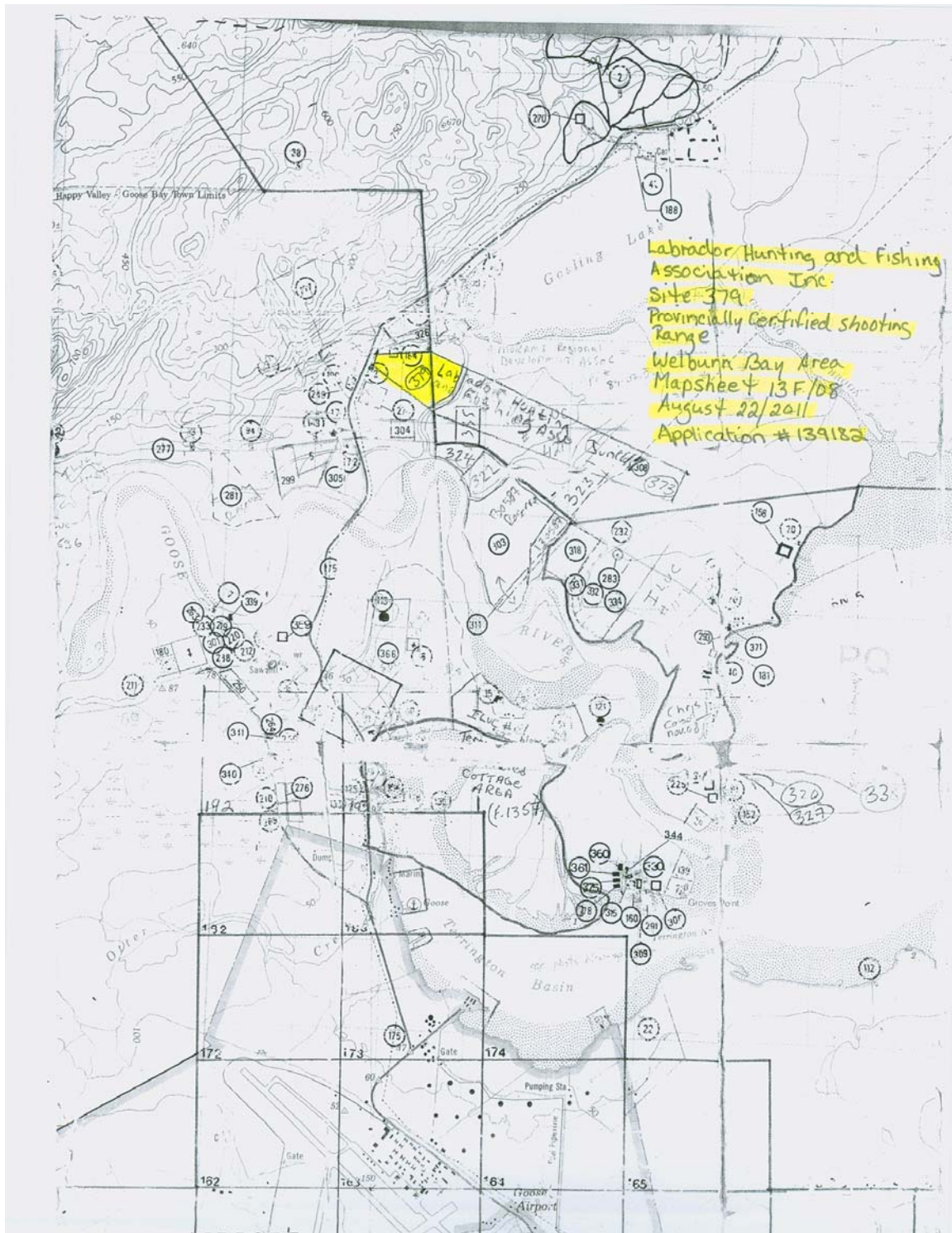
Figure 6. Crowns Lands 1:50,000 Topographic Map showing the Safety Area Template Licence to Occupy 373, 26 August 2011.

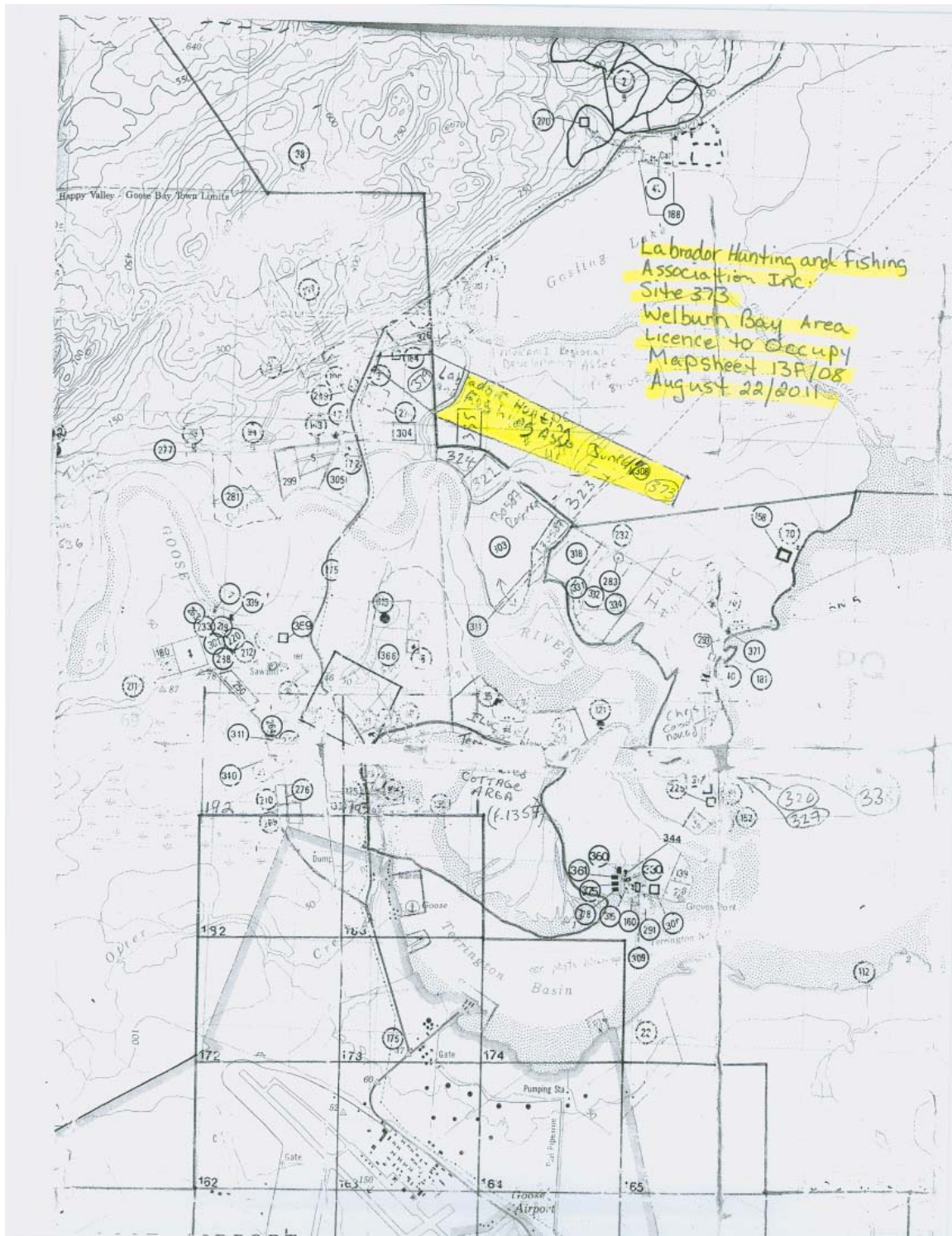












APPENDIX B

Letters of Support Attached

1. Royal Canadian Mounted Police (RCMP)
2. Innu Nation
3. Labrador Winter Games Committee
4. Department of Environment and Conservation, Wildlife Division

**Environmental Assessment Registration
Labrador Hunting and Fishing Association Inc.
Shooting Range**

13 February 2012



Royal Canadian Mounted Police
Gendarmerie royale du Canada

Security Classification/Designation
Classification/désignation sécuritaire

Unclassified

Sgt. Guy CAINES
Ops NCO
Happy Valley Goose Bay Detachment

Your File Votre référence

Whomever it may concern

Our File Notre référence

2011-04-11

Rod and Gun Club

To whom it may concern:

This is to confirm that Sgt Guy CAINES has had discussions with the Labrador Hunting and Fishing Association in relation to their plans to start a Rod and Gun Club in HVGB. The RCMP would support this initiative as it would assist with firearms safety in general as well as a facility to conduct training in our area.

GUY J CAINES, Sgt.
Operations NCO
Happy Valley Goose Bay Detachment

CAINES, GUY, SGT 40042

Canada

**Environmental Assessment Registration
Labrador Hunting and Fishing Association Inc.
Shooting Range**

13 February 2012



PO Box 186 Natuashish, Labrador, NL A0P 1A0 T 709 478 8755 F 709 478 8833
PO Box 119 Sheshatshiu, Labrador, NL A0P 1M0 T 709 497 8398 F 709 497 8937 www.innu.ca

April 12, 2011

Town of Happy Valley-Goose Bay
212 Hamilton River Road
P.O. Box 40 Station B
Happy Valley-Goose Bay, Labrador A0P 1E0

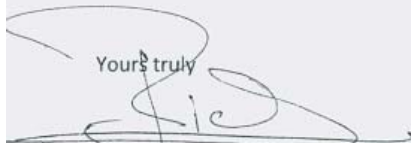
Labrador Hunting & Fishing Association

Dear Mayor Abbass;

I am writing to confirm the support of the Innu Nation with respect to the request by the Labrador Hunting and Fishing Association to establish a shooting range next to Gosling Park. We have reviewed the proposal put forward by the Association and we are comfortable with either of the options they have put forward.

We have reviewed their proposal for possible conflicts with our proposed Land Claim Settlement and the agreement we have reached with the Province of Newfoundland and Labrador on land selection. In this regard, we see no conflict between our land selection and this proposed venture.

If you have any questions with respect to the above, please contact me.

Yours truly


Joseph Riche

Grand Chief



2010 LABRADOR WINTER GAMES

P.O. BOX 220, STATION "C"
HAPPY VALLEY-GOOSE BAY
LABRADOR, A0P 1C0
(709) 896-8777

Labrador Hunting and Fishing Association
P.O. Box 171, Station C
Happy Valley-Goose Bay, NL
A0P 1C0

May 12, 2011

Dear Mr. Chubbs

Thank you for your letter dated March 31, 2011, regarding the Labrador Winter Games Board of Directors Inc. providing financial assistance for a new Rod and Gun facility. The Board has agreed to release funds of \$5000 subject to the following conditions:

1. Approval from Crown Lands for title to the land.
2. Confirmation of other funding sources involved in the project.
3. Provide the Board with an update on the project prior to the next Labrador Winter Games in 2013.
4. All federal, provincial and municipal laws and regulations (including environmental regulations) shall be complied with for the duration of the project which includes the acquisition of necessary permits.

As soon as these conditions are adhered too and agreed upon, the funds will be released to the Labrador Hunters and Fishers Association. The Board of Directors is pleased to contribute to this endeavour as it will enhance the infrastructure required to host the 2013 Labrador Winter Games. All the best in your planning for this much needed facility.

Sincerely,

Joe Goudie
Chair
Labrador Winter Games



Government of Newfoundland and Labrador
Dept. of Environment & Conservation

February 16, 2011

Labrador Hunting and Fishing Association Inc.
Happy Valley-Goose Bay, NL

To Whom It May Concern,

It has recently come to our attention that the Labrador Hunting and Fishing Association (LHFA) has begun efforts to start a Rod and Gun Club in the Happy Valley-Goose Bay area. The Conservation Services Section of the Wildlife Division would like to acknowledge support for this initiative for the reasons detailed in this letter.

First and foremost would be that the public will benefit enormously from having a safe, structured environment in which people can discharge their firearms. One of the programs administered by our Section involves delivery of the Firearms Safety/Hunter Education Course (which all provincial residents must complete before hunting with a firearm in Newfoundland and Labrador). An important objective within the program is encouraging people to practice using their firearms before heading into the field to hunt. Ideally we direct them to use their local Rod and Gun Club, and even encourage them to become members. However, in cases where they do not have ready access to these facilities, hunters are responsible to find a safe location such as a gravel pit to do this. Having a Gun Club in your region would allow individuals to take advantage of an area dedicated to this type of activity.

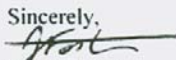
We have several Firearms Safety/Hunter Education Instructors living in the Happy Valley-Goose Bay region and they may be keen to use Rod and Gun Club facilities to hone skills on a practical level that they teach from week to week.

This facility would cater to events such as organized shoots and competitions such as the Labrador Winter Games. The Wildlife Division actively partners, when possible, with Rod and Gun Clubs on events such as Becoming an Outdoors-Woman and Youth Hunter Skills Workshops. Further information on these programs can be found in the 2010-11 Hunting and Trapping Guide available online at <http://www.env.gov.nl.ca/env/wildlife/hunting/hunttrap.pdf>. Programs such as these are great recruitment tools for encouraging young people and new individuals to get involved in hunting or the shooting sports. This is important in light of declining participation rates in hunting, not only in Newfoundland and Labrador, but right across Canada. These programs are also a great way to recruit new members into a Rod and Gun Club.

In September 2010 I had the privilege of working alongside Mr. Derek Leboubon, Mr. Steven Michelin and Mr. Murray Perrett to introduce 16 ladies to rifle and shotgun shooting. To see the joy on their faces after successfully shooting a gun for the first time, and then going on to bust clay pigeons and hit targets with consistency and accuracy, was an amazing experience.

In closing, the Wildlife Division feels that this is a very worthwhile initiative and would like to commend the LHFA for moving this forward. It would be a valuable asset to not only the Town of Happy Valley-Goose Bay, but also to the surrounding communities, and indeed a complement to the only other existing Rod and Gun Club in Labrador located in Labrador City.

Should you wish to discuss this matter further please do not hesitate to contact me.

Sincerely,

Jason Foster
Training Specialist
Conservation Services

cc Chris Baldwin, Manager, Conservation Services

Wildlife Division
P.O. Box 2007, Corner Brook, NL, Canada A2H 7S1, Telephone (709) 637-2006, Facsimile (709) 637-2032