

**HUNT'S CONCRETE LTD.
ENVIRONMENTAL ASSESSMENT
REGISTRATION DOCUMENT**

Proposed Sand & Gravel Quarry Expansion, Aspen Brook

Prepared by:

Hunt's Concrete Ltd.
21 Duggan St.
Grand Falls-Windsor, NL.
A2A 2J4

July, 2012

TABLE OF CONTENTS

1.0	NAME OF UNDERTAKING-----	1
2.0	PROPONENT-----	1
2.1	Name-----	1
2.2	Address-----	1
2.3	Telephone, Fax, & Cell Numbers-----	1
2.4	Principal Contact-----	1
3.0	THE UNDERTAKING	
3.1	Nature of the Undertaking-----	1
3.2	Purpose/Rationale/Need for the Undertaking-----	1
4.0	DESCRIPTION OF THE UNDERTAKING	
4.1	Geographic Location-----	1
4.2	Physical Features-----	2
4.2.1	Project Site Description-----	2
4.2.2	Existing Biophysical Environment-----	2
4.3	Construction-----	2
4.3.1	Site Access-----	2
4.3.2	Pit Development-----	3
4.3.3	Potential Sources of Pollution during Construction---	3
4.4	Operation-----	3/4
4.4.1	Potential Sources of Pollution during Operation---	4
4.5	Occupations-----	4
5.0	APPROVAL OF THE UNDERTAKING-----	4
6.0	SCHEDULE-----	4
7.0	FUNDING-----	5
8.0	SUBMISSION-----	5

LIST OF FIGURES

Figure 1:	Site Location-----	6
Figure 2:	Pit Location-----	7
Figure 3:	Pit Location-----	8

1.0 NAME OF THE UNDERTAKING:

Sand and Gravel Quarry Expansion, Aspen Brook

2.0 PROPONENT:

2.1 NAME:	Hunt's Concrete Ltd.
2.2 ADDRESS:	P.O. Box 206 Grand Falls-Windsor, NI. A2A 2J4
2.3 TELEPHONE:	709-489-6658
FAX:	709-489-9844
CELL:	709-486-5516
2.4 PRINCIPAL CONTACT:	Bruce Hunt Owner/Manager

3.0 THE UNDERTAKING:

3.1 Nature of the Undertaking

The proposed project involves the development of a sand and gravel pit West & East of existing Quarry Lease # 107349 Hunt's Concrete Ltd.

Access to the pit will be via an existing road to existing Quarry Lease. The proponent proposes to develop the area as an extension to existing pit operation of mining, crushing and transporting materials for use in Hunt's Concrete Ltd. concrete operation in Grand Falls-Windsor, NL.

3.2 Purpose/Rationale/Need for the Undertaking

The purpose of this project is to produce a product (sand and gravel) for use as concrete aggregate material for use in the Central Nfld. Area of the Province.

4.0 DESCRIPTION OF THE UNDERTAKING:

4.1 Geographic Location

The project is located approximately 7 km southeast of the town of Badger on NTS Map Sheet 02D13. Refer to Figure 1: Site Location and Figure 2: Pit Location for details.

4.2 Physical Features

4.2.1 Project Site Description

The primary physical feature is the site itself. Access to the pit will be by the means of an existing gravel road. Secondary processing will be limited to crushing and screening.

4.2.2 Existing Biophysical Environment

Vegetation

Surrounding the pit is a forest of sparse black and white spruce. Within the West application area the vegetation has been striped and within the East application area it is partially striped & sparsely wooded.

Wildlife

Wildlife species occurring in the area include those adapted to long, cold winters and short, warm summers. Moose, black bear, beaver, snow shoe hare and fox are among the mammal species that occur there. Typical forest birds inhabit the area, including gray jay, fox sparrow, the common crow and various other birds.

Inland Fish

The rivers and ponds of the area are host to a number of fish species including brook trout, rainbow trout, salmon, etc.

4.3 Construction

The construction phase of site development will consist of the following:

West application area – no construction will take place as the area has been striped.

East application area – the area has been partially striped and the remaining forested portion will be cut and grubbed as the forestry permit would dictate.

Hunt's Concrete Ltd. fully understands the sensitive environmental location of this application, namely the Exploits River. Hunt's Concrete Ltd. has operated a quarry in this area since 1989 and has abided by all the conditions of our quarry lease since that time. We have strived to co-operate with other parties operating tourism businesses on the Exploits River and will continue to do so in the future. We are committed to operating our quarry to the highest environmental standards so that the pristine nature of this river will not be compromised.

4.3.1 Site Access

Access to the site will be via an existing road.

4.3.2 Pit Development

The proposed site will consist of Western section 2.1 hectares & Eastern section 4.28 hectares. Where existing topsoil is present it will be stockpiled for pit rehabilitation.

4.3.3 Potential Sources of Pollution during Construction

The construction phase of the development will consist of earth-moving activities. The potential sources of pollution include noise, air emissions, waste and litter.

Site run-off, if any, will be directed to vegetated areas which will filter suspended solids. In addition, barriers will be installed as required to prevent siltation of water bodies/streams.

Domestic waste generated during construction will be collected and disposed of at the Norris Arm Regional Dump Site.

Dust control measures, such as water applications, will be provided on an as-required basis.

Petroleum products will not be stored on site during construction; petroleum products will be handled as per *Storage and Handling of Gasoline and Associated Products Regulations, 2003* under the *Environmental Protection Act (O.C. 2003-225)*.

4.4 Operation

Typical excavation methods will be employed to collect the sand and gravel at the proposed site. The operation will include the excavation and loading of the native sand and gravel materials at the working face of the pit, crushing/screening, and transportation of these materials for use off-site at Hunt's Concrete Ltd.'s concrete batch plant in Grand Falls-Windsor, NL.

If required, appropriate ditching will be maintained on-site to ensure silt and general site run-off is controlled, and does not adversely affect the surrounding environment. In addition, perimeter ditching and settling basins, as required, will be located to prevent migration of surface water drainage from non-operating and off-site areas into operating areas. The grounds and facilities will be maintained according to environmental health and safety standards and regulations.

Equipment on site will include the following:

- 1-2 loader operation
- Tandem Dump Trucks/Semi Dumps (material transportation)
- Rubber Tired Front End Loader (material handling)
- Mobile Crusher/Screening

The pit operation will typically run from April-November, in accordance with demand for the product.

4.4.1 Potential Sources of Pollution during Operation

The potential sources of pollution will be dust, noise, possible site run-off, or an accidental spill of fuel.

All equipment will have appropriate emission controls. All vehicles will have exhaust systems regularly inspected and mufflers operating properly. Dust control measures, such as water applications, will be provided on an as-required basis.

Site run-off, where possible, will be directed to vegetated areas within the project area, which will filter any potential suspended solids.

All fuel handling and storage will comply with the *Storage and Handling of Gasoline and Associated Products Regulations, 2003*. Vehicles and equipment will be maintained in good working order to prevent leaks and spills. There will be no on-site bulk storage of fuel or oil. All waste oil generated at the pit will be disposed of by a licensed disposal agent.

During operation, domestic garbage will be collected and disposed of at the Norris Arm Regional Dump Site.

4.5 Occupations

Site construction and operations for the proposed pit will include the following:

- 1 Site Forman/Supervisor
- 1-2 Loader Operators
- 2-3 Truck Drivers
- 2 Heavy Equipment Mechanics (located off site)

5.0 APPROVAL OF THE UNDERTAKING:

Permit to Proceed: Environmental Protection Act-Assessment Regulations

Quarry Permit: Quarry Materials Act and Quarry Minerals Regulations

6.0 SCHEDULE:

This project will start during the fall of 2012.

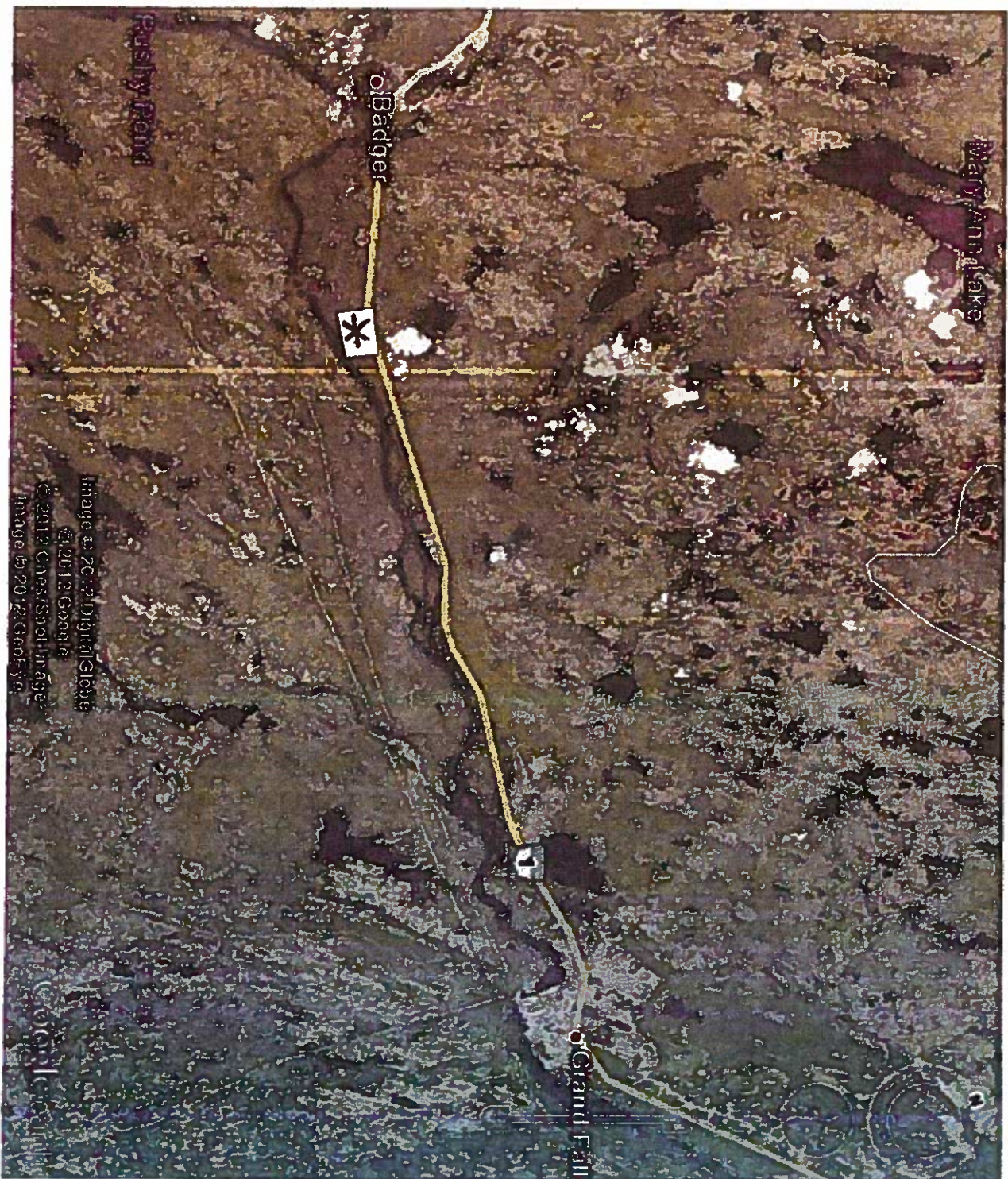
7.0 FUNDING:

The funding for this project will be provided by Hunt's Concrete Ltd.

8.0 SUBMISSION:

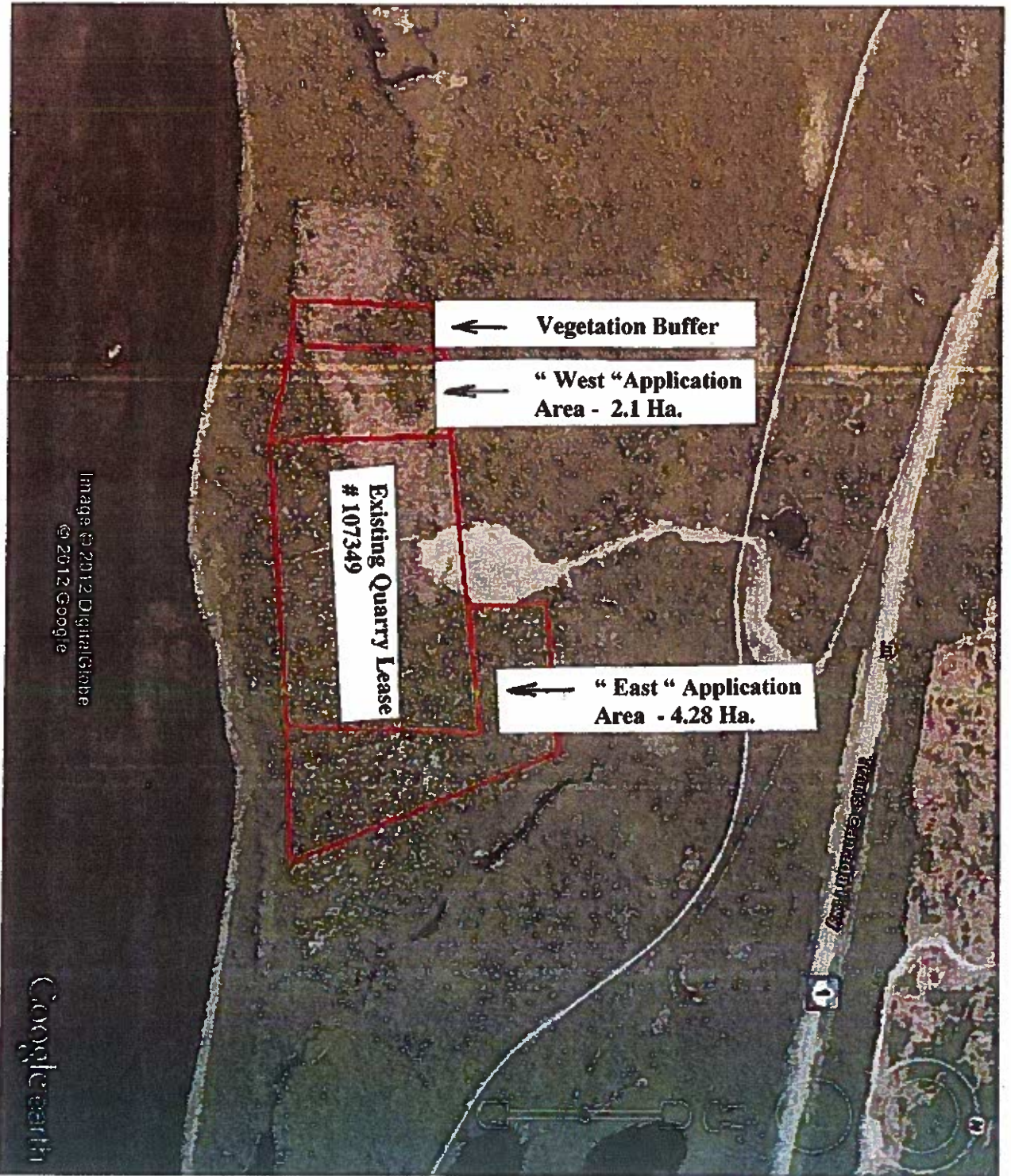
July 18, 2012
Date

B Hunt
Name: Bruce Hunt
Position: Owner/Manager



SITE LOCATION

Figure # 1



WEST & EAST PT LOCATION

Figure # 2

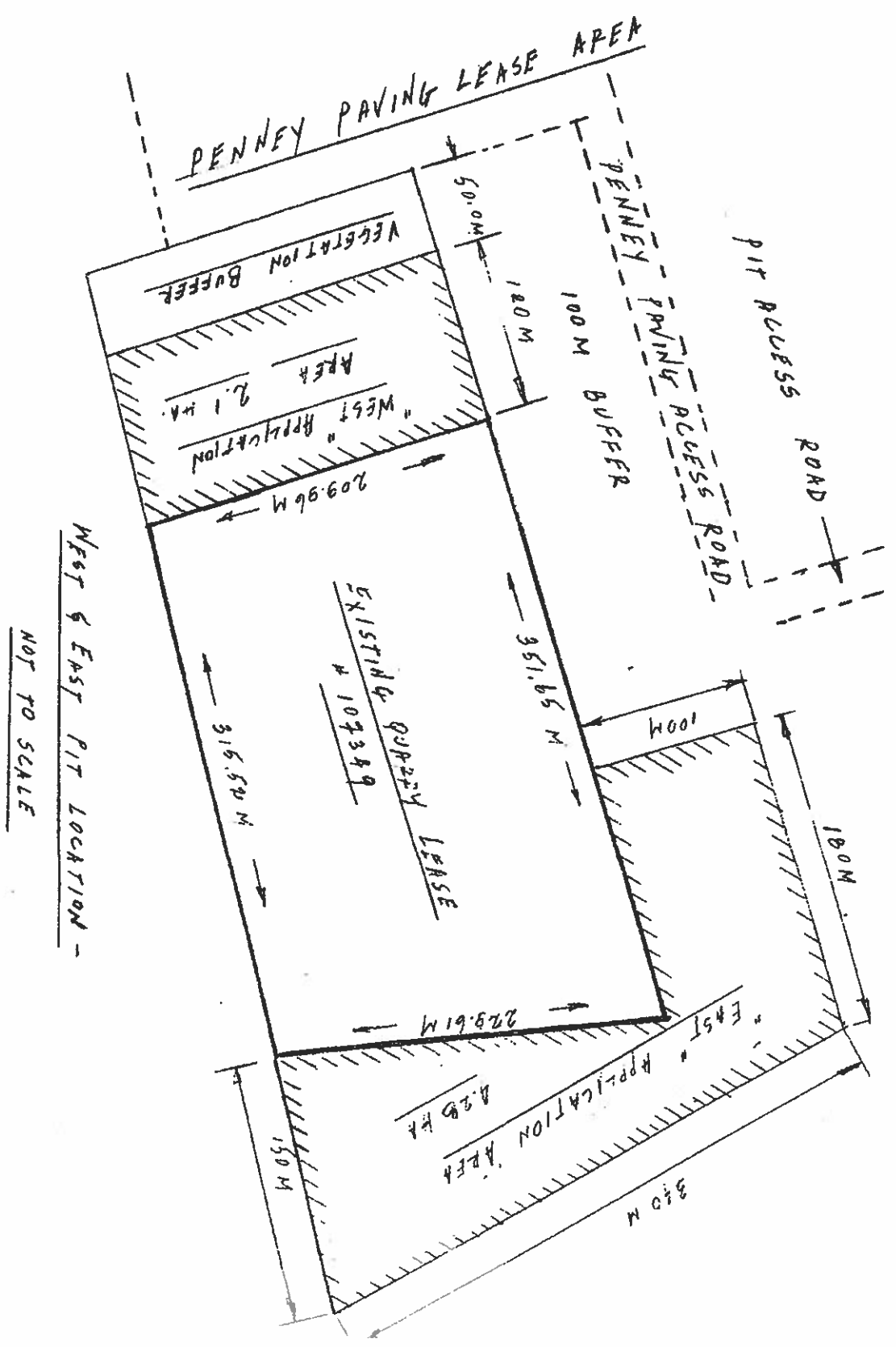


Figure # 3