

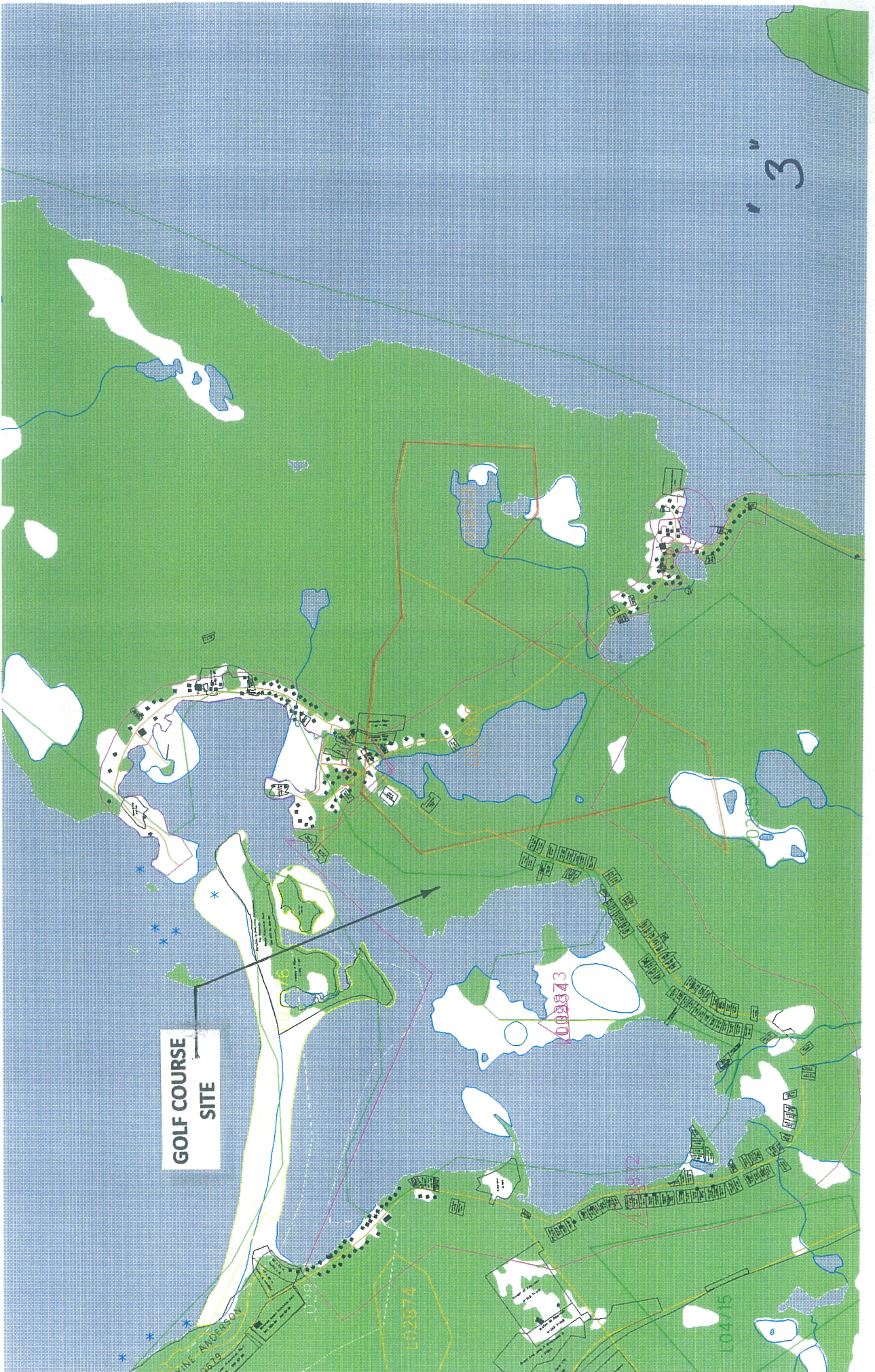
APPENDICES

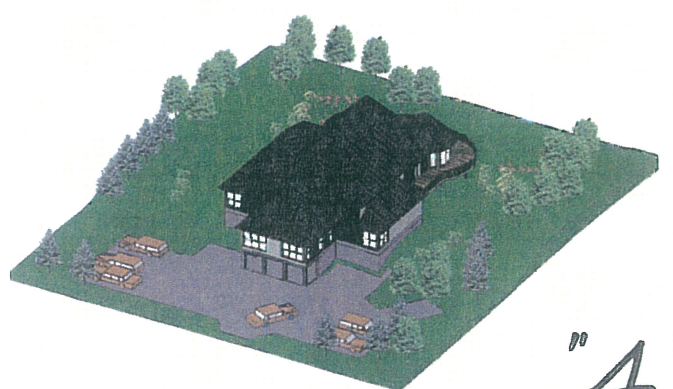
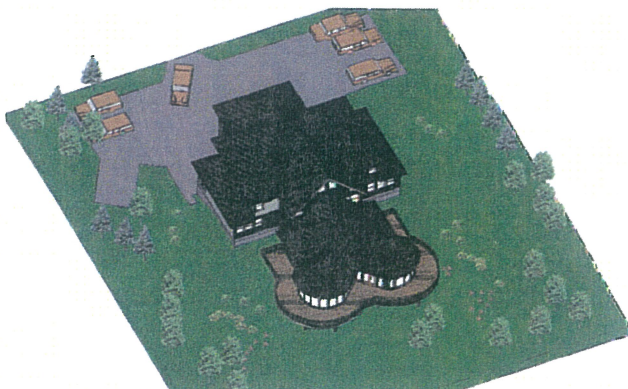
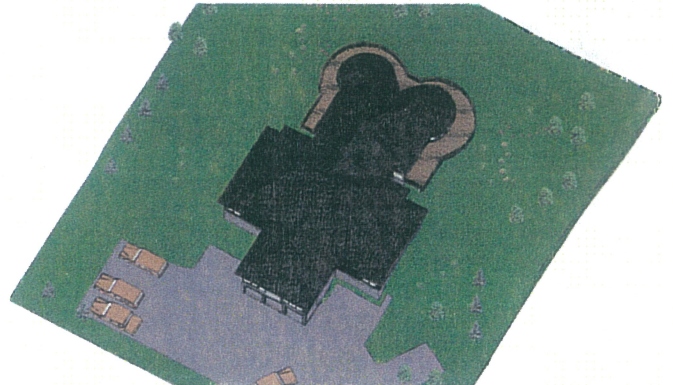
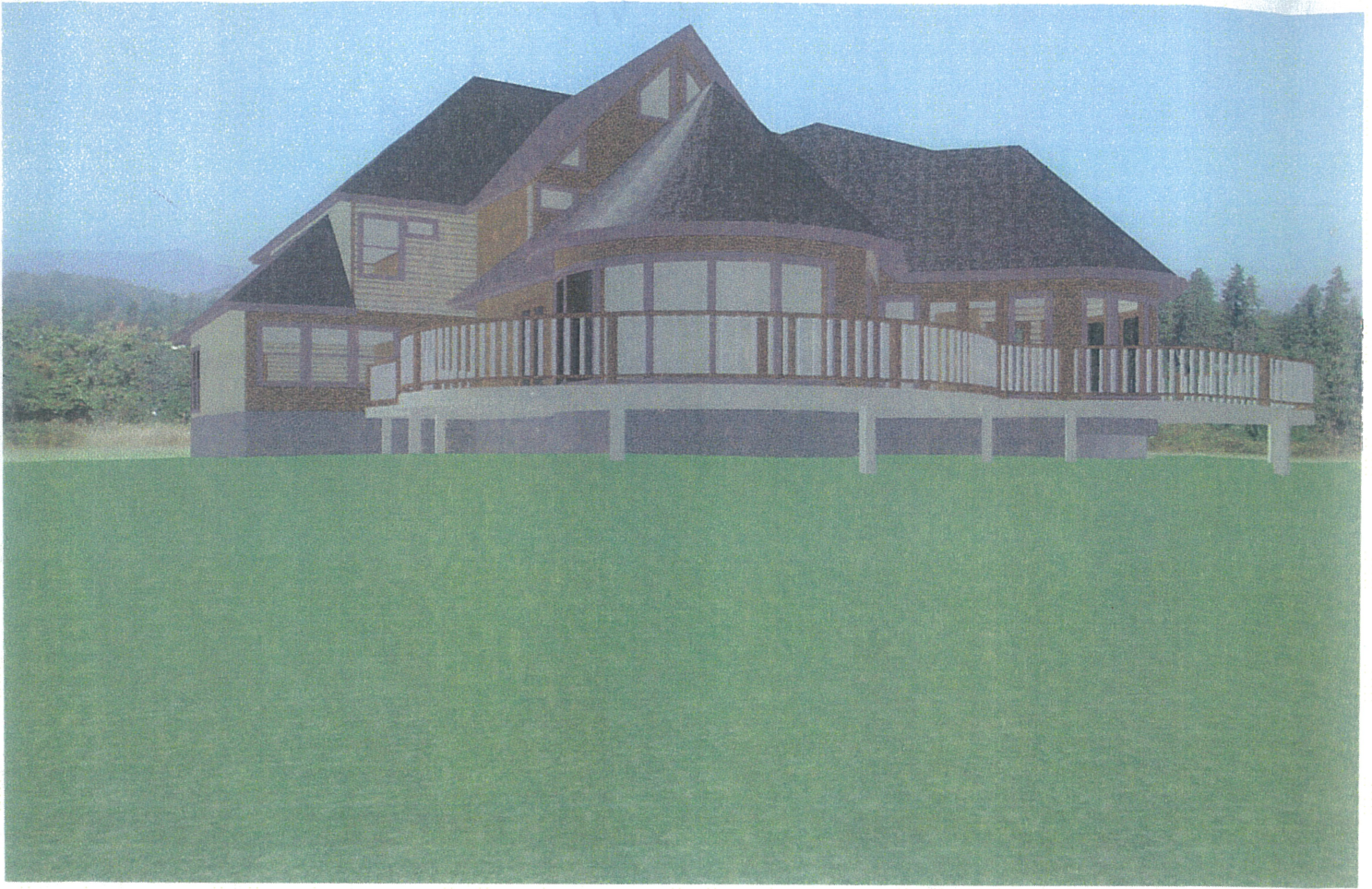
APPENDIX 'A'

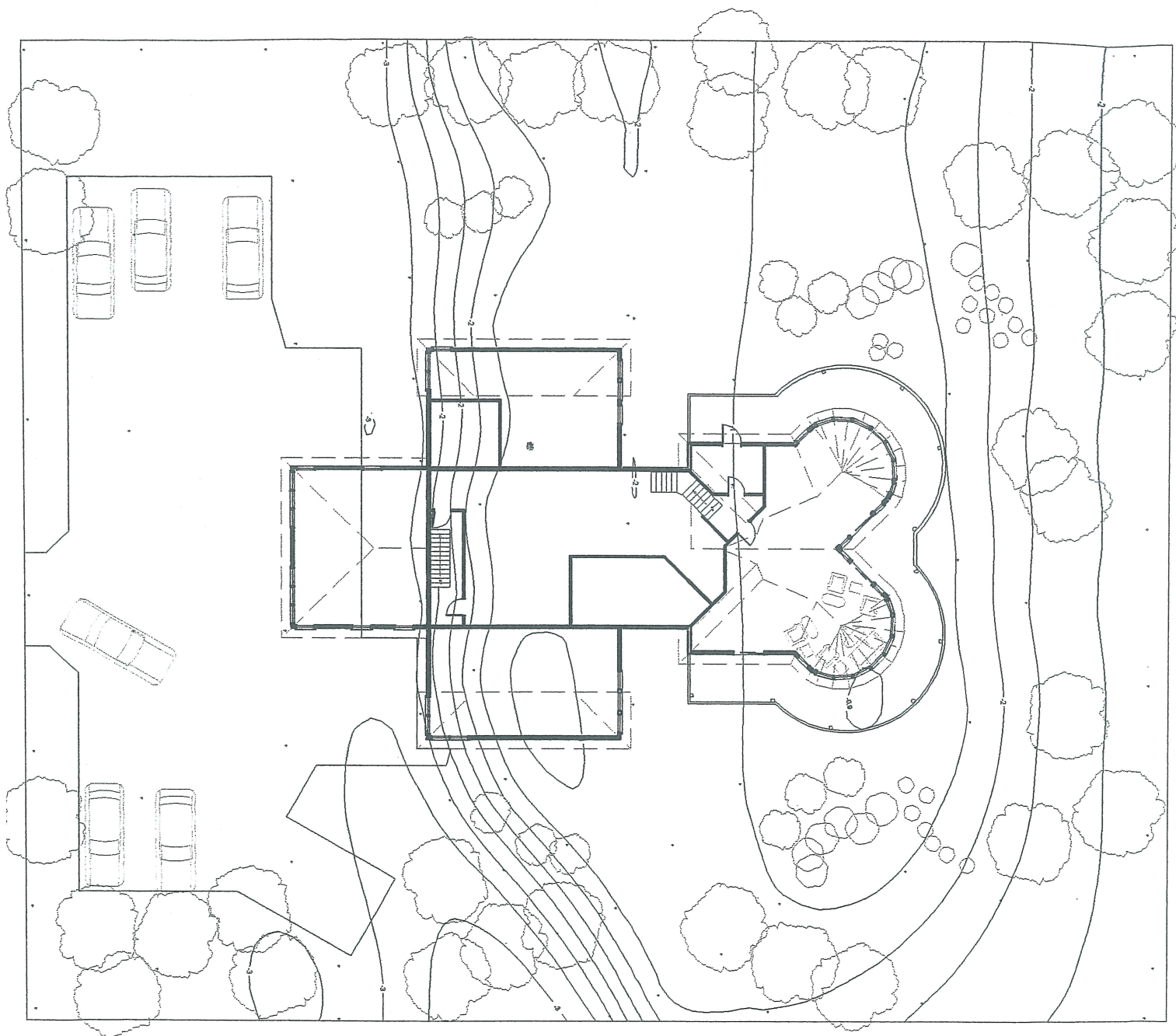
AERIAL PHOTOS, MAPS, DRAWINGS

An aerial photograph showing a large, irregularly shaped area outlined in yellow. This area is labeled "GOLF COURSE SITE". The site is surrounded by dense, dark green forest. To the right of the site, a light-colored road or path runs diagonally. In the upper right corner, there is a small cluster of buildings, possibly a residential or commercial development. The overall terrain appears to be hilly or uneven.

**GOLF COURSE
SITE**







"5"

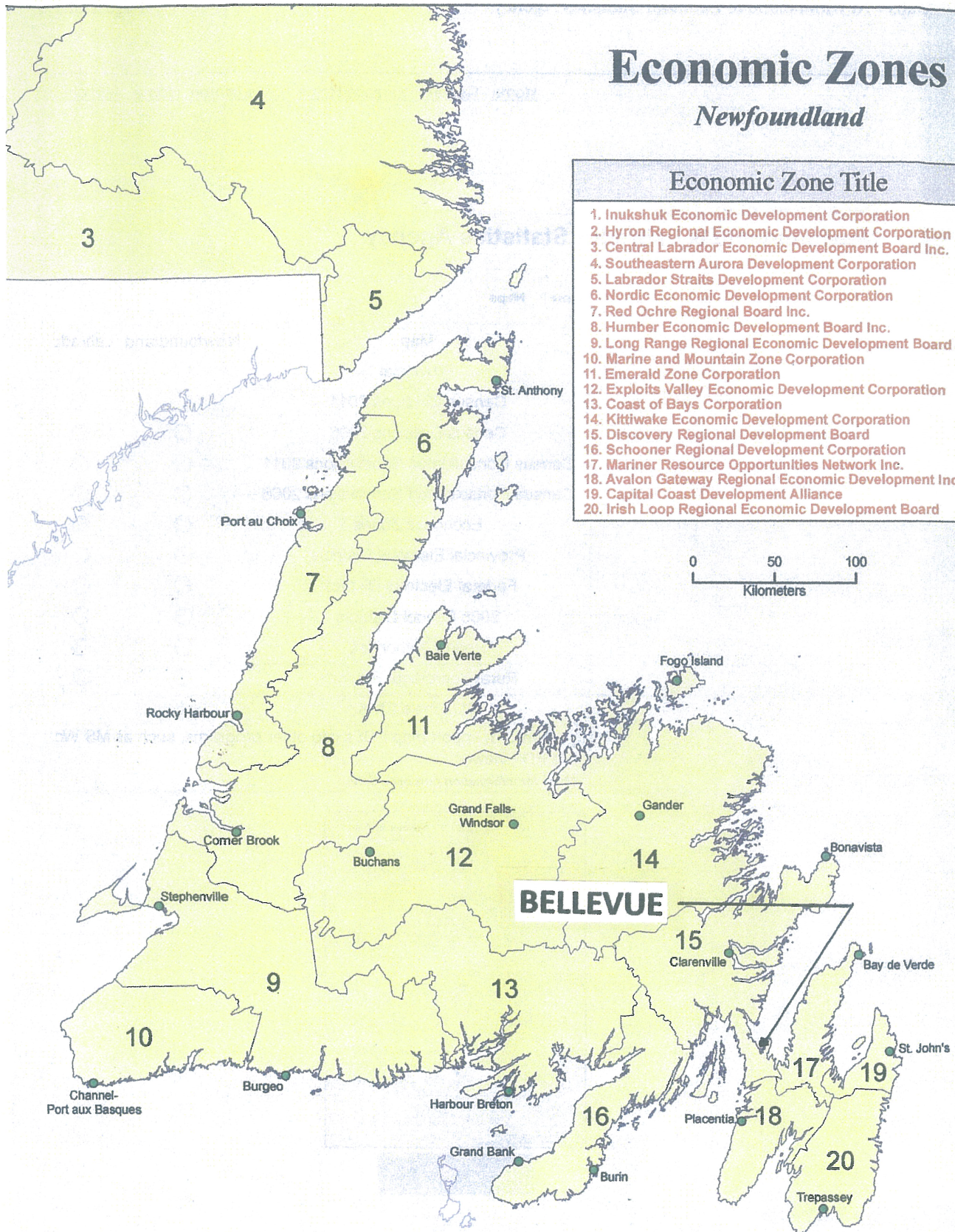
Economic Zones

Newfoundland

Economic Zone Title

1. Inukshuk Economic Development Corporation
2. Hyron Regional Economic Development Corporation
3. Central Labrador Economic Development Board Inc.
4. Southeastern Aurora Development Corporation
5. Labrador Straits Development Corporation
6. Nordic Economic Development Corporation
7. Red Ochre Regional Board Inc.
8. Humber Economic Development Board Inc.
9. Long Range Regional Economic Development Board
10. Marine and Mountain Zone Corporation
11. Emerald Zone Corporation
12. Exploits Valley Economic Development Corporation
13. Coast of Bays Corporation
14. Kittiwake Economic Development Corporation
15. Discovery Regional Development Board
16. Schooner Regional Development Corporation
17. Mariner Resource Opportunities Network Inc.
18. Avalon Gateway Regional Economic Development Inc.
19. Capital Coast Development Alliance
20. Irish Loop Regional Economic Development Board

0 50 100
Kilometers



APPENDIX 'B'

LETTERS

L'MAREIDO ENTERPRISES LTD.

1 Bridget Heights

Chapel Arm, NL

A0B 1L0

Telephone: 709-592-2402; Fax 709-592-2424

April 19, 2012

Dear Citizen:

L'Mareido Enterprises Ltd. solicited your support in August of 2001 for the purpose of the developing a public golf course in the Broad Lake area of Bellevue, Trinity Bay. This support was readily given and I thank you very much.

The proposal is the subject of a Crown Lands application which was approved after a release was obtained under the Environment Assessment Regulations. My surveyor was then given authorization to conduct a survey. The survey could not be completed because private (adverse) land claims were encountered. The Crown Lands Division then deferred further processing of the title until this issue was addressed.

I have recently been notified that the Crown Lands Division is prepared to accept a new plan for the development of the site subject to removal of the adverse claims and a public well head buffer zone.

Also, in accordance with Section 17 of the Environmental Assessment Regulations, previous approval had expired as development was not started within one year from the date of approval. Therefore I am now required to submit a new application and receive approval before a Crown title can be issued and the development proceed.

I am once again looking for a letter of your continued support to be included with this application.

Yours truly,

Melvin Reid, President
L'Mareido Enterprises Ltd.



TOWN OF CHAPEL ARM
P.O. BOX 190
68 MAIN STREET
CHAPEL ARM, NL. A0B 1L0
Phone (709) 592-2720 Fax (709) 592-2800

June 11th, 2012

Mr. Melvin Reid
#10 Wood Path Rd.
Chapel Arm
AOB 1L0

Dear Mr. Reid,

Your letter of April 19th, 2012 was tabled at meeting held on June 6th, 2012 informing Council of your proposal to develop a golf course in the Bellevue area.

Council would like to express its support for this development which would be located in the Broad Lake area of Bellevue, Trinity Bay.

Wishing you the best in this business venture,

Sincerely,

A handwritten signature in cursive script that reads "Phyllis Pretty". The signature is written in dark ink and is positioned above the printed name.

Phyllis Pretty
Clerk (on behalf of council)

HARRIS L. SMITH LIMITED
Distributor- Molson Coors Canada
P.O. BOX 120, 13 Main Road,
Chapel Arm, NL A0B 2T0
TEL:(709)592-2595/ FAX:(709)592-2599
24 hr. Toll Free Order Line: 1-888-592-2595

June 13, 2012

Dear Mr. Reid:

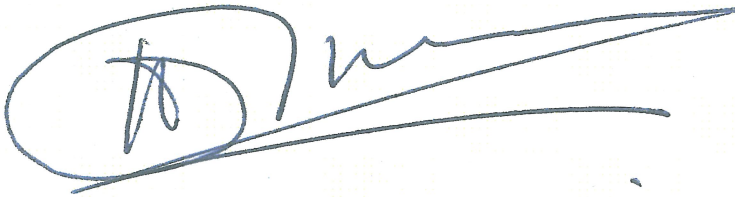
It is understood from your April 19, 2012 letter that L'Mareido Enterprises Ltd. is presently planning a golf course in the Broad Lake area of Bellevue, Trinity Bay. As described in your documentation, the plan entails constructing a practice tee with five greens, an irrigation system, sewage treatment system, clubhouse with dining facilities, pro shop, equipment storage area and related transportation/parking infrastructure. Construction of the site will employ fifteen people and during operation, sixteen people will be employed.

Based on the project description, I, a business owner in the area, support this development and believe that it will have many positive impacts for businesses and residents in the surrounding areas. The area of Bellevue has many summer cottages, a campground, and is only approximately an hour drive from St. John's, the province's most populated area and approximately half an hour from the Long Harbour Inco Development site. I feel that there is a great demand for golf courses on the Avalon Peninsula so with the cottages and campground present in Bellevue, and its close proximity to St. John's and Long Harbour, it is an ideal location. Golfers who come to the proposed course may stay overnight in the area and spend money at local stores, clubs, cabins, parks, and motels. This along with the provision of employment for fifteen people during construction and sixteen during operating seasons will help boost the economy in this area.

The course may also increase the value of houses, cottages and properties in Bellevue and may make it more attractive to families looking for a summer cottage area as well as retiring people who are looking for a community to retire in.

In conclusion I believe that this proposed project will have many positive impacts for the local area and I support this development.

Yours truly,

A handwritten signature in blue ink, consisting of a large, stylized 'H' followed by a series of loops and a long, sweeping horizontal line extending to the right.

Harris L. Smith, President

The Town of Long Harbour & Mount Arlington Heights

P. O. BOX 40

LONG HARBOUR, NEWFOUNDLAND

A0B 2J0

Telephone 709 228-2920

Fax 709 228-2900

June 22, 2012

**Mr. Melvin Reid
L'Mariedo Enterprises Ltd.
1 Bridget Heights
Chapel Arm, NF
A0B 1L0**

Dear Melvin:

The Town Council of Long Harbour & Mount Arlington Heights support your proposal to build a Golf Course in the Broad Lake area of Bellevue, Trinity Bay.

A golf course would enhance the area's tourism potential and will improve the local economy in the surrounding communities. It will also create jobs for residents of the local area.

We wish you luck with this endeavor.

Yours truly,


**Gary Keating
Mayor**



Town of Norman's Cove-Long Cove
P.O. Box 70, Norman's Cove, NL A0B 2T0
Phone: (709) 592-2490 Fax: (709) 592-2106
Email: townofnclc@eastlink.ca

June 26, 2012

Mr. Melvin Reid
L-Mareido Enterprises Ltd.
1 Bridget Heights
Chapel Arm, NL
A0B 1L0

Re: Proposed Public Golf Course

Dear Melvin:

The Town of Norman's Cove-Long Cove is writing in support of your proposal for a public golf course in the Broad Lake area of Bellevue.

The Town believes that if the golf course is developed, the economic benefits would spinoff to all the surrounding area, greatly increasing the viability of all businesses.

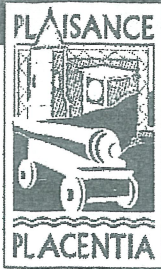
The Town wishes you every success with your proposal and looks forward to the golf course becoming a reality.

Sincerely,

Quanne Hudson

TOWN OF PLACENTIA

P.O. Box 99, 17-27 Patterson Drive, Placentia
Tel: 709-227-2151 Fax: 709-227-23
www.placentia.ca



June 28, 2012

L-Mareido Enterprises Ltd.
Chapel Arm, Trinity Bay
NL A0B 1L0

Attn: Mr. Melvin Reid

Dear Sir:

Please consider this letter as the Town of Placentia's support for your proposed golf course in the Bellevue area.

Council wishes you much success with your initiative.

Yours truly,

A handwritten signature in black ink, appearing to read 'Ed O'Keefe', is written over a horizontal line.

Ed O'Keefe
Chief Administrative Officer

Smith Snack Services LTD.

P.O. Box 22

Norman's Cove, NF

AOB 2T0

Telephone : (709) 592-2520; Fax : (709) 592-2526

September 17, 2001

July 3 - 2012

To Whom It May Concern:

In reference to plans that are presently in the works for a golf course in the Broad Lake area of Bellevue, Trinity Bay, Smith Snack Services LTD. lends total support to L'Mareido LTD. in this endeavor. With the growing attractions offered by this province to its residents and to tourists, putting an 18-hole golf course in this area is a well-rounded and appropriate use of this property.

Tourism in this province continues to grow every year, and those tourist dollars are important to every area. This particular area is currently a very underutilized one, and the attraction that a golf course can provide for both tourists and local residents will have economic and social benefits to the area. With the construction of a golf course, comes the construction of facilities that may be utilized in off-seasons by residents of the surrounding communities, providing year – round operations and opportunity.

As a businessperson, I have had only positive relations with Melvin Reid and L'Mareido LTD. In business for over thirty years island-wide, Smith Snacks recognizes the need for such a project. I pride myself as a good judge of opportunity and those who seize it, and as a company, we fully support Mr. Reid based on past experiences and current associations. L'Mareido has been active in community services in the past and has the same goals in the future. In my opinion, L'Mareido the company, as well as Mr. Reid has proven to be smart, trustworthy, and progressive in business.

In conclusion, Smith Snack Services Ltd. is happy to endorse Mr. Reid and his company to engage this very worthwhile venture. Should there be further questions, please contact me at the above numbers.

Cordially,

Howard Smith
President



CBDC Avalon West*ACOA is pleased to provide support to the CBDCs in Atlantic Canada*

July 4, 2012

Melvin Reid
L'Mariedo Enterprises Ltd.
Chapel Arm, NL
A0B 1L0

Dear Mr. Reid;

CBDC Avalon West is pleased to support, in principal, the proposed development of a golf course and related facilities in the Bellevue area.

This support is based on the assumptions that your market study demonstrates the viability of such a venture and that the project receives a favorable environmental assessment.

We wish L'Mariedo Enterprises Limited every success with this project. If you feel we can be of further assistance, please do not hesitate to contact us.

Yours truly,



Andrew Careen
Chairperson

July 4th, 2012

Hayward W. Smith, Pres.
I. J. Smith & Son Limited
Home Hardware Bldg. Centre
Clover Farm Grocer
60488 NL & Lab Limited
P.O. Box 152 Chance Cove, NL
A0B 1K0

Mr. Melvin Reid
L-Mareido Enterprises Ltd.
Chapel Arm, NL
A0B 1L0

Mr Reid.

I am very pleased to hear about your proposed venture to create a golf course in this area. Your project will benefit existing businesses on the Isthmus....during the initial construction stage and even more so when it becomes operational.

I can't think of a single reason why this project would have a negative impact on the area. I wish you success in your endeavors!

Sincerely



Hayward Smith

HS/ls



P.O. Box 40 • Long Harbour, NL, A0B 2J0 • phone: (709) 228-2233 • fax: (709) 228-3081 • web: www.longharbour.net

July 12, 2012

L-Mareido Enterprises Ltd.
1 Bridget Heights
Chapel Arm, NF, A0B 1L0

Attention Melvin Reid

Re: Golf Course Development at Bellevue T.B.

Dear Mr. Reid:

The Long Harbour Development Corporation Supports your proposal to construct a public Golf Course on property situated at Bellevue, Trinity Bay.

As a community centric economic development Corporation we encourage all business enterprises that will have a positive impact on the economy of our area. The facility that you are proposing will provide a boost to the tourism industry while creating employment in rural Newfoundland. Tourism is one of our provinces most important industries and the golf community is an integral part of that industry.

The Government of Newfoundland and Labrador recognizes the contribution golf courses make to the provincial tourism industry. The Department of Tourism & Recreation are working with other golf minded organizations to promote and increase awareness of the outstanding golf product available in this province to both residents and non residents.

We congratulate you on your initiative to become involved in such a great venture and wish you much luck in achieving your objective.

We look forward to seeing the course at Bellevue operating in the near future.

Sincerely

A handwritten signature in blue ink, appearing to read "Gary Keating", enclosed in a circular stamp.

Gary Keating
Chairman

Cc: J.J Bennett
LHDC

LOCAL SERVICES DISTRICT - BELLEVUE
P.O. BOX 2, BELLEVUE, NL. A0B 1B0
PHONE/FAX 709-442-5151

Mr. Melvin Reid
C/o General Delivery
Chapel Arm, NL.,

July 31st 2012

Dear Mr. Reid

Re; Golf Course;

This is a follow up to our meeting with you and your representatives on June 5th 2012 regarding your plans to develop land on route 201 in Bellevue for the purposes of building a standard size Golf Course.


The Local Services District Committee for Bellevue supports you fully in this endeavour, and are excited by its potential economic spin off for our Community. We wish you much success, and should you need further advice or input from us, please feel free to contact us.

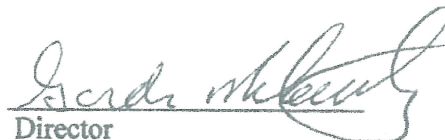
Sincerely,


John Ralph, Chairman


Vice- Chairperson


Secretary


Treasurer


Director

Director