

Eagleridge International Limited
Big Triangle Pond Mineral Exploration Resource Access Road and Associated Mineral
Exploration Activities
Environmental Protection Plan

Appendix A

Revision Log Form

Eagleridge International Limited
Environmental Protection Plan

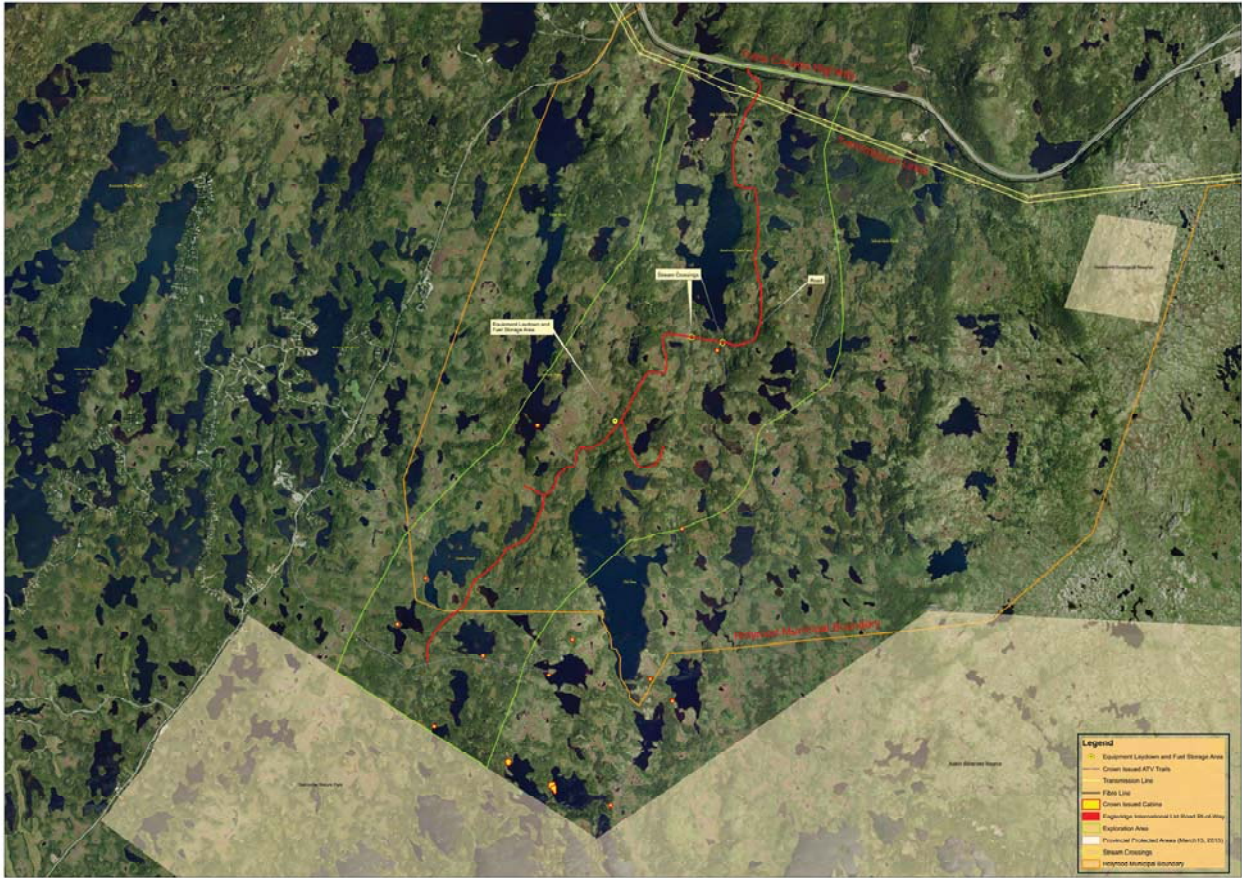
REVISION LOG FORM				
Revision Number	Section of EPP to be Revised	Date of Revision	Revision Description	EPP Holder's Signature

Eagleridge International Limited
Big Triangle Pond Mineral Exploration Resource Access Road and Associated Mineral
Exploration Activities
Environmental Protection Plan

Appendix B

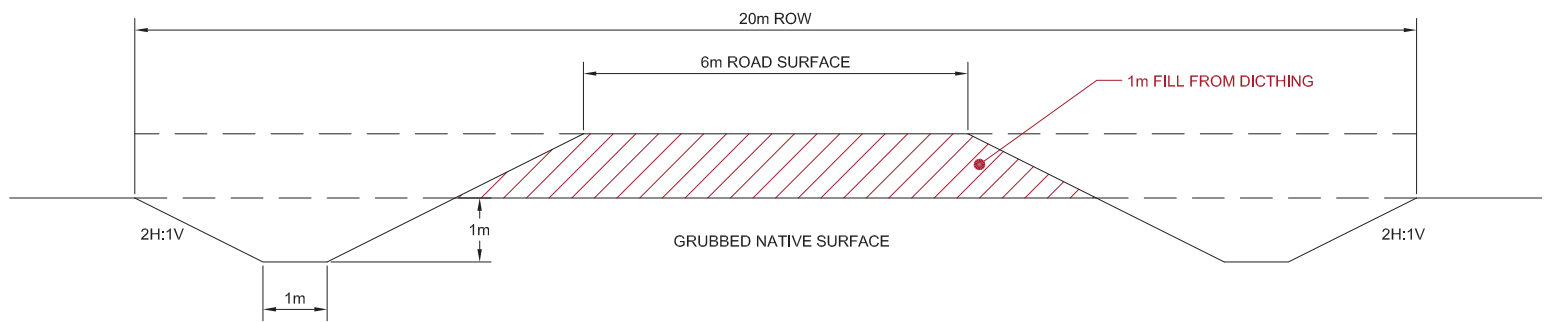
Map Overview of Big Triangle Pond Access Road Features

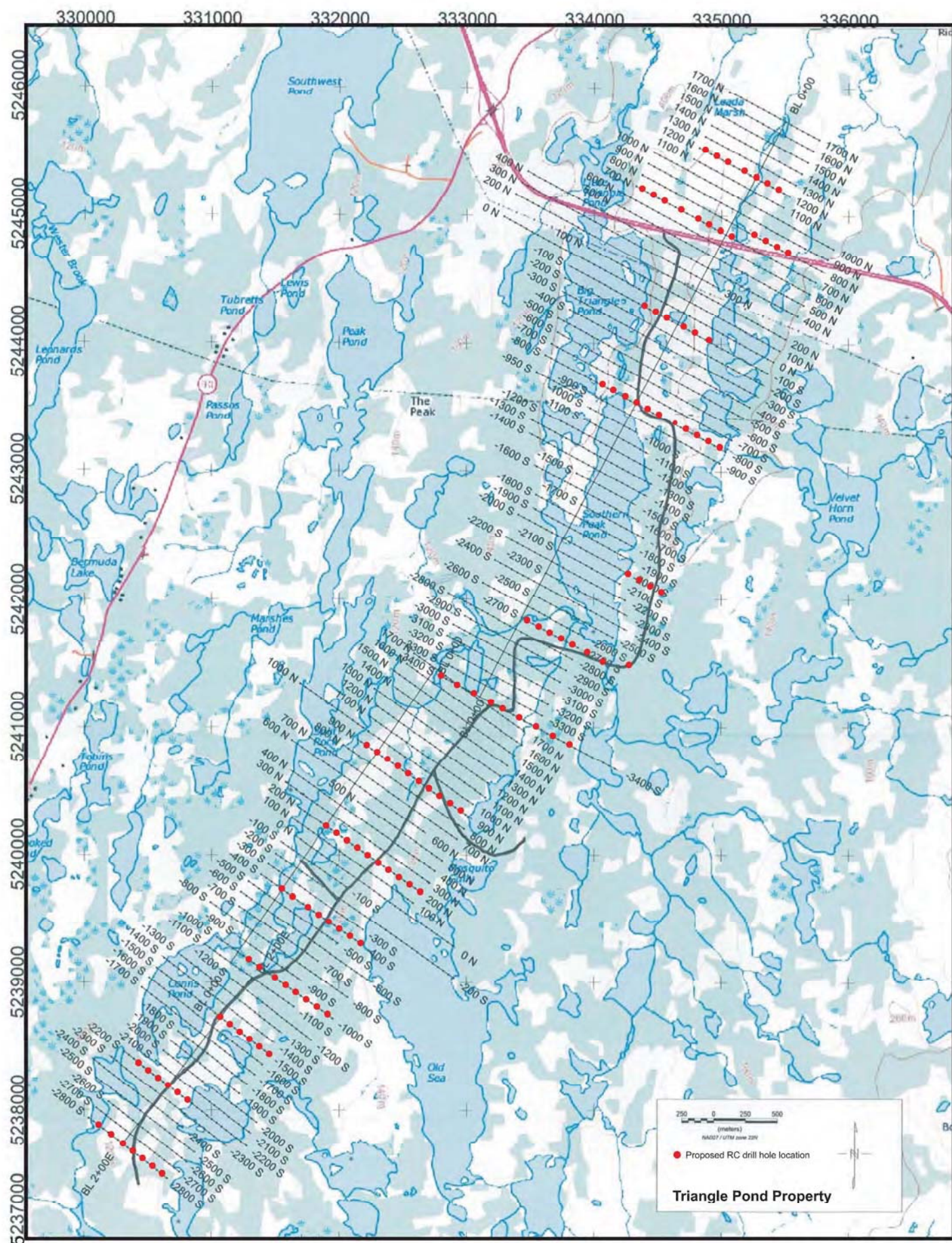
Big Triangle Pond Mineral Exploration - Resource Access Road



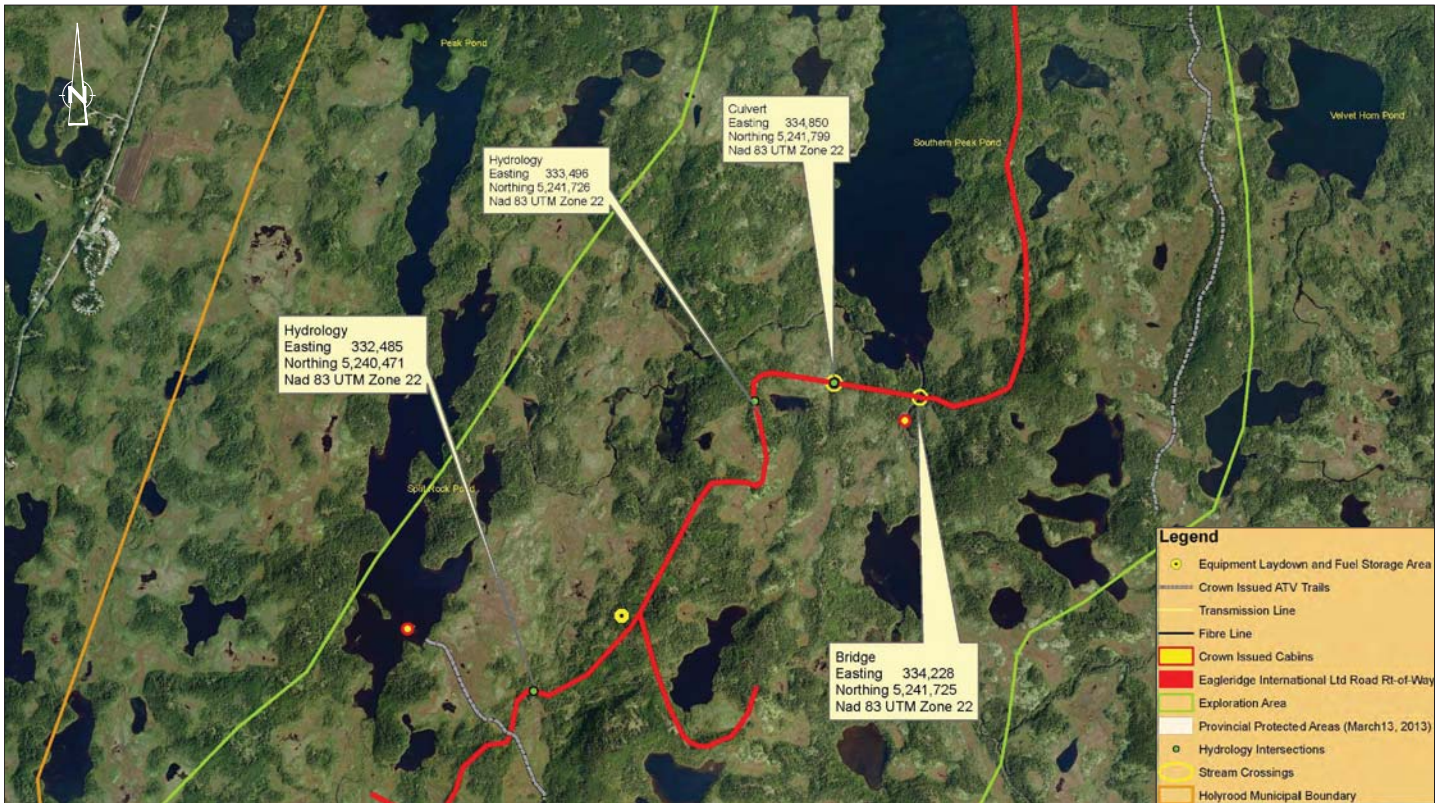
Eaglebridge International Limited
Big Triangle Pond Mineral Exploration - Resource Access Road

TYPICAL RESOURCE ACCESS ROAD CROSS SECTION





Proposed RC drill hole locations

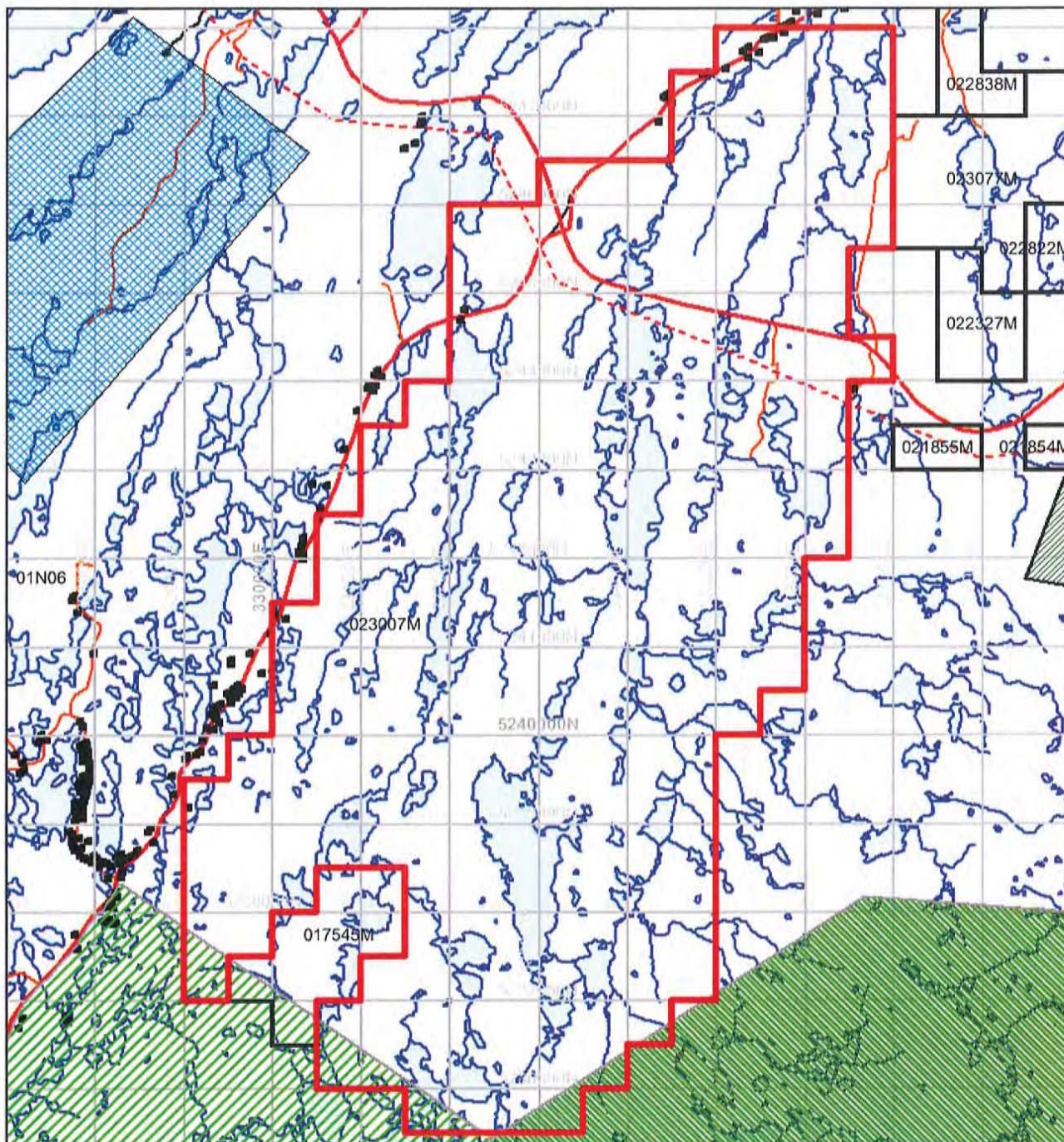


STREAMS IDENTIFIED USING GEOSPATIAL ANALYSIS
EAGLERIDGE INTERNATIONAL LIMITED
BIG TRIANGLE POND MINERAL EXPLORATION - RESOURCE ACCESS ROAD

Eagleridge International Limited
Big Triangle Pond Mineral Exploration Resource Access Road and Associated Mineral
Exploration Activities
Environmental Protection Plan

Appendix C

Mineral Licenses



**Newfoundland and Labrador
Department of Natural Resources
Mineral Lands Division**

P.O. Box 8700, St. John's, NL, A1B 4J6

Signing Authority

Date: Thursday, June 25, 2015

License Information

License: 023007M

Holder: Eagleridge International Limited

Location: Split Rock Pond, Avalon Peninsula

Map Sheets: 01N06

Projection: UTM Zone 22 (NAD27)

Eagleridge International Limited
Big Triangle Pond Mineral Exploration Resource Access Road and Associated Mineral
Exploration Activities
Environmental Protection Plan

Appendix D

List of Applicable Terminology

List of Applicable Terminology

Boreal Felt Lichen	An epiphytic lichen that grows primarily on Balsam Fir trees.
Catch Basin	A reservoir or well into which surface water may drain off.
Biodegradable	Capable of becoming decomposed by bacteria or other living organisms.
Check Dam	A small dam, which can be either temporary permanent, built across a minor channel, swale, bioswale, irrigation canal, or drainage ditch.
Corduroy Road	A road made of tree trunks laid across a swamp.
Culvert	A tunnel carrying a stream or open drain under a road or railroad.
Diamond Drilling	Drilling that has a hollow, cylindrical bit set with diamonds, used for obtaining cores of rock samples.
Drainage Ditch	Open trenches used to improve drainage in relatively flat areas with wet soils.
Effluent	Liquid waste or sewage discharged into a river or the sea.
Geotextile	Permeable fabrics which, when used in association with soil, have the ability to separate, filter, reinforce, protect, or drain.
Hydraulic Mulch	Consists of applying a mixture of shredded wood fiber or a hydraulic matrix and a stabilizing emulsion with hydro seeding equipment, which temporary protects exposed soil from erosion by rain drop impact or wind.
Induced Polarization	A geophysical imaging technique used to identify subsurface materials, such as ore.
Overburden	Rock or soil overlying a mineral deposit, archaeological site, or other underground feature.
Phorophyte	Any plant on which an epiphyte grows.
Prospecting	Search for mineral deposits in a place, especially by means of experimental drilling and excavation.
Reverse Circular Drilling	A technique which allows for full recuperation of the soil and rock samples, without any wall contamination.
Rip Rap	Loose stone used to form a foundation for a breakwater or other structure.
Scarify	To break up, loosen, or roughen the surface of.

Sediment Trap	An impoundment created by a dam or excavation for the purpose of storing water and settling sediment and other pollutants from surface runoff.
Settling Basin	An earthen or concrete structure using sedimentation to remove settleable matter and turbidity from wastewater.
Silt Fence	A perimeter sediment control device that is generally constructed of porous, woven geotextile fabric attached to wooden posts.
Thallus	The undifferentiated vegetative body of algae, fungi, and lichens.