

LEGEND

- Sil-Dev : Mafic Intrusive
- Sil-Dev : Granitoids
- Sil : Rogerson Lake Conglomerate
- Camb-Ord : Siliclastic sediments
- Camb-Ord : Mafic - felsic submarine volcanics
- Camb-Ord : Granitoids
- Precambrian : Valentine Lake Intrusive Suite**
- Trondhjemite
- Quartz porphyry, minor gabbro

**Leprechaun Gold Deposit
Open Pit & Underground Resources**

	2013	Tonnes (kt)	Au grade (g/t)	Gold (oz)
M & I		10,587	2.28	775,000
Inf		1,555	2.79	140,000

**Sprite Gold Deposit
Open Pit Resources**

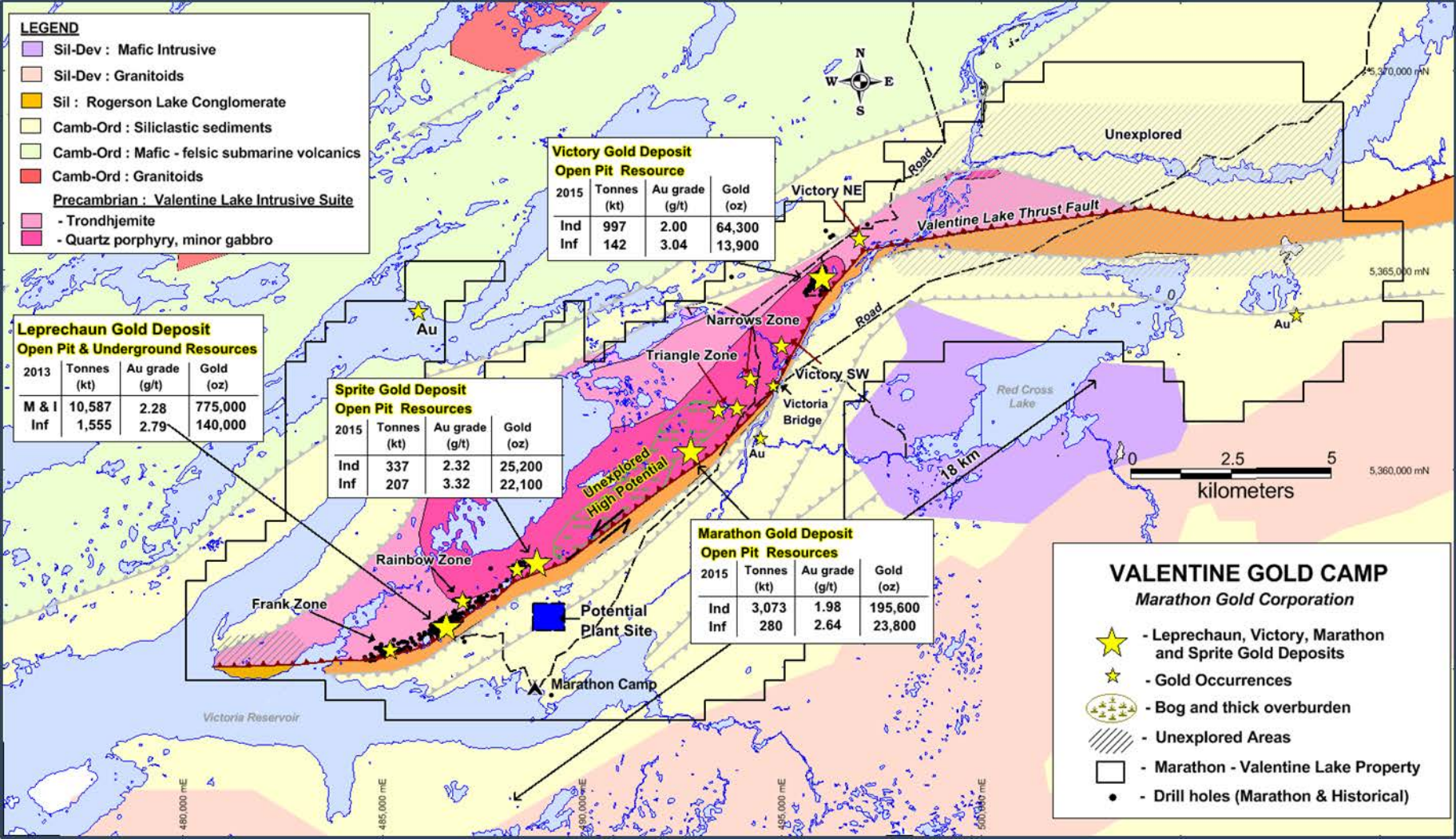
	2015	Tonnes (kt)	Au grade (g/t)	Gold (oz)
Ind		337	2.32	25,200
Inf		207	3.32	22,100

**Victory Gold Deposit
Open Pit Resource**

	2015	Tonnes (kt)	Au grade (g/t)	Gold (oz)
Ind		997	2.00	64,300
Inf		142	3.04	13,900

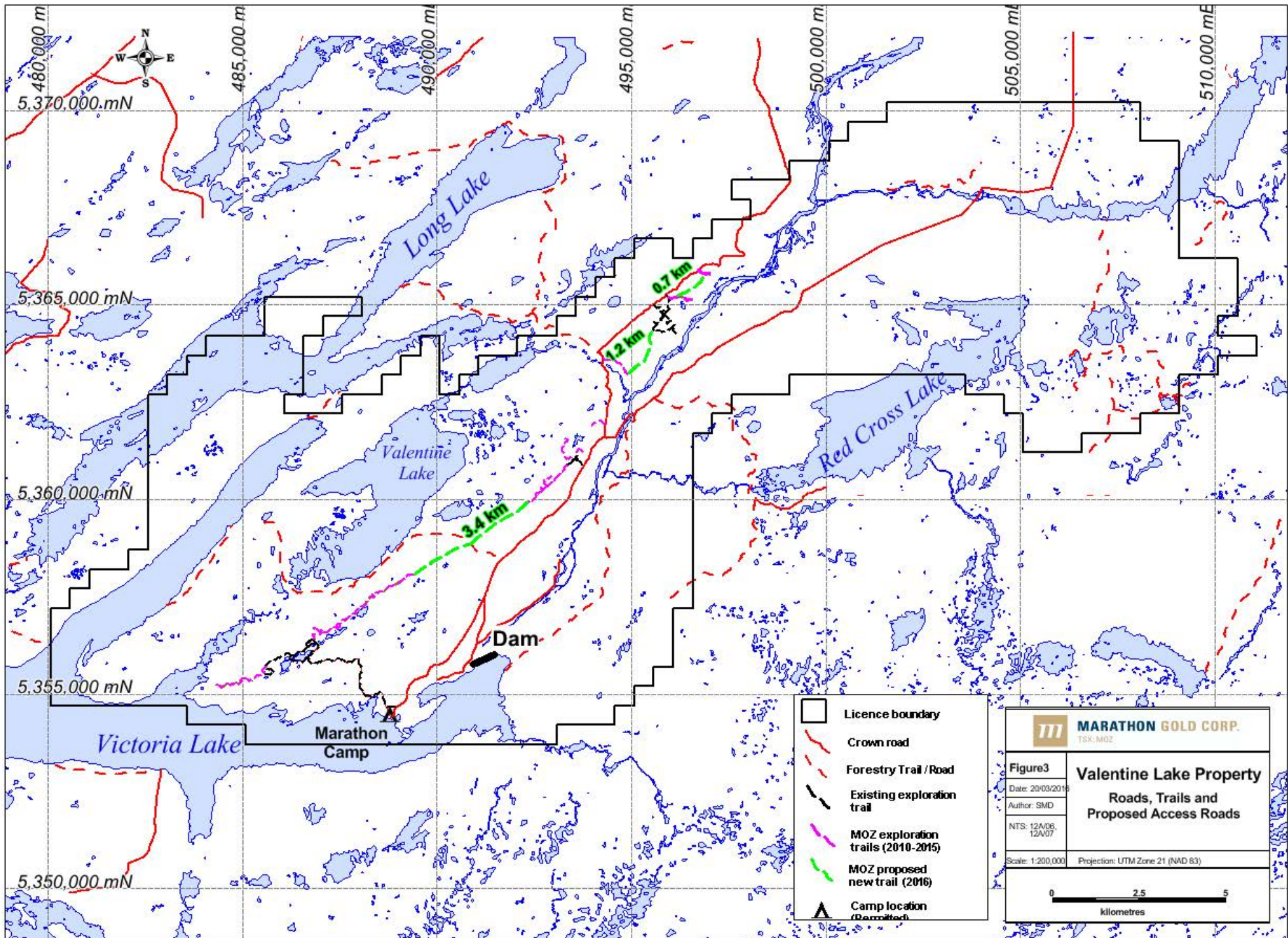
**Marathon Gold Deposit
Open Pit Resources**

	2015	Tonnes (kt)	Au grade (g/t)	Gold (oz)
Ind		3,073	1.98	195,600
Inf		280	2.64	23,800



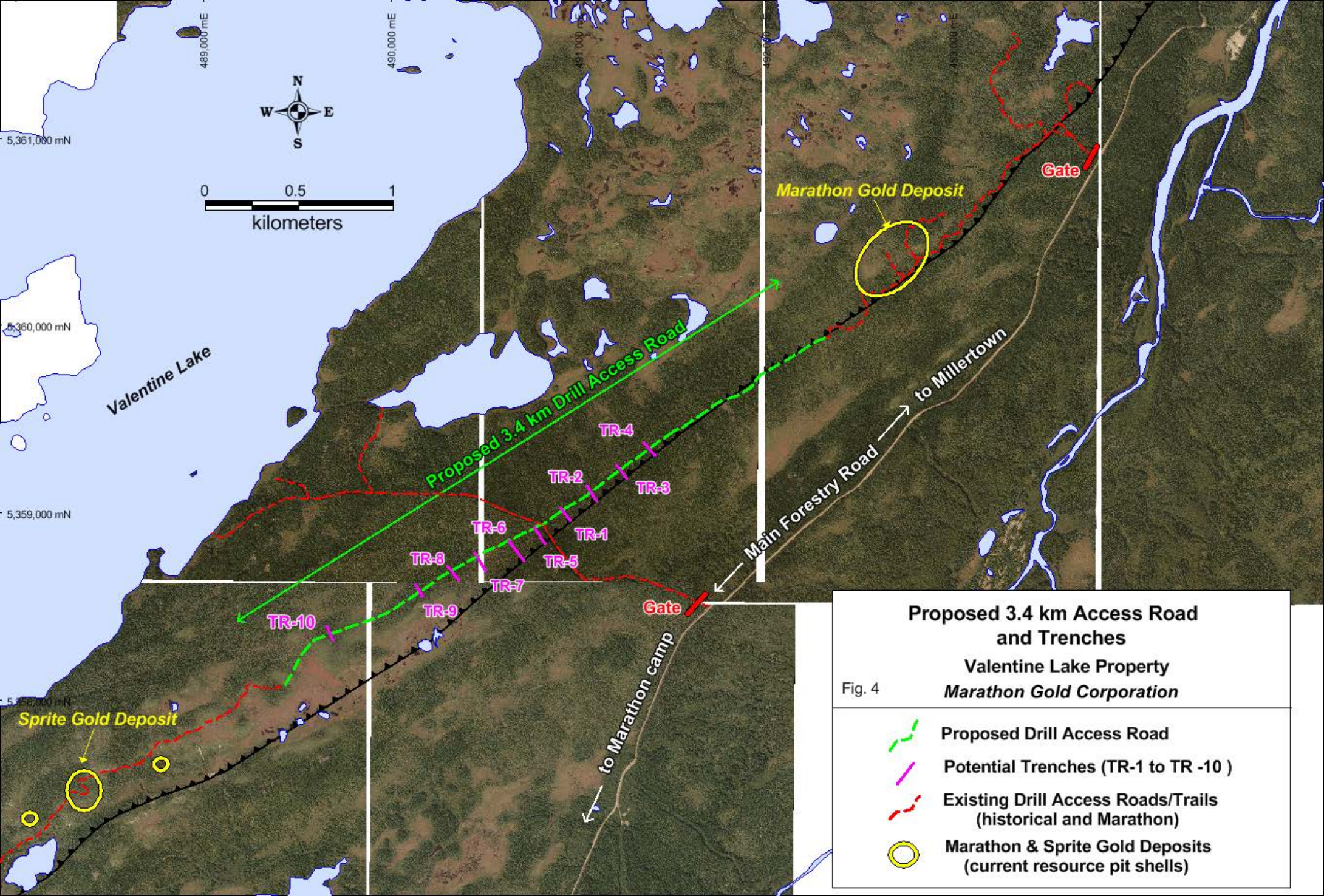
VALENTINE GOLD CAMP
Marathon Gold Corporation

- Leprechaun, Victory, Marathon and Sprite Gold Deposits
- Gold Occurrences
- Bog and thick overburden
- Unexplored Areas
- Marathon - Valentine Lake Property
- Drill holes (Marathon & Historical)



- Licence boundary
- Crown road
- Forestry Trail / Road
- Existing exploration trail
- MOZ exploration trails (2010-2015)
- MOZ proposed new trail (2016)
- Camp location (Demolished)

MARATHON GOLD CORP. TSX:MOZ	
Figure3	Valentine Lake Property
Date: 29/03/2016	Roads, Trails and Proposed Access Roads
Author: SMD	
NTS: 12/06, 12/07	
Scale: 1:200,000	Projection: UTM Zone 21 (NAD 83)

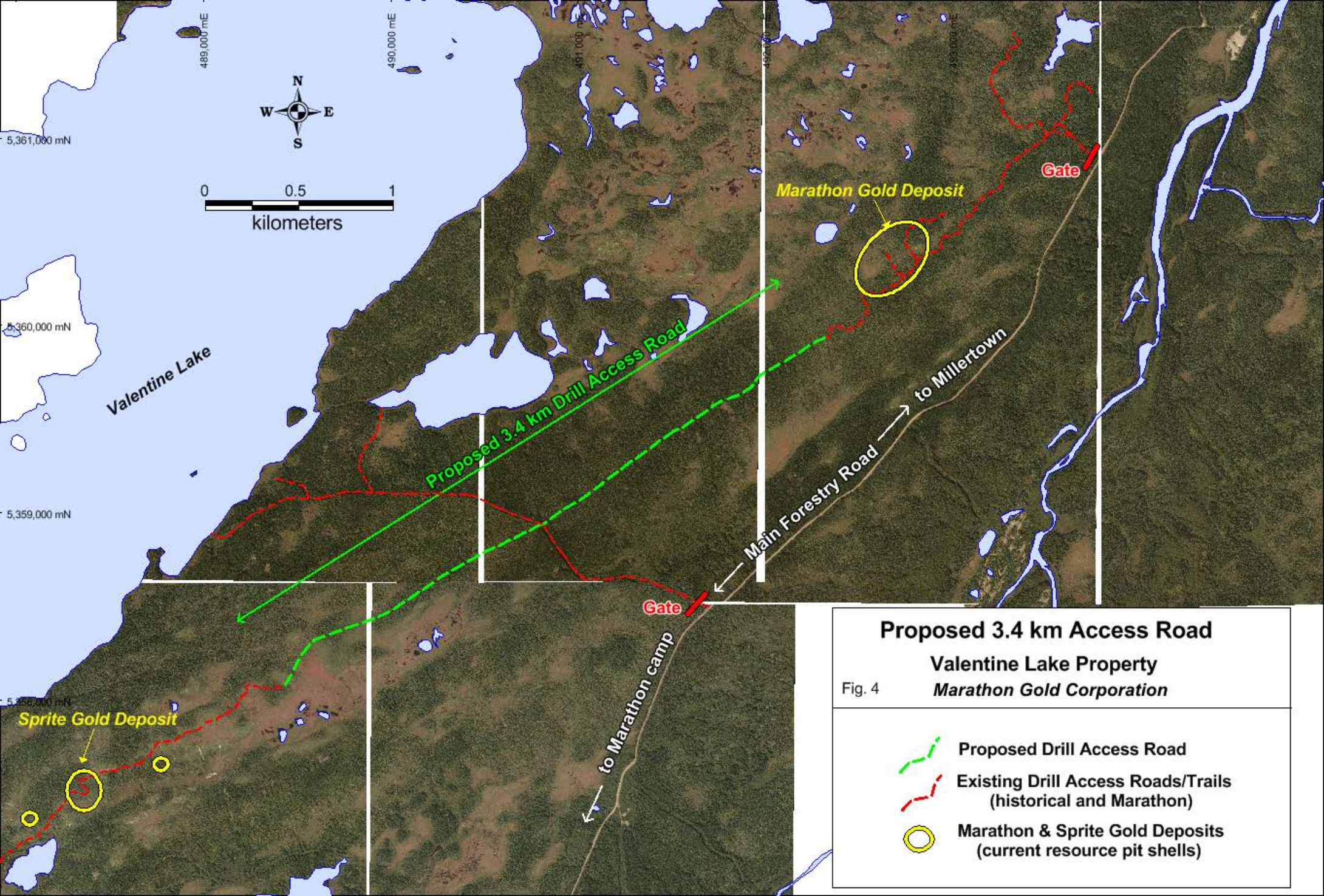


Proposed 3.4 km Access Road and Trenches

Valentine Lake Property
 Marathon Gold Corporation

Fig. 4




-  Proposed Drill Access Road
-  Potential Trenches (TR-1 to TR -10)
-  Existing Drill Access Roads/Trails (historical and Marathon)
-  Marathon & Sprite Gold Deposits (current resource pit shells)

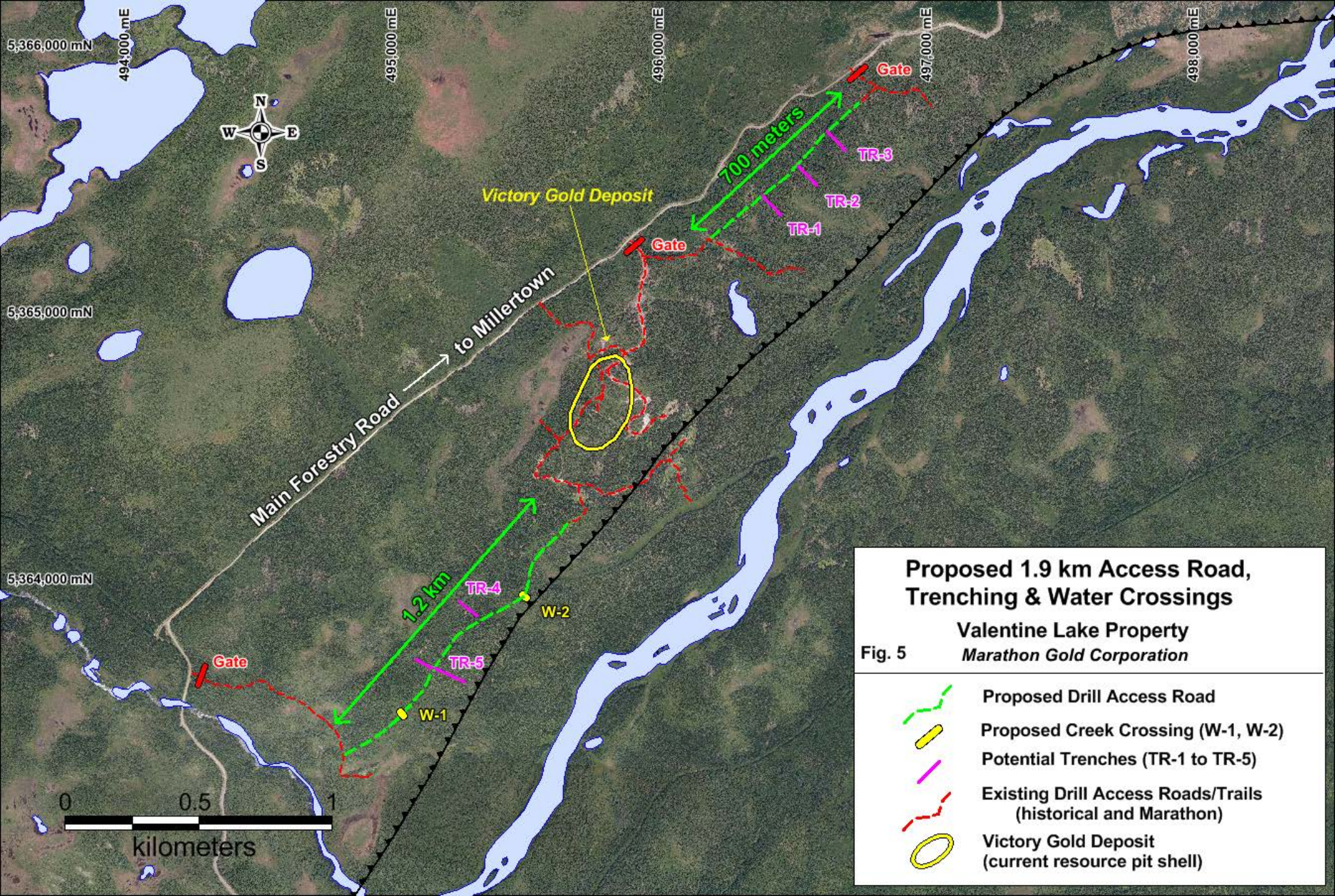


Proposed 3.4 km Access Road

Valentine Lake Property
Marathon Gold Corporation

Fig. 4


-  Proposed Drill Access Road
-  Existing Drill Access Roads/Trails (historical and Marathon)
-  Marathon & Sprite Gold Deposits (current resource pit shells)

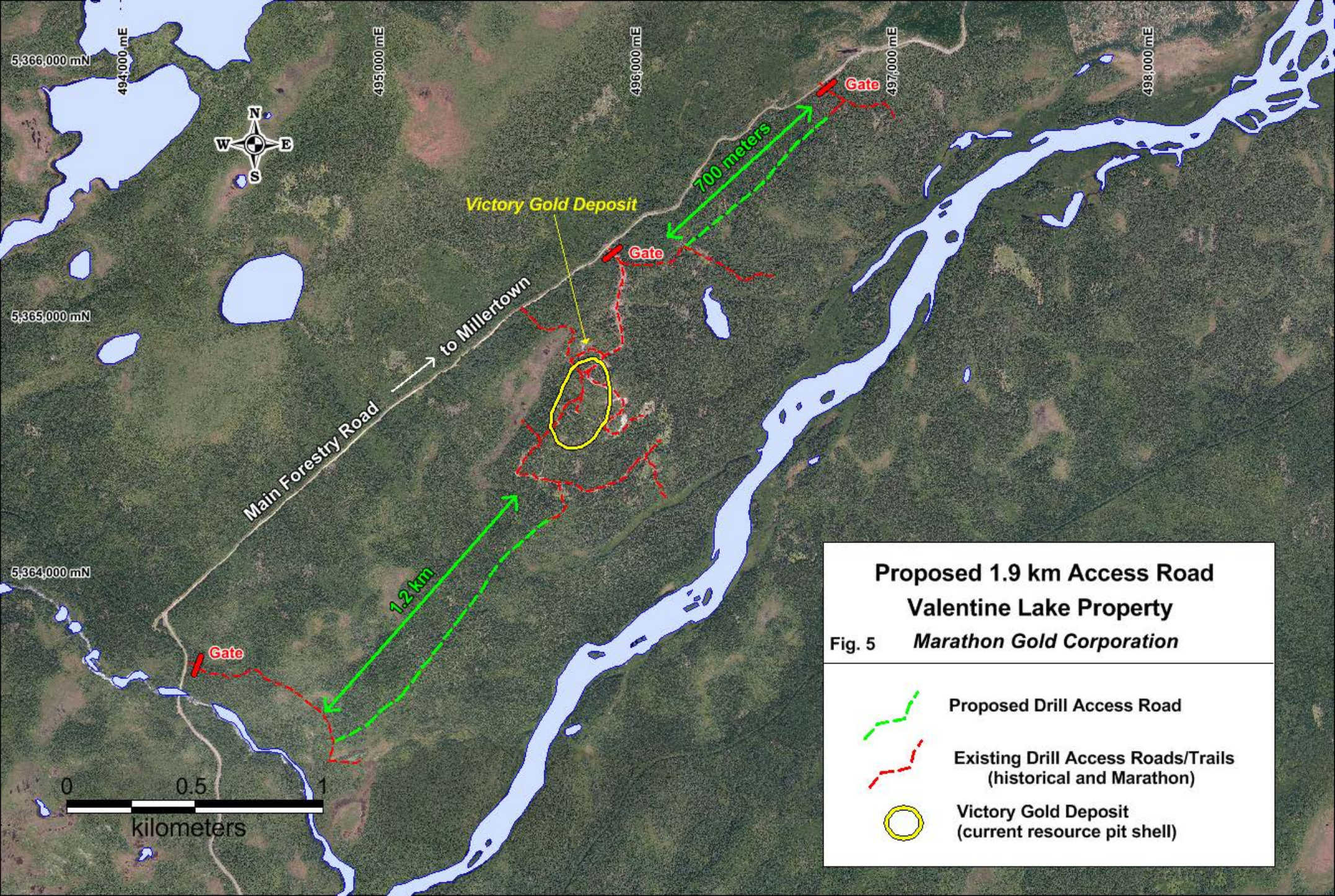


**Proposed 1.9 km Access Road,
Trenching & Water Crossings**

Valentine Lake Property
Marathon Gold Corporation

Fig. 5

-  Proposed Drill Access Road
-  Proposed Creek Crossing (W-1, W-2)
-  Potential Trenches (TR-1 to TR-5)
-  Existing Drill Access Roads/Trails (historical and Marathon)
-  Victory Gold Deposit (current resource pit shell)



**Proposed 1.9 km Access Road
Valentine Lake Property**

Fig. 5 *Marathon Gold Corporation*

-  Proposed Drill Access Road
-  Existing Drill Access Roads/Trails
(historical and Marathon)
-  Victory Gold Deposit
(current resource pit shell)