

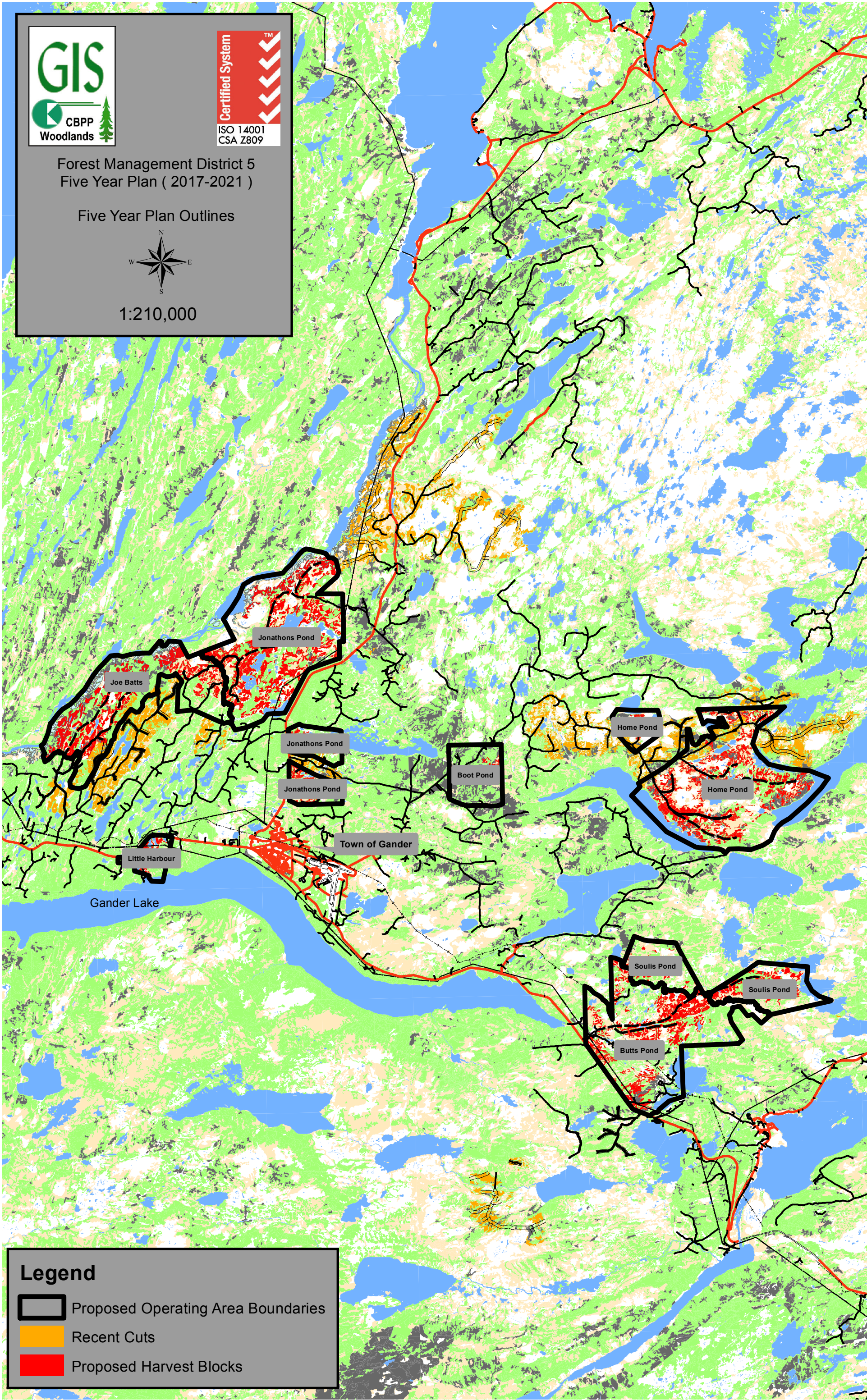


Forest Management District 5
Five Year Plan (2017-2021)

Five Year Plan Outlines

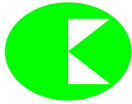


1:210,000



Legend

- Proposed Operating Area Boundaries
- Recent Cuts
- Proposed Harvest Blocks



CORNER BROOK PULP & PAPER LIMITED
FIVE YEAR OPERATING PLAN



FMD:	<u>05</u>	Plan Period:	<u>Jan 1,2017 - Dec 31, 2021</u>
Operating Area:	<u>Soulis Pond</u>	Inventory Map #:	<u>078</u>
Harvest Area #:	<u>K-05-01</u>	NTS Map #:	<u>2D16</u>

Forest Inventory

Gross

Volume: 39,759 m3
Area: 460 ha

Net

Volume: 36,476 m3
Area: 422 ha

Working Group

bF: 19 %
bS: 81 %

Operational Considerations:

Harvest System: Mechanical

Terrain Conditions: Predominately gentle terrain in combination with rolling hill top conditions, interspersed with rivers, ponds, streams and bogs.

Other Considerations:

Reconnaissance surveys will be carried out on harvested areas. Silviculture prescriptions will be determined once assessments have been completed.

This area falls within the municipal area for the town of Gander. CBPP will consult with the town of Gander prior to any harvesting or road development and necessary permits will be attained.



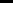


Corner Brook Pulp and Paper Woodlands developed a Sustainable Forest Management Plan as part of our registration to the ISO 14001 and CSA Z809 standards. For further information on the SFM plan visit our website @ <http://www.cbtpl.com/>.



Soulis Pond
(K - 05 - 01)
Scale:1:50,000

LEGEND






Five Year Plan Features

-  Five Year Plan Boundary
 Proposed Silviculture Area
 Proposed Primary Road
 Proposed Harvest
 Permanent Sample Plots

Road Features

-  TCH
 Paved Roads
 Resource Roads
 Winter Roads
 T'Railway Provincial Park
 Trails

Linear Features

-  UTM Grid
 Contours
 Transmission Lines
 Protected Public Water Supply Area
 Wildlife Corridor

Administration Boundaries

- Management Boundary
 - - - - Ownership Boundary

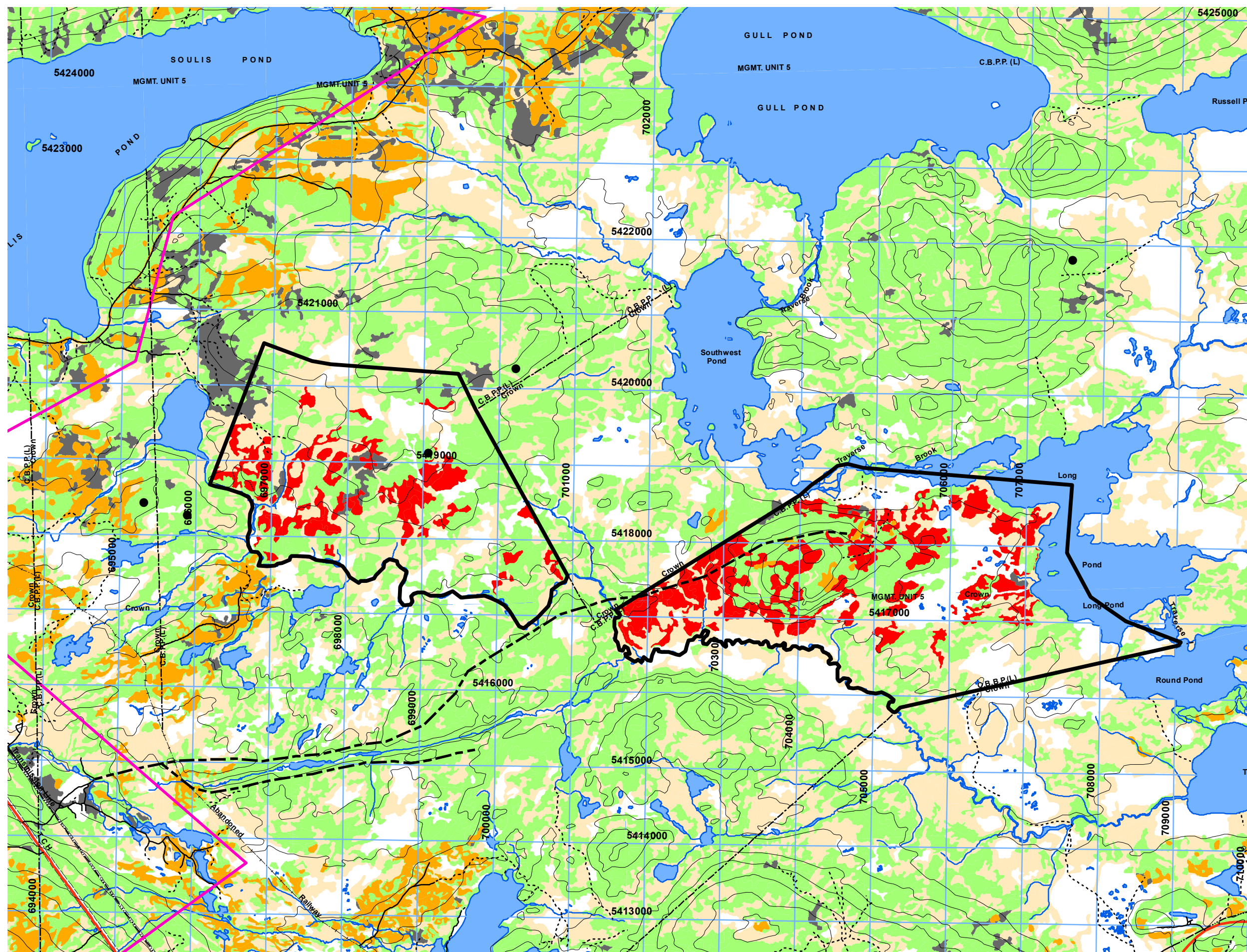
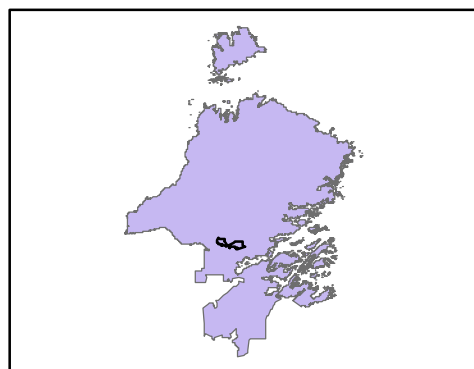
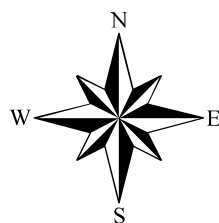
Land Features

- Forested Land
 Cutover
 Other disturbance

Water Features

- Waterbodies
 Brooks

Insert Map Showing
Five Year Plan Within District 05





CORNER BROOK PULP & PAPER LIMITED
FIVE YEAR OPERATING PLAN



FMD:	<u>05</u>	Plan Period:	<u>Jan 1, 2017 - Dec 31, 2021</u>
Operating Area:	<u>Joe Batts</u>	Inventory Map #:	<u>065, 077</u>
Harvest Area #:	<u>K-05-02</u>	NTS Map #:	<u>2E02, 2D15</u>

Forest Inventory

Gross

Volume: 78,772 m3
Area: 1,069 ha

Net

Volume: 72,268 m3
Area: 981 ha

Working Group

bF: 14 %
bS: 86 %

Operational Considerations:

Harvest System: Mechanical

Terrain Conditions: Predominately gentle terrain in combination with rolling hill top conditions, interspersed with rivers, ponds, streams and bogs.

Other Considerations:

CBPPL is currently in consultation with the Forest Management District 05 Outfitters located along the Gander River. Information packages containing proposed harvest sites and proposed road locations were sent to each individual outfitter requesting their input into the Forest Management Plan.

A portion of this operating block is within the Gander River Management Area and therefore subject to the regulations and conditions outlined in the Protection Plan. All required permitting and consultation will be carried out prior to any harvesting, road construction, or silviculture activities.

Reconnaissance surveys will be carried out on harvested areas. Silviculture prescriptions will be determined once assessments have been completed.

Corner Brook Pulp and Paper Woodlands developed a Sustainable Forest Management Plan as part of our registration to the ISO 14001 and CSA Z809 standards. For further information on the SFM plan visit our website @ <http://www.cbppl.com/>.

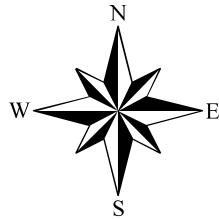


Forest Management District 05
Five Year Plan (2017- 2021)

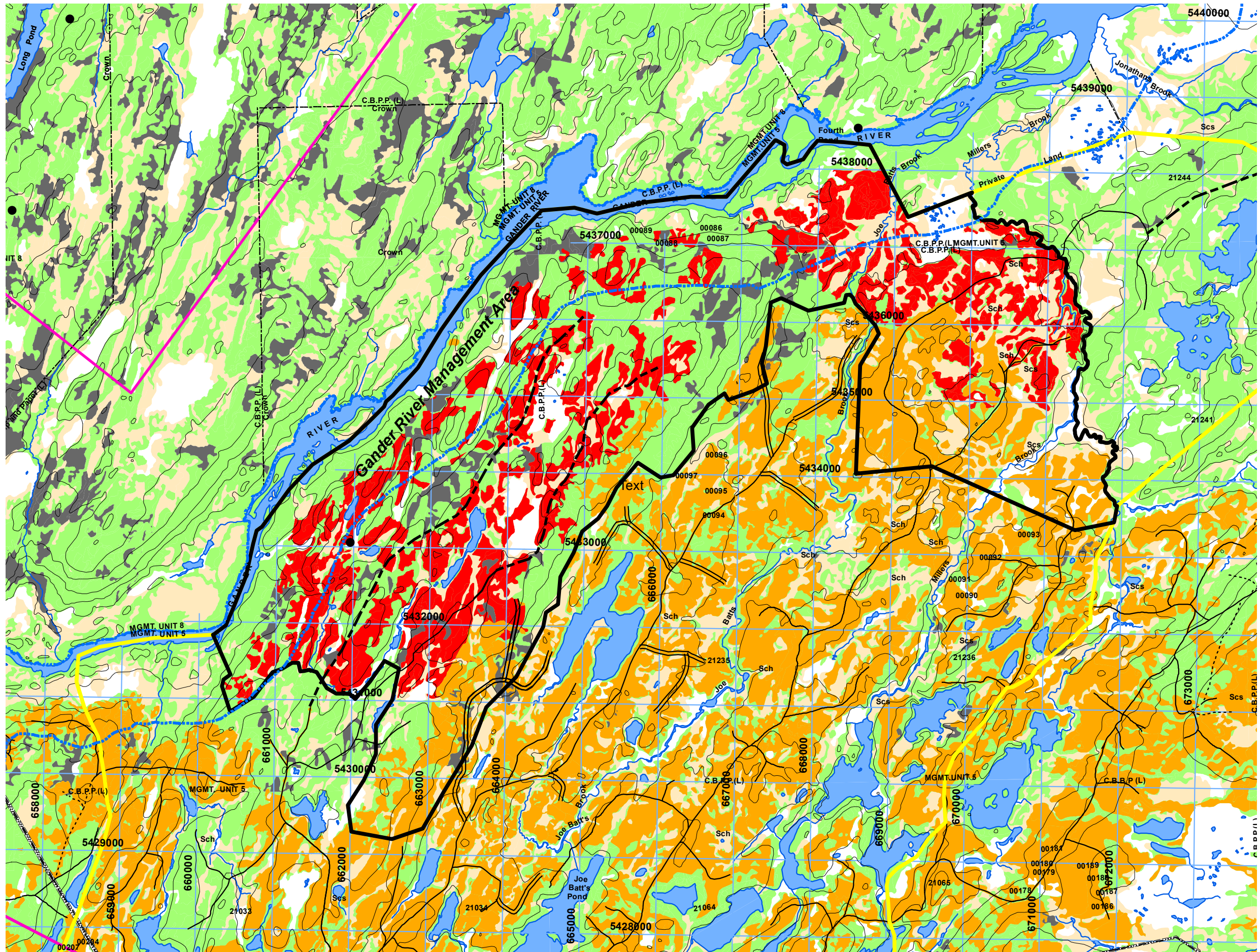
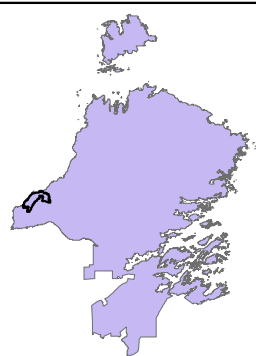
Joe Batts
(K - 05 - 02)
Scale:1:50,000

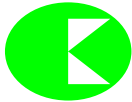
Forest Inventory Map 065-077
NTS Map 2E02-2D15

- LEGEND**
- Five Year Plan Features**
- Five Year Plan Boundary
 - Proposed Silviculture Area
 - Proposed Primary Road
 - Proposed Harvest
 - Permanent Sample Plots
- Road Features**
- TCH
 - Paved Roads
 - Resource Roads
 - Winter Roads
 - T'Railway Provincial Park
 - Trails
- Linear Features**
- UTM Grid
 - Contours
 - Transmission Lines
 - Protected Public Water Supply Area
 - Wildlife Corridor
 - Gander River Management Area
- Administration Boundaries**
- Management Boundary
 - Ownership Boundary
- Land Features**
- Forested Land
 - Cutover
 - Other disturbance
 - Scrub
- Water Features**
- Waterbodies
 - Brooks



Insert Map Showing
Five Year Plan Within District 05





CORNER BROOK PULP & PAPER LIMITED
FIVE YEAR OPERATING PLAN



FMD:	<u>05</u>	Plan Period:	<u>Jan 1,2017 - Dec 31, 2021</u>
Operating Area:	<u>Boot Pond</u>	Inventory Map #:	<u>066, 078</u>
Harvest Area #:	<u>K-05-06</u>	NTS Map #:	<u>2E01, 2D16</u>

Forest Inventory

Gross

Volume: 2,834 m3
Area: 42 ha

Net

Volume: 2,600 m3
Area: 39 ha

Working Group

bF: 13 %
bS: 87 %

Operational Considerations:

Harvest System: Mechanical

Terrain Conditions: Predominately gentle terrain in combination with rolling hill top conditions, interspersed with rivers, ponds, streams and bogs.

Other Considerations:

Reconnaissance surveys will be carried out on harvested areas. Silviculture prescriptions will be determined once assessments have been completed.

This area falls within the municipal area for the town of Gander. CBPP will consult with the town of Gander prior to any harvesting or road development and necessary permits will be attained.

Corner Brook Pulp and Paper Woodlands developed a Sustainable Forest Management Plan as part of our registration to the ISO 14001 and CSA Z809 standards. For further information on the SFM plan visit our website @ <http://www.cbppi.com/>.



Forest Management District 05
Five Year Plan (2017- 2021)

Boot Pond
(K - 05 - 27)
Scale:1:25,000

Forest Inventory Map 066-078
NTS Map 2E01-2D16

LEGEND

Five Year Plan Features

- Five Year Plan Boundary
- Proposed Silviculture Area
- Proposed Primary Road
- Proposed Harvest
- Permanent Sample Plots

Road Features

- TCH
- Paved Roads
- Resource Roads
- Winter Roads
- T'Railway Provincial Park
- Trails

Linear Features

- UTM Grid
- Contours
- Transmission Lines
- Protected Public Water Supply Area
- Wildlife Corridor

Administration Boundaries

- Management Boundary
- Ownership Boundary

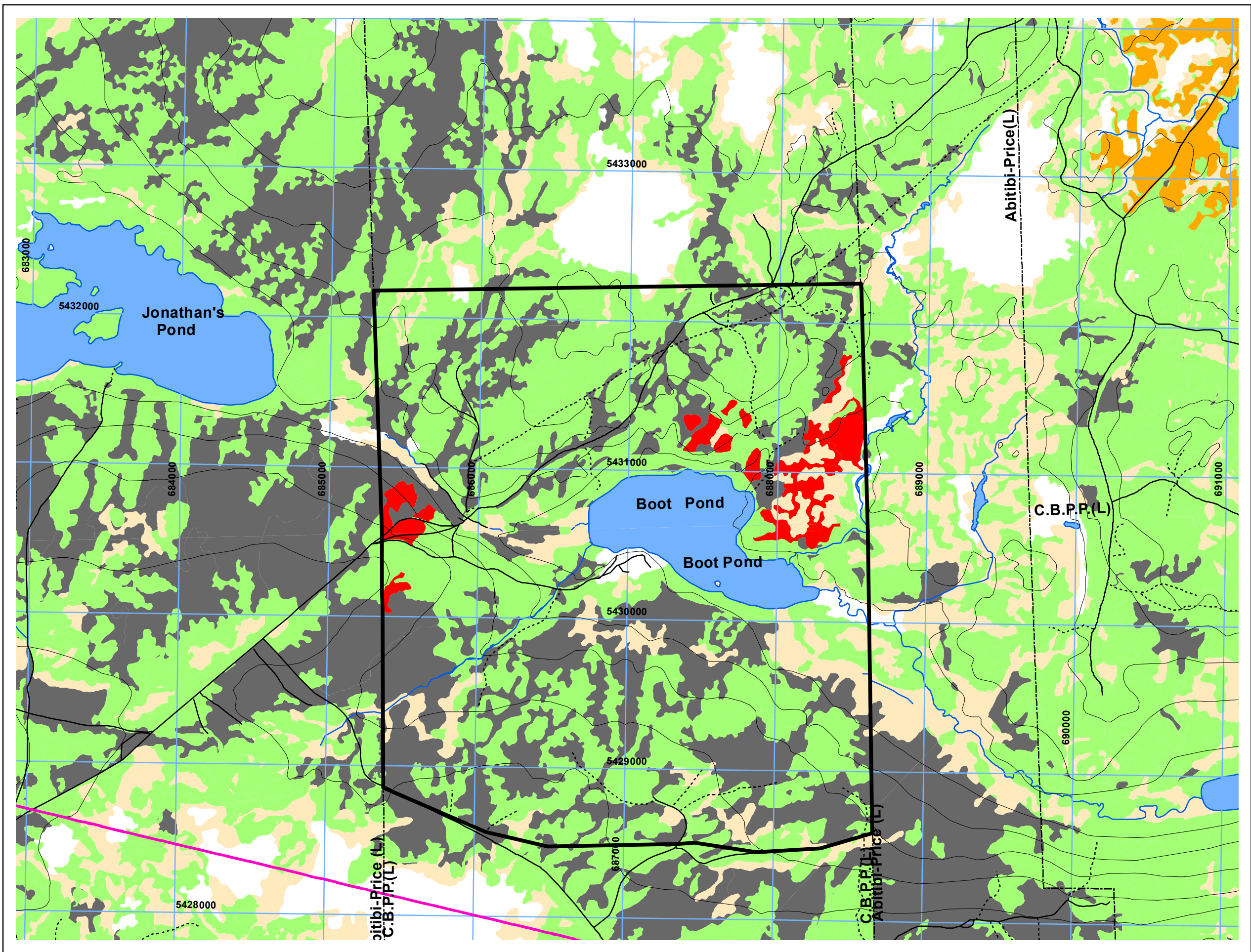
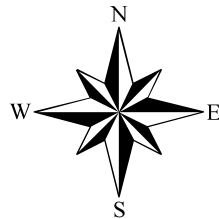
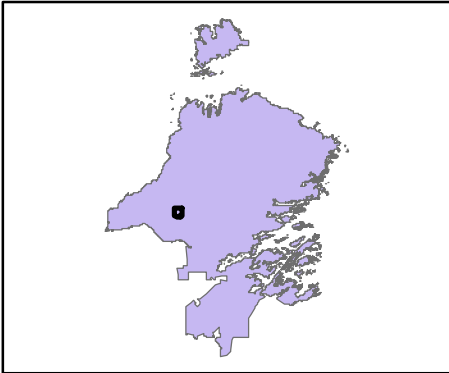
Land Features

- Forested Land
- Cutover
- Other disturbance
- Scrub

Water Features

- Waterbodies
- Brooks

Insert Map Showing
Five Year Plan Within District 05





CORNER BROOK PULP & PAPER LIMITED
FIVE YEAR OPERATING PLAN



FMD:	<u>05</u>	Plan Period:	<u>Jan 1, 2017 - Dec 31, 2021</u>
Operating Area:	<u>Home Pond</u>	Inventory Map #:	<u>066, 078</u>
Harvest Area #:	<u>K-05-07</u>	NTS Map #:	<u>2E01, 2D16</u>

Forest Inventory

Gross

Volume: 121,859 m3
Area: 1,389 ha

Net

Volume: 111,797 m3
Area: 1,274 ha

Working Group

bF: 11 %
bS: 89 %

Operational Considerations:

Harvest System: Mechanical

Terrain Conditions: Predominately gentle terrain in combination with rolling hill top conditions, interspersed with rivers, ponds, streams and bogs.

Other Considerations:

CBPPL is currently consulting with the Indian Bay Ecosystem Corporation (IBEC) to develop a new Memorandum of Understanding (MOU) for activities planned within the Home Pond operating area. CBPPL is committed to honoring past MOU's which included increased buffer widths, harvest deferral areas, and an access management plan. Current consultations will result in a new agreement.

This operating area is partially contained inside the Protected Water Supply for the Town of Indian Bay. Forestry activities will conform with the Environmental Protection Guidelines related to operations within Protected Water Supply Areas.

Reconnaissance surveys will be carried out on harvested areas. Silviculture prescriptions will be determined once assessments have been completed.

Corner Brook Pulp and Paper Woodlands developed a Sustainable Forest Management Plan as part of our registration to the ISO 14001 and CSA Z809 standards. For further information on the SFM plan visit our website @ <http://www.cbppl.com/>.



Forest Management District 05
Five Year Plan (2017- 2021)

Home Pond Overview
(K - 05- 07)
Scale:1:50,000

Forest Inventory Map 066-078
NTS Map 2E01-2D16

LEGEND

Five Year Plan Features

- Five Year Plan Boundary
- Proposed Silviculture Area
- Proposed Primary Road
- Proposed Harvest
- Permanent Sample Plots

Road Features

- TCH
- Paved Roads
- Resource Roads
- Winter Roads
- T'Railway Provincial Park
- Trails

Linear Features

- UTM Grid
- Contours
- Transmission Lines
- Protected Public Water Supply Area
- Wildlife Corridor

Administration Boundaries

- Management Boundary
- Ownership Boundary

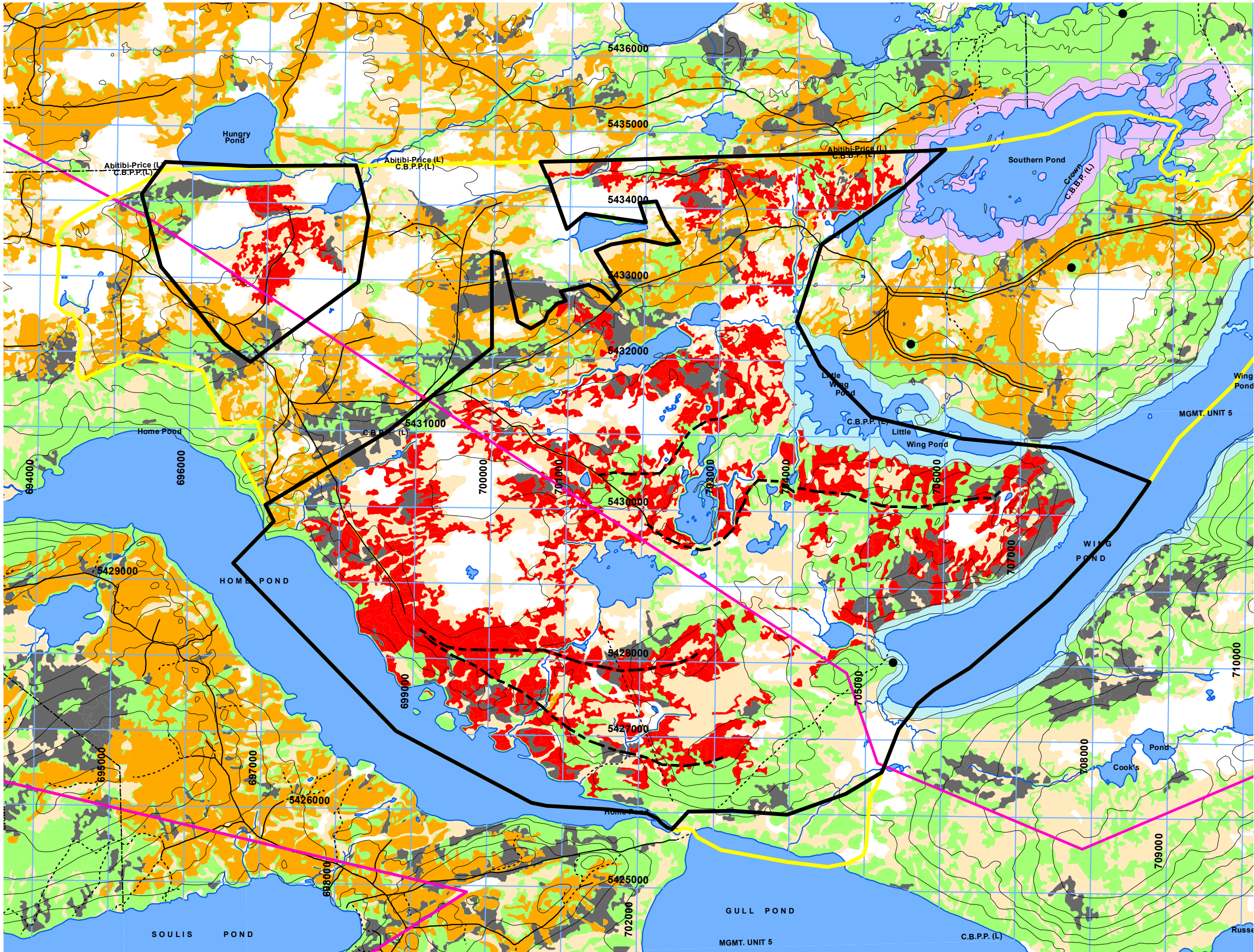
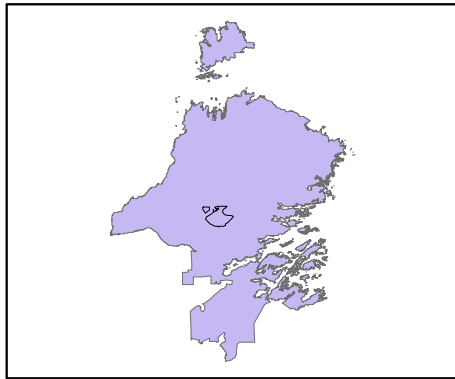
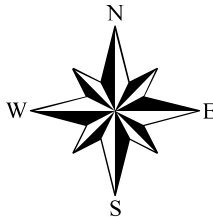
Land Features

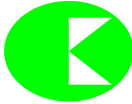
- Forested Land
- Cutover
- Other disturbance
- Scrub

Water Features

- Waterbodies
- Brooks

Insert Map Showing
Five Year Plan Within District 05





CORNER BROOK PULP & PAPER LIMITED
FIVE YEAR OPERATING PLAN



FMD: 05 **Plan Period:** Jan 1,2017 - Dec 31, 2021
Operating Area: Jonathans Pond **Inventory Map #:** 065
Harvest Area #: K-05-16 **NTS Map #:** 2E02

Forest Inventory

Gross

Volume: 197,205 m3
Area: 1,934 ha

Net

Volume: 180,922 m3
Area: 1,774 ha

Working Group

bF: 15 %
bS: 85 %

Operational Considerations:

Harvest System: Mechanical

Terrain Conditions: Predominately gentle terrain in combination with rolling hill top conditions, interspersed with rivers, ponds, streams and bogs.

Other Considerations:

CBPPL is currently in consultation with the Forest Management District 05 Outfitters located along the Gander River. Information packages containing proposed harvest sites and proposed road locations were sent to each individual outfitter requesting their input into the Forest Management Plan.

A 100 meter buffer will be maintained on the southwest portion of Jonathans Pond as per the request from the Central Regional Lands Office.

Reconnaissance surveys will be carried out on harvested areas. Silviculture prescriptions will be determined once assessments have been completed.

A portion of this operating block is within the Gander River Management Area and therefore subject to the regulations and conditions outlined in the Protection Plan. All required permitting and consultation will be carried out prior to any harvesting, road construction, or silviculture activities.

This area falls within the municipal area for the town of Gander. CBPP will consult with the town of Gander prior to any harvesting or road development and necessary permits will be attained.

Corner Brook Pulp and Paper Woodlands developed a Sustainable Forest Management Plan as part of our registration to the ISO 14001 and CSA Z809 standards. For further information on the SFM plan visit our website @ <http://www.cbppl.com/>.



Forest Inventory Map 065
NTS Map 2E02

Five Year Plan Features

-  Five Year Plan Boundary
-  Proposed Silviculture Area
-  Proposed Primary Road
-  Proposed Harvest
-  Permanent Sample Plots

Road Features

-  TCH
 Paved Roads
 Resource Roads
 Winter Roads
 T'Railway Provincial Park
 Trails





Linear Features

-  UTM Grid
 Contours
 Transmission Lines
 Protected Public Water Supply Area
 Wildlife Corridor
 Gander River Management Area


Administration Boundaries

- ■ ■ ■ ■ Management Boundary
- - - - - Ownership Boundary

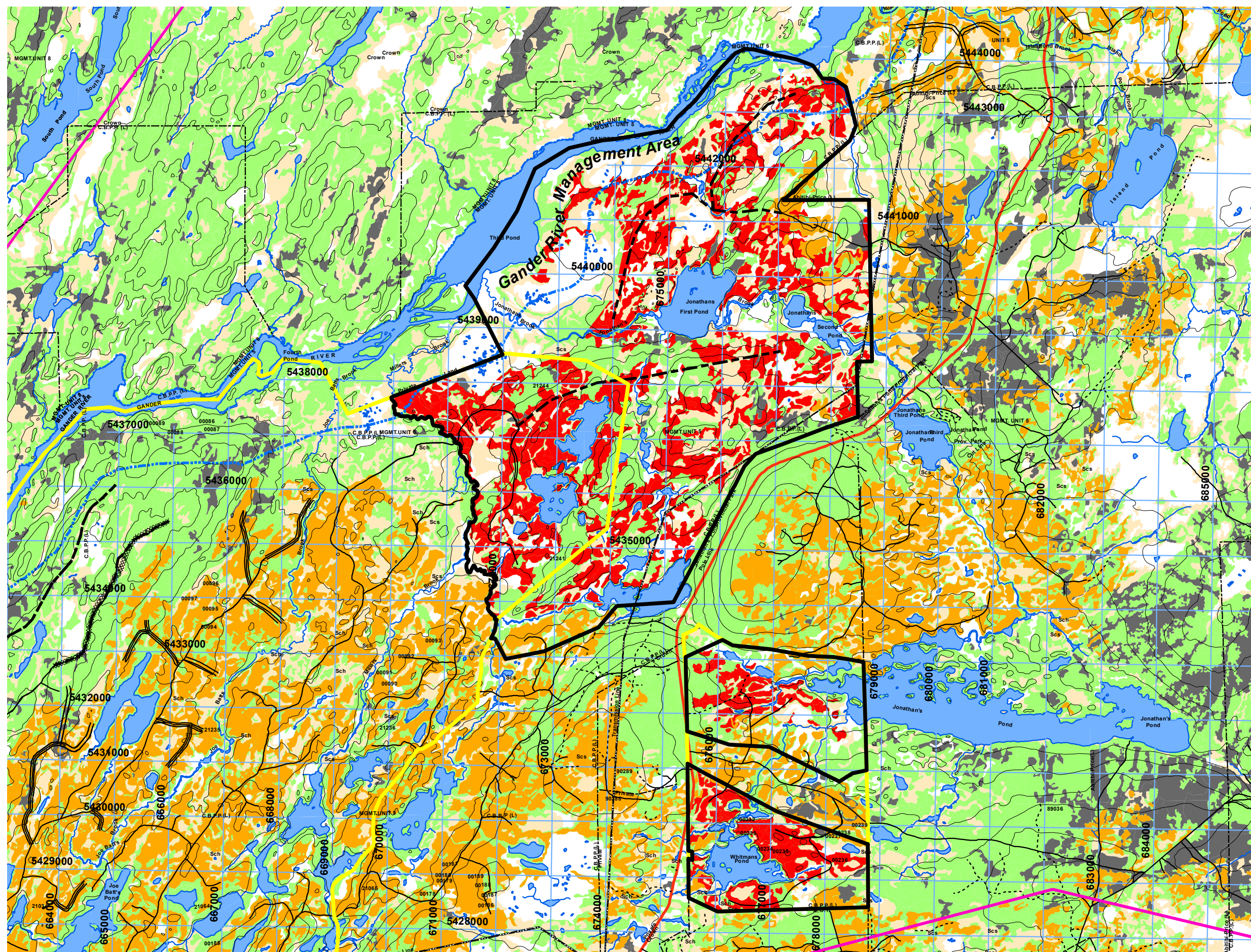
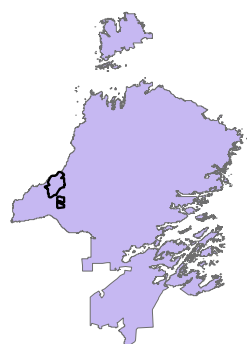
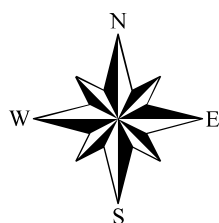
Land Features

-  Forested Land
 Cutover
 Other disturbance
 Scrub

Water Features

-  Waterbodies
 Brooks

Insert Map Showing
Five Year Plan Within District 05





Forest Management District 05
Five Year Plan (2017- 2021)

Jonathans Pond Map 1
(K - 05 - 16)
Scale:1:40,000

Forest Inventory Map 065
NTS Map 2E02

LEGEND

Five Year Plan Features

- Five Year Plan Boundary
- Proposed Silviculture Area
- Proposed Primary Road
- Proposed Harvest
- Permanent Sample Plots

Road Features

- TCH
- Paved Roads
- Resource Roads
- Winter Roads
- T'Railway Provincial Park
- Trails

Linear Features

- UTM Grid
- Contours
- Transmission Lines
- Protected Public Water Supply Area
- Wildlife Corridor
- Gander River Management Area

Administration Boundaries

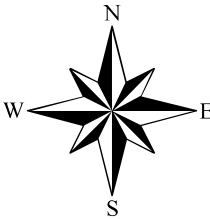
- Management Boundary
- Ownership Boundary

Land Features

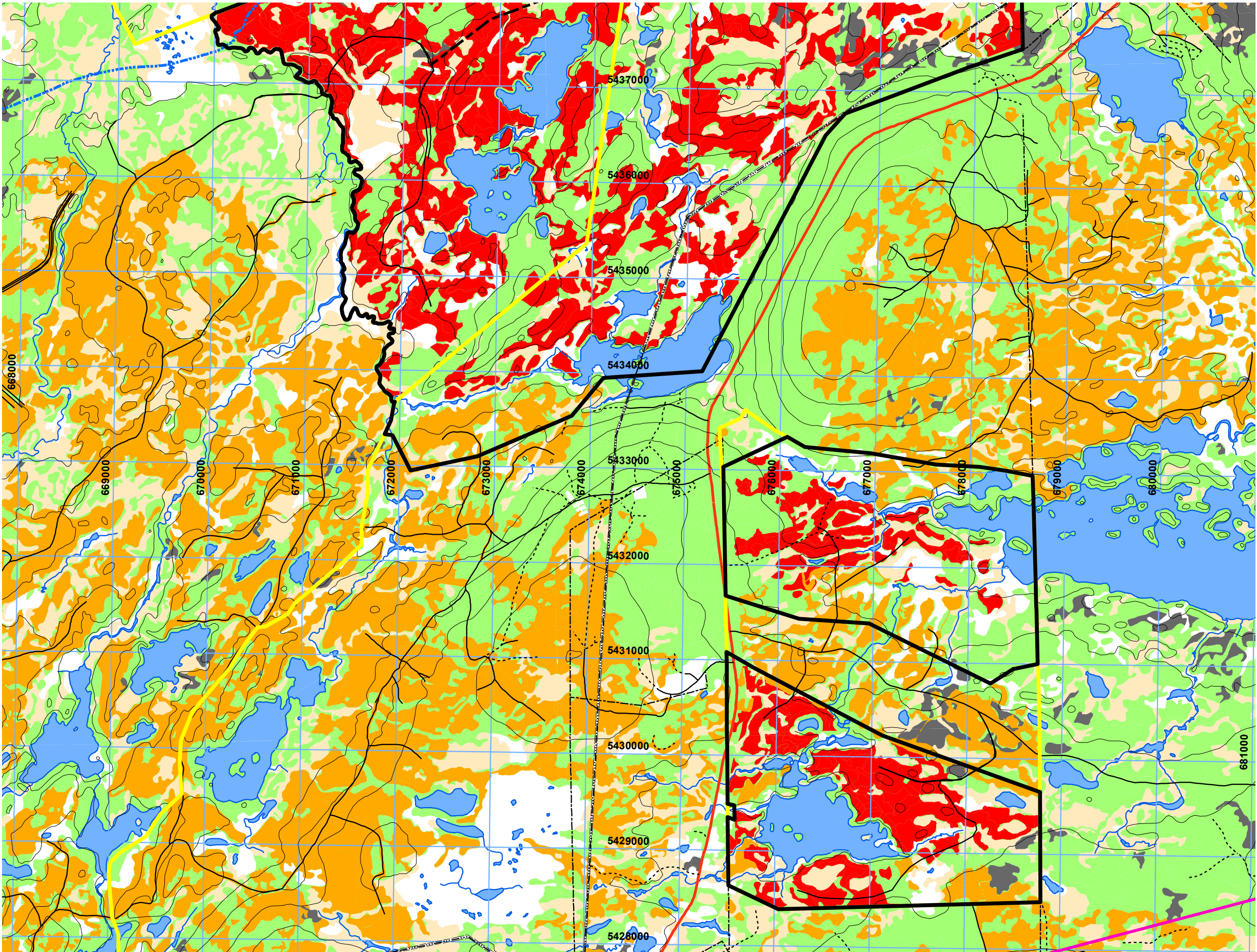
- Forested Land
- Cutover
- Other disturbance
- Scrub

Water Features

- Waterbodies
- Brooks



Insert Map Showing
Five Year Plan Within District 05



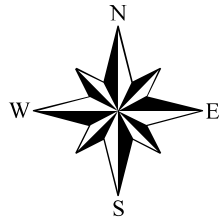


Forest Management District 05
Five Year Plan (2017- 2021)

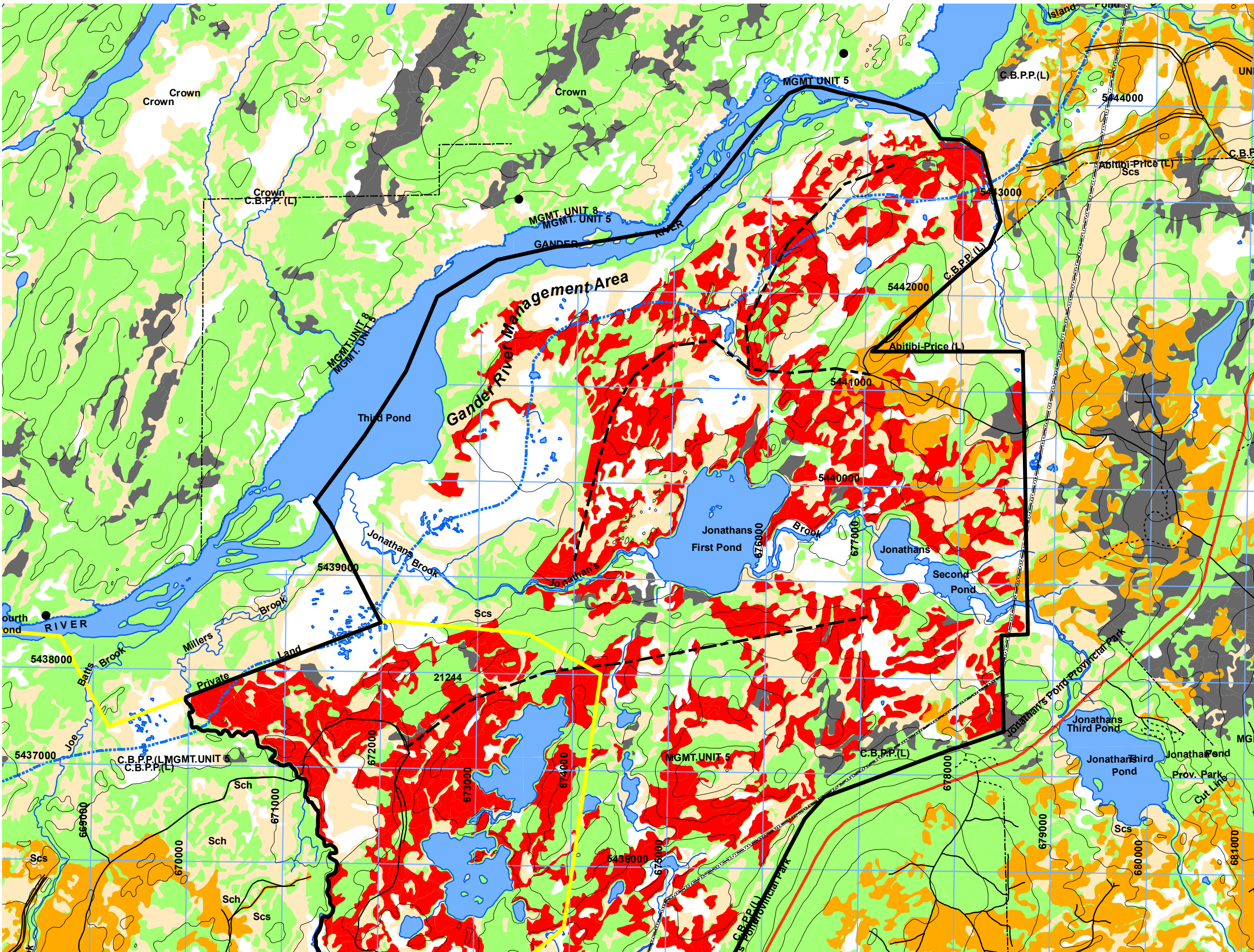
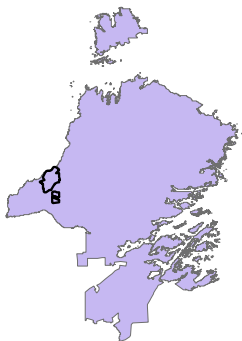
Jonathans Pond Map 2
(K - 05 - 16)
Scale:1:40,000

Forest Inventory Map 065
NTS Map 2E02

- LEGEND**
- Five Year Plan Features**
- Five Year Plan Boundary
 - Proposed Silviculture Area
 - Proposed Primary Road
 - Proposed Harvest
 - Permanent Sample Plots
- Road Features**
- TCH
 - Paved Roads
 - Resource Roads
 - Winter Roads
 - T'Railway Provincial Park
 - Trails
- Linear Features**
- UTM Grid
 - Contours
 - Transmission Lines
 - Protected Public Water Supply Area
 - Wildlife Corridor
 - Gander River Management Area
- Administration Boundaries**
- Management Boundary
 - Ownership Boundary
- Land Features**
- Forested Land
 - Cutover
 - Other disturbance
 - Scrub
- Water Features**
- Waterbodies
 - Brooks



Insert Map Showing
Five Year Plan Within District 05





CORNER BROOK PULP & PAPER LIMITED
FIVE YEAR OPERATING PLAN



FMD:	<u>05</u>	Plan Period:	<u>Jan 1,2017 - Dec 31, 2021</u>
Operating Area:	<u>Butts Pond</u>	Inventory Map #:	<u>078</u>
Harvest Area #:	<u>K-05-17</u>	NTS Map #:	<u>2D16</u>

Forest Inventory

Gross

Volume: 69,699 m3
Area: 1,015 ha

Net

Volume: 63,944 m3
Area: 931 ha

Working Group

bF: 37 %
bS: 63 %

Operational Considerations:

Harvest System: Mechanical

Terrain Conditions: Predominately gentle terrain in combination with rolling hill top conditions, interspersed with rivers, ponds, streams and bogs.

Other Considerations:

This operating area is partially contained inside the Protected Water Supply for the Town of Gander. Forestry activities will conform with the Environmental Protection Guidelines related to operations within Protected Water Supply Areas.

A Memorandum of Understanding (MOU) was reached between Corner Brook Pulp & Paper Ltd and the Freshwater Alexander Bay Ecosystem Corporation (FABEC) during the Five Year Plan consultation process. Corner Brook Pulp & Paper Ltd agreed to maintain a 150 meter buffer on Butts Pond and honor the access mitigation plan as in the previous MOU outline .

This area contains a cabin development area. Crown lands will be consulted to determine land titles before any development is undertaken.

Reconnaissance surveys will be carried out on harvested areas. Silviculture prescriptions will be determined once assessments have been completed.

This area falls within the municipal area for the town of Gander. CBPP will consult with the town of Gander prior to any harvesting or road development and necessary permits will be attained.

Corner Brook Pulp and Paper Woodlands developed a Sustainable Forest Management Plan as part of our registration to the ISO 14001 and CSA Z809 standards. For further information on the SFM plan visit our website @ <http://www.cbppl.com/>.

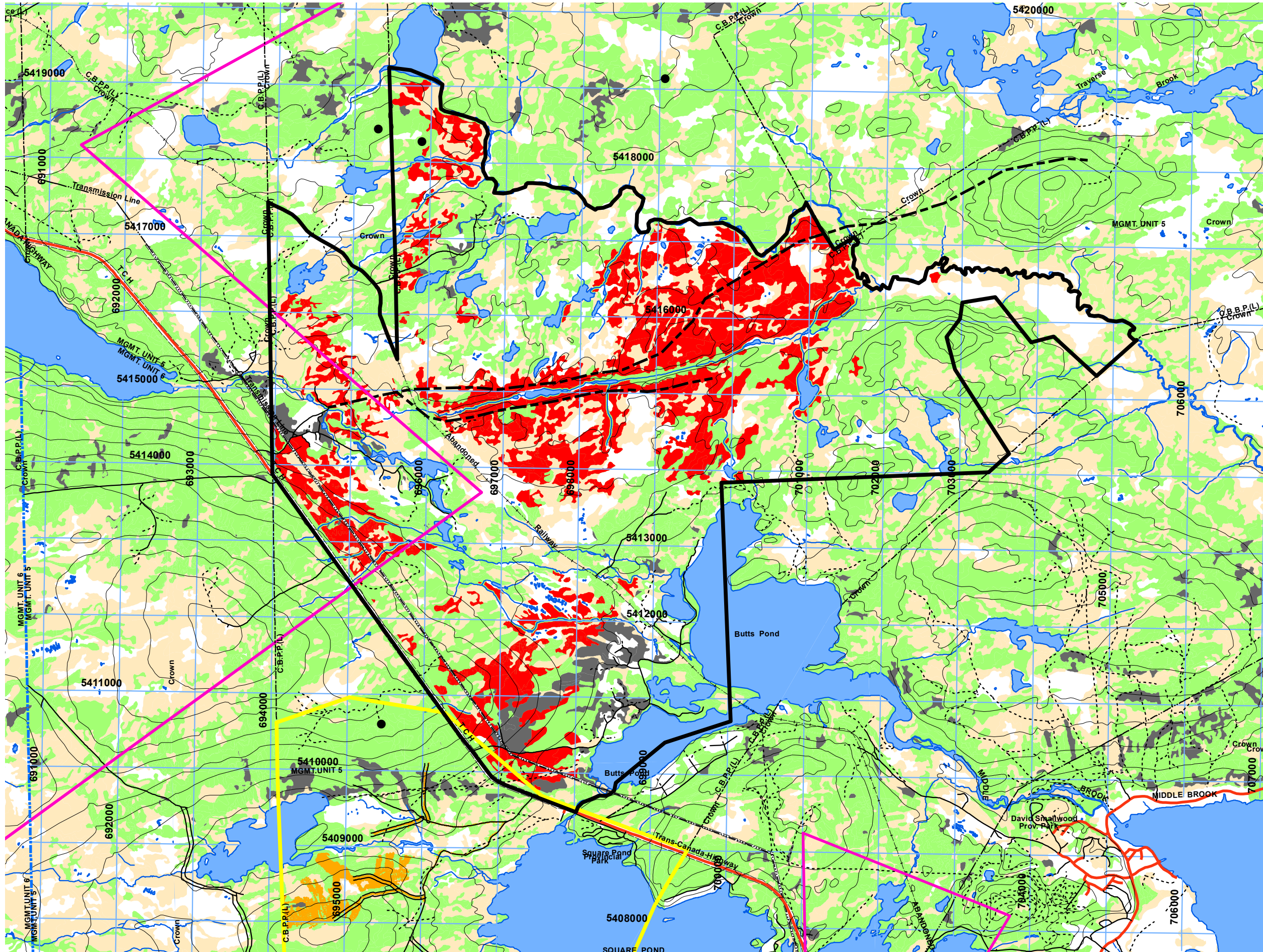
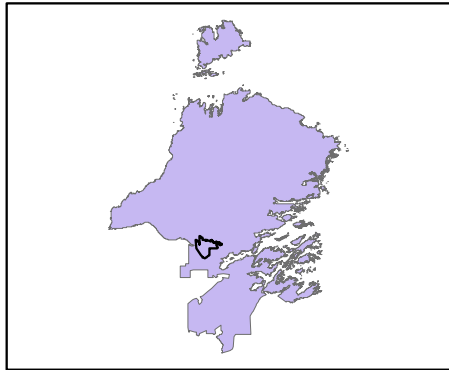
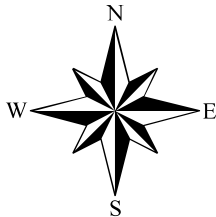


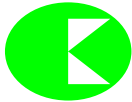
Forest Management District 05
Five Year Plan (2017- 2021)

Butts Pond
(K - 05 - 17)
Scale:1:50,000

Forest Inventory Map 078
NTS Map 2D16

- LEGEND**
- Five Year Plan Features**
- Five Year Plan Boundary
 - Proposed Silviculture Area
 - Proposed Primary Road
 - Proposed Harvest
 - Permanent Sample Plots
- Road Features**
- TCH
 - Paved Roads
 - Resource Roads
 - Winter Roads
 - T'Railway Provincial Park
 - Trails
- Linear Features**
- UTM Grid
 - Contours
 - Transmission Lines
 - Protected Public Water Supply Area
 - Wildlife Corridor
- Administration Boundaries**
- Management Boundary
 - Ownership Boundary
- Land Features**
- Forested Land
 - Cutover
 - Other disturbance
 - Scrub
- Water Features**
- Waterbodies
 - Brooks
- Insert Map Showing
Five Year Plan Within District 05





CORNER BROOK PULP & PAPER LIMITED
FIVE YEAR OPERATING PLAN



FMD:	<u>05</u>	Plan Period:	<u>Jan 1,2017 - Dec 31, 2021</u>
Operating Area:	<u>Little Harbour</u>	Inventory Map #:	<u>077</u>
Harvest Area #:	<u>K-05-18</u>	NTS Map #:	<u>2D15</u>

Forest Inventory

Gross

Volume: 9,678 m3
Area: 113 ha

Net

Volume: 8,879 m3
Area: 104 ha

Working Group

bF: 12 %
bS: 88 %

Operational Considerations:

Harvest System: Mechanical

Terrain Conditions: Predominately gentle terrain in combination with rolling hill top conditions, interspersed with rivers, ponds, streams and bogs.

Other Considerations:

This operating area is partially contained inside the Protected Water Supply for the Town of Gander. Forestry activities will conform with the Environmental Protection Guidelines related to operations within Protected Water Supply Areas.

Reconnaissance surveys will be carried out on harvested areas. Silviculture prescriptions will be determined once assessments have been completed.

This area falls within the municipal area for the town of Gander. CBPP will consult with the town of Gander prior to any harvesting or road development and necessary permits will be attained.

Corner Brook Pulp and Paper Woodlands developed a Sustainable Forest Management Plan as part of our registration to the ISO 14001 and CSA Z809 standards. For further information on the SFM plan visit our website @ <http://www.cbppi.com/>.



Forest Management District 05
Five Year Plan (2017- 2021)

Little Harbour
(K - 05 - 18)
Scale:1:30,000

Forest Inventory Map 077
NTS Map 2D15

LEGEND

Five Year Plan Features

- Five Year Plan Boundary
- Proposed Silviculture Area
- Proposed Primary Road
- Proposed Harvest
- Permanent Sample Plots

Road Features

- TCH
- Paved Roads
- Resource Roads
- Winter Roads
- T'Railway Provincial Park
- Trails

Linear Features

- UTM Grid
- Contours
- Transmission Lines
- Protected Public Water Supply Area
- Wildlife Corridor

Administration Boundaries

- Management Boundary
- Ownership Boundary

Land Features

- Forested Land
- Cutover
- Other disturbance
- Scrub

Water Features

- Waterbodies
- Brooks

Insert Map Showing
Five Year Plan Within District 05

