

OCT 25 2017

File # 2.2313.0302

Reg. #1918

Mr. Dean Snow, CEO
D.T. Triple C Inc.
6 Fox Head Cove Road
PO Box 166
Change Islands NL A0G 1R0

Dear Mr. Snow:

RE: Change Islands Quarry Access Road

Your proposal has been reviewed by an interdepartmental screening committee and an opportunity to comment has been provided to the public as required by the Newfoundland and Labrador Environmental Protection Act, SNL 2002, cE-14.2. Please be advised that this undertaking is **released** from further environmental assessment, subject to the following condition:

- A “no cut” area surrounding the quarry and defined in the attached maps must be adhered to, in order to preserve and protect views from Partridge Cove and its beach.

The Department of Transportation and Works advises that the intersection of the quarry access road and the main road to Change Islands shall be located 150 metres south of the existing access road to the Newfoundland Pony Sanctuary, in order to achieve the required sight distances for access roads.

The Department of Transportation and Works informs that a 600 mm diameter culvert is required for drainage across the access road driveway, and advises you to follow the attached standard access diagrams for proper construction techniques.

The Department of Fisheries and Land Resources advises that mineral exploration is a land use that can be expected in the general area in the future, and you shall not prevent other land users from using the proposed access road. Mineral exploration and quarrying activities that may overlap or interfere with one another, including access to these activities,

shall be coordinated between the parties to ensure safety and the reasonable accommodation of each party's activities.

The Department of Municipal Affairs and Environment advises that a permit is required under the Water Resources Act, 2002, for any work in a body of water or wetland, including but not limited to the installation and /or construction of culverts, bridges and diversion channels.

The Department of Municipal Affairs and Environment supports Environment and Climate Change Canada's (ECCC) recommendation that, in order to avoid nest destruction and to accommodate the breeding season of migratory songbirds and waterfowl, activities such as land clearing should be avoided during the regional nesting period for migratory birds. The breeding season for most birds within the project area occurs between April 15 and August 15 for landbirds, and April 1 through August 30 for seabirds.

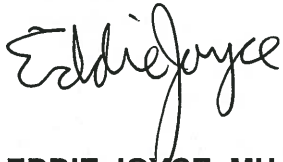
The Department of Municipal Affairs and Environment also supports ECCC's recommendations regarding wetland conservation: to avoid development on wetlands, to maintain a 30 metre buffer around wetland areas, to maintain the hydrologic function of nearby wetlands, and to direct any runoff from development away from wetlands.

Although the undertaking as proposed is released from further environmental assessment, it is still subject to other legislative requirements. A summary of the comments received from government agencies during the review is attached to provide an indication of likely applicable permits, approvals and legislative requirements. You must comply with all relevant legislation and obtain all necessary permits and approvals. You are required to inform this Department of any proposed significant changes to the undertaking.

You are encouraged to refer to the BizPaL website at www.bizpal.ca. BizPaL is an online tool that generates a list of permits, licenses and authorizations that may be required when starting or expanding a business. You are also encouraged to contact Canada Business Newfoundland and Labrador (CBNL) for any additional information you may need in dealing with various levels of government. CBNL serves as a first point of access to federal and provincial government services, programs and regulatory requirements for business. CBNL can be reached by telephone at 1-888-576-4444 or online at www.canadabusiness.gc.ca.

If you have any questions concerning these matters, please contact Dr. Susan Squires,
Director of Environmental Assessment Division, at (709) 729-0673 or email
susansquires@gov.nl.ca .

Sincerely,



EDDIE JOYCE, MHA
District of Humber-Bay of Islands
Minister of Municipal Affairs and Environment

cc. Derrick Bragg, MHA
District of Fogo Island-Cape Freels

Attachment

“NO CUT” AREA

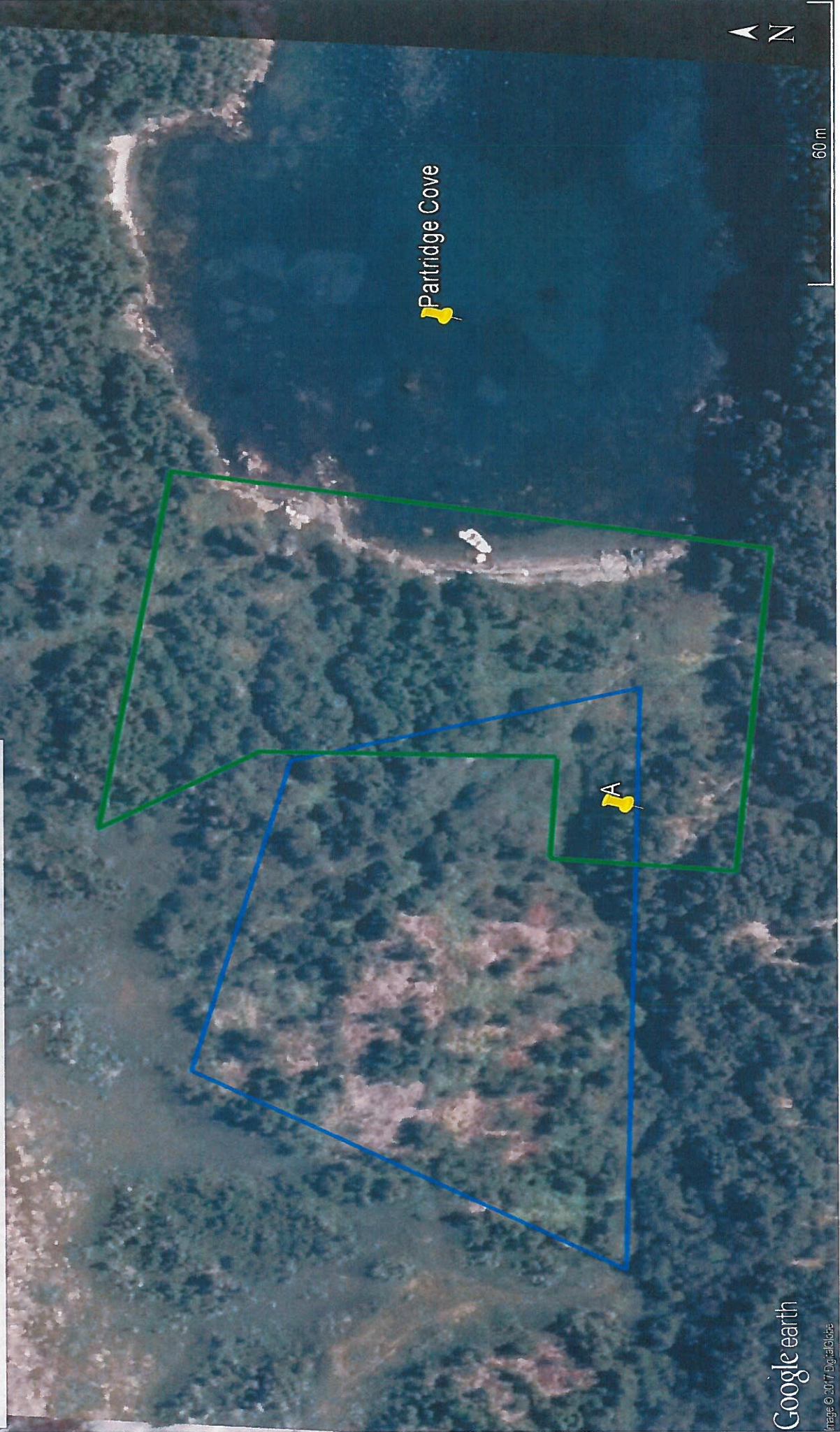
**Required by the Department of Natural Resources
Environmental Assessment Project #1918
Change Islands Quarry Access Road**

Mines Branch response for EA 1918 Change Islands quarry access road. Map 2 of 2.

blue outlined area = area covered by proponent's quarry permit (plotted according to imagery submitted by the proponent)

In order to ensure compliance with condition 4 of the proponent's quarry permit, trees must not be cut within the green outlined area. Condition 4 requires that natural tree screens be maintained to screen quarrying from view of the public, including waterbodies used by the public, such as Partridge Cove and its beach.

To clarify, the green outlined area extends inland to the vicinity of point A in order to ensure that trees remain in place which would serve to screen the quarry from the southernmost part of Partridge Cove and its beach.



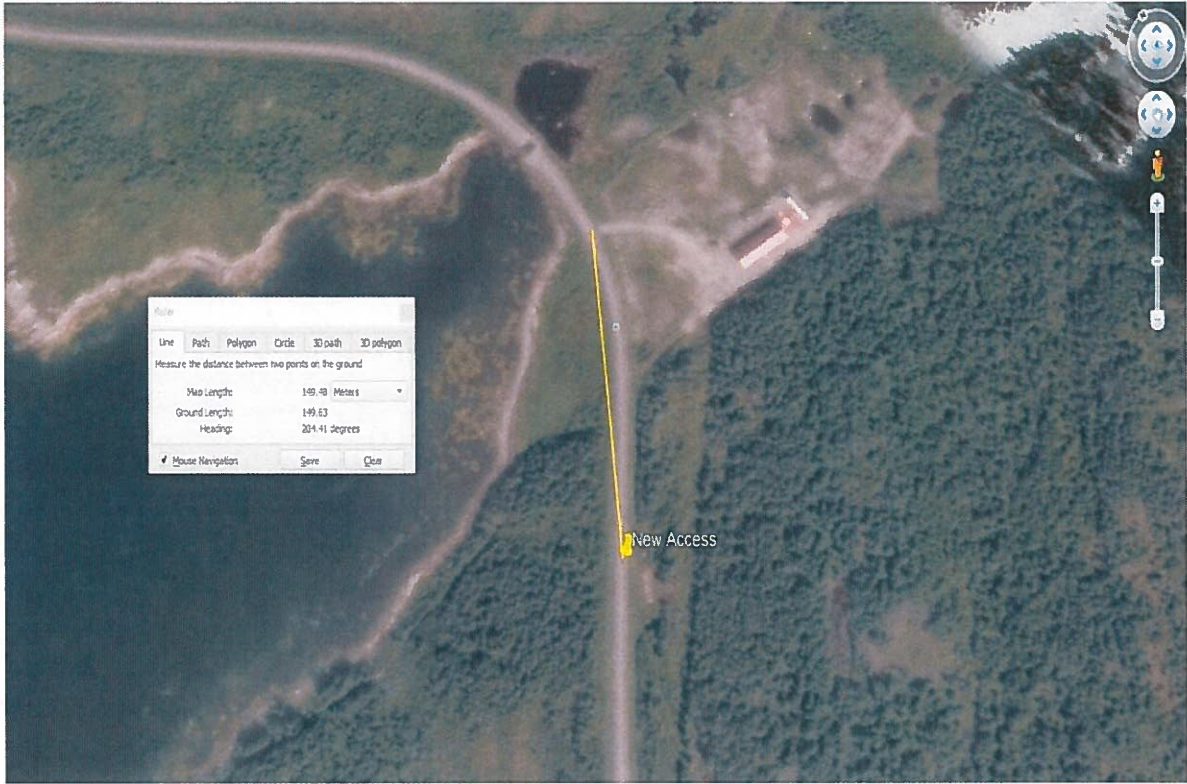
Mines Branch response for EA 1918 Change Islands quarry access road. Map 1 of 2.

blue outlined area = area covered by proponent's quarry permit (plotted according to imagery submitted by the proponent)

In order to ensure compliance with condition 4 of the proponent's quarry permit, trees must not be cut within the green outlined area. Condition 4 requires that natural tree screens be maintained to screen quarrying from view of the public, including waterbodies used by the public, such as Partridge Cove and its beach.

To clarify, the green outlined area extends inland to the vicinity of point A in order to ensure that trees remain in place which would serve to screen the quarry from the southernmost part of Partridge Cove and its beach.



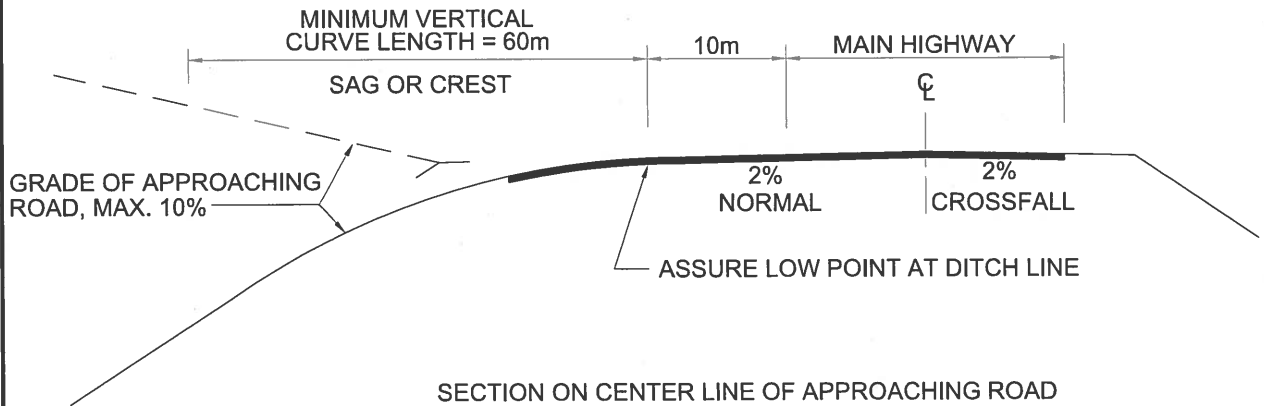
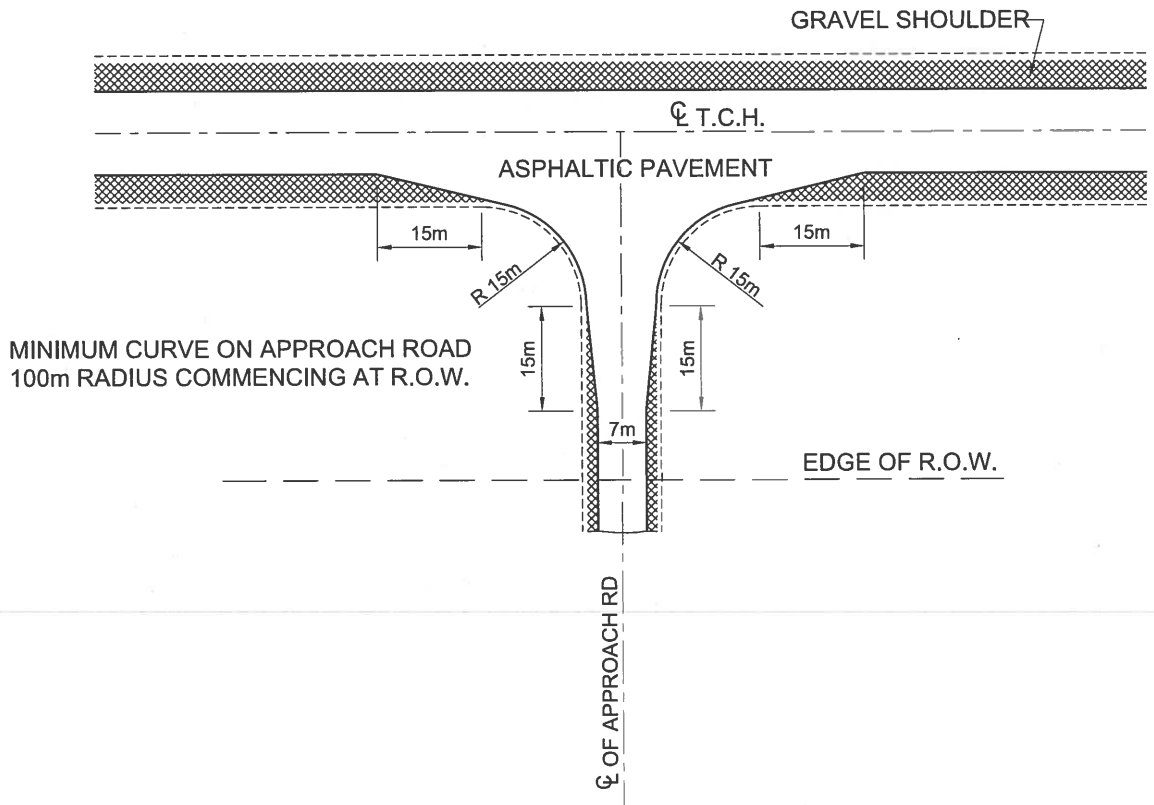


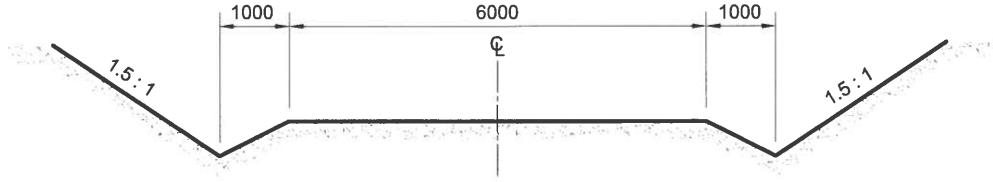
New Access

DIAGRAMS FOR ACCESS ROAD CONSTRUCTION

Department of Transportation and Works
Environmental Assessment Project # 1918
Change Islands Quarry Access Road

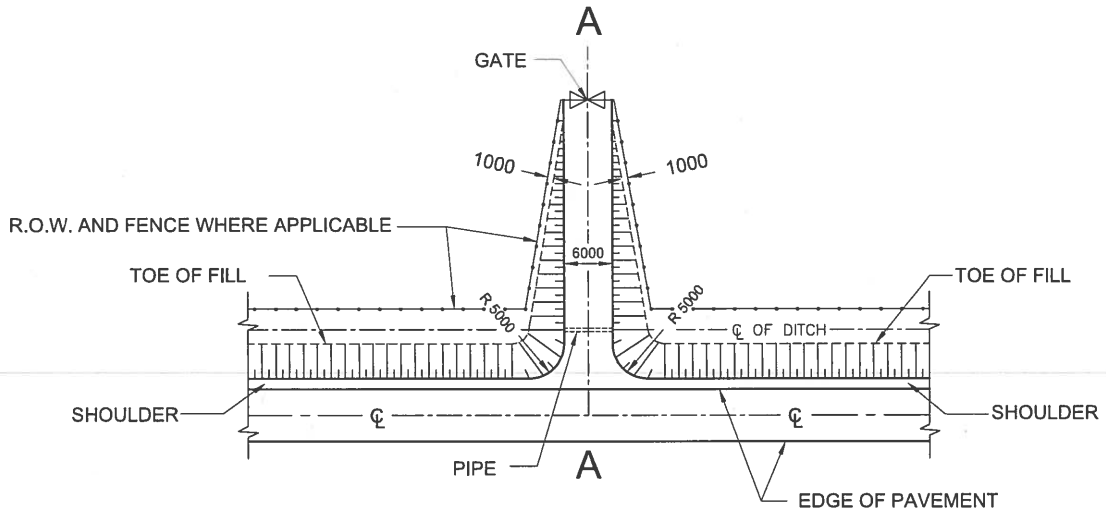
MINIMUM SIGHT DISTANCE 300m
 HEIGHT OF EYE = 1.0m HEIGHT OF OBJECT = 0.0m





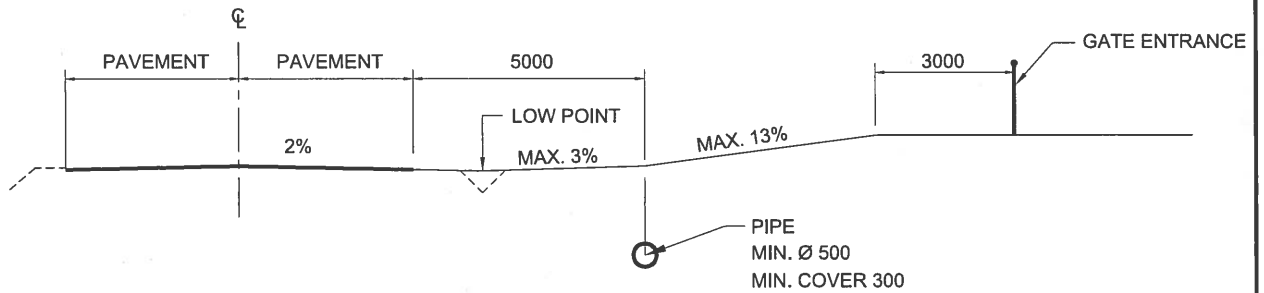
CROSS SECTION OF PRIVATE ENTRANCE

N.T.S.



PLAN

N.T.S.



SECTION A-A

SCALE 1 : 150



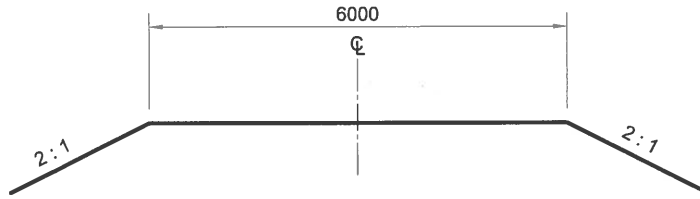
TRANSPORTATION AND WORKS
HIGHWAY DESIGN DIVISION

PRIVATE ENTRANCE IN CUT

DRAWN BY: DEB KIRBY

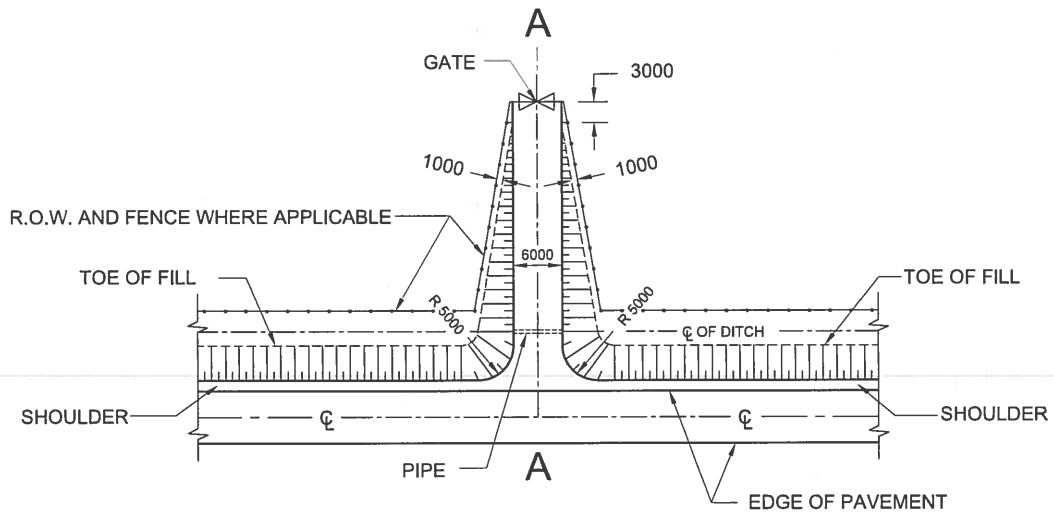
DATE: 02-01-10

SCALE N.T.S.



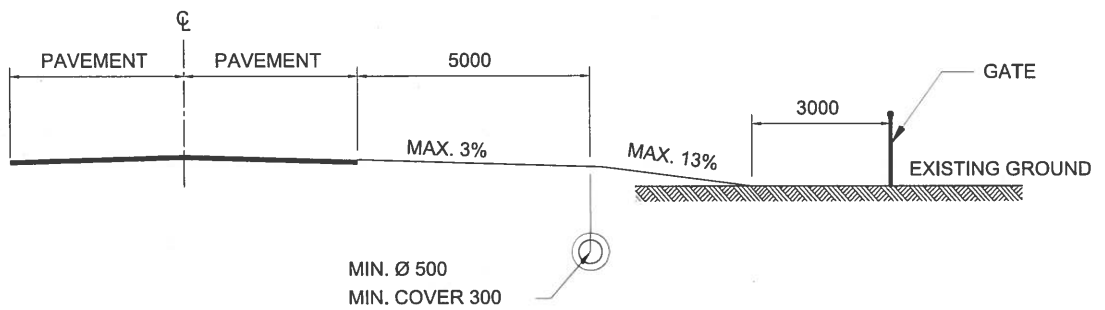
CROSS SECTION OF PRIVATE ENTRANCE

N.T.S.



PLAN

N.T.S.



SECTION A-A

N.T.S.



TRANSPORTATION AND WORKS
HIGHWAY DESIGN DIVISION

PRIVATE ENTRANCE IN FILL

DRAWN BY: DEB KIRBY

DATE: 02-01-10

SCALE N.T.S.