



**Newco Metal and Auto Recycling
Labrador West Metal Recycling Facility**

Environmental Assessment Registration
Pursuant to the Newfoundland & Labrador Environmental Protection Act

Submitted by:
Newco Metal and Auto Recycling
50 Robin Hood Bay Road
St. John's, NL
A1A 5V3

May 16th, 2019

1 Name of the Undertaking: Labrador City Metal Recycling Facility

2 Proponent

Name of Proponent: Newco Metal and Auto Recycling Ltd.

Address:

50 Robin Hood Bay Road
St. John's, NL
A1A 5V3

Chief Executive Officer:

Mr. Robert Anstey

President

Tel: 709-753-3070

Fax: 709-753-4892

Principal Contact Person for purposes of EA:

Mr. Don Drew

Operations Manager

Tel: 709-753-3070

Fax: 709-753-4892

3 The Undertaking

3.1 Name of the Undertaking

Newco Metal and Auto Recycling Ltd. (Newco) proposes to establish a metal recycling facility in Labrador West. The establishment will allow Newco Metal & Auto Recycling to expand its business, and be able to service the region with its wealth of experience and processing capabilities. The facility will consist of a (8) ha cleared area, with a building and weigh scales. The yard will receive, and store scrap material until it is processed and shipped away by Newco's mobile crews.

3.2 Purpose/Rationale/Need for the Undertaking

Currently in Labrador West, scrap metal material is either produced and exported to other provinces from local mines, collected by the local waste management sites, or by the current metal recycling business. Newco Metal & Auto Recycling is proposing the development of a facility near the landfill facility in Labrador City, as outlined in Figure 1 Labrador West.

Newco has analyzed a variety of location possibilities for the facility, taking into account the following criteria.

- a. Proximity to Trans Labrador Highway (RT500): Placement on this route will decrease the amount of trucking through the community or on side roads.
- b. Tree/Vegetation surroundings: An area that will allow for vegetation and trees between the road and the facility will limit visibility into the yard.
- c. Proximity to Residential and Commercial Developments: The selected location is away from developments within the community.

4 Description of the Undertaking

4.1 Geographical Location

The proposed site, approximately (8) hectares, is located on the Trans Labrador Highway (RT500), in Labrador City, NL. The property adjacent to the proposed land is the local landfill. The area now is uninhabited and undisturbed. A Google Earth screen capture shows the Project site and surrounding properties (Figure 1: Proposed Site – West).

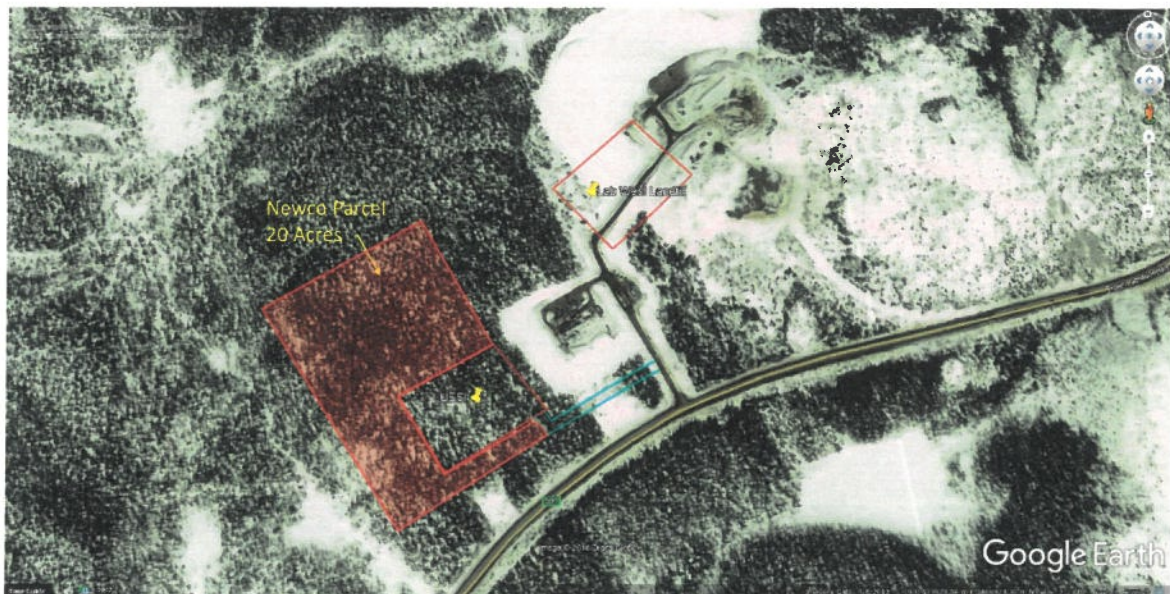


Figure 1: Proposed Site – Labrador West



Figure 2: Project Site and Surrounding Communities

4.2 Physical Features

The project site has an (8) ha. Area, and has the following key features:

- a. 40' x 60' Pre-Engineered Building (approximate size)
 - This building will house the non-ferrous metal weighing, storage, and preparation for export. It will also contain the washroom and office for management.
- b. Weigh Scales
 - Newco will be installing scales on the property for the purpose of weighting in/out scrap metal materials.
- c. Property Berm
 - Grubbing removed from site will be used to create a berm around the perimeter. The perimeter will be an effective barrier for reducing visibility onto the site from both the road and neighbors.
- d. Fenced/Gates Entrance
 - The entrance to the property will have a fence and gate.

The building on site will be similar to that shown in Figure 3: Site Building Example.



Figure 3: Site Building Example

4.2.1 Physical and Biological Environment

The environment in which this facility is to be located is adjacent to the local landfill. There are (3) bodies of water located near the facility. One located south-west of the facility (1000 m), and one located east (1800 m). The third is a small body of water, located across the street about 250 m from the proposed facility. The site is relatively level, and naturally slopes to the south-west direction, as indicated in Figure 4: Elevation & Terrain.

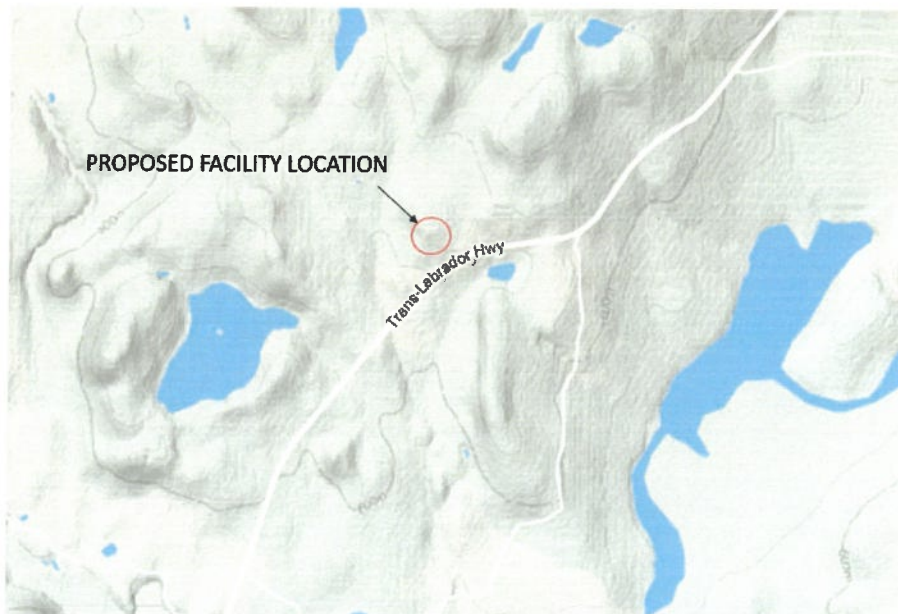


Figure 4: Elevation & Terrain

4.3 Construction

The total construction period will be approximately (4) months.

June 2019 to August 2019:

- a. Grubbing and Berm installation;
- b. Construction of entrance to road;
- c. Installation of 40' x 60' building;
- d. Installation of Scales & System;

During construction activities, measures will be taken to reduce or eliminate environmental interactions. For example, all equipment used will be in good working order with appropriate exhaust systems in place to reduce emissions and noise to the extent possible. As the site will be owned by Newco, access will be restricted to its employee and contractors. The site is used solely by Newco; therefore, no resource use conflicts are anticipated. The nature of the construction activity at the site will occur for a relatively brief period and the types and levels of activity will not be inconsistent with usage at adjacent sites (e.g., neighbouring landfill operations).

4.4 Operation

The operation of the facility will mainly consist of accepting all wrecked cars, whitegoods (appliances), non-ferrous metals, and any other scrap metal materials. The facility will receive and store all materials and have the ability to separate and prepare non-ferrous metals such as copper, aluminum, brass, stainless steel, etc.

Metal delivered to the site on company owned trucks, commercial haulers, and the general public is received on the solid surface concrete area. The operator of the material handler then sorts the material between heavy steel, tins, other metal, and non-recyclables. All scrap automobiles, white goods, and tins will be handled by heavy equipment including excavators with grab & magnet attachments and front-end loaders. Automobile and white good scrap will be processed (i.e. crushed and baled) in a two-week window annually under our mobile operations crew, operating under the Certificate of Approval (WMS-09-09-009), issued by the Department of Municipal Affairs and Environment. Automobile and white good scrap will be collected and stockpiled throughout the year until preliminary processing occurs. Draining at the site will consist of removing fluids from end of life cars and other products. Similar to any provincial garage the fluids will be stored in tanks with secondary containment. The draining will be done in a controls area to limit spillage. Used oil will be used for heating the new building. Other fluids will be disposed of by companies like Terrapur that specialize the handling and disposal of fluids. Gas will be filtered and reused in company trucks.

Further processing will occur at Newco's scrap metal processing facility located on Incinerator Road in St. John's. This includes further de-polluting through the SEDA auto de-polluting

systems, refrigerant containment in appliances, as well as at a facility installed on a fully contained concrete slab.

Heavy steel will be processed by throughout the year with a steel cutter using oxy-propane cutting torch, and once ready prepared, will be exported by vessel from Goose Bay, NL using Newcos scrap metal hauler trailers and tractor. Heavy steel will be handled on site using an excavator with grab & magnet attachment or front-end loaders.

Non-ferrous metals will be delivered and processed in the warehouse for export preparation. Processing of this material will be completed using manual methods with hand tools and power tools. The facility will accept copper in its various forms, all grades of stainless steel and aluminum, batteries, brass and more. Materials will be loaded in a shipping container and sent to Newco's primary Non-Ferrous processing hub located in St. John's, NL.

4.5 Occupations

Based on the current operation, the new facility will have the following staff when it is fully operational:

1x Manager, 50-60 hrs/week, all year.

2x Laborer, 50-60 hrs/weel, all year.

1x Steel Cutter (Seasonal), 50-60 hrs/week, in spring, summer and fall seasons.

5 Approval of the Undertaking

Newco will require approvals from the following to construct and operate the facility:

- a. Crown Lands, application has been submitted and is awaiting response from EAD.
- b. Town of Labrador City. The town has approved the crown land application and the principal of the project. Final approvals will follow the crown lands process.
- c. Environmental Assessment Division, Government of NL, as related to this document.

6 Schedule

It is expected that the requirements of the Environment Assessment Registration and Review and anticipated release will occur early June, allowing work to commence as per schedule, starting in July.

7 Funding

Funding for this project will be from private sources only.

8 Regulatory Requirements


The activities associated with this operation may involve, but are not limited to, the following Provincial Acts and Regulations:

- a. Environmental Protection Act
- b. Water Resources Act
- c. Storage and Handling of Gasoline and Associated Products Regulations, 2003
- d. Ozone Depleting Substances Regulations
- e. Environmental Control Water and Sewer Regulations.
- f. Dangerous Goods and Transportation Act and Regulations
- g. Fire Prevention Act and Regulations
- h. Air Pollution Control Regulations, 2004
- i. Halocarbon Regulations
- j. Used Oil Control Regulations
- k. Occupational Health and Safety Act and Regulations

9 Signature

May 16th, 2019

Date


for. Robert Anstey, President