

ENVIRONMENTAL ASSESSMENT REGISTRATION DOCUMENT



Round Pond Quarry

Prepared For:
JCL Investments Inc.
80 Hops Street
Conception Bay South, NL

September 2020



Contents

1.0 NAME OF UNDERTAKING	2
2.0 PROPONENT	2
3.0 THE UNDERTAKING	2
4.0 DESCRIPTION OF THE UNDERTAKING	3
5.0 APPROVAL OF THE UNDERTAKING	7
6.0 SCHEDULE	8
7.0 FUNDING	8
8.0 SUBMISSION.....	8
APPENDIX A.....	9



1.0 NAME OF UNDERTAKING

Round Pond Quarry

2.0 PROPONENT

2.1 Name of Corporate Body

JCL Investments Inc.

2.2 Address

80 Hops Street
Conception Bay South, NL
A1W 0E8

2.3 Chief Executive Officer

Brandon MacDonald, P.Eng
President and CEO, JCL Investment Inc.

2.4 Principal Contact Person

Sarah Kennedy, MRM, EP
1 Massey Drive Access Road
P.O. Box 817
Corner Brook, NL
A2H 6H6
Tel: (709) 639-2303
Fax: (709) 639-2312
Email: skennedy@jclinc.ca

3.0 THE UNDERTAKING

3.1 Nature of the Undertaking

The proposed project involves the development of an open pit-style quarry for the purpose of removing sand, gravel, and rock to support infrastructure developments on the northeast Avalon Peninsula.

3.2 Purpose/Rationale/Need for the Undertaking

This area is a potential source of bedrock (granite) and granite-derived sand and gravel deposits with physical properties suitable for the production of high-quality aggregate for use in construction applications. Suitable locations like this are limited on the Avalon, and will help produce Sand and Rock aggregate for the local construction industry.

4.0 DESCRIPTION OF THE UNDERTAKING

4.1 Geographic Location:

UTM: 22U 346374.18 E/ 5249258.89 N

The 36-hectare project area is located approximately 800 meters east of the Butter Pot Provincial Park interchange at the Trans-Canada Highway (TCH). Access will be via an existing gravel trail that intersects the eastbound lane of the TCH approximately 1.8 kilometers north of the Butter Pot Park interchange and south of Round Pond. The gravel trail is currently held under a “Permit to Construct” by Labrador-Island Link Corporation for access to the transmission line. Approximately 800 meters of new trail will be required to access the site. Please refer to Figure 1 for an overview and Appendix A for attached maps of the area.



Figure 1: Overview of the proposed area (yellow and red line)



4.2 Physical Features

The project area lies within the Newfoundland Uplands physiographic region which has relief ranging from 10s to 100s of meters above sea level. Elevations in the project area range from 200 to 245 meters within a relatively low-lying area separated by rock ridges along the east and west boundaries. The general topography consists of rolling hills interspersed with relatively small ponds and poorly drained boggy areas. The surficial expression of the area ranges from exposed bedrock to relatively thick (>5 meters) overburden mainly derived from glacial activity. The project area can be characterized as dominantly hummocky heathland with a stream to the east of the boundary and a number of small ponds. Approximately 7-hectare area in the northwest portion of the project area is more densely forested.

In terms of ecology, the area is located within the Southeastern Barrens Sub-region of the Maritime Barrens Ecoregion which is characterized by cool summers with frequent fog and strong winds. Winters are relatively mild with intermittent snow cover, particularly near the coastline. The landscape pattern consists of usually stunted, almost pure stands of Balsam Fir, broken by extensive open heathland. The area is home to moose, lynx, hares, ducks and a variety of other bird species and small animals. The small ponds in the area contain several species of fish.

4.3 Development

The development of the proposed quarry area will occur in a number of phases:

Access:

- a. Upgrading of existing gravel trail from the TCH to the project area
- b. Approximately 800 meters of new access will be developed from the trail to the project area

Quarry Area:

- a. stripping of vegetation and organic material
 - i. Trees will be harvested as directed by the Forestry Services Branch in the Department of Fisheries and Land Resources
- b. Stockpiling of organic material (including topsoil and grubbing) for rehabilitation and development of laydown areas
- c. Construction of settling pond(s) (if required)
- d. Phased development of quarry operations
 - i. Excavation, drilling, blasting, crushing/screening, washing (if required), stockpiling and loading of quarry materials (rock, sand and gravel).
- e. Transportation of product to market



Pending approval, site development is expected to commence in April 2021. The initial development will be completed within approximately 30 days of the Department of Natural Resources issuing quarry permits under the Quarry Materials Act, 1998.

4.4 Operation

The project area will be regulated under the Quarry Materials Act, 1998 and the Mining Act, 1999. Operations may include, but are not limited to, the removal of overburden material to expose sand and gravel deposits and/or bedrock. Sand and gravel deposits will be excavated directly and processed; bedrock will first be drilled and then blasted with explosives prior to excavation and processing. Processing includes crushing, screening, washing and stockpiling quarry materials using various types of equipment such as excavators, front-end loaders, primary, secondary, and tertiary crushers including complete conveyer systems to allow production of various aggregate end-products. Various sizes of dump trucks will be used for transportation to market. Non-licensed dump trucks (e.g., rock trucks) may be used within the project area, but only licensed trucks will be used on the access road and the TCH.

Activity at the site will likely be periodic from April to November annually; however, given the proximity to Butter Pot Provincial Park, drilling and blasting activities will not occur between May 24th and September 30th. Quarries are inspected regularly by the Department of Natural Resources' Quarry Materials Compliance Officers to ensure compliance with the Quarry Materials Act, 1998 and Mining Act, 1999, and terms and conditions of the quarry permit/lease.

The life expectancy of the operation is estimated to be 5 – 15 years, but this estimate is largely dependent on the demand for quarry materials in the region. Operations will be conducted in a logical, staged sequence to streamline and minimize the cost of final rehabilitation. A rehabilitation plan will be developed to meet acceptable environmental standards at closeout in conjunction with the regulatory authorities having jurisdiction.

There is also another quarry permit approval in the area (Quarry File No: 71111808). The quarry was approved in 2017 but no work has been done since the permit was issued.



4.5 Potential Sources of Pollution

Possible sources of pollutants include site drainage, noise, airborne emissions and possible fuel or oil spills.

- During development, as quarry material is excavated and moved from the site, there is potential for off-site drainage. Sedimentation control structures (e.g., silt fences, ditches, rock check dams, etc.) will be installed where recommended by appropriate departments through the Department of Natural Resources' quarry permit referral process. Any off-site runoff will be directed to vegetated areas to prevent siltation of waterbodies.
- Domestic waste generated will be collected and disposed of as per the Waste Management Regulations, 2003.
- All equipment on site will be furnished with appropriate emission and noise control devices and all vehicles will be properly maintained to minimize noise and exhaust.
- Petroleum products will be handled and stored as per Storage and Handling of Gasoline and Associated Products Regulations, 2003 and associated products regulations, under the Environmental Protection Act SNL 2002.

4.6 Potential Resource Conflicts during Operation

- This area is likely used by locals for recreational purposes such as hiking, hunting, fishing, etc. JCL will post notices on trails and roads to indicate quarry operations and will utilize protective berms and gates where appropriate in order to control access.
- There is an adjacent quarry permit approval (Quarry File No: 71111808) which abuts the project area. JCL will mark its boundaries to ensure the operation is wholly contained within the project area.



4.7 Occupations

Occupations at the site will include the following:

- 3 - Heavy Equipment Operators (e.g., excavator, loader and crusher operator) (7421)
- 2 - Dump truck drivers (7411)
- 1 - Quarry foreman/supervisor (8221)
- 1 - Laborer (7611)
- 1 - Heavy Equipment Mechanic (7311)

4.8 Project Related Documents

There are no project related documents.

5.0 APPROVAL OF THE UNDERTAKING

Approval Required	Issuing Authority
Quarry Permit	Mineral Lands Division, Department of Natural Resources
Commercial Cutting Permit	Forestry Services Branch - Department of Fisheries and Land Resources
Operating Permit Development Permit (Butter Pot - Witless Bay Line Environs	Forestry Services Branch – Department of Fisheries and Land Resources
Nav Canada Land Use Permit - APPROVED	Nav Canada
Water Use License	Water Resources Management Division, Department of Municipal Affairs and Environment
Crown Lands – License to Occupy	Access Road
Approval to use the established Access Road	Department of Transportation and Works
Witless Bay Line Environs Development Control Regulations Access to Quarry	Service NL



6.0 SCHEDULE

The earliest start date of this undertaking is late fall of 2020 should all of the regulatory approvals be in place. Once development has begun it will continue on an annual basis between April and December of each year and in accordance with the demands of the construction industry.

Summary

Registration Document Submission	September 2020
Government Review and Decision	October 2020
Construction/Operations 2021	Late Fall 2020 / Early Spring

7.0 FUNDING

The funding for this project will be provided entirely by JCL Investments Inc.

8.0 SUBMISSION

September 4, 2020
Date

A handwritten signature in blue ink, appearing to read 'Brandon MacDonald', is written over a horizontal line.

Name: Brandon MacDonald, P.Eng
President and CEO – JCL Inc.



APPENDIX A

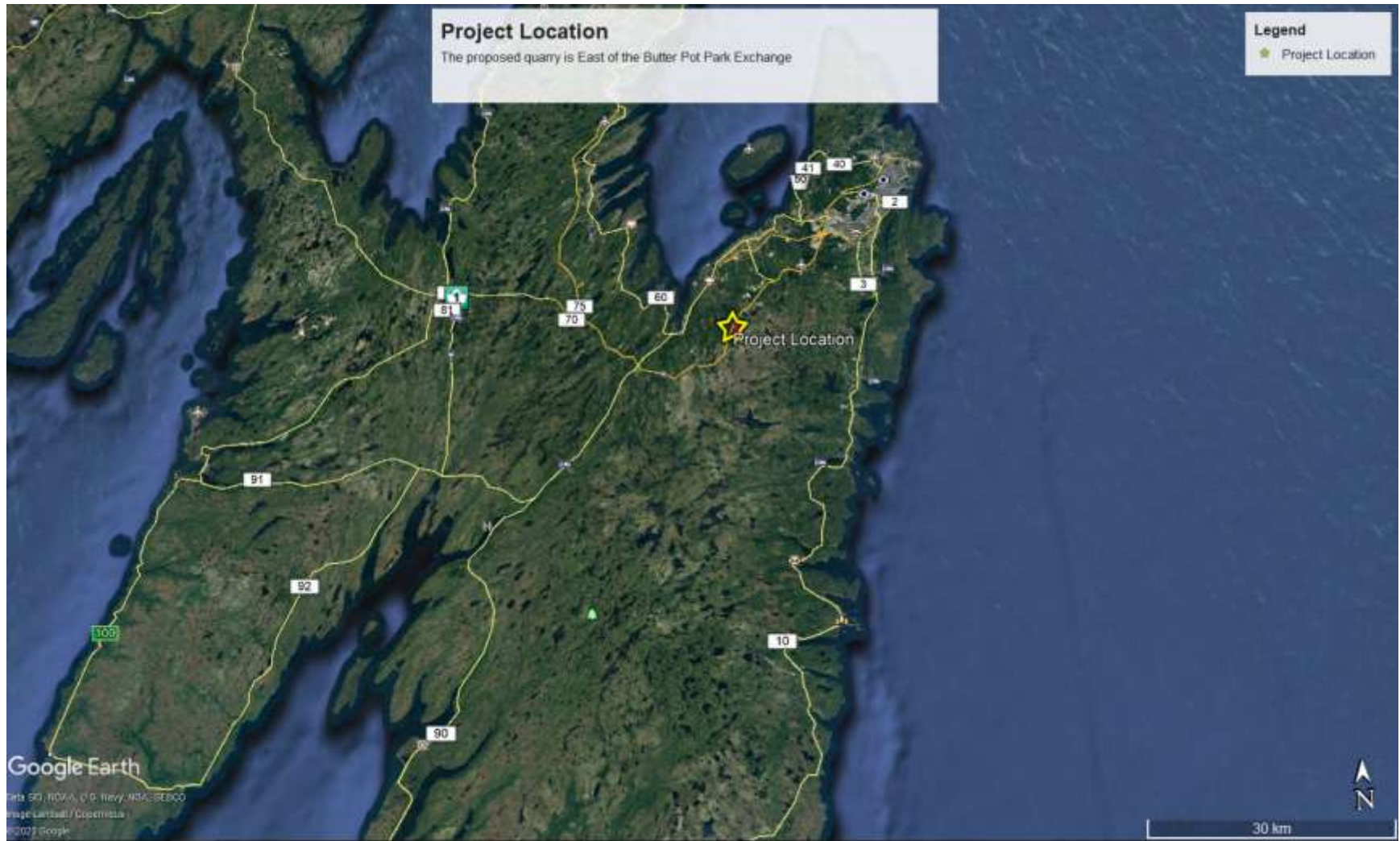


Figure 1: Location of the project in Newfoundland

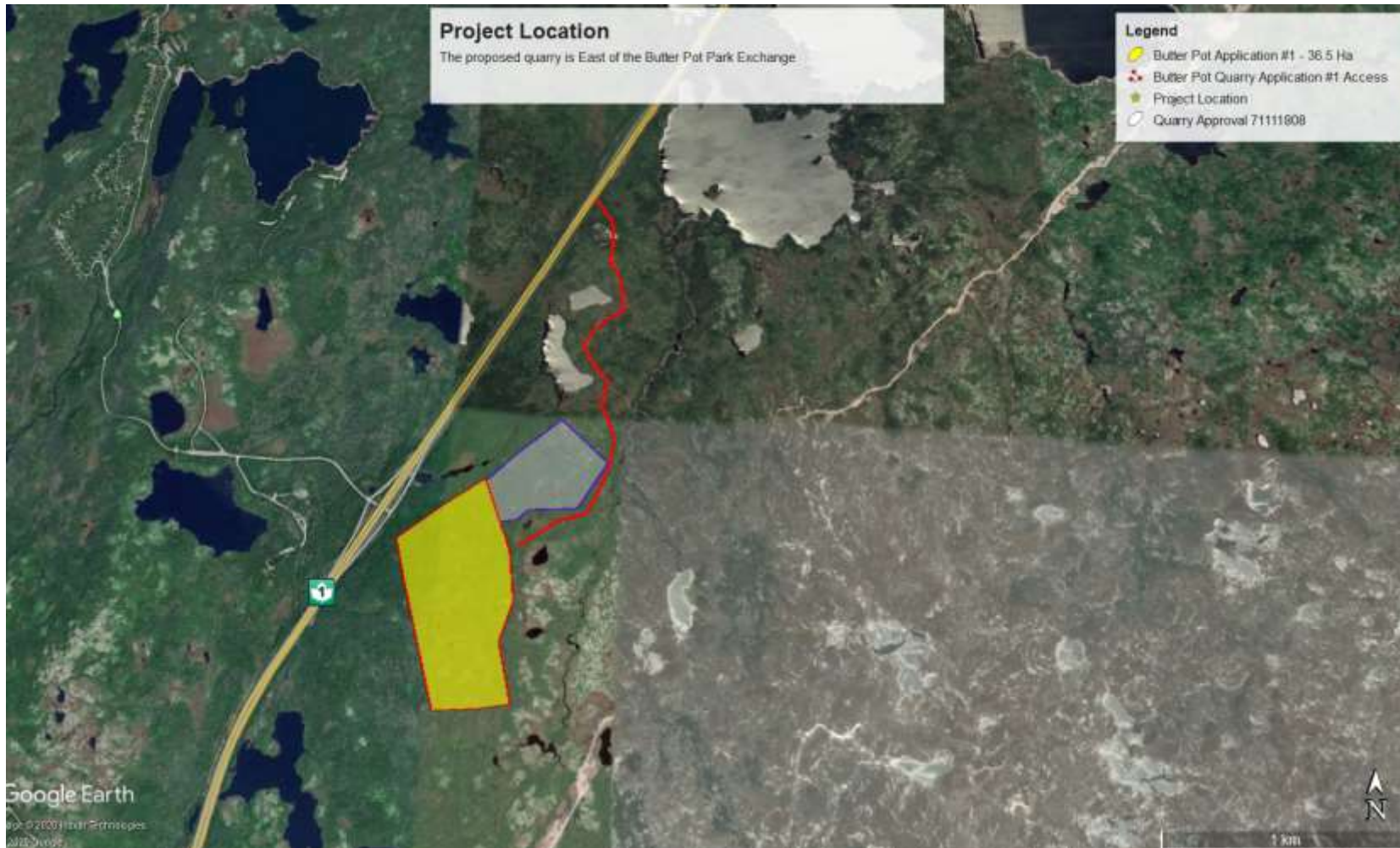


Figure 2: Overview of the Project Location



Figure 3: Capture of the Land use surround the potential quarry. The pink circles indicate Quarry approvals (Current and historical) in the area