

AUTHOR: K. Rozalska	PROJECT NO.: 121411777
APPROVED BY: S. Salley	SCALE: 1:10,000 <small>when printed at 11x17 inches</small>
CLIENT: Department of Environment and Conservation, Newfoundland and Labrador	DATA SOURCES: Natural Resources Canada Bathymetry provided by NATECH

**Marine Currents: Ebbing Spring Tide (LT - 2.5hrs)**

**Marine Study**

Hopedale Harbour, NL

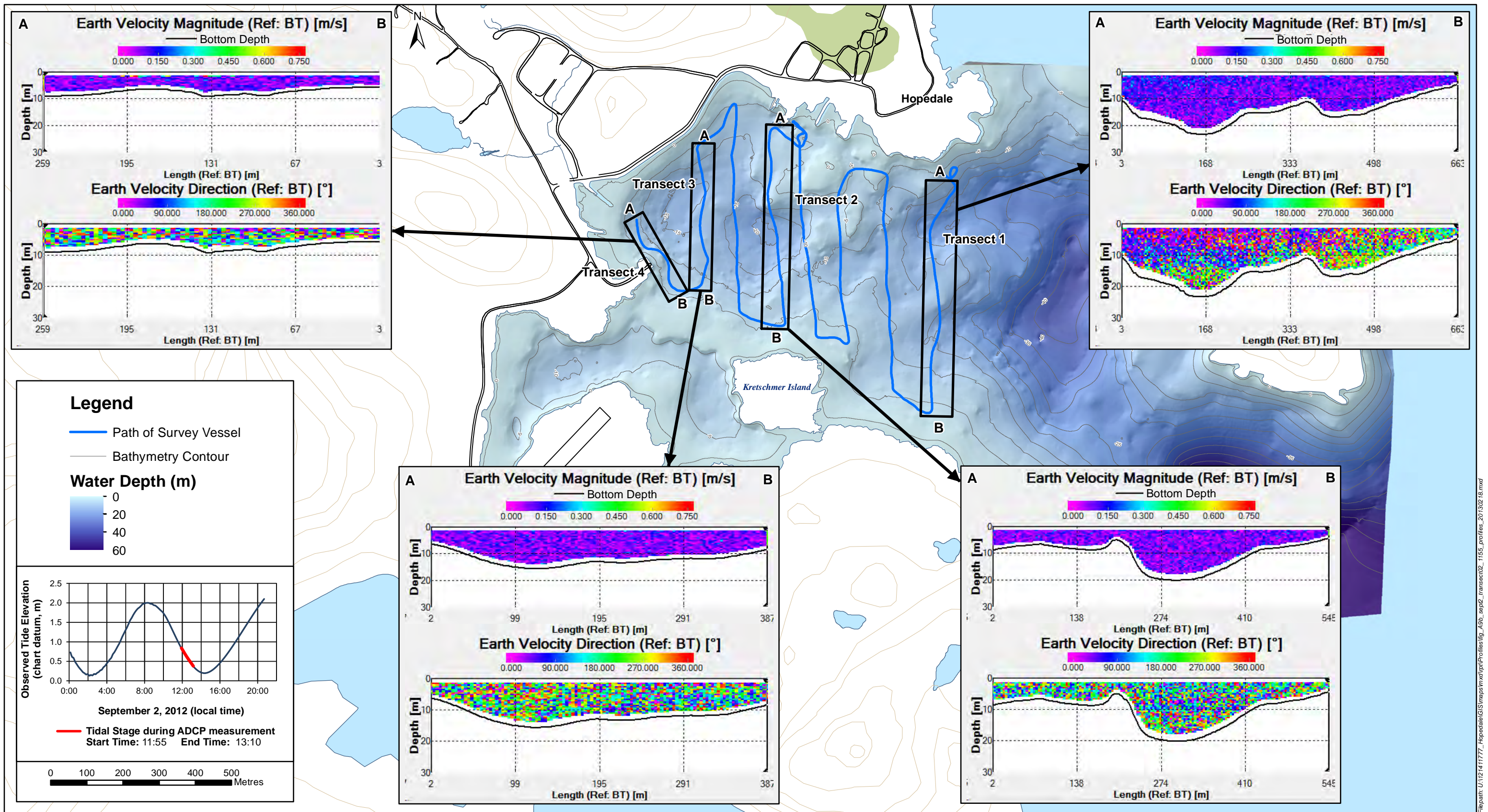
FIGURE NO.: **A.9.a**

DATE:  
21/02/2013  
(dd/mm/yyyy)



Filepath: U:\12141177\_Hopedale GIS\maps\mxd\p1\2D\_vectors\fig\_A9a\_sept2\_transect02\_1155\_20130220.mxd





AUTHOR: K. Rozalska	PROJECT NO.: 121411777
APPROVED BY: S. Salley	SCALE: 1:10,000 <small>when printed at 11x17 inches</small>
CLIENT: Department of Environment and Conservation, Newfoundland and Labrador	DATA SOURCES: Natural Resources Canada Bathymetry provided by NATECH

**Profile of Marine Currents: Ebbing Spring Tide (LT - 2.5hrs)**

Marine Study  
Hopedale Harbour, NL

FIGURE NO.:	<b>A.9.b</b>
DATE: (dd/mm/yyyy)	18/02/2013

Filepath: U:\1121411777\_Hopedale\GIS\maps\map\Profiles\fig\_A9b\_sep2\_transect02\_1155\_profiles\_20130218.mxd