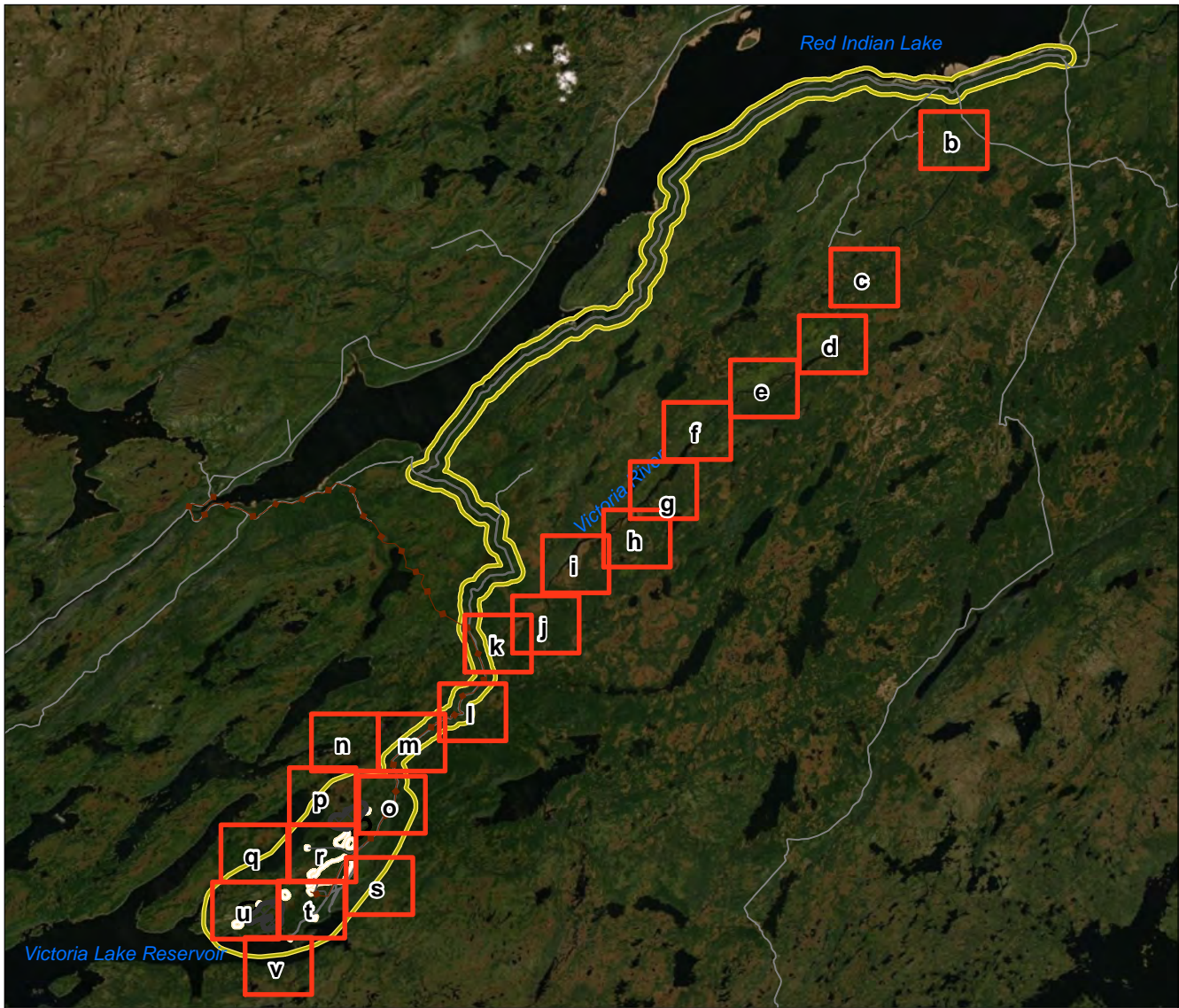


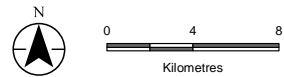
August 2021

APPENDIX J ECCC-08 MAPBOOK





- Map Index
- Local Assessment Area
- Mine Features**
- Access Road
- Site Road
- Power Line
- Open Pit
- Waste Rock Pile
- Other Mine Infrastructure
- Other Features**
- Resource / Recreation Road



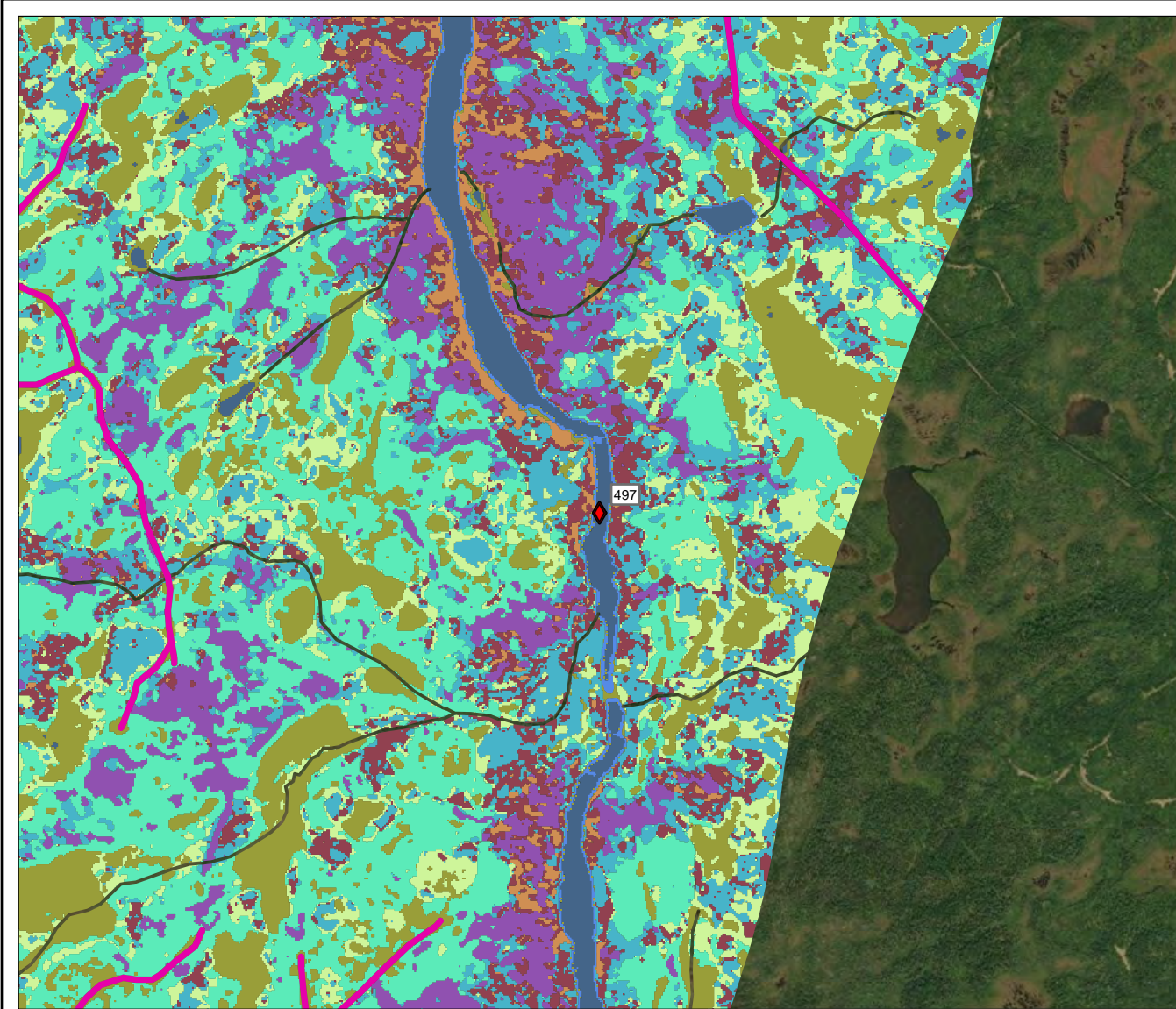
Project Location Valentine Lake
 Central Newfoundland, CA

Client/Project 121416408_IR50_ECCC08.2
 Marathon Gold Corporation
 Valentine Gold Project
 Environmental Impact Statement

Service Layer Credits: Source: Esri, Maxar, GeoEye, Earthstar Geographics, CNES/Airbus DS, USDA, USGS, AeroGRID, IGN, and the GIS User Community

Figure ECCC08.2a

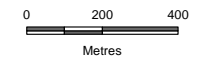
Disclaimer: This document has been prepared based on information provided by others as cited in the Notes section. Stantec has not verified the accuracy and/or completeness of this information and shall not be responsible for any errors or omissions which may be incorporated herein as a result. Stantec assumes no responsibility for data supplied in electronic format, and the recipient accepts full responsibility for verifying the accuracy and completeness of the data.



◆ 2011 Summer Brood Waterfowl Observation

ELC

- ◆ Anthropogenic
- Shrub Fen/Shrub Bog
- Open Water
- Black Spruce Forest
- Balsam Fir Forest
- Alder Thicket
- Kalmia-Black Spruce Forest
- Mixedwood Forest
- Regenerating Forest
- Riparian Transition



Project Location
Valentine Lake
Central Newfoundland, CA

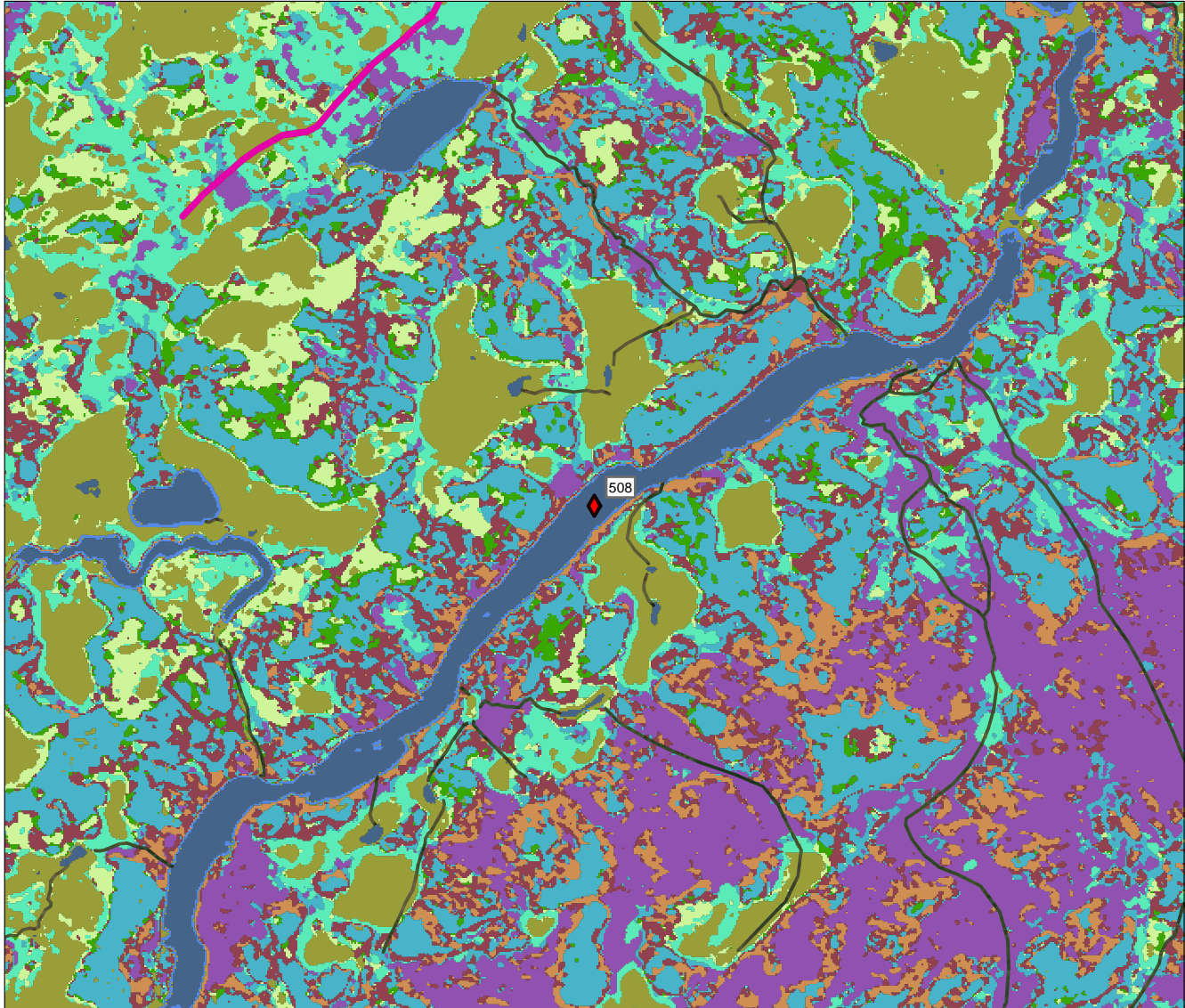
Figure ECCC08.2b

Client/Project
Marathon Gold Corporation
Valentine Gold Project
Environmental Impact Statement

121416408_IR50_ECCCC08.2

Service Layer Credits: Source: Esri, Maxar, GeoEye, Earthstar Geographics, CNES/Airbus DS, USDA, USGS, AeroGRID, IGN, and the GIS User Community

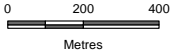
Disclaimer: This document has been prepared based on information provided by others as cited in the Notes section. Stantec has not verified the accuracy and/or completeness of this information and shall not be responsible for any errors or omissions which may be incorporated herein as a result. Stantec assumes no responsibility for data supplied in electronic format, and the recipient accepts full responsibility for verifying the accuracy and completeness of the data.



◆ 2011 Summer Brood Waterfowl Observation

ELC

- Anthropogenic
- Shrub Fen/Shrub Bog
- Open Water
- Black Spruce Forest
- Balsam Fir Forest
- Alder Thicket
- Kalmia-Black Spruce Forest
- Mixedwood Forest
- Regenerating Forest
- Riparian Transition
- Wet Coniferous Forest



Project Location
Valentine Lake
Central Newfoundland, CA

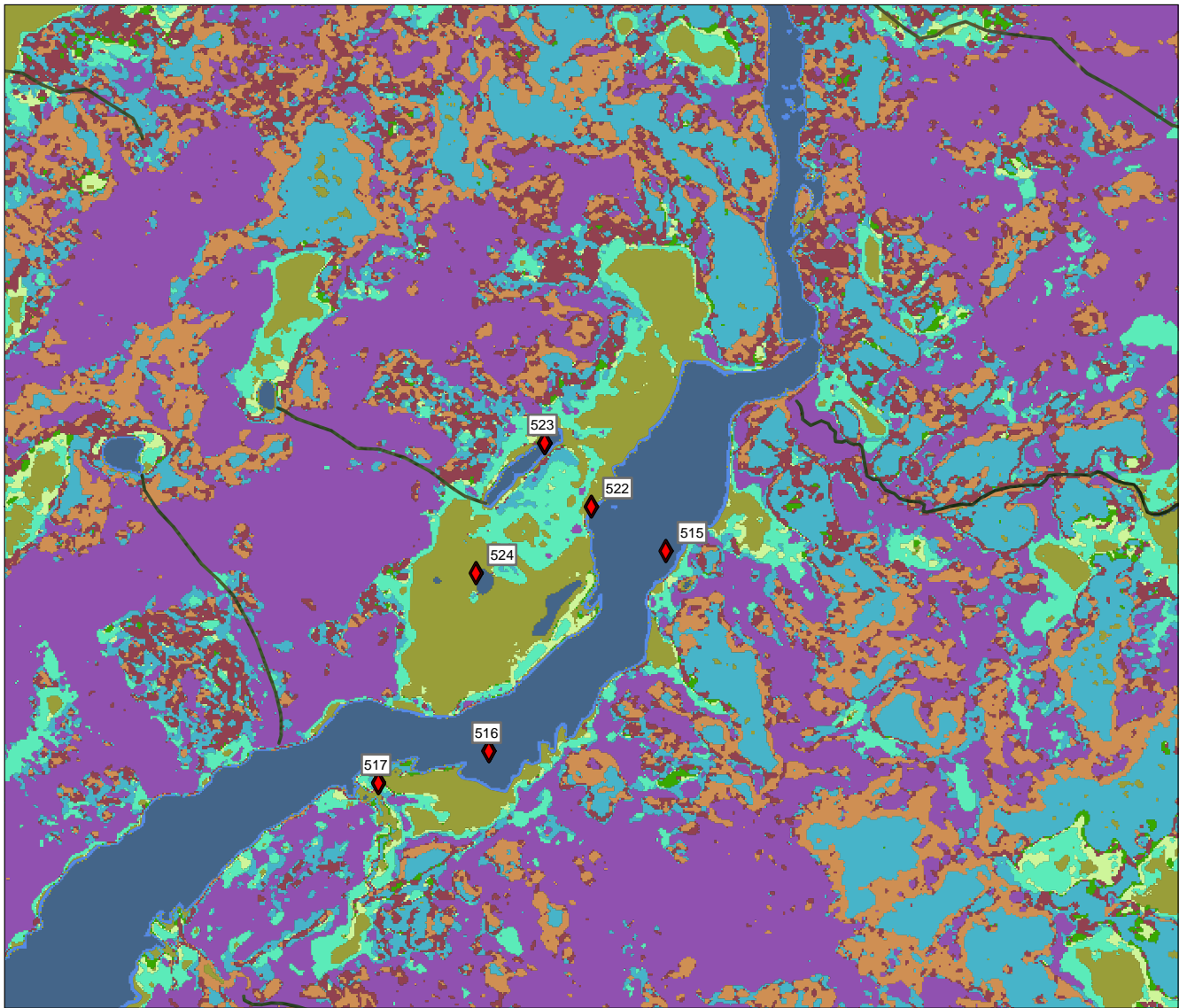
Figure ECCC08.2c

Client/Project
Marathon Gold Corporation
Valentine Gold Project
Environmental Impact Statement

121416408_IR50_ECCCC08.2

Service Layer Credits: Source: Esri, Maxar, GeoEye, Earthstar Geographics, CNES/Airbus DS, USDA, USGS, AeroGRID, IGN, and the GIS User Community

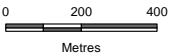
Disclaimer: This document has been prepared based on information provided by others as cited in the Notes section. Stantec has not verified the accuracy and/or completeness of this information and shall not be responsible for any errors or omissions which may be incorporated herein as a result. Stantec assumes no responsibility for data supplied in electronic format, and the recipient accepts full responsibility for verifying the accuracy and completeness of the data.



◆ 2011 Summer Brood Waterfowl Observation

ELC

- Shrub Fen/Shrub Bog
- Open Water
- Black Spruce Forest
- Balsam Fir Forest
- Alder Thicket
- Kalmia-Black Spruce Forest
- Mixedwood Forest
- Regenerating Forest
- Riparian Transition
- Wet Coniferous Forest



Project Location
Valentine Lake
Central Newfoundland, CA

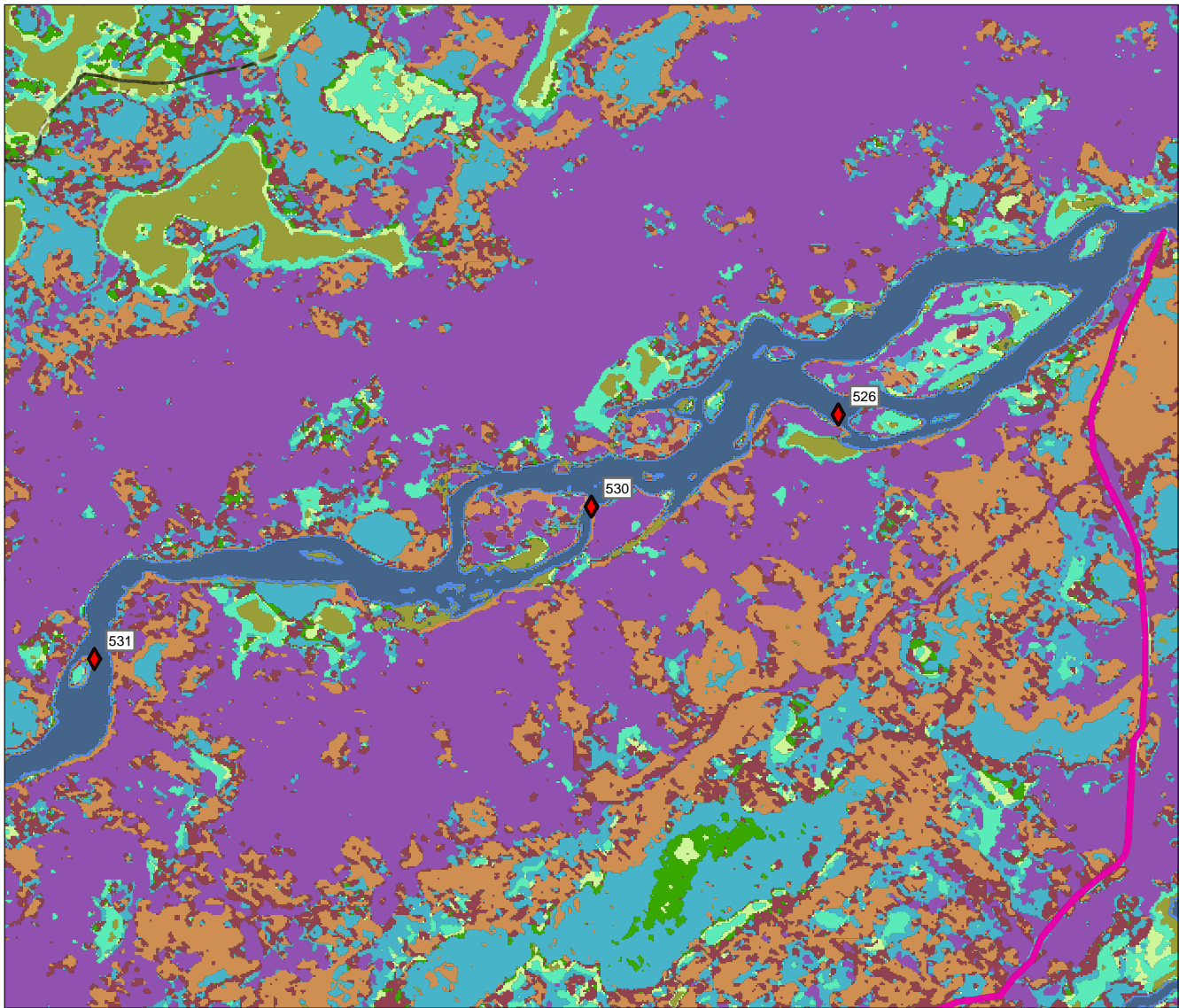
Figure ECCC08.2d

Client/Project
Marathon Gold Corporation
Valentine Gold Project
Environmental Impact Statement

121416408_IR50_ECCCC08.2

Service Layer Credits: Source: Esri, Maxar, GeoEye, Earthstar Geographics, CNES/Airbus DS, USDA, USGS, AeroGRID, IGN, and the GIS User Community

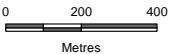
Disclaimer: This document has been prepared based on information provided by others as cited in the Notes section. Stantec has not verified the accuracy and/or completeness of this information and shall not be responsible for any errors or omissions which may be incorporated herein as a result. Stantec assumes no responsibility for data supplied in electronic format, and the recipient accepts full responsibility for verifying the accuracy and completeness of the data.



◆ 2011 Summer Brood Waterfowl Observation

ELC

- ◆ Anthropogenic
- ◆ Shrub Fen/Shrub Bog
- ◆ Open Water
- ◆ Black Spruce Forest
- ◆ Balsam Fir Forest
- ◆ Alder Thicket
- ◆ Kalmia-Black Spruce Forest
- ◆ Mixedwood Forest
- ◆ Regenerating Forest
- ◆ Riparian Transition
- ◆ Wet Coniferous Forest



Project Location
Valentine Lake
Central Newfoundland, CA

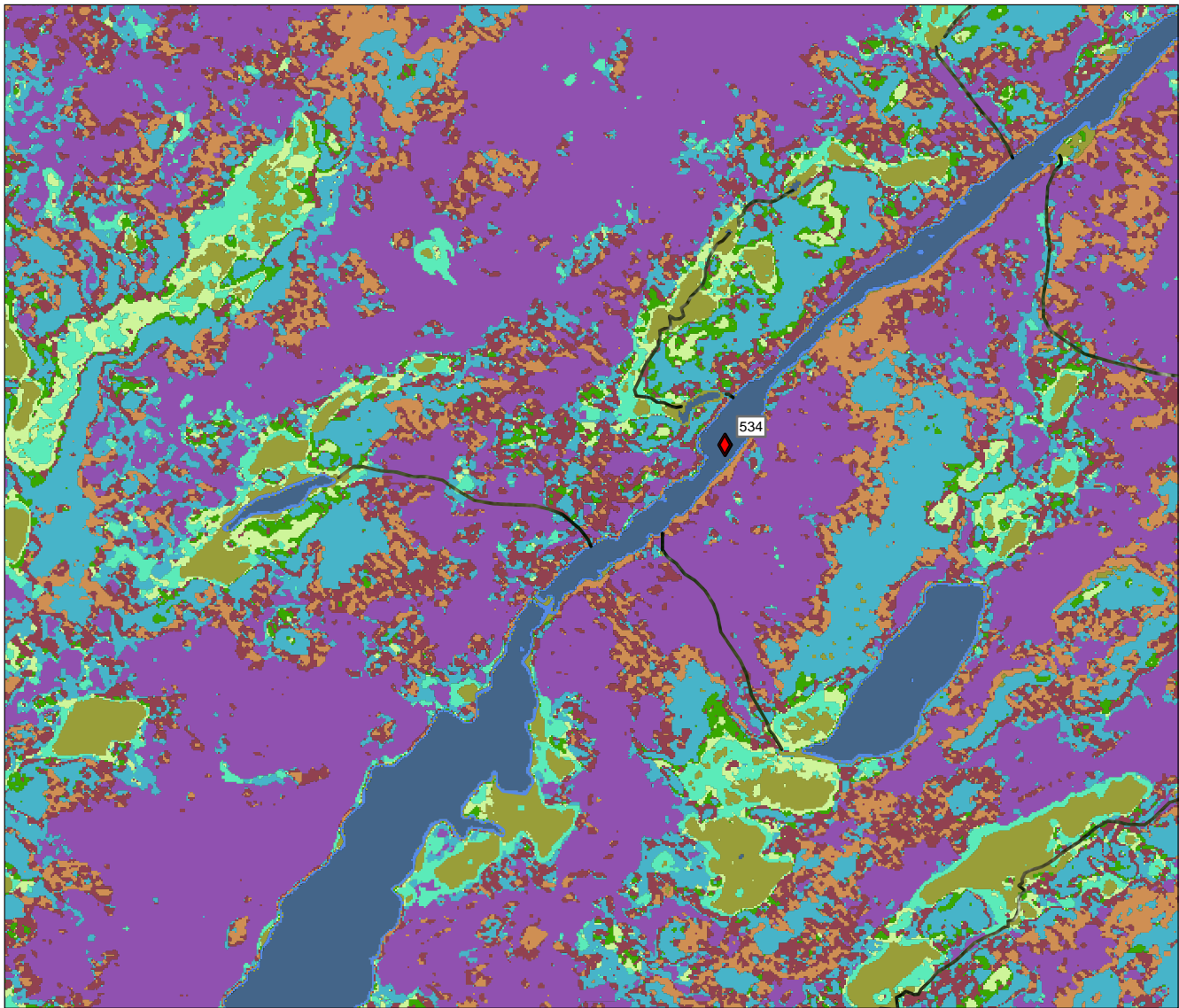
Figure ECCC08.2e

Client/Project
Marathon Gold Corporation
Valentine Gold Project
Environmental Impact Statement

121416408_IR50_ECCCC08.2

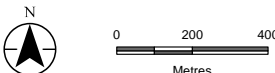
Service Layer Credits: Source: Esri, Maxar, GeoEye, Earthstar Geographics, CNES/Airbus DS, USDA, USGS, AeroGRID, IGN, and the GIS User Community

Disclaimer: This document has been prepared based on information provided by others as cited in the Notes section. Stantec has not verified the accuracy and/or completeness of this information and shall not be responsible for any errors or omissions which may be incorporated herein as a result. Stantec assumes no responsibility for data supplied in electronic format, and the recipient accepts full responsibility for verifying the accuracy and completeness of the data.



◆ 2011 Summer Brood Waterfowl Observation

- ELC**
- Shrub Fen/Shrub Bog
 - Open Water
 - Black Spruce Forest
 - Balsam Fir Forest
 - Alder Thicket
 - Kalmia-Black Spruce Forest
 - Mixedwood Forest
 - Regenerating Forest
 - Riparian Transition
 - Wet Coniferous Forest



Project Location
Valentine Lake
Central Newfoundland, CA

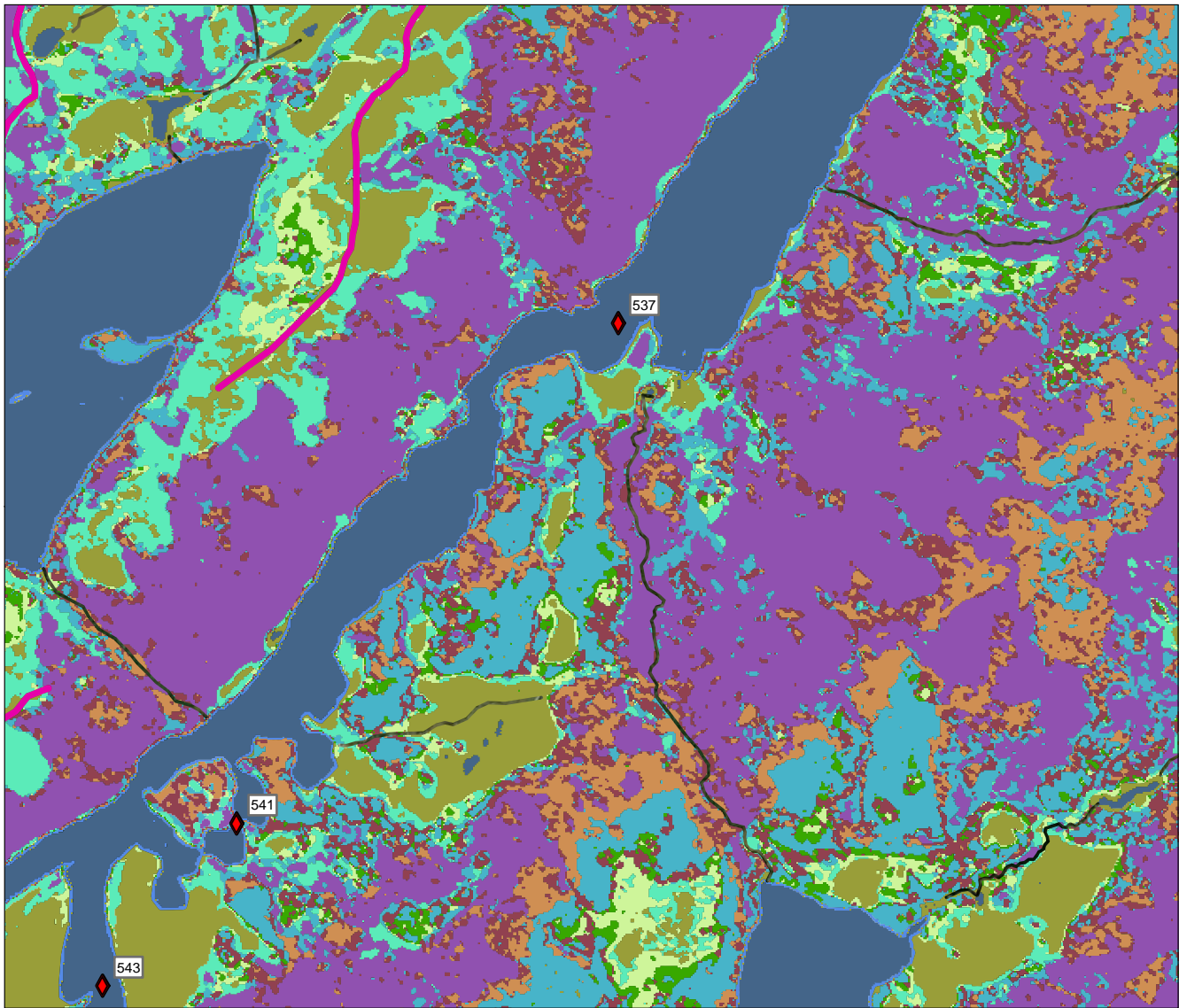
Figure ECCC08.2f

Client/Project
Marathon Gold Corporation
Valentine Gold Project
Environmental Impact Statement

121416408_IR50_ECCCC08.2

Disclaimer: This document has been prepared based on information provided by others as cited in the Notes section. Stantec has not verified the accuracy and/or completeness of this information and shall not be responsible for any errors or omissions which may be incorporated herein as a result. Stantec assumes no responsibility for data supplied in electronic format, and the recipient accepts full responsibility for verifying the accuracy and completeness of the data.

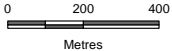
Service Layer Credits: Source: Esri, Maxar, GeoEye, Earthstar Geographics, CNES/Airbus DS, USDA, USGS, AeroGRID, IGN, and the GIS User Community



◆ 2011 Summer Brood Waterfowl Observation

ELC

- ◆ Anthropogenic
- ◆ Shrub Fen/Shrub Bog
- ◆ Open Water
- ◆ Black Spruce Forest
- ◆ Balsam Fir Forest
- ◆ Alder Thicket
- ◆ Kalmia-Black Spruce Forest
- ◆ Mixedwood Forest
- ◆ Regenerating Forest
- ◆ Riparian Transition
- ◆ Wet Coniferous Forest



Project Location
Valentine Lake
Central Newfoundland, CA

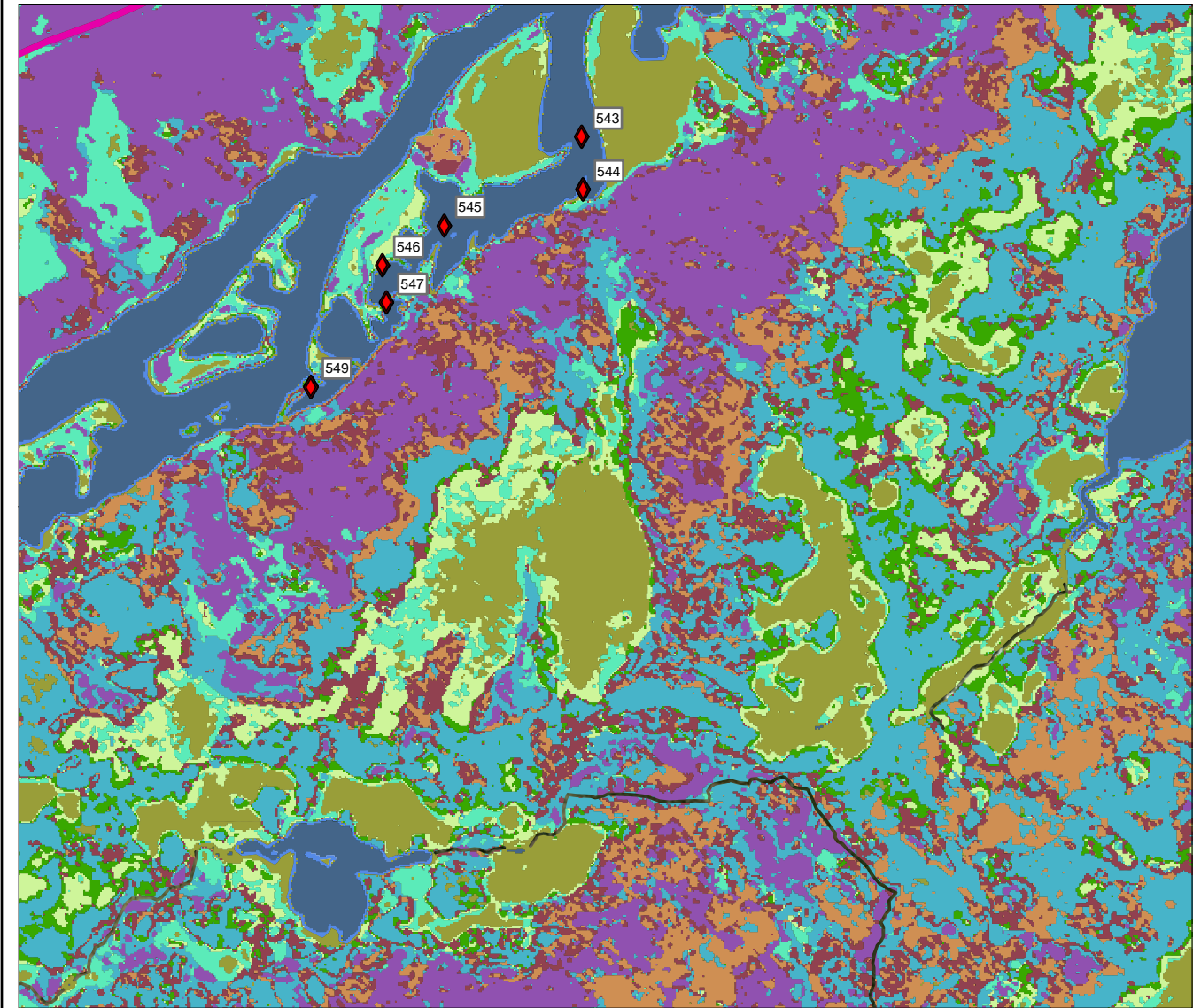
Figure ECCC08.2g

Client/Project
Marathon Gold Corporation
Valentine Gold Project
Environmental Impact Statement

121416408_IR50_ECCCC08.2

Service Layer Credits: Source: Esri, Maxar, GeoEye, Earthstar Geographics, CNES/Airbus DS, USDA, USGS, AeroGRID, IGN, and the GIS User Community

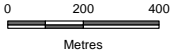
Disclaimer: This document has been prepared based on information provided by others as cited in the Notes section. Stantec has not verified the accuracy and/or completeness of this information and shall not be responsible for any errors or omissions which may be incorporated herein as a result. Stantec assumes no responsibility for data supplied in electronic format, and the recipient accepts full responsibility for verifying the accuracy and completeness of the data.



◆ 2011 Summer Brood Waterfowl Observation

ELC

- ◆ Anthropogenic
- ◆ Shrub Fen/Shrub Bog
- ◆ Open Water
- ◆ Black Spruce Forest
- ◆ Balsam Fir Forest
- ◆ Alder Thicket
- ◆ Kalmia-Black Spruce Forest
- ◆ Mixedwood Forest
- ◆ Regenerating Forest
- ◆ Riparian Transition
- ◆ Wet Coniferous Forest



Project Location
Valentine Lake
Central Newfoundland, CA

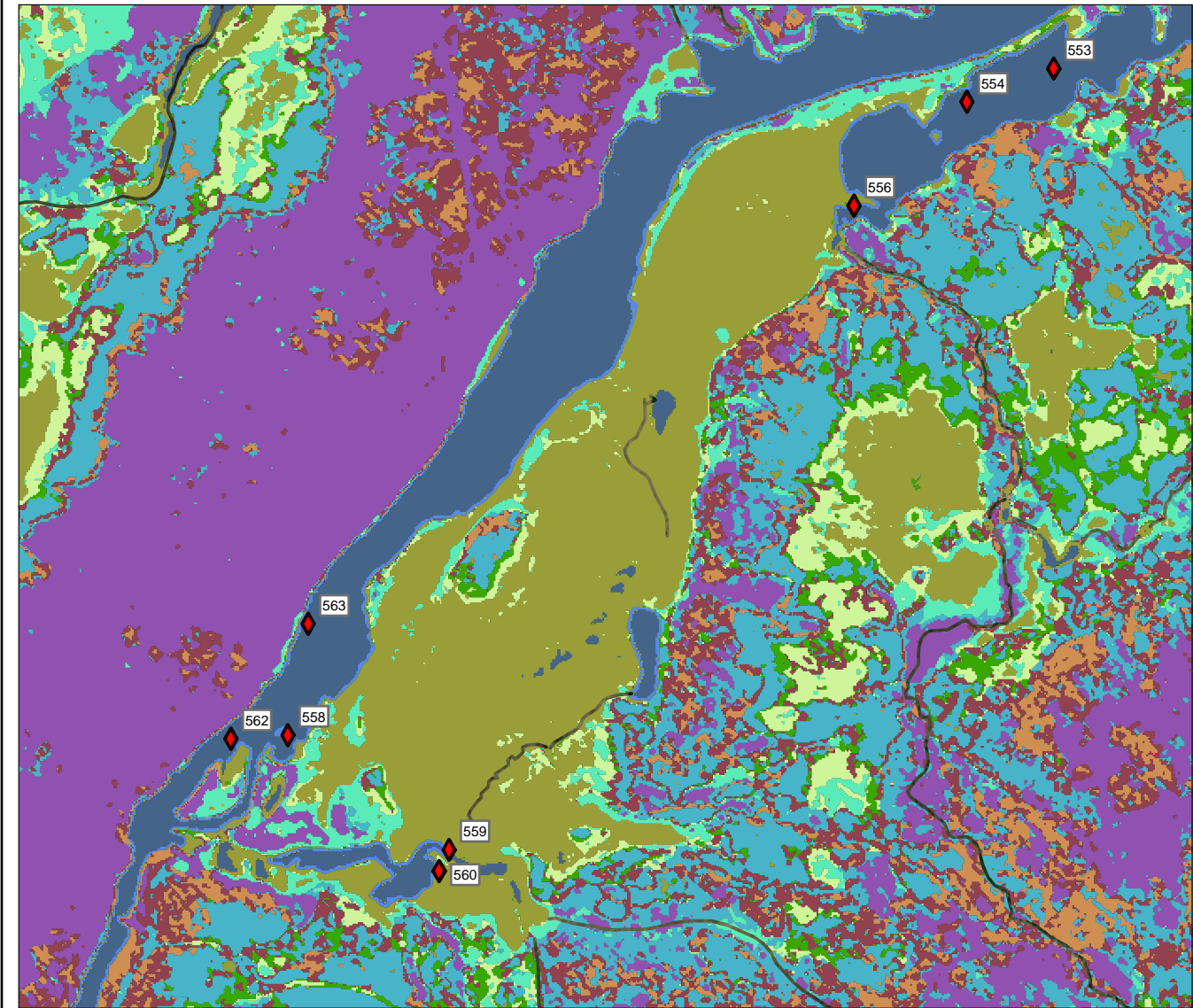
Figure ECCC08.2h

Client/Project
Marathon Gold Corporation
Valentine Gold Project
Environmental Impact Statement

121416408_IR50_ECCCC08.2

Service Layer Credits: Source: Esri, Maxar, GeoEye, Earthstar Geographics, CNES/Airbus DS, USDA, USGS, AeroGRID, IGN, and the GIS User Community

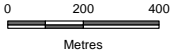
Disclaimer: This document has been prepared based on information provided by others as cited in the Notes section. Stantec has not verified the accuracy and/or completeness of this information and shall not be responsible for any errors or omissions which may be incorporated herein as a result. Stantec assumes no responsibility for data supplied in electronic format, and the recipient accepts full responsibility for verifying the accuracy and completeness of the data.



◆ 2011 Summer Brood Waterfowl Observation

ELC

- Shrub Fen/Shrub Bog
- Open Water
- Black Spruce Forest
- Balsam Fir Forest
- Alder Thicket
- Kalmia-Black Spruce Forest
- Mixedwood Forest
- Regenerating Forest
- Riparian Transition
- Wet Coniferous Forest



Project Location
Valentine Lake
Central Newfoundland, CA

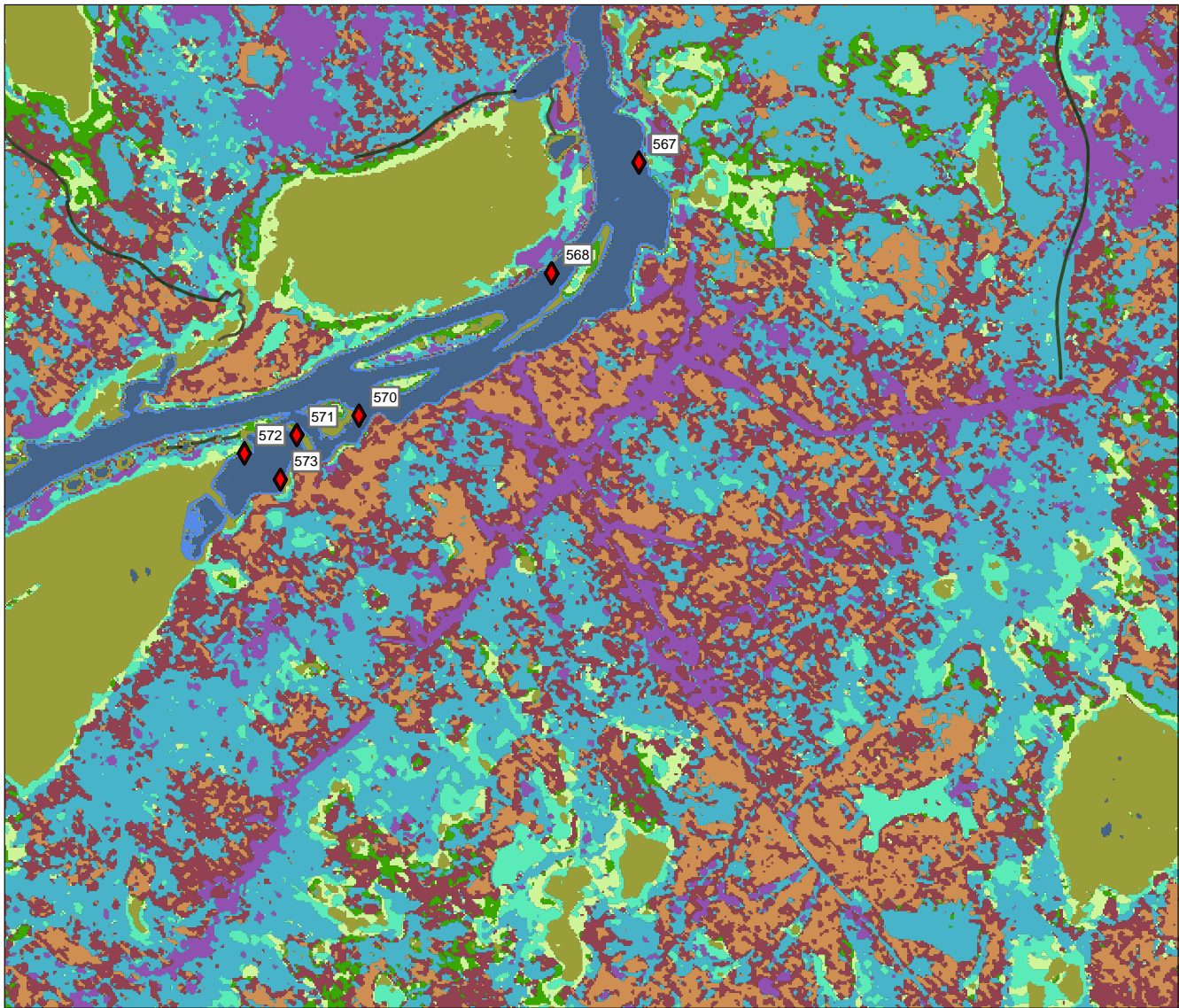
Figure ECCC08.2i

Client/Project
Marathon Gold Corporation
Valentine Gold Project
Environmental Impact Statement

121416408_IR50_ECCC08.2

Service Layer Credits: Source: Esri, Maxar, GeoEye, Earthstar Geographics, CNES/Airbus DS, USDA, USGS, AeroGRID, IGN, and the GIS User Community

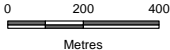
Disclaimer: This document has been prepared based on information provided by others as cited in the Notes section. Stantec has not verified the accuracy and/or completeness of this information and shall not be responsible for any errors or omissions which may be incorporated herein as a result. Stantec assumes no responsibility for data supplied in electronic format, and the recipient accepts full responsibility for verifying the accuracy and completeness of the data.



◆ 2011 Summer Brood Waterfowl Observation

ELC

- Shrub Fen/Shrub Bog
- Open Water
- Black Spruce Forest
- Balsam Fir Forest
- Alder Thicket
- Kalmia-Black Spruce Forest
- Mixedwood Forest
- Regenerating Forest
- Riparian Transition
- Wet Coniferous Forest



Project Location
Valentine Lake
Central Newfoundland, CA

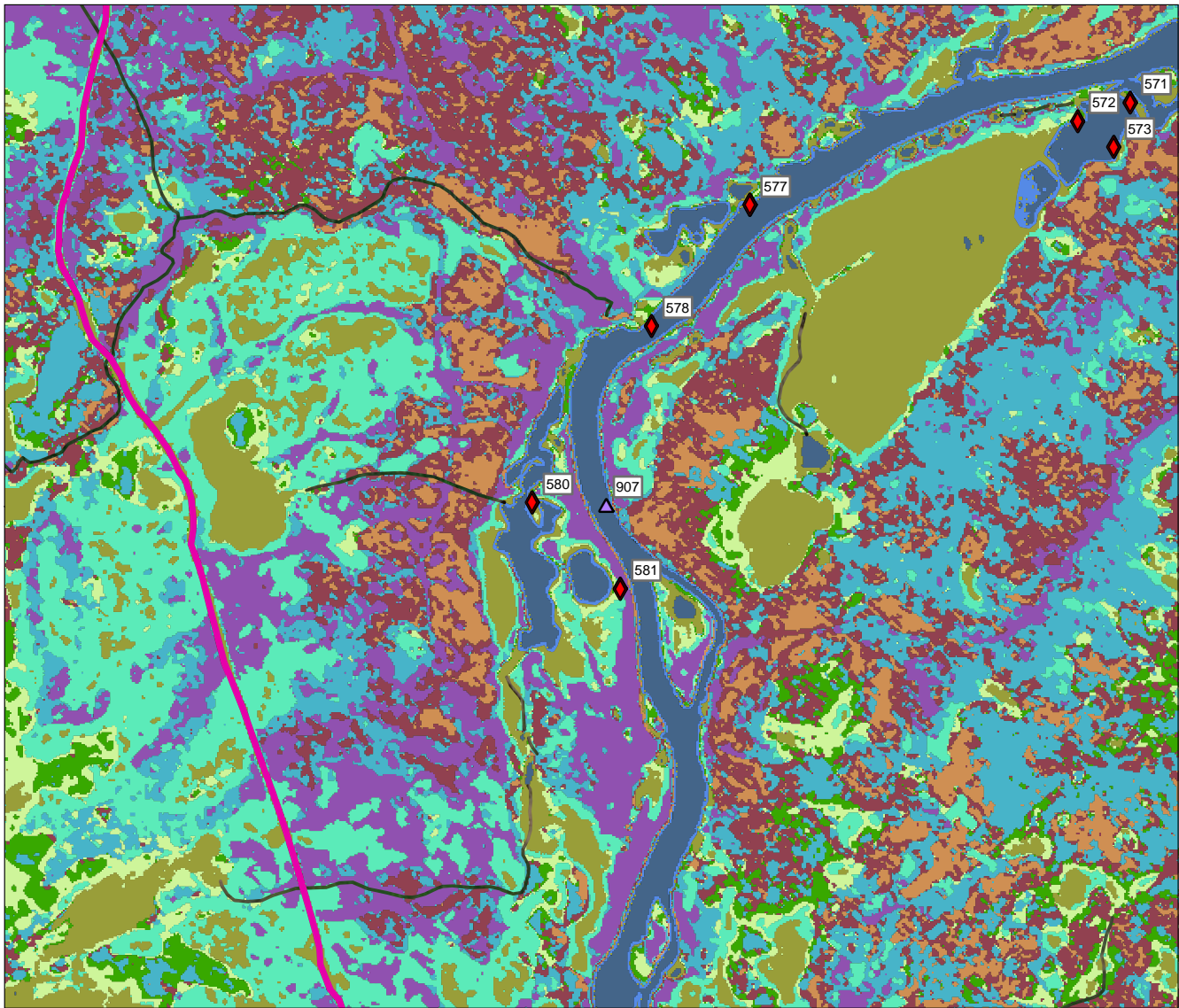
Figure ECCC08.2j

Client/Project
Marathon Gold Corporation
Valentine Gold Project
Environmental Impact Statement

121416408_IR50_ECCCC08.2

Service Layer Credits: Source: Esri, Maxar, GeoEye, Earthstar Geographics, CNES/Airbus DS, USDA, USGS, AeroGRID, IGN, and the GIS User Community

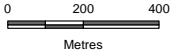
Disclaimer: This document has been prepared based on information provided by others as cited in the Notes section. Stantec has not verified the accuracy and/or completeness of this information and shall not be responsible for any errors or omissions which may be incorporated herein as a result. Stantec assumes no responsibility for data supplied in electronic format, and the recipient accepts full responsibility for verifying the accuracy and completeness of the data.



- ◆ 2011 Summer Brood Waterfowl Observation
- △ 2017 Fall Staging Waterfowl Observation

ELC

- Anthropogenic
- Shrub Fen/Shrub Bog
- Open Water
- Black Spruce Forest
- Balsam Fir Forest
- Alder Thicket
- Kalmia-Black Spruce Forest
- Mixedwood Forest
- Regenerating Forest
- Riparian Transition
- Wet Coniferous Forest



Project Location
Valentine Lake
Central Newfoundland, CA

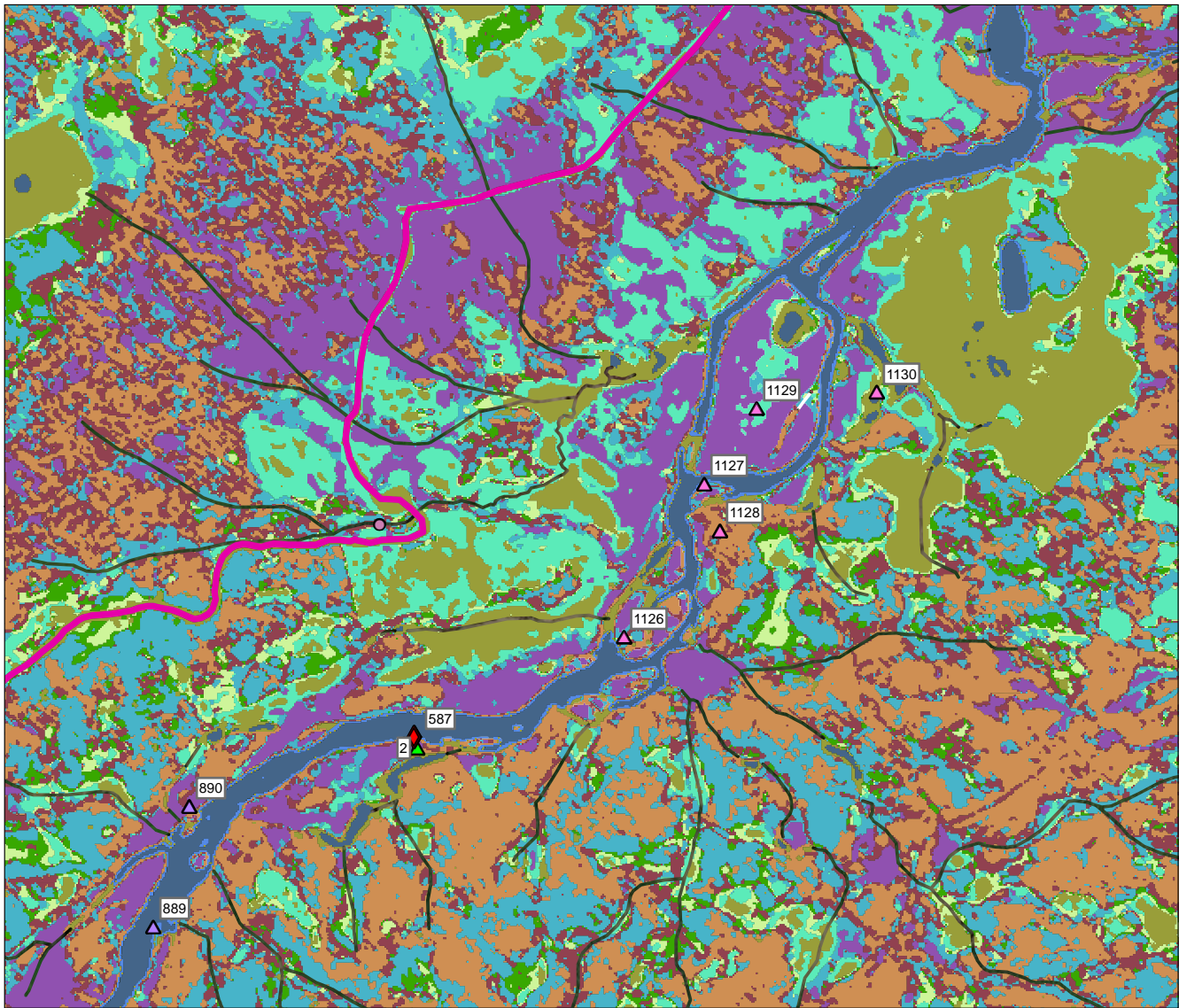
Figure ECCC08.2k

Client/Project
Marathon Gold Corporation
Valentine Gold Project
Environmental Impact Statement

121416408_IR50_ECCCC08.2

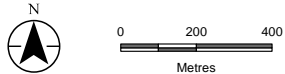
Service Layer Credits: Source: Esri, Maxar, GeoEye, Earthstar Geographics, CNES/Airbus DS, USDA, USGS, AeroGRID, IGN, and the GIS User Community

Disclaimer: This document has been prepared based on information provided by others as cited in the Notes section. Stantec has not verified the accuracy and/or completeness of this information and shall not be responsible for any errors or omissions which may be incorporated herein as a result. Stantec assumes no responsibility for data supplied in electronic format, and the recipient accepts full responsibility for verifying the accuracy and completeness of the data.



- ◆ 2011 Summer Brood Waterfowl Observation
- ▲ 2017 Spring Breeding Waterfowl Observation
- ▲ 2011 Spring Breeding Waterfowl Observation
- ▲ 2017 Fall Staging Waterfowl Observation

- ELC**
- █ Anthropogenic
 - █ Shrub Fen/Shrub Bog
 - █ Open Water
 - █ Black Spruce Forest
 - █ Balsam Fir Forest
 - █ Alder Thicket
 - █ Kalmia-Black Spruce Forest
 - █ Mixedwood Forest
 - █ Regenerating Forest
 - █ Riparian Transition
 - █ Wet Coniferous Forest



Project Location
Valentine Lake
Central Newfoundland, CA

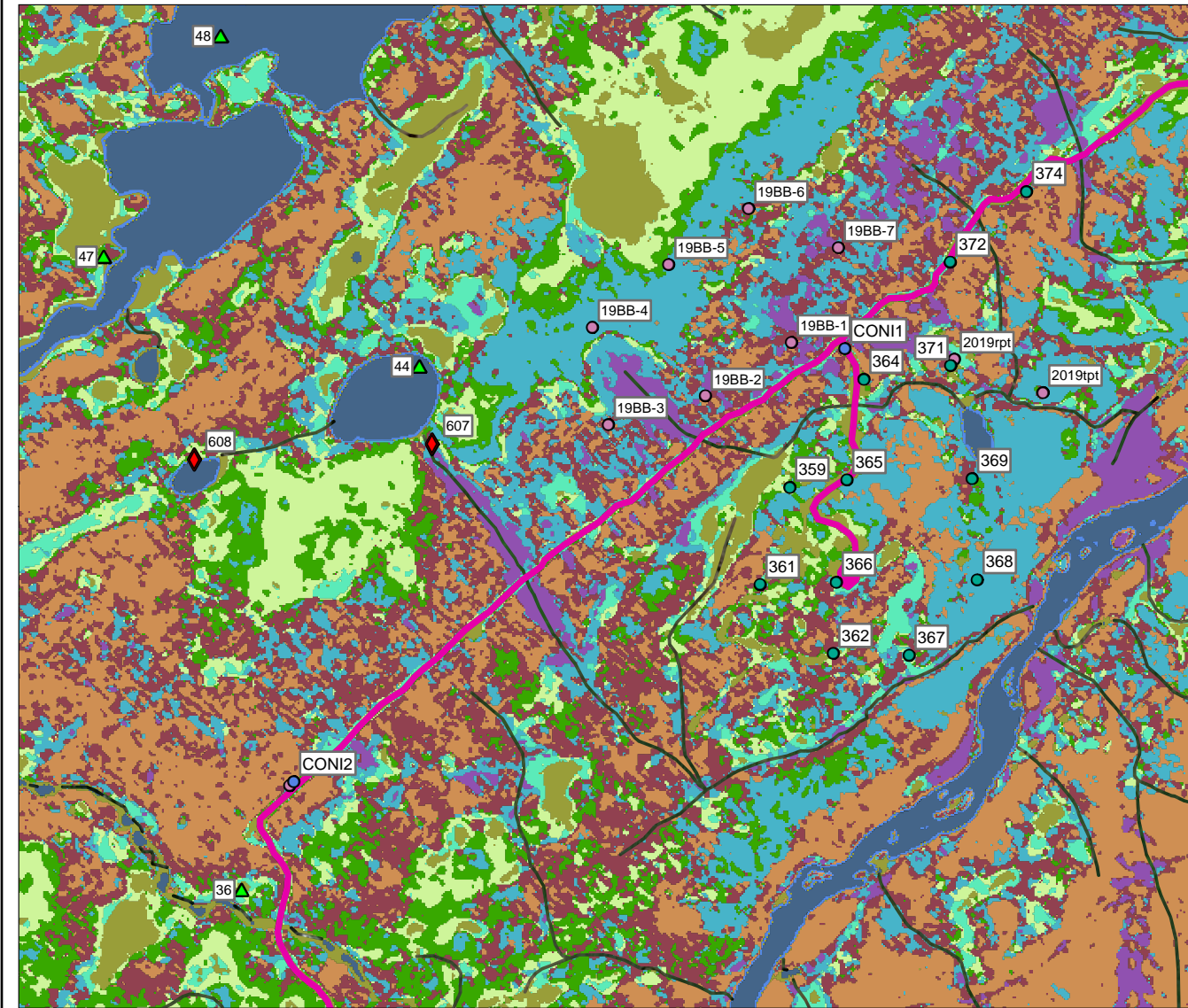
Figure ECC08.21

Client/Project
Marathon Gold Corporation
Valentine Gold Project
Environmental Impact Statement

121416408_IR50_ECC08.21

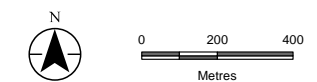
Service Layer Credits: Source: Esri, Maxar, GeoEye, Earthstar Geographics, CNES/Airbus DS, USDA, USGS, AeroGRID, IGN, and the GIS User Community

Disclaimer: This document has been prepared based on information provided by others as cited in the Notes section. Stantec has not verified the accuracy and/or completeness of this information and shall not be responsible for any errors or omissions which may be incorporated herein as a result. Stantec assumes no responsibility for data supplied in electronic format, and the recipient accepts full responsibility for verifying the accuracy and completeness of the data.



- ◆ 2011 Summer Brood Waterfowl Observation
- ▲ 2011 Spring Breeding Waterfowl Observation
- 2019 Common Nighthawk Point Count Site
- 2011 Songbird Point Count Site
- 2019 Songbird Point Count Site

- ELC**
- █ Anthropogenic
 - █ Shrub Fen/Shrub Bog
 - █ Open Water
 - █ Black Spruce Forest
 - █ Balsam Fir Forest
 - █ Alder Thicket
 - █ Kalmia-Black Spruce Forest
 - █ Mixedwood Forest
 - █ Regenerating Forest
 - █ Riparian Transition
 - █ Wet Coniferous Forest



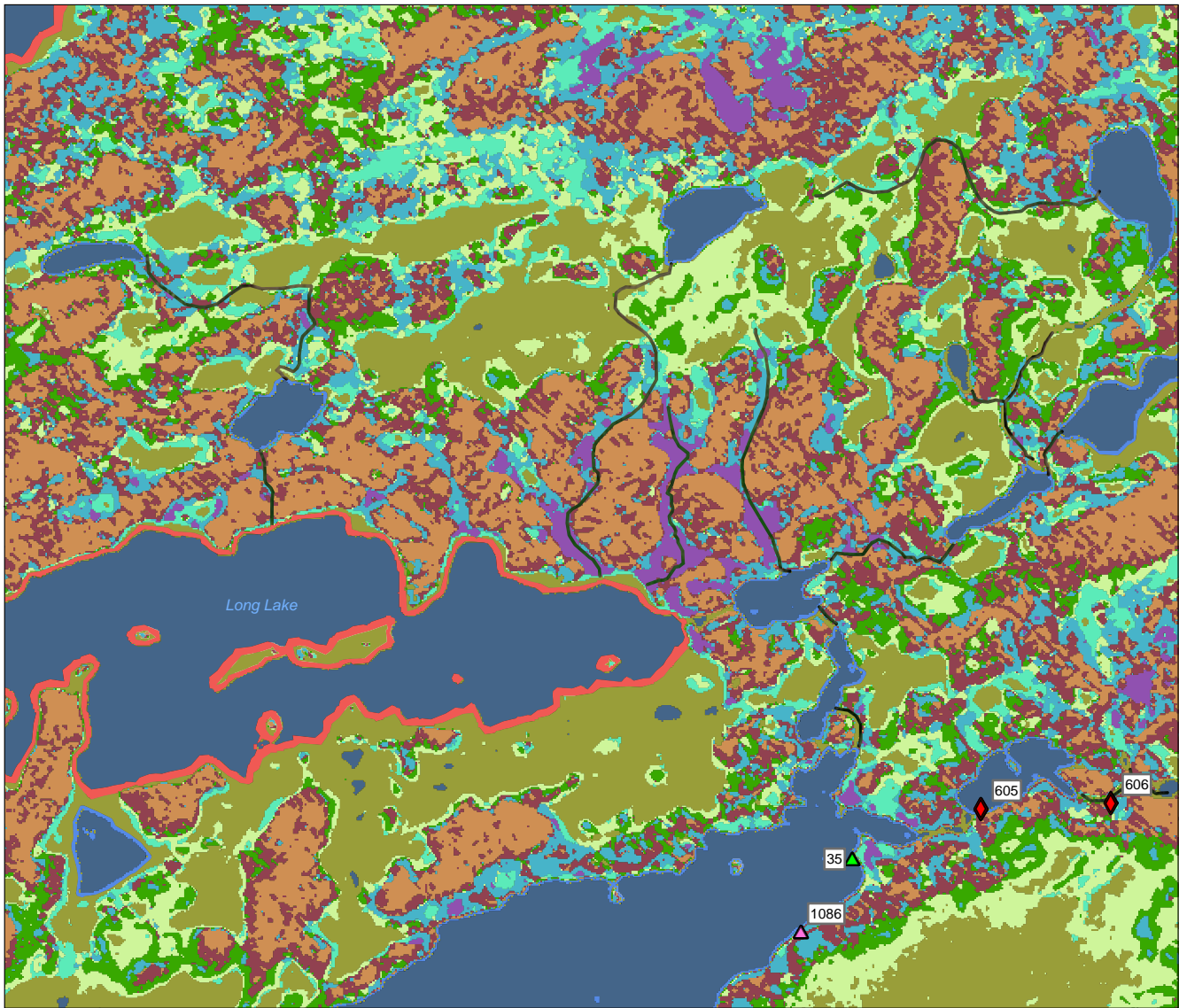
Project Location
Valentine Lake
Central Newfoundland, CA

Figure ECCC08.2m

Client/Project
Marathon Gold Corporation
Valentine Gold Project
Environmental Impact Statement

121416408_IR50_ECCC08.2

Disclaimer: This document has been prepared based on information provided by others as cited in the Notes section. Stantec has not verified the accuracy and/or completeness of this information and shall not be responsible for any errors or omissions which may be incorporated herein as a result. Stantec assumes no responsibility for data supplied in electronic format, and the recipient accepts full responsibility for verifying the accuracy and completeness of the data.



- ◆ 2011 Summer Brood Waterfowl Observation
- △ 2017 Spring Breeding Waterfowl Observation
- ▲ 2011 Spring Breeding Waterfowl Observation

- ELC**
- Sand Shoreline
 - Shrub Fen/Shrub Bog
 - Open Water
 - Black Spruce Forest
 - Balsam Fir Forest
 - Alder Thicket
 - Kalmia-Black Spruce Forest
 - Mixedwood Forest
 - Regenerating Forest
 - Riparian Transition
 - Wet Coniferous Forest

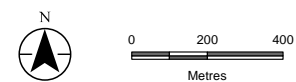
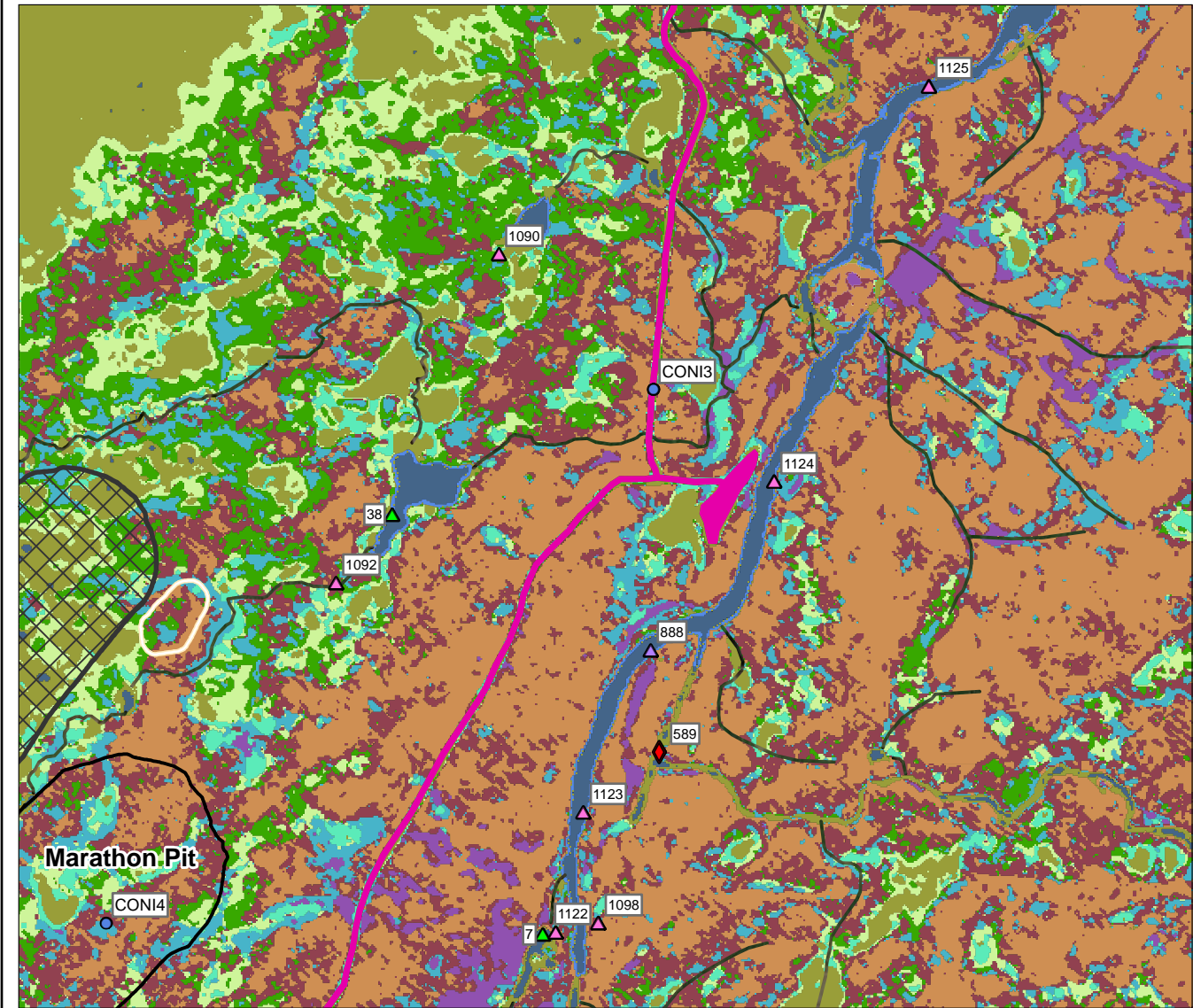


Figure ECCC08.2n

Project Location
Valentine Lake
Central Newfoundland, CA

Client/Project 121416408_IR50_ECCCC08.2
Marathon Gold Corporation
Valentine Gold Project
Environmental Impact Statement

Disclaimer: This document has been prepared based on information provided by others as cited in the Notes section. Stantec has not verified the accuracy and/or completeness of this information and shall not be responsible for any errors or omissions which may be incorporated herein as a result. Stantec assumes no responsibility for data supplied in electronic format, and the recipient accepts full responsibility for verifying the accuracy and completeness of the data.



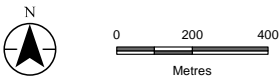
- ◆ 2011 Summer Brood Waterfowl Observation
- ▲ 2017 Spring Breeding Waterfowl Observation
- ▲ 2011 Spring Breeding Waterfowl Observation
- ▲ 2017 Fall Staging Waterfowl Observation
- 2019 Common Nighthawk Point Count Site
- 2019 Songbird Point Count Site

Mine Features

- Open Pit
- ▨ Waste Rock Pile
- ▭ Other Mine Infrastructure

ELC

- Anthropogenic
- Shrub Fen/Shrub Bog
- Open Water
- Black Spruce Forest
- Balsam Fir Forest
- Alder Thicket
- Kalmia-Black Spruce Forest
- Mixedwood Forest
- Regenerating Forest
- Riparian Transition
- Wet Coniferous Forest

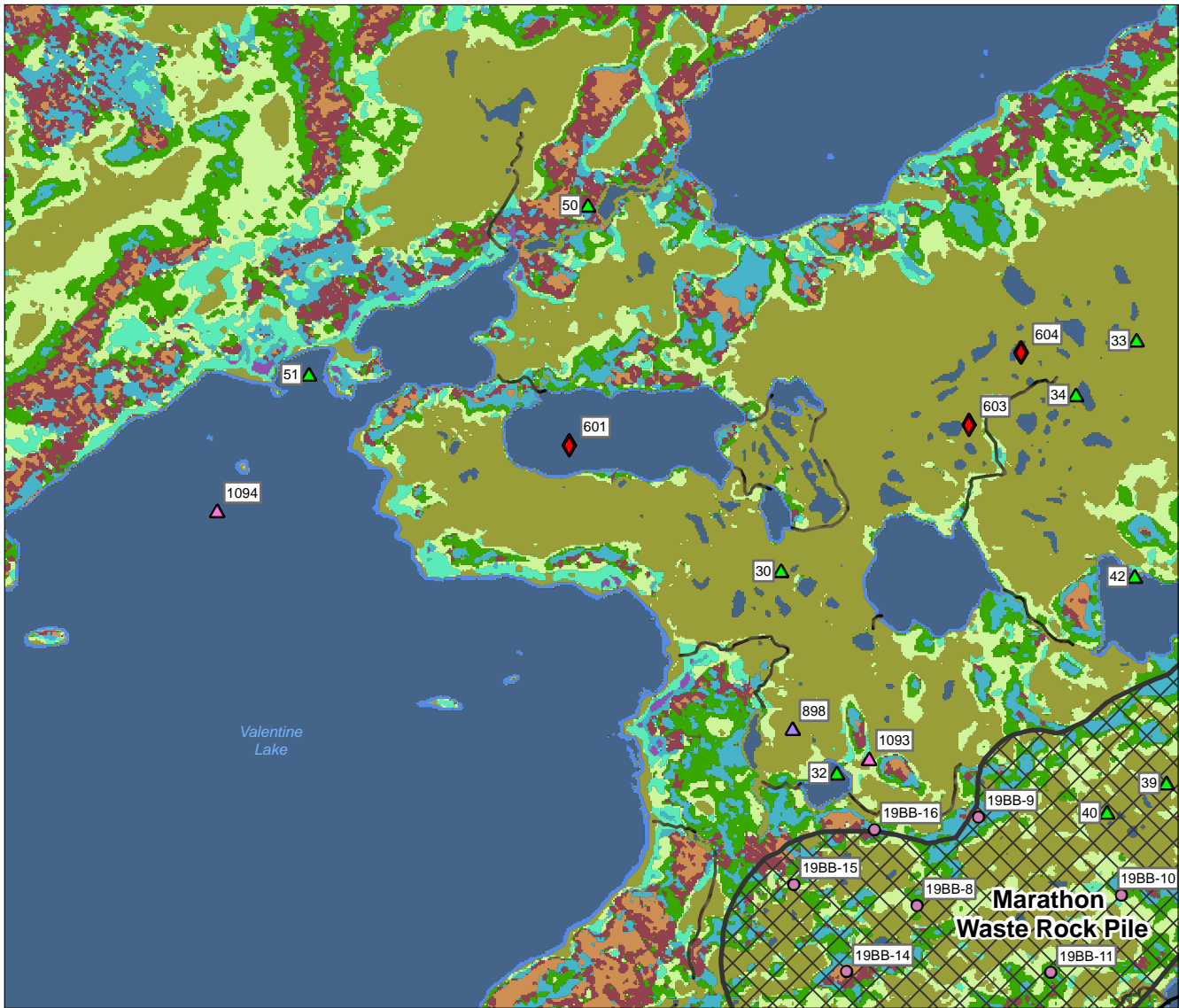


Project Location: Valentine Lake, Central Newfoundland, CA
Figure ECCC08.20

Client/Project: 121416408_IR50_ECCC08.2
 Marathon Gold Corporation
 Valentine Gold Project
 Environmental Impact Statement

Service Layer Credits: Source: Esri, Maxar, GeoEye, Earthstar Geographics, CNES/Airbus DS, USDA, USGS, AeroGRID, IGN, and the GIS User Community

Disclaimer: This document has been prepared based on information provided by others as cited in the Notes section. Stantec has not verified the accuracy and/or completeness of this information and shall not be responsible for any errors or omissions which may be incorporated herein as a result. Stantec assumes no responsibility for data supplied in electronic format, and the recipient accepts full responsibility for verifying the accuracy and completeness of the data.



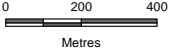
- ◆ 2011 Summer Brood Waterfowl Observation
- ▲ 2017 Spring Breeding Waterfowl Observation
- ▲ 2011 Spring Breeding Waterfowl Observation
- ▲ 2017 Fall Staging Waterfowl Observation
- 2019 Songbird Point Count Site

Mine Features

- Open Pit
- Waste Rock Pile

ELC

- Shrub Fen/Shrub Bog
- Open Water
- Black Spruce Forest
- Balsam Fir Forest
- Alder Thicket
- Kalmia-Black Spruce Forest
- Mixedwood Forest
- Regenerating Forest
- Riparian Transition
- Wet Coniferous Forest



Project Location
Valentine Lake
Central Newfoundland, CA

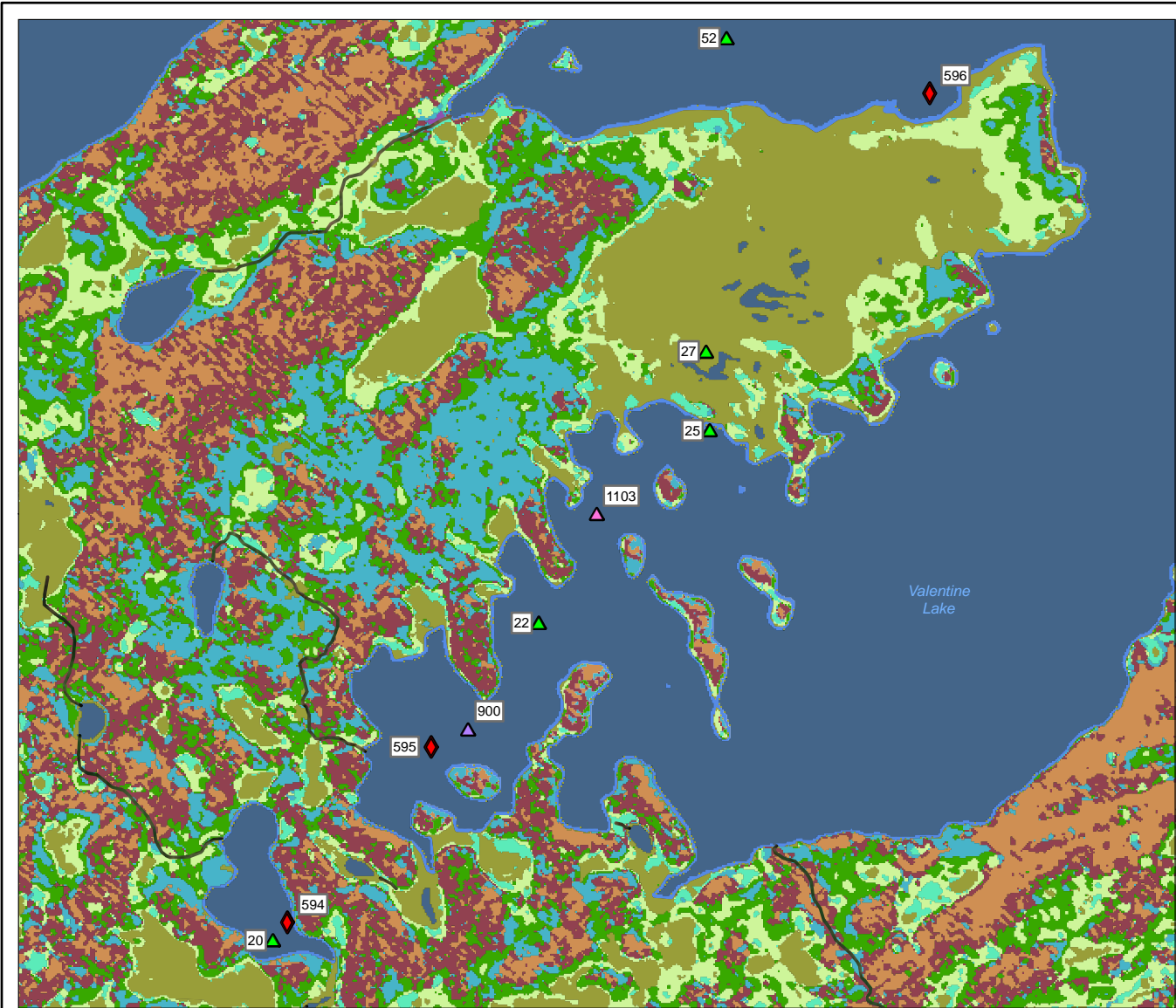
Figure ECC08.2p

Client/Project
Marathon Gold Corporation
Valentine Gold Project
Environmental Impact Statement

121416408_IR50_ECC08.2

Service Layer Credits: Source: Esri, Maxar, GeoEye, Earthstar Geographics, CNES/Airbus DS, USDA, USGS, AeroGRID, IGN, and the GIS User Community

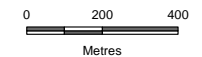
Disclaimer: This document has been prepared based on information provided by others as cited in the Notes section. Stantec has not verified the accuracy and/or completeness of this information and shall not be responsible for any errors or omissions which may be incorporated herein as a result. Stantec assumes no responsibility for data supplied in electronic format, and the recipient accepts full responsibility for verifying the accuracy and completeness of the data.



- ◆ 2011 Summer Brood Waterfowl Observation
- ▲ 2017 Spring Breeding Waterfowl Observation
- ▲ 2011 Spring Breeding Waterfowl Observation
- ▲ 2017 Fall Staging Waterfowl Observation

ELC

- Shrub Fen/Shrub Bog
- Open Water
- Black Spruce Forest
- Balsam Fir Forest
- Alder Thicket
- Kalmia-Black Spruce Forest
- Mixedwood Forest
- Regenerating Forest
- Riparian Transition
- Wet Coniferous Forest



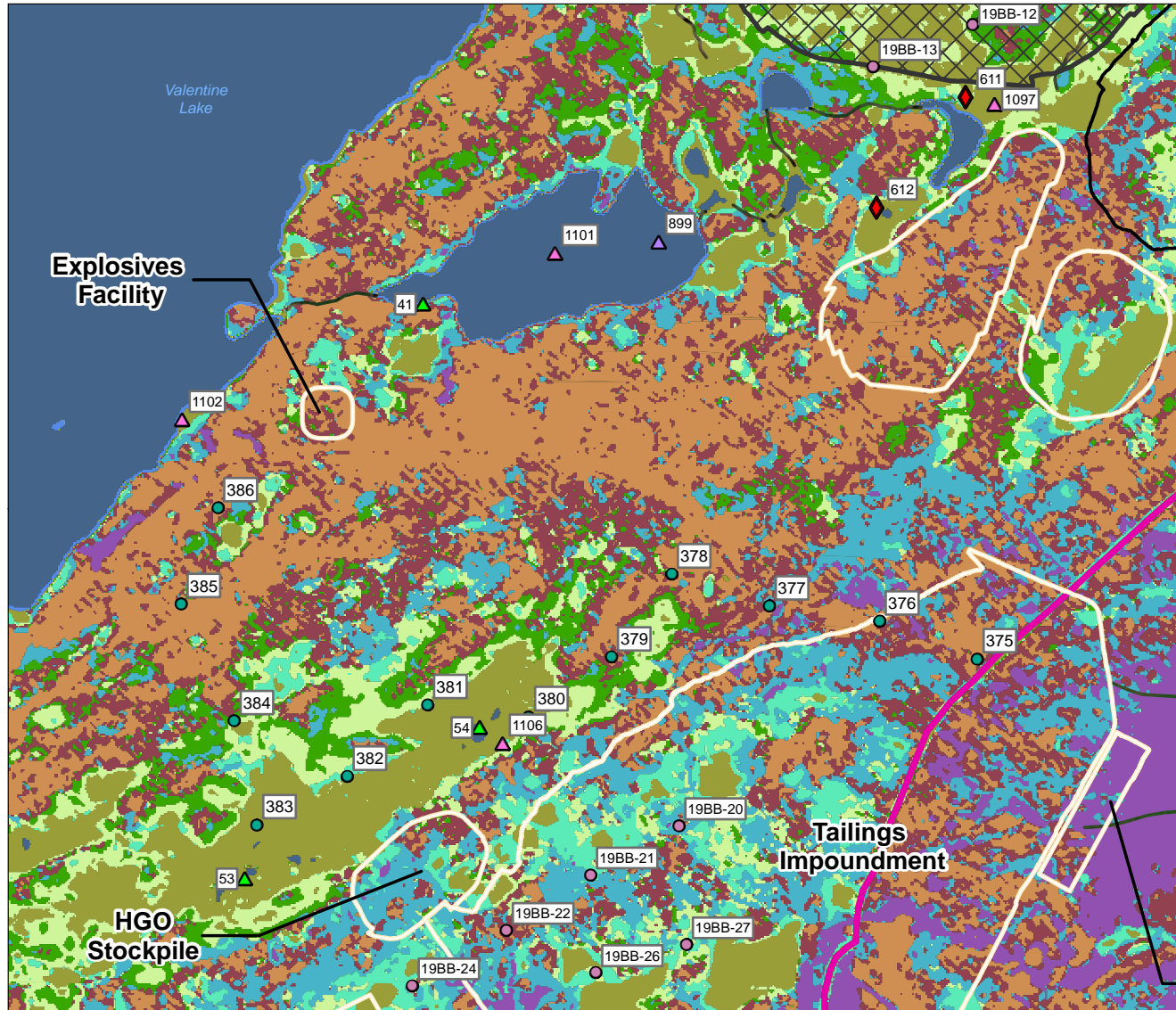
Project Location Valentine Lake
Central Newfoundland, CA

Figure ECCC08.2q




Client/Project 121416408_IR50_ECCC08.2
Marathon Gold Corporation
Valentine Gold Project
Environmental Impact Statement







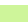




Service Layer Credits: Source: Esri, Maxar, GeoEye, Earthstar Geographics, CNES/Airbus DS, USDA, USGS, AeroGRID, IGN, and the GIS User Community

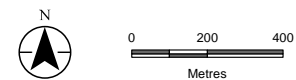
Disclaimer: This document has been prepared based on information provided by others as cited in the Notes section. Stantec has not verified the accuracy and/or completeness of this information and shall not be responsible for any errors or omissions which may be incorporated herein as a result. Stantec assumes no responsibility for data supplied in electronic format, and the recipient accepts full responsibility for verifying the accuracy and completeness of the data.



-  2011 Summer Brood Waterfowl Observation
-  2017 Spring Breeding Waterfowl Observation
-  2011 Spring Breeding Waterfowl Observation
-  2017 Fall Staging Waterfowl Observation
-  2011 Songbird Point Count Site
-  2019 Songbird Point Count Site

- Mine Features**
-  Open Pit
 -  Waste Rock Pile
 -  Other Mine Infrastructure

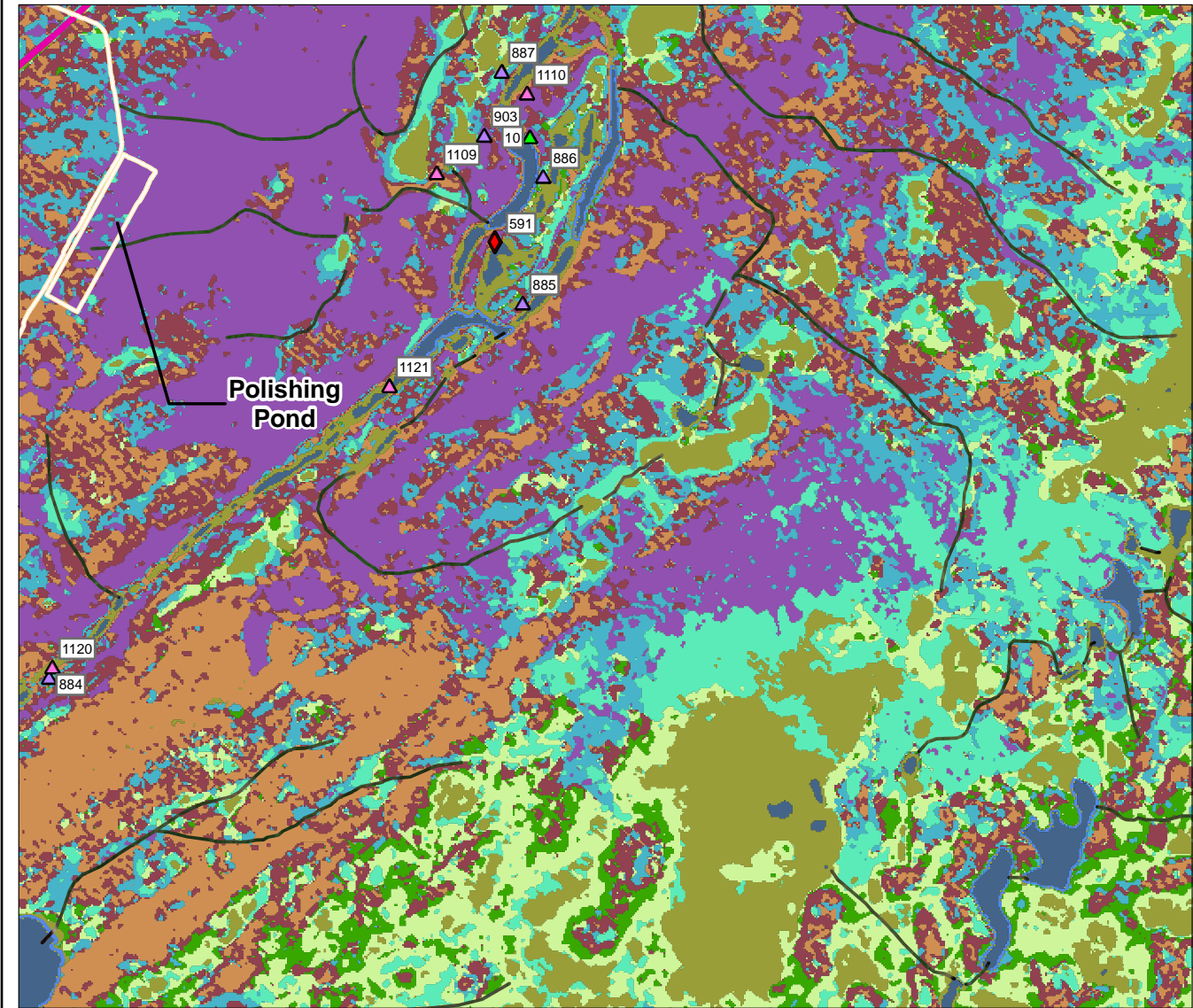
- ELC**
-  Anthropogenic
 -  Shrub Fen/Shrub Bog
 -  Open Water
 -  Black Spruce Forest
 -  Balsam Fir Forest
 -  Alder Thicket
 -  Kalmia-Black Spruce Forest
 -  Mixedwood Forest
 -  Regenerating Forest
 -  Riparian Transition
 -  Wet Coniferous Forest



Project Location **Figure ECCC08.2r**
 Valentine Lake
 Central Newfoundland, CA

Client/Project 121416408_IR50_ECCC08.2
 Marathon Gold Corporation
 Valentine Gold Project
 Environmental Impact Statement

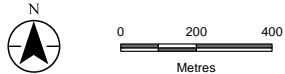
Disclaimer: This document has been prepared based on information provided by others as cited in the Notes section. Stantec has not verified the accuracy and/or completeness of this information and shall not be responsible for any errors or omissions which may be incorporated herein as a result. Stantec assumes no responsibility for data supplied in electronic format, and the recipient accepts full responsibility for verifying the accuracy and completeness of the data.



- 2011 Summer Brood Waterfowl Observation
- 2017 Spring Breeding Waterfowl Observation
- 2011 Spring Breeding Waterfowl Observation
- 2017 Fall Staging Waterfowl Observation

- Mine Features**
- Other Mine Infrastructure

- ELC**
- Anthropogenic
 - Shrub Fen/Shrub Bog
 - Open Water
 - Black Spruce Forest
 - Balsam Fir Forest
 - Alder Thicket
 - Kalmia-Black Spruce Forest
 - Mixedwood Forest
 - Regenerating Forest
 - Riparian Transition
 - Wet Coniferous Forest



Project Location
Valentine Lake
Central Newfoundland, CA

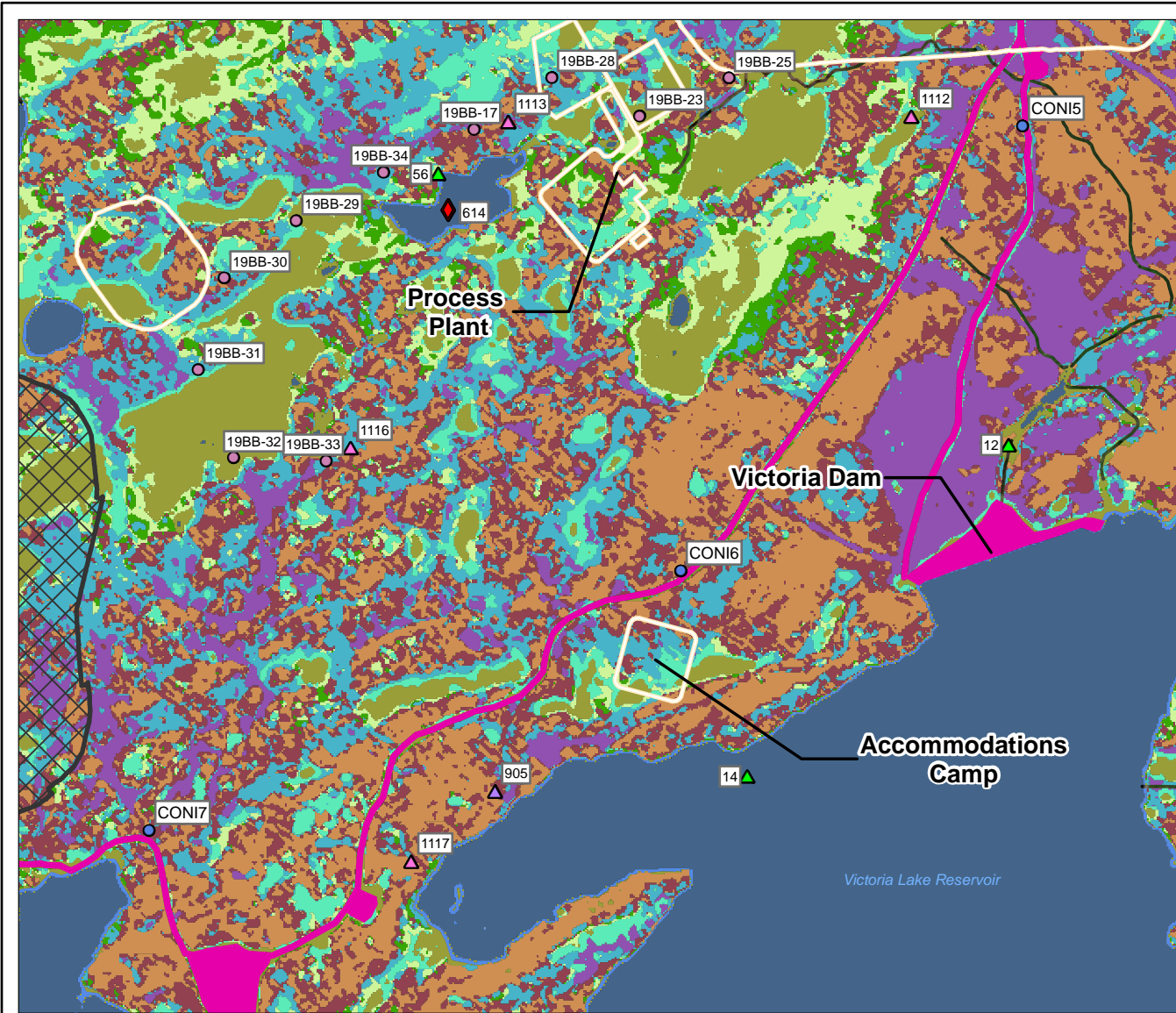
Figure ECCC08.2s

Client/Project
Marathon Gold Corporation
Valentine Gold Project
Environmental Impact Statement

121416408_IR50_ECCC08.2

Disclaimer: This document has been prepared based on information provided by others as cited in the Notes section. Stantec has not verified the accuracy and/or completeness of this information and shall not be responsible for any errors or omissions which may be incorporated herein as a result. Stantec assumes no responsibility for data supplied in electronic format, and the recipient accepts full responsibility for verifying the accuracy and completeness of the data.

Service Layer Credits: Source: Esri, Maxar, GeoEye, Earthstar Geographics, CNES/Airbus DS, USDA, USGS, AeroGRID, IGN, and the GIS User Community



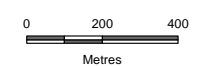
- ◆ 2011 Summer Brood Waterfowl Observation
- ▲ 2017 Spring Breeding Waterfowl Observation
- ▲ 2011 Spring Breeding Waterfowl Observation
- ▲ 2017 Fall Staging Waterfowl Observation
- 2019 Common Nighthawk Point Count Site
- 2019 Songbird Point Count Site

Mine Features

- ⊠ Waste Rock Pile
- Other Mine Infrastructure

ELC

- Anthropogenic
- Shrub Fen/Shrub Bog
- Open Water
- Black Spruce Forest
- Balsam Fir Forest
- Alder Thicket
- Kalmia-Black Spruce Forest
- Mixedwood Forest
- Regenerating Forest
- Riparian Transition
- Wet Coniferous Forest

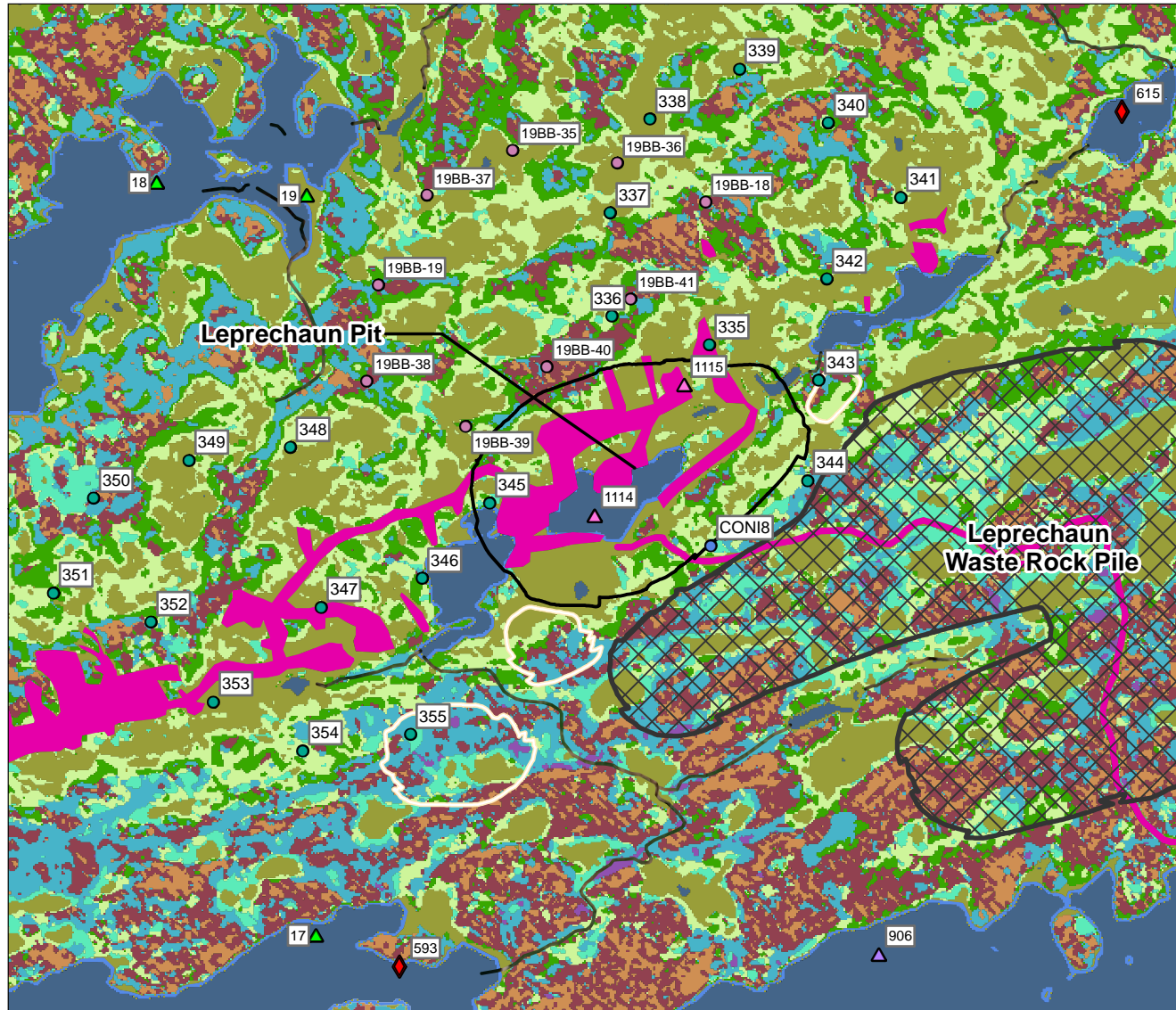


Project Location: Valentine Lake, Central Newfoundland, CA
Figure ECCC08.2t

Client/Project: 121416408_IR50_ECCCC08.2
 Marathon Gold Corporation
 Valentine Gold Project
 Environmental Impact Statement

Service Layer Credits: Source: Esri, Maxar, GeoEye, Earthstar Geographics, CNES/Airbus DS, USDA, USGS, AeroGRID, IGN, and the GIS User Community

Disclaimer: This document has been prepared based on information provided by others as cited in the Notes section. Stantec has not verified the accuracy and/or completeness of this information and shall not be responsible for any errors or omissions which may be incorporated herein as a result. Stantec assumes no responsibility for data supplied in electronic format, and the recipient accepts full responsibility for verifying the accuracy and completeness of the data.



- 2011 Summer Brood Waterfowl Observation
- 2017 Spring Breeding Waterfowl Observation
- 2011 Spring Breeding Waterfowl Observation
- 2017 Fall Staging Waterfowl Observation
- 2019 Common Nighthawk Point Count Site
- 2011 Songbird Point Count Site
- 2019 Songbird Point Count Site

- Mine Features**
- Open Pit
 - Waste Rock Pile
 - Other Mine Infrastructure

- ELC**
- Anthropogenic
 - Shrub Fen/Shrub Bog
 - Open Water
 - Black Spruce Forest
 - Balsam Fir Forest
 - Alder Thicket
 - Kalmia-Black Spruce Forest
 - Mixedwood Forest
 - Regenerating Forest
 - Riparian Transition
 - Wet Coniferous Forest



Project Location
Valentine Lake
Central Newfoundland, CA

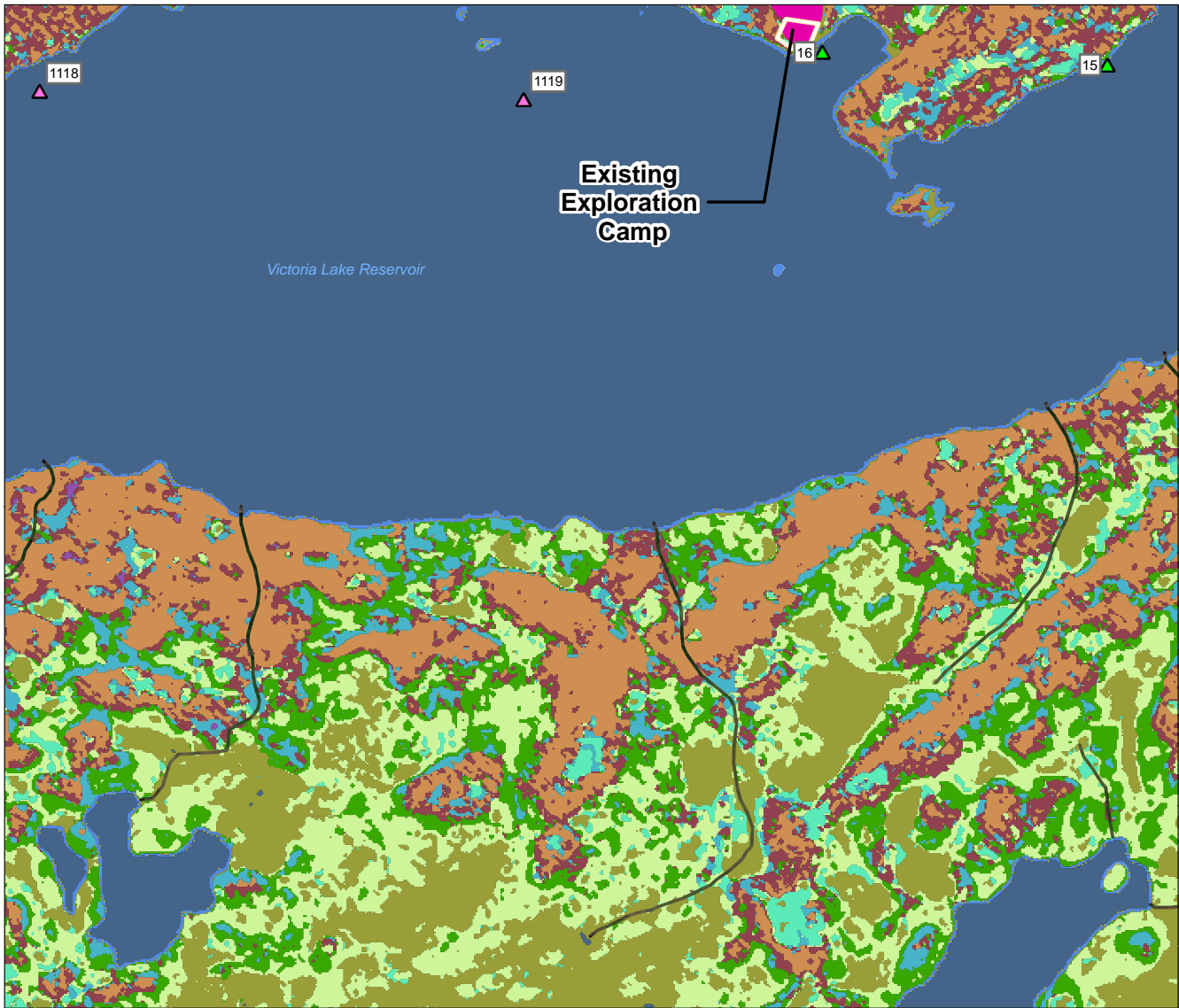
Figure ECCC08.2u

Client/Project
Marathon Gold Corporation
Valentine Gold Project
Environmental Impact Statement

121416408_IR50_ECCC08.2

Disclaimer: This document has been prepared based on information provided by others as cited in the Notes section. Stantec has not verified the accuracy and/or completeness of this information and shall not be responsible for any errors or omissions which may be incorporated herein as a result. Stantec assumes no responsibility for data supplied in electronic format, and the recipient accepts full responsibility for verifying the accuracy and completeness of the data.

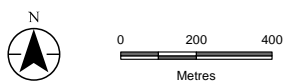
Service Layer Credits: Source: Esri, Maxar, GeoEye, Earthstar Geographics, CNES/Airbus DS, USDA, USGS, AeroGRID, IGN, and the GIS User Community



- 2017 Spring Breeding Waterfowl Observation
- 2011 Spring Breeding Waterfowl Observation

- Mine Features**
- Other Mine Infrastructure

- ELC**
- Anthropogenic
 - Shrub Fen/Shrub Bog
 - Open Water
 - Black Spruce Forest
 - Balsam Fir Forest
 - Alder Thicket
 - Kalmia-Black Spruce Forest
 - Mixedwood Forest
 - Regenerating Forest
 - Riparian Transition
 - Wet Coniferous Forest



Project Location
Valentine Lake
Central Newfoundland, CA

Figure ECCC08.2v

Client/Project
Marathon Gold Corporation
Valentine Gold Project
Environmental Impact Statement

121416408_IR50_ECCCC08.2

Disclaimer: This document has been prepared based on information provided by others as cited in the Notes section. Stantec has not verified the accuracy and/or completeness of this information and shall not be responsible for any errors or omissions which may be incorporated herein as a result. Stantec assumes no responsibility for data supplied in electronic format, and the recipient accepts full responsibility for verifying the accuracy and completeness of the data.

Service Layer Credits: Source: Esri, Maxar, GeoEye, Earthstar Geographics, CNES/Airbus DS, USDA, USGS, AeroGRID, IGN, and the GIS User Community