

Northern Riders ATV Association

Environmental Registration

File Ref No. 200.20.2928

Crown Lands Application No. 151853

## Northern Riders ATV Association

Contact: Desmond McDonald  
P.O. Box 493  
2 Balsam Drive  
St. Anthony, NL  
A0K4S0  
  
709-454-6046  
[Dmcd6@hotmail.com](mailto:Dmcd6@hotmail.com)

### UNDERTAKING

The Northern Riders ATV trail system will help connect recreational ATV users on the tip of the Great Northern Peninsula to the trail systems on the rest of the Island.

This trail system will allow recreational ATV users in the area to access the wilderness year round. It will allow them to access cabin lots and other areas that were previously only accessible by snow machine in winter months.

The creation of a trail system will produce added economic benefit to the region. It is expected that the creation of a trail system will encourage other people to become involved in the outdoor activity. This will increase business for recreational products dealers, convenience stores, and gas stations. As people begin to travel to the area, it has the potential to open up ATV tourism and that will benefit local accommodation providers and restaurants.

## DESCRIPTION OF UNDERTAKING

### Geographical Location

The trail system is located on the tip of the Great Northern peninsula of the Island of Newfoundland. The trail system will begin at an ATV offloading area on Goose Cove road, approximately 1 km south of St. Anthony. It will begin at and follow the existing snowmobile trail for the first few kilometers. . Approximate coordinates of the starting area are 51.366816, -55.612707. The trail will then head in a general North East direction and end at the beginning of the old Big Brook road reserve. Approximate coordinates of the end point of the ATV trail are 51.536897, -55.942820. There are also a number of sub trails that will branch off into other directions that will completely utilize the existing snowmobile trail system.

### Physical Features and Construction

The trail system will mainly use the existing snowmobile trail system. There will be some new trail construction in areas where there are no current snowmobile trails. The current snowmobile trails system will require upgrades in certain sections to cross small streams or muddy areas. There are also sections of the trail that will follow a number of old road reserves and old uncertified trails that have been used for years. The hope is to minimize the environmental impact by using areas that already show signs of human activity.

Construction of the trails will involve some cutting of trees, grubbing of the forest floor, and creation of the trail using existing soil materials. There will also be the potential construction of some small wooden bridges or the placement of some culverts to cross small waterways. Where bog land is to be crossed, bog mats will be used to limit the environmental impact. During the construction phase, the main concern for pollution or contamination is a petroleum spill of some kind from the use of excavators, ATVs and chainsaws. Every effort will be taken to avoid this possibility.

Every effort will be taken to mitigate any negative impacts on native wildlife species. Attempts will be made to maintain proper buffers to large bodies of water and to avoid any areas that may have protected species of flora and fauna.

## Operation

The trail will be operated by the Northern Riders ATV association in conjunction with The Northern Drifters Snowmobile Association. Northern Riders ATV Association will maintain the trails through the hard work of volunteers during the ATV season. The Northern Drifters Snowmobile association will maintain the trails during the winter riding season. Maintenance will be paid for through the sale of trail passes and the fundraising efforts of volunteers.

## Occupations

During the construction phase there may be some staff hired to help clear brush, build bridges and map the trail. There will be an excavator hired to help construct the trail system. Most of the work will be completed by volunteers when they are available.

## APPROVAL OF UNDERTAKING

Newfoundland and Labrador Snowmobile Federation – Approval to Use Trail System  
Town of St. Anthony – Municipal Approval of Crown Lands Application  
Dept. of Fisheries and Land Resources – Approval of Crown Lands Application to Occupy  
Dept. of Municipal Affairs and Environment – Approval of Environmental Assessment

## SCHEDULE

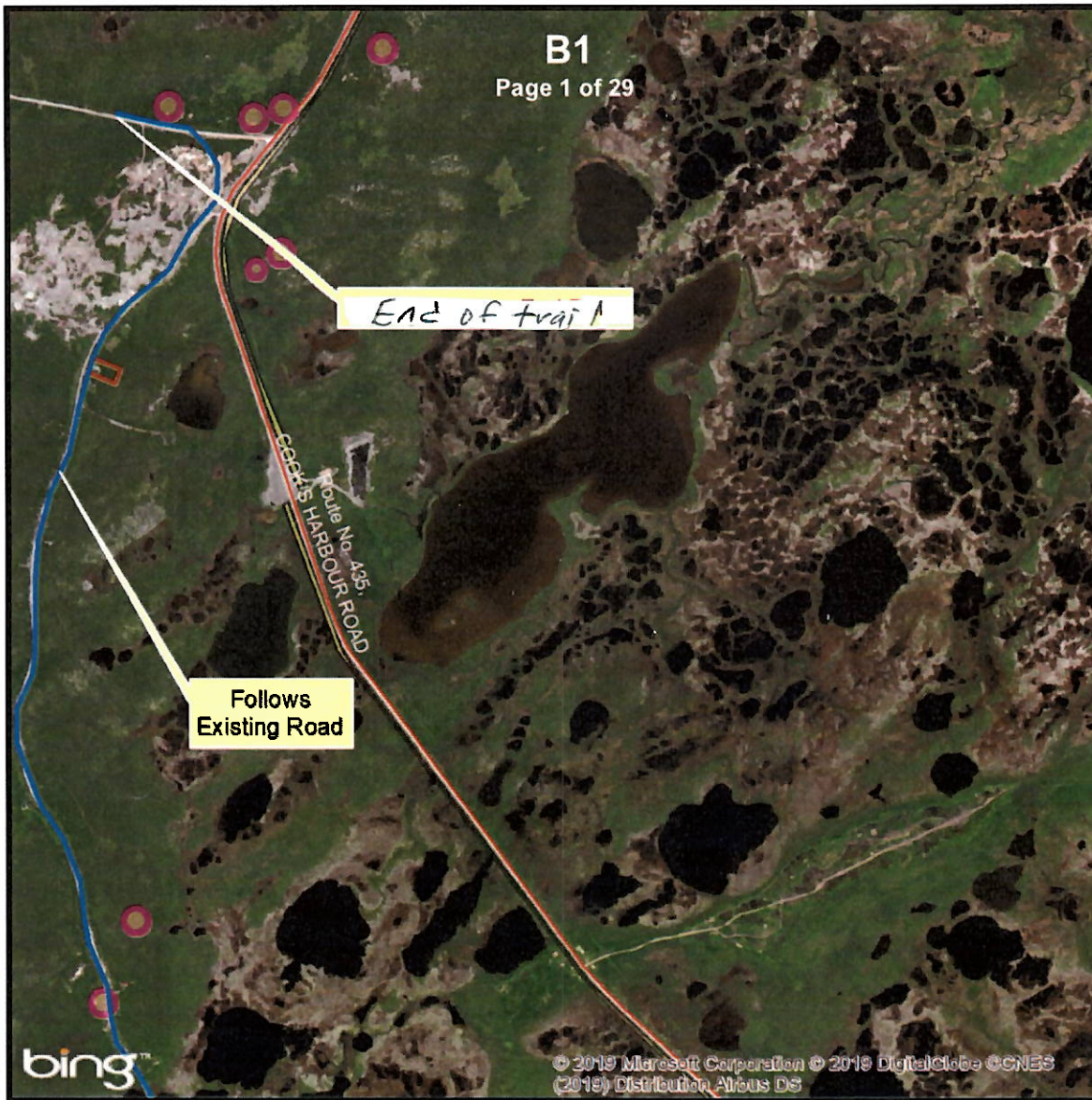
Construction and upgrading of the trail is tentatively scheduled to begin by June of 2020. It will be a multi-year project. It will require fundraising efforts to accumulate funds to purchase materials and hire an excavator. Upon necessary approvals, JCP programs will be applied for to help with the work necessary to complete the trail.

Date: March 10, 2020



Desmond McDonald  
Northern Riders ATV Association

# Government of Newfoundland & Labrador Department of Fisheries & Land Resources Crown Lands Administration Division



## NOTE TO USERS

The information on this map was compiled from land surveys registered in the Crown Lands Registry.

Since the Registry does not contain information on all land ownership within the Province, the information depicted cannot be considered complete.

The boundary lines shown are intended to be used as an index to land titles issued by the Crown. The accuracy of the plot is not sufficient for measurement purposes and does not guarantee title.

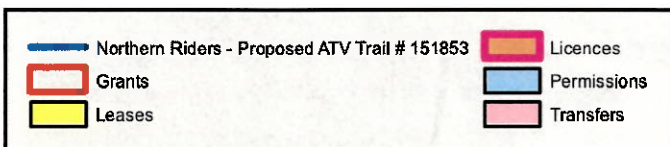
Users finding any errors or omissions on this map sheet are asked to contact the Crown Lands Inquiries Line by telephone at 1-833-891-3249 or by email at [CrownLandsInfo@gov.nl.ca](mailto:CrownLandsInfo@gov.nl.ca).

Some titles may not be plotted due to Crown Lands volumes missing from the Crown Lands registry or not plotted due to insufficient survey information.

The User hereby indemnifies and saves harmless the Minister, his officers, employees and agents from and against all claims, demands, liabilities, actions or cause of actions alleging any loss, injury, damages and matter (including claims or demands for any violation of copyright or intellectual property) arising out of any missing or incomplete Crown Land titles, and the Minister, his or her officers, employees and agents shall not be liable for any loss of profits or contracts or any other loss of any kind as a result.

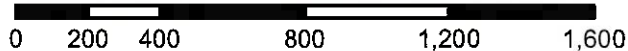
For inquiries please contact the Crown Lands Inquiries Line by telephone at 1-833-891-3249 or by email at [CrownLandsInfo@gov.nl.ca](mailto:CrownLandsInfo@gov.nl.ca). Or visit the nearest Regional Lands Office; [http://www.flr.gov.nl.ca/department/contact\\_lands.html](http://www.flr.gov.nl.ca/department/contact_lands.html)

Author: J Bannister  
Date: 12/23/2019



1:20,000

Meters



# Government of Newfoundland & Labrador Department of Fisheries & Land Resources Crown Lands Administration Division



## NOTE TO USERS

The information on this map was compiled from land surveys registered in the Crown Lands Registry.

Since the Registry does not contain information on all land ownership within the Province, the information depicted cannot be considered complete.

The boundary lines shown are intended to be used as an index to land titles issued by the Crown. The accuracy of the plot is not sufficient for measurement purposes and does not guarantee title.

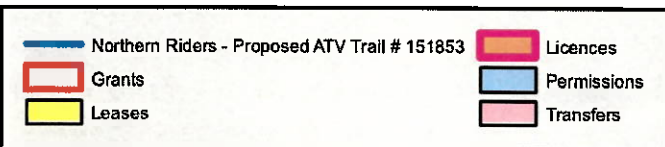
Users finding any errors or omissions on this map sheet are asked to contact the Crown Lands Inquiries Line by telephone at 1-833-891-3249 or by email at [CrownLandsInfo@gov.nl.ca](mailto:CrownLandsInfo@gov.nl.ca).

Some titles may not be plotted due to Crown Lands volumes missing from the Crown Lands registry or not plotted due to insufficient survey information.

The User hereby indemnifies and saves harmless the Minister, his officers, employees and agents from and against all claims, demands, liabilities, actions or cause of actions alleging any loss, injury, damages and matter (including claims or demands for any violation of copyright or intellectual property) arising out of any missing or incomplete Crown Land titles, and the Minister, his or her officers, employees and agents shall not be liable for any loss of profits or contracts or any other loss of any kind as a result.

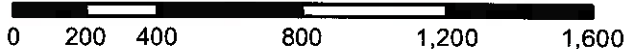
For inquiries please contact the Crown Lands Inquiries Line by telephone at 1-833-891-3249 or by email at [CrownLandsInfo@gov.nl.ca](mailto:CrownLandsInfo@gov.nl.ca). Or visit the nearest Regional Lands Office; [http://www.flr.gov.nl.ca/department/contact\\_lands.html](http://www.flr.gov.nl.ca/department/contact_lands.html)

Author: J Bannister  
Date: 12/23/2019

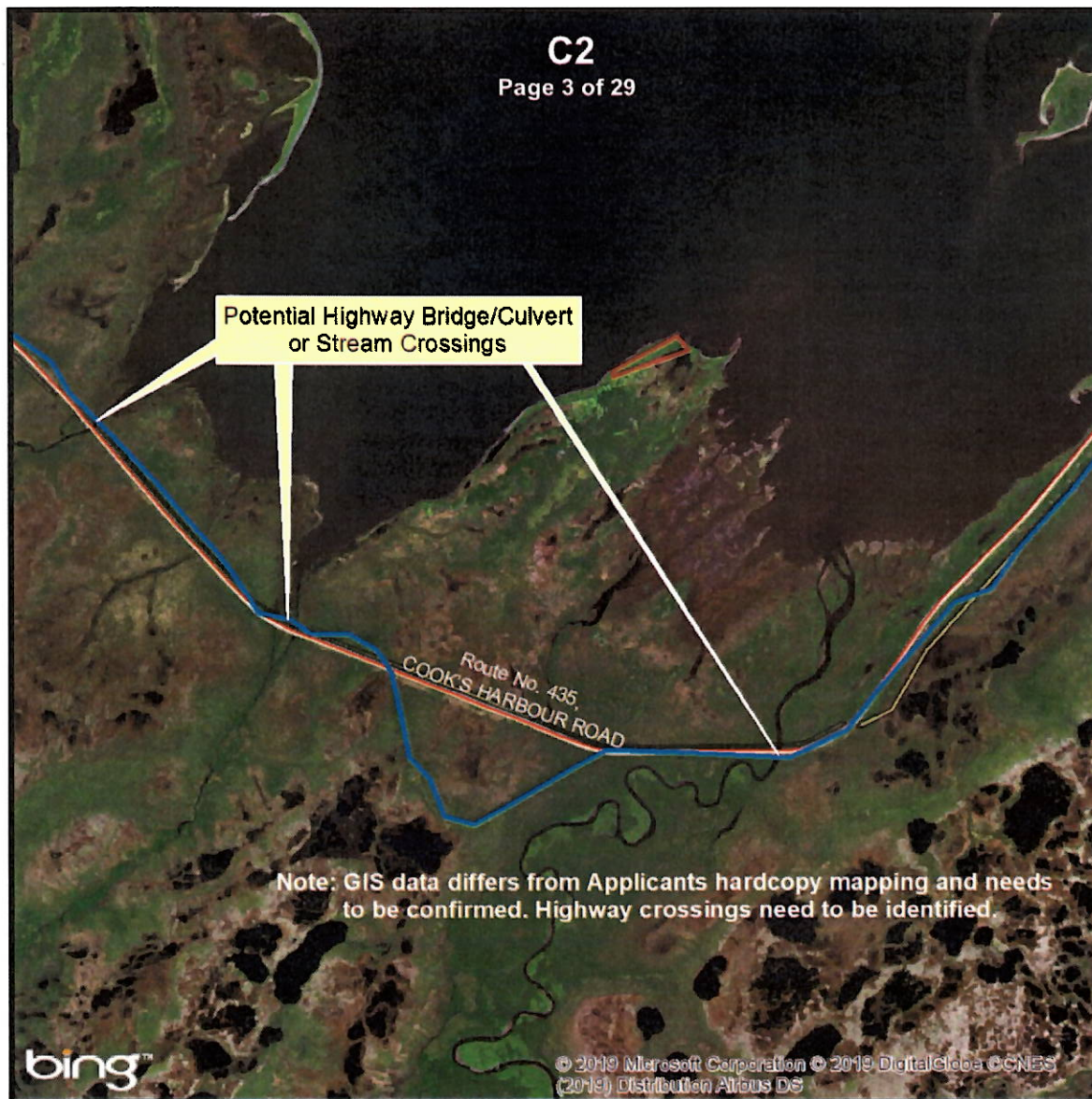


1:20,000

Meters



# Government of Newfoundland & Labrador Department of Fisheries & Land Resources Crown Lands Administration Division



## NOTE TO USERS

The information on this map was compiled from land surveys registered in the Crown Lands Registry.

Since the Registry does not contain information on all land ownership within the Province, the information depicted cannot be considered complete.

The boundary lines shown are intended to be used as an index to land titles issued by the Crown. The accuracy of the plot is not sufficient for measurement purposes and does not guarantee title.

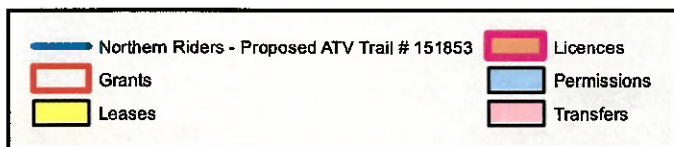
Users finding any errors or omissions on this map sheet are asked to contact the Crown Lands Inquiries Line by telephone at 1-833-891-3249 or by email at [CrownLandsInfo@gov.nl.ca](mailto:CrownLandsInfo@gov.nl.ca).

Some titles may not be plotted due to Crown Lands volumes missing from the Crown Lands registry or not plotted due to insufficient survey information.

The User hereby indemnifies and saves harmless the Minister, his officers, employees and agents from and against all claims, demands, liabilities, actions or cause of actions alleging any loss, injury, damages and matter (including claims or demands for any violation of copyright or intellectual property) arising out of any missing or incomplete Crown Land titles, and the Minister, his or her officers, employees and agents shall not be liable for any loss of profits or contracts or any other loss of any kind as a result.

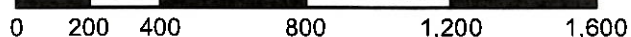
For inquiries please contact the Crown Lands Inquiries Line by telephone at 1-833-891-3249 or by email at [CrownLandsInfo@gov.nl.ca](mailto:CrownLandsInfo@gov.nl.ca). Or visit the nearest Regional Lands Office; [http://www.flr.gov.nl.ca/departement/contact\\_land.html](http://www.flr.gov.nl.ca/departement/contact_land.html)

Author: J Bannister  
Date: 12/23/2019



1:20,000

Meters



# Government of Newfoundland & Labrador Department of Fisheries & Land Resources Crown Lands Administration Division



C3

Page 4 of 29



### NOTE TO USERS

The information on this map was compiled from land surveys registered in the Crown Lands Registry.

Since the Registry does not contain information on all land ownership within the Province, the information depicted cannot be considered complete.

The boundary lines shown are intended to be used as an index to land titles issued by the Crown. The accuracy of the plot is not sufficient for measurement purposes and does not guarantee title.

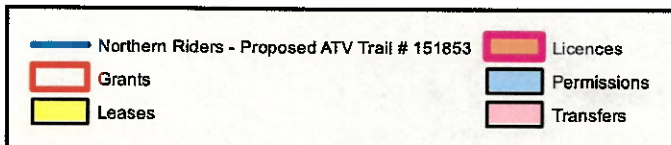
Users finding any errors or omissions on this map sheet are asked to contact the Crown Lands Inquiries Line by telephone at 1-833-891-3249 or by email at [CrownLandsInfo@gov.nl.ca](mailto:CrownLandsInfo@gov.nl.ca).

Some titles may not be plotted due to Crown Lands volumes missing from the Crown Lands registry or not plotted due to insufficient survey information.

The User hereby indemnifies and saves harmless the Minister, his officers, employees and agents from and against all claims, demands, liabilities, actions or cause of actions alleging any loss, injury, damages and matter (including claims or demands for any violation of copyright or intellectual property) arising out of any missing or incomplete Crown Land titles, and the Minister, his or her officers, employees and agents shall not be liable for any loss of profits or contracts or any other loss of any kind as a result.

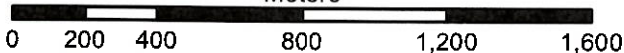
For inquiries please contact the Crown Lands Inquiries Line by telephone at 1-833-891-3249 or by email at [CrownLandsInfo@gov.nl.ca](mailto:CrownLandsInfo@gov.nl.ca). Or visit the nearest Regional Lands Office; [http://www.flr.gov.nl.ca/departement/contact\\_land.html](http://www.flr.gov.nl.ca/departement/contact_land.html)

Author: J Barnister  
Date: 12/23/2019



1:20,000

Meters





# Government of Newfoundland & Labrador Department of Fisheries & Land Resources Crown Lands Administration Division



## NOTE TO USERS

The information on this map was compiled from land surveys registered in the Crown Lands Registry.

Since the Registry does not contain information on all land ownership within the Province, the information depicted cannot be considered complete.

The boundary lines shown are intended to be used as an index to land titles issued by the Crown. The accuracy of the plot is not sufficient for measurement purposes and does not guarantee title.

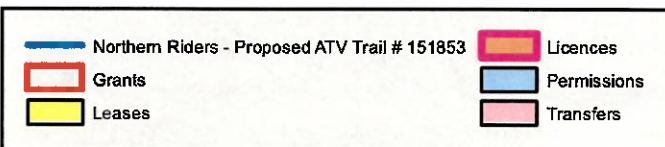
Users finding any errors or omissions on this map sheet are asked to contact the Crown Lands Inquiries Line by telephone at 1-833-891-3249 or by email at [CrownLandsInfo@gov.nl.ca](mailto:CrownLandsInfo@gov.nl.ca).

Some titles may not be plotted due to Crown Lands volumes missing from the Crown Lands registry or not plotted due to insufficient survey information.

The User hereby indemnifies and saves harmless the Minister, his officers, employees and agents from and against all claims, demands, liabilities, actions or cause of actions alleging any loss, injury, damages and matter (including claims or demands for any violation of copyright or intellectual property) arising out of any missing or incomplete Crown Land titles, and the Minister, his or her officers, employees and agents shall not be liable for any loss of profits or contracts or any other loss of any kind as a result.

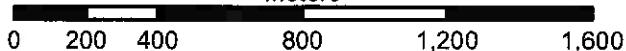
For inquiries please contact the Crown Lands Inquiries Line by telephone at 1-833-891-3249 or by email at [CrownLandsInfo@gov.nl.ca](mailto:CrownLandsInfo@gov.nl.ca). Or visit the nearest Regional Lands Office; [http://www.flr.gov.nl.ca/department/contact\\_lands.html](http://www.flr.gov.nl.ca/department/contact_lands.html)

Author: J Bannister  
Date: 12/23/2019



1:20,000

Meters



# Government of Newfoundland & Labrador Department of Fisheries & Land Resources Crown Lands Administration Division



## NOTE TO USERS

The information on this map was compiled from land surveys registered in the Crown Lands Registry.

Since the Registry does not contain information on all land ownership within the Province, the information depicted cannot be considered complete.

The boundary lines shown are intended to be used as an index to land titles issued by the Crown. The accuracy of the plot is not sufficient for measurement purposes and does not guarantee title.

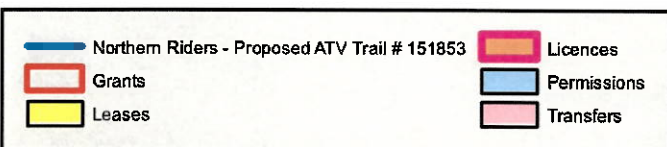
Users finding any errors or omissions on this map sheet are asked to contact the Crown Lands Inquiries Line by telephone at 1-833-891-3249 or by email at [CrownLandsInfo@gov.nl.ca](mailto:CrownLandsInfo@gov.nl.ca).

Some titles may not be plotted due to Crown Lands volumes missing from the Crown Lands registry or not plotted due to insufficient survey information.

The User hereby indemnifies and saves harmless the Minister, his officers, employees and agents from and against all claims, demands, liabilities, actions or cause of actions alleging any loss, injury, damages and matter (including claims or demands for any violation of copyright or intellectual property) arising out of any missing or incomplete Crown Land titles, and the Minister, his or her officers, employees and agents shall not be liable for any loss of profits or contracts or any other loss of any kind as a result.

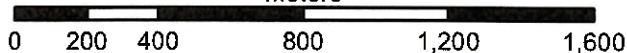
For inquiries please contact the Crown Lands Inquiries Line by telephone at 1-833-891-3249 or by email at [CrownLandsInfo@gov.nl.ca](mailto:CrownLandsInfo@gov.nl.ca). Or visit the nearest Regional Lands Office; [http://www.flr.gov.nl.ca/departement/contact\\_lands.html](http://www.flr.gov.nl.ca/departement/contact_lands.html)

Author: J Bannister  
Date: 12/23/2019

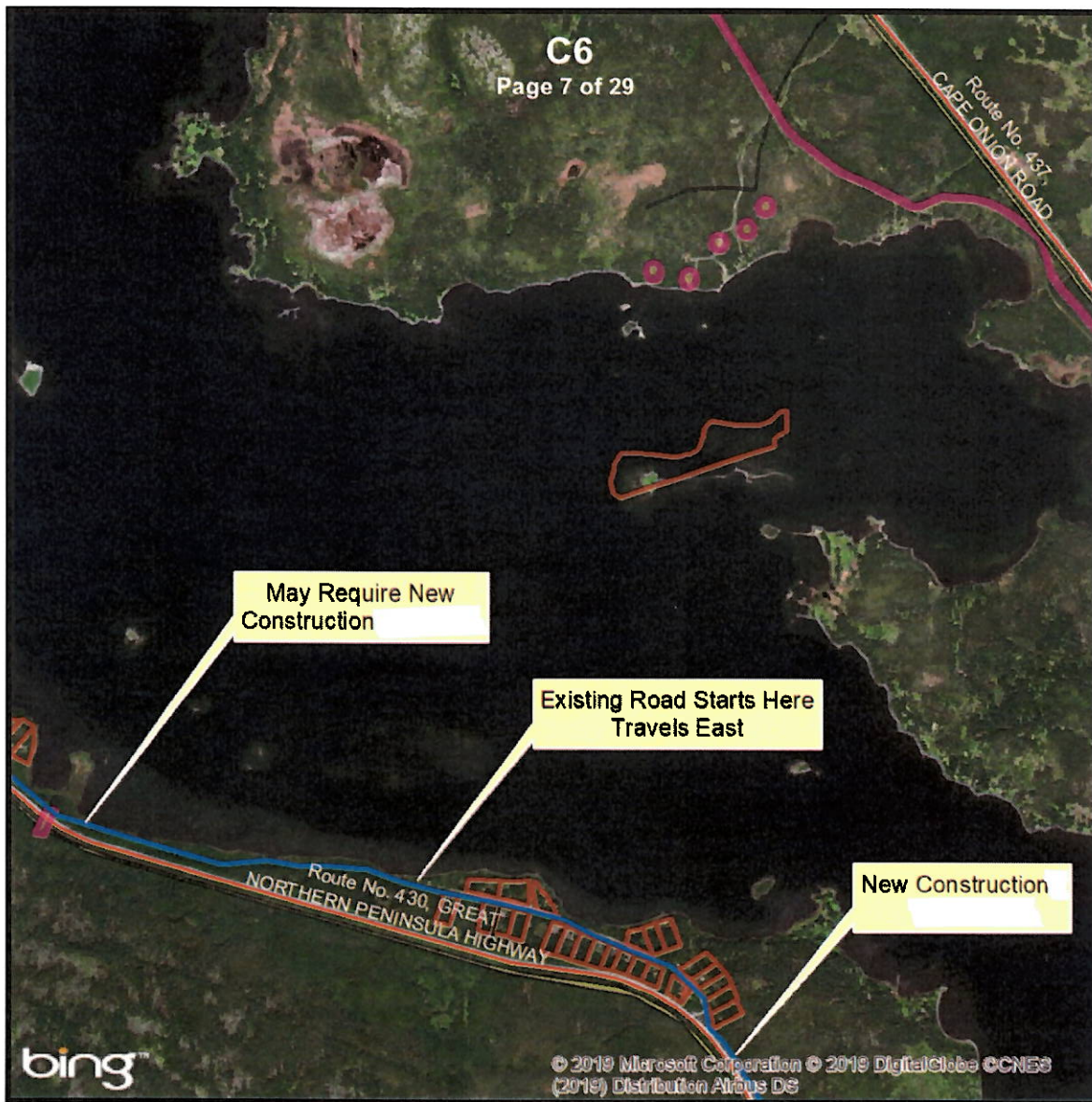


1:20,000

Meters



# Government of Newfoundland & Labrador Department of Fisheries & Land Resources Crown Lands Administration Division



## NOTE TO USERS

The information on this map was compiled from land surveys registered in the Crown Lands Registry.

Since the Registry does not contain information on all land ownership within the Province, the information depicted cannot be considered complete.

The boundary lines shown are intended to be used as an index to land titles issued by the Crown. The accuracy of the plot is not sufficient for measurement purposes and does not guarantee title.

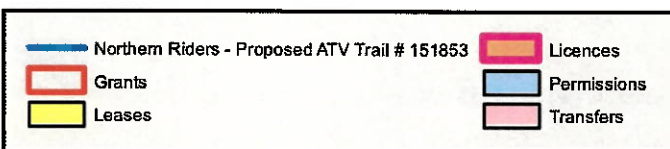
Users finding any errors or omissions on this map sheet are asked to contact the Crown Lands Inquiries Line by telephone at 1-833-891-3249 or by email at CrownLandsInfo@gov.nl.ca.

Some titles may not be plotted due to Crown Lands volumes missing from the Crown Lands registry or not plotted due to insufficient survey information.

The User hereby indemnifies and saves harmless the Minister, his officers, employees and agents from and against all claims, demands, liabilities, actions or cause of actions alleging any loss, injury, damages and matter (including claims or demands for any violation of copyright or intellectual property) arising out of any missing or incomplete Crown Land titles, and the Minister, his or her officers, employees and agents shall not be liable for any loss of profits or contracts or any other loss of any kind as a result.

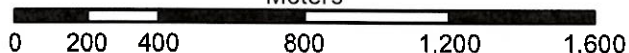
For inquiries please contact the Crown Lands Inquiries Line by telephone at 1-833-891-3249 or by email at CrownLandsInfo@gov.nl.ca. Or visit the nearest Regional Lands Office; [http://www.flr.gov.nl.ca/department/contact\\_land.html](http://www.flr.gov.nl.ca/department/contact_land.html)

Author: J Bannister  
Date: 12/23/2019

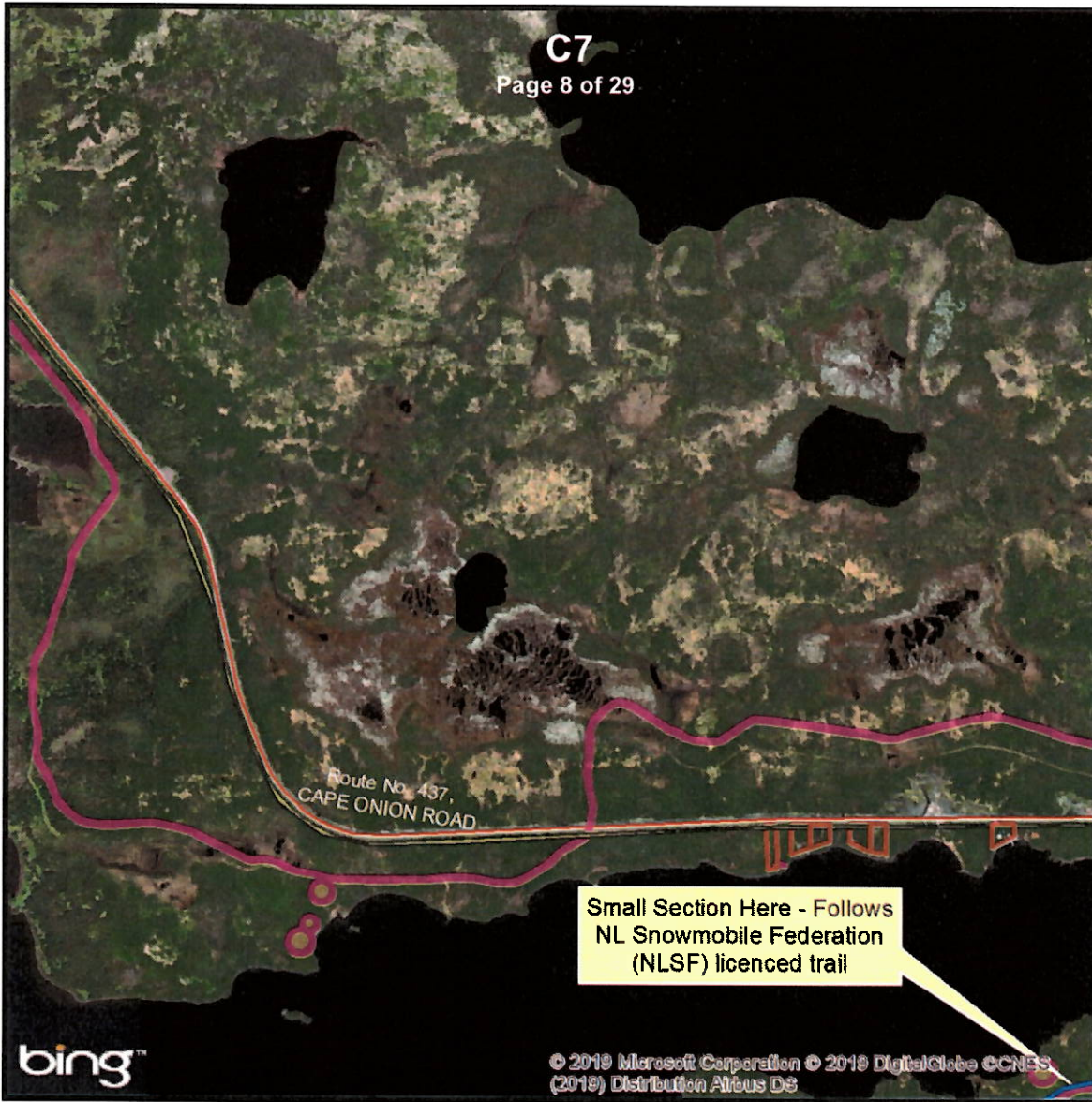


1:20,000

Meters



# Government of Newfoundland & Labrador Department of Fisheries & Land Resources Crown Lands Administration Division



## NOTE TO USERS

The information on this map was compiled from land surveys registered in the Crown Lands Registry.

Since the Registry does not contain information on all land ownership within the Province, the information depicted cannot be considered complete.

The boundary lines shown are intended to be used as an index to land titles issued by the Crown. The accuracy of the plot is not sufficient for measurement purposes and does not guarantee title.

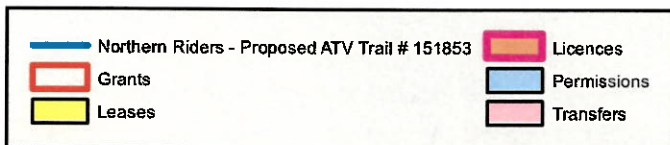
Users finding any errors or omissions on this map sheet are asked to contact the Crown Lands Inquiries Line by telephone at 1-833-891-3249 or by email at [CrownLandsInfo@gov.nl.ca](mailto:CrownLandsInfo@gov.nl.ca).

Some titles may not be plotted due to Crown Lands volumes missing from the Crown Lands registry or not plotted due to insufficient survey information.

The User hereby indemnifies and saves harmless the Minister, his officers, employees and agents from and against all claims, demands, liabilities, actions or cause of actions alleging any loss, injury, damages and matter (including claims or demands for any violation of copyright or intellectual property) arising out of any missing or incomplete Crown Land titles, and the Minister, his or her officers, employees and agents shall not be liable for any loss of profits or contracts or any other loss of any kind as a result.

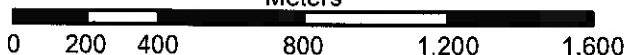
For inquiries please contact the Crown Lands Inquiries Line by telephone at 1-833-891-3249 or by email at [CrownLandsInfo@gov.nl.ca](mailto:CrownLandsInfo@gov.nl.ca). Or visit the nearest Regional Lands Office; [http://www.flr.gov.nl.ca/department/contact\\_land.html](http://www.flr.gov.nl.ca/department/contact_land.html)

Author: J Bannister  
Date: 12/23/2019

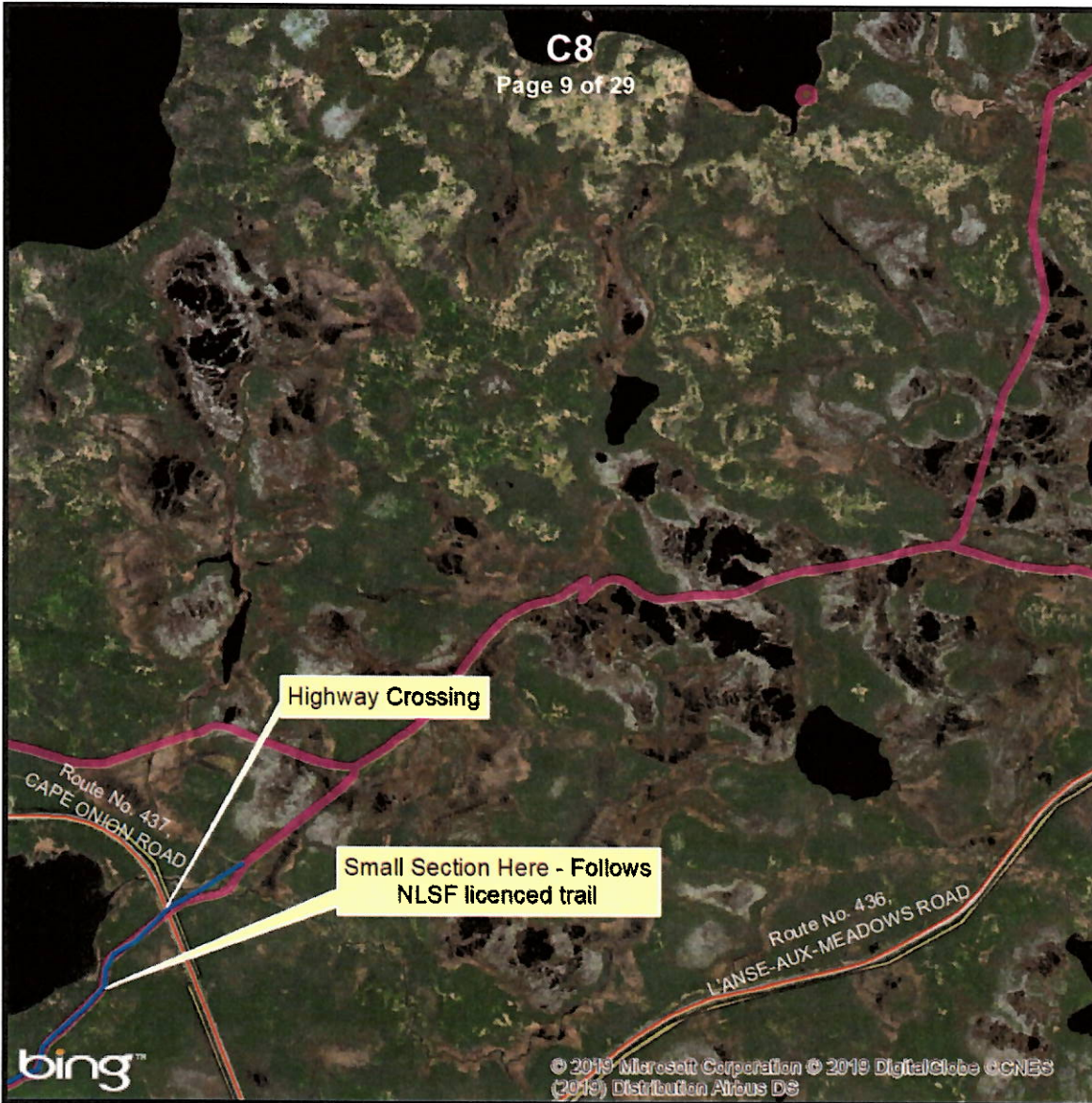


1:20,000

Meters



# Government of Newfoundland & Labrador Department of Fisheries & Land Resources Crown Lands Administration Division



## NOTE TO USERS

The information on this map was compiled from land surveys registered in the Crown Lands Registry.

Since the Registry does not contain information on all land ownership within the Province, the information depicted cannot be considered complete.

The boundary lines shown are intended to be used as an index to land titles issued by the Crown. The accuracy of the plot is not sufficient for measurement purposes and does not guarantee title.

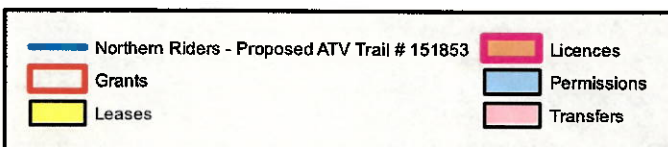
Users finding any errors or omissions on this map sheet are asked to contact the Crown Lands Inquiries Line by telephone at 1-833-891-3249 or by email at [CrownLandsInfo@gov.nl.ca](mailto:CrownLandsInfo@gov.nl.ca).

Some titles may not be plotted due to Crown Lands volumes missing from the Crown Lands registry or not plotted due to insufficient survey information.

The User hereby indemnifies and saves harmless the Minister, his officers, employees and agents from and against all claims, demands, liabilities, actions or cause of actions alleging any loss, injury, damages and matter (including claims or demands for any violation of copyright or intellectual property) arising out of any missing or incomplete Crown Land titles, and the Minister, his or her officers, employees and agents shall not be liable for any loss of profits or contracts or any other loss of any kind as a result.

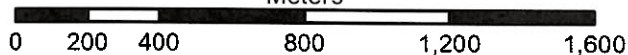
For inquiries please contact the Crown Lands Inquiries Line by telephone at 1-833-891-3249 or by email at [CrownLandsInfo@gov.nl.ca](mailto:CrownLandsInfo@gov.nl.ca). Or visit the nearest Regional Lands Office; [http://www.flr.gov.nl.ca/departement/contact\\_land.html](http://www.flr.gov.nl.ca/departement/contact_land.html)

Author: J Bannister  
Date: 12/23/2019

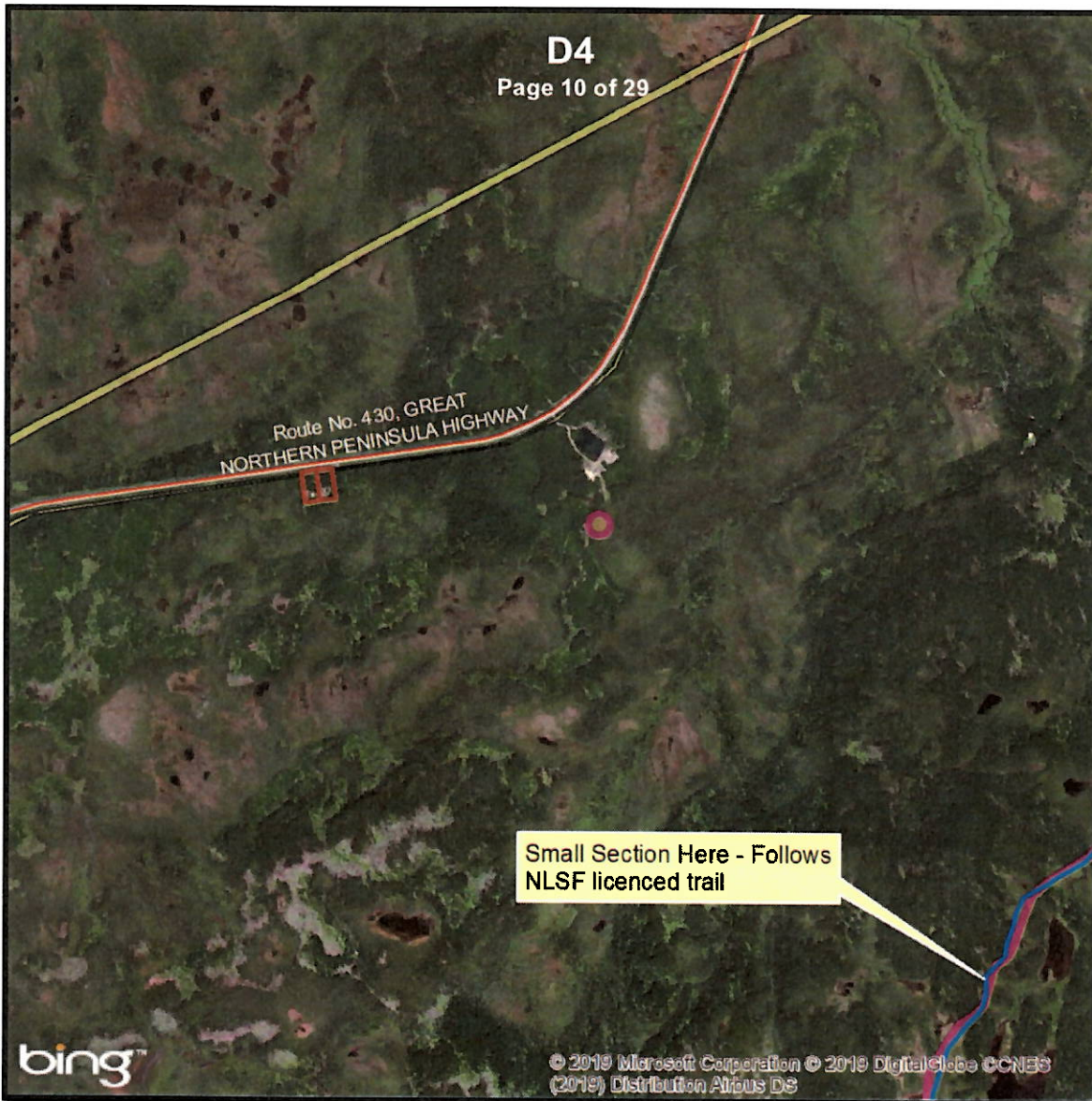


1:20,000

Meters



# Government of Newfoundland & Labrador Department of Fisheries & Land Resources Crown Lands Administration Division



## NOTE TO USERS

The information on this map was compiled from land surveys registered in the Crown Lands Registry.

Since the Registry does not contain information on all land ownership within the Province, the information depicted cannot be considered complete.

The boundary lines shown are intended to be used as an index to land titles issued by the Crown. The accuracy of the plot is not sufficient for measurement purposes and does not guarantee title.

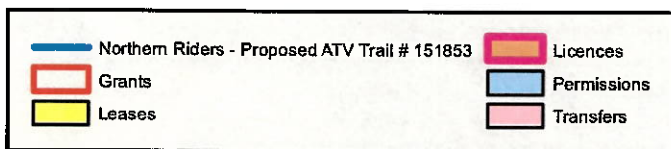
Users finding any errors or omissions on this map sheet are asked to contact the Crown Lands Inquiries Line by telephone at 1-833-891-3249 or by email at [CrownLandsInfo@gov.nl.ca](mailto:CrownLandsInfo@gov.nl.ca).

Some titles may not be plotted due to Crown Lands volumes missing from the Crown Lands registry or not plotted due to insufficient survey information.

The User hereby indemnifies and saves harmless the Minister, his officers, employees and agents from and against all claims, demands, liabilities, actions or cause of actions alleging any loss, injury, damages and matter (including claims or demands for any violation of copyright or intellectual property) arising out of any missing or incomplete Crown Land titles, and the Minister, his or her officers, employees and agents shall not be liable for any loss of profits or contracts or any other loss of any kind as a result.

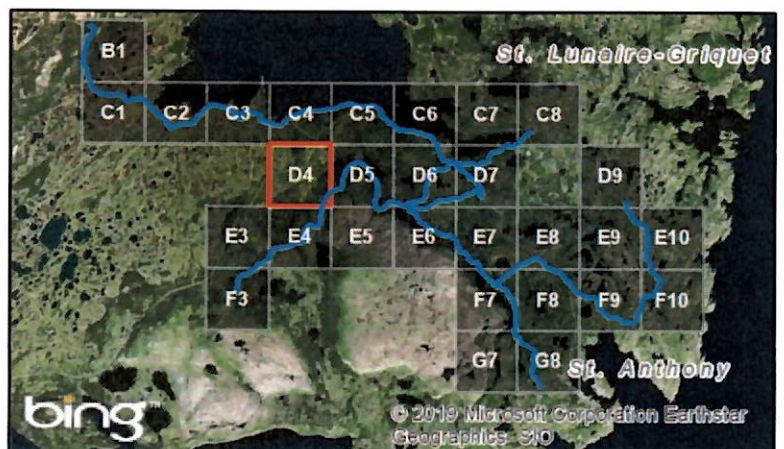
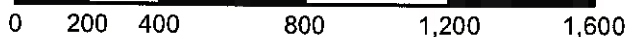
For inquiries please contact the Crown Lands Inquiries Line by telephone at 1-833-891-3249 or by email at [CrownLandsInfo@gov.nl.ca](mailto:CrownLandsInfo@gov.nl.ca). Or visit the nearest Regional Lands Office; [http://www.flr.gov.nl.ca/departement/contact\\_lands.html](http://www.flr.gov.nl.ca/departement/contact_lands.html)

Author: J Bannister  
Date: 12/23/2019



1:20,000

Meters



# Government of Newfoundland & Labrador Department of Fisheries & Land Resources Crown Lands Administration Division



## NOTE TO USERS

The information on this map was compiled from land surveys registered in the Crown Lands Registry.

Since the Registry does not contain information on all land ownership within the Province, the information depicted cannot be considered complete.

The boundary lines shown are intended to be used as an index to land titles issued by the Crown. The accuracy of the plot is not sufficient for measurement purposes and does not guarantee title.

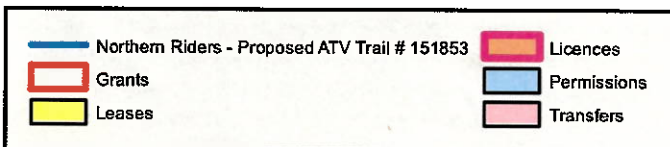
Users finding any errors or omissions on this map sheet are asked to contact the Crown Lands Inquiries Line by telephone at 1-833-891-3249 or by email at [CrownLandsInfo@gov.nl.ca](mailto:CrownLandsInfo@gov.nl.ca).

Some titles may not be plotted due to Crown Lands volumes missing from the Crown Lands registry or not plotted due to insufficient survey information.

The User hereby indemnifies and saves harmless the Minister, his officers, employees and agents from and against all claims, demands, liabilities, actions or cause of actions alleging any loss, injury, damages and matter (including claims or demands for any violation of copyright or intellectual property) arising out of any missing or incomplete Crown Land titles, and the Minister, his or her officers, employees and agents shall not be liable for any loss of profits or contracts or any other loss of any kind as a result.

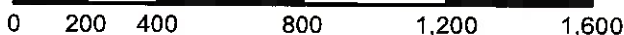
For inquiries please contact the Crown Lands Inquiries Line by telephone at 1-833-891-3249 or by email at [CrownLandsInfo@gov.nl.ca](mailto:CrownLandsInfo@gov.nl.ca). Or visit the nearest Regional Lands Office; [http://www.flr.gov.nl.ca/departement/contact\\_land.html](http://www.flr.gov.nl.ca/departement/contact_land.html)

Author: J Bannister  
Date: 12/23/2019

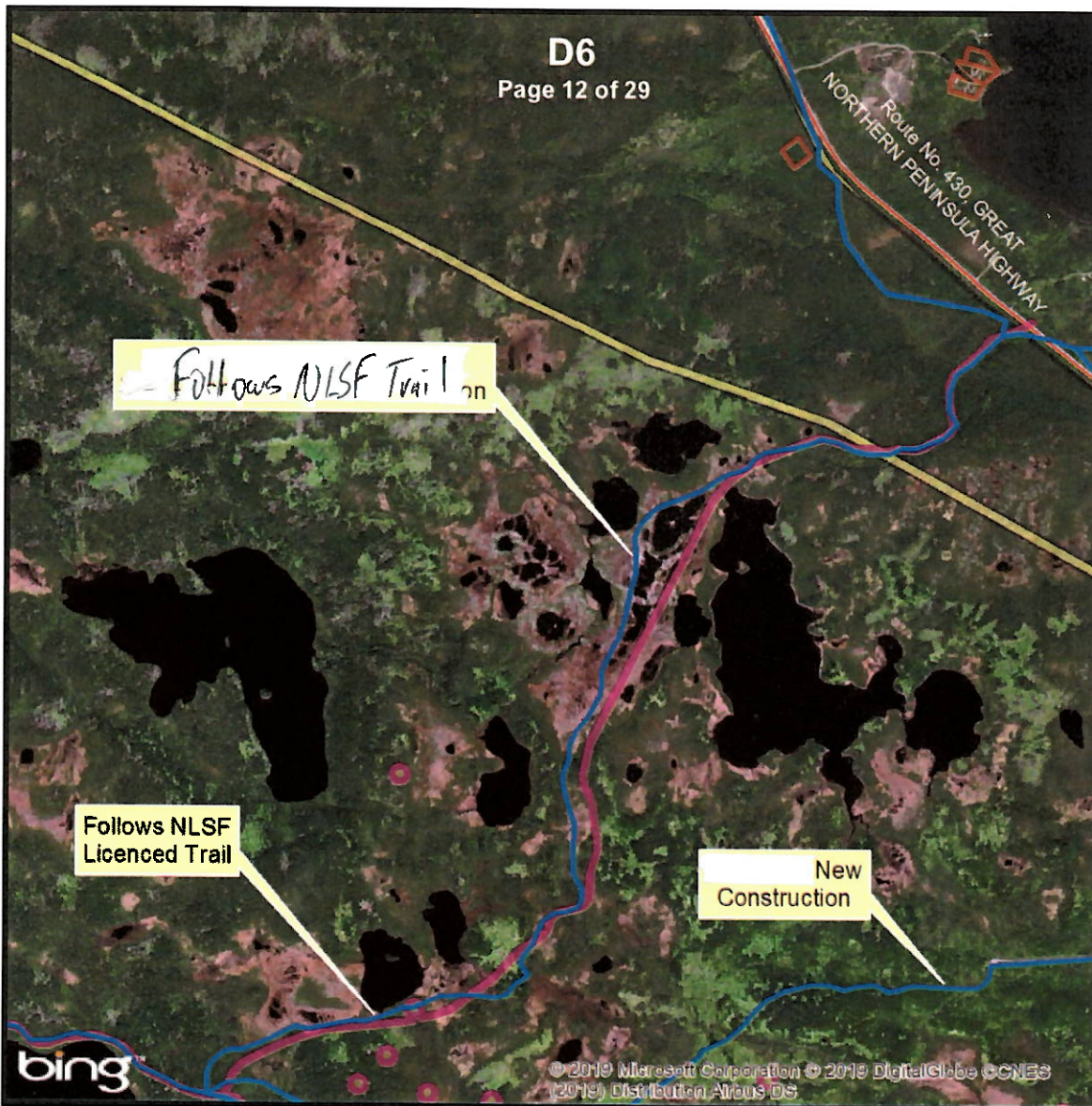


1:20,000

Meters



# Government of Newfoundland & Labrador Department of Fisheries & Land Resources Crown Lands Administration Division



## NOTE TO USERS

The information on this map was compiled from land surveys registered in the Crown Lands Registry.

Since the Registry does not contain information on all land ownership within the Province, the information depicted cannot be considered complete.

The boundary lines shown are intended to be used as an index to land titles issued by the Crown. The accuracy of the plot is not sufficient for measurement purposes and does not guarantee title.

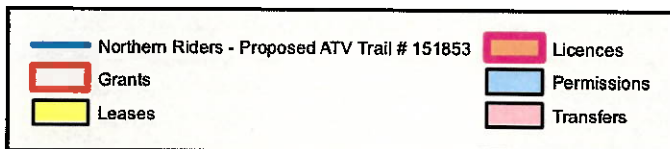
Users finding any errors or omissions on this map sheet are asked to contact the Crown Lands Inquiries Line by telephone at 1-833-891-3249 or by email at [CrownLandsInfo@gov.nl.ca](mailto:CrownLandsInfo@gov.nl.ca).

Some titles may not be plotted due to Crown Lands volumes missing from the Crown Lands registry or not plotted due to insufficient survey information.

The User hereby indemnifies and saves harmless the Minister, his officers, employees and agents from and against all claims, demands, liabilities, actions or cause of actions alleging any loss, injury, damages and matter (including claims or demands for any violation of copyright or intellectual property) arising out of any missing or incomplete Crown Land titles, and the Minister, his or her officers, employees and agents shall not be liable for any loss of profits or contracts or any other loss of any kind as a result.

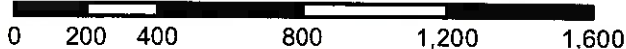
For inquiries please contact the Crown Lands Inquiries Line by telephone at 1-833-891-3249 or by email at [CrownLandsInfo@gov.nl.ca](mailto:CrownLandsInfo@gov.nl.ca). Or visit the nearest Regional Lands Office; [http://www.flr.gov.nl.ca/departement/contact\\_land.html](http://www.flr.gov.nl.ca/departement/contact_land.html)

Author: J Bannister  
Date: 12/23/2019



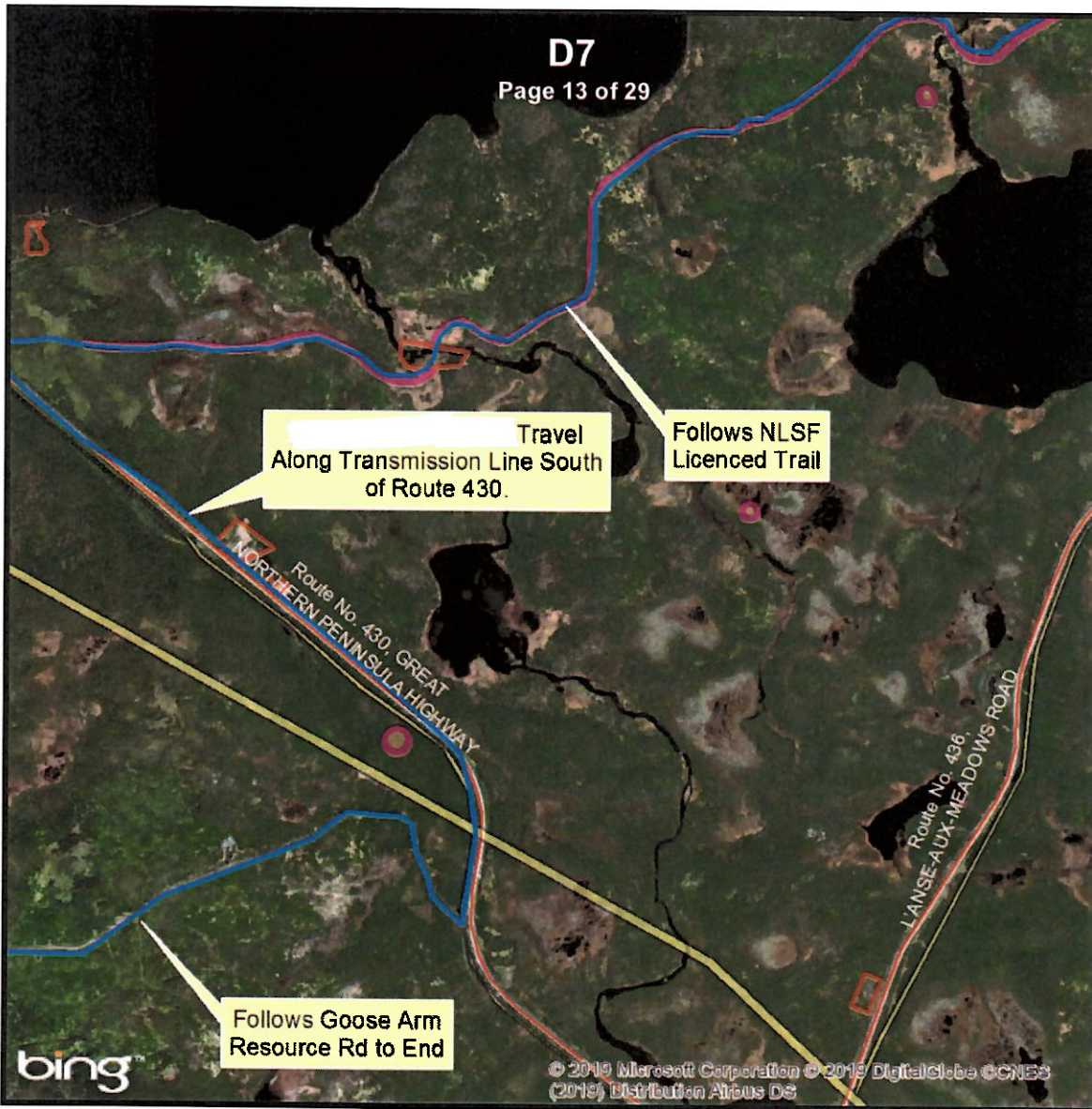
1:20,000

Meters





# Government of Newfoundland & Labrador Department of Fisheries & Land Resources Crown Lands Administration Division



## NOTE TO USERS

The information on this map was compiled from land surveys registered in the Crown Lands Registry.

Since the Registry does not contain information on all land ownership within the Province, the information depicted cannot be considered complete.

The boundary lines shown are intended to be used as an index to land titles issued by the Crown. The accuracy of the plot is not sufficient for measurement purposes and does not guarantee title.

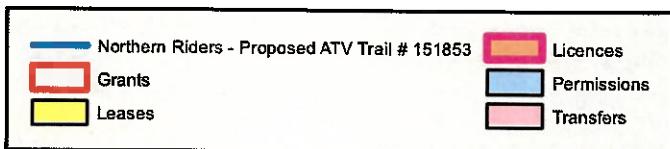
Users finding any errors or omissions on this map sheet are asked to contact the Crown Lands Inquiries Line by telephone at 1-833-891-3249 or by email at [CrownLandsInfo@gov.nl.ca](mailto:CrownLandsInfo@gov.nl.ca).

Some titles may not be plotted due to Crown Lands volumes missing from the Crown Lands registry or not plotted due to insufficient survey information.

The User hereby indemnifies and saves harmless the Minister, his officers, employees and agents from and against all claims, demands, liabilities, actions or cause of actions alleging any loss, injury, damages and matter (including claims or demands for any violation of copyright or intellectual property) arising out of any missing or incomplete Crown Land titles, and the Minister, his or her officers, employees and agents shall not be liable for any loss of profits or contracts or any other loss of any kind as a result.

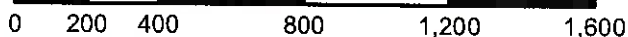
For inquiries please contact the Crown Lands Inquiries Line by telephone at 1-833-891-3249 or by email at [CrownLandsInfo@gov.nl.ca](mailto:CrownLandsInfo@gov.nl.ca). Or visit the nearest Regional Lands Office; [http://www.flr.gov.nl.ca/department/contact\\_land.html](http://www.flr.gov.nl.ca/department/contact_land.html)

Author: J Bannister  
Date: 12/23/2019

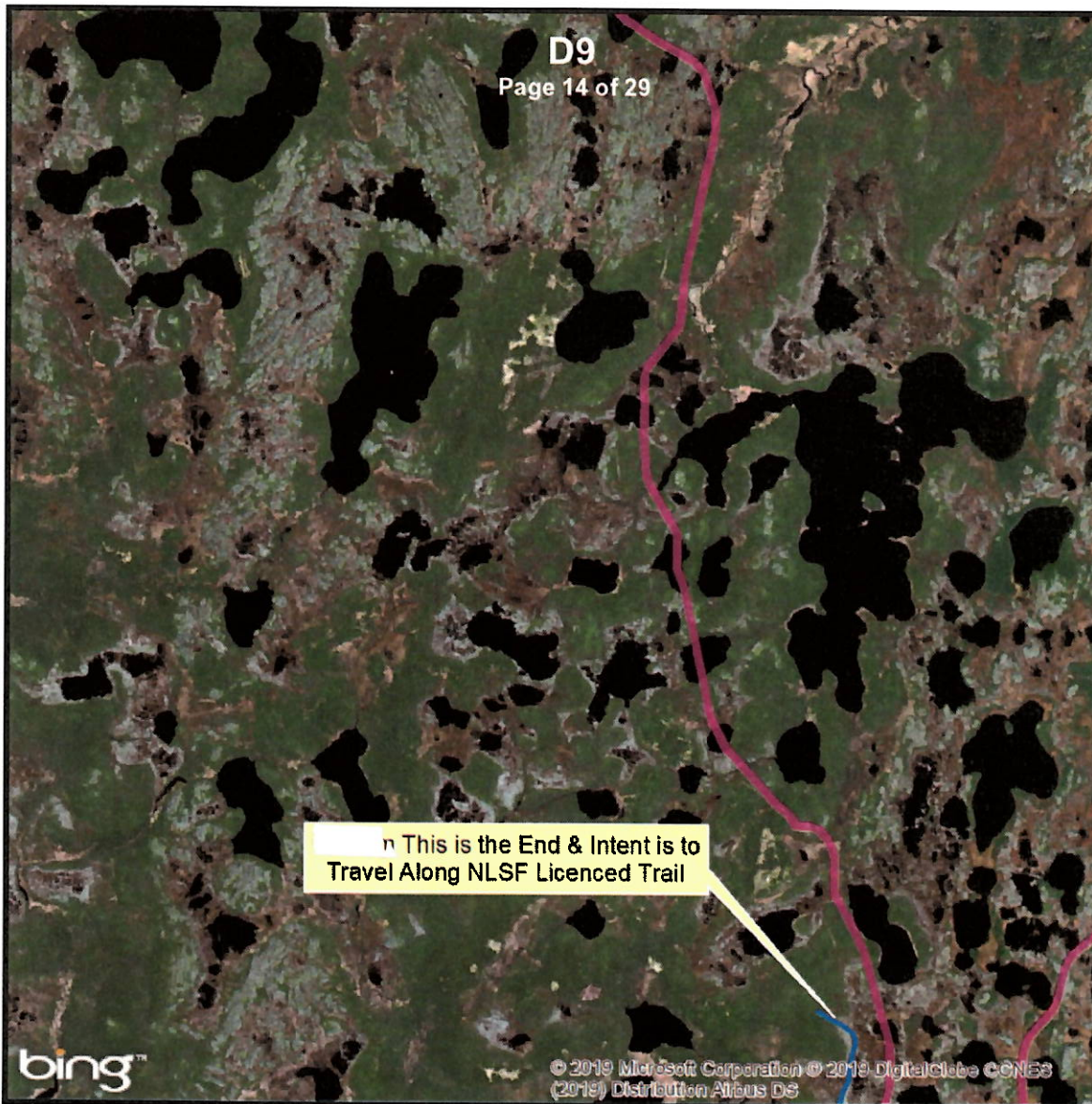


1:20,000

Meters



# Government of Newfoundland & Labrador Department of Fisheries & Land Resources Crown Lands Administration Division



## NOTE TO USERS

The information on this map was compiled from land surveys registered in the Crown Lands Registry.

Since the Registry does not contain information on all land ownership within the Province, the information depicted cannot be considered complete.

The boundary lines shown are intended to be used as an index to land titles issued by the Crown. The accuracy of the plot is not sufficient for measurement purposes and does not guarantee title.

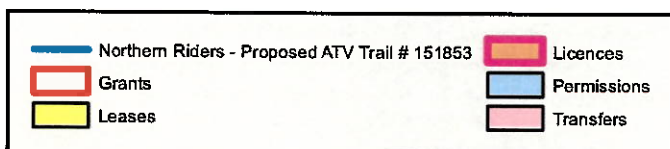
Users finding any errors or omissions on this map sheet are asked to contact the Crown Lands Inquiries Line by telephone at 1-833-891-3249 or by email at CrownLandsInfo@gov.nl.ca.

Some titles may not be plotted due to Crown Lands volumes missing from the Crown Lands registry or not plotted due to insufficient survey information.

The User hereby indemnifies and saves harmless the Minister, his officers, employees and agents from and against all claims, demands, liabilities, actions or cause of actions alleging any loss, injury, damages and matter (including claims or demands for any violation of copyright or intellectual property) arising out of any missing or incomplete Crown Land titles, and the Minister, his or her officers, employees and agents shall not be liable for any loss of profits or contracts or any other loss of any kind as a result.

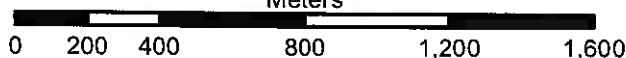
For inquiries please contact the Crown Lands Inquiries Line by telephone at 1-833-891-3249 or by email at CrownLandsInfo@gov.nl.ca. Or visit the nearest Regional Lands Office; [http://www.flr.gov.nl.ca/department/contact\\_lands.html](http://www.flr.gov.nl.ca/department/contact_lands.html)

Author: J Bannister  
Date 12/23/2019

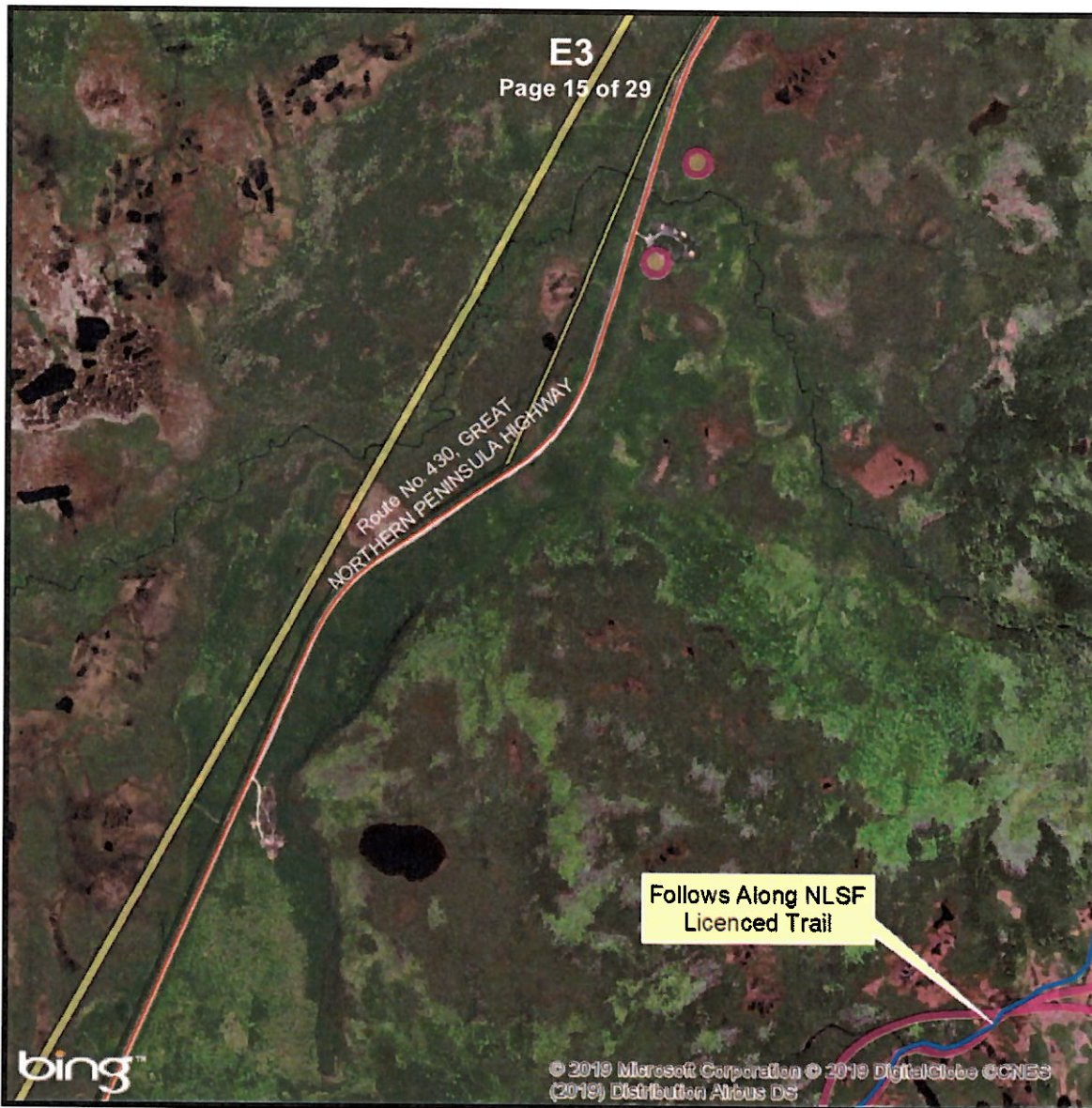


1:20,000

Meters



# Government of Newfoundland & Labrador Department of Fisheries & Land Resources Crown Lands Administration Division



## NOTE TO USERS

The information on this map was compiled from land surveys registered in the Crown Lands Registry.

Since the Registry does not contain information on all land ownership within the Province, the information depicted cannot be considered complete.

The boundary lines shown are intended to be used as an index to land titles issued by the Crown. The accuracy of the plot is not sufficient for measurement purposes and does not guarantee title.

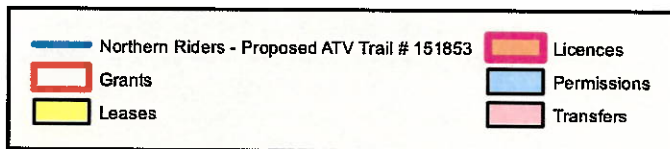
Users finding any errors or omissions on this map sheet are asked to contact the Crown Lands Inquiries Line by telephone at 1-833-891-3249 or by email at [CrownLandsInfo@gov.nl.ca](mailto:CrownLandsInfo@gov.nl.ca).

Some titles may not be plotted due to Crown Lands volumes missing from the Crown Lands registry or not plotted due to insufficient survey information.

The User hereby indemnifies and saves harmless the Minister, his officers, employees and agents from and against all claims, demands, liabilities, actions or cause of actions alleging any loss, injury, damages and matter (including claims or demands for any violation of copyright or intellectual property) arising out of any missing or incomplete Crown Land titles, and the Minister, his or her officers, employees and agents shall not be liable for any loss of profits or contracts or any other loss of any kind as a result.

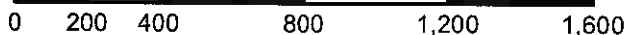
For inquiries please contact the Crown Lands Inquiries Line by telephone at 1-833-891-3249 or by email at [CrownLandsInfo@gov.nl.ca](mailto:CrownLandsInfo@gov.nl.ca). Or visit the nearest Regional Lands Office; [http://www.flr.gov.nl.ca/departement/contact\\_land.html](http://www.flr.gov.nl.ca/departement/contact_land.html)

Author: J Bannister  
Date: 12/23/2019

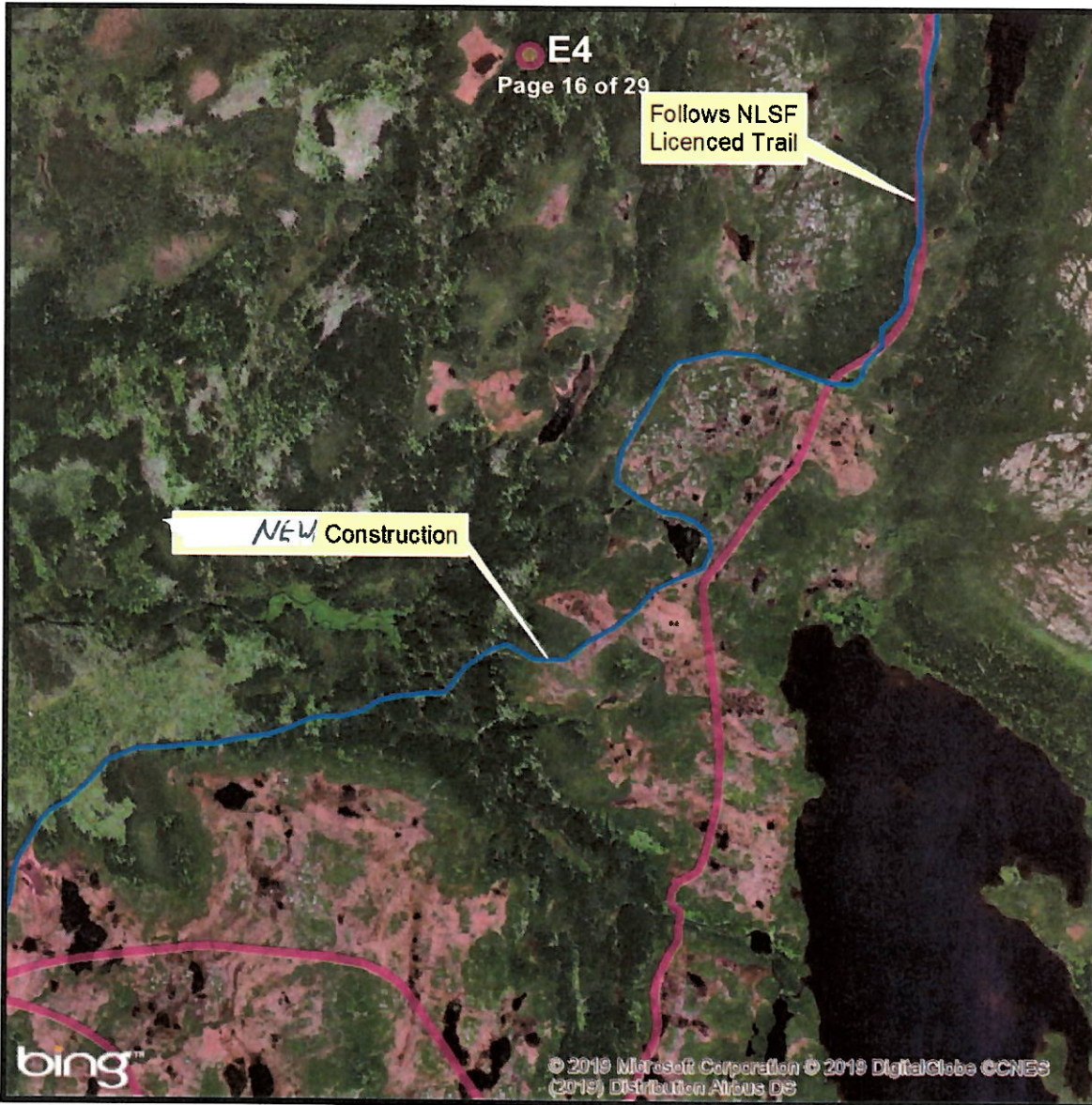


1:20,000

Meters



# Government of Newfoundland & Labrador Department of Fisheries & Land Resources Crown Lands Administration Division



## NOTE TO USERS

The information on this map was compiled from land surveys registered in the Crown Lands Registry.

Since the Registry does not contain information on all land ownership within the Province, the information depicted cannot be considered complete.

The boundary lines shown are intended to be used as an index to land titles issued by the Crown. The accuracy of the plot is not sufficient for measurement purposes and does not guarantee title.

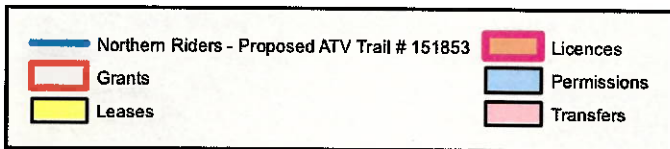
Users finding any errors or omissions on this map sheet are asked to contact the Crown Lands Inquiries Line by telephone at 1-833-891-3249 or by email at [CrownLandsInfo@gov.nl.ca](mailto:CrownLandsInfo@gov.nl.ca).

Some titles may not be plotted due to Crown Lands volumes missing from the Crown Lands registry or not plotted due to insufficient survey information.

The User hereby indemnifies and saves harmless the Minister, his officers, employees and agents from and against all claims, demands, liabilities, actions or cause of actions alleging any loss, injury, damages and matter (including claims or demands for any violation of copyright or intellectual property) arising out of any missing or incomplete Crown Land titles, and the Minister, his or her officers, employees and agents shall not be liable for any loss of profits or contracts or any other loss of any kind as a result.

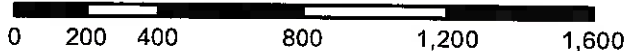
For inquiries please contact the Crown Lands Inquiries Line by telephone at 1-833-891-3249 or by email at [CrownLandsInfo@gov.nl.ca](mailto:CrownLandsInfo@gov.nl.ca). Or visit the nearest Regional Lands Office; [http://www.flr.gov.nl.ca/departement/contact\\_lands.html](http://www.flr.gov.nl.ca/departement/contact_lands.html)

Author: J Bannister  
Date: 12/23/2019

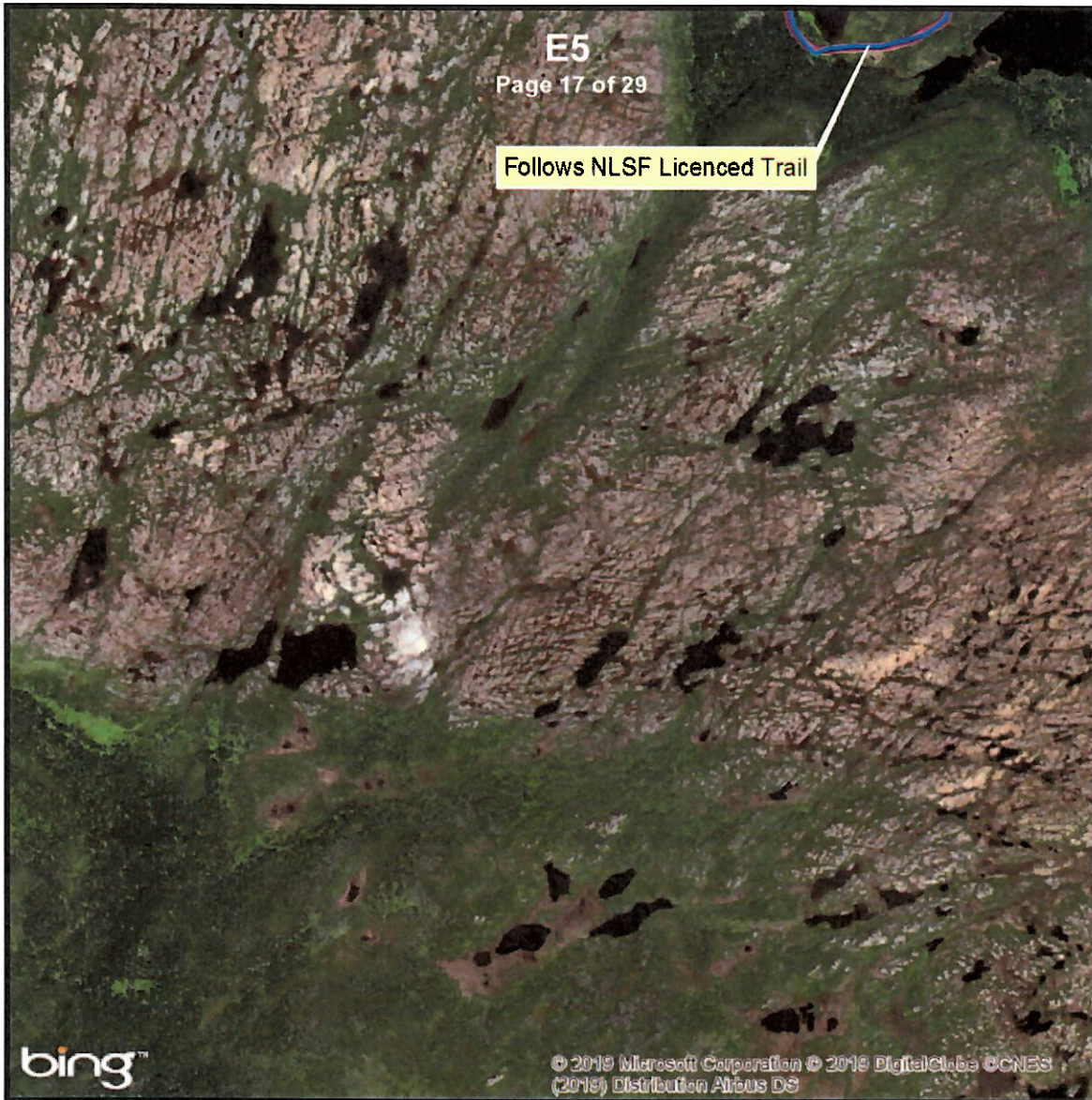


1:20,000

Meters



# Government of Newfoundland & Labrador Department of Fisheries & Land Resources Crown Lands Administration Division



## NOTE TO USERS

The information on this map was compiled from land surveys registered in the Crown Lands Registry.

Since the Registry does not contain information on all land ownership within the Province, the information depicted cannot be considered complete.

The boundary lines shown are intended to be used as an index to land titles issued by the Crown. The accuracy of the plot is not sufficient for measurement purposes and does not guarantee title.

Users finding any errors or omissions on this map sheet are asked to contact the Crown Lands Inquiries Line by telephone at 1-833-891-3249 or by email at [CrownLandsInfo@gov.nl.ca](mailto:CrownLandsInfo@gov.nl.ca).

Some titles may not be plotted due to Crown Lands volumes missing from the Crown Lands registry or not plotted due to insufficient survey information.

The User hereby indemnifies and saves harmless the Minister, his officers, employees and agents from and against all claims, demands, liabilities, actions or cause of actions alleging any loss, injury, damages and matter (including claims or demands for any violation of copyright or intellectual property) arising out of any missing or incomplete Crown Land titles, and the Minister, his or her officers, employees and agents shall not be liable for any loss of profits or contracts or any other loss of any kind as a result.

For inquiries please contact the Crown Lands Inquiries Line by telephone at 1-833-891-3249 or by email at [CrownLandsInfo@gov.nl.ca](mailto:CrownLandsInfo@gov.nl.ca). Or visit the nearest Regional Lands Office; [http://www.flr.gov.nl.ca/departement/contact\\_lands.html](http://www.flr.gov.nl.ca/departement/contact_lands.html)

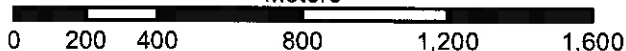
Author: J Bannister  
Date: 12/23/2019

	Northern Riders - Proposed ATV Trail # 151853		Licences
	Grants		Permissions
	Leases		Transfers



1:20,000

Meters



# Government of Newfoundland & Labrador Department of Fisheries & Land Resources Crown Lands Administration Division



## NOTE TO USERS

The information on this map was compiled from land surveys registered in the Crown Lands Registry.

Since the Registry does not contain information on all land ownership within the Province, the information depicted cannot be considered complete.

The boundary lines shown are intended to be used as an index to land titles issued by the Crown. The accuracy of the plot is not sufficient for measurement purposes and does not guarantee title.

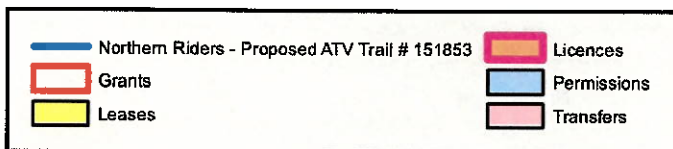
Users finding any errors or omissions on this map sheet are asked to contact the Crown Lands Inquiries Line by telephone at 1-833-891-3249 or by email at [CrownLandsInfo@gov.nl.ca](mailto:CrownLandsInfo@gov.nl.ca).

Some titles may not be plotted due to Crown Lands volumes missing from the Crown Lands registry or not plotted due to insufficient survey information.

The User hereby indemnifies and saves harmless the Minister, his officers, employees and agents from and against all claims, demands, liabilities, actions or cause of actions alleging any loss, injury, damages and matter (including claims or demands for any violation of copyright or intellectual property) arising out of any missing or incomplete Crown Land titles, and the Minister, his or her officers, employees and agents shall not be liable for any loss of profits or contracts or any other loss of any kind as a result.

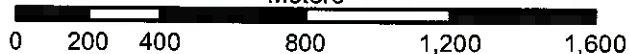
For inquiries please contact the Crown Lands Inquiries Line by telephone at 1-833-891-3249 or by email at [CrownLandsInfo@gov.nl.ca](mailto:CrownLandsInfo@gov.nl.ca). Or visit the nearest Regional Lands Office; [http://www.flr.gov.nl.ca/departement/contact\\_lands.html](http://www.flr.gov.nl.ca/departement/contact_lands.html)

Author: J Bannister  
Date: 12/23/2019

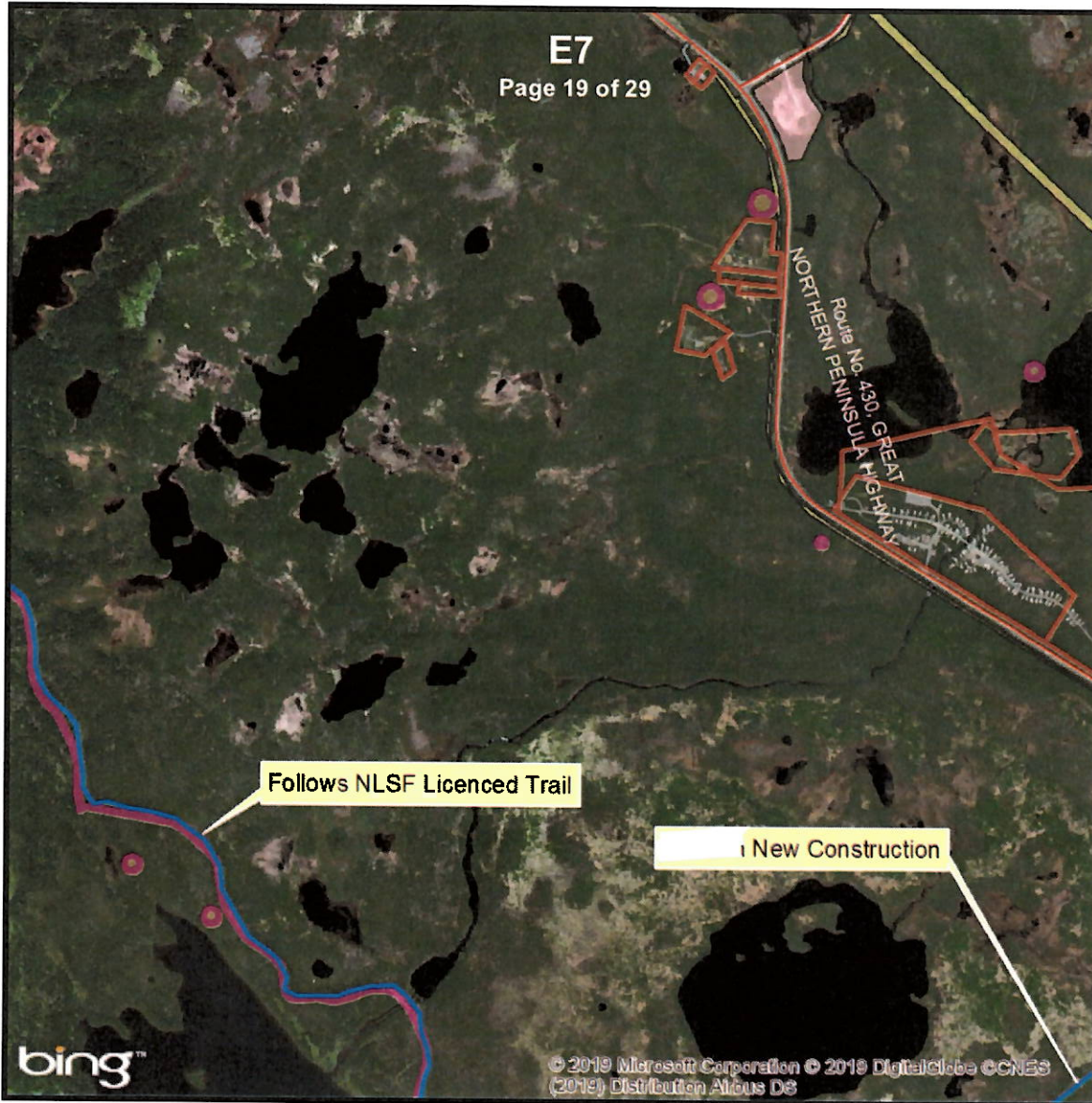


1:20,000

Meters



# Government of Newfoundland & Labrador Department of Fisheries & Land Resources Crown Lands Administration Division



## NOTE TO USERS

The information on this map was compiled from land surveys registered in the Crown Lands Registry.

Since the Registry does not contain information on all land ownership within the Province, the information depicted cannot be considered complete.

The boundary lines shown are intended to be used as an index to land titles issued by the Crown. The accuracy of the plot is not sufficient for measurement purposes and does not guarantee title.

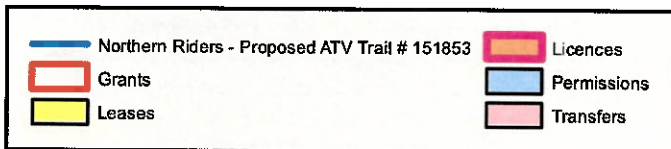
Users finding any errors or omissions on this map sheet are asked to contact the Crown Lands Inquiries Line by telephone at 1-833-891-3249 or by email at [CrownLandsInfo@gov.nl.ca](mailto:CrownLandsInfo@gov.nl.ca).

Some titles may not be plotted due to Crown Lands volumes missing from the Crown Lands registry or not plotted due to insufficient survey information.

The User hereby indemnifies and saves harmless the Minister, his officers, employees and agents from and against all claims, demands, liabilities, actions or cause of actions alleging any loss, injury, damages and matter (including claims or demands for any violation of copyright or intellectual property) arising out of any missing or incomplete Crown Land titles, and the Minister, his or her officers, employees and agents shall not be liable for any loss of profits or contracts or any other loss of any kind as a result.

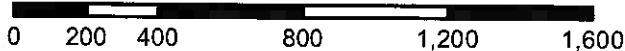
For inquiries please contact the Crown Lands Inquiries Line by telephone at 1-833-891-3249 or by email at [CrownLandsInfo@gov.nl.ca](mailto:CrownLandsInfo@gov.nl.ca). Or visit the nearest Regional Lands Office; [http://www.flr.gov.nl.ca/department/contact\\_lands.html](http://www.flr.gov.nl.ca/department/contact_lands.html)

Author: J Bannister  
Date: 12/23/2019

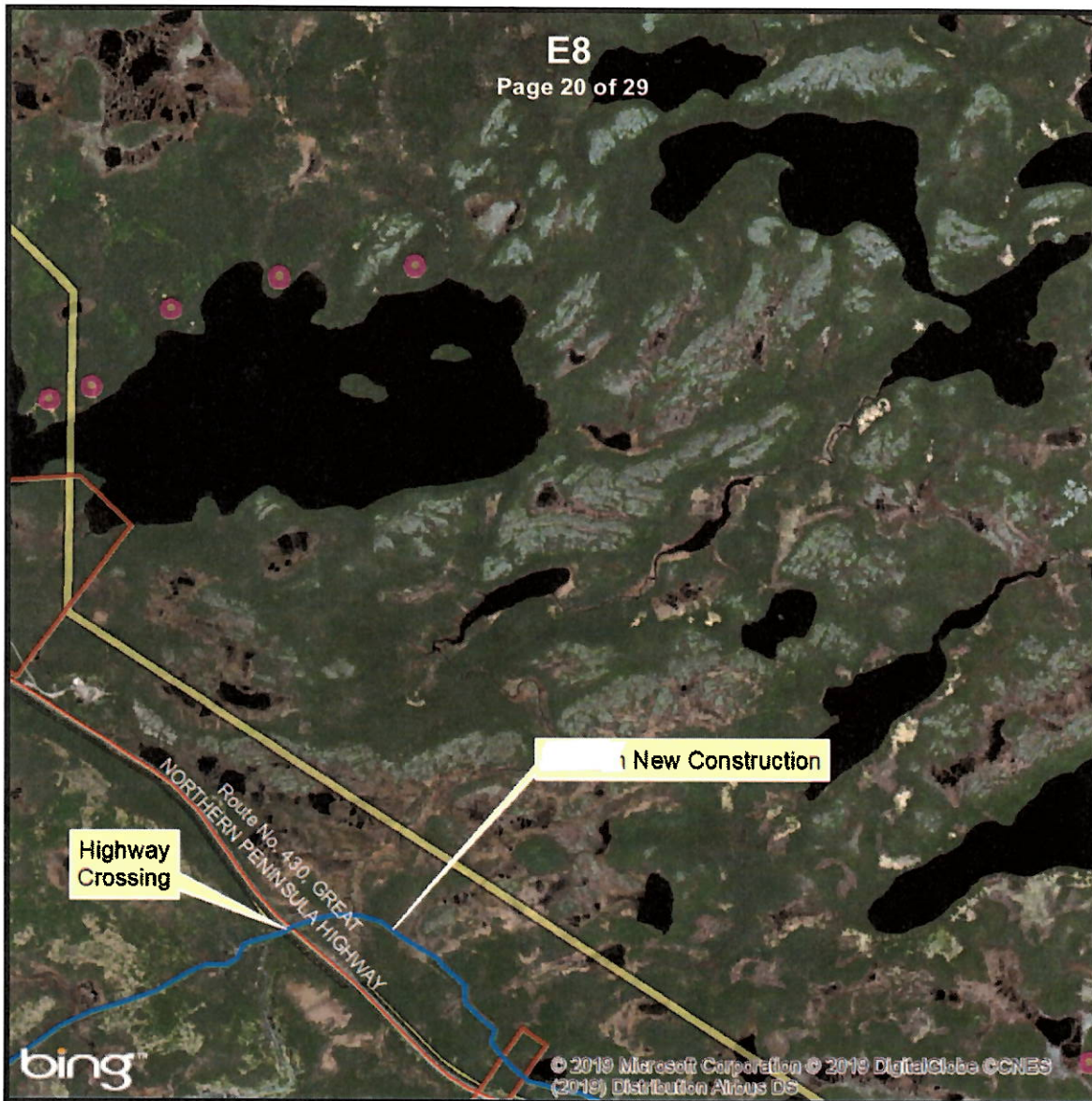


1:20,000

Meters



# Government of Newfoundland & Labrador Department of Fisheries & Land Resources Crown Lands Administration Division



## NOTE TO USERS

The information on this map was compiled from land surveys registered in the Crown Lands Registry.

Since the Registry does not contain information on all land ownership within the Province, the information depicted cannot be considered complete.

The boundary lines shown are intended to be used as an index to land titles issued by the Crown. The accuracy of the plot is not sufficient for measurement purposes and does not guarantee title.

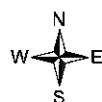
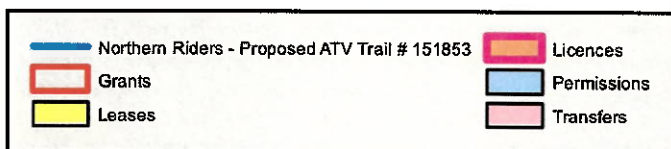
Users finding any errors or omissions on this map sheet are asked to contact the Crown Lands Inquiries Line by telephone at 1-833-891-3249 or by email at [CrownLandsInfo@gov.nl.ca](mailto:CrownLandsInfo@gov.nl.ca).

Some titles may not be plotted due to Crown Lands volumes missing from the Crown Lands registry or not plotted due to insufficient survey information.

The User hereby indemnifies and saves harmless the Minister, his officers, employees and agents from and against all claims, demands, liabilities, actions or cause of actions alleging any loss, injury, damages and matter (including claims or demands for any violation of copyright or intellectual property) arising out of any missing or incomplete Crown Land titles, and the Minister, his or her officers, employees and agents shall not be liable for any loss of profits or contracts or any other loss of any kind as a result.

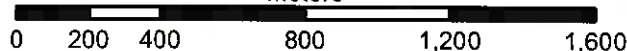
For inquiries please contact the Crown Lands Inquiries Line by telephone at 1-833-891-3249 or by email at [CrownLandsInfo@gov.nl.ca](mailto:CrownLandsInfo@gov.nl.ca). Or visit the nearest Regional Lands Office; [http://www.flr.gov.nl.ca/departement/contact\\_land.html](http://www.flr.gov.nl.ca/departement/contact_land.html)

Author: J Bannister  
Date: 12/23/2019



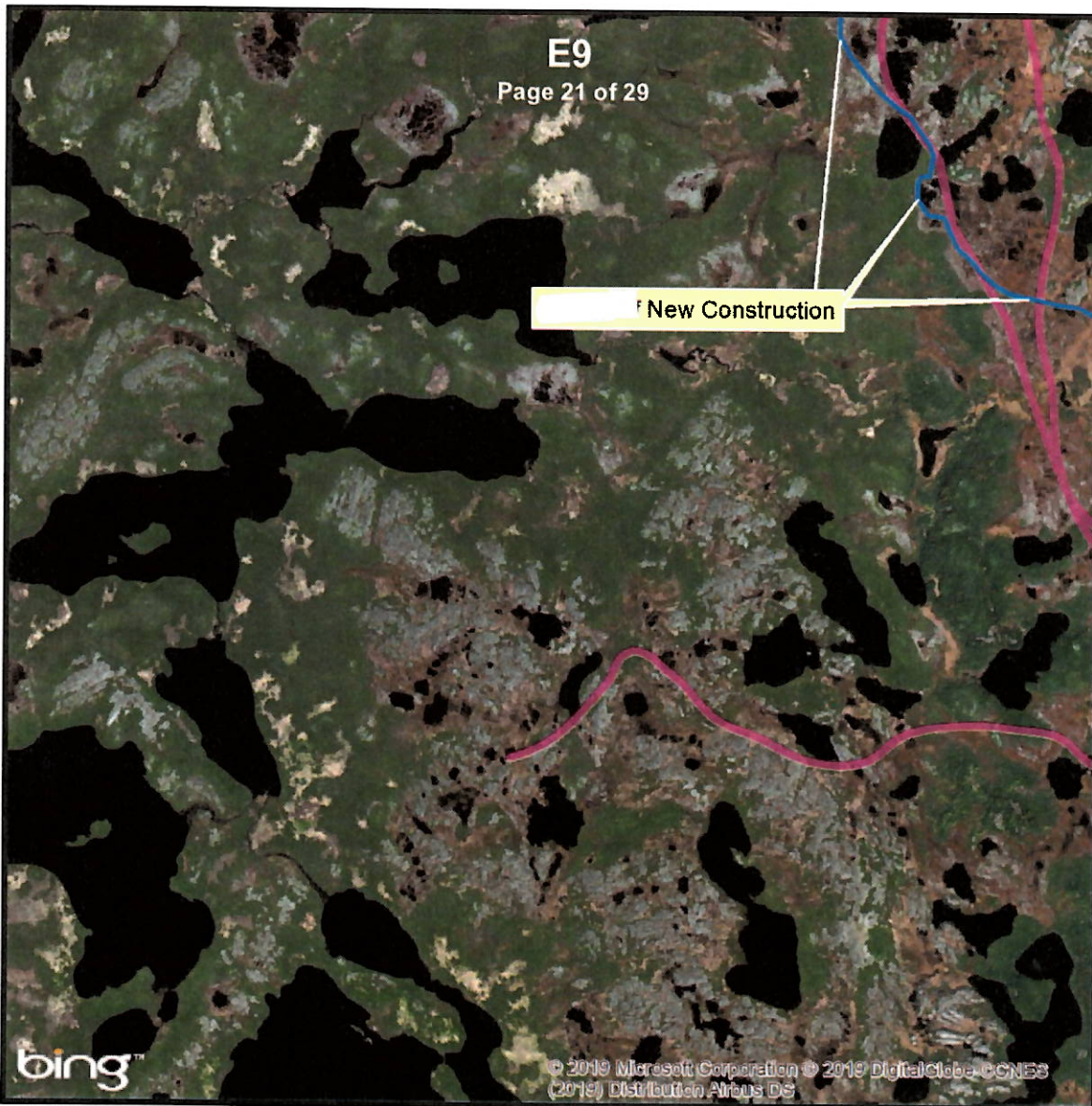
1:20,000

Meters





# Government of Newfoundland & Labrador Department of Fisheries & Land Resources Crown Lands Administration Division



## NOTE TO USERS

The information on this map was compiled from land surveys registered in the Crown Lands Registry.

Since the Registry does not contain information on all land ownership within the Province, the information depicted cannot be considered complete.

The boundary lines shown are intended to be used as an index to land titles issued by the Crown. The accuracy of the plot is not sufficient for measurement purposes and does not guarantee title.

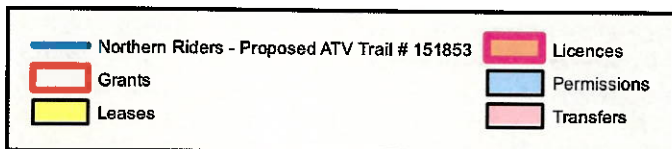
Users finding any errors or omissions on this map sheet are asked to contact the Crown Lands Inquiries Line by telephone at 1-833-891-3249 or by email at [CrownLandsInfo@gov.nl.ca](mailto:CrownLandsInfo@gov.nl.ca).

Some titles may not be plotted due to Crown Lands volumes missing from the Crown Lands registry or not plotted due to insufficient survey information.

The User hereby indemnifies and saves harmless the Minister, his officers, employees and agents from and against all claims, demands, liabilities, actions or cause of actions alleging any loss, injury, damages and matter (including claims or demands for any violation of copyright or intellectual property) arising out of any missing or incomplete Crown Land titles, and the Minister, his or her officers, employees and agents shall not be liable for any loss of profits or contracts or any other loss of any kind as a result.

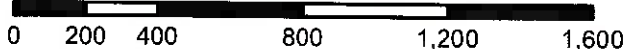
For inquiries please contact the Crown Lands Inquiries Line by telephone at 1-833-891-3249 or by email at [CrownLandsInfo@gov.nl.ca](mailto:CrownLandsInfo@gov.nl.ca). Or visit the nearest Regional Lands Office; [http://www.flr.gov.nl.ca/departement/contact\\_lands.html](http://www.flr.gov.nl.ca/departement/contact_lands.html)

Author: J Bannister  
Date: 12/23/2019

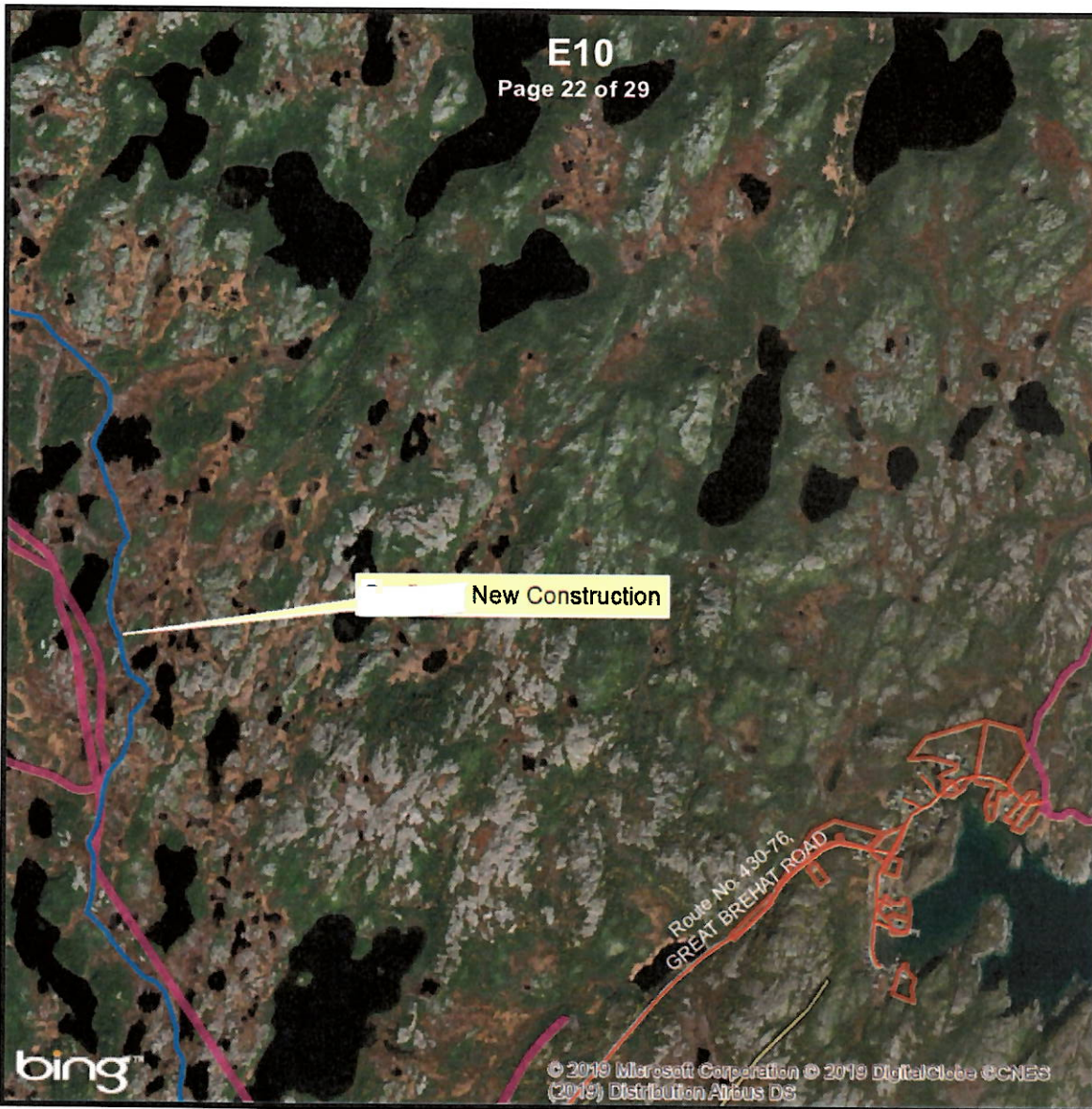


1:20,000

Meters



# Government of Newfoundland & Labrador Department of Fisheries & Land Resources Crown Lands Administration Division



## NOTE TO USERS

The information on this map was compiled from land surveys registered in the Crown Lands Registry.

Since the Registry does not contain information on all land ownership within the Province, the information depicted cannot be considered complete.

The boundary lines shown are intended to be used as an index to land titles issued by the Crown. The accuracy of the plot is not sufficient for measurement purposes and does not guarantee title.

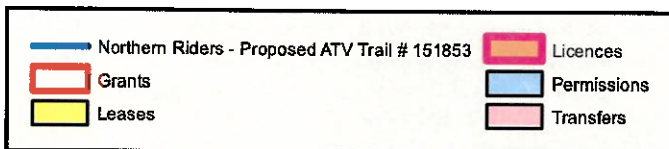
Users finding any errors or omissions on this map sheet are asked to contact the Crown Lands Inquiries Line by telephone at 1-833-891-3249 or by email at [CrownLandsInfo@gov.nl.ca](mailto:CrownLandsInfo@gov.nl.ca).

Some titles may not be plotted due to Crown Lands volumes missing from the Crown Lands registry or not plotted due to insufficient survey information.

The User hereby indemnifies and saves harmless the Minister, his officers, employees and agents from and against all claims, demands, liabilities, actions or cause of actions alleging any loss, injury, damages and matter (including claims or demands for any violation of copyright or intellectual property) arising out of any missing or incomplete Crown Land titles, and the Minister, his or her officers, employees and agents shall not be liable for any loss of profits or contracts or any other loss of any kind as a result.

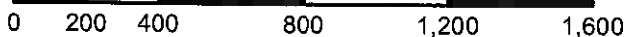
For inquiries please contact the Crown Lands Inquiries Line by telephone at 1-833-891-3249 or by email at [CrownLandsInfo@gov.nl.ca](mailto:CrownLandsInfo@gov.nl.ca). Or visit the nearest Regional Lands Office; [http://www.flr.gov.nl.ca/departement/contact\\_lands.html](http://www.flr.gov.nl.ca/departement/contact_lands.html)

Author: J Bannister  
Date: 12/23/2019

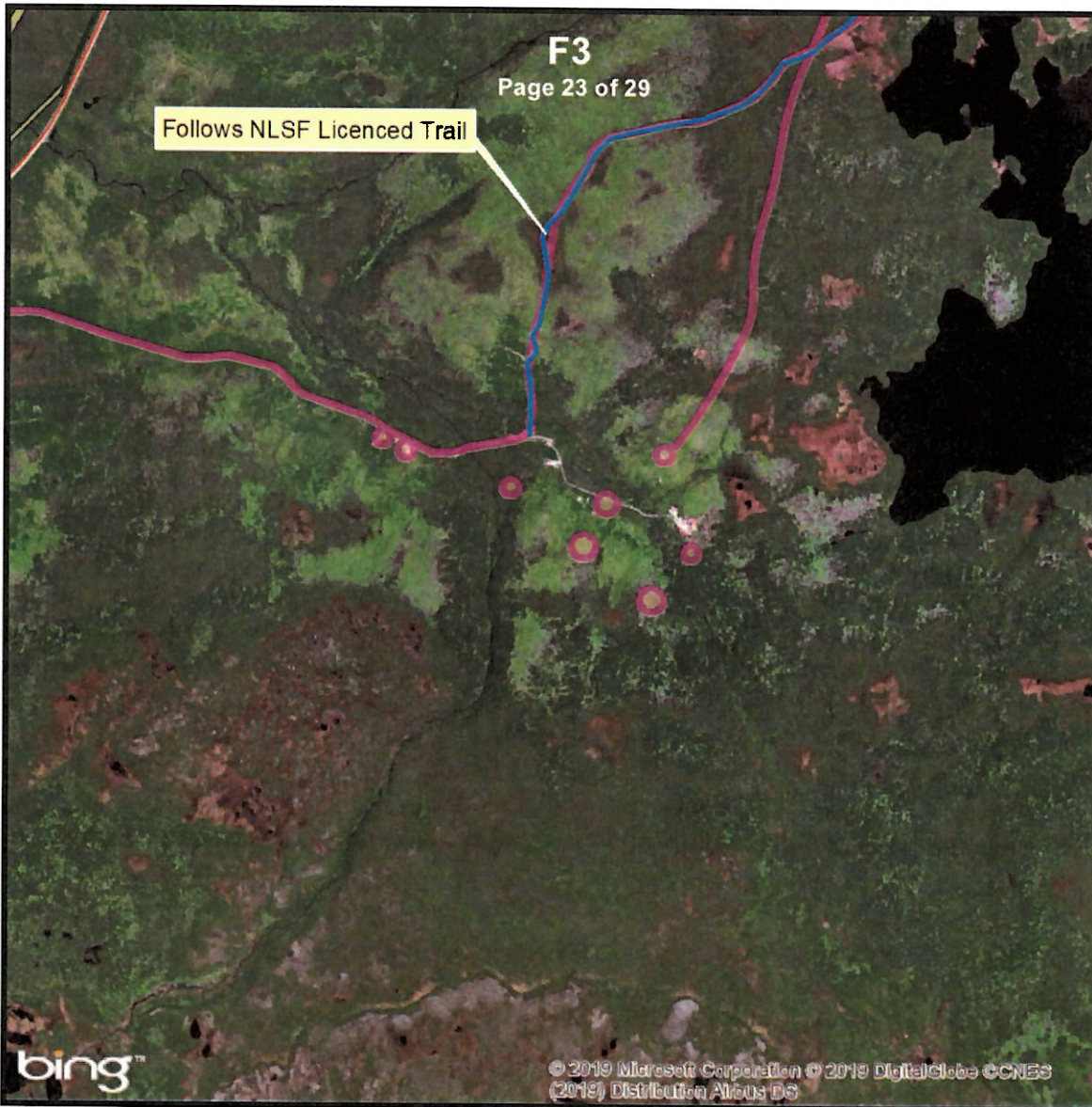


1:20,000

Meters



# Government of Newfoundland & Labrador Department of Fisheries & Land Resources Crown Lands Administration Division



## NOTE TO USERS

The information on this map was compiled from land surveys registered in the Crown Lands Registry.

Since the Registry does not contain information on all land ownership within the Province, the information depicted cannot be considered complete.

The boundary lines shown are intended to be used as an index to land titles issued by the Crown. The accuracy of the plot is not sufficient for measurement purposes and does not guarantee title.

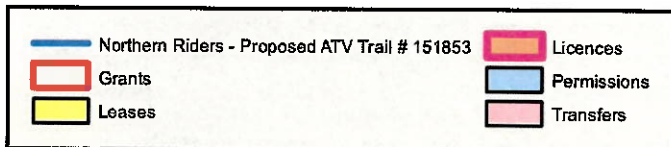
Users finding any errors or omissions on this map sheet are asked to contact the Crown Lands Inquiries Line by telephone at 1-833-891-3249 or by email at [CrownLandsInfo@gov.nl.ca](mailto:CrownLandsInfo@gov.nl.ca).

Some titles may not be plotted due to Crown Lands volumes missing from the Crown Lands registry or not plotted due to insufficient survey information.

The User hereby indemnifies and saves harmless the Minister, his officers, employees and agents from and against all claims, demands, liabilities, actions or cause of actions alleging any loss, injury, damages and matter (including claims or demands for any violation of copyright or intellectual property) arising out of any missing or incomplete Crown Land titles, and the Minister, his or her officers, employees and agents shall not be liable for any loss of profits or contracts or any other loss of any kind as a result.

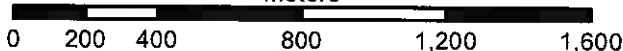
For inquiries please contact the Crown Lands Inquiries Line by telephone at 1-833-891-3249 or by email at [CrownLandsInfo@gov.nl.ca](mailto:CrownLandsInfo@gov.nl.ca). Or visit the nearest Regional Lands Office; [http://www.flr.gov.nl.ca/departement/contact\\_land.html](http://www.flr.gov.nl.ca/departement/contact_land.html)

Author: J Bannister  
Date: 12/23/2019

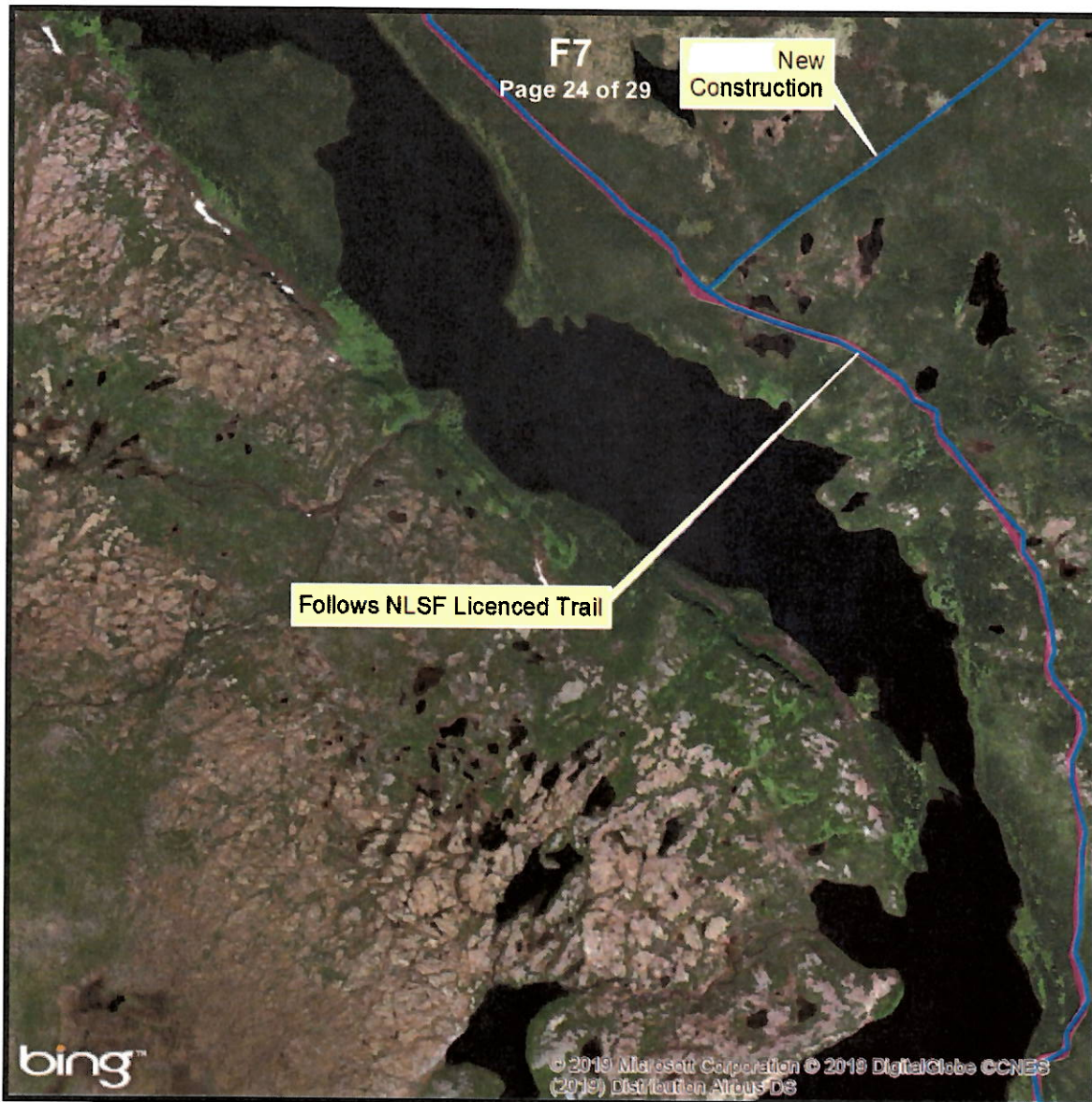


1:20,000

Meters



# Government of Newfoundland & Labrador Department of Fisheries & Land Resources Crown Lands Administration Division



## NOTE TO USERS

The information on this map was compiled from land surveys registered in the Crown Lands Registry.

Since the Registry does not contain information on all land ownership within the Province, the information depicted cannot be considered complete.

The boundary lines shown are intended to be used as an index to land titles issued by the Crown. The accuracy of the plot is not sufficient for measurement purposes and does not guarantee title.

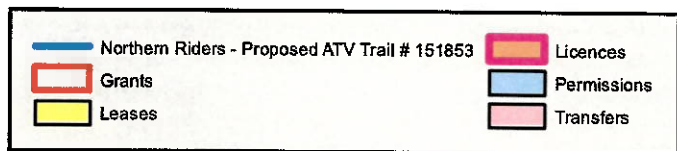
Users finding any errors or omissions on this map sheet are asked to contact the Crown Lands Inquiries Line by telephone at 1-833-891-3249 or by email at [CrownLandsInfo@gov.nl.ca](mailto:CrownLandsInfo@gov.nl.ca).

Some titles may not be plotted due to Crown Lands volumes missing from the Crown Lands registry or not plotted due to insufficient survey information.

The User hereby indemnifies and saves harmless the Minister, his officers, employees and agents from and against all claims, demands, liabilities, actions or cause of actions alleging any loss, injury, damages and matter (including claims or demands for any violation of copyright or intellectual property) arising out of any missing or incomplete Crown Land titles, and the Minister, his or her officers, employees and agents shall not be liable for any loss of profits or contracts or any other loss of any kind as a result.

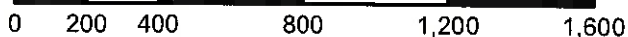
For inquiries please contact the Crown Lands Inquiries Line by telephone at 1-833-891-3249 or by email at [CrownLandsInfo@gov.nl.ca](mailto:CrownLandsInfo@gov.nl.ca). Or visit the nearest Regional Lands Office; [http://www.flr.gov.nl.ca/departement/contact\\_land.html](http://www.flr.gov.nl.ca/departement/contact_land.html)

Author: J Bannister  
Date 12/23/2019

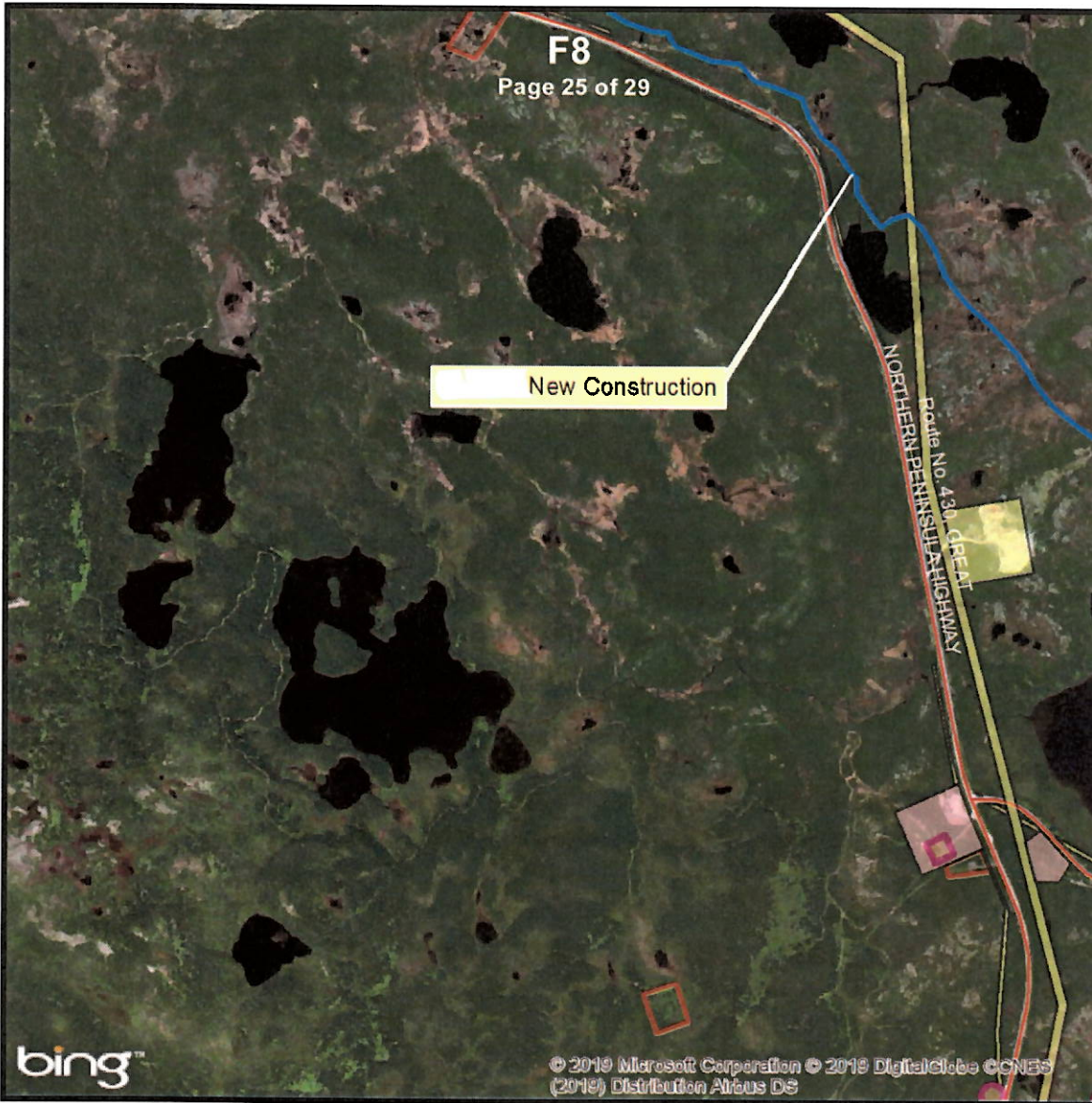


1:20,000

Meters



# Government of Newfoundland & Labrador Department of Fisheries & Land Resources Crown Lands Administration Division



## NOTE TO USERS

The information on this map was compiled from land surveys registered in the Crown Lands Registry.

Since the Registry does not contain information on all land ownership within the Province, the information depicted cannot be considered complete.

The boundary lines shown are intended to be used as an index to land titles issued by the Crown. The accuracy of the plot is not sufficient for measurement purposes and does not guarantee title.

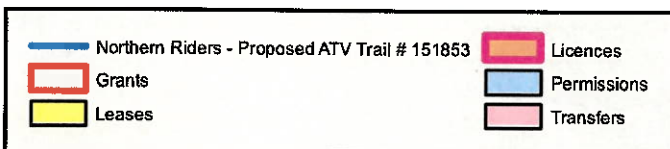
Users finding any errors or omissions on this map sheet are asked to contact the Crown Lands Inquiries Line by telephone at 1-833-891-3249 or by email at [CrownLandsInfo@gov.nl.ca](mailto:CrownLandsInfo@gov.nl.ca).

Some titles may not be plotted due to Crown Lands volumes missing from the Crown Lands registry or not plotted due to insufficient survey information.

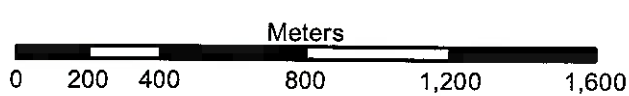
The User hereby indemnifies and saves harmless the Minister, his officers, employees and agents from and against all claims, demands, liabilities, actions or cause of actions alleging any loss, injury, damages and matter (including claims or demands for any violation of copyright or intellectual property) arising out of any missing or incomplete Crown Land titles, and the Minister, his or her officers, employees and agents shall not be liable for any loss of profits or contracts or any other loss of any kind as a result.

For inquiries please contact the Crown Lands Inquiries Line by telephone at 1-833-891-3249 or by email at [CrownLandsInfo@gov.nl.ca](mailto:CrownLandsInfo@gov.nl.ca). Or visit the nearest Regional Lands Office; [http://www.flr.gov.nl.ca/department/contact\\_lands.html](http://www.flr.gov.nl.ca/department/contact_lands.html)

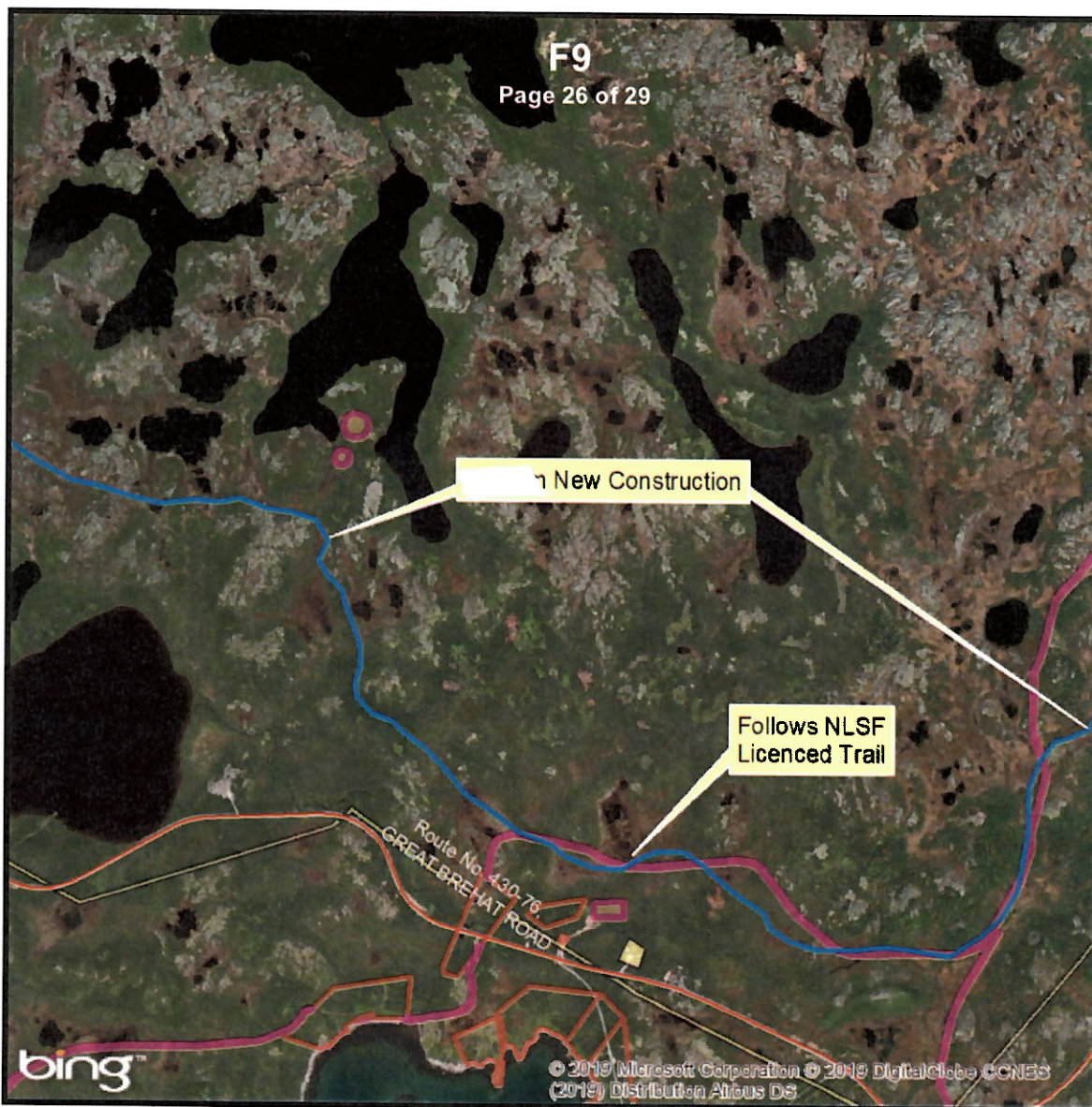
Author: J Bannister  
Date: 12/23/2019



1:20,000



# Government of Newfoundland & Labrador Department of Fisheries & Land Resources Crown Lands Administration Division



## NOTE TO USERS

The information on this map was compiled from land surveys registered in the Crown Lands Registry.

Since the Registry does not contain information on all land ownership within the Province, the information depicted cannot be considered complete.

The boundary lines shown are intended to be used as an index to land titles issued by the Crown. The accuracy of the plot is not sufficient for measurement purposes and does not guarantee title.

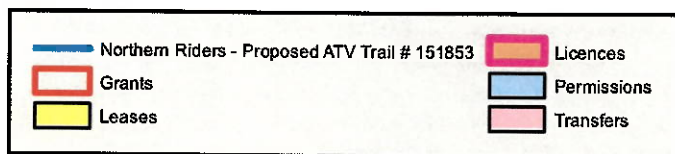
Users finding any errors or omissions on this map sheet are asked to contact the Crown Lands Inquiries Line by telephone at 1-833-891-3249 or by email at [CrownLandsInfo@gov.nl.ca](mailto:CrownLandsInfo@gov.nl.ca).

Some titles may not be plotted due to Crown Lands volumes missing from the Crown Lands registry or not plotted due to insufficient survey information.

The User hereby indemnifies and saves harmless the Minister, his officers, employees and agents from and against all claims, demands, liabilities, actions or cause of actions alleging any loss, injury, damages and matter (including claims or demands for any violation of copyright or intellectual property) arising out of any missing or incomplete Crown Land titles, and the Minister, his or her officers, employees and agents shall not be liable for any loss of profits or contracts or any other loss of any kind as a result.

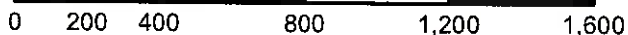
For inquiries please contact the Crown Lands Inquiries Line by telephone at 1-833-891-3249 or by email at [CrownLandsInfo@gov.nl.ca](mailto:CrownLandsInfo@gov.nl.ca). Or visit the nearest Regional Lands Office; [http://www.flr.gov.nl.ca/departement/contact\\_land.html](http://www.flr.gov.nl.ca/departement/contact_land.html)

Author: J Bannister  
Date: 12/23/2019

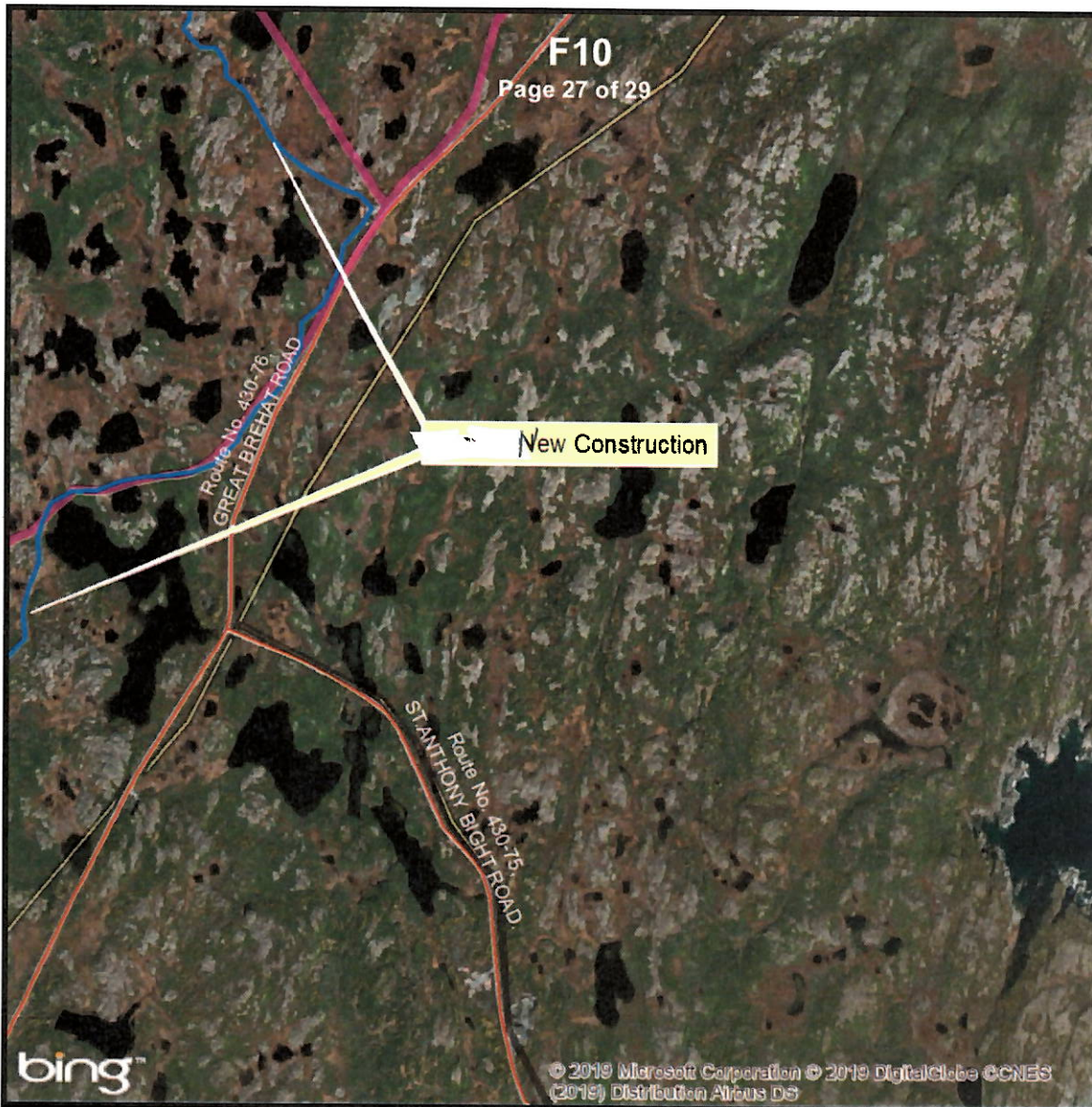


1:20,000

Meters



# Government of Newfoundland & Labrador Department of Fisheries & Land Resources Crown Lands Administration Division



## NOTE TO USERS

The information on this map was compiled from land surveys registered in the Crown Lands Registry.

Since the Registry does not contain information on all land ownership within the Province, the information depicted cannot be considered complete.

The boundary lines shown are intended to be used as an index to land titles issued by the Crown. The accuracy of the plot is not sufficient for measurement purposes and does not guarantee title.

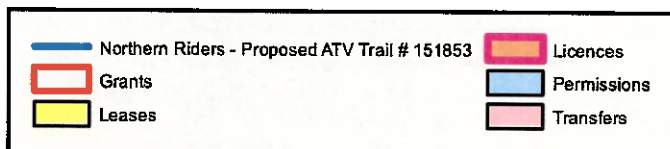
Users finding any errors or omissions on this map sheet are asked to contact the Crown Lands Inquiries Line by telephone at 1-833-891-3249 or by email at [CrownLandsInfo@gov.nl.ca](mailto:CrownLandsInfo@gov.nl.ca).

Some titles may not be plotted due to Crown Lands volumes missing from the Crown Lands registry or not plotted due to insufficient survey information.

The User hereby indemnifies and saves harmless the Minister, his officers, employees and agents from and against all claims, demands, liabilities, actions or cause of actions alleging any loss, injury, damages and matter (including claims or demands for any violation of copyright or intellectual property) arising out of any missing or incomplete Crown Land titles, and the Minister, his or her officers, employees and agents shall not be liable for any loss of profits or contracts or any other loss of any kind as a result.

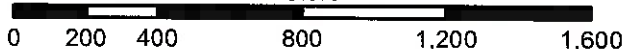
For inquiries please contact the Crown Lands Inquiries Line by telephone at 1-833-891-3249 or by email at [CrownLandsInfo@gov.nl.ca](mailto:CrownLandsInfo@gov.nl.ca). Or visit the nearest Regional Lands Office; [http://www.flr.gov.nl.ca/departement/contact\\_land.html](http://www.flr.gov.nl.ca/departement/contact_land.html)

Author: J Bannister  
Date: 12/23/2019



1:20,000

Meters



# Government of Newfoundland & Labrador Department of Fisheries & Land Resources Crown Lands Administration Division



## NOTE TO USERS

The information on this map was compiled from land surveys registered in the Crown Lands Registry.

Since the Registry does not contain information on all land ownership within the Province, the information depicted cannot be considered complete.

The boundary lines shown are intended to be used as an index to land titles issued by the Crown. The accuracy of the plot is not sufficient for measurement purposes and does not guarantee title.

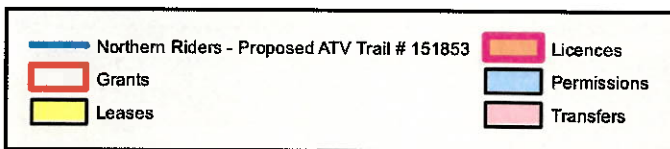
Users finding any errors or omissions on this map sheet are asked to contact the Crown Lands Inquiries Line by telephone at 1-833-891-3249 or by email at [CrownLandsInfo@gov.nl.ca](mailto:CrownLandsInfo@gov.nl.ca).

Some titles may not be plotted due to Crown Lands volumes missing from the Crown Lands registry or not plotted due to insufficient survey information.

The User hereby indemnifies and saves harmless the Minister, his officers, employees and agents from and against all claims, demands, liabilities, actions or cause of actions alleging any loss, injury, damages and matter (including claims or demands for any violation of copyright or intellectual property) arising out of any missing or incomplete Crown Land titles, and the Minister, his or her officers, employees and agents shall not be liable for any loss of profits or contracts or any other loss of any kind as a result.

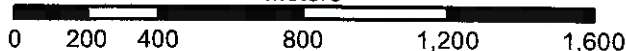
For inquiries please contact the **Crown Lands Inquiries Line** by telephone at 1-833-891-3249 or by email at [CrownLandsInfo@gov.nl.ca](mailto:CrownLandsInfo@gov.nl.ca). Or visit the nearest Regional Lands Office; [http://www.flr.gov.nl.ca/departement/contact\\_lands.html](http://www.flr.gov.nl.ca/departement/contact_lands.html)

Author: J Bannister  
Date: 12/23/2019



1:20,000

Meters





# Government of Newfoundland & Labrador Department of Fisheries & Land Resources Crown Lands Administration Division



## NOTE TO USERS

The information on this map was compiled from land surveys registered in the Crown Lands Registry.

Since the Registry does not contain information on all land ownership within the Province, the information depicted cannot be considered complete.

The boundary lines shown are intended to be used as an index to land titles issued by the Crown. The accuracy of the plot is not sufficient for measurement purposes and does not guarantee title.

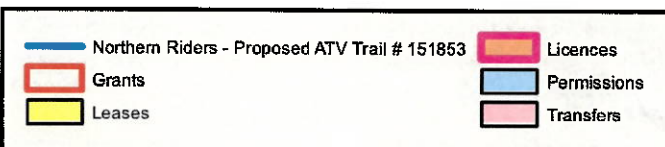
Users finding any errors or omissions on this map sheet are asked to contact the Crown Lands Inquiries Line by telephone at 1-833-891-3249 or by email at [CrownLandsInfo@gov.nl.ca](mailto:CrownLandsInfo@gov.nl.ca).

Some titles may not be plotted due to Crown Lands volumes missing from the Crown Lands registry or not plotted due to insufficient survey information.

The User hereby indemnifies and saves harmless the Minister, his officers, employees and agents from and against all claims, demands, liabilities, actions or cause of actions alleging any loss, injury, damages and matter (including claims or demands for any violation of copyright or intellectual property) arising out of any missing or incomplete Crown Land titles, and the Minister, his or her officers, employees and agents shall not be liable for any loss of profits or contracts or any other loss of any kind as a result.

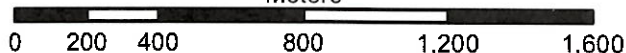
For inquiries please contact the Crown Lands Inquiries Line by telephone at 1-833-891-3249 or by email at [CrownLandsInfo@gov.nl.ca](mailto:CrownLandsInfo@gov.nl.ca). Or visit the nearest Regional Lands Office; [http://www.flr.gov.nl.ca/departement/contact\\_land.html](http://www.flr.gov.nl.ca/departement/contact_land.html)

Author: J Bannister  
Date: 12/23/2019



1:20,000

Meters





*Newfoundland and Labrador Snowmobile Federation*  
7 Wellon Drive, Deer Lake, NL, A8A 2G6  
Tel: (709) 635-4395 Fax: (709) 635-4396  
Website: [www.nlsf.org](http://www.nlsf.org) E-mail: [info@nlsf.org](mailto:info@nlsf.org)

---

October 4, 2017

Northern Drifters Snowmobile Club  
c/o Desmond McDonald  
Manager, Grenfell Heritage Hotel & Suites  
P.O. Box 770, 1 McChada Drive  
St. Anthony, NL  
A0K 4S0

Dear Desmond,

Thanks for your correspondence regarding potential issues surrounding Northern Drifters' use of sections of the existing snowmobile trails in your area.

This letter will confirm that, for the time being and notwithstanding any changes to existing legislation surrounding use of Crown Lands, NLSF supports your group being on our trails for the purpose of maintenance, upkeep and signage for the use of ATVs outside of snowmobile season.

Please contact me if you need any further information or clarification.

Yours truly,

Ben Fitzgerald  
General Manager



AMERICAN INCOME LIFE  
insurance company



THE TOWN OF  
**ST. ANTHONY**

P.O. Box 430, St. Anthony, NL A0K 4S0

---

December 10, 2015

Mr. Desmond McDonald  
Northern Riders ATV Association  
P.O. Box 493  
St. Anthony, NL  
AOK 4S0

Dear Mr. McDonald,

During a Public Council meeting held on December 9, 2015, Council reviewed your letter seeking permission to develop trails within the Town Limits. Further to this point, the Town would welcome an opportunity to meet with you and/or your executive to discuss your plans and how we can work with you to further this initiative.

Any such development that creates growth for our business community and helps build a positive safe environment for ATV users is a win for our community and region. We look forward to further discussions.

To arrange a convenient time, please contact the Town office.

Regards,

A handwritten signature in blue ink, appearing to read 'Curtis Richards'.

Curtis Richards  
Town Manager